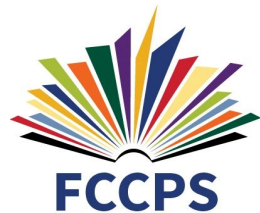


# School Safety & Design: Engaging the Community?

FORMATS AND STRUCTURE  
FOR COLLABORATING WITH  
THE COMMUNITY

MARCH 2, 2019



BRAILSFORD & DUNLAVEY

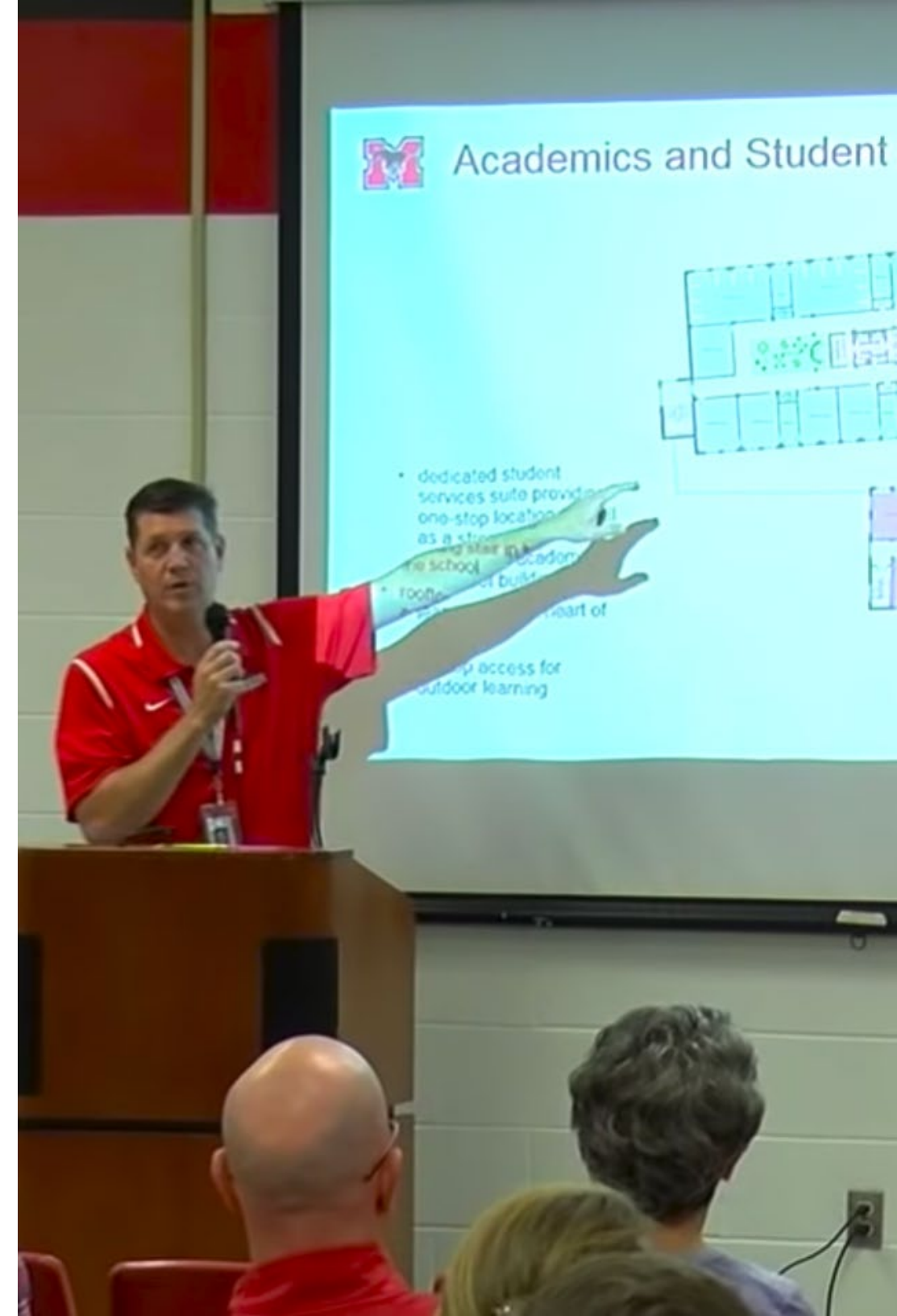


Stantec



# Learning Objectives

- › Participants will understand new formats and structure for collaborating with the community
- › Participants will learn methods for receiving and responding to feedback received during the design process
- › Participants will learn about design strategies for multi-story high schools
- › Participants will learn case study examples of high school safety and security design



# Presenters



**Dr. Peter Noonan**

Superintendent  
Falls Church City  
Public Schools



**Jeff Bonvechio**

Regional Vice  
President  
Brailsford &  
Dunlavey



**Dr. Bill Bradley**

Principal  
Stantec



**Deisy Brangman**

Senior Project  
Manager  
Brailsford &  
Dunlavey



# Project Team



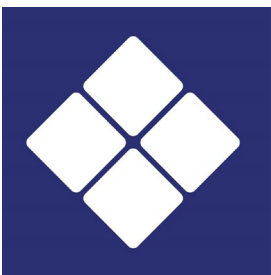
**Falls Church City  
Public Schools**  
Owner



**City of Falls  
Church, VA**  
Owner



**Brailsford &  
Dunlavy**  
Program Manager



**Hanscomb  
Consulting**  
Project Manager



**Gilbane**  
Builder



**Stantec**  
Architect



**Quinn-Evans**  
Architect







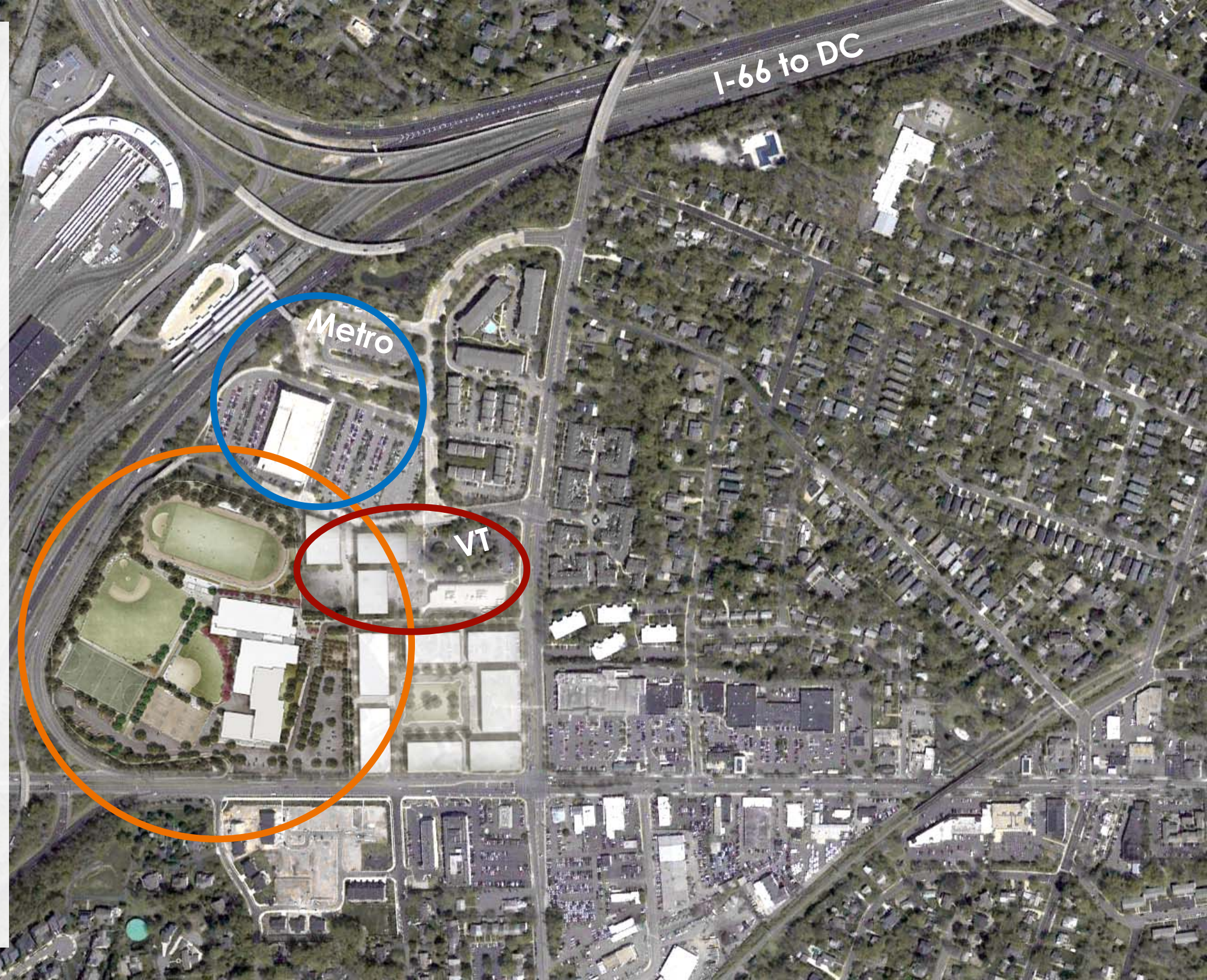
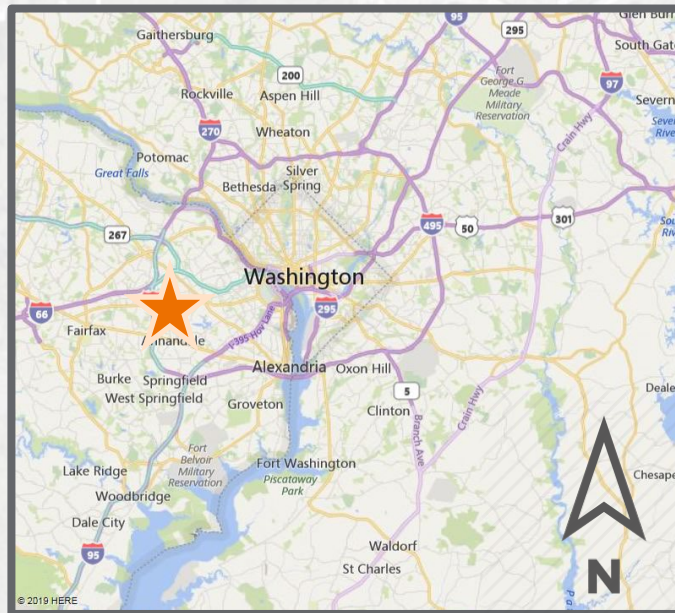


## George Mason HS

10-year conversation

1,500 students

285,000 GSF







## Unique security issues

*per capita* diplomats  
and state department

*The Americans*

proximity to DC





02

# Community Engagement Strategy



# What is Community Engagement?

“The **process of working collaboratively** with community groups **to address issues** that impact the well-being of those groups.”

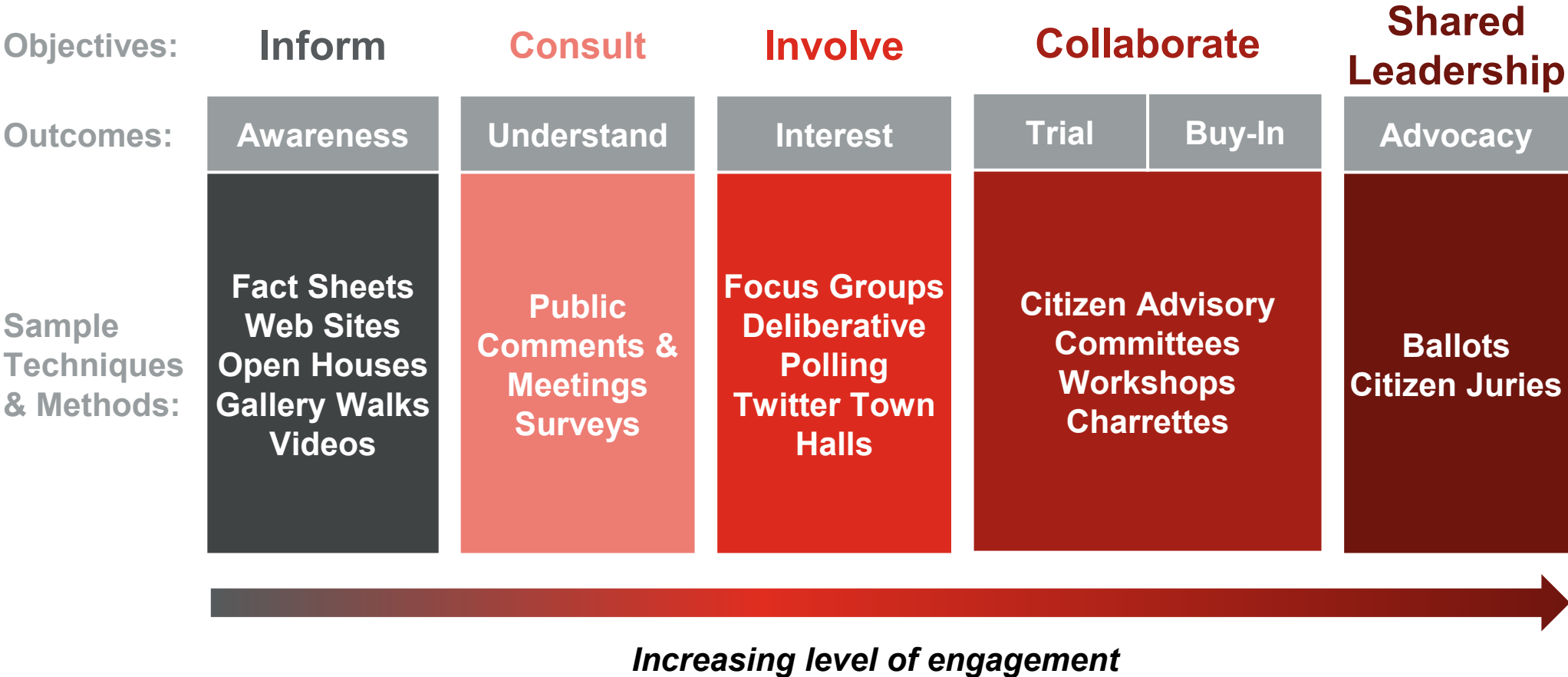
*- Financial Times Lexicon*

“To **involve those who are affected** by a decision in the decision-making process.”

*- International Association of  
Public Participation*

# Engagement Spectrum

*Adapted from IAP2 Public Participation Spectrum*







## Transition challenges

suburban to urban

sprawling to compact

single-story to multi-story

traditional instruction to  
more open, flexible,  
student-driven learning

hardened bias to more  
balanced approach

operational culture shift







## Engagement vehicles

sub-topic  
subcommittees

Sunday Series

League of Women  
Voters security panel

website

key stakeholder  
meetings

student focus groups







# FALLS CHURCH CITY

Public Schools

800 West Broad Street, Suite 203, Falls Church, Virginia 22046

(703) 248-5600

(703) 248-5613

[Home](#) [Registration](#) [About FCCPS](#) [Calendars](#) [Departments](#) [School Board](#) [Contact Us](#) [Employment](#)



**George Mason  
Campus Project**

[FOR STUDENTS](#)



[FOR PARENTS](#)



[FOR STAFF](#)



[www.fccps.org/campusproject](http://www.fccps.org/campusproject)



## The New George Mason High School

[Questions & Answers](#)

[Latest Events](#)

[Document Repository](#)

[Campus Coordinating Committee](#)

[GMHS Campus Project Overview](#)

[History of GMHS Campus Project](#)

## son High School

ge Mason High School



Process:







### GMHS

building administration  
students  
counseling  
testing  
HY-C  
performing arts  
visual arts  
athletics  
physical education  
library / media services  
core & specialty  
academics  
career & technical ed  
robotics

### Community

sub-committees  
ed foundation  
legacy reps

### FCCPS

central office admin  
facilities operations  
facilities maintenance  
transportation  
food services  
instructional tech  
auditorium tech  
school security

### MEHMS

middle school admin  
middle school music

### Falls Church City

planning commission  
code officials  
fire marshal  
police

# 03

## The Design







## **George Mason HS**

1,500 students

285,000 GSF

7 stories

occupied site

\$120 million project

PPEA design-build

opens 2021





## **Design objectives**

fit on a crowded site

co-locate with MEHMS

share resources

open to community

facilitate learning

welcome and inviting

safe and secure





## Security challenges

community access  
during school, after  
hours, and weekends

adjoining middle school

mitigating multiple  
stories

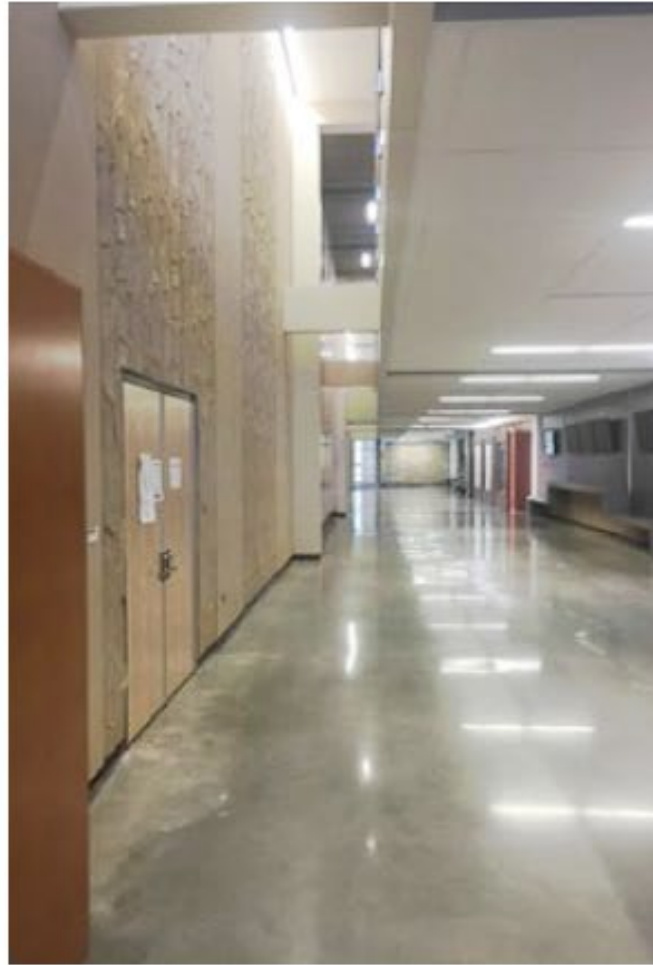
balancing desire to  
deliver instruction, foster  
community, and provide  
a secure environment

emotional safety &  
security





**21<sup>st</sup> Century learning?**

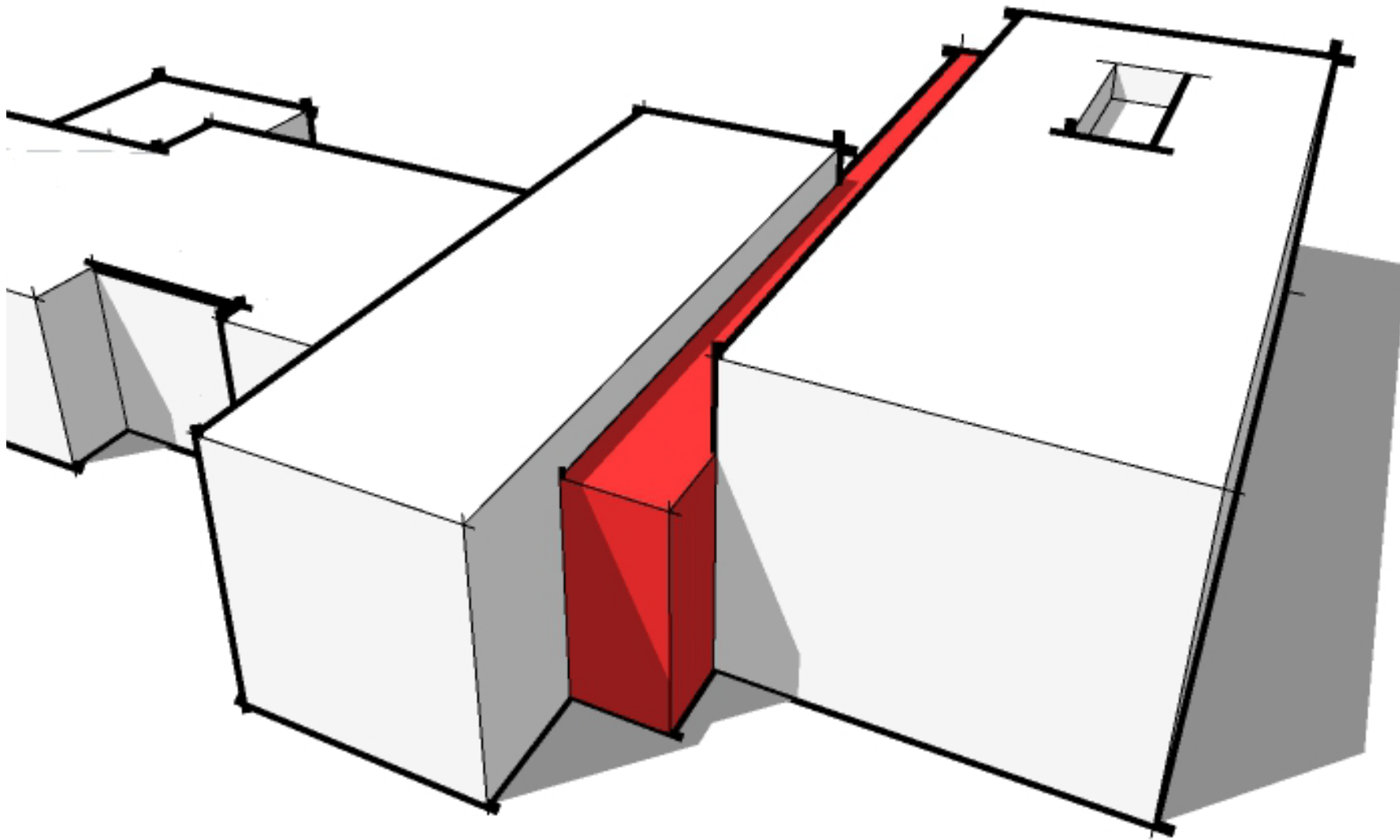


**21<sup>st</sup> Century learning?**









## **George Mason HS**

1,500 students

285,000 GSF

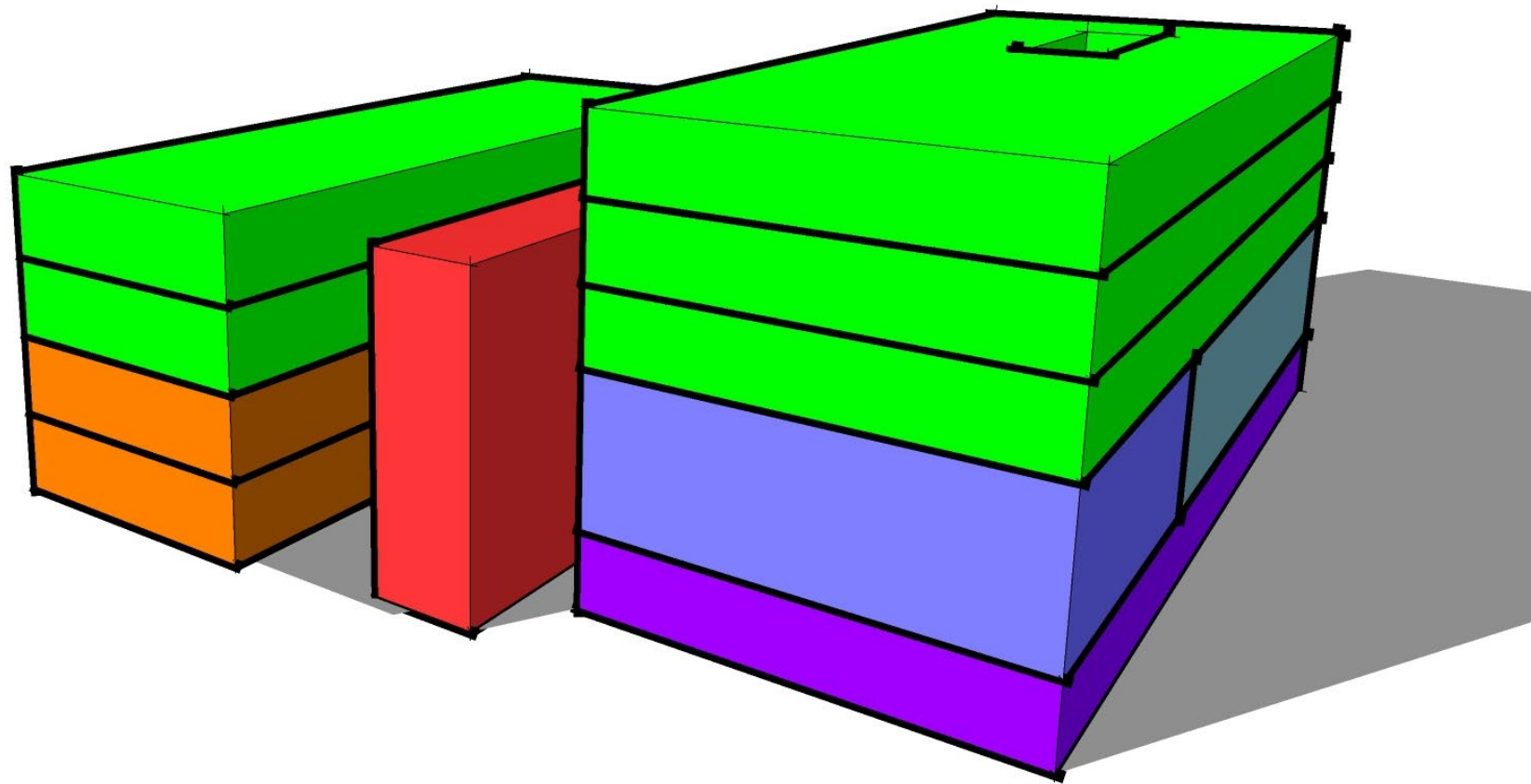
7 stories

occupied site

\$120 million project

PPEA design-build

opens 2021



## George Mason HS

1,500 students

285,000 GSF

7 stories

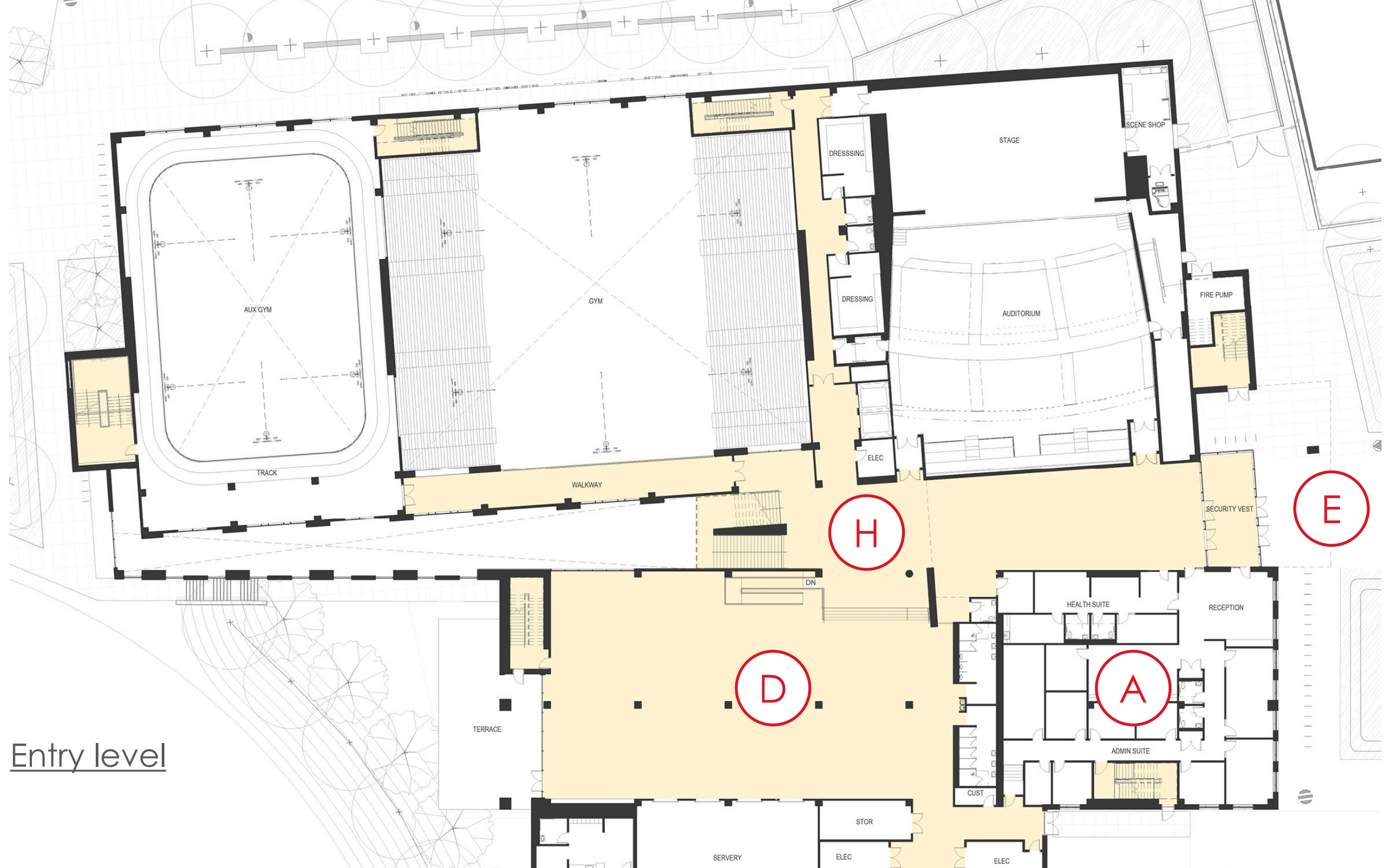
occupied site

\$120 million project

PPEA design-build

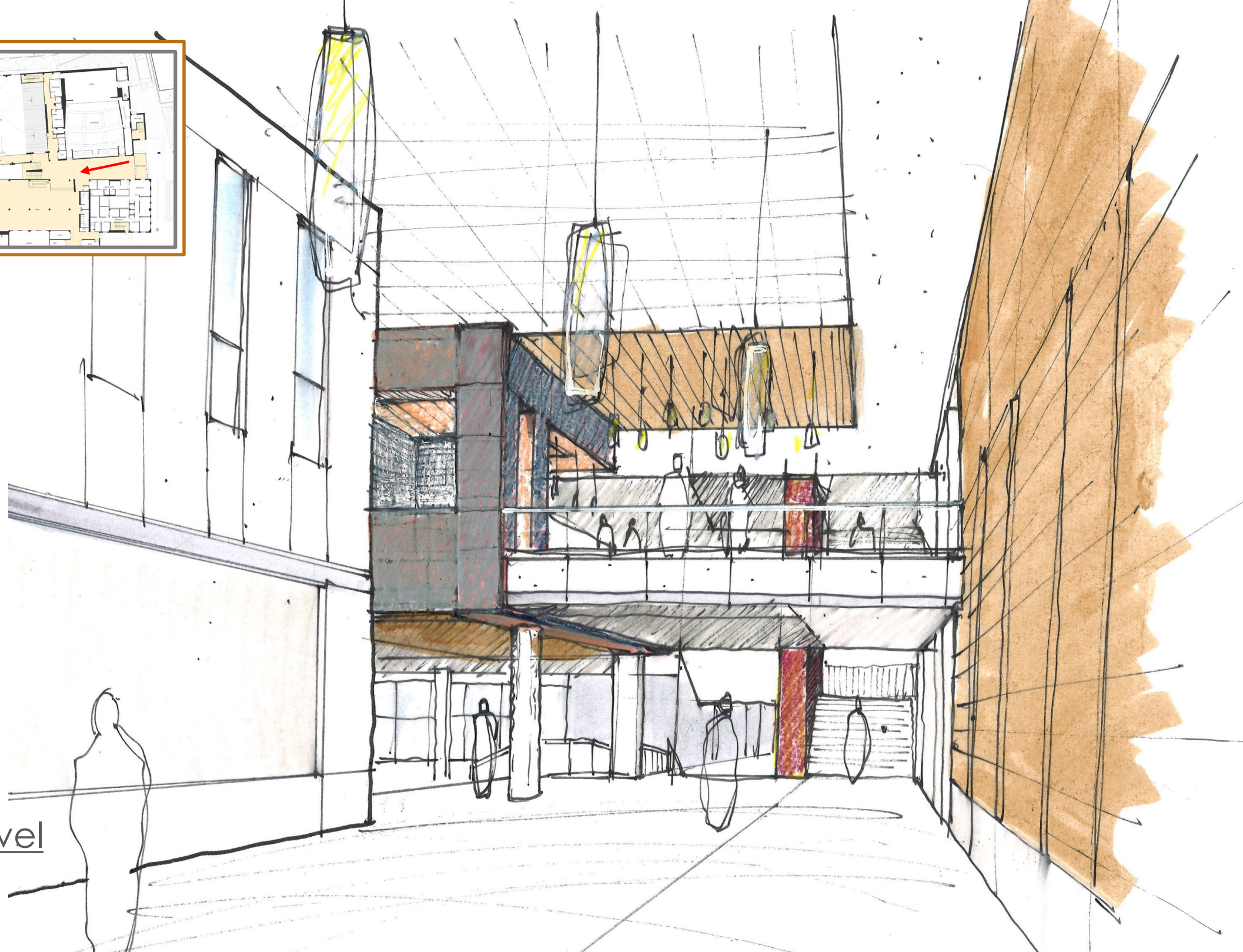
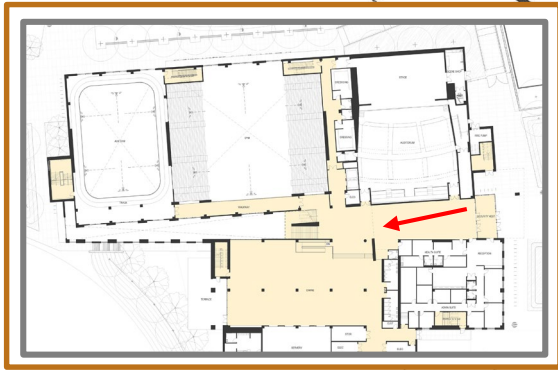
opens 2021





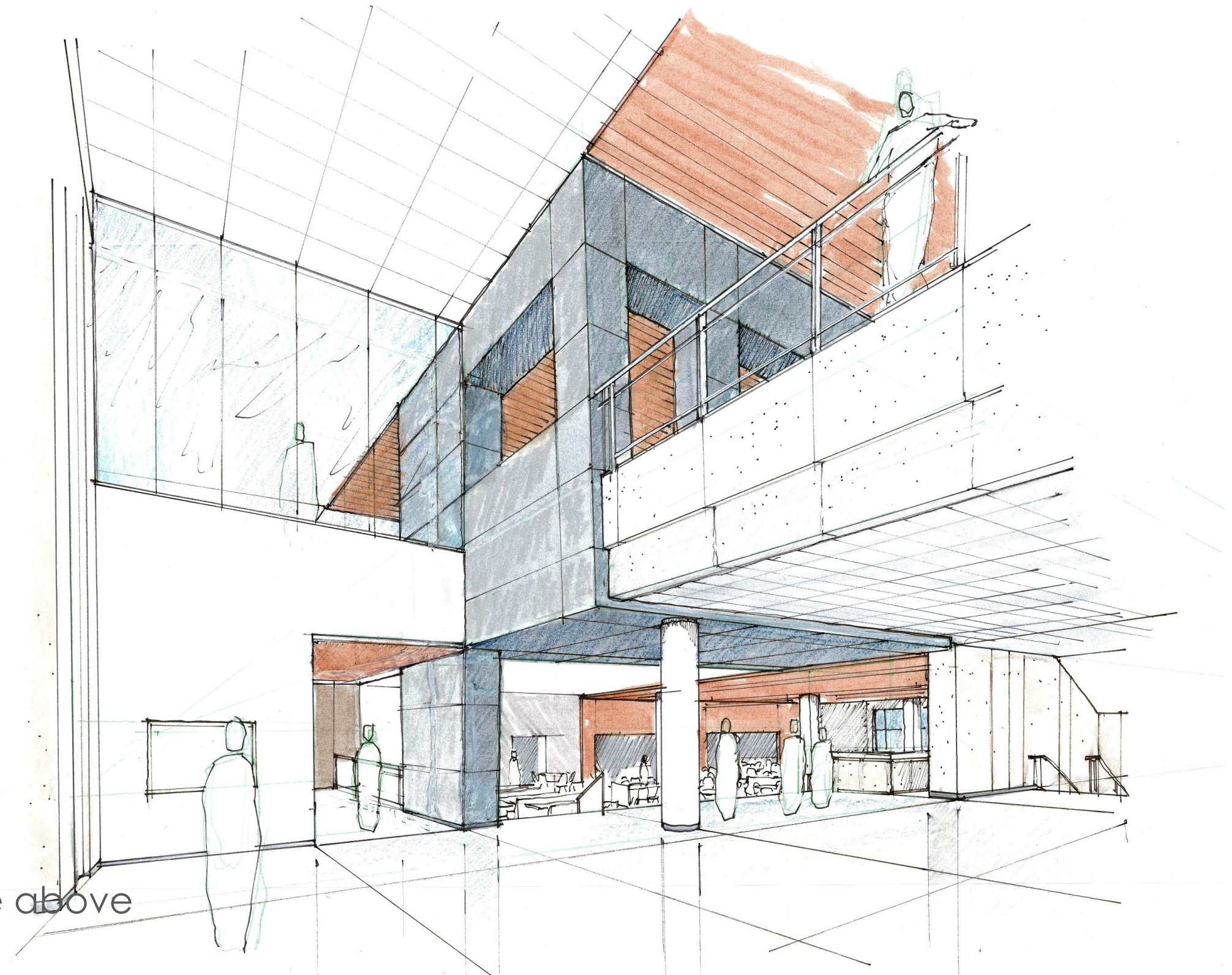
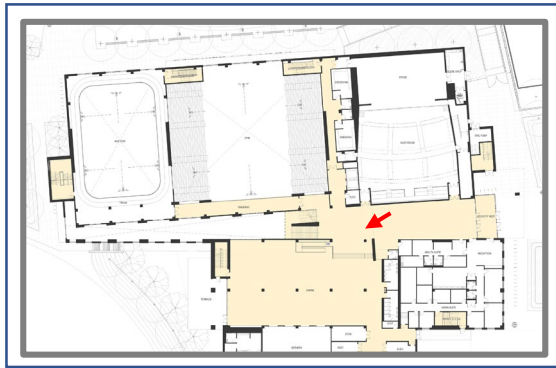
Entry level





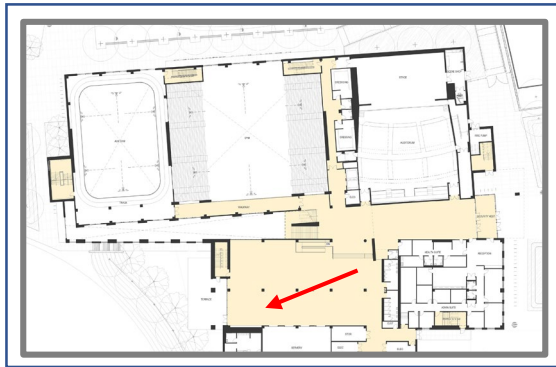
Entry level





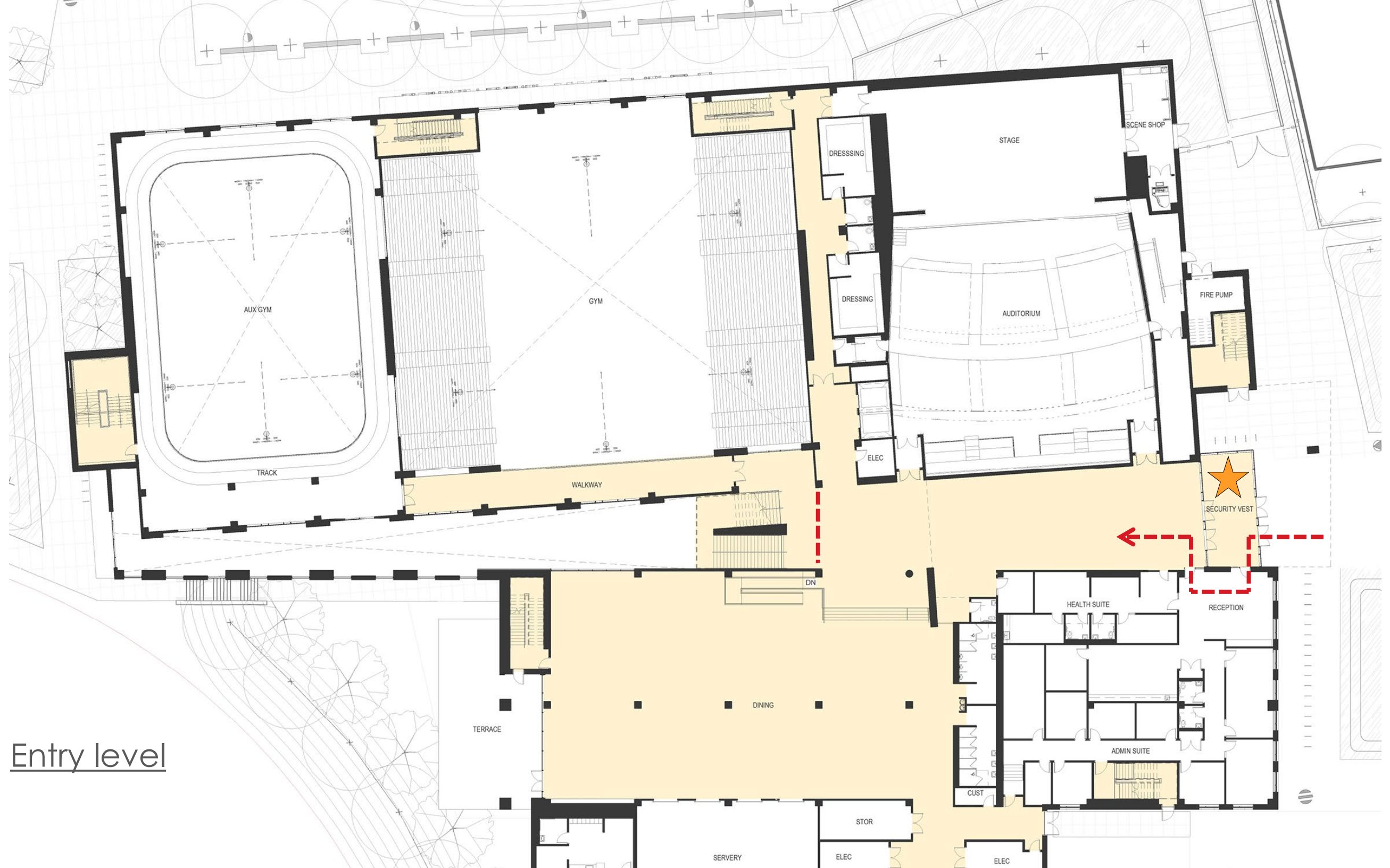
Entry level  
view of dining with café above





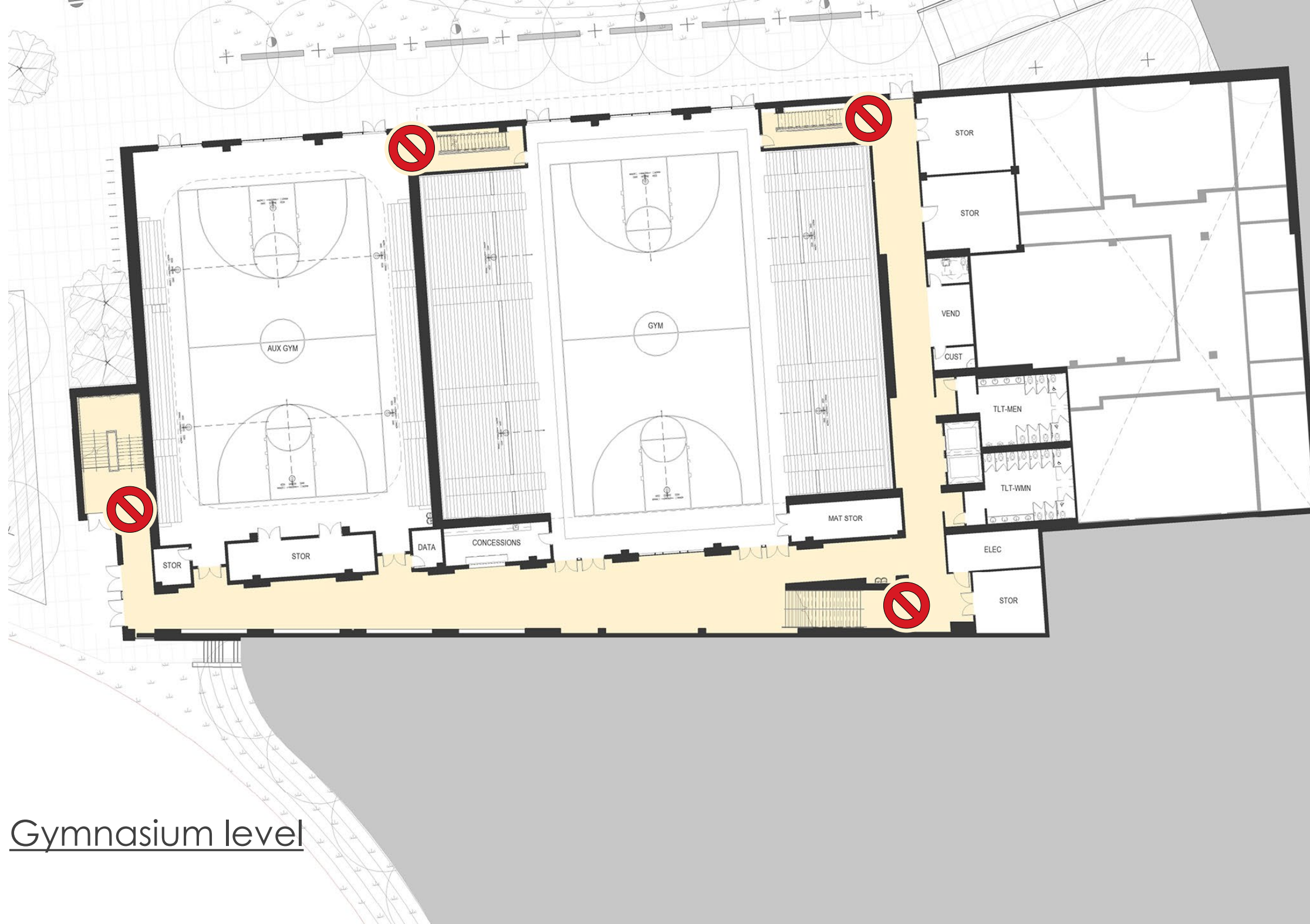
Entry level





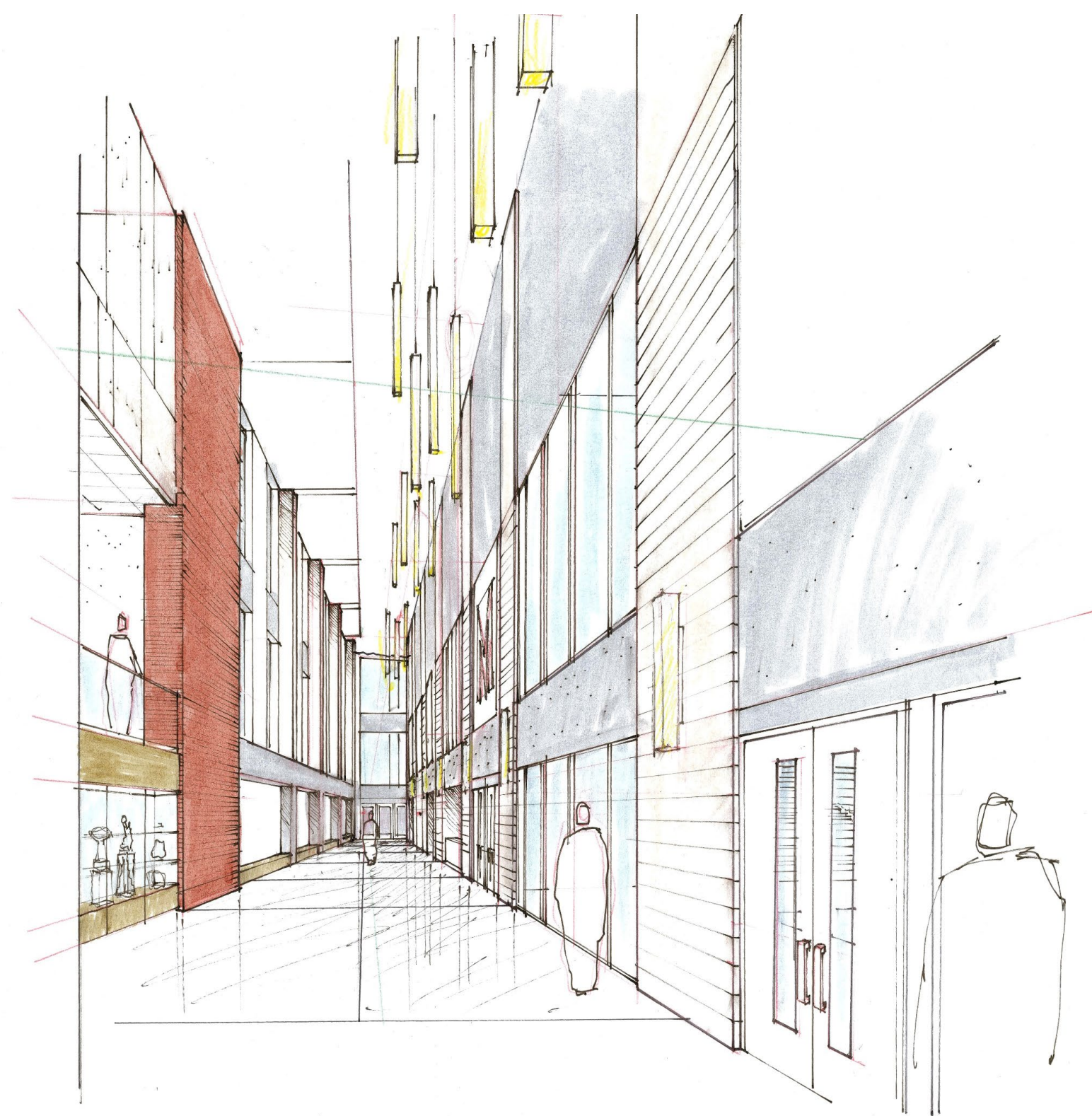
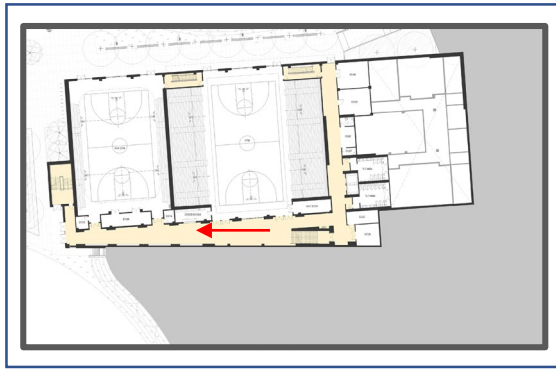
Entry level





Gymnasium level





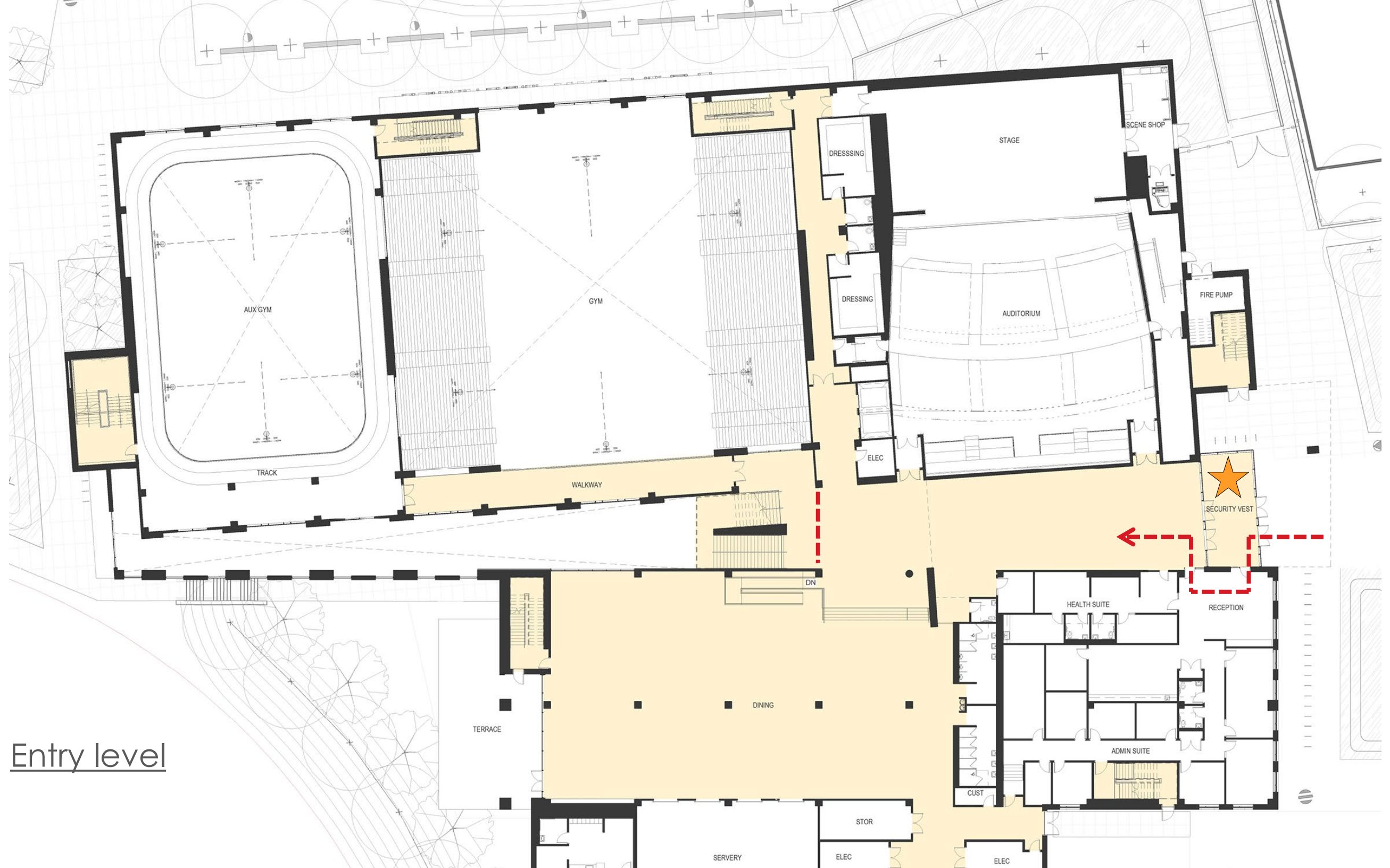
Gymnasium level





Ground level





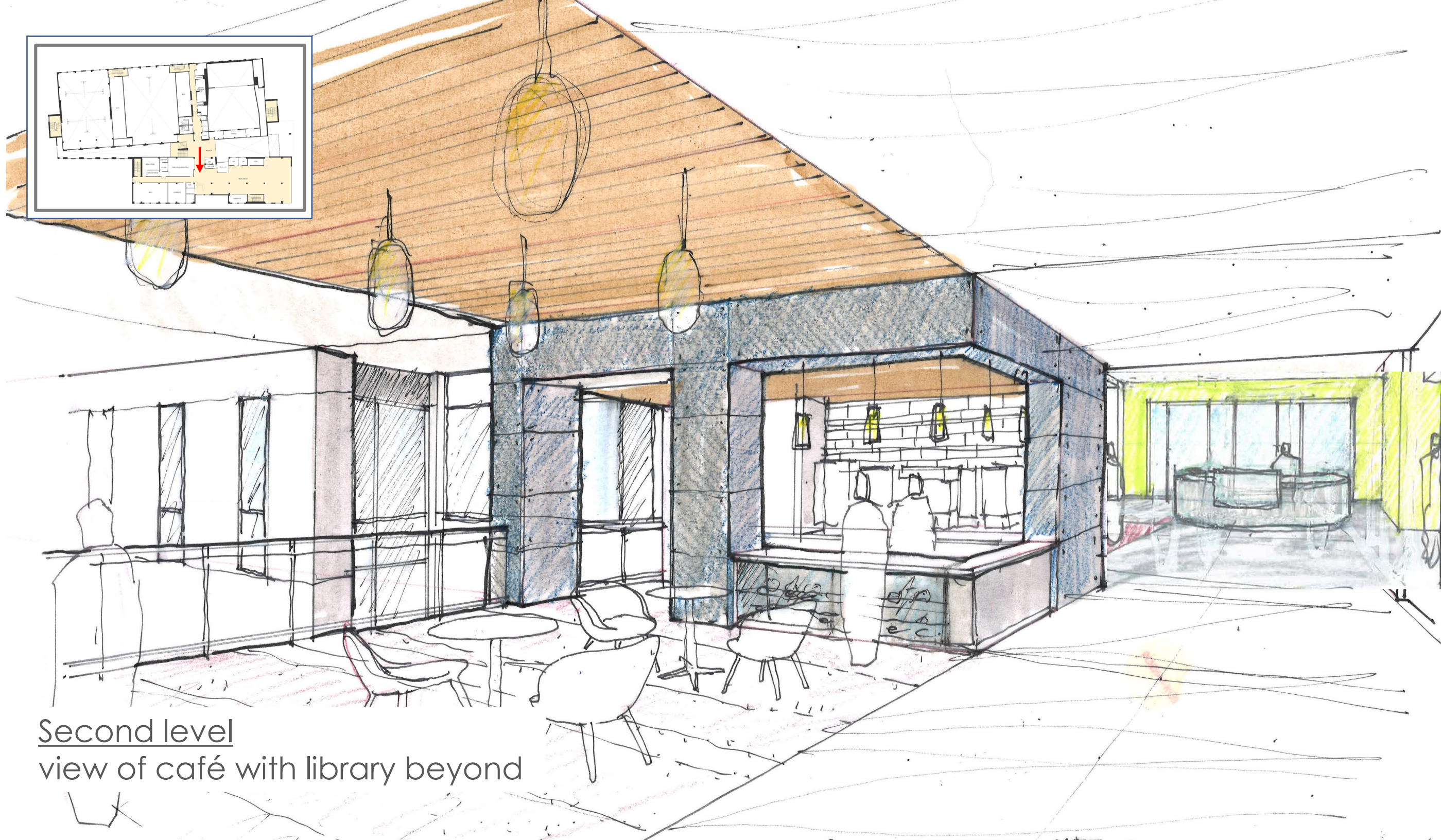
Entry level



Second level

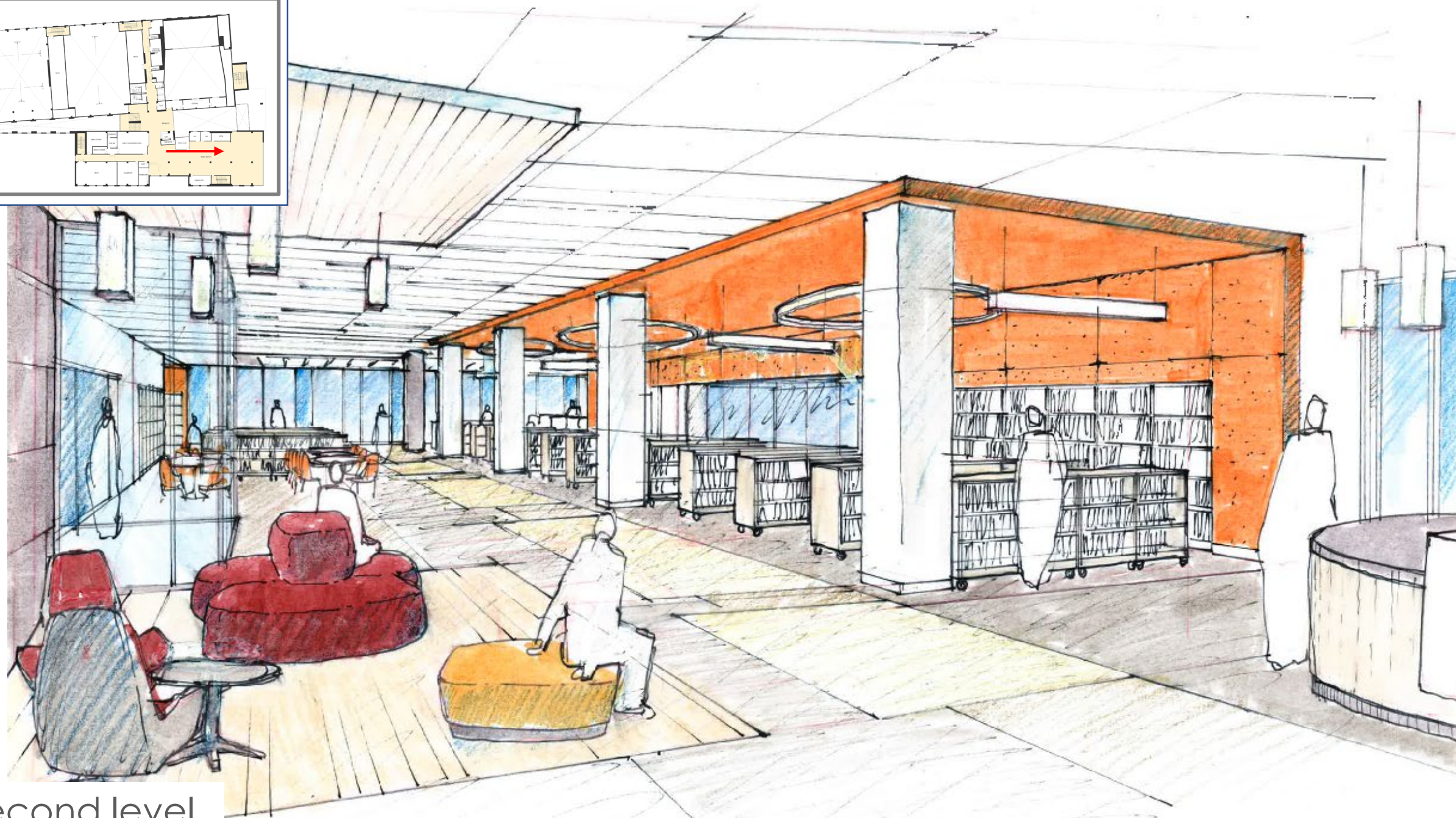
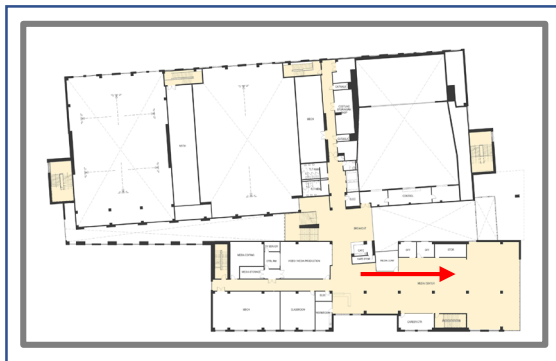






Second level  
view of café with library beyond

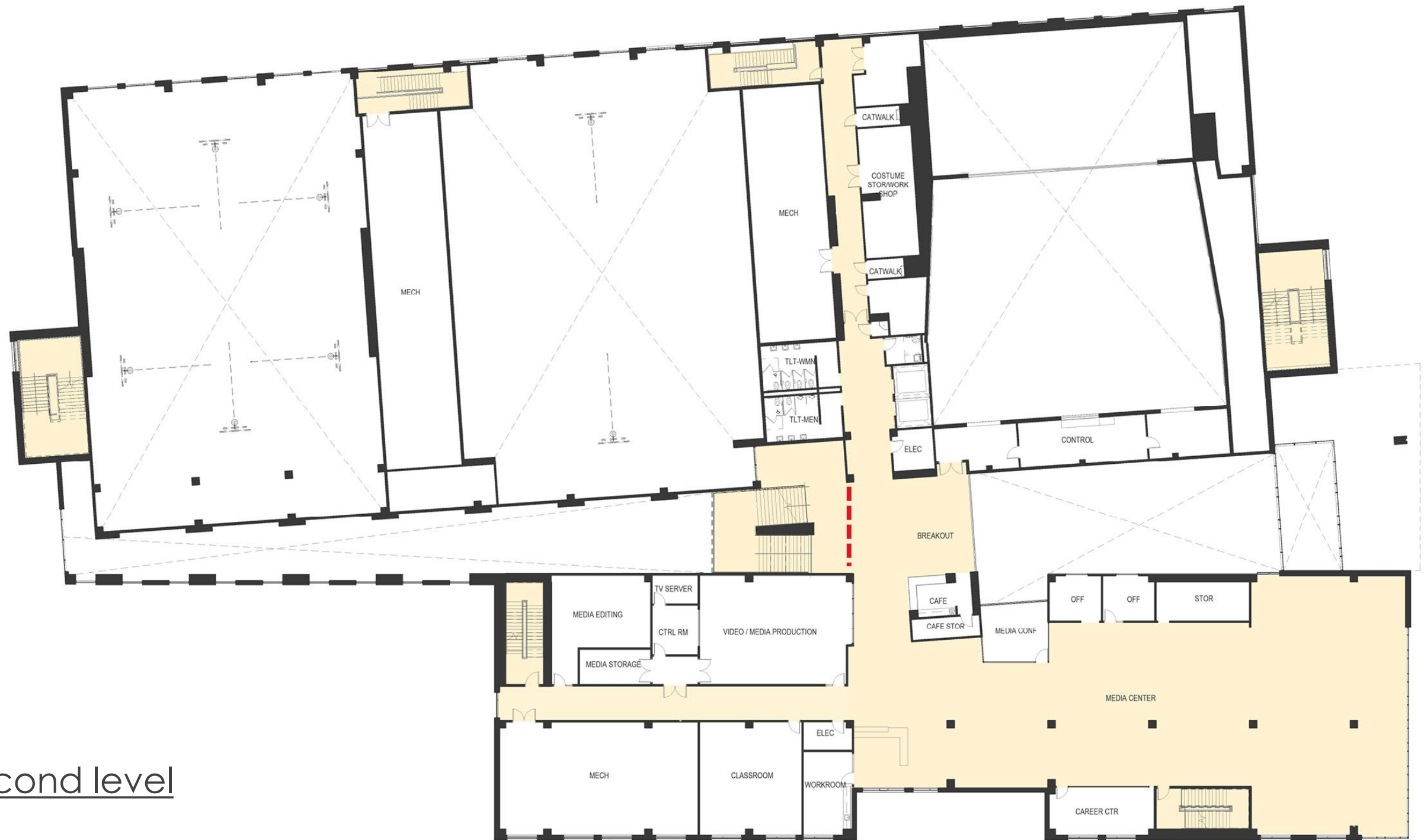




Second level



## Second level

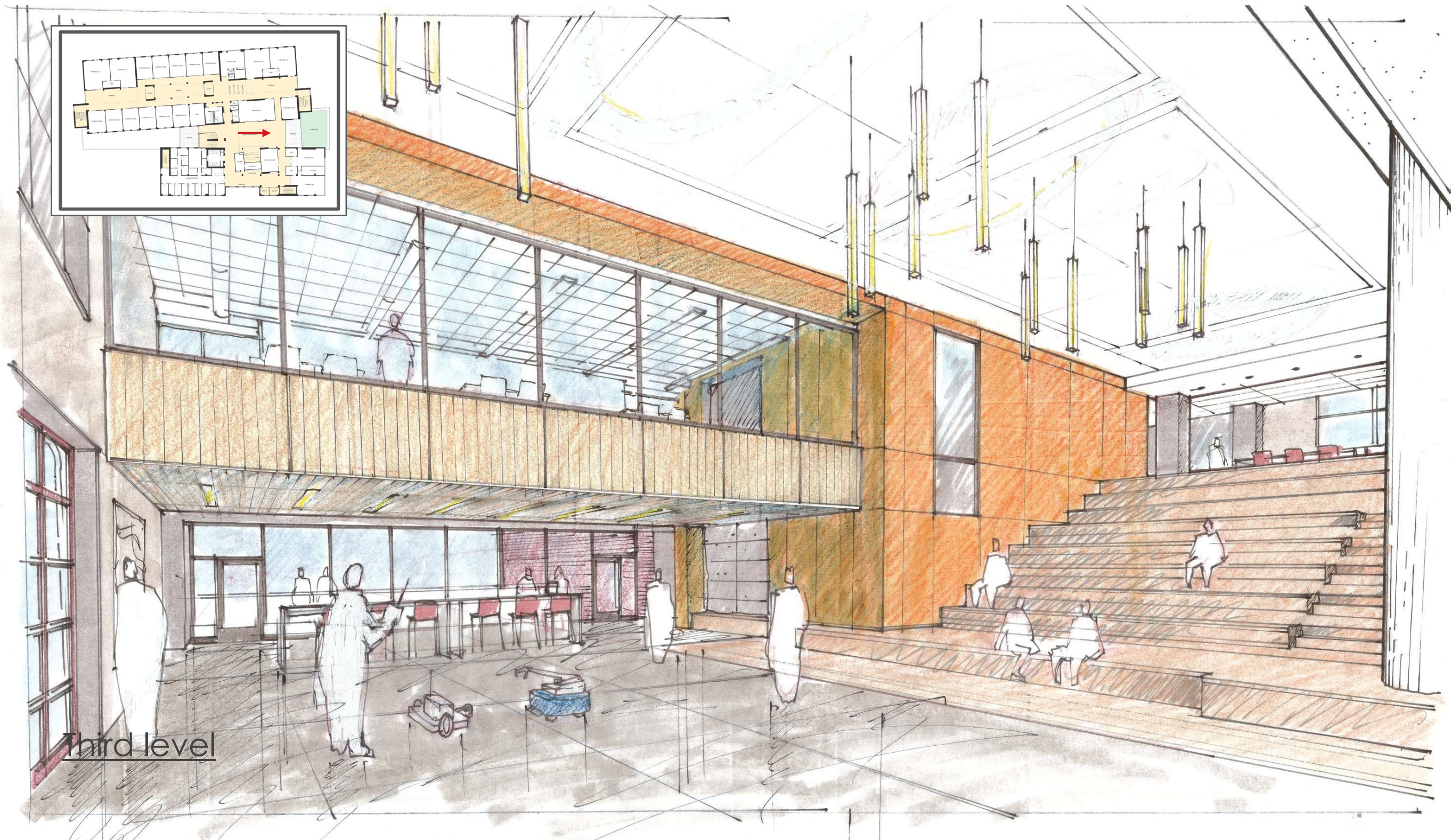




Third level





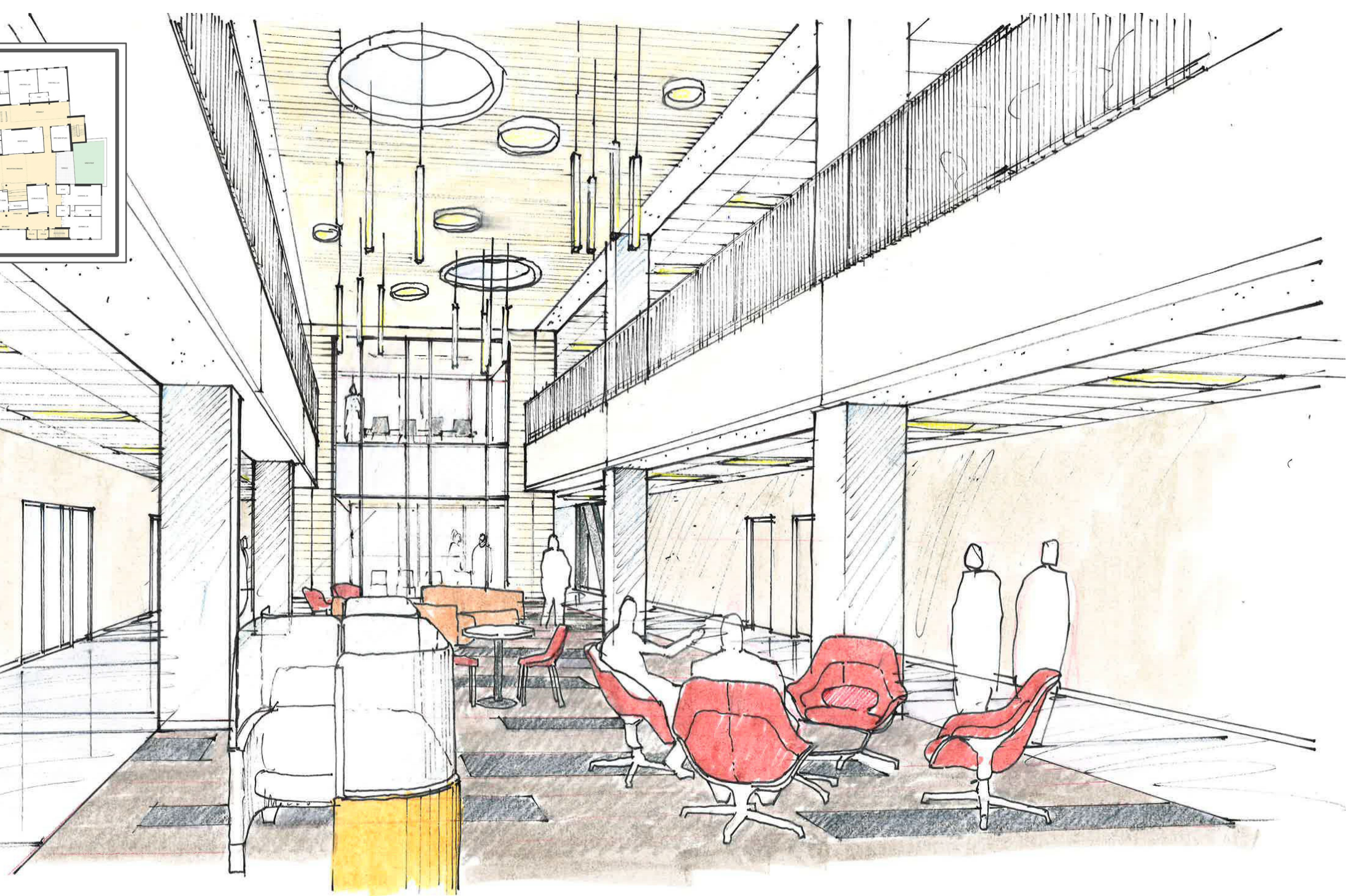


Third level





Third level







Third level



## Fourth level





## Fourth level







Fifth level



04

# Lessons Learned





# How does this process scale up?



## Lessons Learned

- › Balance with:
  - Educational Program
  - Life Safety
  - Building Operations
- › Safety and Security subcommittee
  - 1st Community Meeting good to have as standalone committee
  - Identified safety and security concerns in all subcommittees
- › Benefits of Vertical Structure
  - Limited entrances
  - Current: 90+ → New: <15
- › District Safety & Security Review
  - Protocols modifications
  - Updated training



05

# Wrap Up and Questions





# Thank you.

VISIT [WWW.FCCPS.ORG/CAMPUSPROJECT](http://WWW.FCCPS.ORG/CAMPUSPROJECT) FOR MORE INFORMATION.