

Building Bridges

Creating Innovative Learning Environments Supporting Students with Special Needs at Bridges Adult Transition Center

FEBRUARY 28, 2024



Introduction



Athi Toufexis, ALEP, AIA
Principal
Educational Planner



Cory Boaz, ALEP
Principal
Educational Planner

LEARNING OBJECTIVE 1:

- Understand the importance of young adult transitional services for students with special needs.

LEARNING OBJECTIVE 2:

- Discover how community partnerships can expand learning opportunities beyond a traditional school environment.

LEARNING OBJECTIVE 3:

- Explore how specialized learning environments and pedagogies can cultivate student growth and success.

LEARNING OBJECTIVE 4:

- Learn tools to gain stakeholder support and consensus in supporting special educational spaces and projects.



Over 3 million children 18 years old and younger, in the United States have a disability

15% (Over 7.2 million) of all public school students ages 3-21 receive special education services in the US and trends have been slightly increasing

61 million adults (18 and over) in the US have a disability, but...

- **Only 19.1%** of them are employed
- **Only 17%** of them live independently
- In Illinois, 28% of adults have a disability



Employees with disabilities have a **48% lower turnover rate** than non-disabled employees

92% of Americans view companies that hire employees with disabilities more favorably than those who don't



Where will I live?

Where will I work?

How will I get to work?

How do I host family and friends at my home?

Where will I get therapy if needed?

What will I do in my free time?

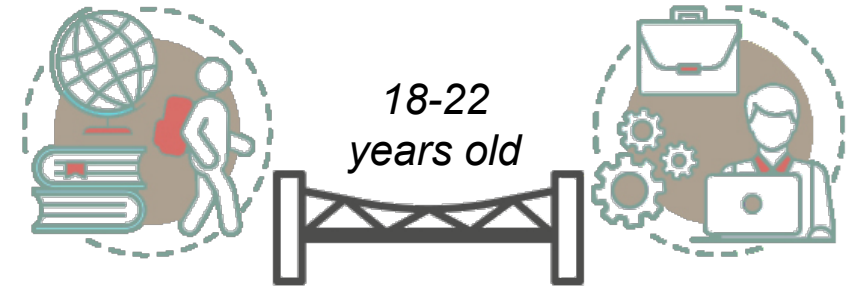
How will I pay my bills?

Who will I live with?

How will I cook for myself?



AREAS OF TRANSITION LEARNING

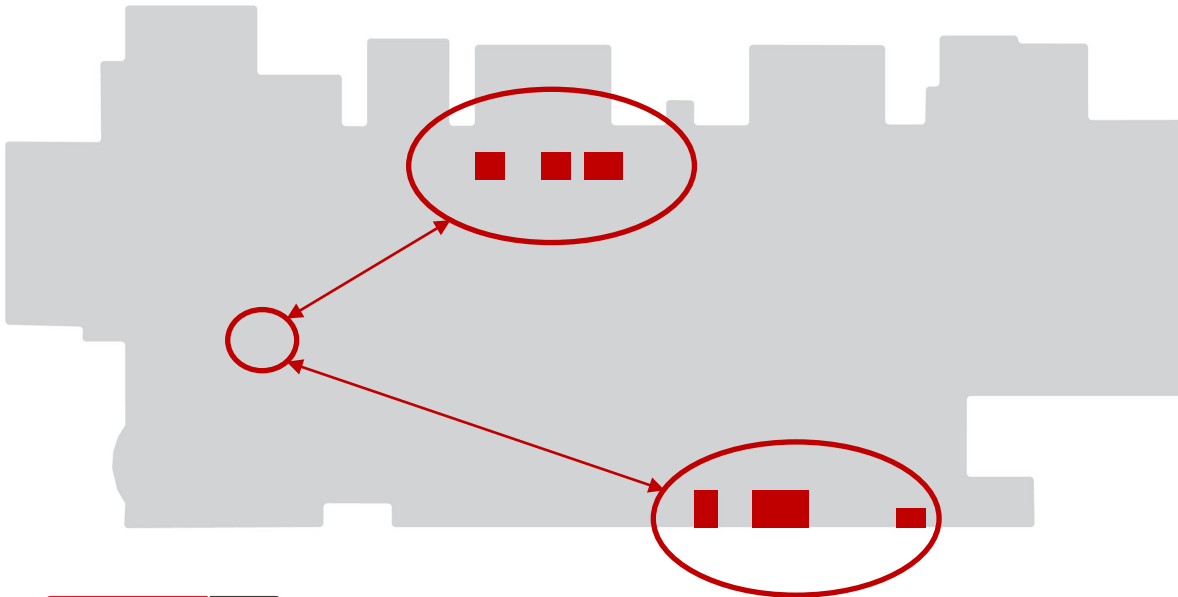


Independent Living	Vocational	Training	Post-Secondary Education
Cooking Skills, Kitchen Safety, and Nutrition	Vocational Awareness/ Skills	Transportation and Community Access	Money management: Budgeting, making purchases, banking
Personal Appearance and Hygiene	Self Advocacy Skills	Post Secondary Education and/or Training Planning	Functional Reading: Schedules, Recipes, Maps etc.
Personal Health and Well-being, Home Management Tasks	Interpersonal Skills	Knowledge of Community Resources and Rec Leisure	Functional Writing: Filling out forms- applications, resumes, personal information, W-2.

Laying the groundwork

HIGH SCHOOL SETTING

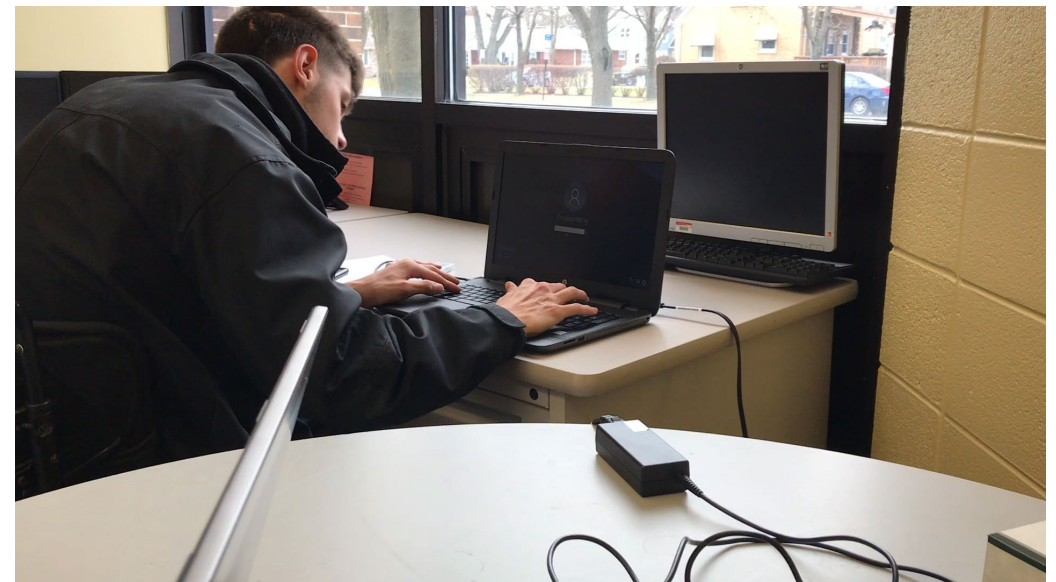
- Graduated Seniors
- Bell Schedule
- Crowds
- Cafeteria/Lunch
- Allocated space – 3,639 SF



SITE VISITS



PROGRAMMING TO SUPPORT STUDENT EXPERIENCES



ASPIRATIONAL PROGRAM DEVELOPMENT

FUNCTION	DESCRIPTION	17,000 SQ FT	35,000 SQ FT
conference room		300	300
conference room		not included	300
office	program director	150	150
office	occupational therapist	150	150
office	physical therapist	150	150
office	speech therapist	150	150
office	social worker	150	150
office	nurse	150	150
breakroom		200	200
workspace	job coach	not included	500
workspace	teachers and teacher aides	500	500
classroom		not included	600
classroom		not included	600
classroom		500	600
classroom		500	600
classroom		500	600
women toilet/locker room		400	400
men toilet/locker room		400	400
sensory room		1500	1500
bedroom		1000	1200
commercial kitchen		1200	2000
industrial laundry		not included	2000
retail store		1200	1200
printing lab		not included	2000
conveyor belt		not included	2000
grocery store		1200	2000
net square feet		12900	26800
total 1.2 grossing factor		15480	32160
total 1.3 grossing factor		16770	34840
total 1.4 grossing factor		18060	37520

bedroom	1000	1200
commercial kitchen	1200	2000
industrial laundry	not included	2000
retail store	1200	1200
printing lab	not included	2000
conveyor belt	not included	2000
grocery store	1200	2000

CONCEPTUAL PROGRAM TEST-FITS

- Offices/ Support
- Conference Room
- Storage
- Workspace
- Classroom 600
- Classroom 500
- Sensory Room
- Recreation Space
- Entry
- Skill Building Spaces
- Consignment Shop/ Greenhouse
- Toilet/Locker Room



STUDENT SQUARE FOOTAGE

198
SF/student

**HIGH SCHOOL MIDWEST
REGION MEDIAN, 2014**

238
SF/student

COLLEGE MEDIAN, 2009

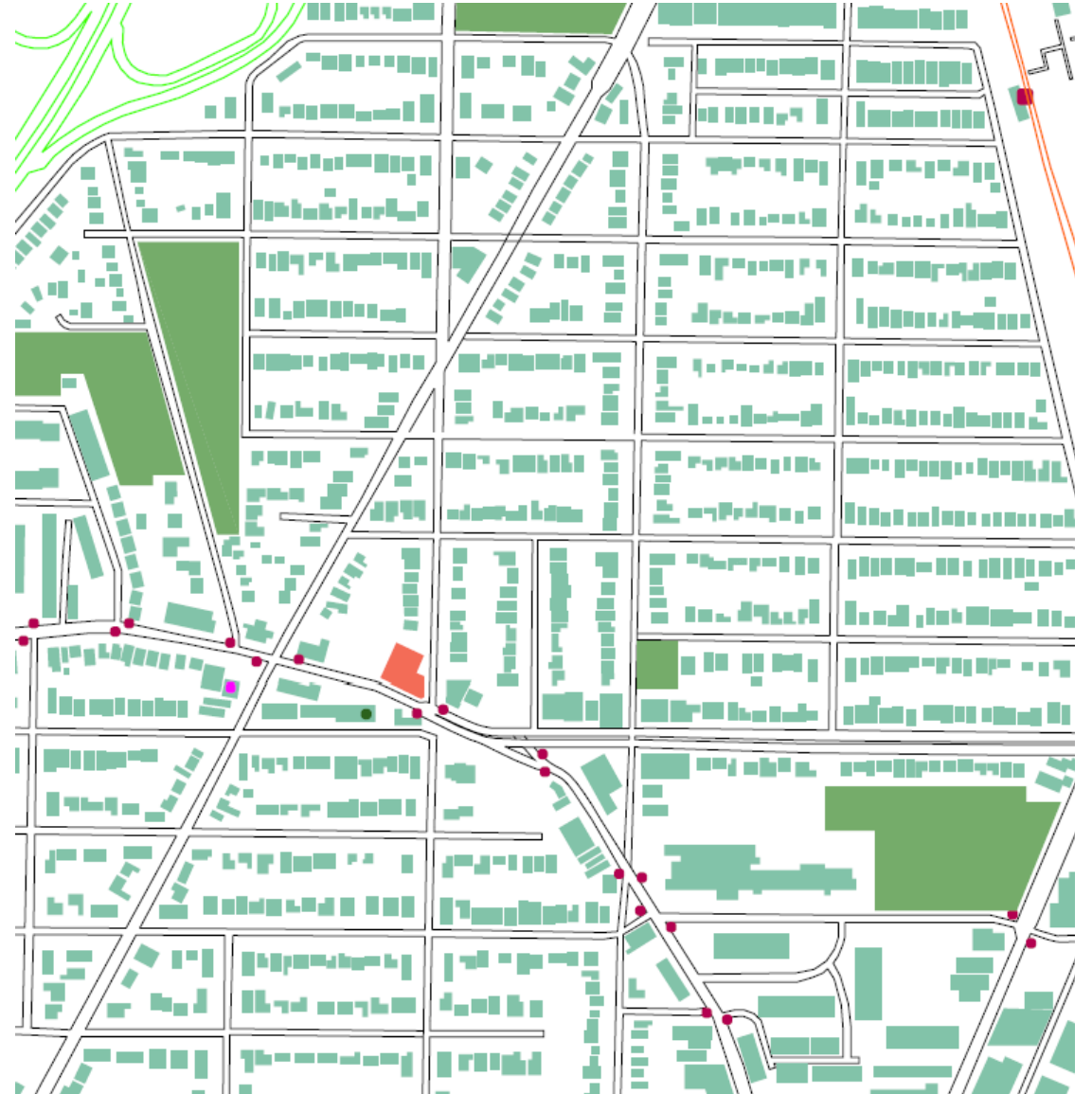
450
SF/student

**BRIDGES, MAX
ENROLLMENT CAPACITY
(370 SF/STUDENT
CONCEPT PLAN DURING
PROPERTY SEARCH)**

- Apparatus sizes
- Multiple apparatuses per student per function and storage
- Personal Space
- Ease of maneuverability
- Vocational and personal pathway opportunities

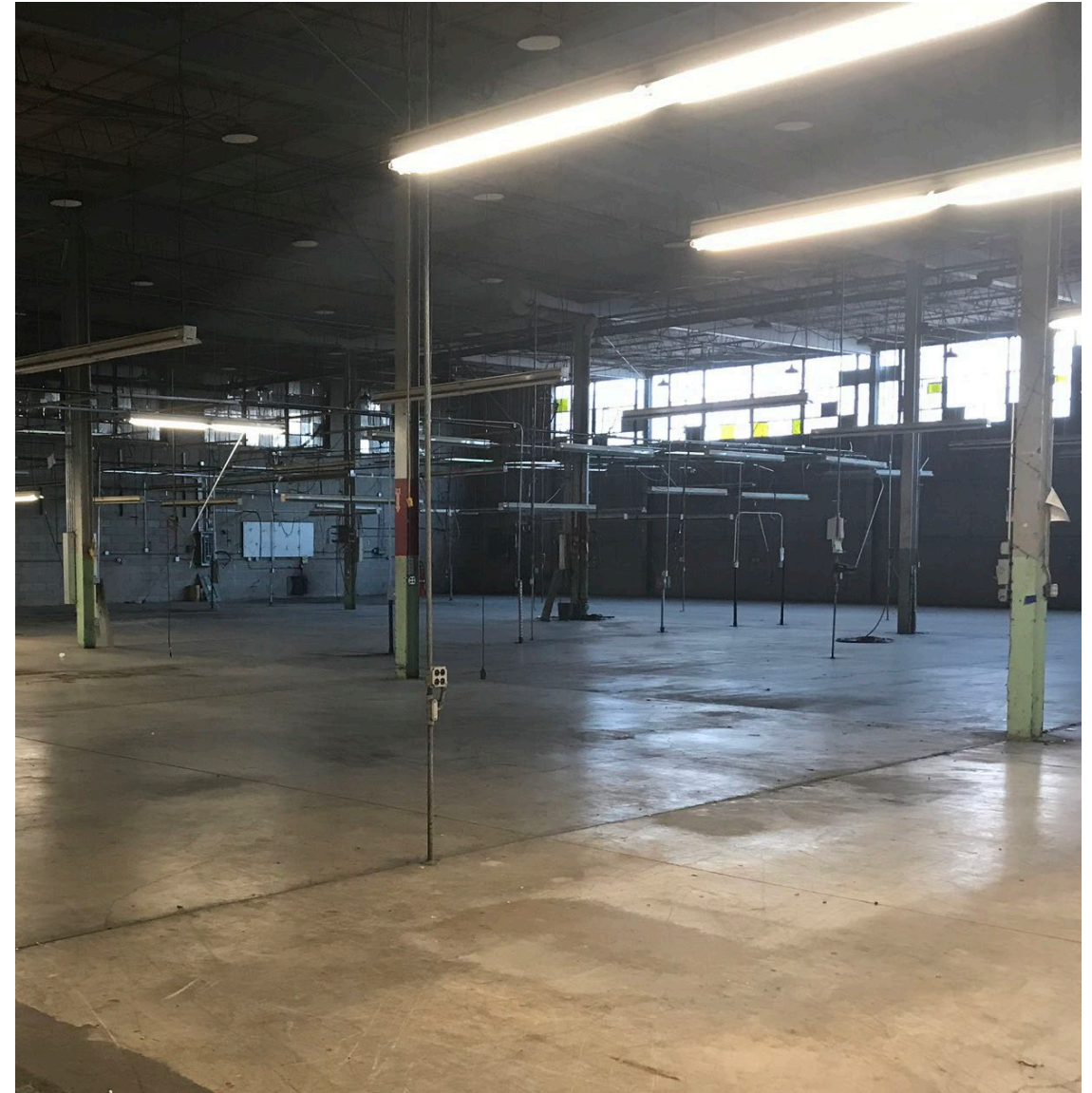
PROPERTY SEARCH

- Location studies
- Access to Public Transportation
- Access to Community Partners
- 5 buildings toured

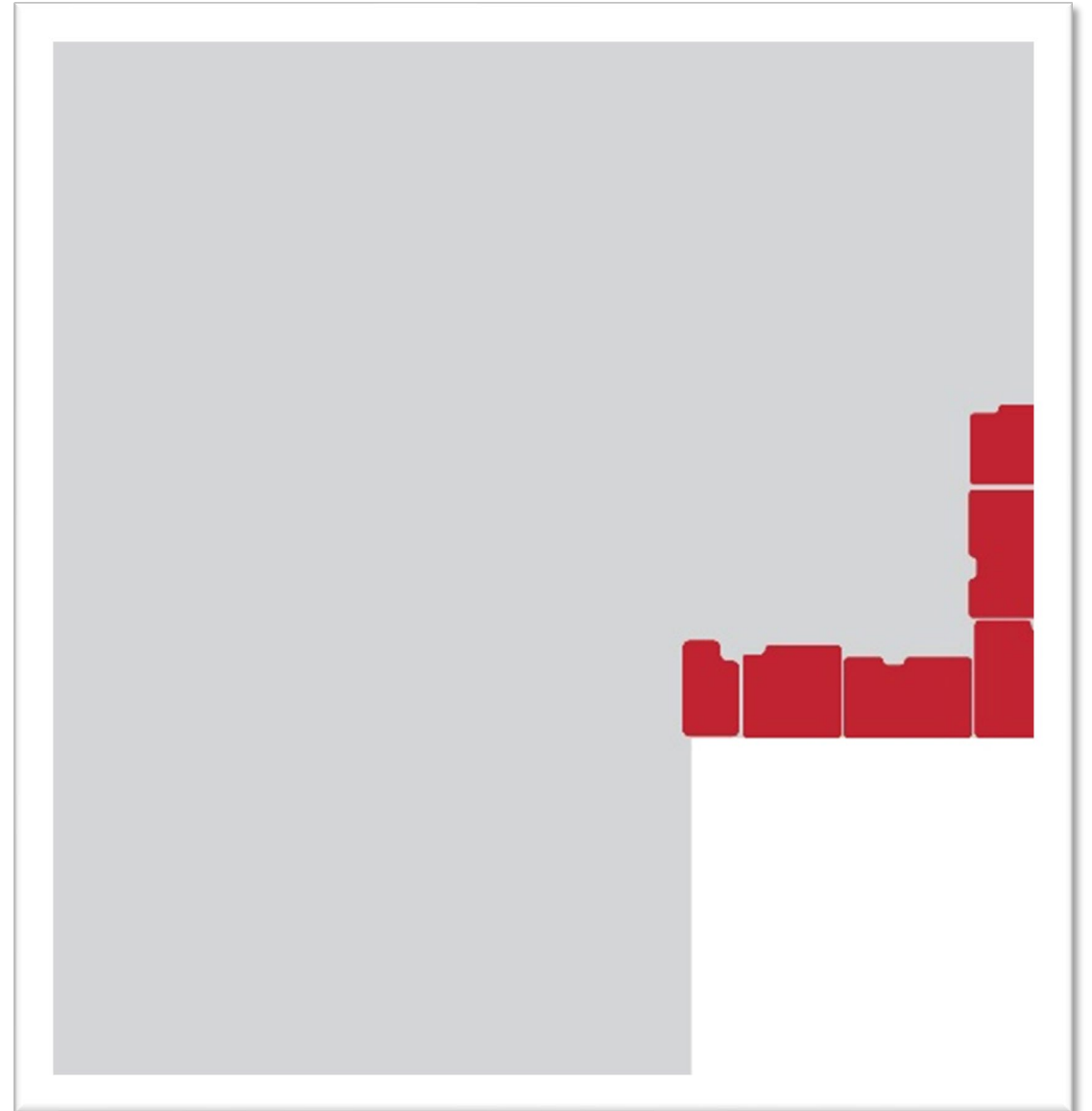


A NEW BEGINNING

- Manufacturing warehouse & office building
- 50,000 sq. ft. existing



3,586 SQUARE FEET
TO
46,000 SQUARE FEET
=
CHANGE & TRANSITION
ARE HARD!



PARENT & STUDENT ENGAGEMENT

- Village Special Use public meeting support
- On-site tours of existing building
- Immersive virtual reality
- Still image renderings
- Rendered design walkthroughs & proactive student orientations

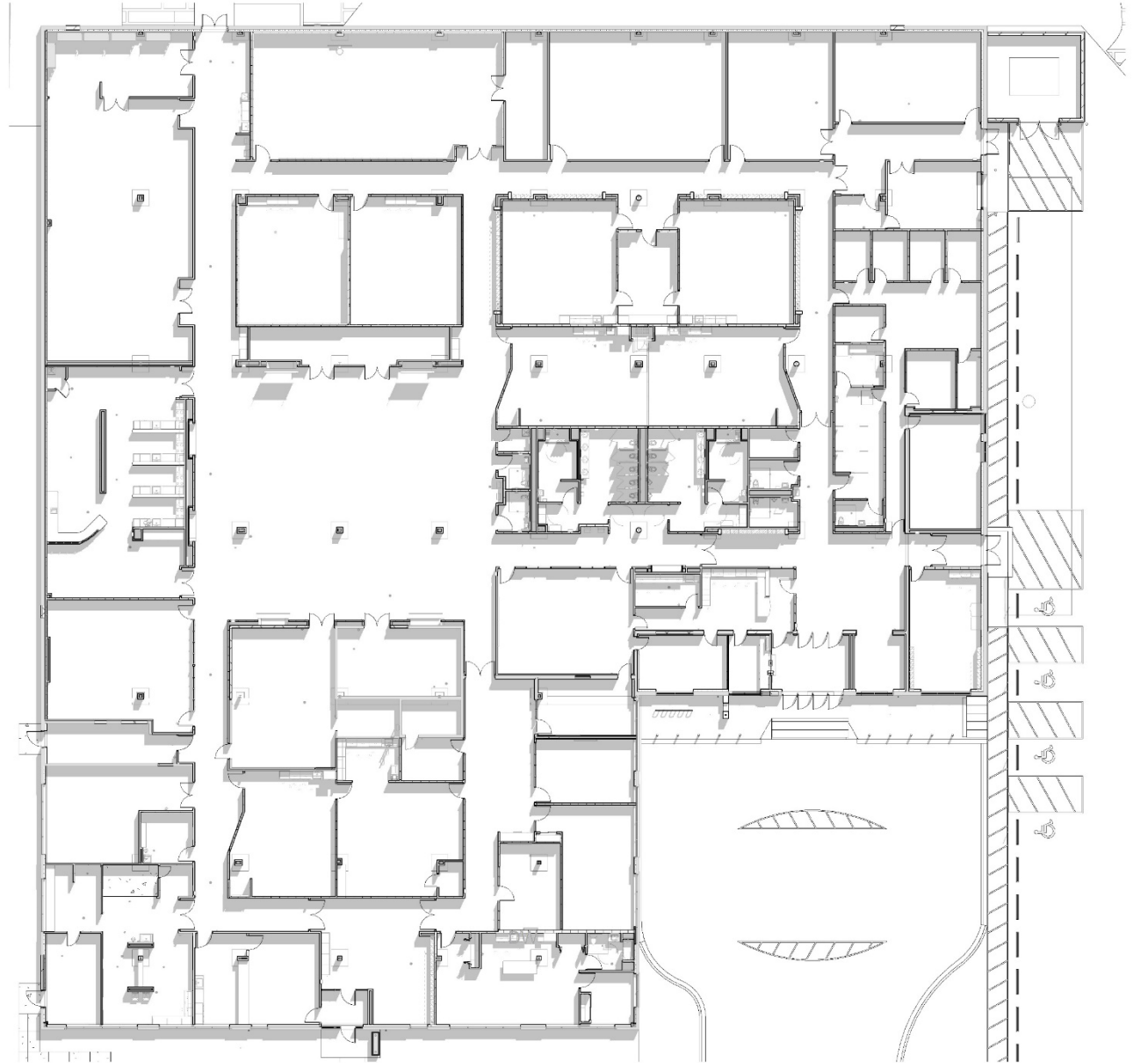


Realizing the Vision


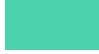



FLOOR PLAN

- Classrooms**
4,520 SF
- Learning Labs**
11,100 SF
- Common Areas**
9,750 SF
- Staff & Support**
7,250 SF
- Toilet/Mech/
Circulation**
15,954 SF

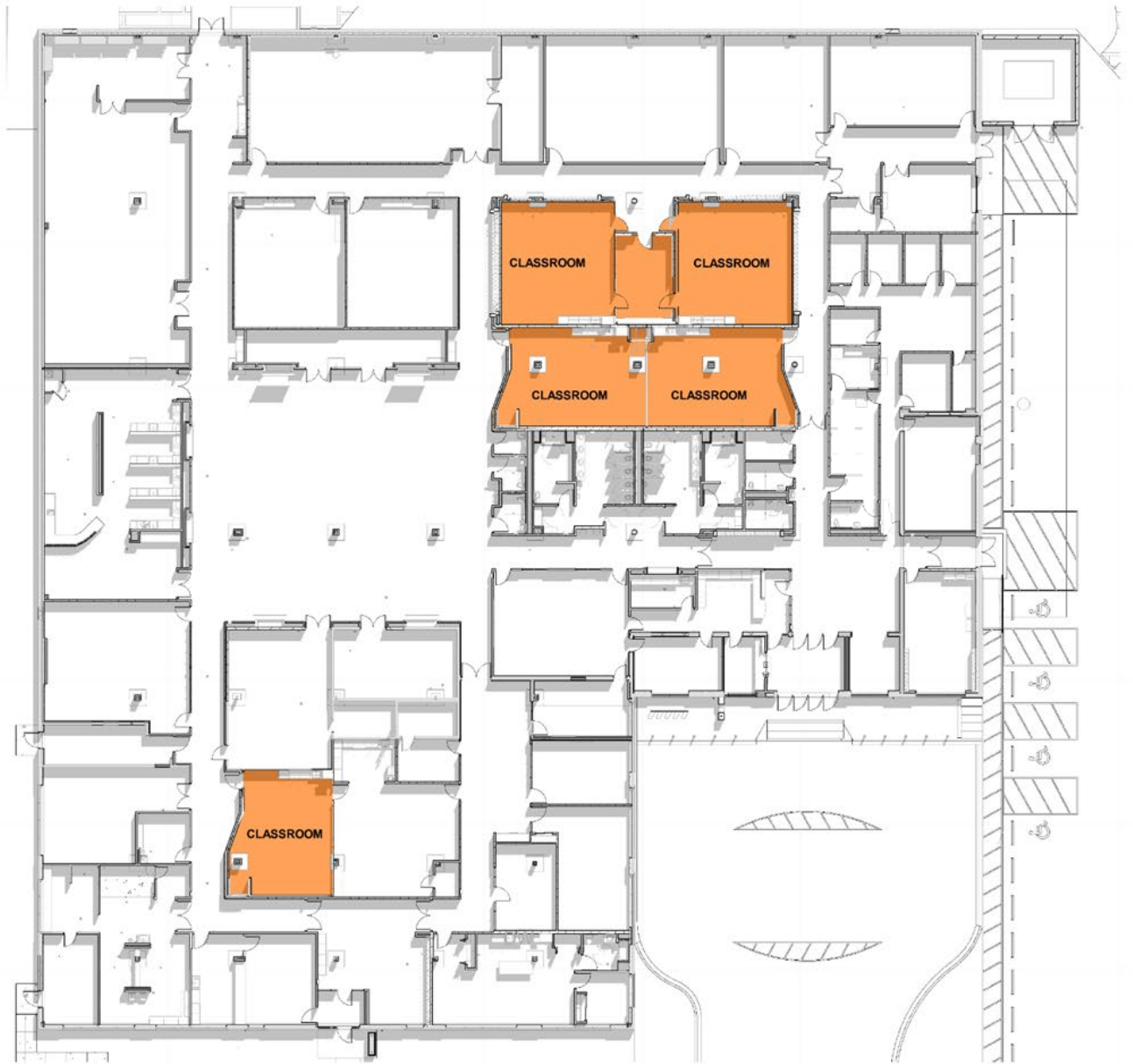
Total = 48,574 SF



FLOOR PLAN

-  Classrooms
4,520 SF
-  Learning Labs
11,100 SF
-  Common Areas
9,750 SF
-  Staff & Support
7,250 SF
-  Toilet/Mech/
Circulation
15,954 SF

Total = 48,574 SF



BUILDING BRIDGES

CLASSROOMS



BUILDING BRIDGES

CLASSROOMS

Topic: Apartment lab



Steps to make a bed

1. apply fitted sheet
2. apply flat sheet
3. place blanket
4. put pillows in pillow cases
5. place pillows on bed
6. Complete!!

Wednesday

- 9:00 - Schedule
- 10:00 - Math -
- 11:00 - Voc -
- 12:00 - Lunch
- 1:00 - Walk



CLASSROOMS


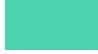





A diagram of a classroom layout divided into five vertical color-coded zones, each representing a different lighting level and its effect. The zones are: 2700K (orange), 3000K (yellow), 3500K - neutral (white), 4000K (light blue), and 5000K (dark blue). Each zone includes an icon representing its effect: a smiley face for 2700K, a lightbulb for 3000K, a lightning bolt for 4000K, and an eye for 5000K. The 3500K zone is labeled as "neutral".

2700K	3000K	3500K - neutral	4000K	5000K
calming relaxing	creating		energizing focusing	alertness awareness
use: morning arrival; room or activity transitions; reading time	use: general default in early morning or late afternoon, discussion, projects		use: after lunch to aid in energy levels; general group focus time	use: midday, peak alertness, during testing and high-focus work

BRIDGES
Niles Township District 219
Building Bridges for Better Futures

FLOOR PLAN

-  Classrooms
4,520 SF
-  Learning Labs
11,100 SF
-  Common Areas
9,750 SF
-  Staff & Support
7,250 SF
-  Toilet/Mech/
Circulation
15,954 SF

Total = 48,574 SF



BUILDING BRIDGES

COMMERCIAL KITCHEN & PREP LAB



eria
VILATIONS
x the
one floor
minimum
3 feet
hands
& water
1:20 seconds
10
e
ks
ces clean
call
y after
not meal

KL 4

KL 3

KL 2

KL 1

BUILDING BRIDGES

COMMERCIAL KITCHEN & PREP LAB



BUILDING BRIDGES

OFFICE LAB



Tasks

10 Packs
19 pages
19 8/25/24



Box label

1st - teacher
Book 3
Mads 4-6

Filing 101

Green = Billing
Blue = Contracts
Red = employee docs

Office Rules

- No horseplay
- Listen to instructions
- Communicate needs, I need help, Hire, Break
- Knowledge, Be mindful of others

BUILDING BRIDGES

COMMERCIAL & RESIDENTIAL LAUNDRY LAB



BUILDING BRIDGES

COMMERCIAL & RESIDENTIAL LAUNDRY LAB



BUILDING BRIDGES

APARTMENT LIVING LAB



BUILDING BRIDGES

APARTMENT LIVING LAB




[CLICK SLIDE FOR VIDEO LINK](#)

CHICAGO'S VERY OWN
WGNI9
NEWS






WGNI9

62° 8:52 AM

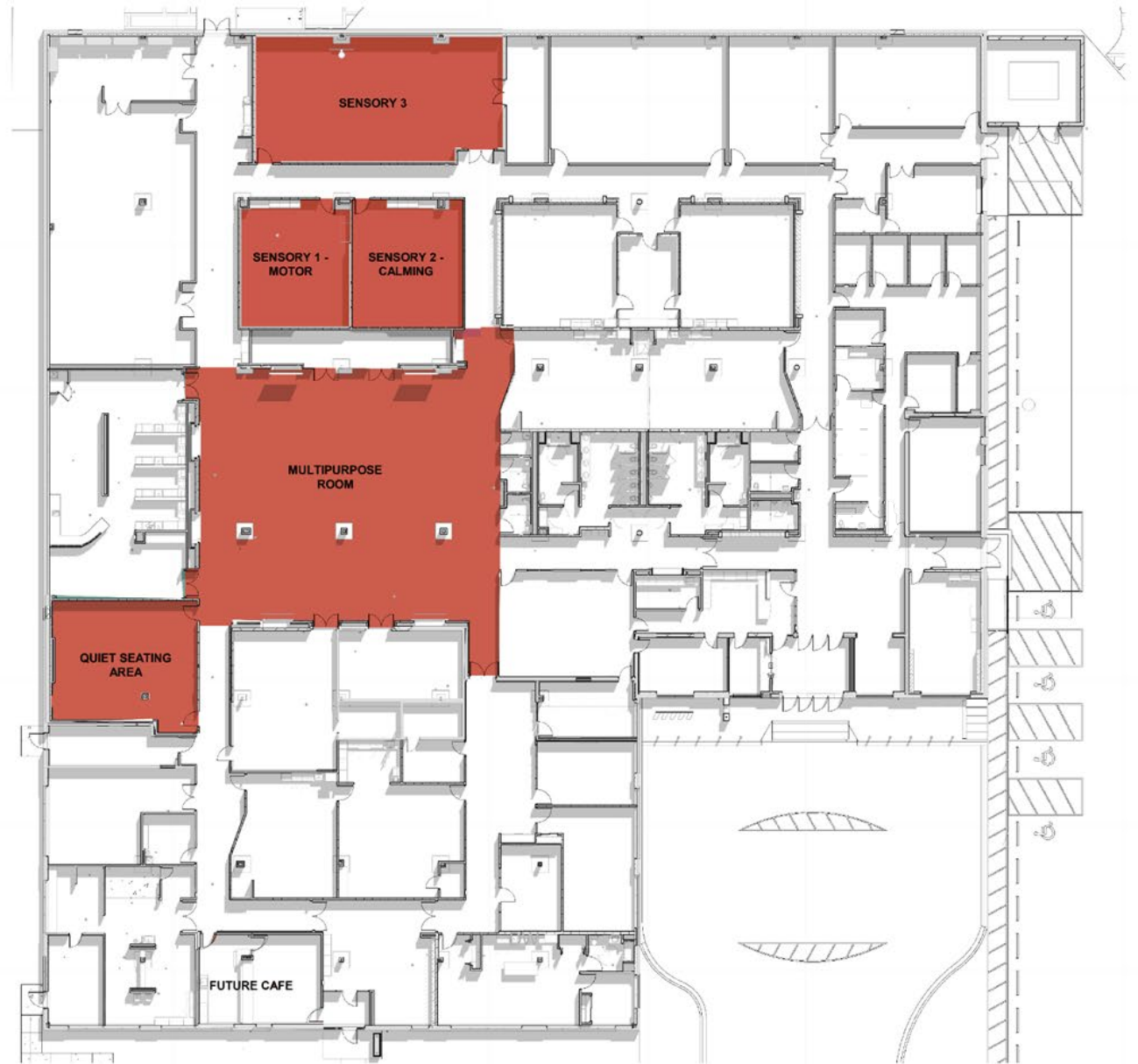
 UAT.COM

Tonight  Mostly cloudy, SSW 5-10 Lo: 58°

FLOOR PLAN

-  Classrooms
4,520 SF
-  Learning Labs
11,100 SF
-  Common Areas
9,750 SF
-  Staff & Support
7,250 SF
-  Toilet/Mech/
Circulation
15,954 SF

Total = 48,574 SF

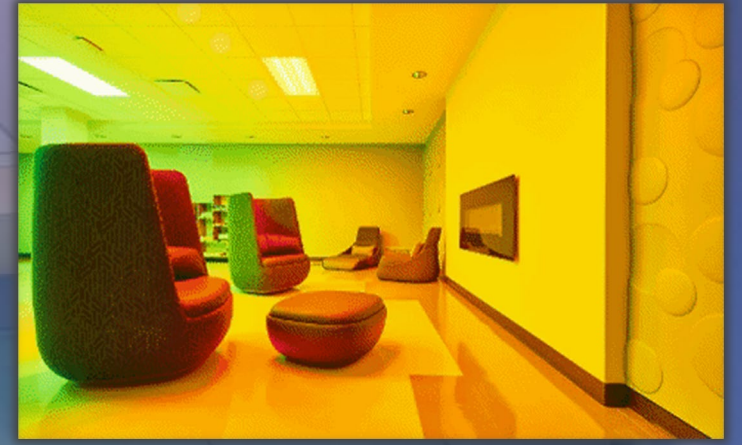


MULTIPURPOSE ROOM



BUILDING BRIDGES

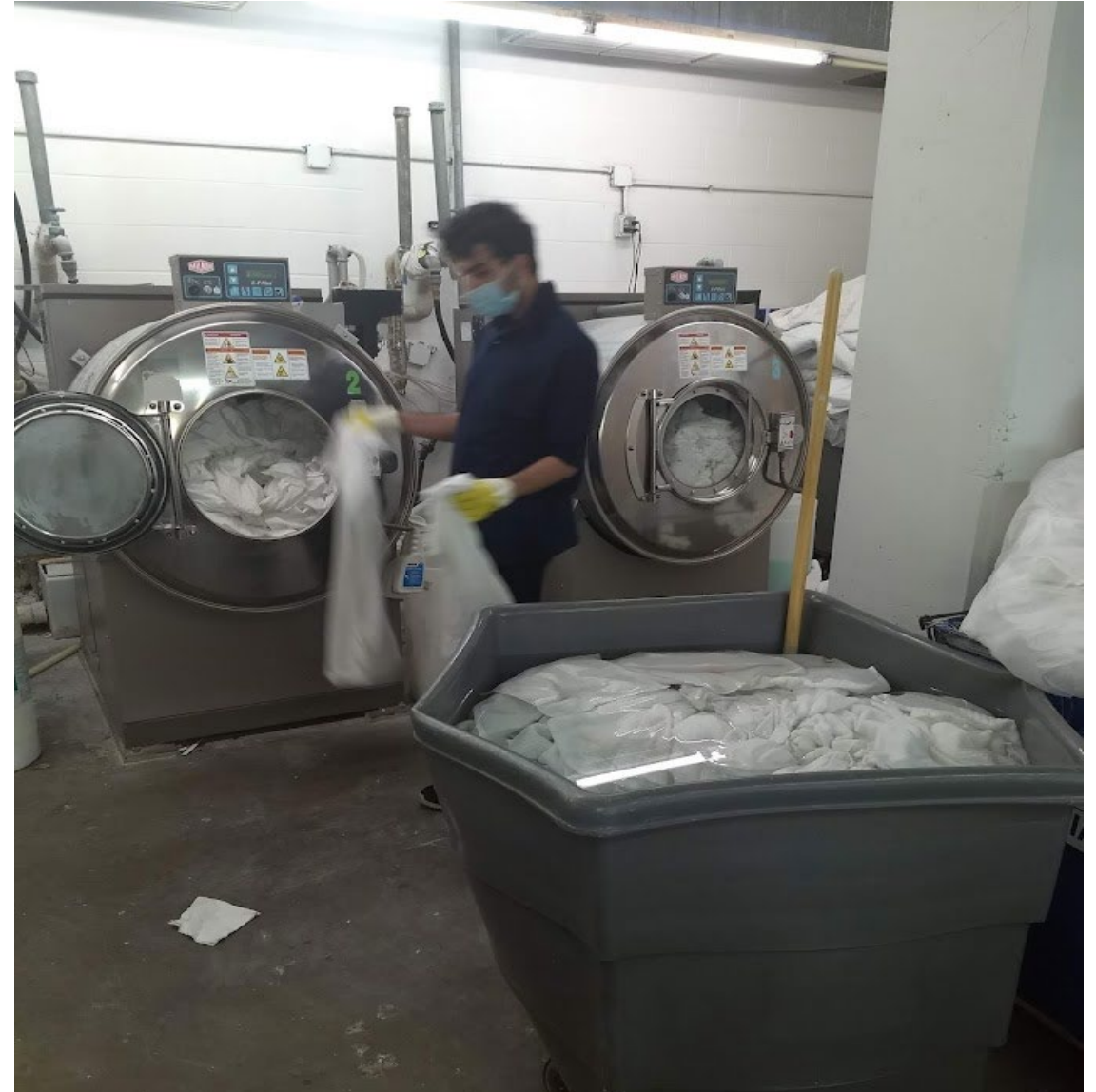
WELLNESS LOUNGE



Student Outcomes

Since opening in 2020, Bridges supports:

- 18-23 young adults with their first jobs ever each year
- 28-35 employed young adults each year
- Employers include:
 - Target
 - Mariano's Grocery Store
 - DoubleTree Hotel
 - Quest Food Services
 - Village of Skokie Chamber
 - Local Park Districts
 - Children's Care & Development Center



And two new local businesses!



[CLICK SLIDE FOR LINK](#)



“Look at what we can offer these families and these students. You’re giving them a life, you’re giving them meaning.”

Kate Seiwert, Director of Transition Services, Niles THSD 219



BRIDGES

Niles Township District 219

Building Bridges for Better Futures