



BUILT FOR EXPLORATION

Preparing Middle Schoolers
for an Effective CTE
Experience

A4LE CTE Symposium 2

Speakers:

Matthew Meehan, CEFP

Director of Educational Facilities Planning, Weymouth MA Public Schools

Matt LaRue, AIA, LEED GA

Associate Principal, HMFH Architects



Educational Visioning

Maria Weston Chapman Middle School

Weymouth, MA Public Schools

New construction (mostly)

Grades 6-8

1470 students (design capacity)

252,000 sf

Largest middle school in MA

Opened 2022

TOWN OF WEYMOUTH, MASSACHUSETTS
SCHOOL BUILDING COMMITTEE



Do you Have a
Vision
for
A New
Chapman
School??

 **We need YOU!** 

Dear Teachers, staff, administrators, parents, students, and community members,

Be a part of our Feasibility Study Visioning Team who will come together with our professional education consultants to develop a strong and lasting learning and facilities vision at our New Chapman Middle School!

We're looking for 30-40 members who are available on the three dates below to meet to discuss educational goals, how learning is being delivered, our strengths, our weaknesses, our opportunities, programmatic relationships, conceptual organization, impact of architecture, and several other topics that will help us shape the Educational Plan for a New Chapman Middle School.

Visioning Meeting Dates: **Tuesday, October 3, 2017 (up to four hours)**
 Tuesday, October 17, 2017 (up to four hours)
 Monday, October 30, 2017 (about two hours)

All meetings will start at 6:00pm and be held at the MJI, Humanities Center at WHS. To make this process most effective, it is important that you attend all three meetings.

If you would like to be a part of the Chapman Visioning Team, please send an email to schoolbuildingcommittee@weymouth.ma.us with your name, email, phone number, and a brief statement as to why you wish to be on this committee. Thank you!



Visioning

'TOWN SQUARE' MODEL

Communal Realm

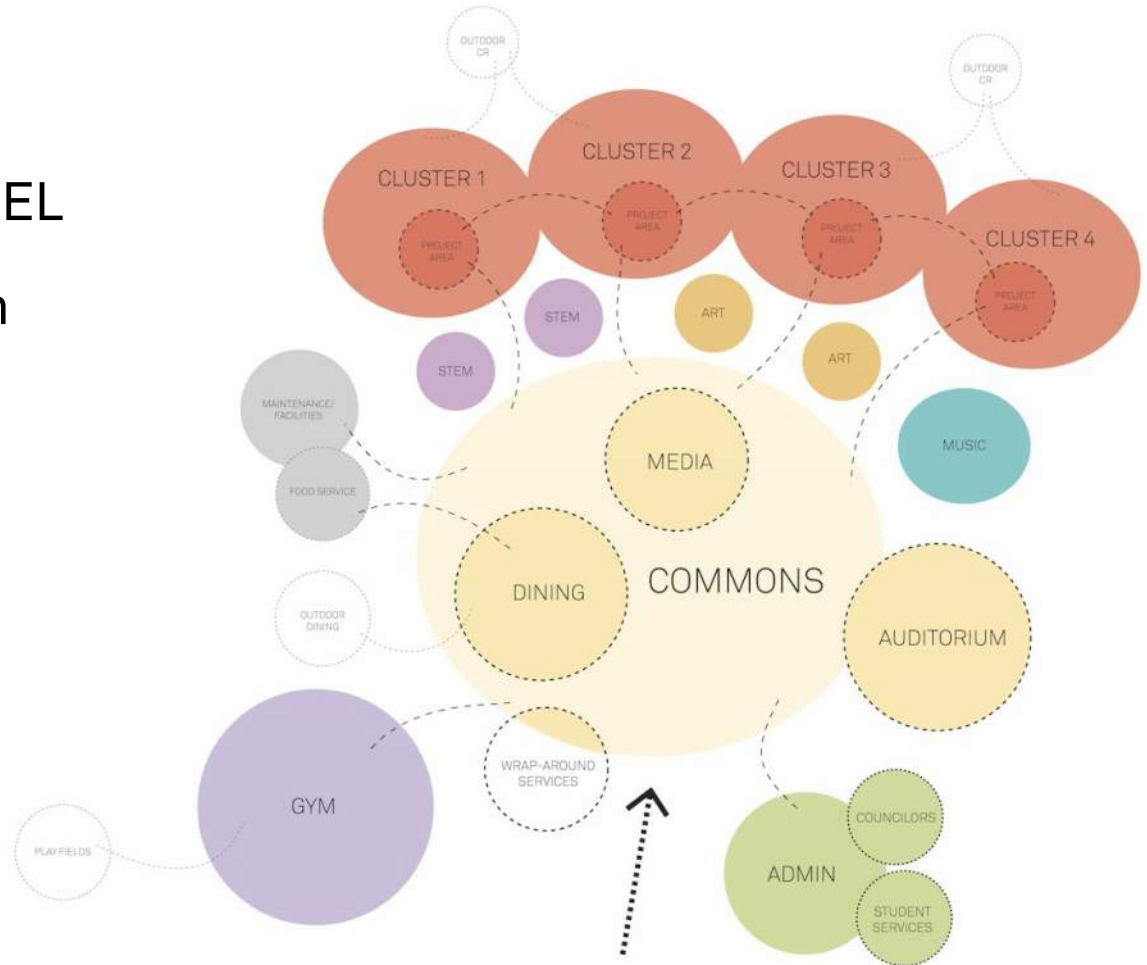
Cohort Realm

EXPLORATORY LABS

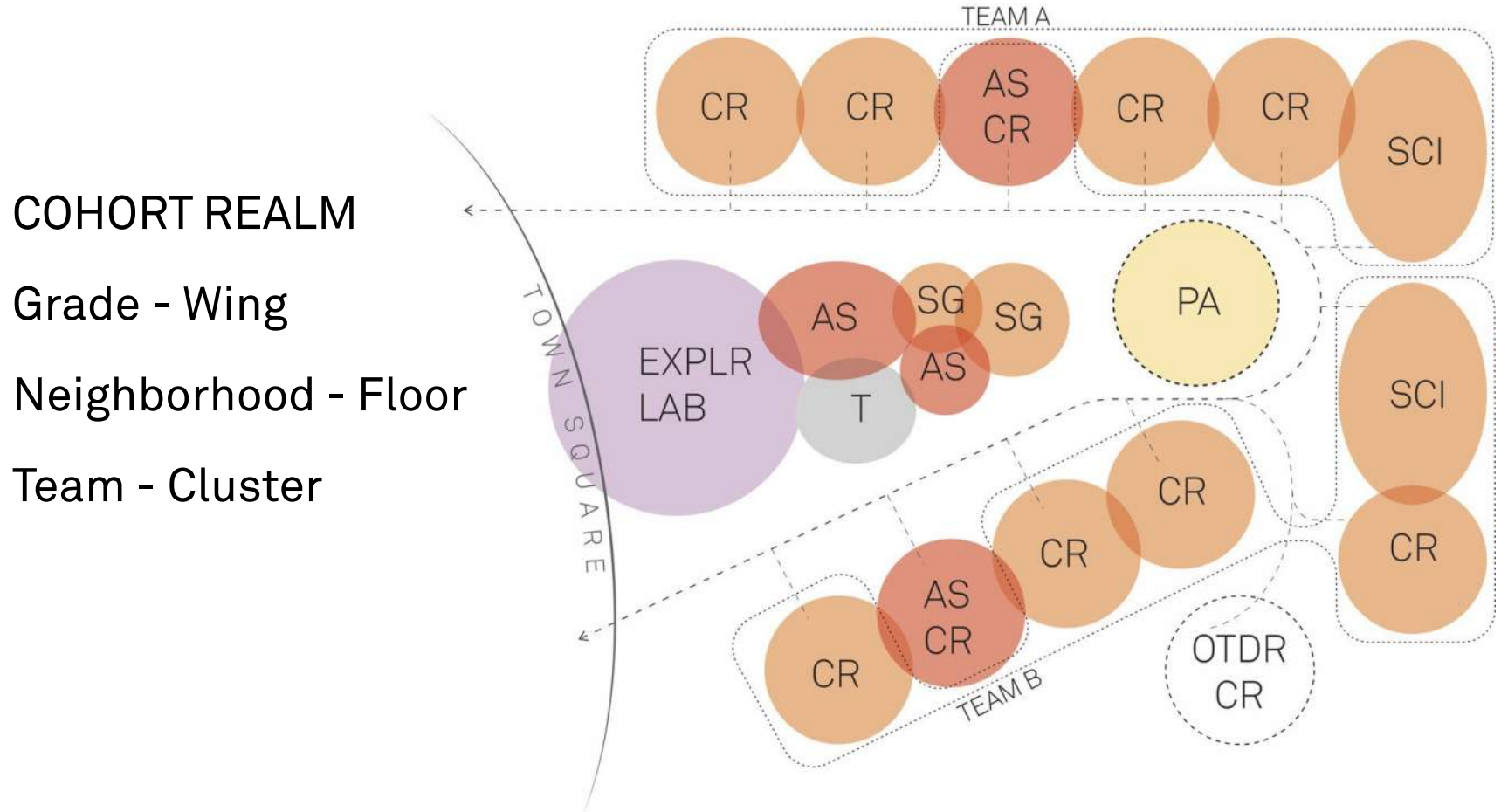
Prominence

Unique Identity

Transparency



Academic Groupings



Architectural Response

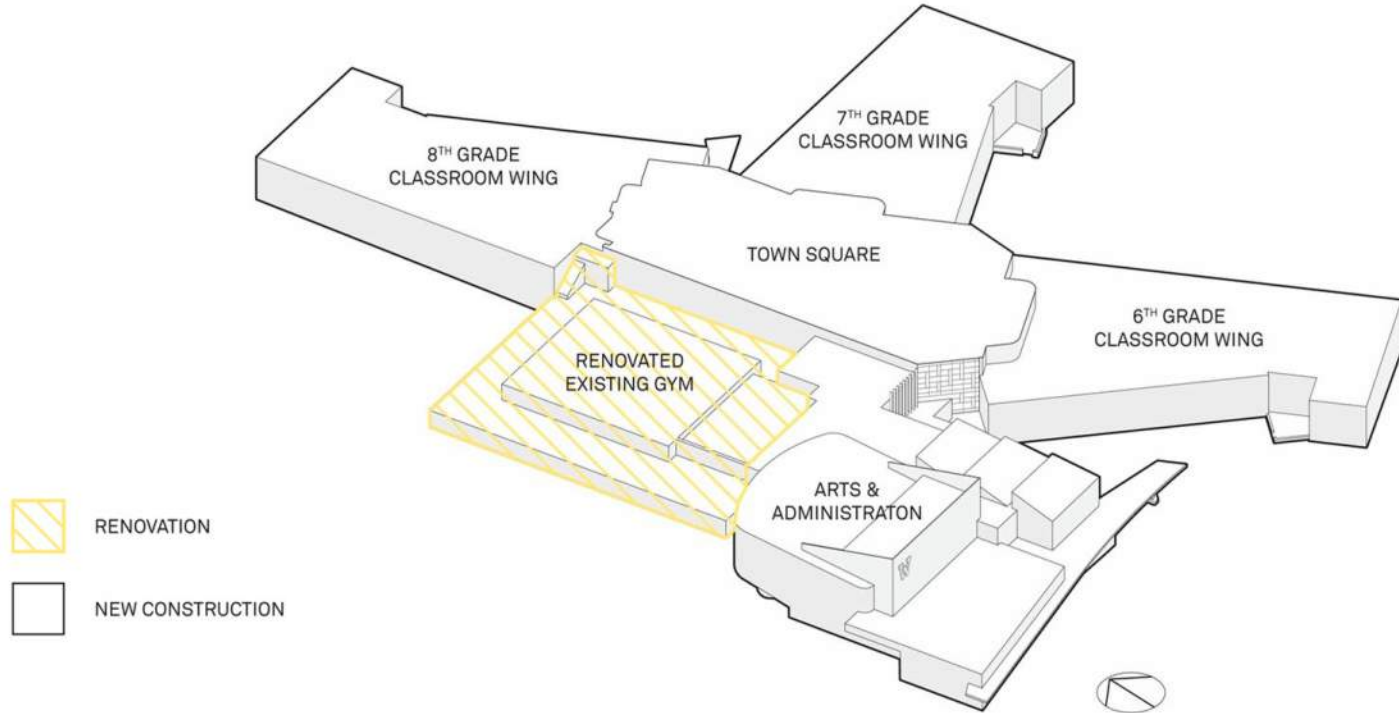
Organizational Drivers

The Site



Organizational Drivers

Gymnasium Reuse



Town Square



Neighborhood Collaborative Areas



Feature Labs

Culinary Lab

Expeditionary Lab

Theater Arts Lab

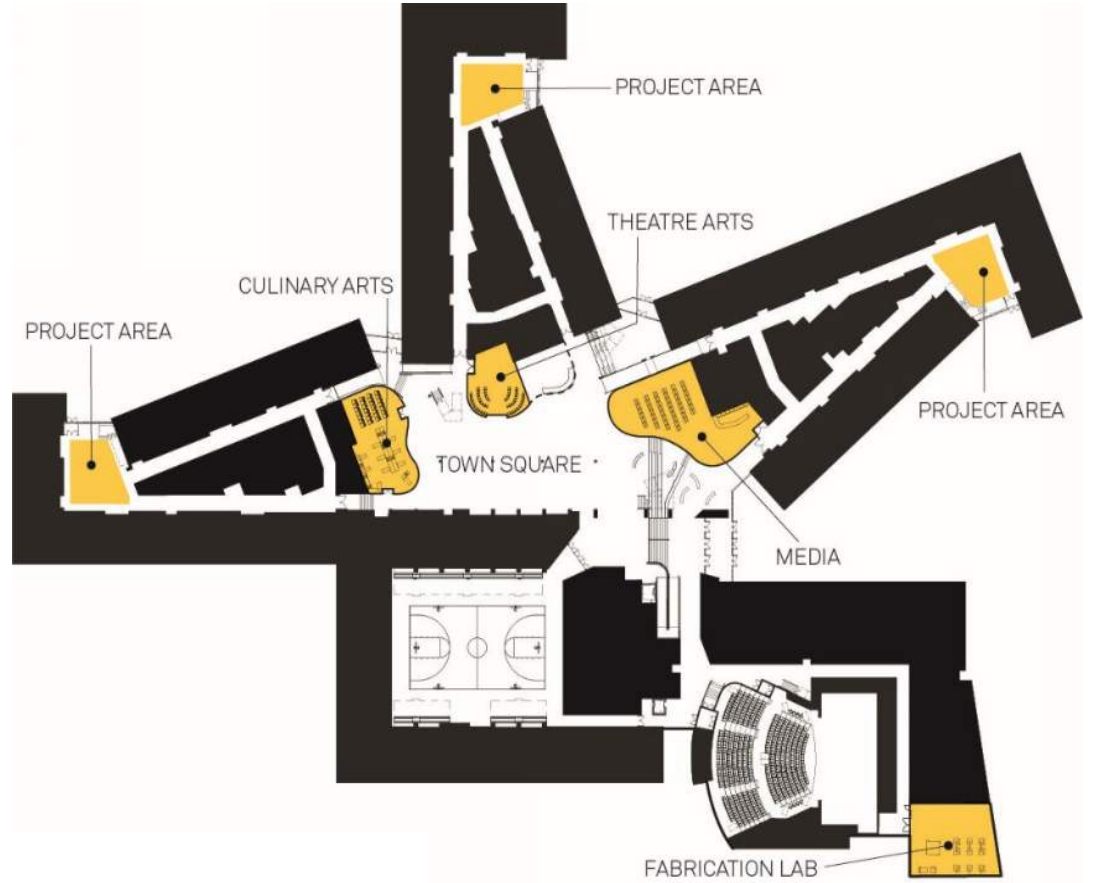
Broadcast Media Lab

Media Center

Maker Lab

Fabrication Lab

Neighborhood Collaborative Areas

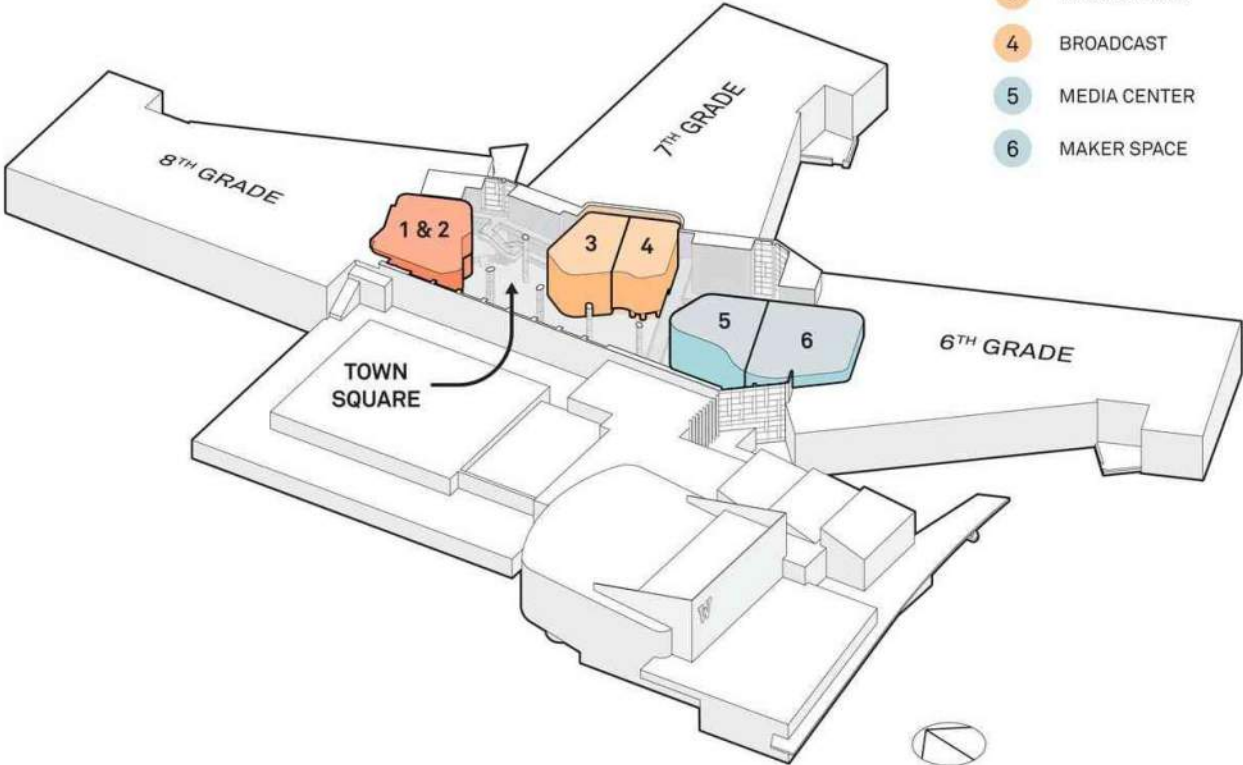


Lab Containers

Pods

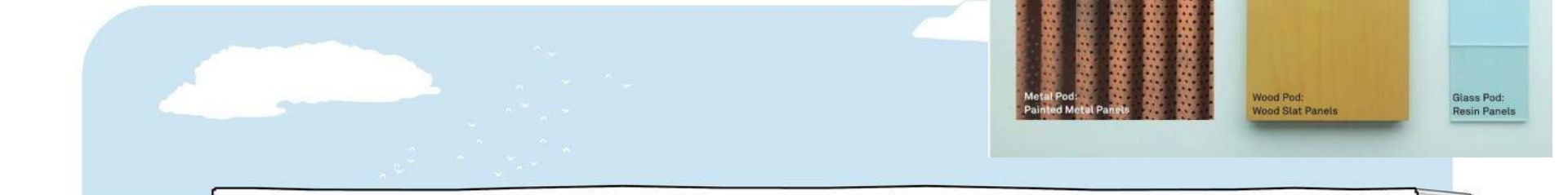
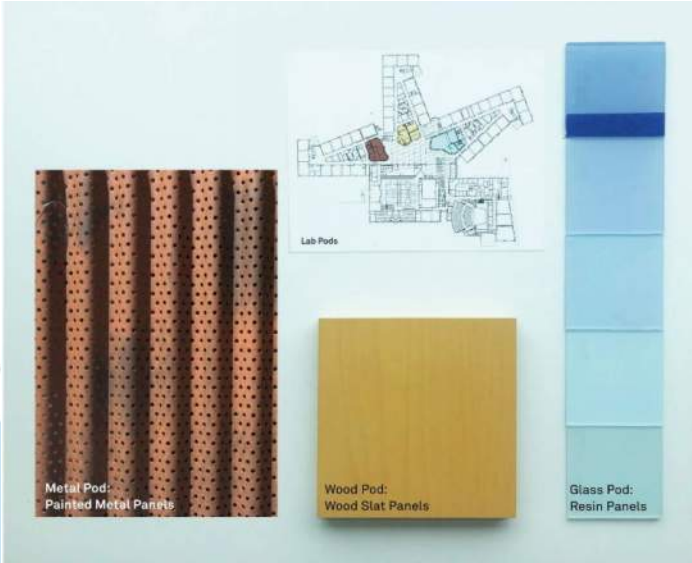
SPECIALTY LABS

- 1 CULINARY ARTS
- 2 EXPEDITIONARY LAB
- 3 THEATER ARTS
- 4 BROADCAST
- 5 MEDIA CENTER
- 6 MAKER SPACE



Pod Identity

Cladding



Culinary Arts & Expeditionary Lab

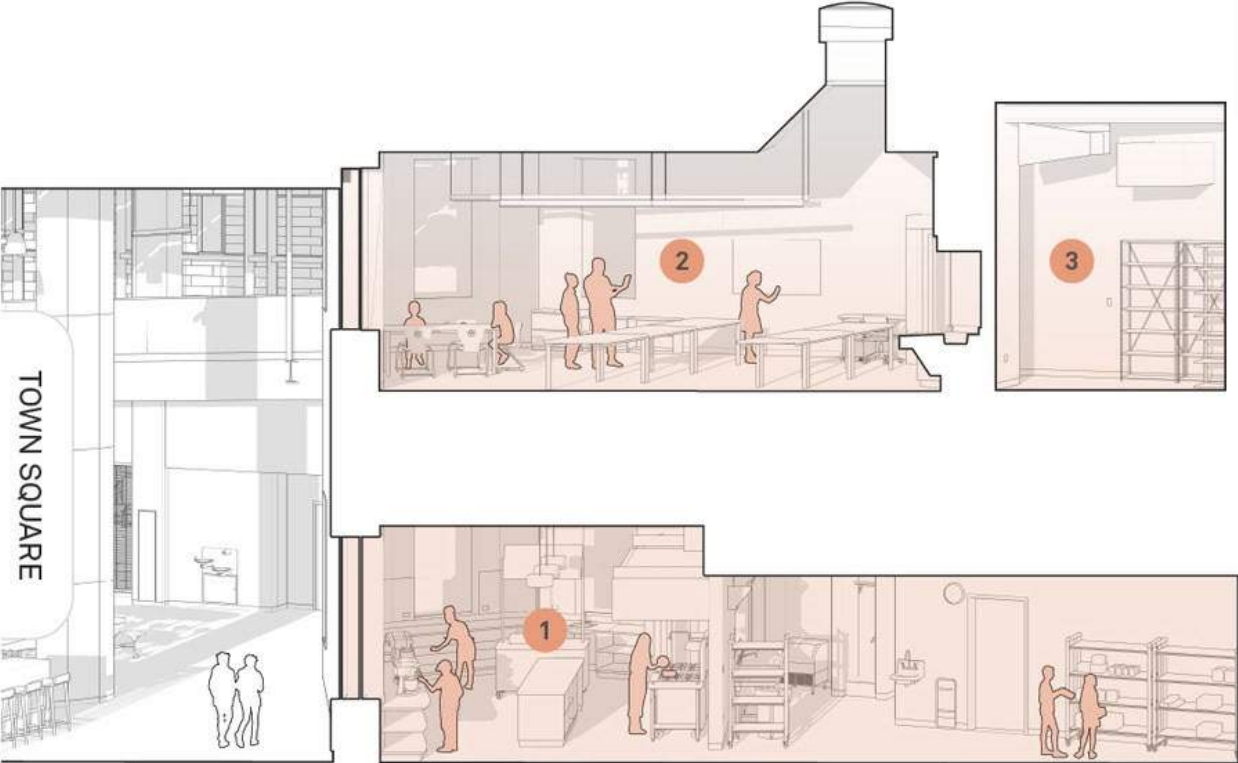
Theater Arts & Broadcasting

Media Center & Maker Space

Metal Pod



Metal Pod



CULINARY ARTS & EXPEDITIONARY LAB

- 1 Culinary arts
- 2 Expeditionary lab
- 3 Storage

Metal Pod

Expeditionary Learning Lab



Metal Pod

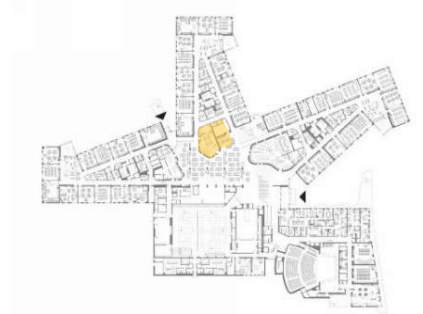
Culinary Lab



Wood Pod



Wood Pod



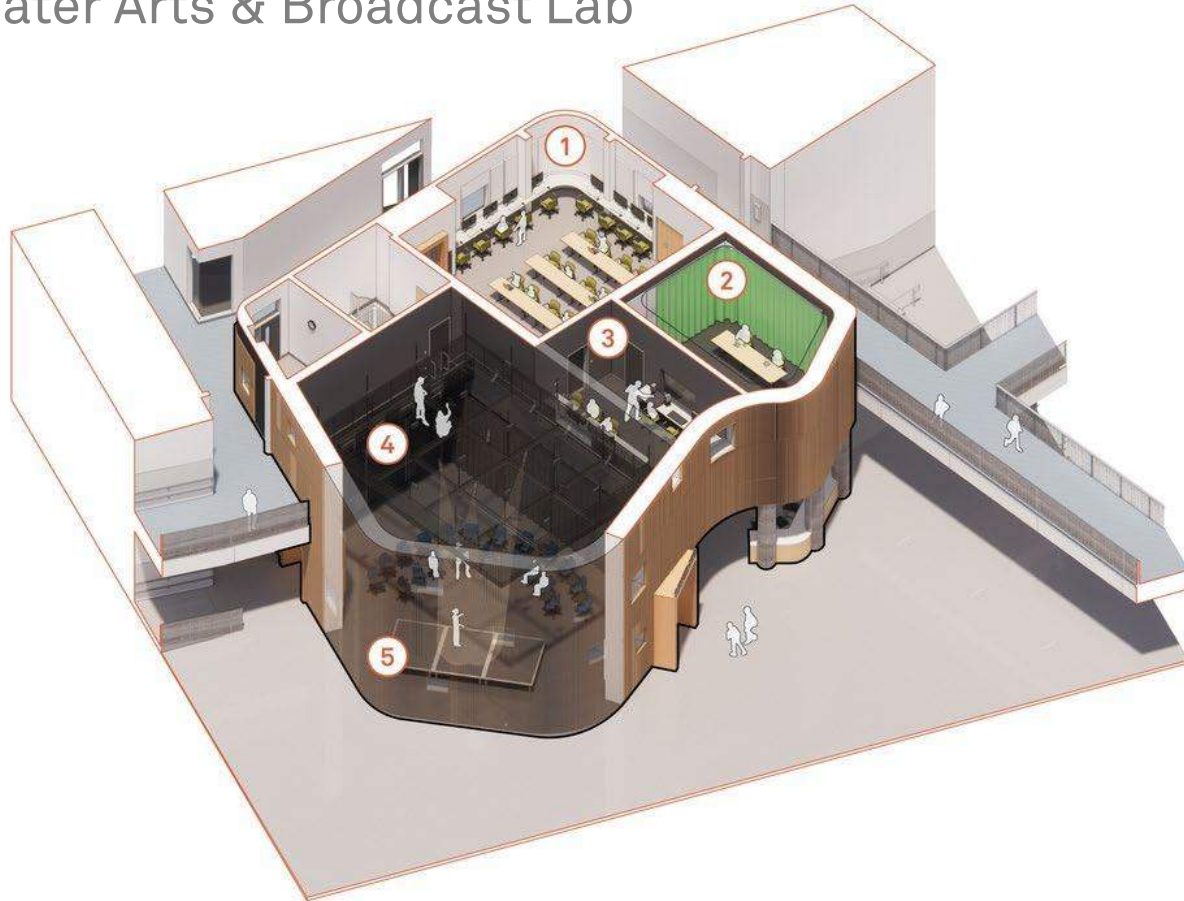
THEATER ARTS & BROADCASTING

- 1 Broadcast studio
- 2 Control room
- 3 Tension-wire grid
- 4 Theater arts classroom



Wood Pod

Theater Arts & Broadcast Lab



- 1 BROADCAST CLASSROOM
- 2 BROADCAST STUDIO
- 3 CONTROL / LIGHTING
- 4 TENSION WIRE GRID
- 5 BLACK BOX THEATER

Wood Pod

Broadcast Lab



Wood Pod

Theater Arts



Glass Pod

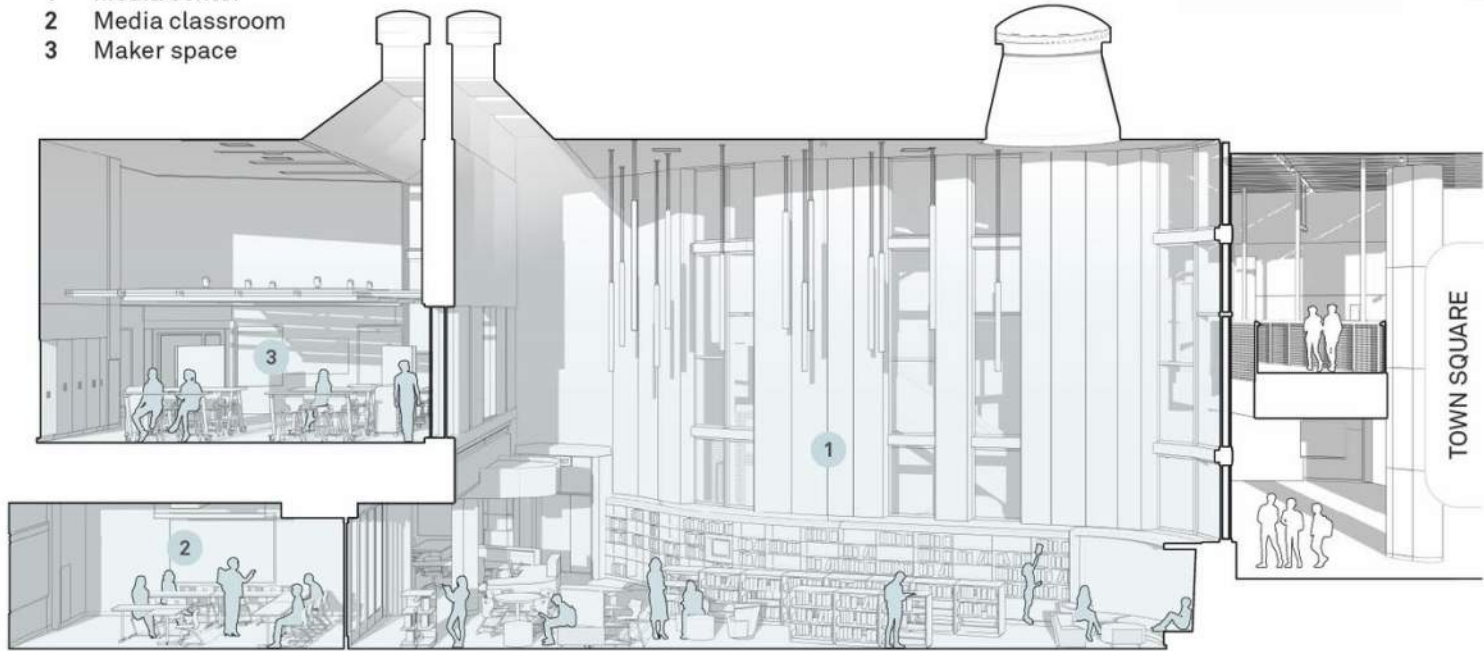


Glass Pod



MEDIA CENTER & MAKER SPACE

- 1 Media center
- 2 Media classroom
- 3 Maker space



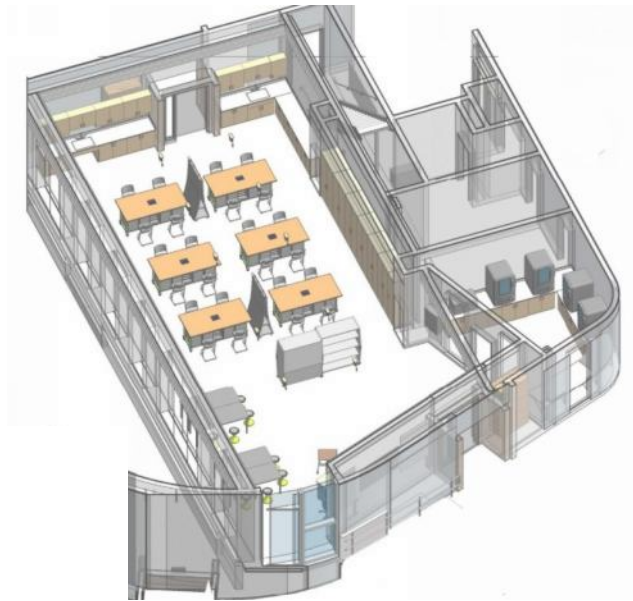
Glass Pod

Media Center & Maker Lab



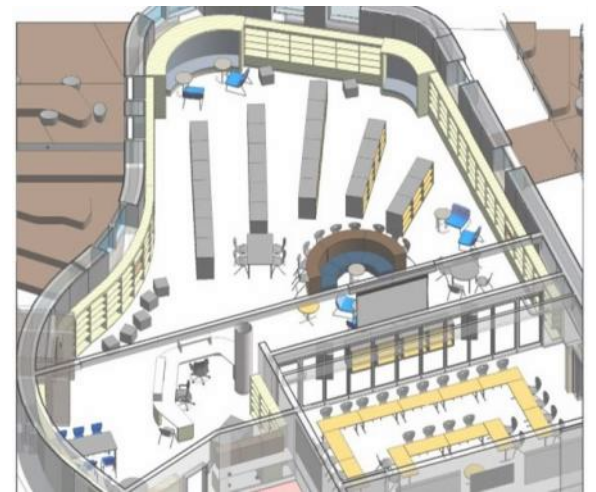
Glass Pod

Maker Lab



Glass Pod

Media Center



Fabrication Lab



Neighborhood Collaborative Areas



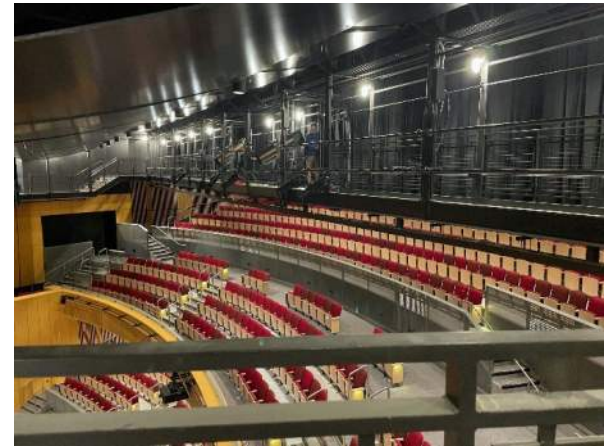




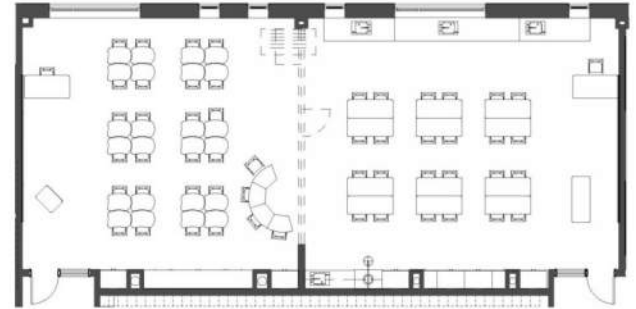
Art Studios



Performing Arts Theater



Core Classrooms



Educational Design

Chapman Middle School

Our Students

1198



54.5% High Needs

39.7% Low Income

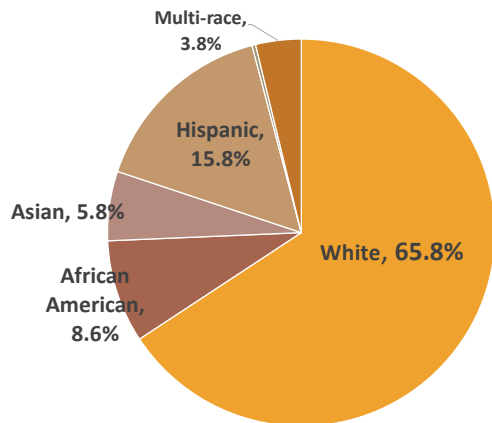
23.7% Students with Disabilities



18.2% First language not English

6.3 % ELL

30 countries represented by students



16

Number of **Exploratory** courses 6th grade students explore

26

Number of elective and lab courses 7 & 8 students can choose from

Our Staff

200 Staff

23 ESP

94 Teachers

15 Counselors

30 Special Education

6 Administrators

Athletics-Clubs

Track and Field

Cross Country

Theater Club

Volleyball

Musical Club

Basketball

Media Club

Wrestling

Our School Profile

Scan the QR code to find out about all of our school's data and information or call the school! You can also call the main office!



Project Opens Opportunities for the District

- From a Primary Model to ½ K-4 to a **K-5 Elementary Model**
- Connects Middle School **Labs to CTE** experiences at the HS
- Expands Learning **Beyond the Core** at the Middle School level
- Expands Hands on and **Project Based Learning**



- Increased focus on **student wellbeing** through spaces and new course selections

Our Labs

- Fabrication Lab - *aka Fab Lab*
- Maker Space – *aka Robotics*
- Computer Science
- Theater Arts
- Performing Art Studios
- Visual Art Studios
- Expeditionary Learning Lab
- Film Media and Broadcast Lab
- Culinary Lab
- Cardio and Fitness Labs
- Health and Wellness Labs
- Core Labs and Accelerated Labs



Fab Lab

Intro Course – Lab Safety

Wood Framing

Wood and Metal
Fabrication

Green Architecture

Stage Design, Scenography



Maker Space

Intro Course - Lab Safety
and Maker Tools

Automation and Robotics

Design and Modeling

Medical Detectives

Energy and the Environment



Culinary

Intro Course: Food Science
and Safety

Cultural Connections

Farm to Table

Chapman Chops!

Catering Club

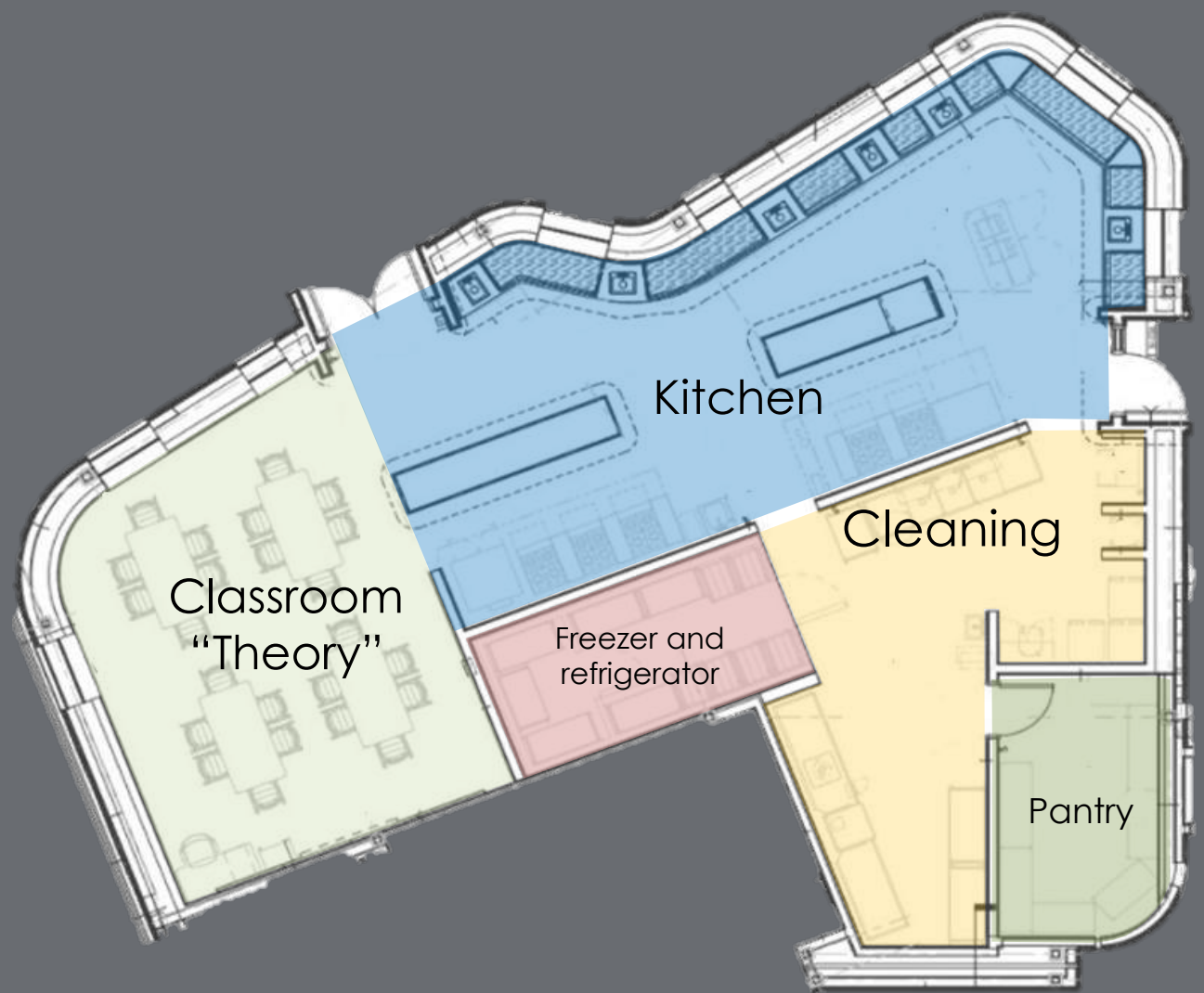


Culinary

Three spaces in one

Funding Line

Connected with
Cafeteria Vendors



Classroom
"Theory"

Kitchen

Freezer and
refrigerator

Cleaning

Pantry

Expeditionary Learning Lab

Intro to PBL

Community Journalism

Urban Design

World Of Change

Screen Writing and Production



Computer Science

Introduction to
Computer Science

Digital Citizenship
Computer Science for
Innovators and Makers
App Creators



Film, Media and Broadcast Lab

Introduction to
Communications

Film Video and Media I, II

Broadcast Studio*
(Lighting, Sound and Set Design)

Chapman Chops*

* in development



Theater Arts

A Black Box Studio

Intro to Theater Arts

Acting I, II

Script Writing

Costuming

Choreography

Stage Design and Scenography

Technical Theater

(Lighting and Sound Design)



Studio Art

Introduction to Visual Art

Graphic Arts*

Photography*

3D Art and Sculpture

Painting

Ceramics

Sketching

Advanced Art Studio

* in development



Performing Arts

Chorus 6,7,8

Select Chorus

Music Appreciation

Music Technology I,II

Guitar I,II

Instrumental Music 6,7,8

Select Band

Piano I,II

Modern Band I,II



Health, Wellness and Physical Education

Six H,W and PE Labs and Studios

Health 6

PE 6

Team Sports

Adventure and Obstacle
Course

Lifetime Sports

Cardio Sport

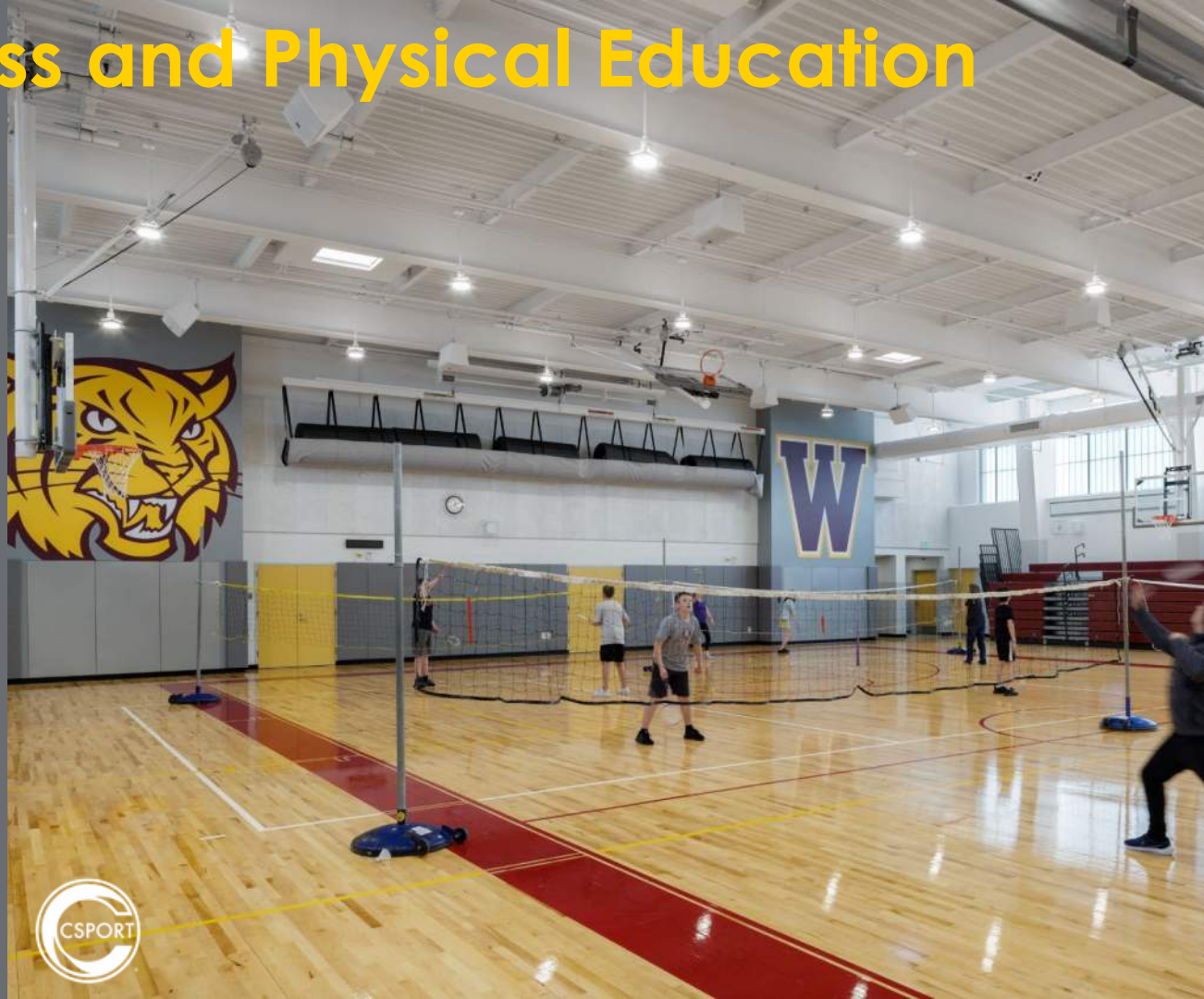
Movement and Expression

Mindful Moments

CrossFit Training

Health and Wellness

Nutrition



Core Labs

A second 'hands-on' dose
to the core

Math Lab

Accelerated Math Lab

Reading Lab

Writing Lab

Geography Lab

Science and Technology

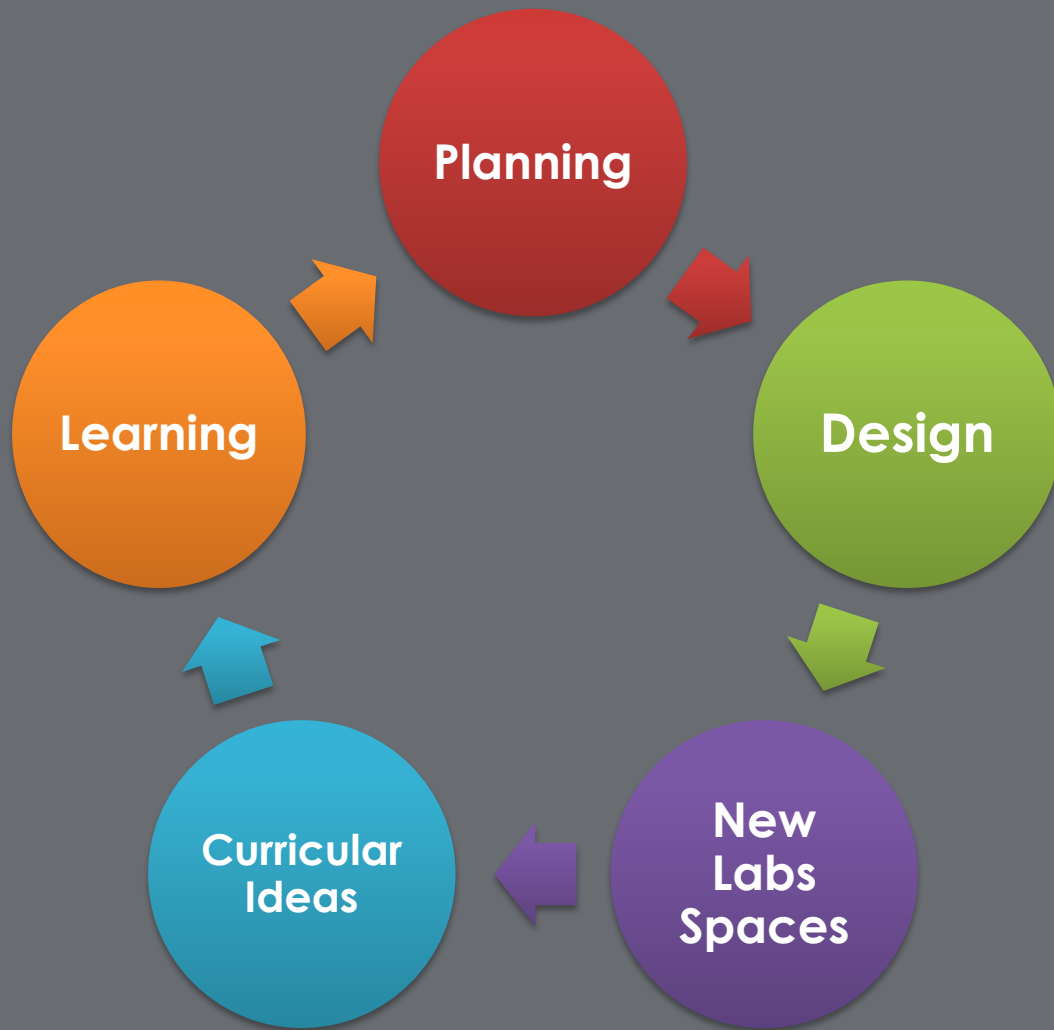


Project Opens Opportunities for the District

- From a Primary Model to ½ K-4 to an **K-5 Elementary Model**
- Connects Middle School **Labs to CTE** experiences at the HS
- Expands Learning **Beyond the Core** at the Middle School Level
- Expands Hands on and **Project Based learning**
- Provides for an Equitable Experience



- Increased focus on **student wellbeing** through spaces and new course selections



Performing Arts

Chorus 6,7,8

Select Chorus

Music Appreciation

Music Technology I,II

Guitar I,II

Instrumental Music 6,7,8

Select Band

Piano I,II

Modern Band I,II



Health, Wellness and Physical

Six H,W and PE Labs and Studios

Health 6

PE 6

Team Sports

Adventure & Obstacle
Course

Lifetime Sports

Cardio Sport

Movement & Expression

Mindful Moments

CrossFit Training

Health and Wellness

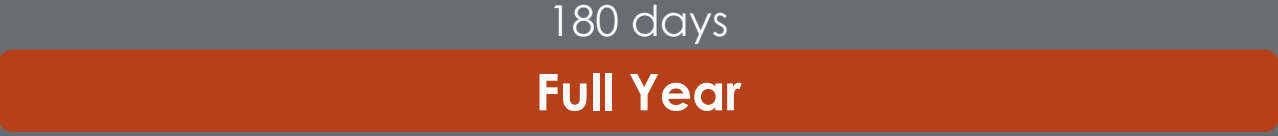
Nutrition



How we do it

Our Master Schedule

The Core



Electives 7,8



Exploratory 6

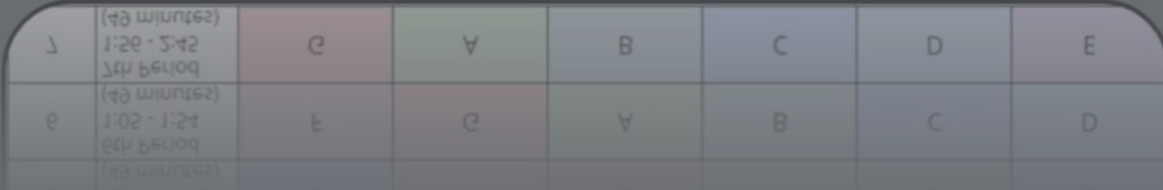


How we do it – 6 x 7 Day Cycle

MWC Rotation
2022-2023

Period	Day	1	2	3	4	5	6
1	1st Period 8:20 - 9:09 (49 minutes)	A	B	C	D	E	F
2	2nd Period 9:11 - 10:00 (49 minutes)	B	C	D	E	F	G
3	3rd Period 10:02 - 10:51 (49 minutes)	C	D	E	F	G	A
4	4th Period 10:53 - 12:14 (79 minutes) 3 Lunch Cycles	D	E	F	G	A	B
5	5th Period 12:14 - 1:03 (49 minutes)	E	F	G	A	B	C
6	6th Period 1:05 - 1:54 (49 minutes)	F	G	A	B	C	D
7	7th Period 1:56 - 2:45 (49 minutes)	G	A	B	C	D	E

Odd
Days

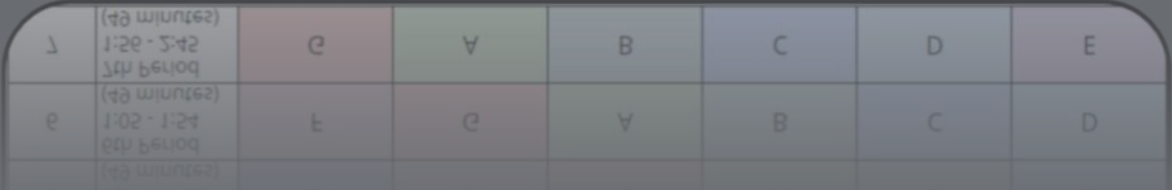


How we do it – 6 x 7 Day Cycle

MWC Rotation
2022-2023

Period	Day	1	2	3	4	5	6
1	1st Period 8:20 - 9:09 (49 minutes)	A	B	C	D	E	F
2	2nd Period 9:11 - 10:00 (49 minutes)	B	C	D	E	F	G
3	3rd Period 10:02 - 10:51 (49 minutes)	C	D	E	F	G	A
4	4th Period 10:53 - 12:14 (79 minutes) 3 Lunch Cycles	D	E	F	G	A	B
5	5th Period 12:14 - 1:03 (49 minutes)	E	F	G	A	B	C
6	6th Period 1:05 - 1:54 (49 minutes)	F	G	A	B	C	D
7	7th Period 1:56 - 2:45 (49 minutes)	G	A	B	C	D	E

Even
Days



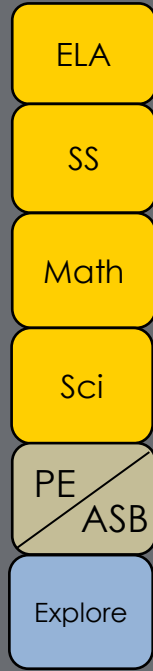
Stepped Schedule

MWC Rotation
2022-2023

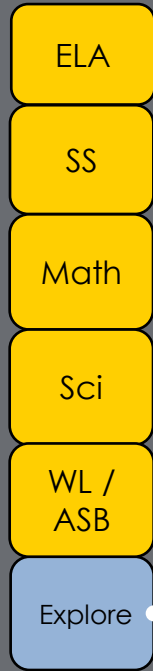
Period	Day	1	2	3	4	5	6
1	1st Period 8:20 - 9:09 (49 minutes)	A	B	C	D	E	F
2	2nd Period 9:11 - 10:00 (49 minutes)	B	C	D	E	F	G
3	3rd Period 10:02 - 10:51 (49 minutes)	C	D	E	F	G	A
4	4th Period 10:53 - 12:14 (79 minutes) 3 Lunch Cycles	D	E	F	G	A	B
5	5th Period 12:14 - 1:03 (49 minutes)	E	F	G	A	B	C
6	6th Period 1:05 - 1:54 (49 minutes)	F	G	A	B	C	D
7	7th Period 1:56 - 2:45 (49 minutes)	G	A	B	C	D	E

How we do it

Before



5,6



7,8

6 Periods
53-59 Minutes



After



7 Periods
49 Minutes

Exploratory

vs.

Elective

All students engage in exploring all labs and courses so they can be **exposed** to as many different learning opportunities outside of the core. The intention is to spark interest where it may not have been before.

Grade 6

All students engage in **choosing** courses based on their interest. The purpose of the electives is for students to dive deeper into subject matter which infuses them with a rich, in depth, standards based learning experience.

Grades 7 and 8

Lets look at Exploratories

Term 1

Odd days	Exploratory	Exploratory					
Even days	Exploratory	Exploratory					

Term 2

Odd days	Exploratory	Exploratory					
Even days	Exploratory	Exploratory					

Term 3

Odd days	Exploratory	Exploratory					
Even days	Exploratory	Exploratory					

Term 4

Odd days	Exploratory	Exploratory					
Even days	Exploratory	Exploratory					

16

Let's look at the Electives

Semester 1

Odd days



Even days



Semester 2

Odd days



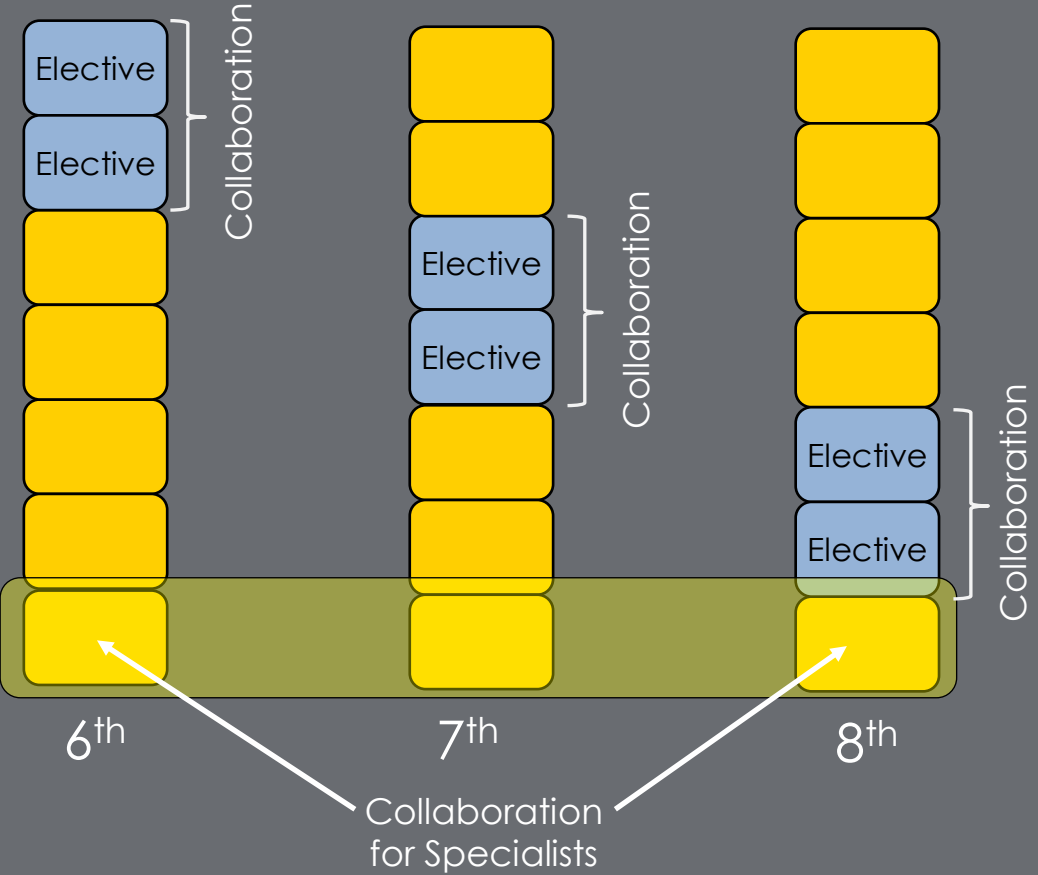
Even days



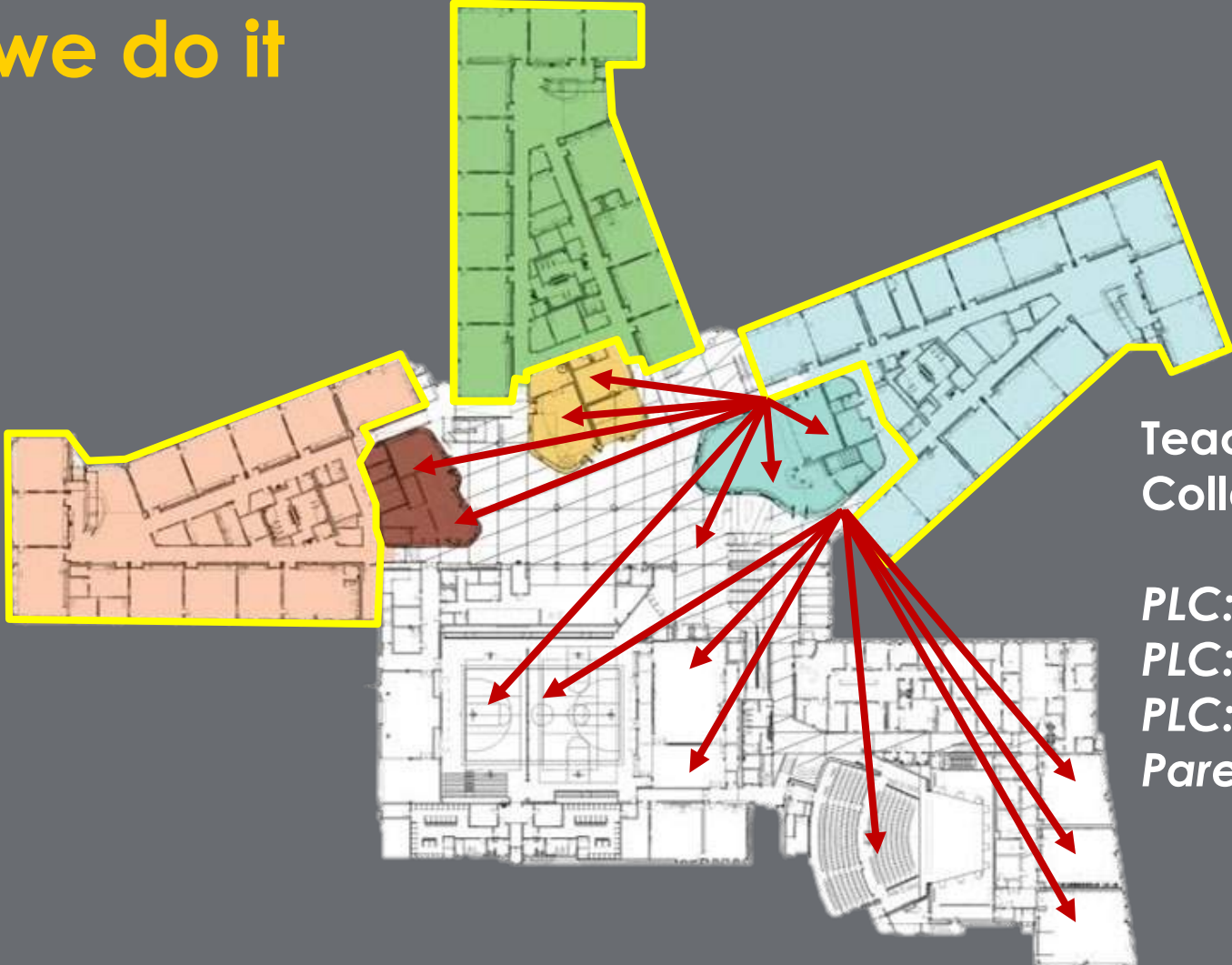
8

How we do it

Grade Level Movement



How we do it



**Teacher
Collaboration**

- PLC: PBL*
- PLC: Content*
- PLC: Team*
- Parent Meetings*

CTE Connections

Chapman
Middle
School



Weymouth
High
School

CTE in MA: Chapter 74

 The Department has moved to 135 Santilli Highway in Everett. The Department's office and Licensure Welcome Center are open. The new location has free parking and is a short walk from the Wellington station on the MBTA's Orange Line.



Most
Requested:

Licensure

Learning
Standards

MCAS

Educator
Evaluation



Career Technical Education

Information for Families

Admissions

After Dark Programs

Advisory Committees

Student Organizations

Chapter 74 Programs

Chapter 74 Programs

Chapter 74-approved vocational technical education programs are programs that meet the definition of vocational technical education contained in Massachusetts General Law Chapter 74. Districts apply for program approval to DESE's Office for College, Career, and Technical Education (OCCTE) pursuant to Chapter 74 and the Vocational Technical Education Regulations. Note that all Chapter 74-approved vocational technical education programs meet the Perkins Act definition of career and technical education. Chapter 74 programs are considered by the Department to be [High Quality College and Career Pathways](#).

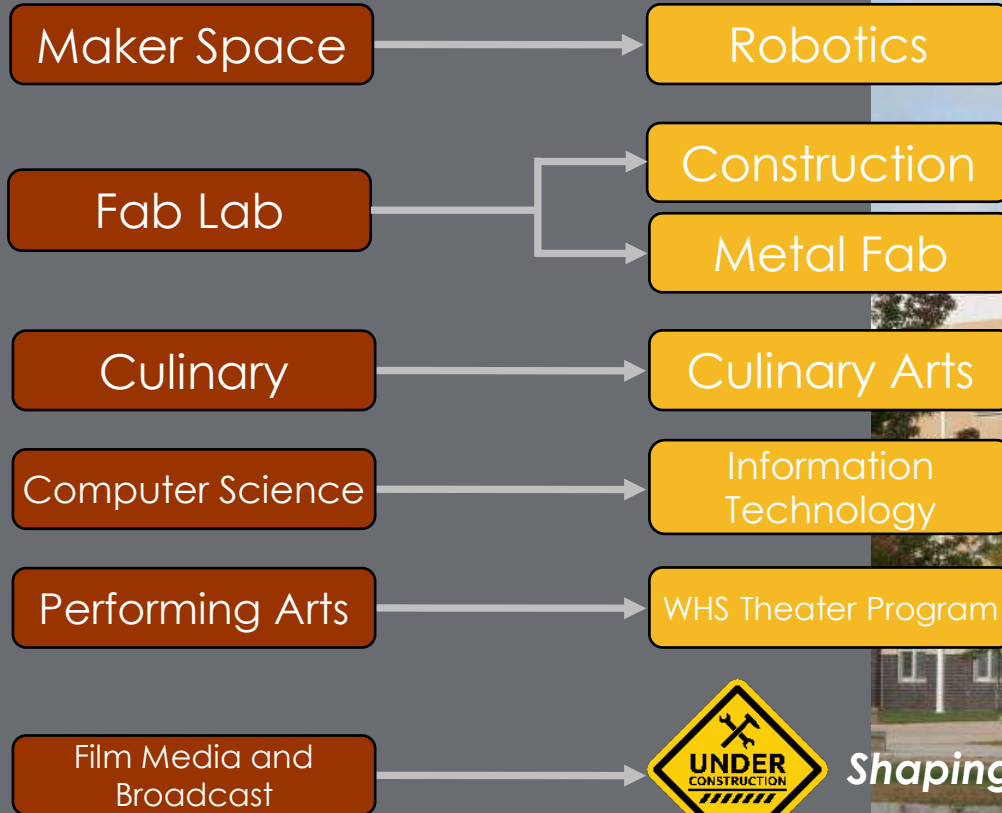
For School Districts considering applying for new Chapter 74 programs, see resources at [Massachusetts Chapter Program Application](#) page.

- [Massachusetts School Finder](#)



Connecting to WHS CTE

Ch. 74 Career and Technical Education Program



Shaping the Future

Questions

