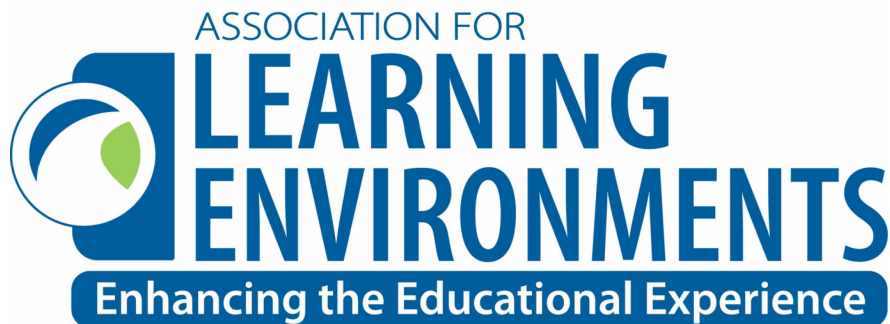


AWARDS OF EXCELLENCE

A4LE Southern CA Chapter

2026





ASSOCIATION FOR

LEARNING ENVIRONMENTS

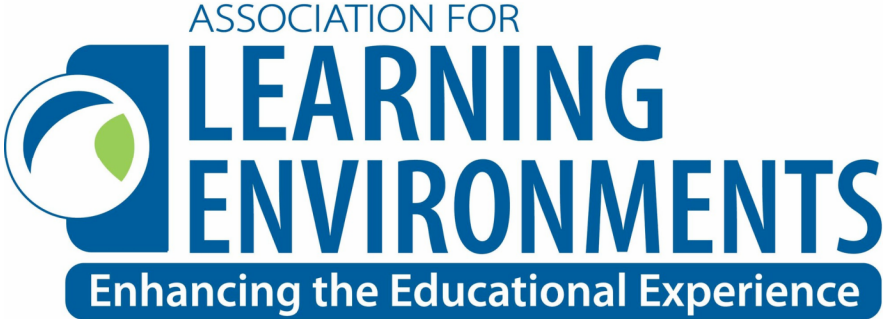
Enhancing the Educational Experience

A4LE Southern CA Chapter

AWARDS OF EXCELLENCE



2026



CAREY UPTON

CHIEF OPERATIONS OFFICER, SANTA MONICA-MLIBU UNIFIED SCHOOL DISTRICT, 3RD YEAR AS A JURY MEMBER

ANNIE AUNG

DIRECTOR OF FACILITIES PLANNING & DEVELOPMENT, DOWNEY UNIFIED SCHOOL DISTRICT, 1ST YEAR AS A JURY MEMBER

BROOKE MURRAY

DIRECTOR OF FACILITIES PLANNING & OPERATIONS, ONTARIO-MONTCLAIR UNIFIED SCHOOL DISTRICT, 1ST YEAR AS A JURY MEMBER

JENAE DECKER

SR. DIRECTOR OF PRE-CONSTRUCTION SERVICES, BERNARDS, 1ST YEAR AS A JURY MEMBER

DAVID WILLIAMS

PROJECT MANAGER, HMC ARCHITECTS, A4LE SECRETARY & TREASURER, FORMER 1ST CHAIR OF PROGRAMS & EVENTS

Lettie Boggs, Past President

Jason Woolley, President

Sara Slater, President Elect

Tonya Giebel, Programs 2nd Chair

Kasey Smith, Membership 2nd Chair

Alex Gordon, Sponsorship 1st Chair

Sam Camacho, Events 1st Chair

Dawn Brisco, Consortium Rep

David Williams, Secretary / Treasurer Chair

Ryan Schissler, Diversity Chair

Julia Hawkinson, Programs 1st Chair

Emily Alessandri, Communications Chair

Lynne Lees, Member At-Large

Scott Hammond, Director at Large

Jeff Johnson, Events 2nd Chair

Khary Knowles, SchoolsNEXT Chair

Dennis Chavez, SchoolsNEXT Chair

**Stephanie Stewart, A4LE SW Region
Director**

TITLE

HEED



**THANK YOU
SPONSORS!**

EVENT



DRINKS



PROCESS & CRITERIA

- **(20) Submissions**
- **(4) Judges blindly scored each project**
- **Took Average Score.**
- **Only knew the District/School and Project Name**
- **5th and 12th highest New Construction Projects separated by (5.25) points.**

<u>Criteria</u>	<u>Points</u>
Cover Page	2
Executive Summary	5
Scope of Work and Budget	3
School & Community Engagement	20
Educational Environment	20
Physical Environment	20
Results of the Process & Project	20
The "Story" presentation	10
TOTAL	100

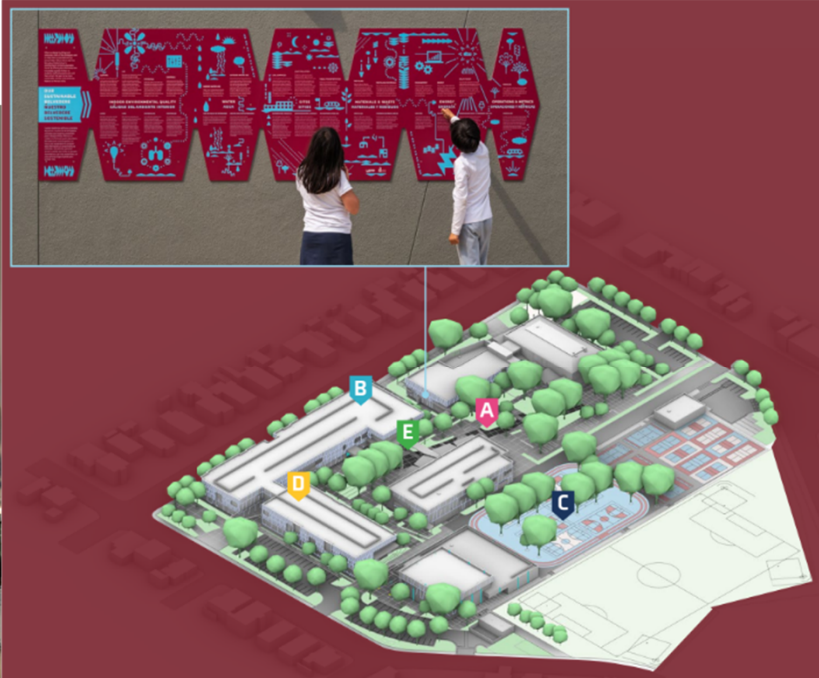
AWARDS

CATEGORIES

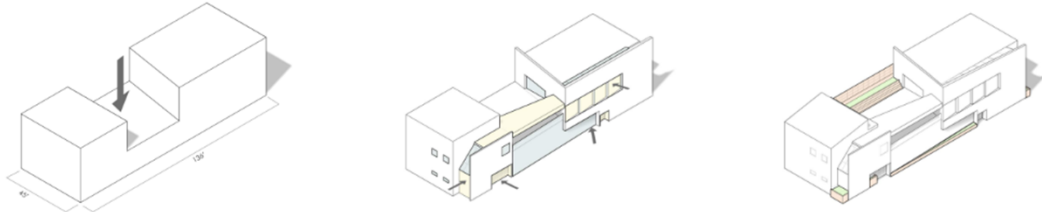
- 1. New Construction**
- 2. Modernization**
- 3. Tight Budget Transformation (Under \$15,000,000)**
- 4. Innovation (Project that is “innovative” in educational delivery in technology, materials, green initiatives, etc.)**
- 5. Alternative Support Environments: (Project can be municipal, K-14, private, or non-profit. The project must illustrate elements that serve students or the local community).**

PROJECTS

NEW CONSTRUCTION: BELVEDERE MIDDLE SCHOOL LOS ANGELES UNIFIED SCHOOL DISTRICT NAC ARCHITECTS



NEW CONSTRUCTION: ALLIANCE BURTON TECH HIGH SCHOOL EXPANSION CHARTER SCHOOL – LOCATED IN SOUTH LOS ANGELES, CA LOC ARCHITECTS



Manipulation of the building mass to provide outdoor space, access, daylight, and landscaping elements



**NEW CONSTRUCTION:
LOS ALAMITOS HIGH SCHOOL NEW GYMNASIUM
LOS ALAMITOS UNIFIED SCHOOL DISTRICT
WESTGROUP DESIGNS**



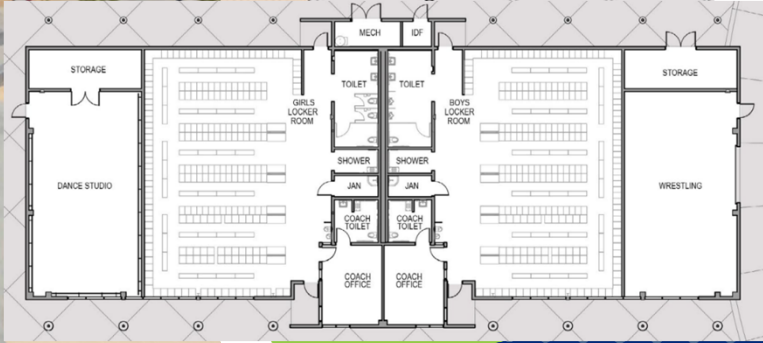
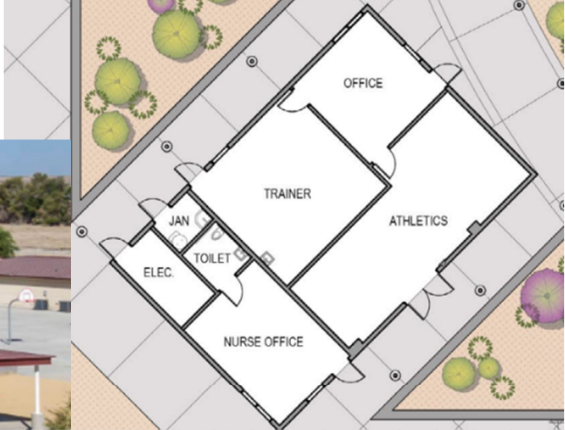
**NEW CONSTRUCTION:
EL SEGUNDO HIGH SCHOOL MUSIC & COMMUNITY BUILDING
EL SEGUNDO UNIFIED SCHOOL DISTRICT
NAC ARCHITECTS**



**NEW CONSTRUCTION:
JOHN W. NORTH HIGH SCHOOL TRANSFORMATION & EDITION
RIVERSIDE UNIFIED SCHOOL DISTRICT
GO ARCHITECTS**



NEW CONSTRUCTION: RIVERSIDE PREP ACADEMY'S LOCKER ROOM & OFFICE BUILDINGS ORO GRANDE SCHOOL DISTRICT SGH ARCHITECTS



NEW CONSTRUCTION: EASTSIDE ELEMENTARY SCHOOL RIVERSIDE UNIFIED SCHOOL DISTRICT PBK ARCHITECTS

“The school will be rooted in the foundations of culture and civic engagement; thereby, instilling pride in the community in which our scholars reside.”
-Dawn Brawley, Principal



**NEW CONSTRUCTION:
PALISADES CHARTER HIGH SCHOOL
LOS ANGELES UNIFIED SCHOOL DISTRICT
DLR GROUP**



NEW CONSTRUCTION: EAST LOS ANGELES OCCUPATIONAL CENTER (ELAOC) LOS ANGELES UNIFIED SCHOOL DISTRICT HPI ARCHITECTURE



NEW CONSTRUCTION: LOS ANGELES HIGH SCHOOL HEALTH & WELLNESS CENTER LOS ANGELES UNIFIED SCHOOL DISTRICT HMC ARCHITECTURE



DEPARTMENT LEGEND
 MEDICAL PUBLIC AREAS
 DENTAL STAFF AREAS
 MENTAL BUILDING SUPPORT

NARROW SITE
The site presents numerous constraints, limiting the available space for the building and visitor parking. As a result, the program carefully stretches to fit within the allowable building area.

SPICE & OFFSET
To maximize the constrained site and create communal spaces, the plan offsets to form sheltered overhangs at the student waiting area and staff lounge. Scaling up the public areas results in a grand entry for both the community and students.

"THE WEDGE"
Inspired by LAHS's history of towers and monolithic, "sharpened" style, a wedge-shaped roof form guides visitors towards the entry while also screening views of the roof equipment.

REVEAL
To further guide wayfinding, the shroud-like roof form lifts to reveal entry points, "pulling back the curtain." The shroud's varying heights emphasize the scale difference between the community and students.

ALTERNATE SUPPORT ENVIRONMENT: INDIO CONFERENCE CENTER RIVERSIDE COUNTY OFFICE OF EDUCATION DLR GROUP



ALTERNATE SUPPORT ENVIRONMENT: MARSHALL EARLY EDUCATION CENTER REBIRTH GARVEY SCHOOL DISTRICT SGH ARCHITECTS



AWARDS

NEW CONSTRUCTION MERIT AWARDS

NEW CONSTRUCTION – MERIT AWARD

STAUFFER MIDDLE SCHOOL TWO STORY CLASSROOM BUILDING

DOWNEY UNIFIED SCHOOL DISTRICT

HUCKABEE



Honoring Mary R. Stauffer!

The prominent display of the Stauffer name on the building has strengthened community connection by **honoring the legacy of Mary Stauffer and reinforcing the school's identity.**

Commitment to Education and Philanthropy

- Founded the Mary R. Stauffer Foundation in the early 1990s
- Personally funded the foundation to give back to the Downey community
- Focused on supporting education and innovative learning

Impact and Legacy

- Foundation has donated more than \$6 million to student awards and programs
- West Middle School renamed Mary R. Stauffer Middle School in 2014

NEW CONSTRUCTION – MERIT AWARD

COMPTON HIGH SCHOOL
COMPTON UNIFIED SCHOOL DISTRICT
DLR GROUP



NEW CONSTRUCTION – MERIT AWARD
CASA BLANCA ELEMENTARY SCHOOL
RIVERSIDE UNIFIED SCHOOL DISTRICT
PBK ARCHITECTS



INNOVATION MERIT AWARD

INNOVATION – MERIT AWARD
LIBERTY HIGH SCHOOL – LEAF ACADEMY
GOLDEN VALLEY UNIFIED SCHOOL DISTRICT
SGH ARCHITECTS



NEW CONSTRUCTION HONOR AWARDS

NEW CONSTRUCTION – HONOR AWARD
CUCAMONGA ELEMENTARY SCHOOL
CUCAMONGA UNIFIED SCHOOL DISTRICT
PBK ARCHITECTS



NEW CONSTRUCTION – HONOR AWARD
MALIBU HIGH SCHOOL
SANTA MONICA-MALIBU UNIFIED SCHOOL DISTRICT
NAC ARCHITECTURE & KONING EIZENBERG ARCHITECTURE



INNOVATION HONOR AWARDS

INNOVATION – HONOR AWARD
CEDARCREEK ELEMENTARY EDIBLE SCHOOL YARD AND FLEX LAB
SAUGUS UNION SCHOOL DISTRICT
SGH ARCHITECTS



ALTERNATIVE SUPPORT ENVIRONMENTS HONOR AWARDS

ALTERNATIVE SUPPORT ENVIRONMENTS – HONOR AWARD
PROFESSIONAL DEVELOPMENT CENTER
MONTEREY COUNTY OFFICE OF EDUCATION
PBK ARCHITECTS



A4LE Southern CA Chapter

AWARDS OF EXCELLENCE

2026

