

CROSSROADS ART AND ATHLETICS FACILITIES

LOC
Architects

Architect: LOC Architects

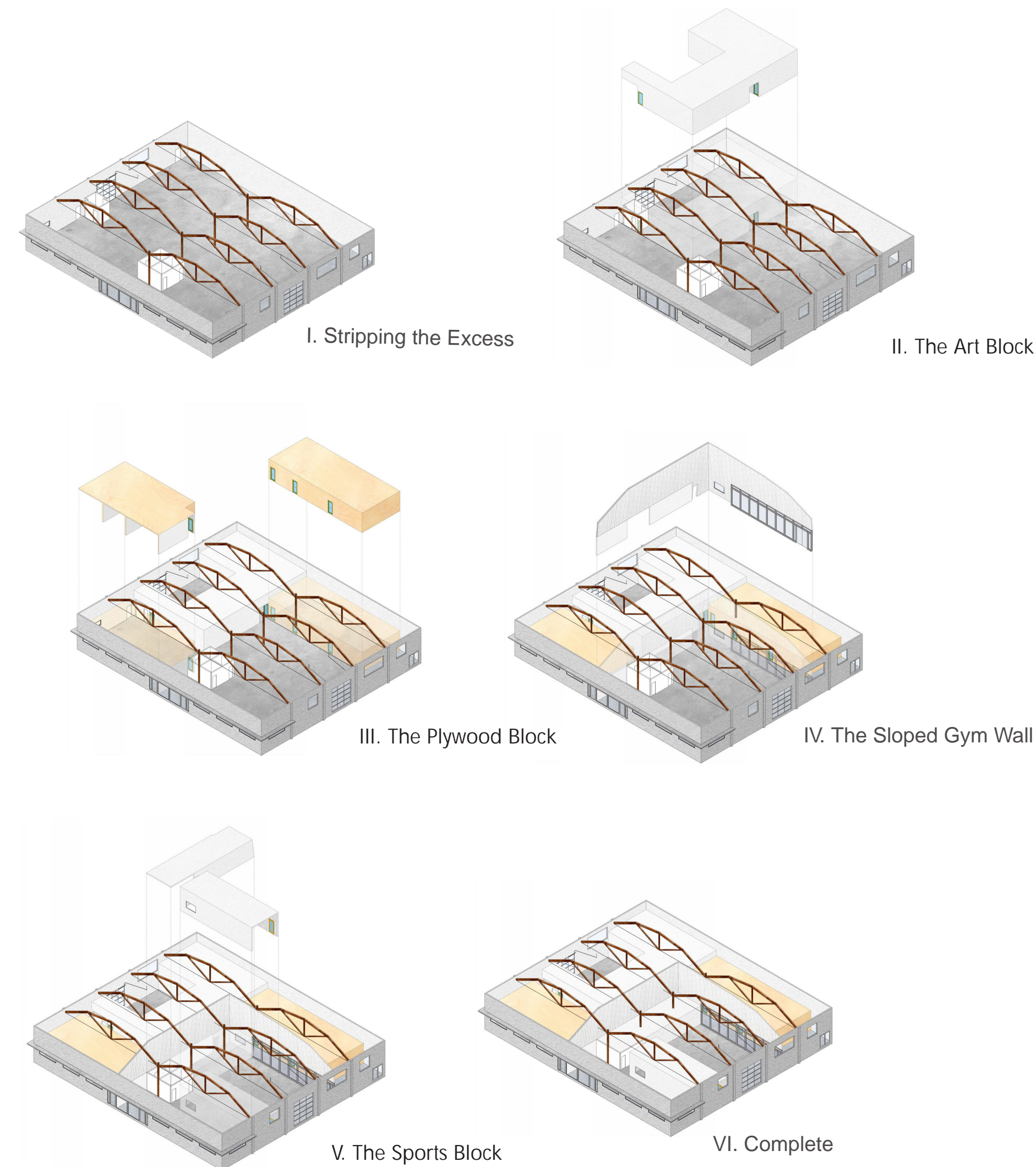
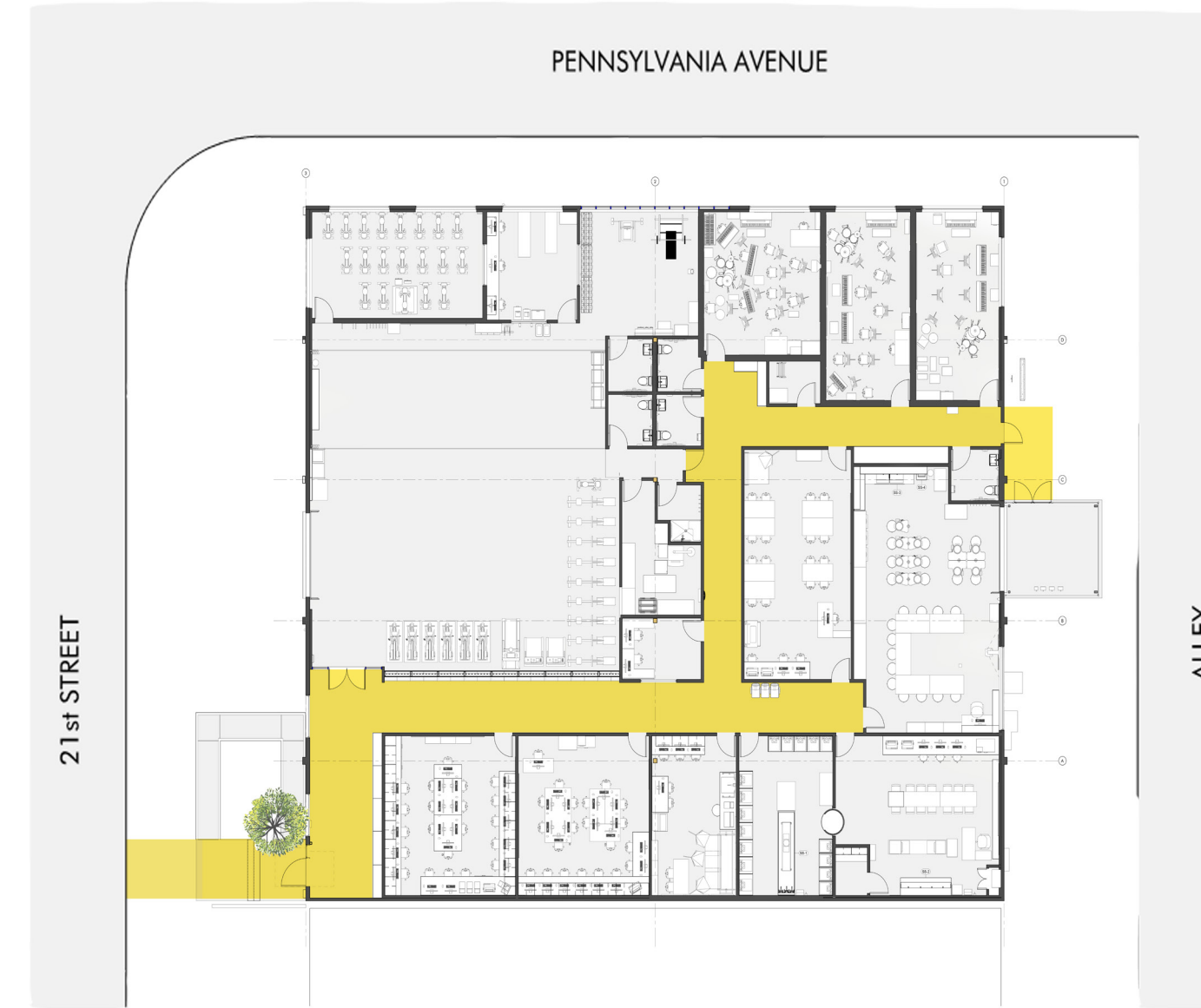
Client: Crossroads School

Location: Santa Monica, CA

General Contractor: Douglass Design Build



An urban landscape inside a former airplane parts storage warehouse accommodates an eclectic series of uses for the Los Angeles area private school Crossroads, while at the same time providing an inspirational series of intervening spaces to enrich the student experience.



Size: 13,000 sf - Construction Cost: \$3 Million



The project aimed to repurpose a warehouse, previously used by an airplane parts distributor, into a dynamic educational space that serves a variety of functions.



The design preserved the building's raw industrial aesthetic while enhancing the interior and exterior to meet the needs of a growing educational institution.



The facility was transformed to house a gymnasium, and multiple art-related classrooms and studios.



Key outcomes include the creation of flexible, collaborative spaces that promote creativity and interaction among students from different disciplines.



The use of materials such as plywood and translucent polygal panels brought warmth to the industrial environment, balancing the building's raw character with functional and welcoming spaces for students.



Natural light was introduced through solar tubes, while a glass garage door further strengthened the indoor/outdoor connection.