

“Learning On Display”

MAGNOLIA SCIENCE ACADEMY 5

LOS ANGELES UNIFIED SCHOOL DISTRICT

EXECUTIVE SUMMARY

A Visionary Transformation:

At the heart of Magnolia Public Schools, a profound transformation is unfolding as Magnolia Science Academy 5 (MSA-5) takes its place in the spotlight. This visionary two-story public charter school is a response to the district's urgent demand for educational space. However, it is not merely an expedient solution to a space crunch; it is an emblem of innovation that defies constraints. Designed with meticulous attention to both budget and timeline, MSA-5 embodies a beacon of academic excellence and a testament to the future of education.

Embracing the Future:

The central pillar of MSA-5's design is the adoption of a STEAM (Science, Technology, Engineering, Arts, and Mathematics) educational model. As students walk through its doors, they step into an environment where learning transcends boundaries. The school is not just a place for education; it is a showcase of an educational approach designed to inspire, innovate, and create future-ready citizens. This progressive model is designed to set new standards in academic excellence and act as a prototype for future learning institutions.

"Learning on Display":

Unique among educational facilities, MSA-5 takes a revolutionary stance by introducing the concept of "Learning on Display." Here, the building becomes a canvas where students' academic achievements are showcased, and learning is not confined within the four walls of a classroom. MSA-5 is not just a school; it's an embodiment of progress in education, nurturing a community of forward-looking learners and inspiring innovation. The school's presence extends far beyond its physical boundaries, reaching out to the community and beyond, setting a benchmark for the educational landscape.





Context & Neighborhood



Site Plan

MAGNOLIA SCIENCE ACADEMY 5

LOS ANGELES UNIFIED SCHOOL DISTRICT

SCOPE OF WORK AND BUDGET

Completion Date: Project in Design
Construction Costs: \$40,000,000
Building Area: 46,000 SF
Site Area: 1.9 Acres
Enrollment Capacity: 560 Students 7-12 grades

CONTEXT

Positioned on a challenging corner of an existing retail lot, MSA-5’s design embodies a triumph of an integrated approach. Overcoming multiple hurdles, it ingeniously delivers a future-ready facility, all within the constraints of a conservative budget. It boldly confronts site limitations, ensuring safety, and addressing the demand for on-site amenities. This visionary facility is poised to expand in phases, accommodating 560 students, providing the community with unmatched access to progressive education and standing as a paragon of efficient and innovative design.

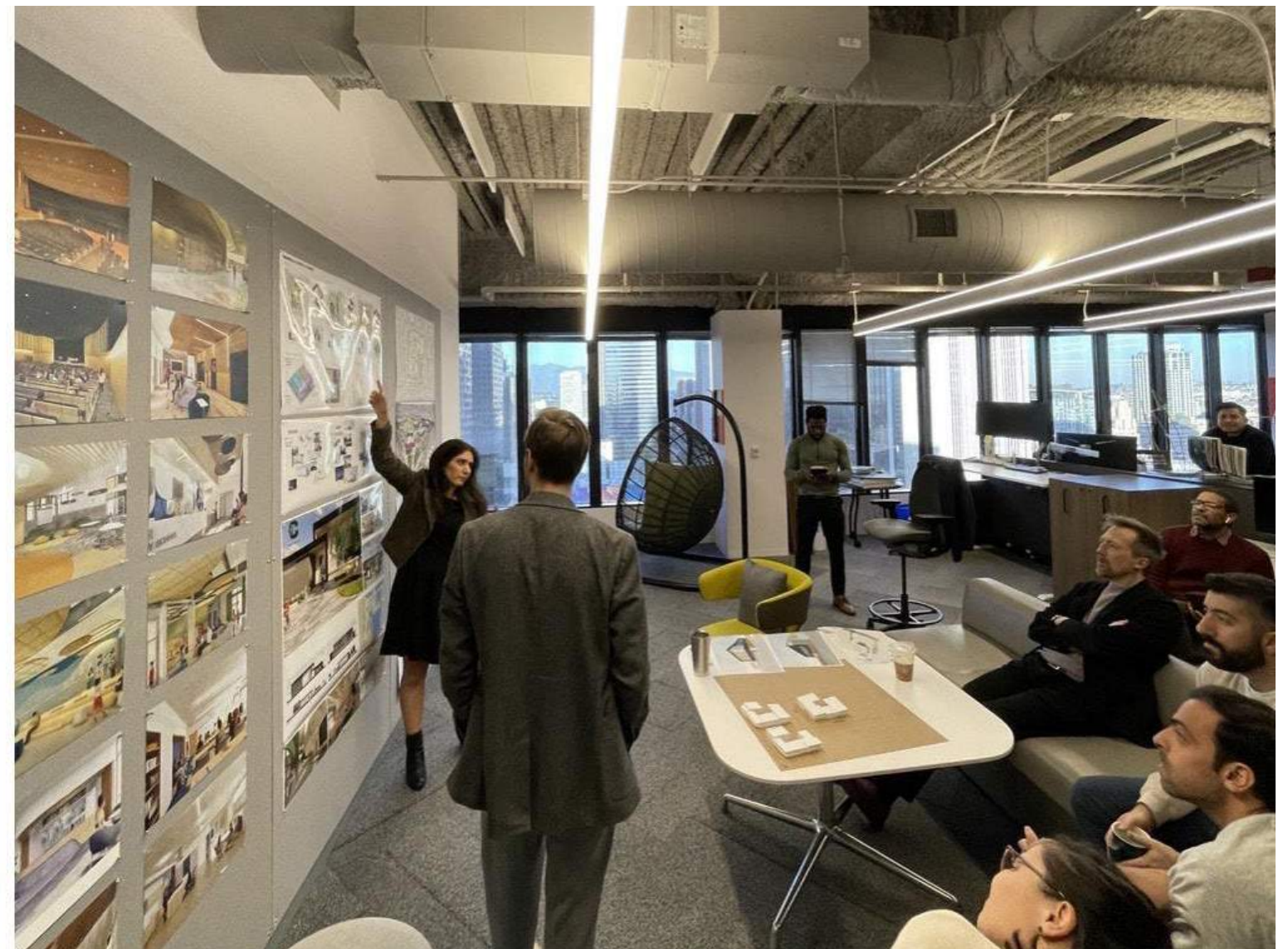
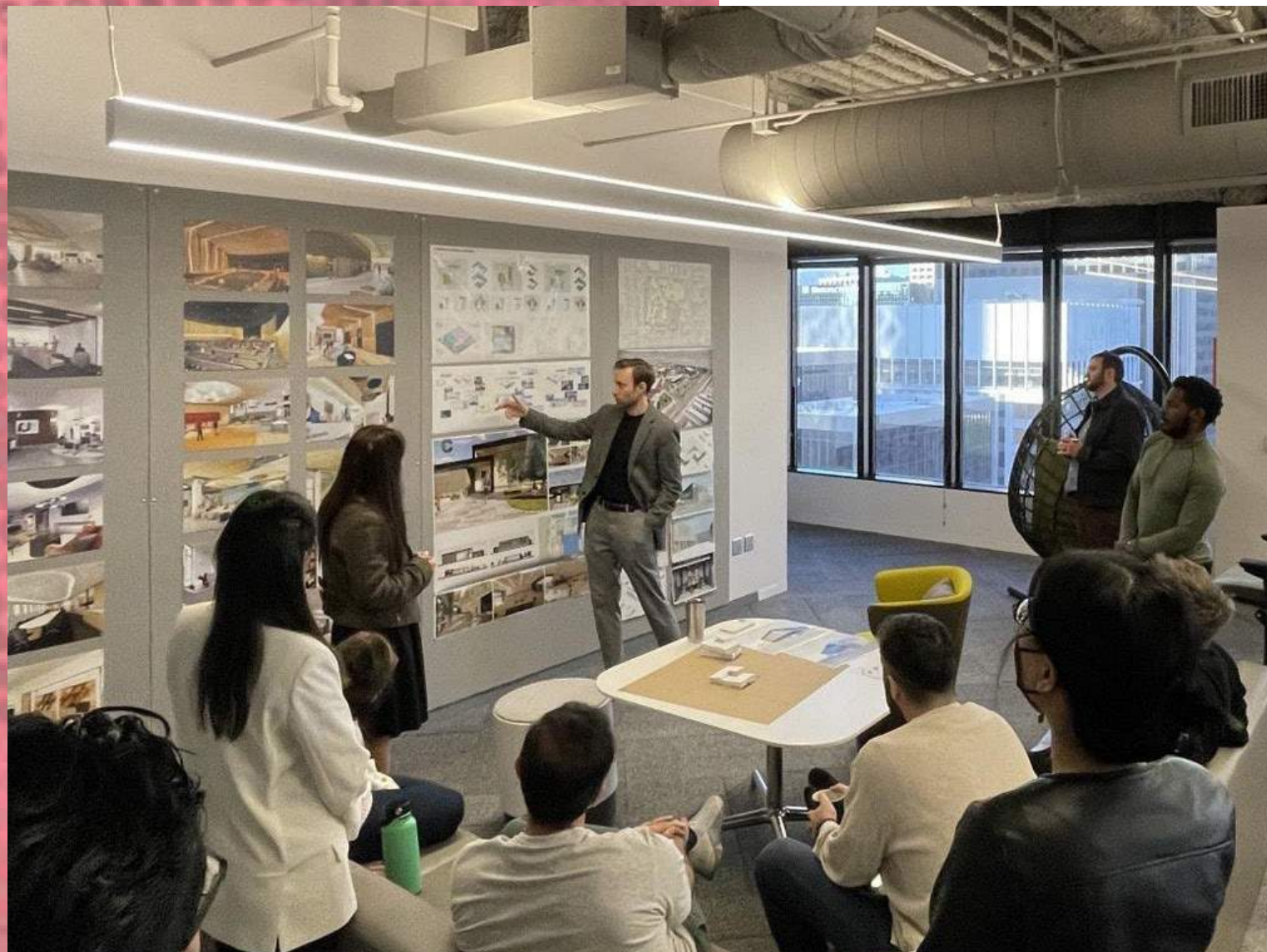
SCHOOL AND COMMUNITY ENGAGEMENT



Nestled within a vibrant mixed-use community, MSA-5 is an embodiment of progressive education. A diverse range of stakeholders, from Magnolia Public Schools to students, parents, teachers, converge in collaborative spirit. The design journey was not devoid of challenges, especially given the site's limitations. However, through an integrated, future-focused design approach, MSA-5 has emerged as a testimony to harmonious coexistence with the community, drawing inspiration from its surroundings, and establishing a unique and inspiring atmosphere.

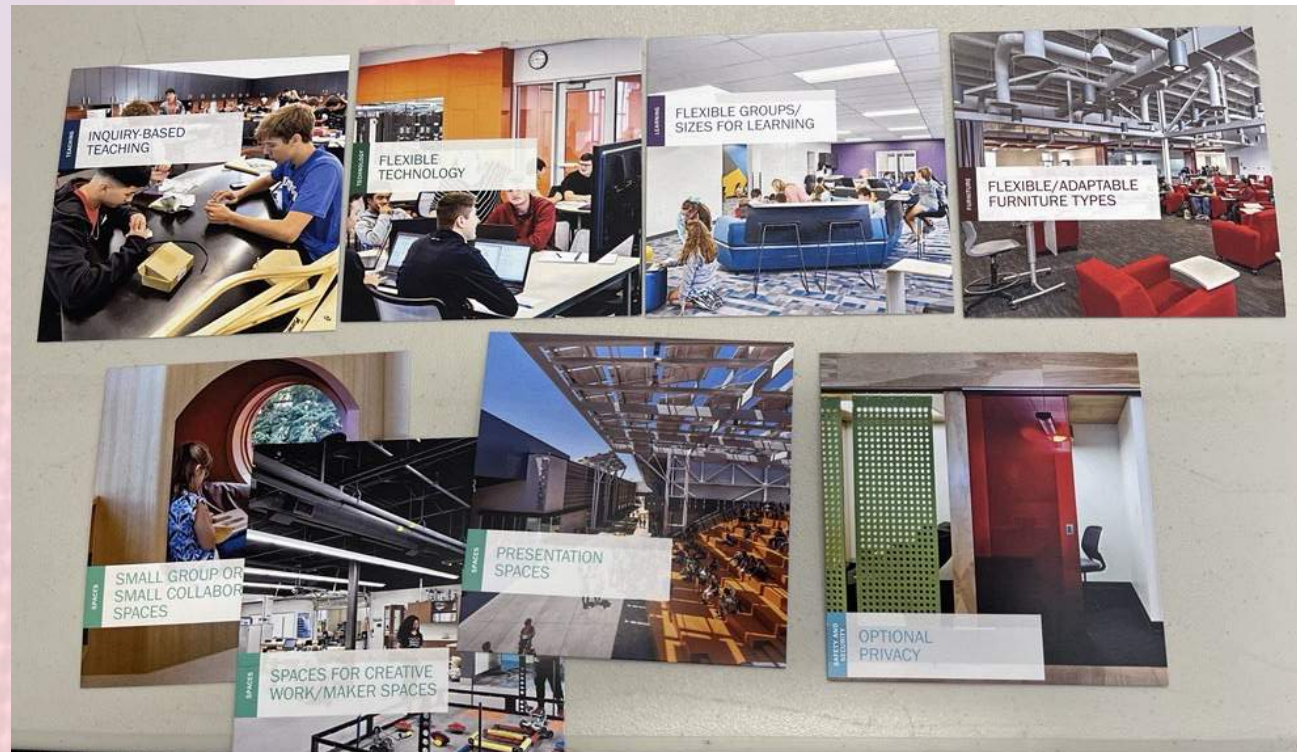


Pin-ups and design critiques are an integral part of our design process, and when it came to working on Magnolia SA5, it was no exception. We harnessed our in-house expertise to meticulously refine ideas and bring about positive enhancements at every stage of development. Given the uniqueness of the site, a departure from the conventional school settings, we sought the collective wisdom of our mixed-use experts. Their insights played a pivotal role in shaping the street presence, ensuring that it's not just functional but also deeply inspiring, and in crafting a pedestrian connection that truly stands out.

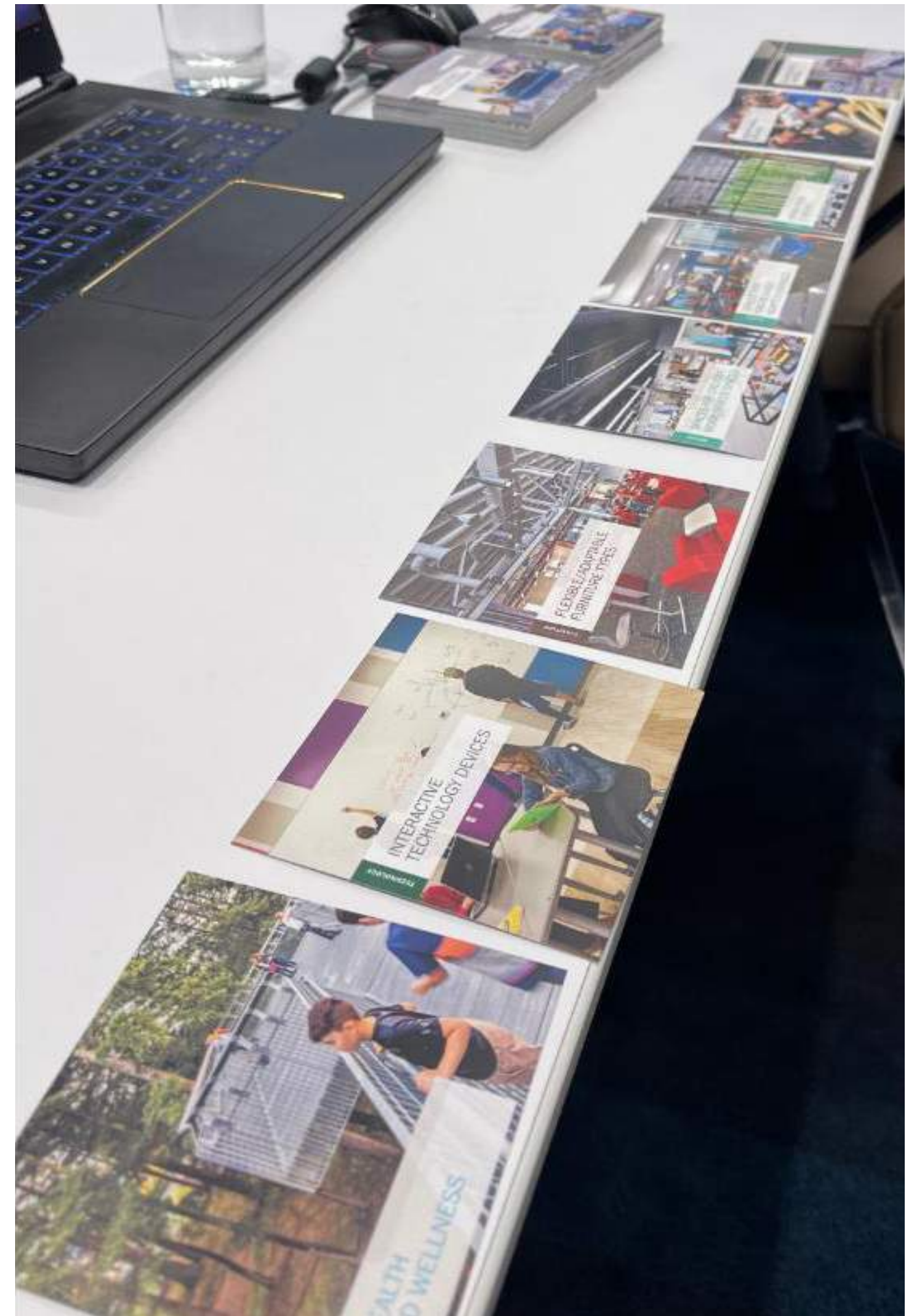


MAGNOLIA SCIENCE ACADEMY 5

LOS ANGELES UNIFIED SCHOOL DISTRICT



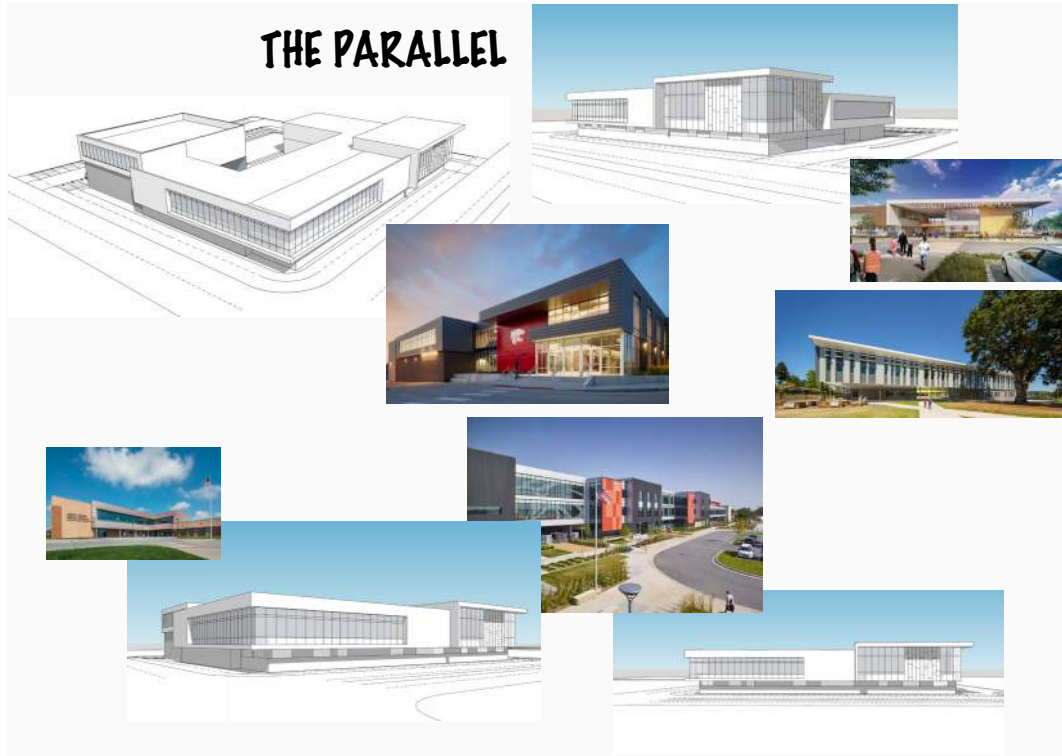
The pinnacle of our stakeholder engagement session was the immersive Learning Connections exercise, a series of activities expertly guided by our educational designers. This exercise masterfully unveils and dissects the educational vision and goals held by the entire group.



MAGNOLIA SCIENCE ACADEMY 5

LOS ANGELES UNIFIED SCHOOL DISTRICT

THE PARALLEL



THE FLOAT

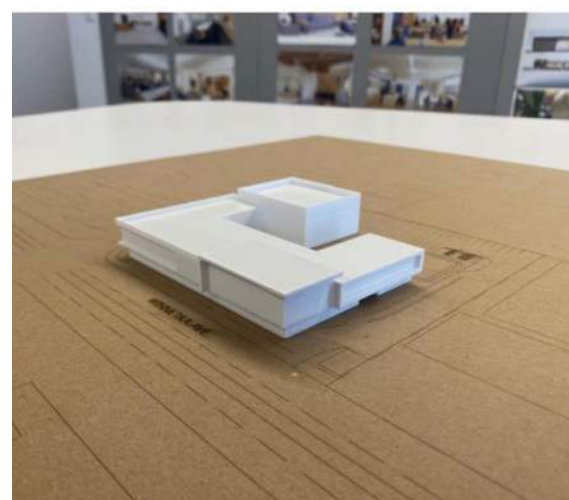
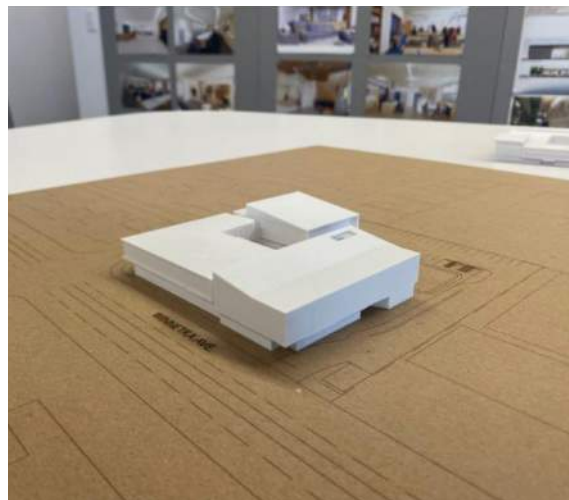
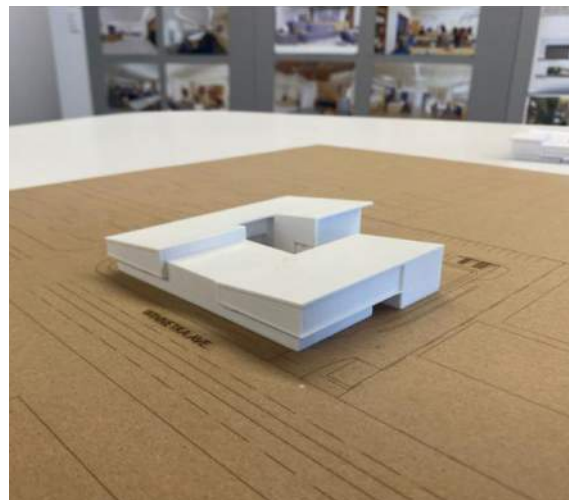


THE CARVE



NEEDS + RESTRICTIONS

- 1- SMALL SITE + LARGE PROGRAMMATIC NEED
- 2- EMPHASIS ON SAFETY
- 3- CONSERVATIVE BUDGET
- 4- DESIRE TO BE A SHOWCASE SCHOOL FOR CLIENT
- 5- DESIRE TO HAVE LARGE COMMUNITY PRESENCE
- 6- NEED FOR ON SITE PARKING + DROP-OFF



EDUCATIONAL ENVIRONMENT

LEARNING ON DISPLAY

Learning on Display stood as our primary and foundational concept. The client's vision for this building was crystal clear – it had to be the embodiment of their progressive educational aspirations. We were unwavering in our commitment to infuse this concept not only into the building's outward appearance but also into its interior spaces.

The pivotal element was the seamless connection bridging the classrooms, the learning corridor, and the courtyard, all meticulously designed to align with our concept. We aimed to inspire students, offering them a unique opportunity to visually immerse themselves in the learning process, even if they were not directly involved in a particular course. We harnessed every available opportunity to reinforce the passive learning aspect of education, ensuring that it was an ever-present, intrinsic part of the facility's design.

ENVIRONMENT THAT SUPPORTS MULTIPLE LEARNING MODALITIES

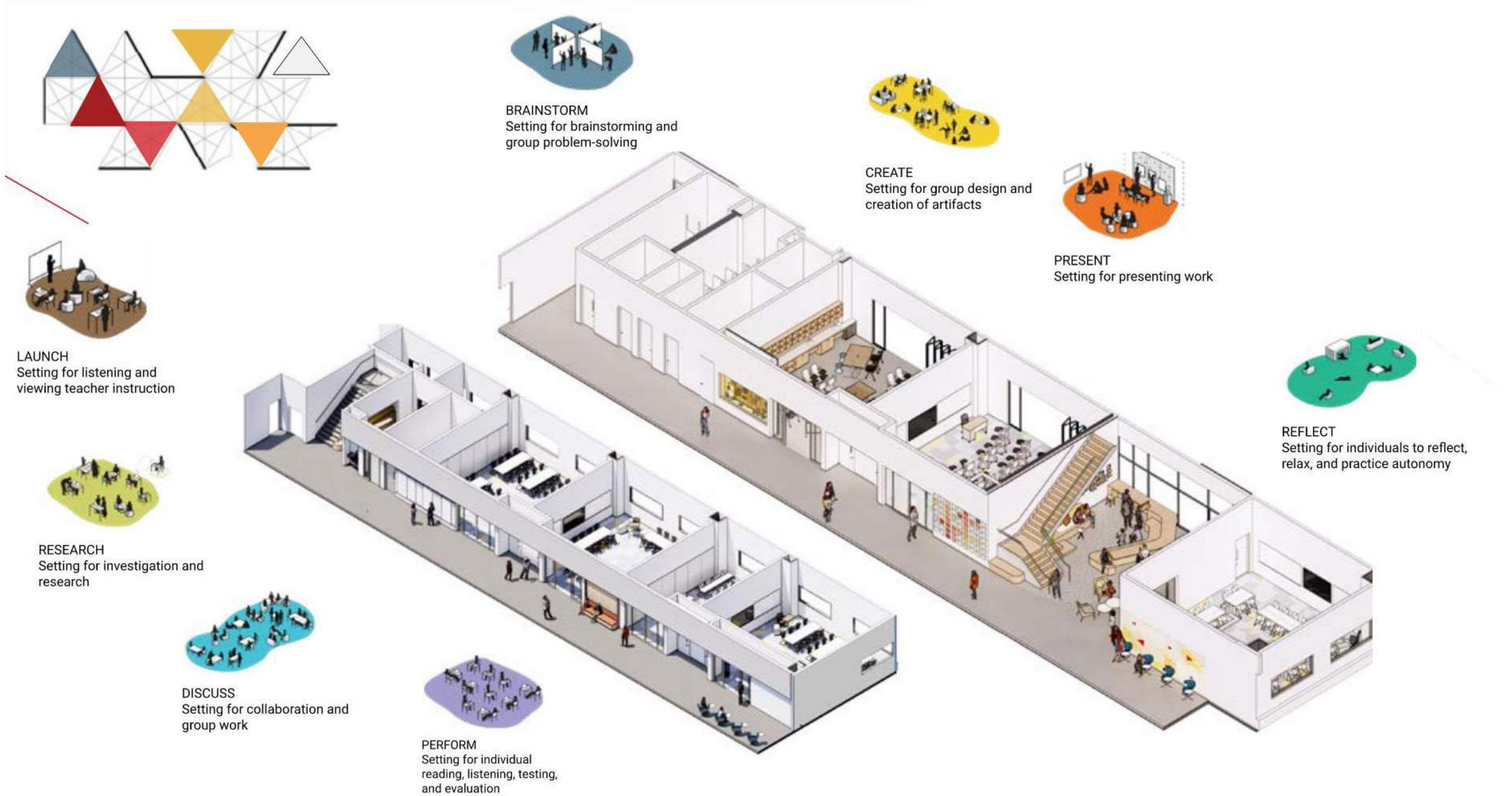
Considering the site's inherent physical constraints, it was imperative that our building displayed exceptional flexibility. Moreover, the potential for changes in grade levels over the years further heightened the need for adaptable spaces. As K12 design specialists, we hold a profound awareness of our role in shaping the learning environments for generations of students in the coming decades, even spanning the next 20, 50, or even 100 years. Thus, our commitment extended beyond the immediate needs, ensuring that our designs were not only relevant but enduring, standing the test of time and serving generations yet to come.

WELL CONNECTED AND TRANSPARENT SPACES

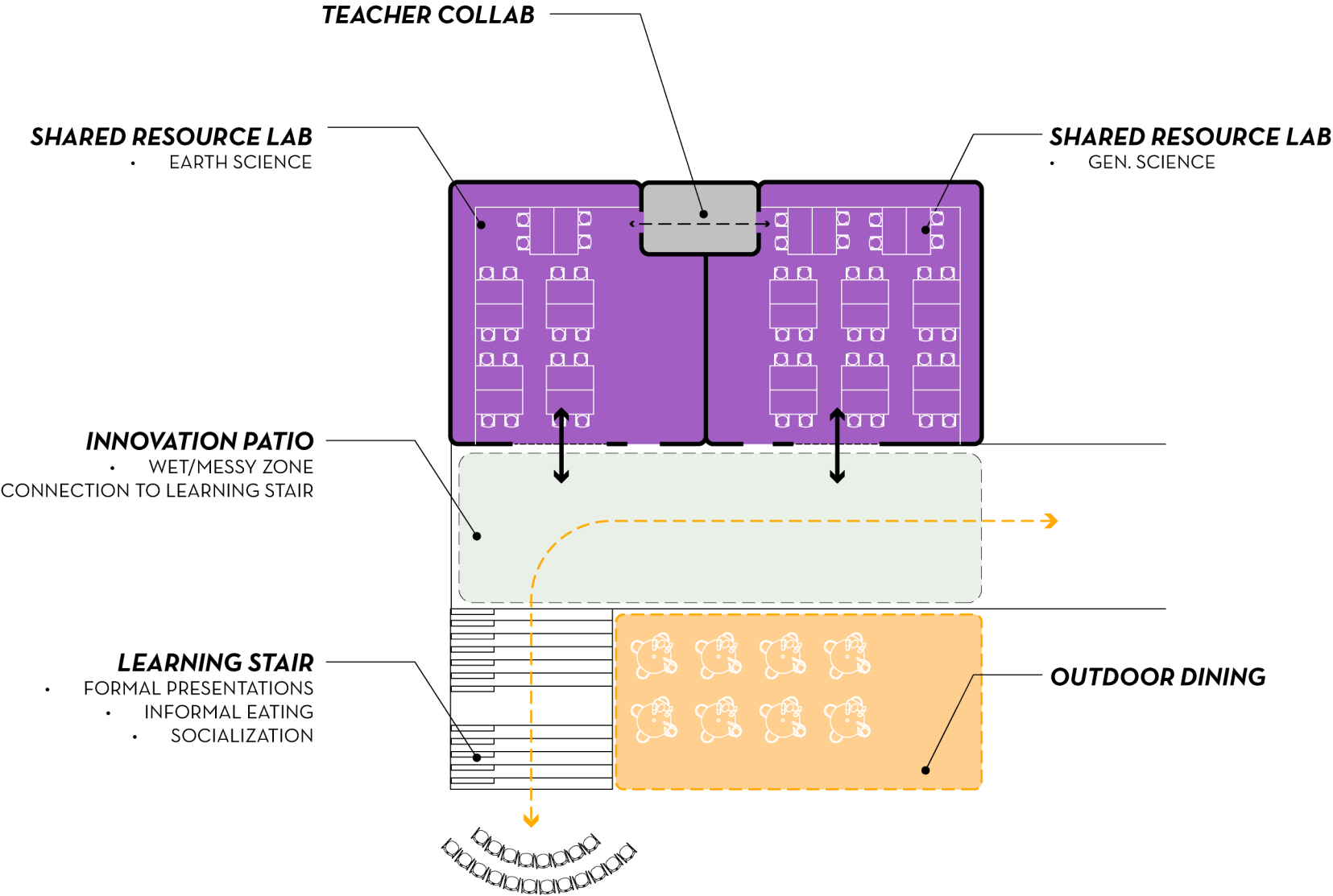
Daylight and expansive views play a pivotal role in ensuring the well-being of our students. Establishing a strong visual connection, making students feel integral to a larger community, is equally essential for nurturing the bonds between educators and learners. Moreover, transparency is a cornerstone of safety and passive supervision within the educational spaces. With a deep understanding of these critical elements, our design strives to craft an environment that is exceptionally transparent and seamlessly interconnected.

LEARNING ON DISPLAY -

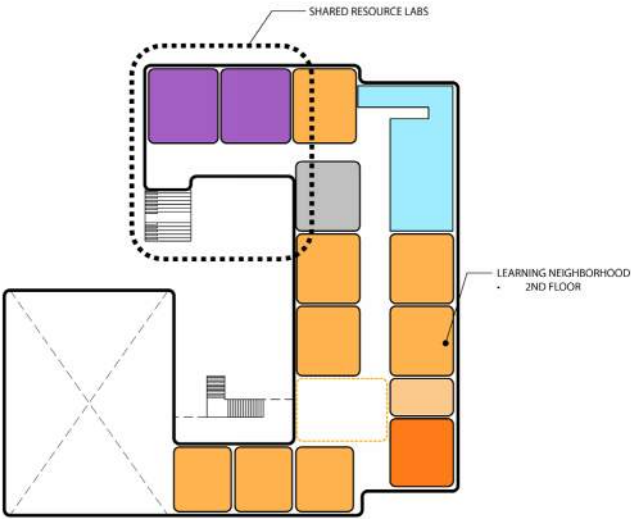
View of our learning corridors and the thoughtfully designed spaces that breathe life into the circulation areas, transforming them into engaging, inviting destinations.

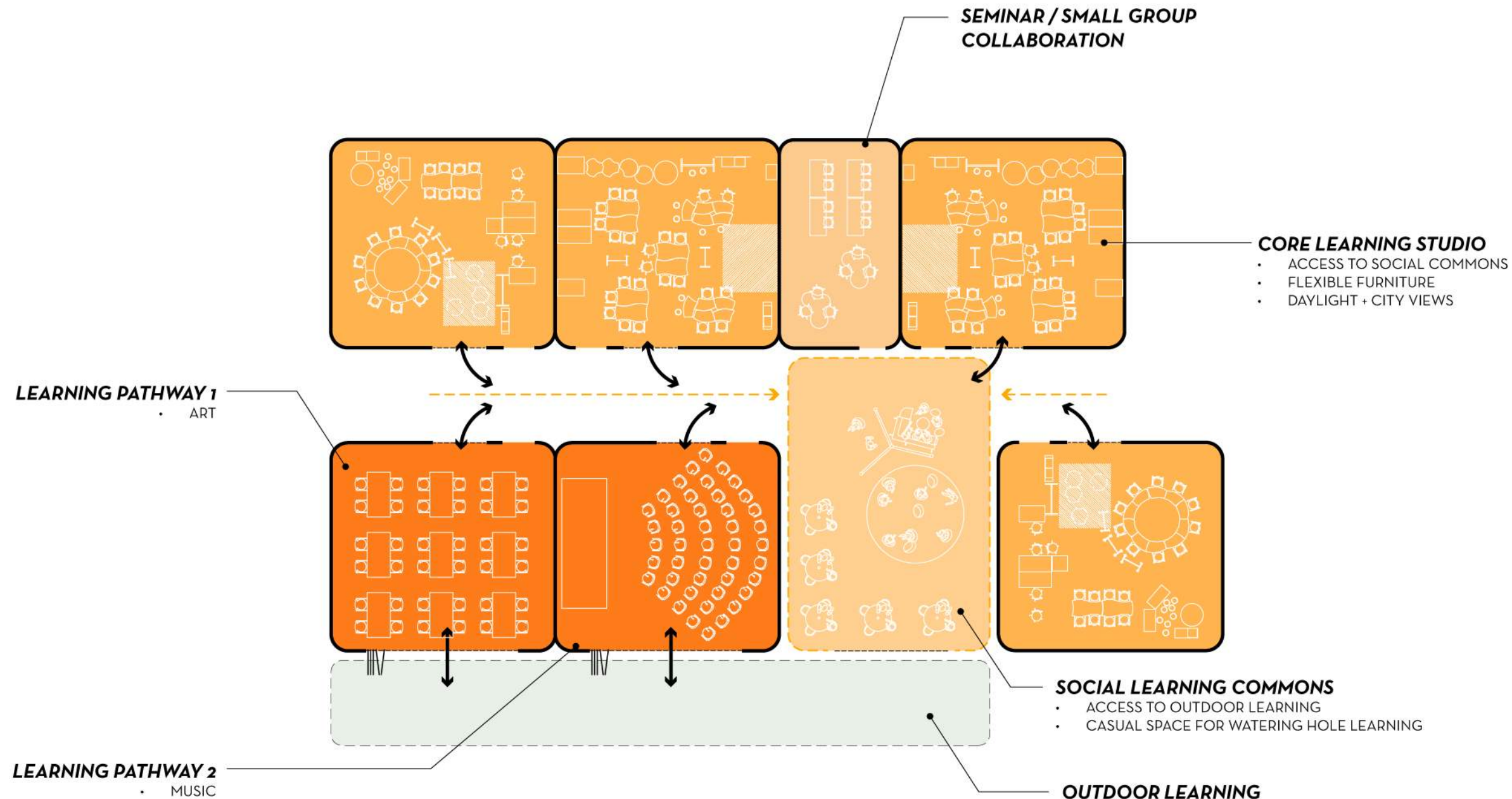


MAGNOLIA SCIENCE ACADEMY 5
LOS ANGELES UNIFIED SCHOOL DISTRICT

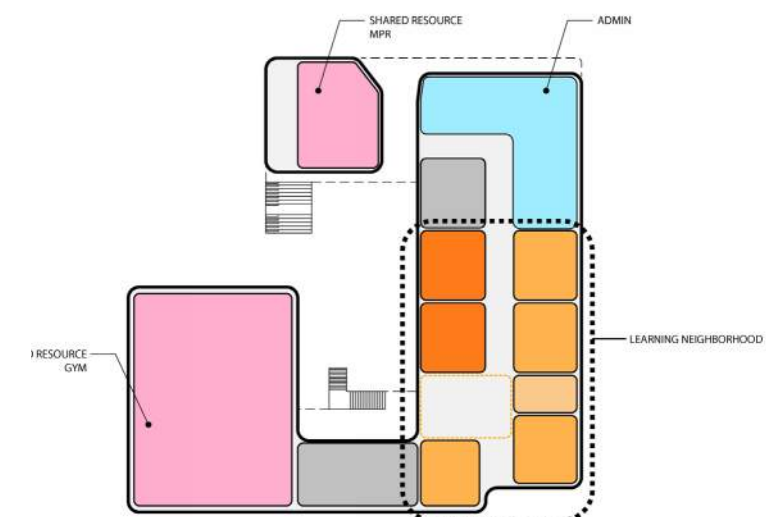


“Learning on Display” and the creation of transparent, interconnected spaces extend even to the micro-level of MSA-5’s design. This dedication to fostering seamless connections within learning spaces and their natural transition to the outdoors is evident even on this intricate scale.





The Social Learning Commons stands at the very heart of the school, serving as the focal point of MSA-5. Every learning studio seamlessly connects to this two-story space, cultivating a vibrant atmosphere where social and emotional connections among learners are nurtured and fortified. The learning corridors gracefully guide students to this central destination, bathed in abundant natural light and seamlessly connected to the outdoors, making it the coveted gathering place for all. Drawing inspiration from the principles of biophilic design, many of the materials and formal elements are thoughtfully crafted, recognizing that nature's calming influence serves as the perfect backdrop for the diverse activities that students enthusiastically partake in.



MAGNOLIA SCIENCE ACADEMY 5
LOS ANGELES UNIFIED SCHOOL DISTRICT

PHYSICAL ENVIRONMENT

LAYERING



KIT-OF-PARTS



EVOLVING

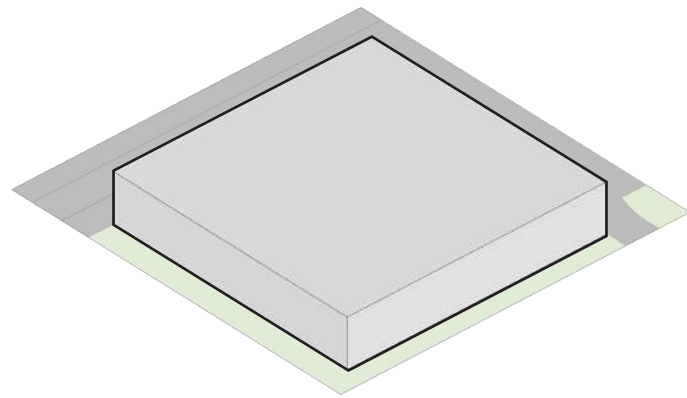


DYNAMIC



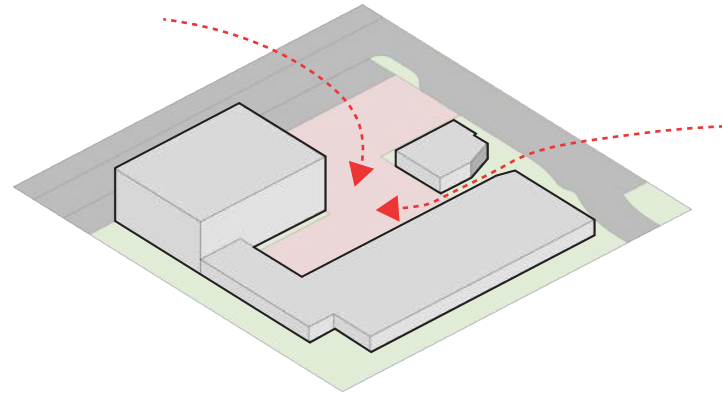
MSA-5's physical attributes signify the architecture of the future. It showcases a two-story structure crowned by an angular metal screen, a striking blend of shading and signage, delivering an unequivocal message to the community: this is a beacon of progress. The design seamlessly integrates with its surroundings, drawing inspiration from the community to create a unique and inspiring atmosphere. Sustainability and high-performance features have been seamlessly woven into the design, creating a future-ready and eco-friendly learning environment that will withstand the test of time.

SHAPING THE DESIGN



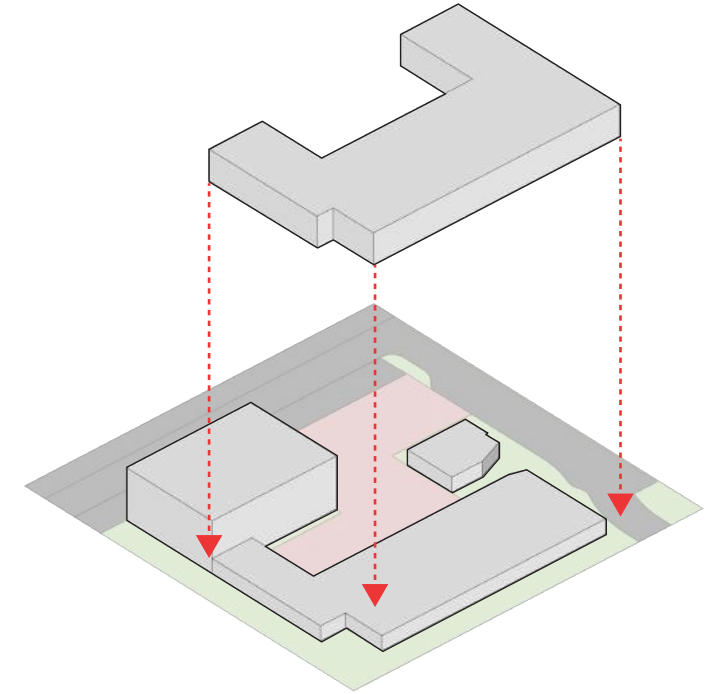
MASS

SITE + BLOCK



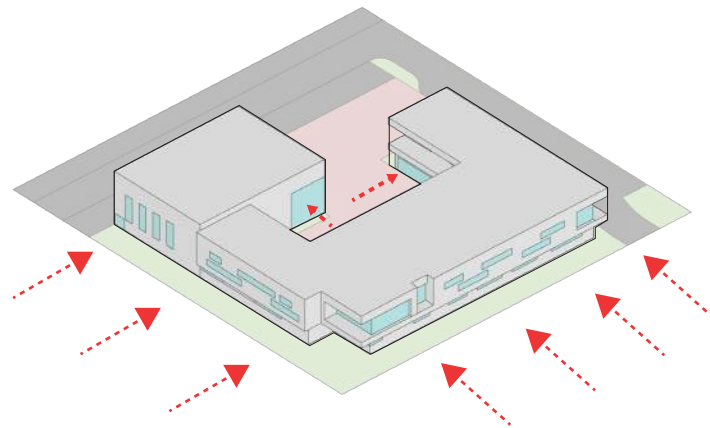
CARVE

CREATION OF OUTDOOR SPACES



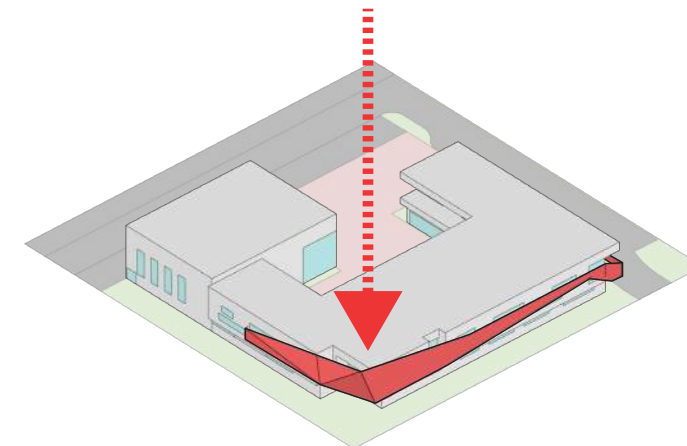
ADD

ADDITION OF UPPER LEVEL



SUBTRACT

PUNCH OPENINGS + SCULPT BLDG

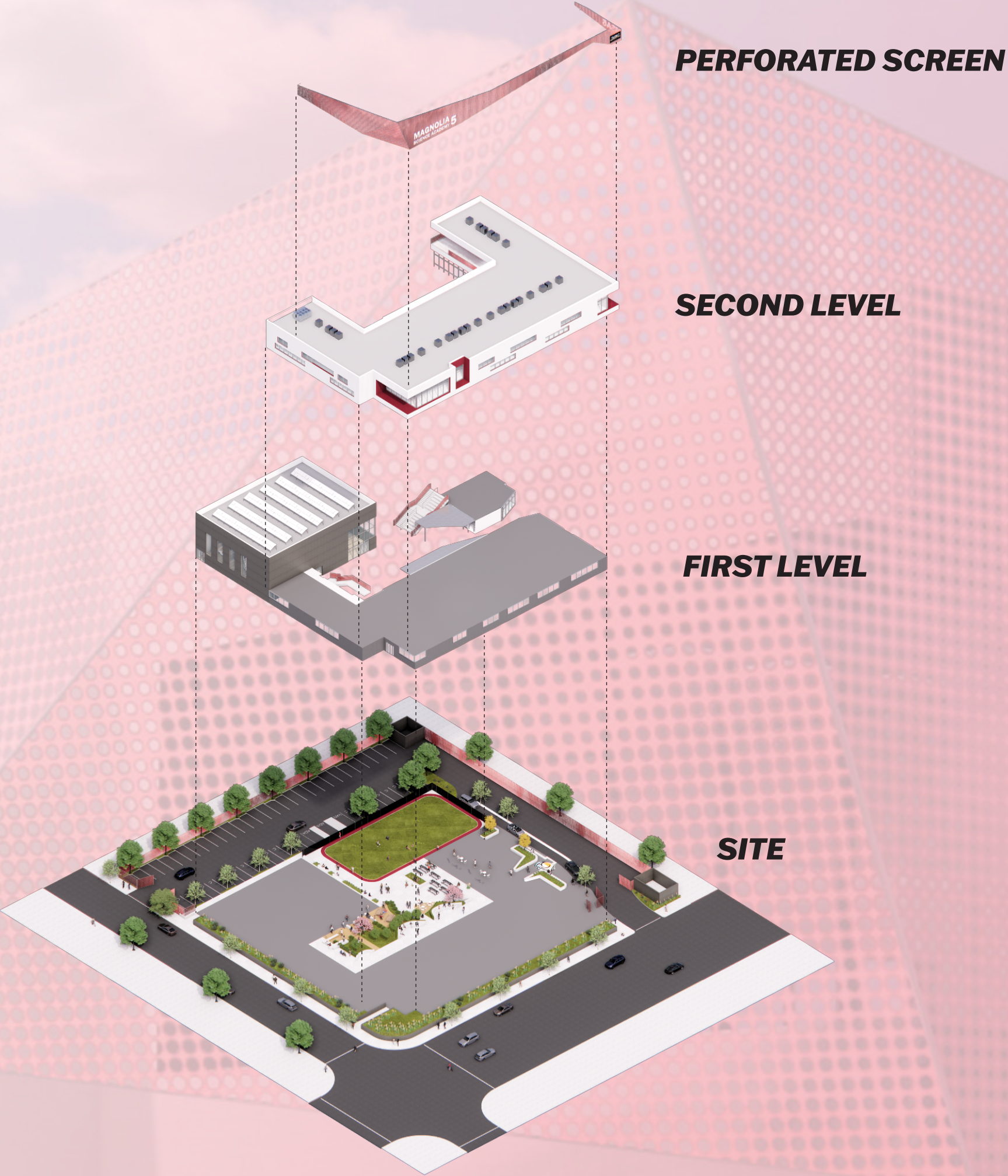


COVER

ADDITION OF SCREEN

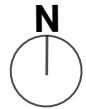
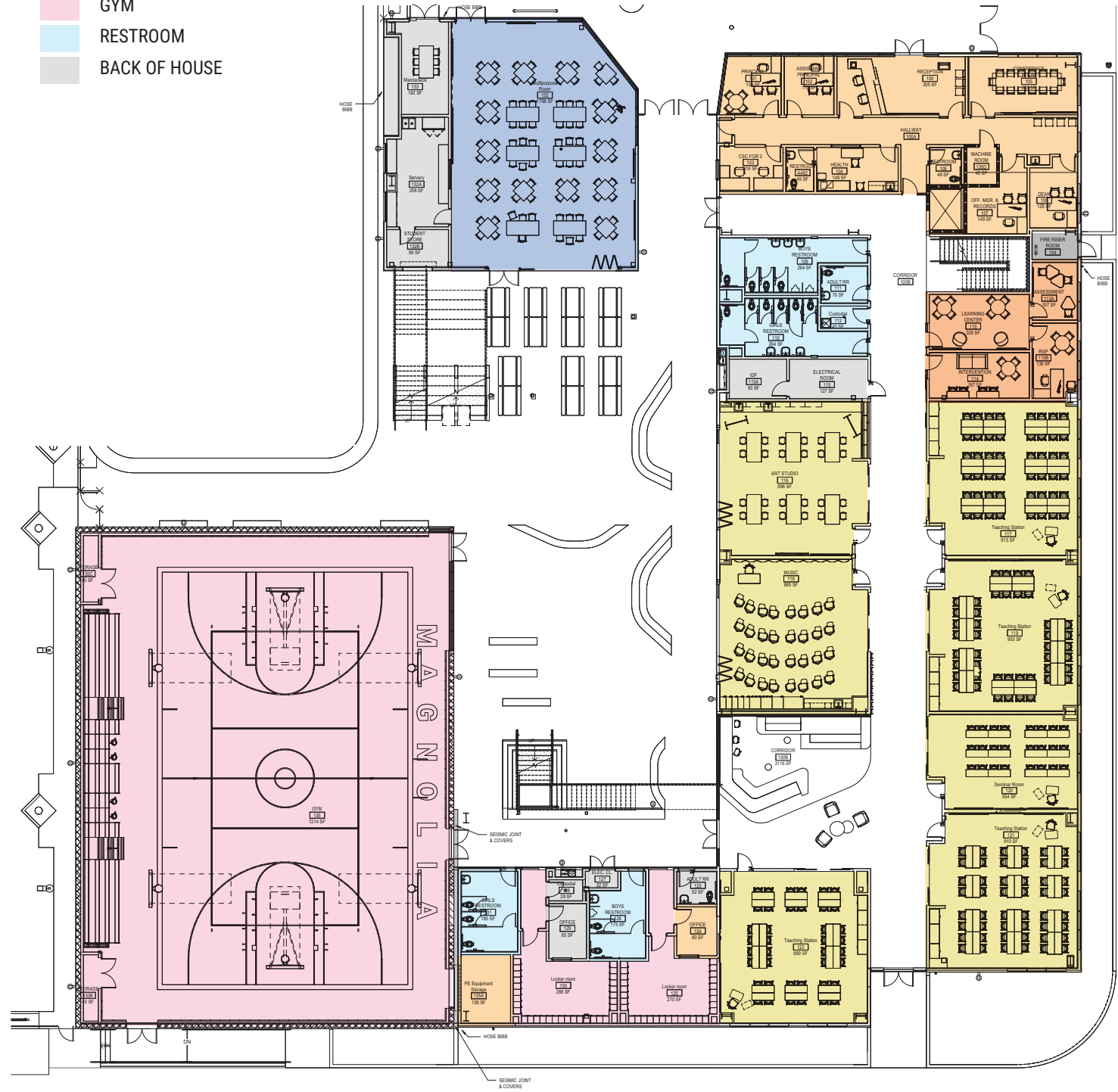
MAGNOLIA SCIENCE ACADEMY 5
LOS ANGELES UNIFIED SCHOOL DISTRICT

The components that comprise this remarkable structure embody simplicity and sophistication. The building fulfills a vital role as the secure boundary of the campus, cradling a sheltered outdoor courtyard where the magic of outdoor learning and physical education unfolds. It seamlessly integrates function and aesthetics, ensuring that every aspect of the design serves the greater purpose of a progressive, vibrant educational environment.



BUILDING THE PLANS

- CLASSROOM
- LEARNING CENTER
- MPR
- ADMIN
- GYM
- RESTROOM
- BACK OF HOUSE



MAGNOLIA SCIENCE ACADEMY 5

LOS ANGELES UNIFIED SCHOOL DISTRICT

OUTDOOR LEARNING



Emphasizing outdoor learning was pivotal to the curriculum, and the constrained site only added to the challenge. The design team felt an even greater responsibility to ensure that every activity and space essential for outdoor learning was thoughtfully accommodated. Extensive studies were conducted to strike the perfect balance between the courtyard's size and the buildings, ultimately creating a harmonious and inviting space where neither the buildings nor the open area dominated. The client's vision included provisions for individual study zones, intimate group activities, and grand collective gatherings. The gathering and learning steps, serving as the anchors of the outdoor learning experience, were meticulously designed to facilitate significant school events and performances.





Outdoor Athletic Field

Gathering and
Learning Steps

Learning Central
courtyard

Art and Music
Classrooms with
Direct access to the
outdoor learning

Transparant
and Activated
Learning
Corridors

Views and Daylight
for all the
Learning spaces

MAGNOLIA SCIENCE ACADEMY 5
LOS ANGELES UNIFIED SCHOOL DISTRICT



Views and Daylight
for all the
Learning spaces

Transparent
and Activated
Learning
Corridors

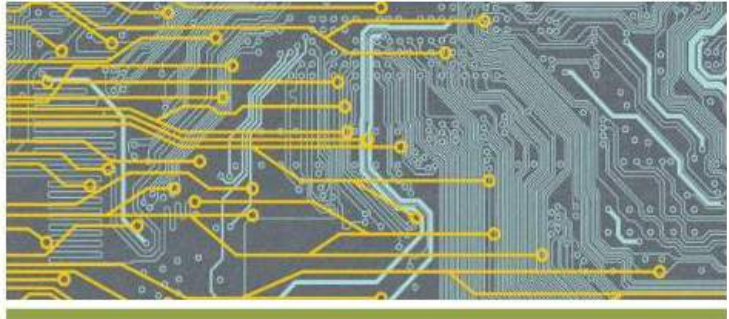
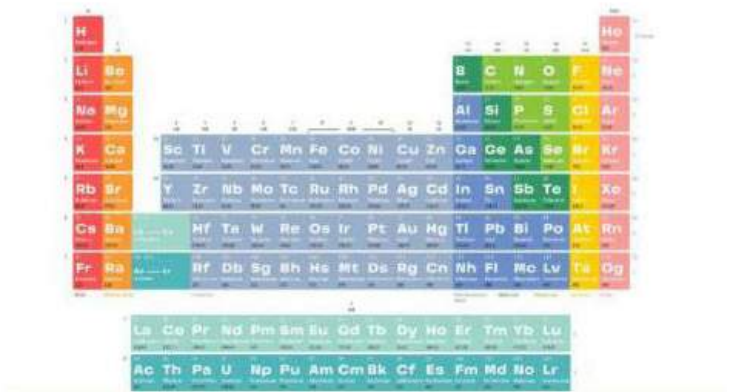
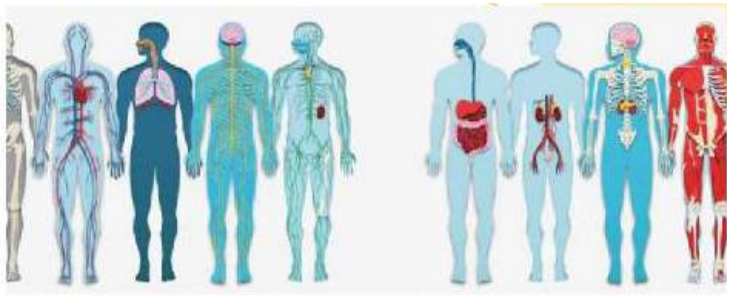
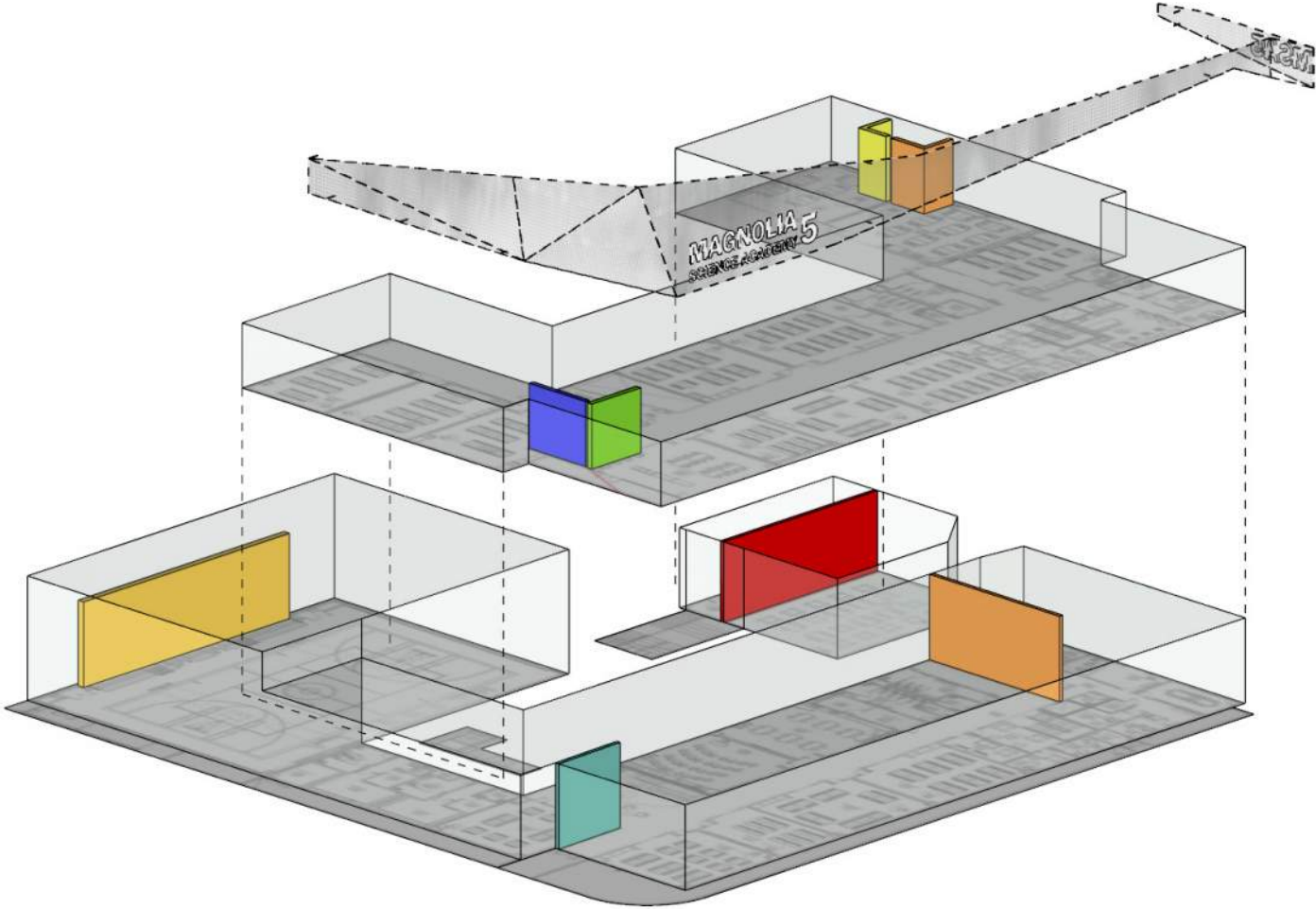
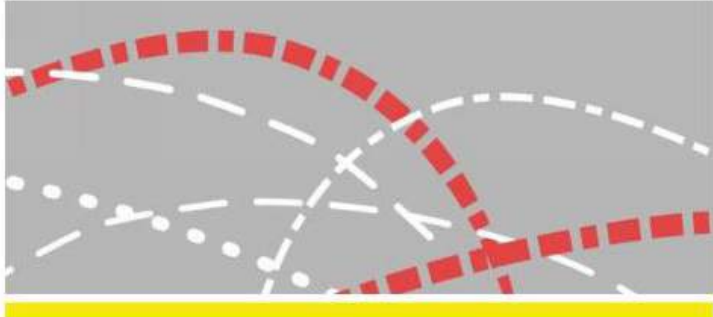
Art and Music
Classrooms with
Direct access to the
outdoor learning

Learning Central
courtyard and Mural

Gymnasium



The Social Learning Commons and the view of the Learning Corridor



ESTABLISHING THE IDENTITY

Effective wayfinding and the creation of distinct spatial identities played a pivotal role in our interior design approach. One of the key strategies employed to accomplish this was the integration of murals and wall graphics. These elements served as more than just decorative additions; they became powerful tools for instilling a sense of ownership and pride within the various spaces.

OUTCOME

MSA-5 stands as a resounding achievement, uniting educational, district, and community aspirations through its forward-looking, collaborative, and integrated design approach. Beyond being just a school, it is a symbol of the future of education. MSA-5 is poised to be a source of community pride and a catalyst for innovative, future-ready education, setting an example of how integrated design can transform a vision into an architectural icon. This transformative project transcends traditional boundaries, nurturing a culture of collaboration, curiosity, and progress, setting the bar for the future of educational design and signaling the dawn of a new era.

Wellcoming and Safe Entry



MAGNOLIA SCIENCE ACADEMY 5
LOS ANGELES UNIFIED SCHOOL DISTRICT



Gymnasium



Robotics and Computer Science Lab



Learning and Gathering Steps

MAGNOLIA SCIENCE ACADEMY 5
LOS ANGELES UNIFIED SCHOOL DISTRICT

