

BILL LIBBON ELEMENTARY SCHOOL

SANTA MARIA-BONITA SCHOOL DISTRICT



A4LE SOUTHERN CALIFORNIA CHAPTER
2021 AWARD OF EXCELLENCE

EXECUTIVE SUMMARY

Following the Santa Maria-Bonita School District's (SMBSD) initiative to develop flexible and forward-looking Education Specifications for TK-6 elementary school design, supporting students in reaching their highest potential and succeed as citizens, Bill Libbon Elementary School is the first new TK-6 elementary school to carry this vision forward.

The 56,890 SF school houses 750-900 TK-6 students on a 10-acre site with joint use acreage; an adjoining city park contains the historic Enos house that students can visit. The triangular site configuration accommodates three separate drop-off loops: one for kindergarten buses, one for elementary student buses, and one for parent vehicle drop-off, making for ideal traffic flow and high security.



Site Diagram:
Understanding the Neighborhood

EXECUTIVE SUMMARY

Known for its winery culture and as the home of historical Californian architecture, Santa Maria-Bonita Unified District stated that one of their main design goals was to embrace and celebrate the community’s identity and respect the surrounding architecture, while providing a modern physical environment to support future-ready learning and accommodate anticipated enrollment growth.

The design outcome pioneers Santa Maria-Bonita School District’s updated educational specifications. In organizing the learning studios around a shared Learning Commons, multiple modes of learning and facilitating learning are supported. In shaping the buildings around safe outdoor learning zones, new opportunities for learning, especially project-based learning, are created. Access to and collaboration between teachers are not only possible but encouraged. SMBSD has been very excited to open their very first school of its kind and plans to integrate innovative curriculum to match the unprecedented architectural design.

The design also achieves their aesthetic goals. The roof slopes correspond to the simple shed roofs of the local winery agriculture. The massing seamlessly integrates with the scale of the neighboring commercial and multifamily residential development. The use of corrugated panels, wood-look fiber cement panels, and plaster recall the materiality of the central California coast area.

Total Construction Budget: \$42.4 Million.



HISTORICAL ARCHITECTURE



WINERY ARCHITECTURE



MODERN ARCHITECTURE

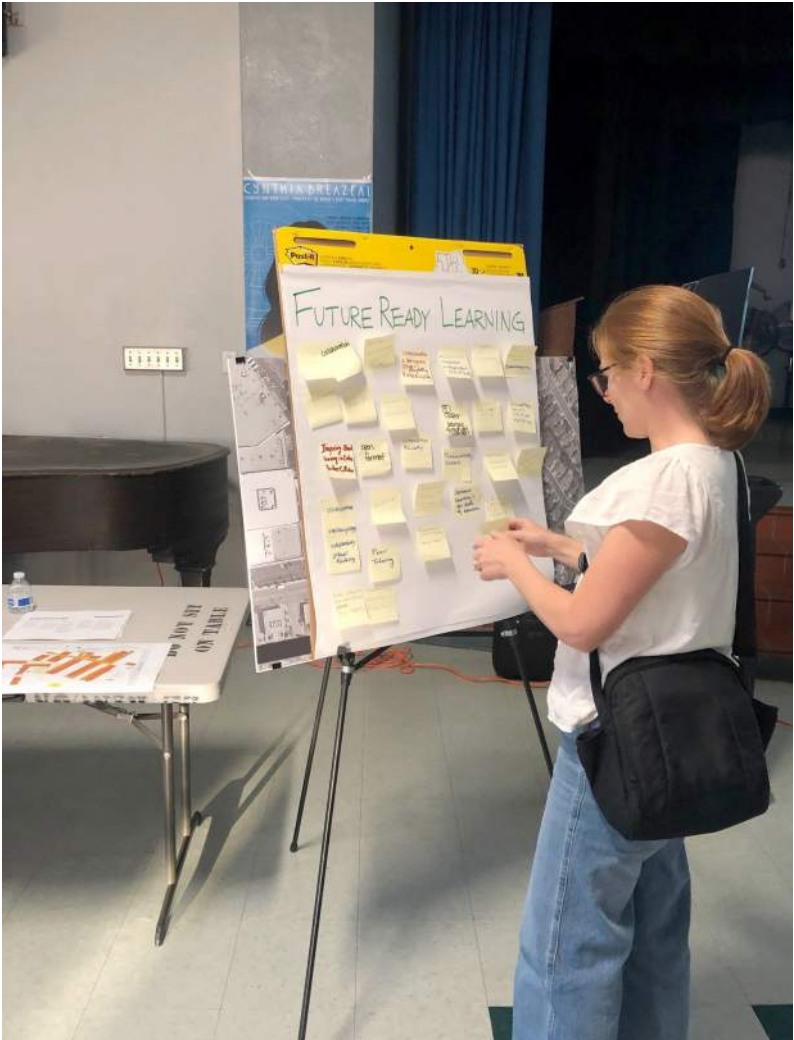


SCHOOL & COMMUNITY ENGAGEMENT



The community engagement process was expedited due to a tight timeline. Despite this challenge, the design team made sure parents and community members' voices were heard and thoroughly considered for the future school.

Focus group interviews with educational leadership and teachers was the driving force for the planning process. The school will play a huge role in the evolution of the Ed Specs by serving as a beta test. The FF&E described in the Ed Specs will be procured as pilot projects in other schools first, using more interviews, professional development, and surveys to inform the FF&E for this campus.



EDUCATIONAL ENVIRONMENT

One of SMBSD's core values is "We believe the greatest learning occurs in a safe environment." A U-shaped site configuration of mainstream learning studios, interwoven with special needs learning studios, wraps around students and staff creating a safe and welcoming courtyard with various zones to support different learning styles. The learning studios directly connect to the outdoor spaces with transparency making a clear line of sight to all outdoor areas. This planning principle is key to empowering students to take more ownership of their learning in a safe environment. The Learning and Gathering Courtyard becomes a place of countless collaboration and learning opportunities with shaded zones equipped with Wi-Fi and loose furniture to facilitate any type of learning style outdoors.

A strong design driver is a vision for an inclusive environment that supports students with special needs. Mainstream learning studios and the special education studios are interwoven and adjacent to the Learning Commons where learners can connect with each other naturally and engage in social emotional learning experiences.

The Therapeutic Learning Suite has various types of spaces to support the needs of Special Education students, including a Re-boot Room to help students de-escalate and an Honors Room to reward good behavior. The Severe SDC Learning Studio is centrally located below the library and opens to another, greener side of the courtyard affording this group opportunities to spend more time in nature.



Therapeutic Learning

EDUCATIONAL ENVIRONMENT



Kindergarten Classroom

EDUCATIONAL ENVIRONMENT



Collaboration Area

EDUCATIONAL ENVIRONMENT



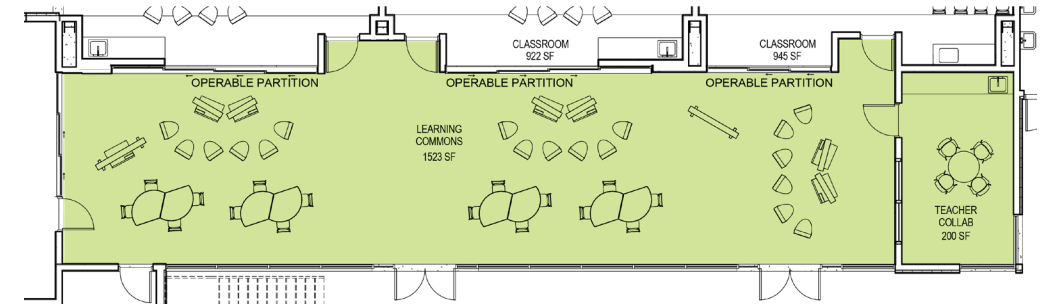
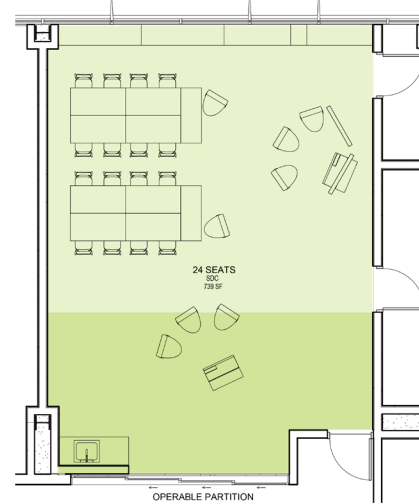
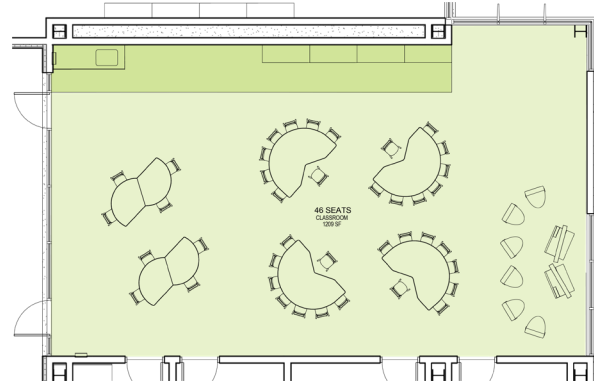
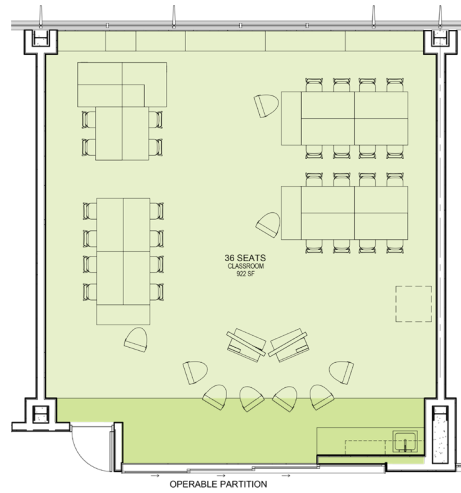
Elementary Learning Studio

EDUCATIONAL ENVIRONMENT



Multi-Purpose Room Stage

EDUCATIONAL ENVIRONMENT



Collaboration Area - Visual Connection to Outdoor Learning

EDUCATIONAL ENVIRONMENT

Outdoor learning was a crucial component of the design. The U-shaped buildings create a safe and secure outdoor courtyard that provides different areas for outdoor learning.

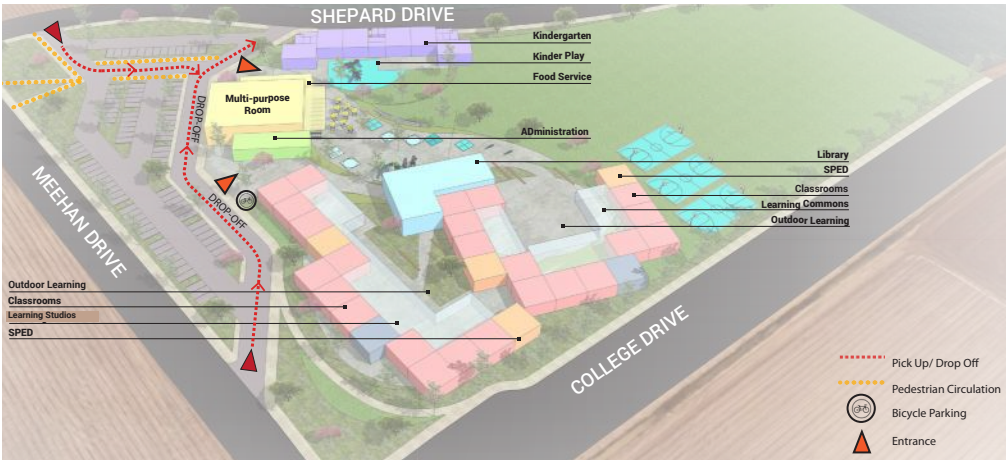
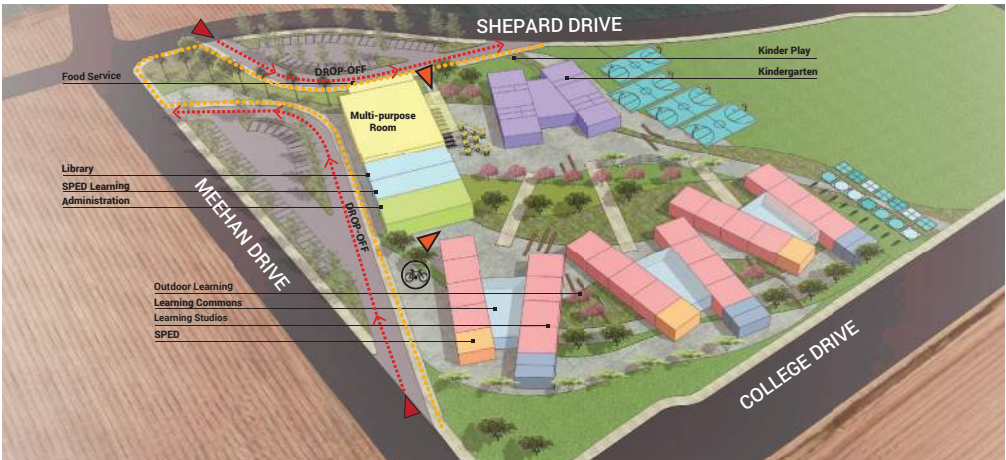
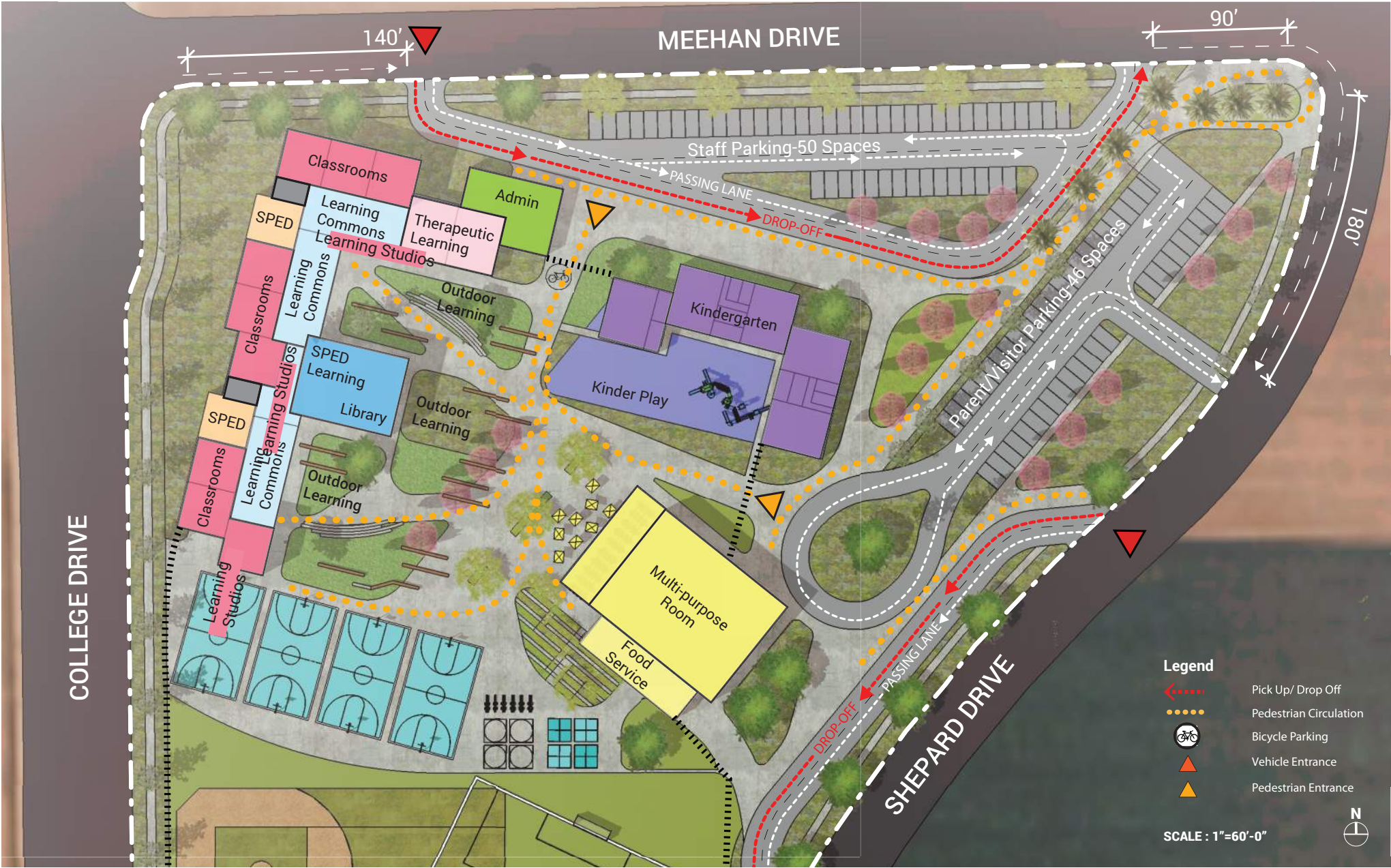
The design team used multiple opportunities to program the outdoor areas and make them meaningful educational spaces.

The learning and gathering steps are designed to be a casual gathering space, suitable for holding an outdoor class. Since the stairs are located next to the library, students can utilize this space for reading books and working on their individual assignments.



Learning Stairs

PHYSICAL ENVIRONMENT



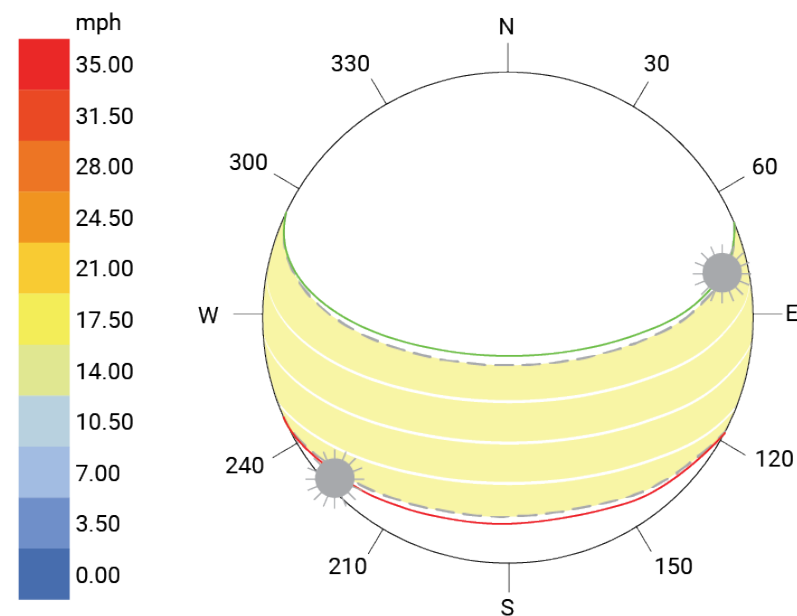
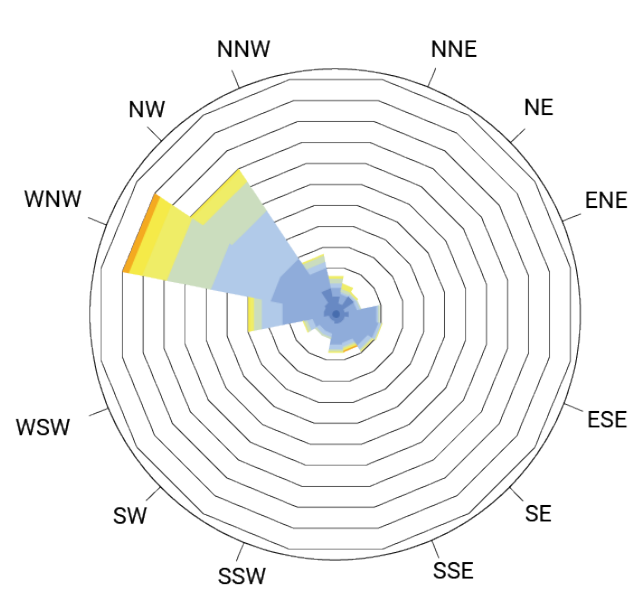
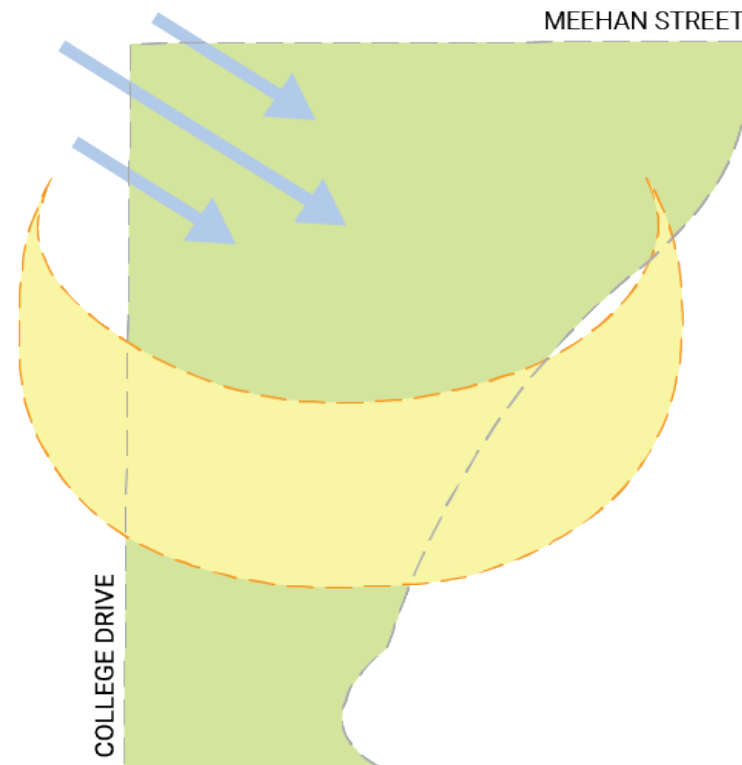
As a top priority not only to Santa Maria-Bonita School District, but also to any School District, security is one of the most crucial factors that impact a design. After multiple studies on site flow and circulation, security vulnerabilities were considered by using a combination of buildings as the campus edge with two main controlled entrances: one between the Administration Suite and Kindergarten Suite, the second between the Kindergarten Suite and the Multipurpose Building.

PHYSICAL ENVIRONMENT

Besides providing a safe and flexible space for future ready learning, sustainability is also a key driver for the design of the new elementary school. Key sustainability strategies include:

- Maximized daylight in the learning studios
- Energy efficient lighting
- Overhangs to protect the interior from overheating
- Drought tolerant landscaping
- Bioswales in the courtyard,
- All buildings photovoltaic ready
- Student garden that grows produce to be served at lunch time with light cooking incorporated into the health education curriculum

Building aesthetics were also carefully studied through many iterations, giving the school, community, and other stakeholders possibilities to explore and investigate as the preferred solution for their youth.



PHYSICAL ENVIRONMENT



Playground



Outdoor Learning



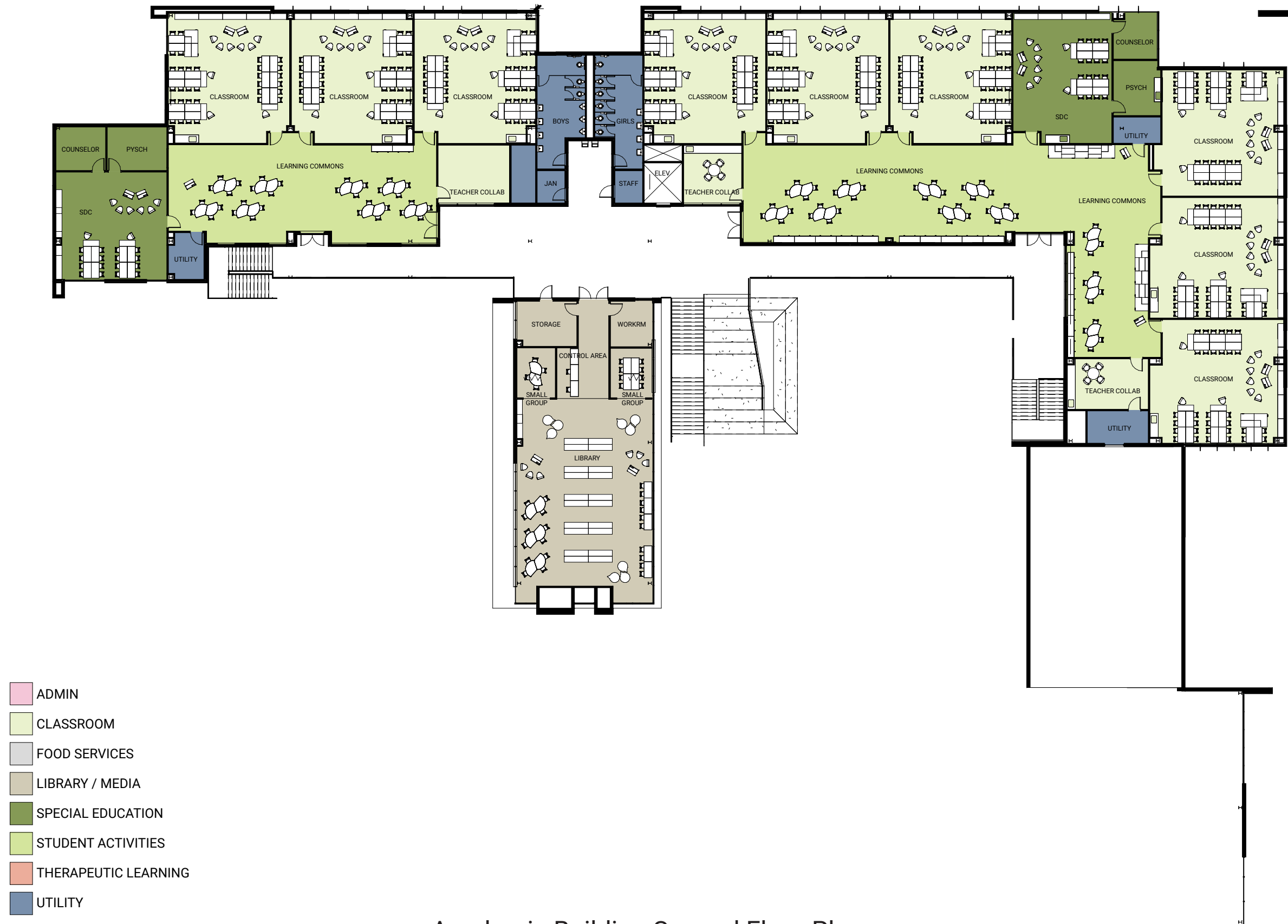
View of Library

PHYSICAL ENVIRONMENT



Academic Building First Floor Plan

PHYSICAL ENVIRONMENT



Academic Building Second Floor Plan

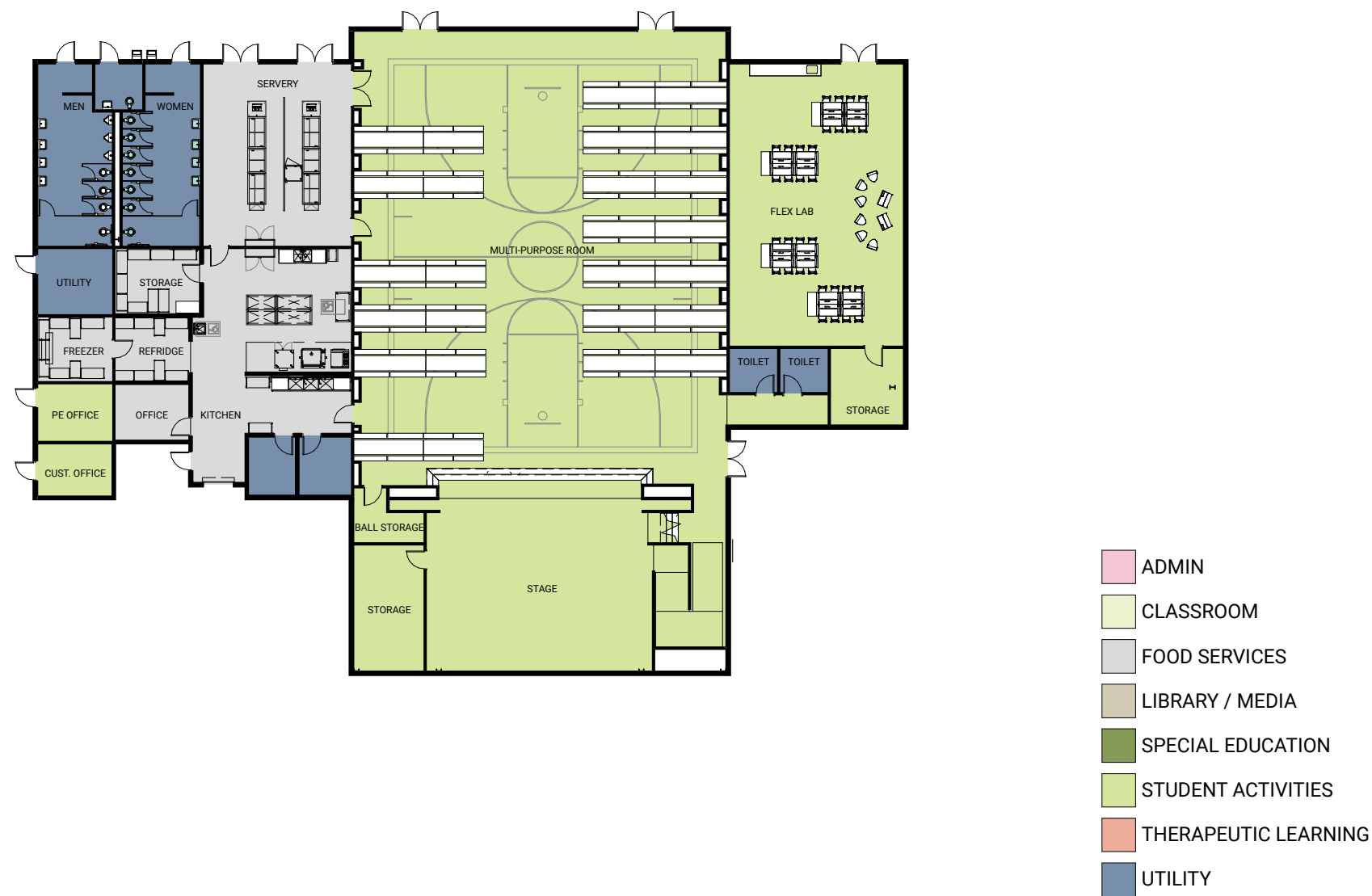
PHYSICAL ENVIRONMENT



- ADMIN
- CLASSROOM
- FOOD SERVICES
- LIBRARY / MEDIA
- SPECIAL EDUCATION
- STUDENT ACTIVITIES
- THERAPEUTIC LEARNING
- UTILITY

Kindergarten Building

PHYSICAL ENVIRONMENT



Multi-Purpose Building with Tinker Studio

OUTCOME



Santa Maria-Bonita School District officials held a groundbreaking ceremony to mark the start of construction for the new Bill Libbon Elementary School, where their vision for the future of education becomes reality, reaching new heights.

"I feel because it's a new and exciting design, it will give folks an opportunity to maybe be more collaborative and to also have a better sense of school community because we're going to be a little closer together," said Santa Maria-Bonita School District board member Vedamarie Alvarez-Flores.



OUTCOME



View of Multi-Purpose Building and Kindergarten Play Yard

BILL LIBBON ELEMENTARY SCHOOL

SANTA MARIA- BONITA SCHOOL DISTRICT

OUTCOME



Library - Media Center

BILL LIBBON ELEMENTARY SCHOOL



Elementary Learning Studio



Multi-Purpose Room

SANTA MARIA- BONITA SCHOOL DISTRICT

OUTCOME



Collaboration Area

OUTCOME



Multi-Purpose Building

BILL LIBBON ELEMENTARY SCHOOL

SANTA MARIA- BONITA SCHOOL DISTRICT

OUTCOME



Academic Building and Library

BILL LIBBON ELEMENTARY SCHOOL

SANTA MARIA- BONITA SCHOOL DISTRICT

OUTCOME



Library