

Crafton Hills College Performing Arts Center

A4LE Southern California Chapter
2021 Award of Excellence Entry



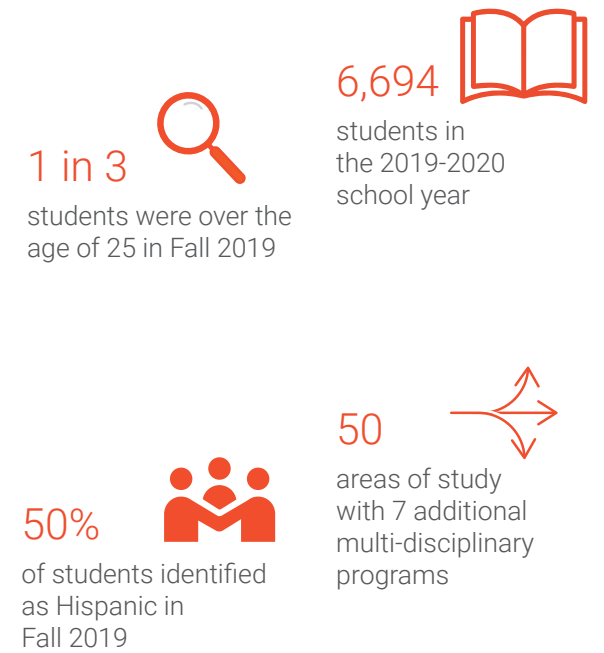
Executive Summary



CHC Design Achievement

Crafton Hills College desires a top-rated, modern performing arts venue that better meets the needs of music and theater students and faculty while elevating the College's identity in the surrounding area. The original performing arts center, built as a cast-in-place concrete structure, has become an impediment to current and future teaching needs. The existing facility suffers from a lack of accessibility, outdated infrastructure and technology, and offers no natural daylight in teaching spaces or offices. DLR Group's design for a new facility remedies these deficiencies and leverages a prominent location on Campus Drive to expose the arts to the surrounding community and connect with the main campus quad. The architecture maintains an efficient footprint while providing access to the outdoors for light, views, and gathering spaces to support the building as a net zero energy use arts building. The design vocabulary draws upon the mid-century vernacular of the campus, and connects to the surrounding context and to nature. Building massing is simple and aligned with campus architectural standards, while decorative screens evoke the vibrancy of the arts and create shaded courtyard spaces. An open plaza accommodates informal outdoor performances, showcasing the talent within the performing arts departments to the broader campus and creates a "home away from home" for arts students.

CHC Fast Facts



Scope of Work & Budget

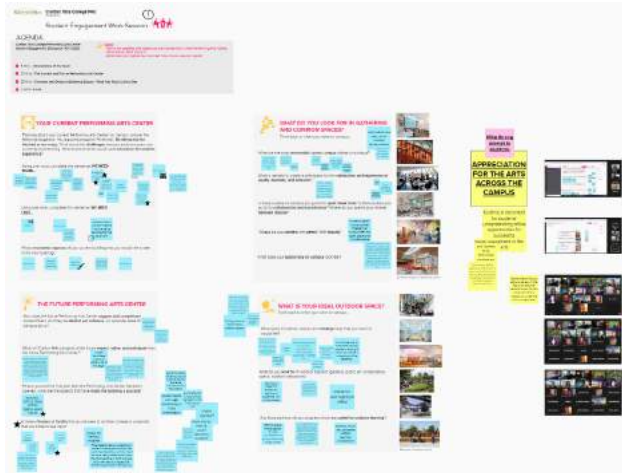
Scope Summary:

The partial two-story building is defined by east and west wings, with a central outdoor gathering space uniting the two volumes. The 24,100 SF center will include a lobby and courtyard, a 264-seat proscenium theater, black box theater, and backstage facilities such as dressing rooms, green room, offices, storage, scene shop, and costume shop. The west portion of building contains music educational spaces, including the flexible rehearsal rooms, recording control room, and practice rooms with views toward the adjacent landscape and hillside beyond. The complex will be equipped with generation theater technology and acoustics and accommodate a variety of music, theater, and dance performances and events. The building engages the topography of the site with its partial second story for on grade accessible access as well as for earth-berming to passively heat and cool the building. The project is targeting LEED Gold certification and net-zero energy use to become an innovative case study for sustainability in arts facilities. DLR Group is providing integrated design services including architecture, interiors, engineering (mechanical, electrical, structural), technology (acoustics, audiovisual, IT/security, theatrical), and sustainable design services.



Client	Crafton Hills College
Location	11711 Sand Canyon Rd, Yucaipa, CA 92399
Approved Budget	\$34,500,000
Approved GSF	24,100 Sq. Ft.
Category	Conceptual Design

School and Community Engagement



Engaging with the students, faculty, and community were essential to the design of the new Performing Arts Center. Early in the design process, a student engagement work session was held to determine how they use the existing Performing Arts Center on a daily basis, what works and does not work within the existing space, and to define what qualities and values they want to see from the new Performing Arts Center. Students met with the design team virtually to have a discussion and answer guided questions (sample questions and answers are shown to the right) so that their feedback would be a fundamental aspect of the design process. Some responses that influenced the design were the need for flexible gathering spaces that accommodate small and large groups, integrating technology to accommodate in-person and virtual learning, the desire to exemplify future campus sustainability standards, and to expose the arts to the campus and the community.

Faculty and facilities were engaged in additional discussions in order to accommodate the daily needs of everyone engaging with the Performing Arts Center.



What improvements could **enhance the student experience**?

Integrated **technology** for future flexibility.

Virtual and physical accessibility.

An area where large groups can practice together is needed.

Design of performing and practice spaces that are acoustically tuned to their needs.

Small nooks and quiet spaces; theater students spend a lot of time at the PAC.

Large enough space for outdoor performances, especially during the COVID era.

Student-focused common spaces that are **flexible** and **collaborative**.

Connect the classrooms and practice rooms inside the building to the outside.



What is the role of this facility **now and in the future**?

Act as a **beacon** for the arts on campus and in the community.

Encourage informal student gatherings that are conducive to study, rest, and performance.

Expose the arts to the public by integrating the building to the rest of campus and creating a presence for the arts.

Exemplify innovative sustainable LEED **net zero solutions** for the campus with connection to the campus solar master plan.

Physical Environment - Context

Early in the design process the design team completed climate analysis to better understand the natural context and based on their findings, recommended shading strategies to improve overall building performance and sustainability.

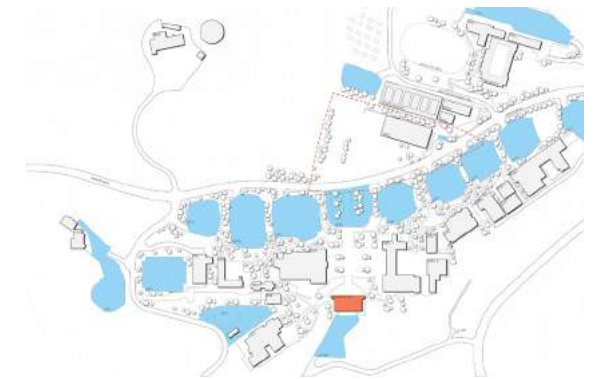
The design of the new Performing Arts Center will draw inspiration from the campuses California Modernism roots and promote its sustainable campus vision. The new building will meet the project's goal of net zero energy, while complying with the current Title 24 guidelines.



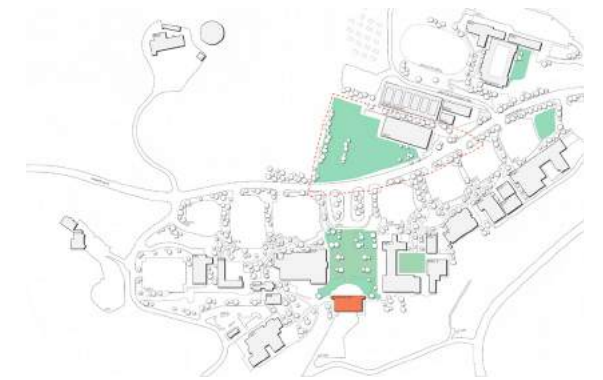
Site Wind and Sun



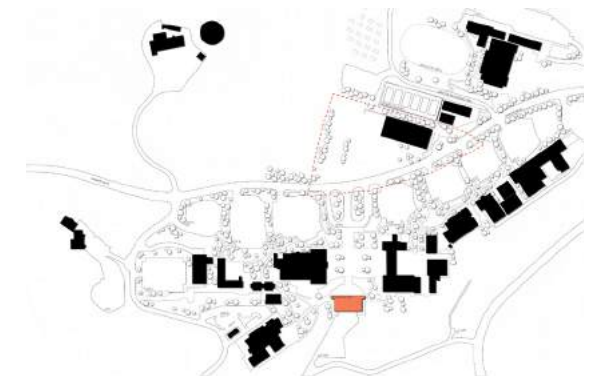
Site Circulation



Existing Parking

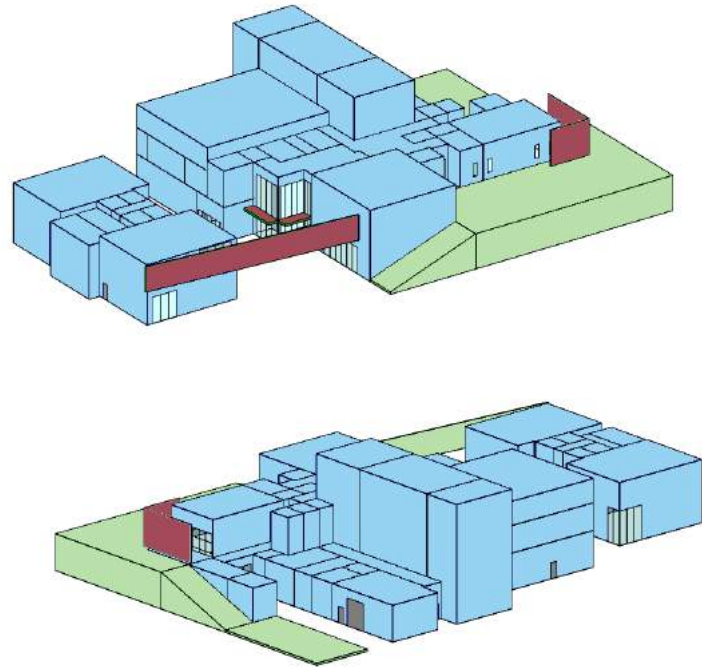


Existing Green Space



Campus Density

Physical Environment - Façade and Site



- ENTRANCES**
Shading walls and canopies mark the prioritized entries
- PROGRAM**
Organized to create a student courtyard and immediate adjacencies to the arts spaces. "Arts on Display"
- SITE**
Earth Bermed zones to passively heat and cool the building.

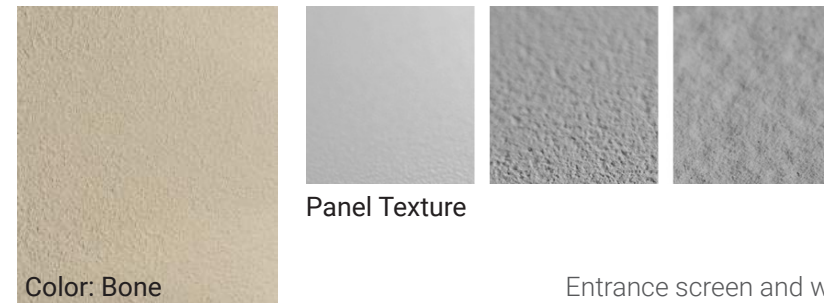
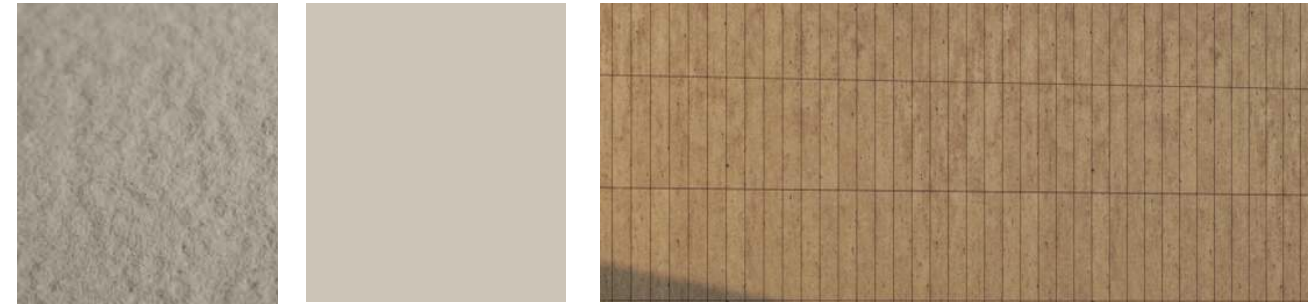
The building massing is meant to be simple and reminiscent of recent and original buildings on campus and in line with campus architectural standards, while also evoking the arts through decorative screens creating shaded courtyard spaces. The architecture of the building maintains the tightest footprint possible while providing access to the outdoors for light, views, and gathering spaces. The building engages the topography of the site with its partial second story for on grade accessible access as well leveraging the topography for earth-berming to passively heat and cool the building. The project is oriented east-west to maximize exposure to Campus Drive and to utilize north clerestory daylighting. By engaging with the site topography, there is also the potential to use earth tubes to pre-cool or pre-heat the intake air for the mechanical systems

The exterior façade is meant to showcase artistic expression while remaining grounded in the landscape and a connection to nature. The façade creates silence within the building and represents a layering of exterior natural elements through its materiality, creating a welcoming and peaceful environment for the performing arts.

Exterior Façade Palette

Exterior Rainscreen Cladding:
UHPC (ultra high performance concrete) panel

Exterior Façade Panel System



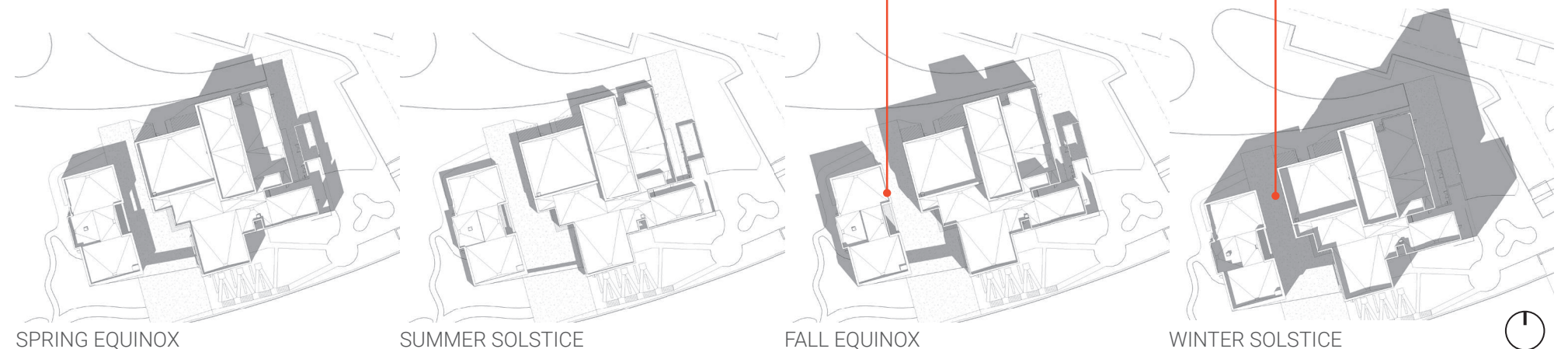
Exterior Finish: EIFS
to match cladding materials

Panel Texture

Color: Bone

Entrance screen and western music labs begin to shade majority of student courtyard.

The interior courtyard as well as the two north buildings are shaded nearly the entire day



SPRING EQUINOX

SUMMER SOLSTICE

FALL EQUINOX

WINTER SOLSTICE



Physical Environment - Sustainability



The design of the new performing arts center will build upon the rich history and the existing mid-century vernacular of the campus. It will reinforce the campus' desire to connect its buildings to the surrounding context and to nature. It will draw inspiration from the campus' California Modernist roots and promote its sustainable campus vision.

The new building will have a high performance envelope and roof required to meet the project's stated goal of **Net Zero energy** and the current title 24 guidelines. The materials used will feel familiar to the campus; the building systems will be robust and used in a way to not present a maintenance burden for the facilities department. Sustainability components will consider total cost of ownership as a determination for feasibility and integration into the design. There is potential for this project to reach **Net Zero water** as well as Energy.

Terrace

for the campus and community

The new site is in a very prominent location to provide a sense of identity for the campus to the surrounding community, as well as to connect the CHC campus with the arts. The design is simple and reminiscent of buildings on campus, while also evoking the arts through decorative shade screens creating shaded courtyard spaces.



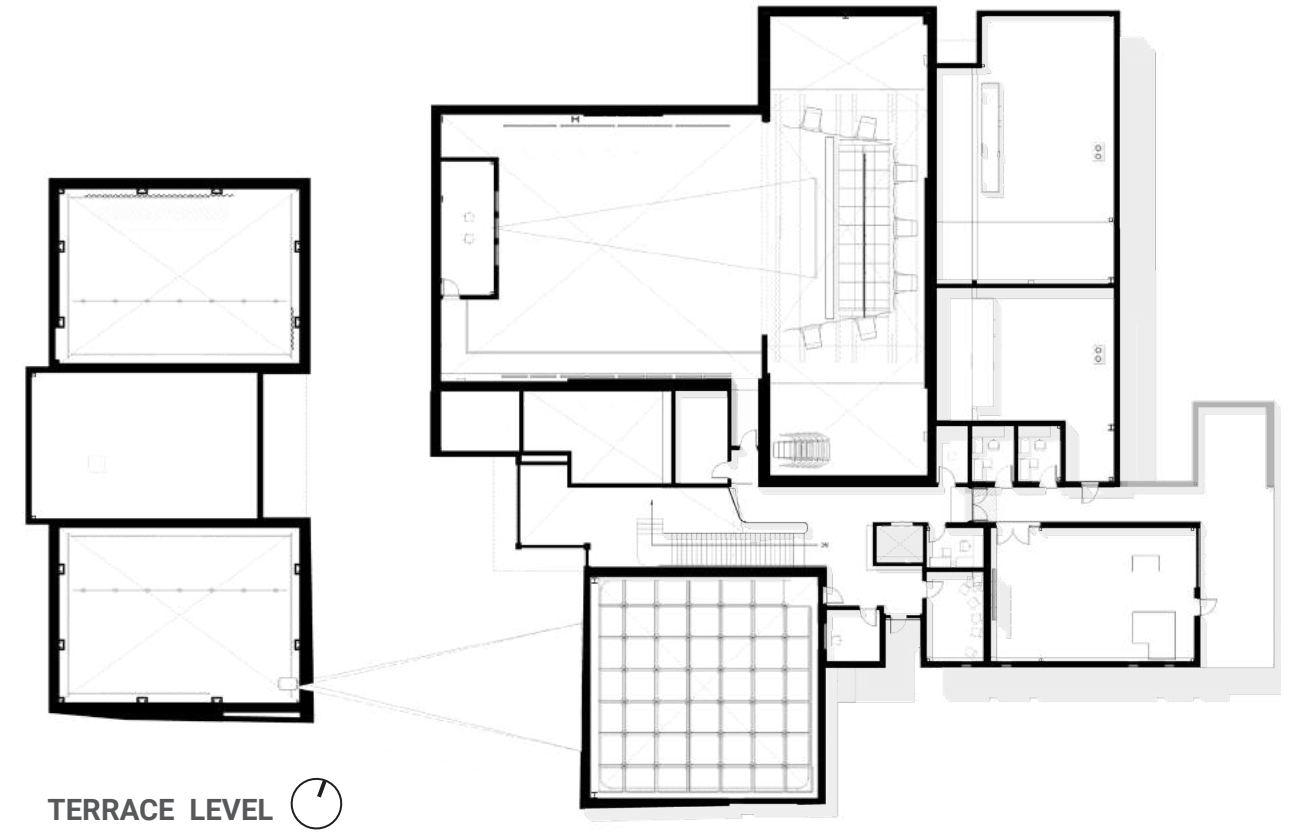
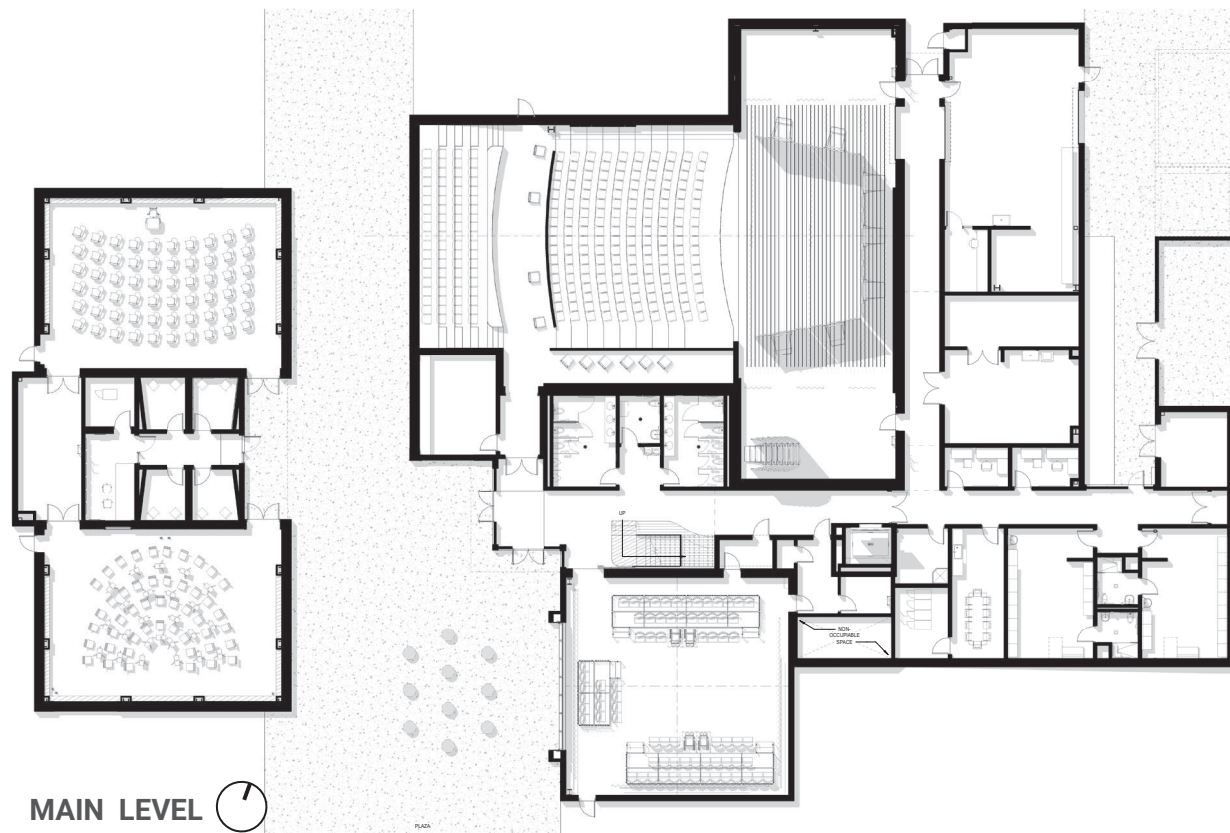
Educational Environment - Building Program

The new site is in a very prominent location to provide a sense of identity of the campus to the surrounding community, as well as to connect the CHC campus with the arts, with a prominent connection to the main campus quad toward the southwest. The design approach includes informal accommodation of outdoor performances through an open plaza, to further connect with the broader campus, and showcase the talent within the department. The outdoor courtyard is also connected to the lobby and provides some additional area for informal seating and gathering as part of a “home away from home” for arts students.

The partial two-story building is defined by an east and west wing, with a central, outdoor gathering space providing a space to unite the two building volumes. Performance spaces, including the proscenium theater, black box theater and the music classrooms are all publicly accessible from the lobby toward the south, and where appropriate to the use of the space, provide visibility to the lobby, strengthening the connection of the arts and emphasizing the talented performers within the department.

Performer, faculty and student access has been organized to connect with the north east entry of the Performing Art Center to connect directly with parking.

The west portion of building volume is comprised of music educational spaces, including the lab classroom rehearsal rooms, recording control room, and practice rooms having views toward the adjacent landscape and hillside beyond.



Educational Environment - Vision & Goals

The project will offer a sense of place that **promotes the arts**, both through the education of the student and the culmination of that effort through the performance venues. The building's design will thoughtfully **integrate** daylight, access to nature, and the use of natural materials with proper acoustic attenuation to create spaces that enhance the health and wellness of the students and faculty. Rather than focusing common spaces toward performances, the primary use of the lobby and courtyard will be for student use for **learning and collaboration**.



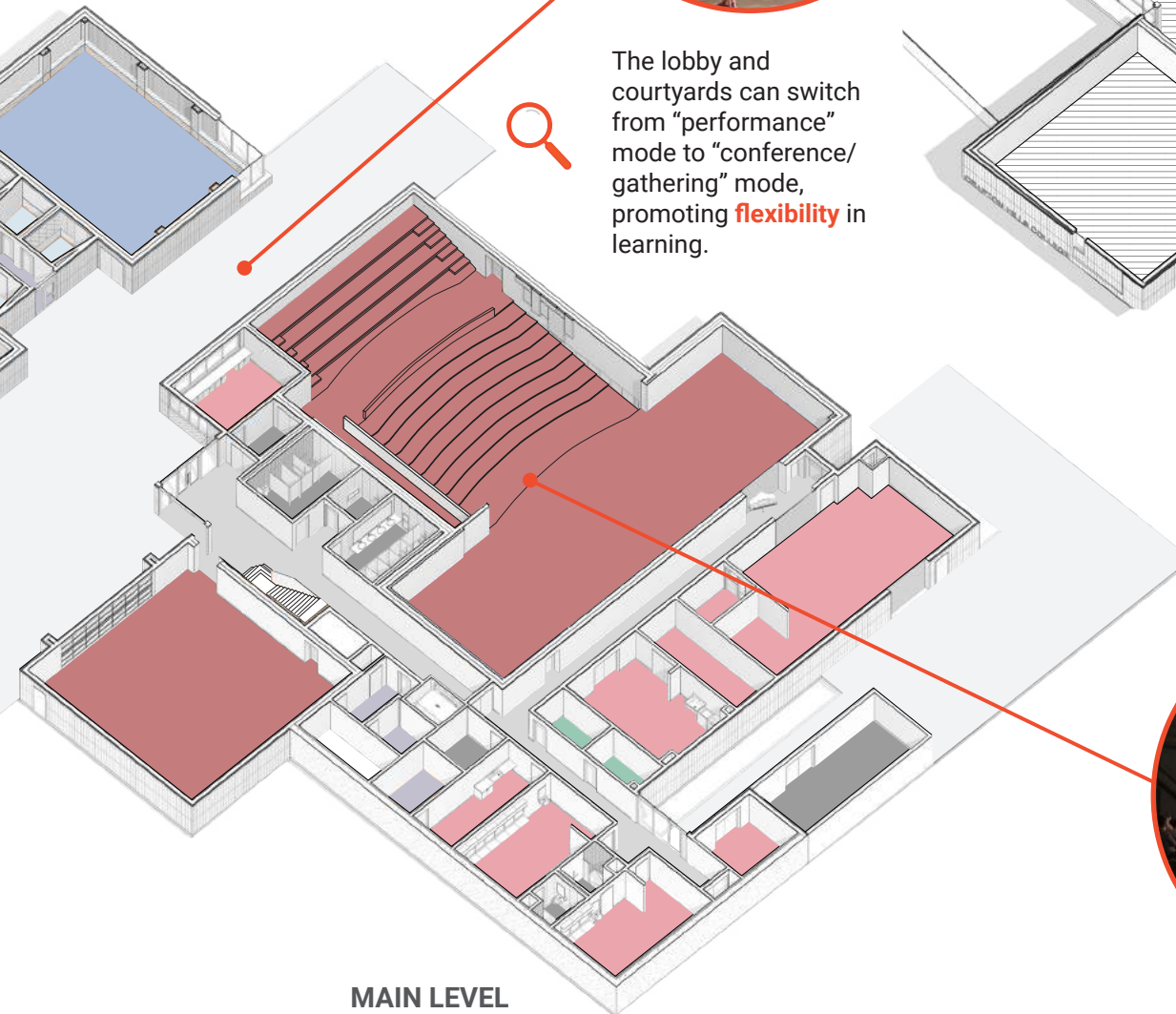
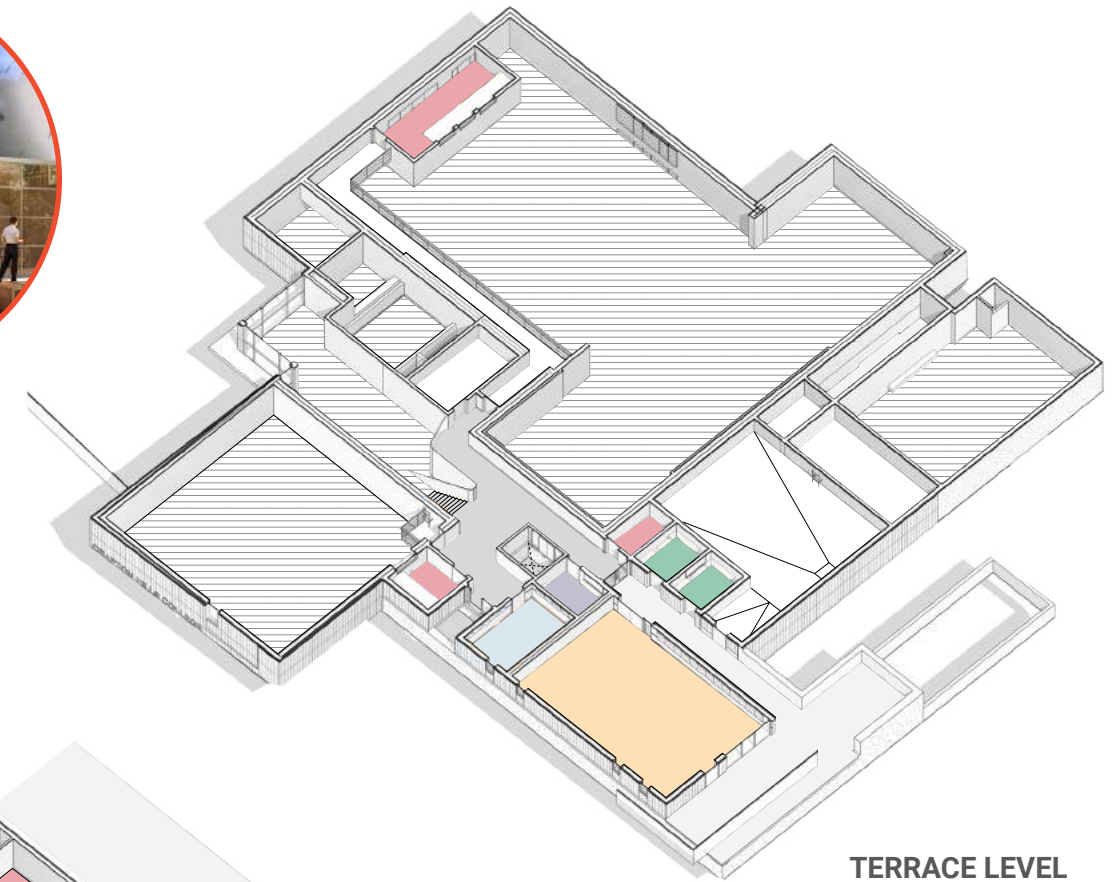
The flexible classrooms **elevate** the learning and teaching experiences of students and faculty.



- Classrooms
- Performance Space
- Practice Rooms
- Performance Back of House
- Storage
- Piano Lab
- Offices



The lobby and courtyards can switch from "performance" mode to "conference/gathering" mode, promoting **flexibility** in learning.



The 300-seat auditorium can accommodate student performances and **exposes the arts** to the campus and community.



Integration of learning between disciplines

The new Performing Arts Center will instill a sense of pride among the students and develop their learning to help them elevate their skills to meet current and future real world needs. The primary education spaces are thoughtfully placed to encourage a collaborative, teaching and learning environment, promoting “Intellectual Loitering” between disciplines.

Educational Environment - Vision & Goals



Flexible and Collaborative Spaces

One of the project's goals is to create a top-rated performing arts facility for the students and faculty coming to campus every day, and to design a building that will instill a sense of pride among the students and develop their learning to help them elevate their skills to meet current and future real world needs.



Exposing the Arts

The building will offer a variety of visual and physical connections to the arts and performance spaces. Exposing the Arts will be made easily accessible to all, allowing the students and the greater community a conduit to discover all of the opportunities the Music and Theater Arts Departments can offer.



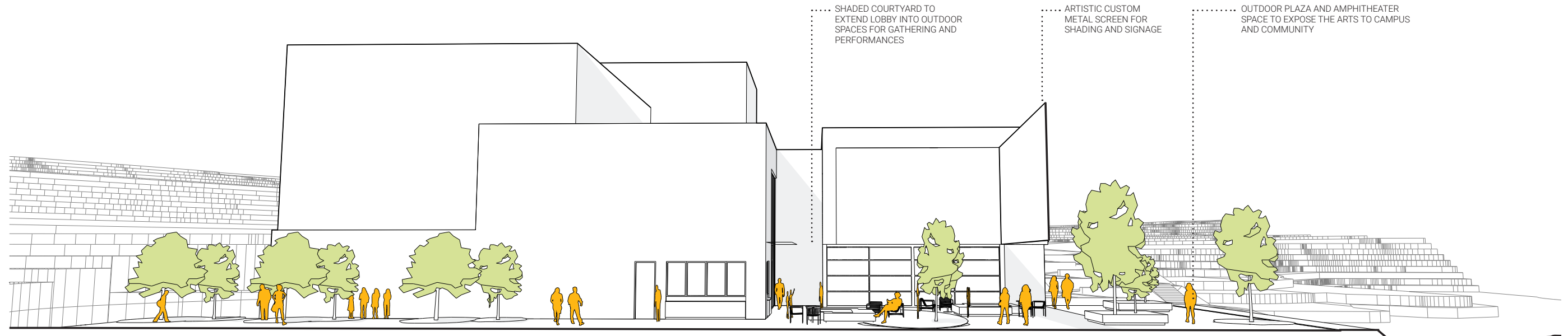
Student-Focused Spaces

The project will offer a sense of place that promotes the Arts, both through the education of the student and the culmination of that effort through the performance venues. Rather than focusing common spaces toward performances, the primary use of the lobby and courtyard will be for student use for learning and collaboration. These spaces will be designed with flexibility to switch to a 'performance mode' or 'conference/gathering' mode that will suit audiences in a professional and beautiful manner.



Integrated Sustainable Systems

The design of the new performing arts center will build upon the rich history and the existing mid-century vernacular of the campus. It will reinforce the campus' desire to connect its buildings to the surrounding context and to nature. It will draw inspiration from the campus' California Modernist roots and promote its sustainable campus vision. The new building will have a high performance envelope and roof required to meet the project's stated goal of net zero energy and the current title 24 guidelines.



PLAZA



COURTYARD



PLAZA



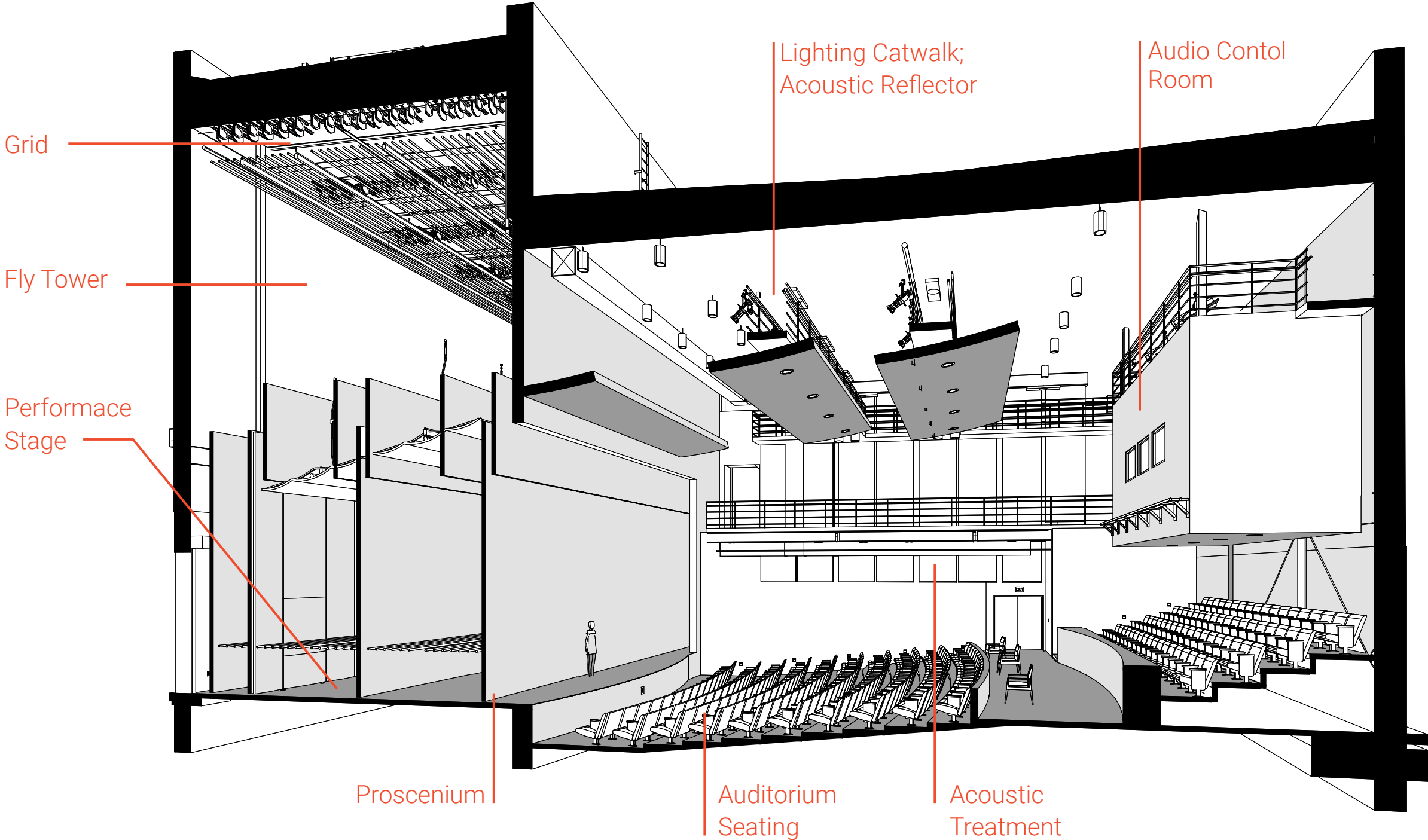
CAMPUS DRIVE

Collaboration and flexibility for all

The building's lobby, collaborative spaces and common areas are intentionally placed to not prioritize one department over the other allowing all students to feel "at home" within the building. Spaces will be designed to promote use by all students as a place to gather, study, and promote campus unity.



Educational Environment - Dramatic Arts Anatomy



Exposing the Arts

education, rehearsal, performance

The building will offer a variety of visual and physical connections to the arts and performance spaces. Exposing the Arts will be made easily accessible to all, allowing the students and the greater community a conduit to discover all of the opportunities the Music and Theater Arts Departments can offer.





**Crafton Hills College
Performing Arts Center**