

CARVER ELEMENTARY NEW CLASSROOM BUILDING



EXECUTIVE SUMMARY

The goal of this project was to provide a new 2-story classroom building, and related improvements at George Washington Carver Elementary School that would:

- 1 Provide enhanced classroom learning environments.
- 2 Provide increased campus safety and access.
- 3 Develop greater outdoor learning and activity opportunities.
- 4 Inspire students with an understanding of the accomplishments of the school's namesake, botanist and educator, George Washington Carver.



SCOPE OF WORK & BUDGET

The project includes a 9,900 SF 2 story classroom building, new outdoor classroom, a new lunch shelter, new campus entry, expanded parking lot, turf playfield, new hardcourts, and new apparatus areas.

- Total construction budget | \$7.6 M

- Total construction cost | \$7.4 M



SCHOOL & COMMUNITY ENGAGEMENT

A comprehensive educational specification and facilities master plan process was conducted to identify facility improvement goals to support the curriculum and instruction delivery process as well as the District's Mission and Vision. This process included a series of meetings and presentations with parents, educators, and community members as well as District leadership. The result was a guide for the design of Carver Elementary School.

The specific challenges at Carver included accommodating 640 K-5 students on a very small 3.7- acre urban site, and providing additional facilities for upper grade students, since the site was previously a K-3 grade campus.





640

K-5 CARVER
STUDENTS
ENROLLED



88%

OF CARVER STUDENTS
SOCIOECONOMICALLY
DISADVANTAGED



56%

OF CARVER
STUDENTS ARE
ENGLISH LEARNERS



99%

OF CARVER
STUDENTS ARE
LATINO



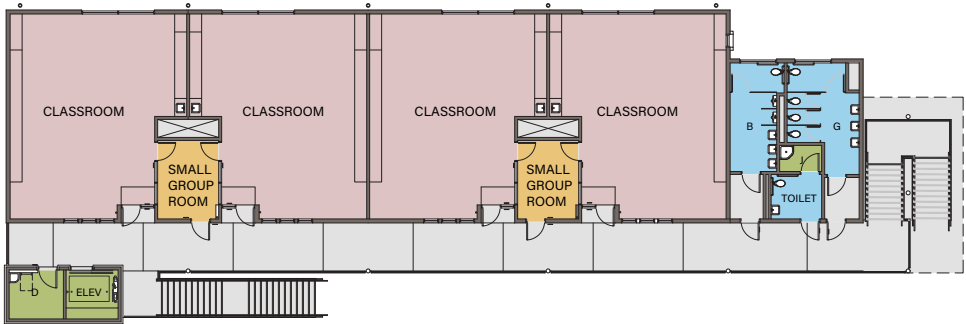
3.7

ACRES TOTAL
CAMPUS AREA

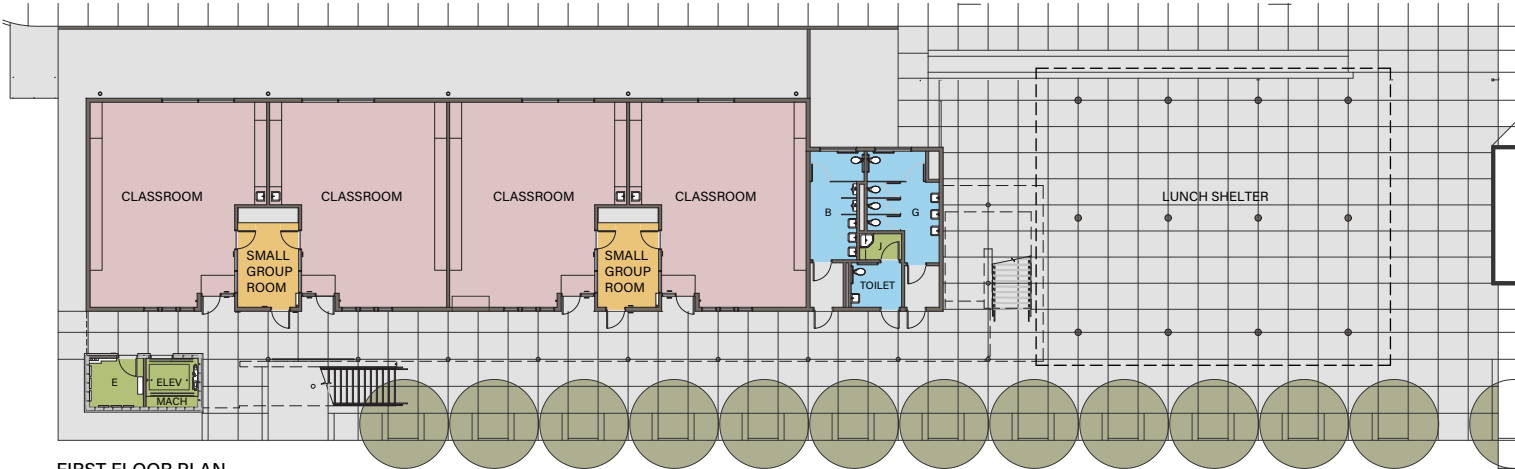
EDUCATIONAL ENVIRONMENT

The goals identified in the planning process included:

- Develop greater outdoor learning and activity opportunities.
- Provide enhanced classroom learning environments.
- Provide increased campus safety and access.
- Inspire students with an understanding of the accomplishments of the school's namesake, botanist and educator, George Washington Carver.



SECOND FLOOR PLAN



FIRST FLOOR PLAN



“When you can do the common things of life in an uncommon way, you will command the attention of the world.”

George Washington Carver



This resulted in classrooms with natural light from windows on both the north and south walls, teaching walls, interactive digital displays and flexible office/small group learning rooms that connect adjacent classrooms to support collaboration and flexible groupings for differentiated learning.

A 2-story design was chosen to allow for more outdoor learning and activity spaces with a several formal and informal outdoor classrooms.

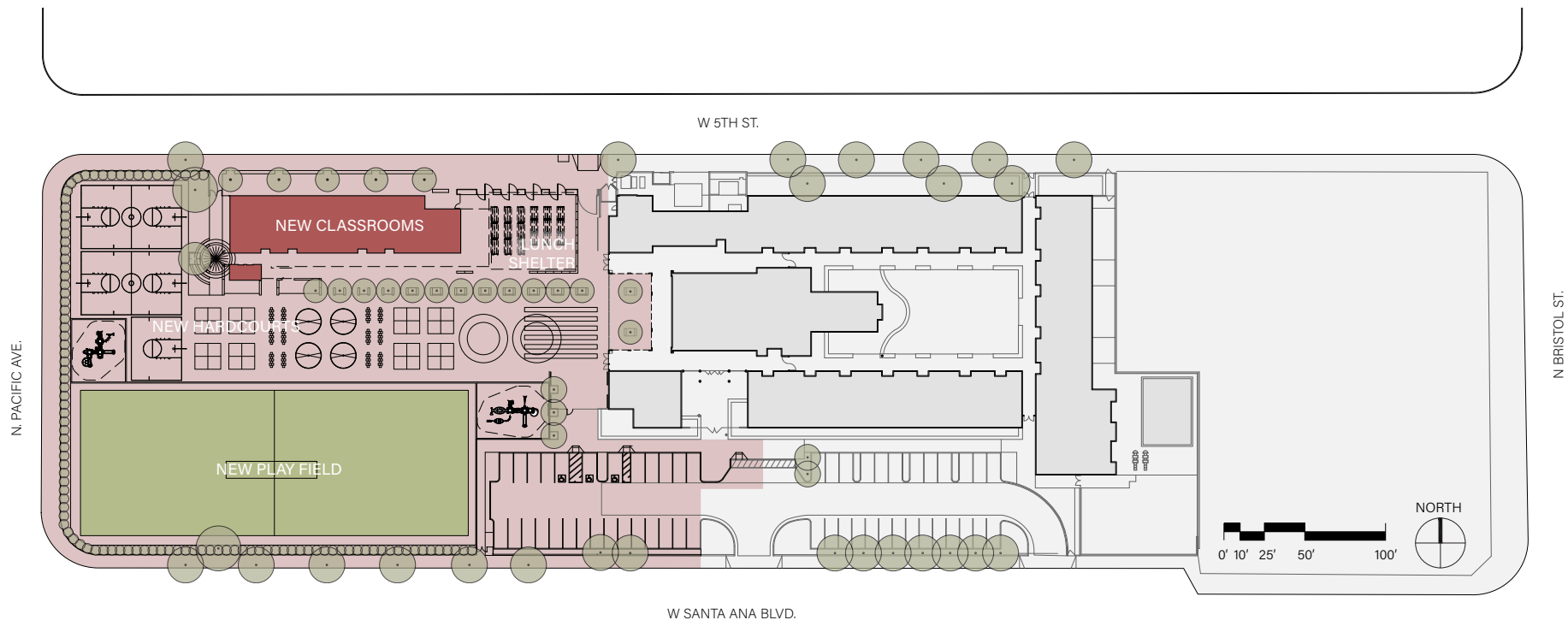
Student gardens at the base of the mural of George Washington Carver and an espalier green wall entry portal covered in citrus vines provide learning opportunities for students to explore botany, local agricultural history and understand the achievements of George Washington Carver. This also allows sharing of produce with the neighborhood to strengthen community engagement. The Citrus wall between the drop off and campus interior creates a sense passage from the outside into a secure focused learning environment.



PHYSICAL ENVIRONMENT

The 3.7-acre site is in an urban neighborhood of medium density housing and small to medium size businesses. The new building and lunch shelter sit on the north edge of the site connected by a trellised fence with fruit vines and 4 center pivot gates that provide a welcoming entry portal to students and the community and provides a secure perimeter when the school is closed.

An energy efficient HVAC system was used as well as an energy management system. North windows are maximized in the classrooms and southern windows are shaded. Low water use plumbing fixtures, planting and irrigation was also used on the site.



SITE PLAN

The playground has an outdoor classroom with concrete benches arranged in a half circle as well as a shade row of trees with more seating offering informal learning and socializing opportunities. A new turf playfield and additional parking is on the south side of the site.

A prominent mural of George Washington Carver made of perforated stainless-steel faces the playground and student plaza. The mosaic of multicolored blocks framing the mural represents the quest for racial justice and equality we all must continue to strive for.



PHYSICAL ENVIRONMENT



PHYSICAL ENVIRONMENT

RESULTS OF THE PROCESS & PROJECT

By following the guidelines established in the educational specifications and the Facility Master Plan process the project was able to provide flexible classrooms and small group collaboration rooms that allow a variety of ways to deliver instruction which aligns with the District's student success goals. Additional outdoor learning and activity space was also gained by building a two-story building rather than a single story. These improvements also allow the school to better move from serving grades K-3 to grades K-5.

The new and much larger lunch shelter provides greater outdoor dining and learning activities as well as a new community meeting place.

The mural of George Washington Carver and the planting of new fruit trees and vines was an unexpected outcome inspired by the school's namesake.





“We are really excited to be able to keep our families and community together from TK through 5th grade. It really gives us an opportunity to get to know the families and the community and really be a part of each other’s lives”

Principal Kim Ahvari