



**Grover Cleveland Charter High School**  
Comprehensive Modernization  
*Los Angeles Unified School District*

View from existing quad into new expanded quad with performing arts center (right), general classroom building (left), and science classroom building (beyond).





## Site Plan

The comprehensive modernization includes construction of seven new buildings and modernization of three buildings. The placement of new buildings creates an enlarged all-school quad, arranged along the classic mid-century "finger plan" datum.

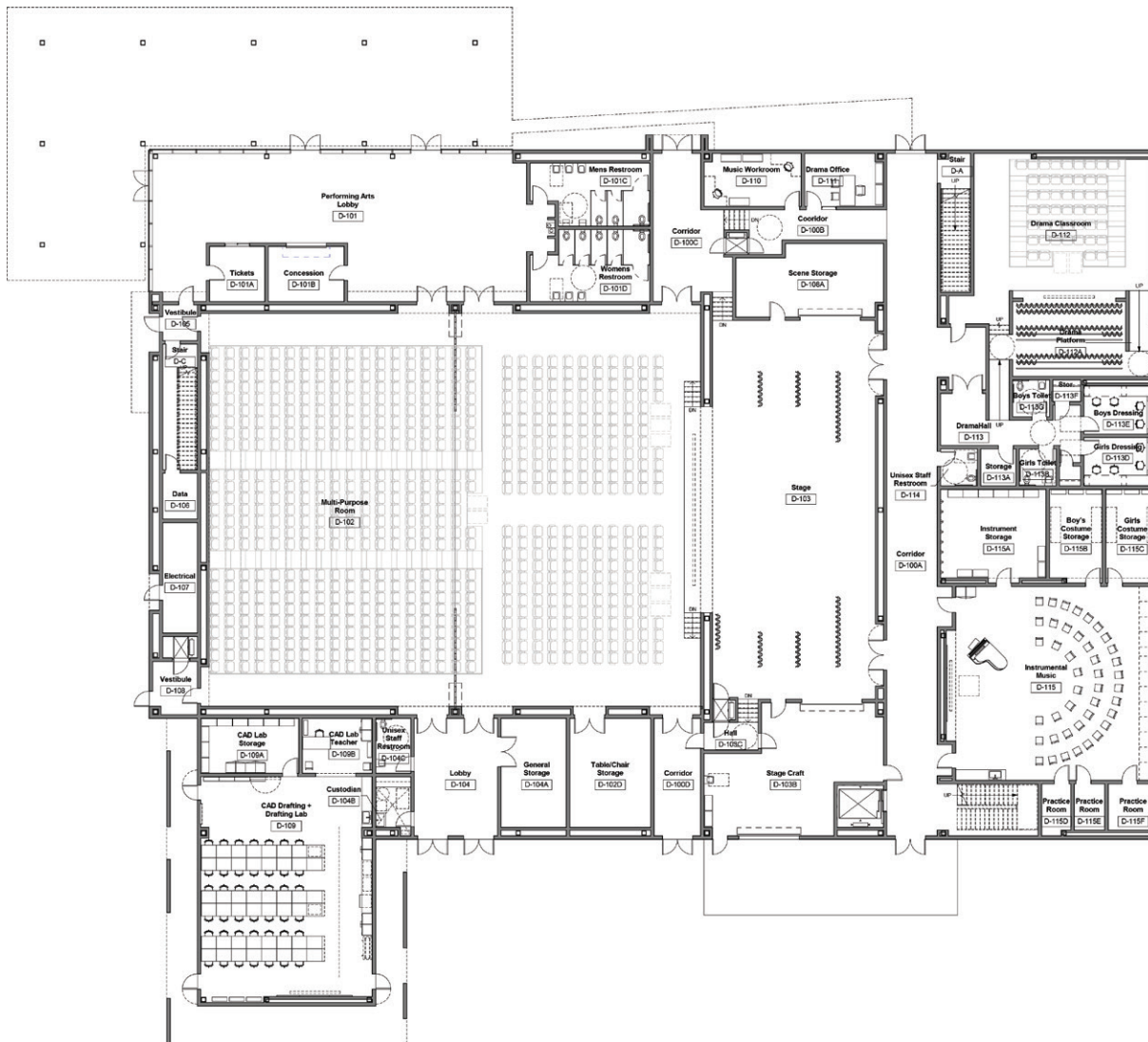




## Contextual View

A critical design challenge was to more than **double** the existing building area on campus while being respectful of the historical context of the original “finger plan”, while minimizing their visual impact on the community. The new buildings are placed in line with the existing orthogonal grid, with the tallest building furthest from the street.





## Ground Floor Plan Performing Arts

This building includes classrooms for drama, dance, instrumental music, choral music, drafting, and a multipurpose room with stage. It anchors the south edge of the expanded quad and creates a back drop for an exterior stage.





## Exterior View New Quad

The expanded quad area will function as the heart of the campus, serving as an exterior classroom, performance space, and casual seating area. The school's dance studio, framed by large glazed windows, will cantilever into the quad, further enlivening the space and acting as a back drop for an exterior stage.





## Interior View Science Core

Building B will include 16 science labs on the south end of the 2<sup>nd</sup> and 3<sup>rd</sup> floors, creating a “science core”. The floors will be connected by an internal stair in one of three large light wells that will bring daylight through the building, creating a non-institutional atmosphere.





## General and Science Classrooms Building B

- 1 The exterior will be characterized by veneer brick from the same manufacturer as the original school, and a metal skin system.
- 2 A robotics lab/maker space will open to an adjoining outdoor learning space.
- 3 The building will be accessed through a three-story lobby.





## **Quad/Lobby Interface**

At night, the glow of the double-height lobby will attract visitors to the quad from the school entrance enhancing wayfinding. The quad will also function as a pre/post function gathering space with direct access to the lobby and the outdoor stage.





- 1 The lobby will open directly onto the quad.
- 2 The multipurpose room will be able to be divided to host multiple functions simultaneously, or single large events with retractable seating.

## Performing Arts Center







- 1 The new food service facility is located along the pedestrian promenade connecting to the new quad. "Spider leg" columns provide a visual connection to the historical colonnade of the original school.
- 2 The student dining room utilizes large light wells and a variety of materials, textures, and colors to create a lively dining environment.

**Food Service and Dining Building**

