



**Partnership with**

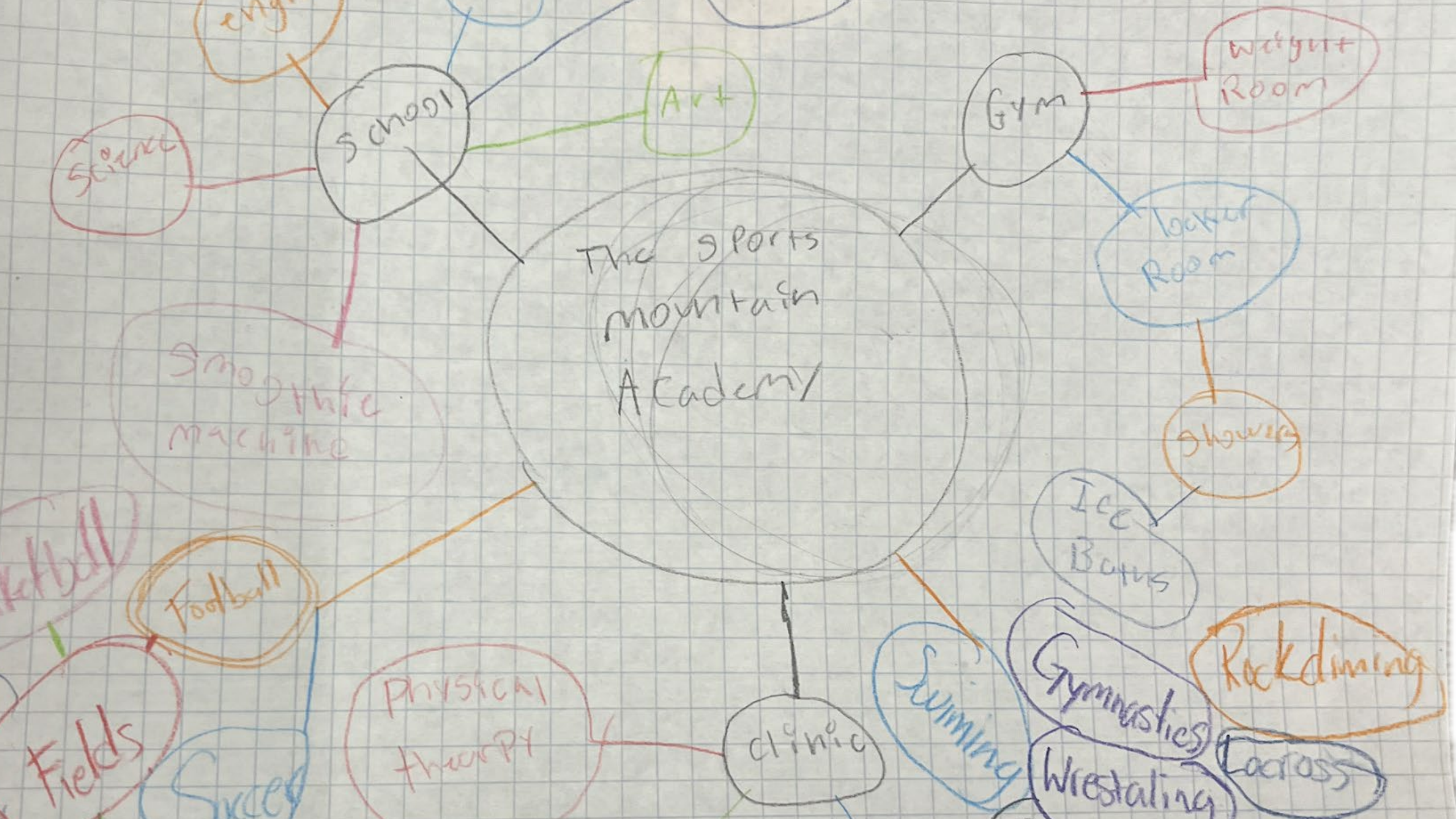
**DR. MARTIN LUTHER KING JR.  
EARLY COLLEGE**

Denver, CO

**Mentor Group:**





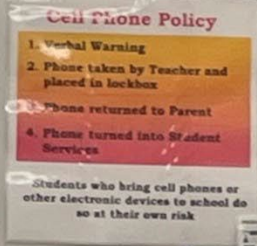
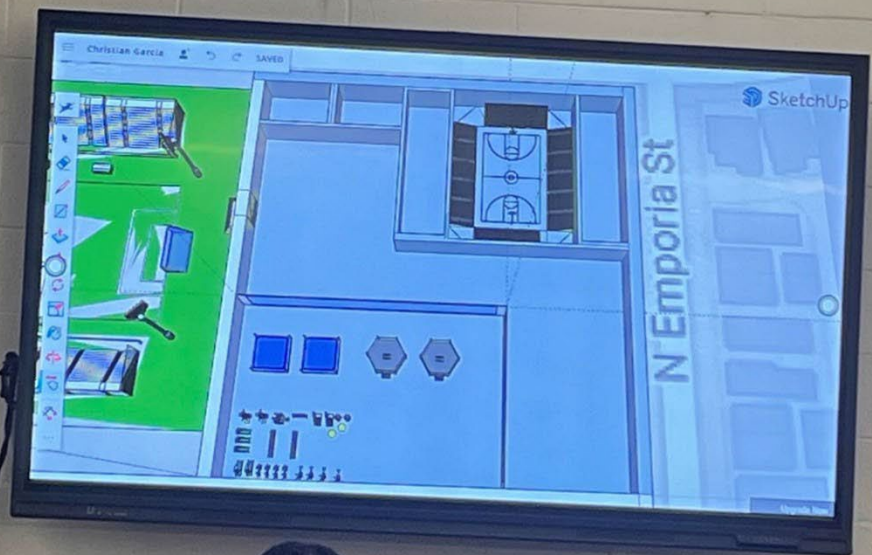
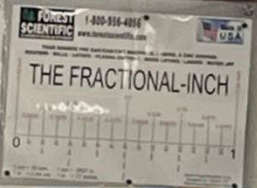
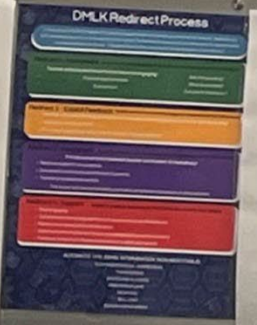
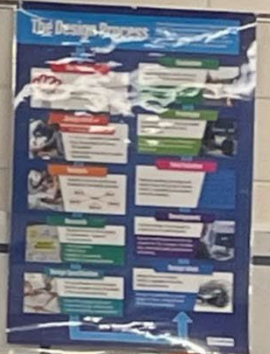
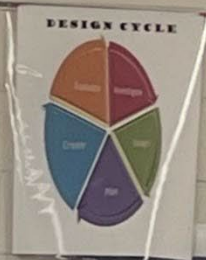
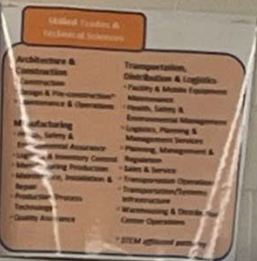
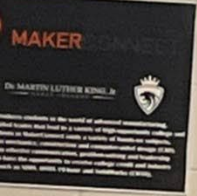




# WHAT WILL A SCHOOL/CAMPUS NEED TO ACHIEVE EFFECTIVE LEARNING, INCLUSION, AND INNOVATION?

In order for a school to achieve effective learning, and inclusion, there needs to be a suitable environment for the students. For example, the environment needs to be welcoming, but also strict so that the students can get to where they want/need to be. The school also needs to have tutors available for student athletes whenever they need them.





Teacher in a purple hoodie pointing at the screen.

Student in a white shirt standing near the screen.

Students sitting at desks in the classroom, viewed from behind.

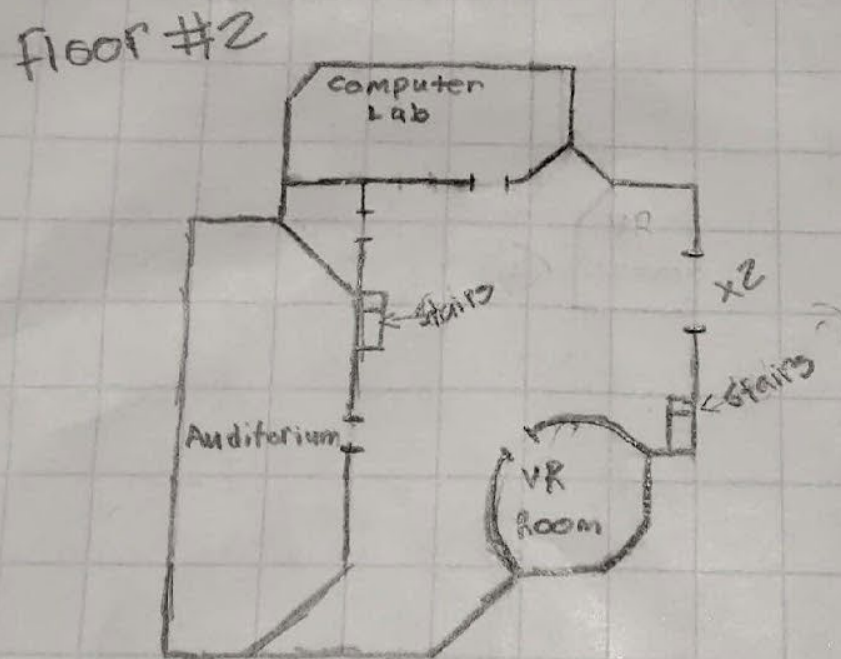
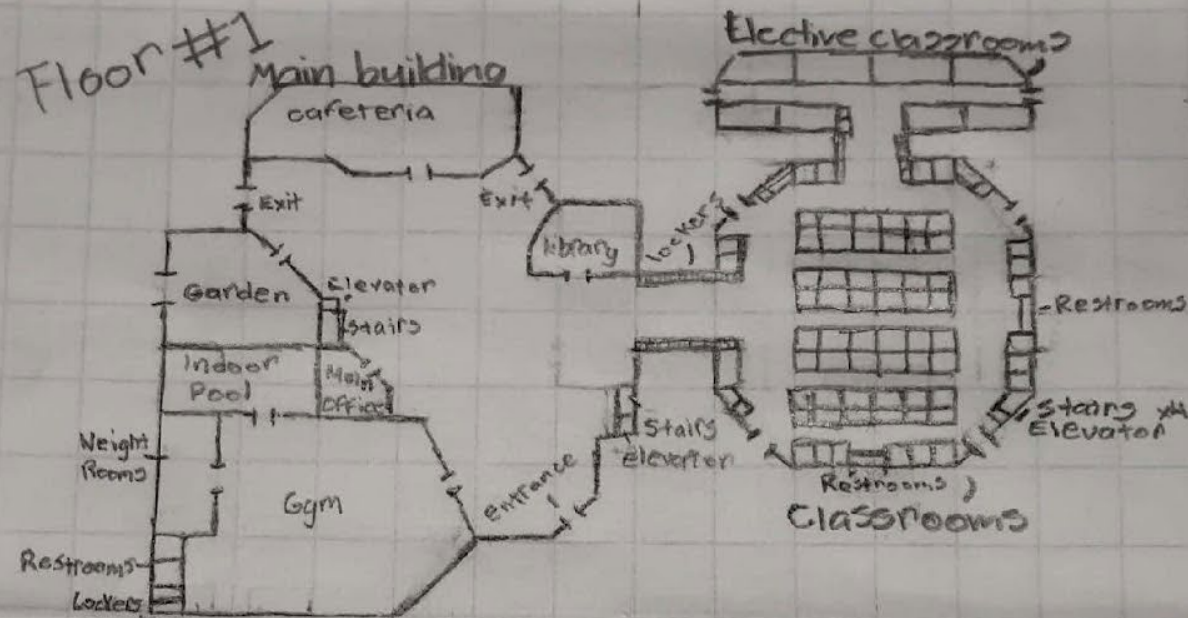
# Design Brief

We started off by deciding on what our school's focus would be. We did research on what students wanted to see in the schools they attend and we started thinking about how we could incorporate their ideas into our school. The next step was to gather information on how we were going to accomplish this. Once we knew what we wanted to do, we began to make potential designs for our school and made changes to them until we felt like we had a fitting layout for the site we were given. We then used SketchUp to create a 3D model of the school. The final step was to create a brand that was unique to our school.



# School Site Scaling

## Final Layout



# School Model

