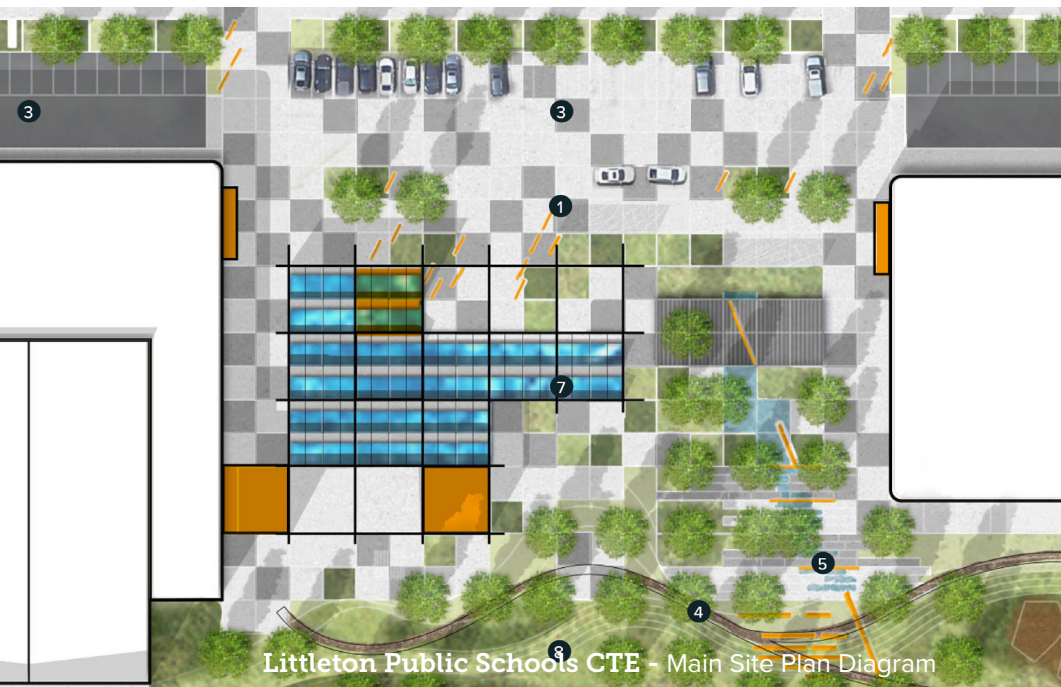




Littleton Public Schools CTE - Main Exterior View



Littleton Public Schools CTE - Main Site Plan Diagram



Littleton Public Schools CTE - Interactive Stream and Plaza



# LITTLETON PUBLIC SCHOOLS CTE

## ROCKIES DESIGN AWARD

Littleton, Colorado

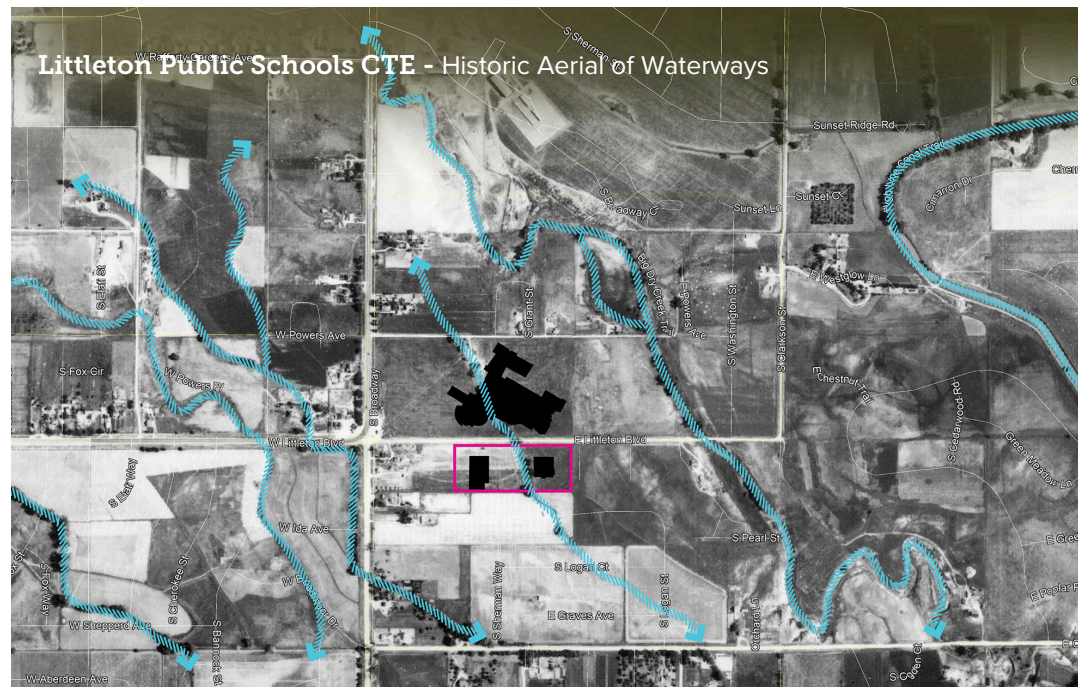
Littleton Public Schools CTE outdoor design concept supports both formal and informal learning areas, while also connecting students to Littleton’s broader historical and cultural context.

Built around a central “Pathways Plaza,” the new school will feature various outdoor learning rooms that adapt to the needs of each individual program and serve as community spaces to showcase technology advancements or cultural celebrations. Unique design elements include an integrated water feature, overhead canopy structure, arrays of solar panels, an outdoor construction yard, and multiple flexible outdoor learning spaces.

Littleton Public Schools CTE is also designed to educate and showcase sustainable techniques including locally resourced or recycled materials, climate sensitive/native plant species that contribute to the re-establishment of natural habitats and require less volume of water and maintenance, more permeable surfaces, greenhouse or farm-to-table program techniques, and potential use of stormwater run-off recycle systems, etc.



Littleton Public Schools CTE - Flexible Plaza



Littleton Public Schools CTE - Historic Aerial of Waterways



Littleton Public Schools CTE - Flexible Class and Build Space