

- 1 WIDENING THE AUDIENCE
- 2 CLEAR COMMUNICATION
- 3 CREATING RELEVANT AND ORIGINAL CONTENT

The Intersection

December 2020

FROM THE CHAPTER PRESIDENT

Dear fellow Chapter members,

I hope all of you have managed to figure out a way to navigate this “lockdown” holiday season in some way that will bring you and your family joy and hope. 2020 has been a one for the record books, for sure. Despite it all, we are pretty proud of what the A4LE membership has been able to pull-off this year, even in this herky-jerky pandemic mode. We committed early to pivot all of our activities to “virtual” and were



John Diffenderfer
Aedis Architects
 President

able to convene three highly successful webinar events, attended by a few dozen at first, and over a hundred by the end, members and non-members.

To maintain our momentum in 2021, we will challenge ourselves (I mean, all of us!) to dive deeper into the intersection of learning and place, and what this means to our stakeholders—the educators, the students, and the administrators—and to hear the voices of our chapter’s most vulnerable and disenfranchised communities. This pandemic has forced everyone to reflect on the status-quo and reinvent accepted processes. We look forward to developing new insights together and sharing them out over the next twelve months through virtual events, surveys, and social media (watch for LinkedIn posts!). Fingers crossed that soon we’ll be able to meet in-person soon!

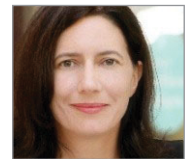
MEET YOUR 2021 LEADERS



Josh Niederman
One Workplace
 President-Elect



Sherry Sajadpour
JKAE
 Past-President



Mary Ruppenthal
Gelfand Partners
 Secretary



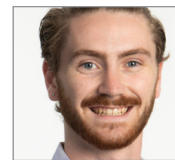
Ryan Tognetti
Flint Builders
 Treasurer/Sponsorship Committee Chair



Emily Rae
Student UCB
 Member at Large



Bill Heinicke
Elk Grove USD
 Member at Large,
 Membership Committee Co-Chair



Liam Hanlon
Aedis Architects
 Member at Large



Teri Jamison
Rainforth Grau Architects
 Membership Committee Co-Chair



Paul Nadeau
Gilroy USD
 Events/Programs Committee Chair



Marsha Perry Taras
Roebbelen Contracting
 SchoolsNEXT Committee Chair

ANNOUNCEMENTS

THERE IS STILL TIME

to register your school and project for 2021 submittals for the SchoolsNEXT Design Competition

REGIONAL CONFERENCE

This was rescheduled from 2020 to April 2021. Watch for confirmations to come

FOR YOUR CALENDAR

JANUARY

Strategic Membership and Network Engagement
 TBD January 2021

SEPTEMBER - MARCH

SchoolsNEXT Design Competition Mentor and Sponsorship Sign-Up is ongoing

MARCH

Submit Regional SchoolsNEXT Competition entries. There’s still time to register your school’s team!