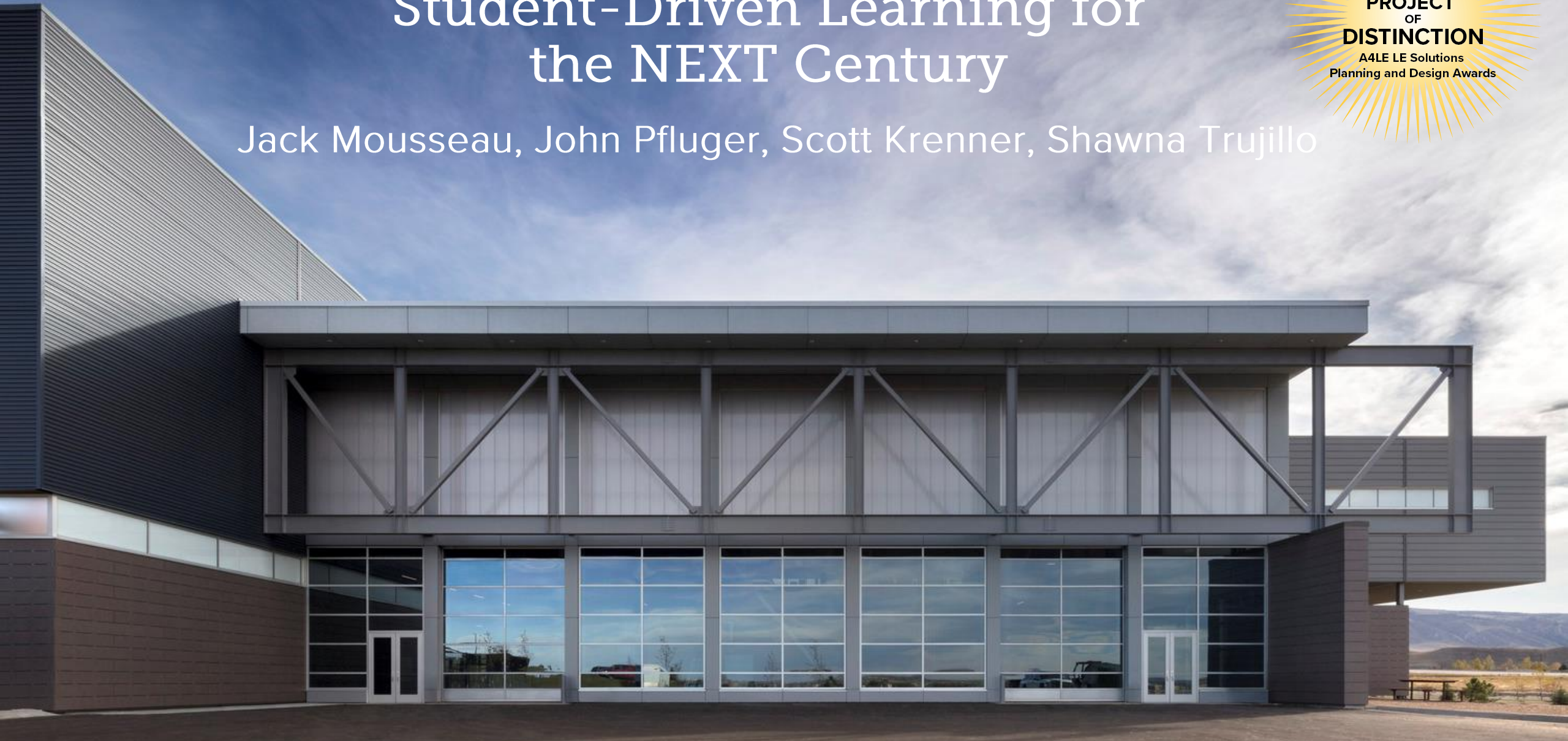


The Innovation Campus: Student-Driven Learning for the NEXT Century

Jack Mousseau, John Pfluger, Scott Krenner, Shawna Trujillo

2017
PROJECT
OF
DISTINCTION
A4LE LE Solutions
Planning and Design Awards





MOA ARCHITECTURE

Jack Mousseau, AIA
Principal In Charge

Nationally recognized design team leader on ECE-12 projects and former president of Rocky Mountain Chapter A4LE, Jack leads MOA Architecture's design efforts with over 30-years of educational design experience.



CUNINGHAM G R O U P

John Pfluger, AIA
Design Principal

Nationally recognized Design Principal and thought leader for Cuningham Group's Education Studio, John has worked with Cuningham Group for more than 30 years, and has focused his career on creating uplifting and innovative design solutions for Pk-12 learning environments and developing a ground breaking co-creative design process.



CUNINGHAM G R O U P

Scott Krenner, AIA
Lead Project Architect

A Senior Associate and Market Group Design Leader for Cuningham Group's Grow Market Group. He served as Project Architect and Senior Designer for Pathways Innovation Center / Roosevelt High School. Scott has worked with Cuningham Group for more than 13 years, six of which he has focused on creating innovative design solutions for Pk-12 schools.



Shawna Trujillo
*Roosevelt High School
Principal*

Shawna has dedicated the last 23 years working as a teacher and principal. She worked alongside the design team to design a building that serves as a home for innovative, 21st century learning.

(Link to video)

<https://vimeo.com/240388455>

transform

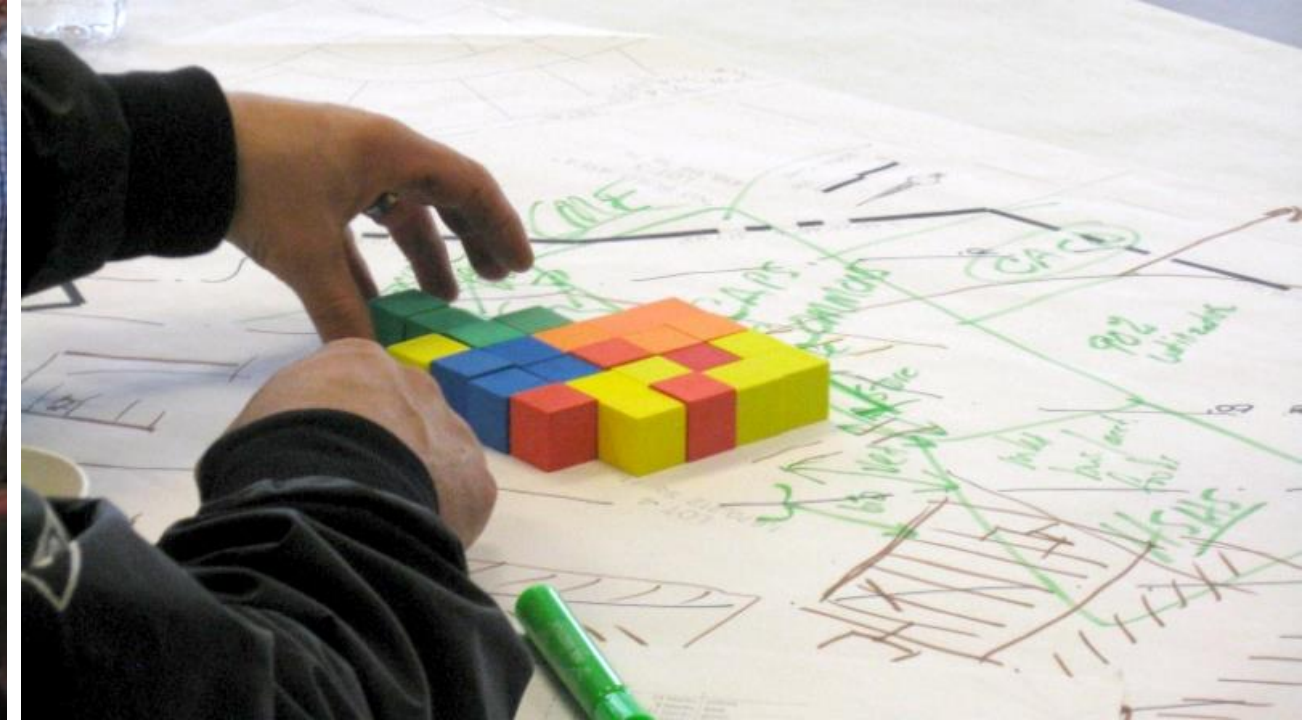
the high school experience



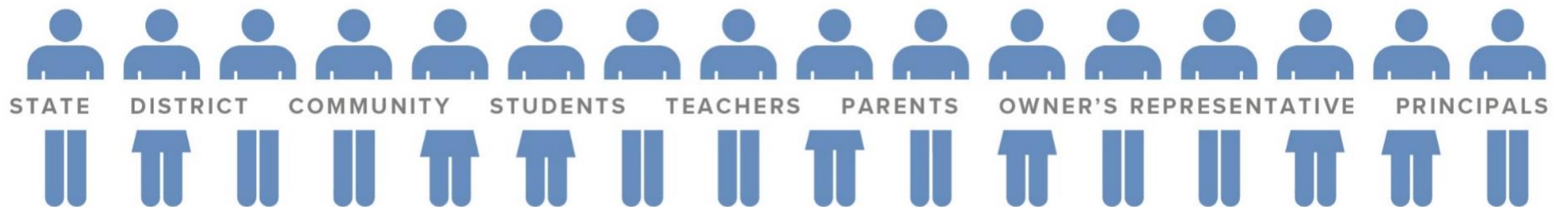
PATHWAYS

NATRONA
COUNTY SCHOOLS

www.ncsdtransform.org



PRE-PLANNING: FOCUSING ON THE STAKEHOLDERS



Project Beliefs for Natrona County Schools' Path to 2025

*“To strengthen our
community and our
economy we must instill a
creative, innovative and
even entrepreneurial
spirit in our youth.”*



Profile of a 2025 Graduate:

- Independent Lifelong Learning
- Digital Age Literacy
- Inventive Thinking
- Effective Communications
- High Productivity
- Healthful Living
- Stewardship



A Community Vision

“Education is designed to prepare children for a distant and unbelievable future. Our strategy is to create learning environments that encourage creativity, engaging activities and insightful dialogue. These spaces would allow for the advanced technology necessary to prepare children for success in a world we cannot yet imagine.”

Charter for Natrona County High Schools, resulting from a visioning process with community members, students, parents and district administrators.

“ To change. To morph. To innovate.
To lead by design. To pioneer. To
modernize. To TRANSFORM. ”



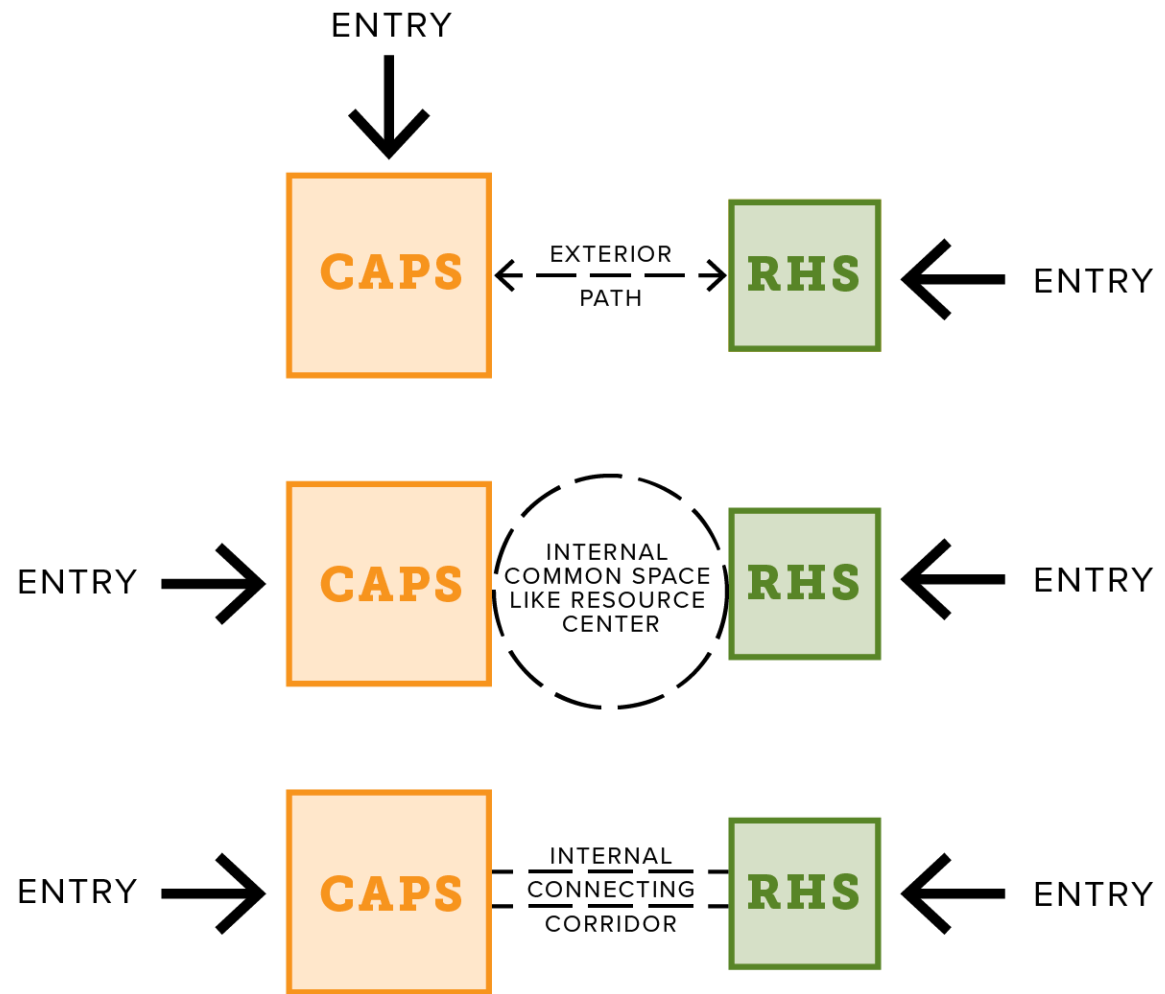


Guiding Principals

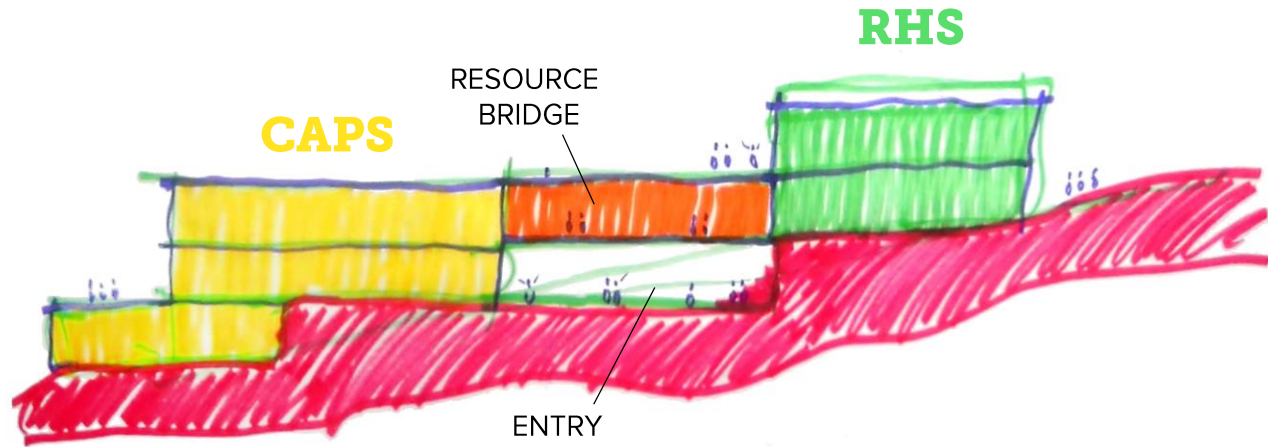
- 1. Collaborative Learning Communities**
- 2. Inventive Learning Settings**
- 3. Meaningful Community Partnerships**
- 4. A Culture of Empowerment**

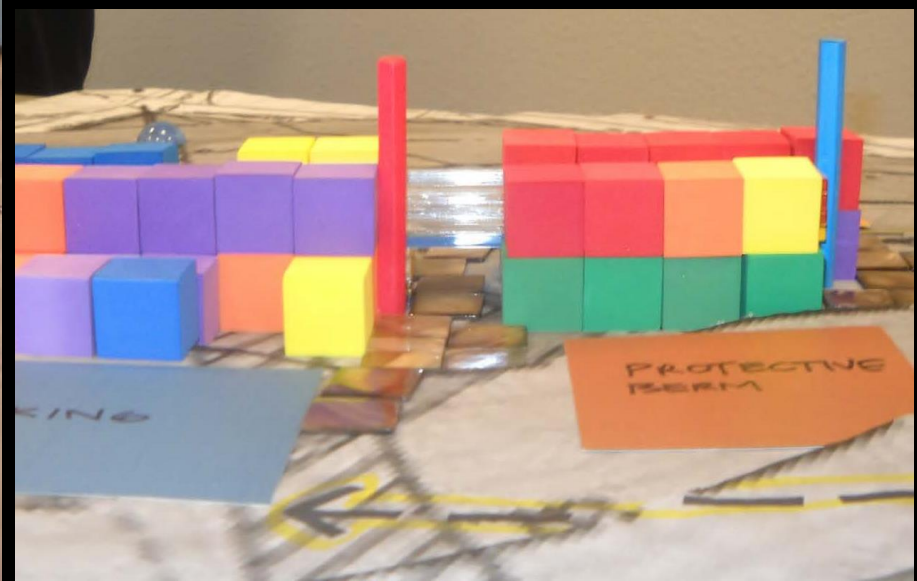


RHS / CAPS RELATIONSHIP



CONNECTION OPTIONS





Roosevelt
High
School

Kelly
Walsh
High
School

Natrona
High
School

PATHWAYS INNOVATION CENTER



Pathways Innovation Center

Individualized, career-focused learning to prepare students for the 21st Century. A new educational academy.

The facility was designed to serve 500 students at any given time in half-day programs.





ACME

Architecture,
Construction,
Manufacturing and
Engineering

ARCHITECTURE, CONSTRUCTION, MANUFACTURING AND ENGINEERING

Woodworking

Welding

Engineering

Robotics

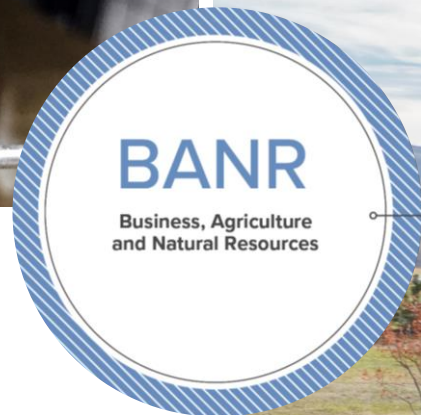
Auto Service

Cabinetmaking

Robotics Engineering

Electronics/Electricity

Biotechnology



BUSINESS, AGRICULTURE AND NATURAL RESOURCES

Business

Marketing

Sports & Entertainment

Nutrition

Food Service

Culinary Arts

Agriculture

Natural Resources

Veterinary Science

Horticulture

Food Science





CREATIVE ARTS, COMMUNICATION AND DESIGN

- | | |
|-----------------------|---------------------|
| Production Arts | Computer-Aided Arts |
| Visual Arts | Web Design |
| Digital Media Arts | Graphic Design |
| Color Theory & Design | Film/TV Production |
| Photography | Graphic Technology |
| Sculpture | |





HEALTH SCIENCES AND HUMAN SERVICES

Caregiving

Early Childhood

Development

Nursing

Pharmacology

Sports Medicine

Pre-Occupational

Therapy

Pre-Physical Therapy

Fire Science

English/Language Arts

Psychology

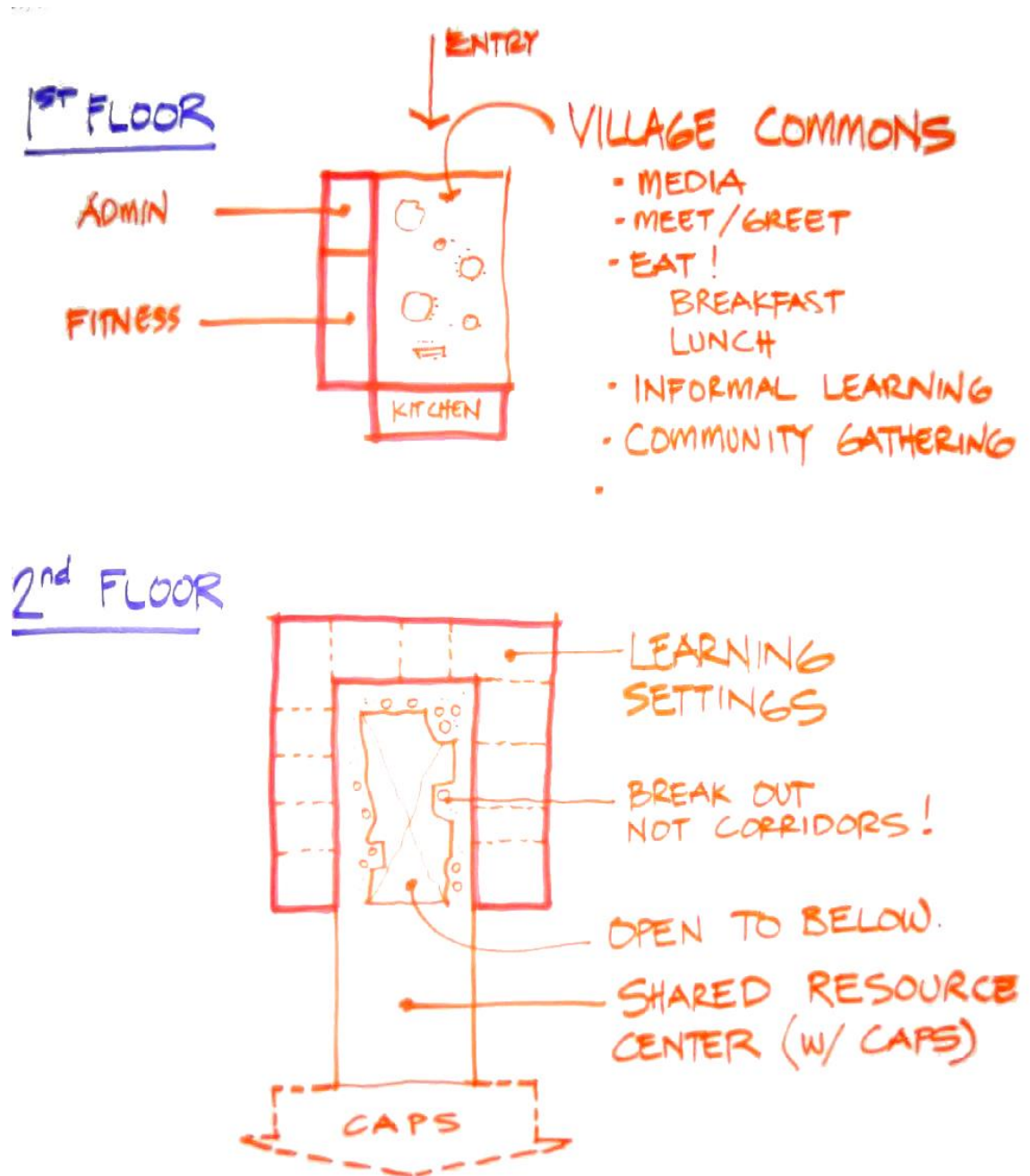
Sociology



Roosevelt High School

The district's alternative high school features a wellness-based curriculum.

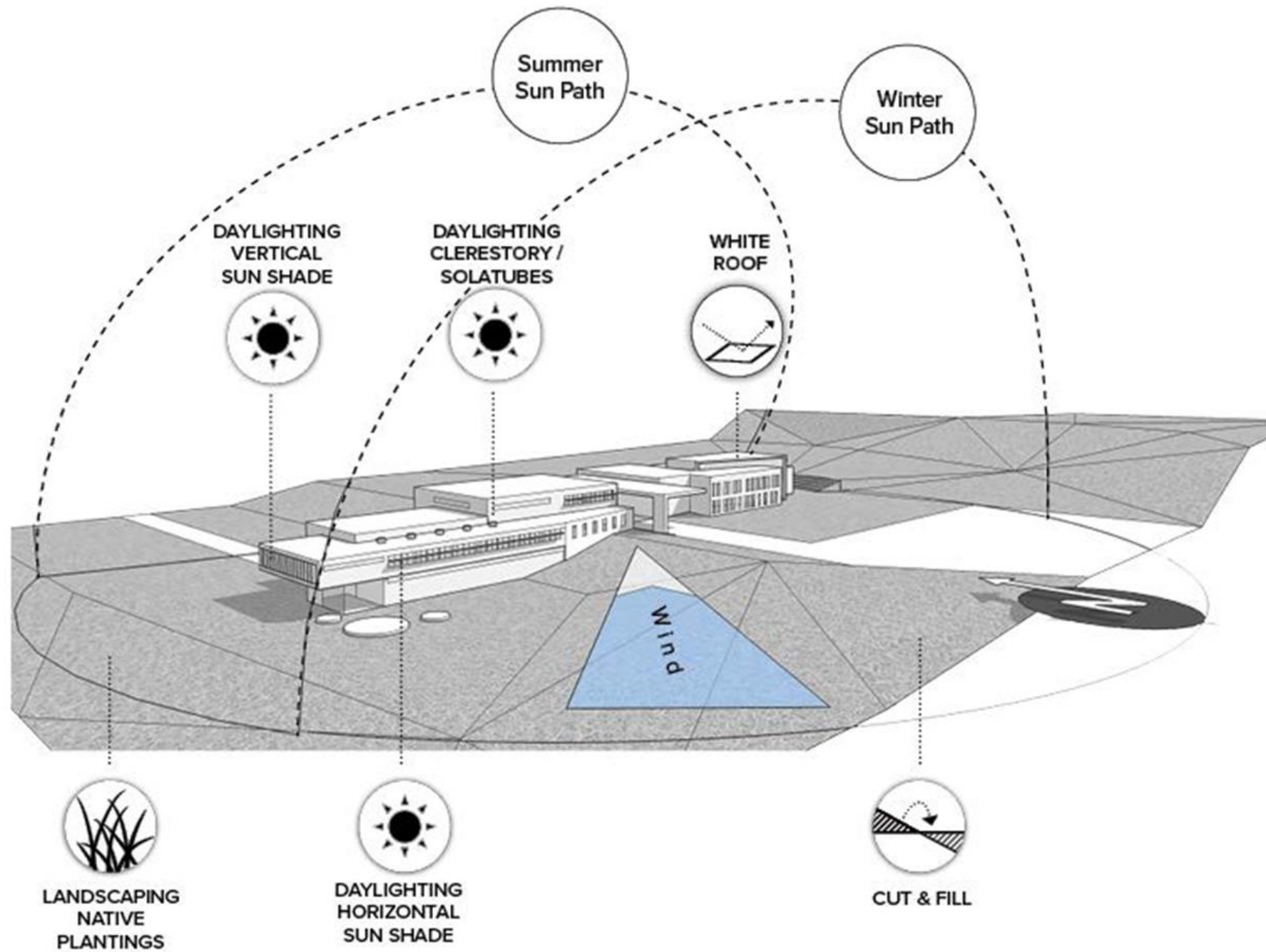
The alternative high school is committed to engaging real-world learning through strong relationships, high expectations and a safe, structured learning environment.





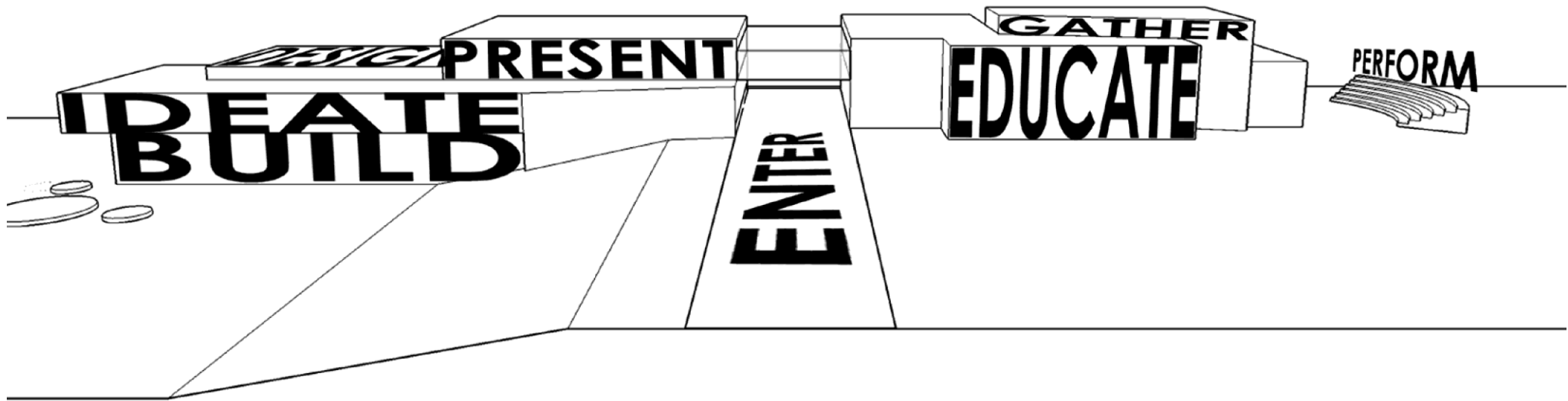
SITE

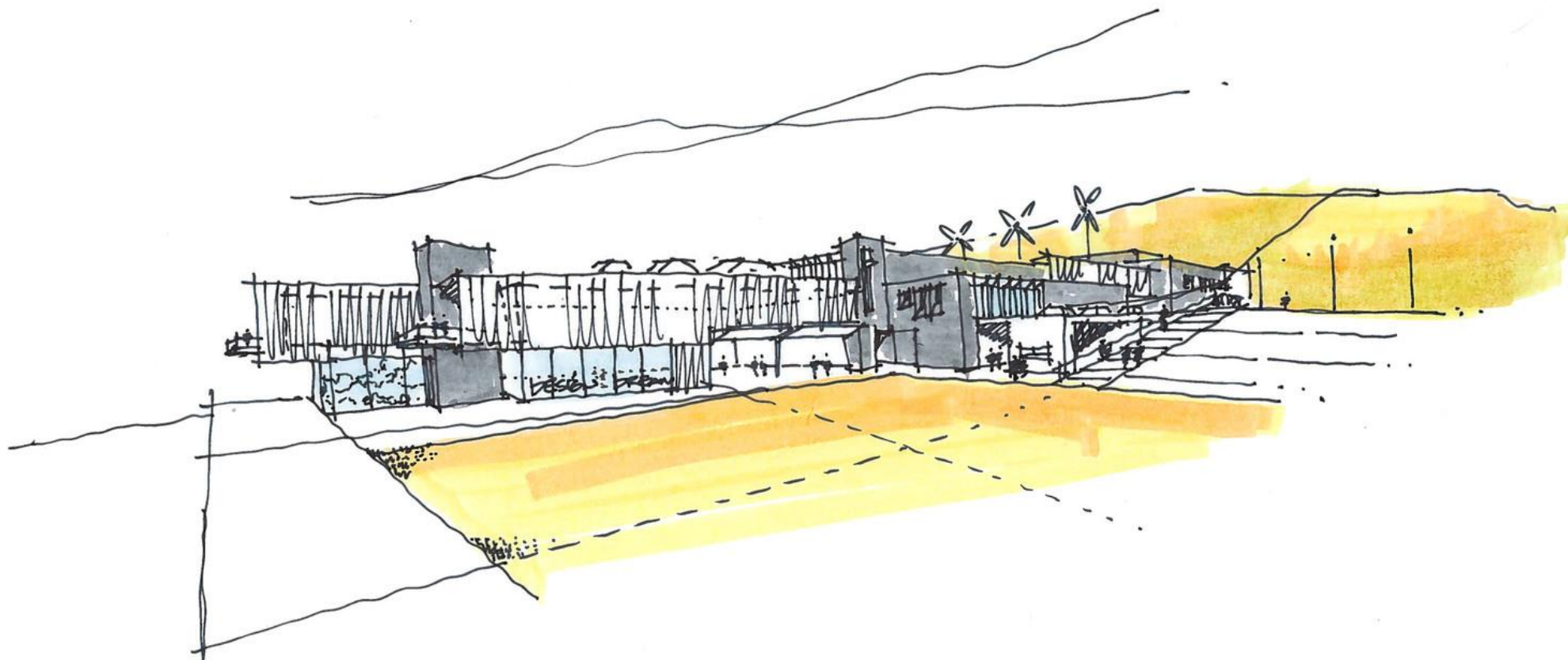






PATHWAYS + ROOSEVELT HS





Entry lower view



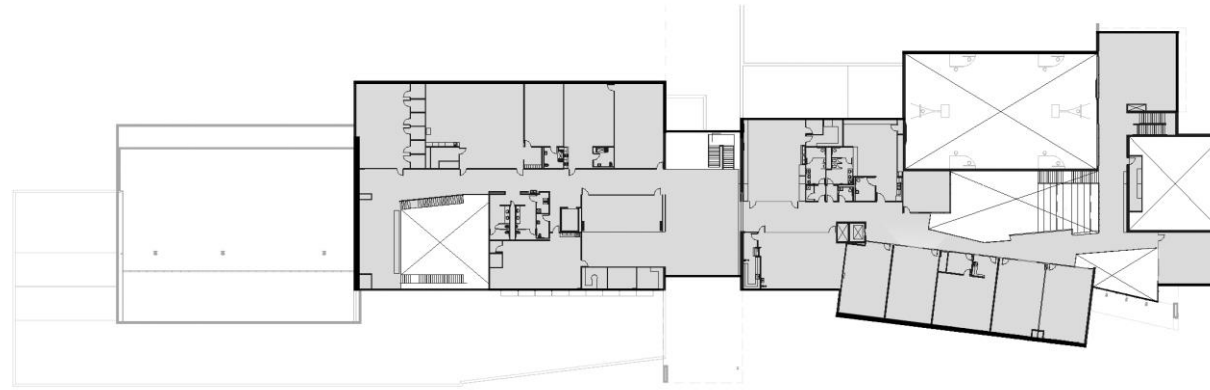




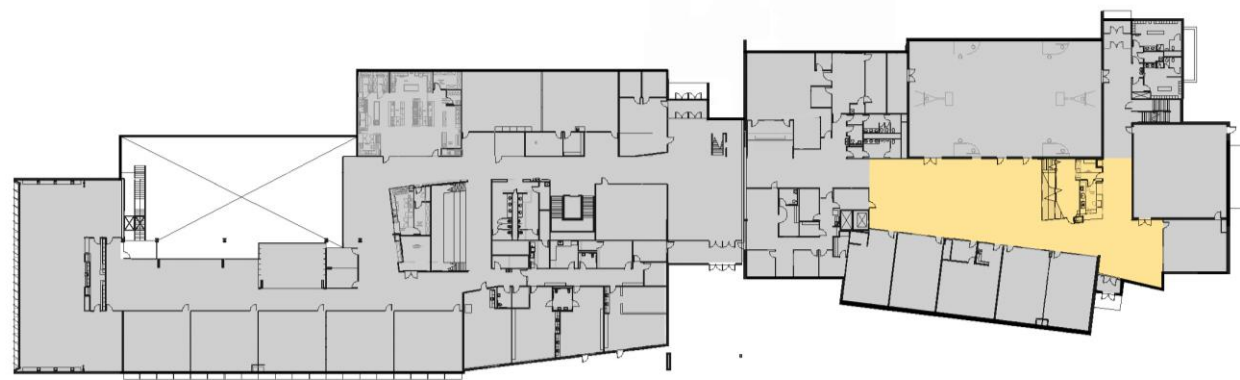




Upper Level



Main Level



Lower Level





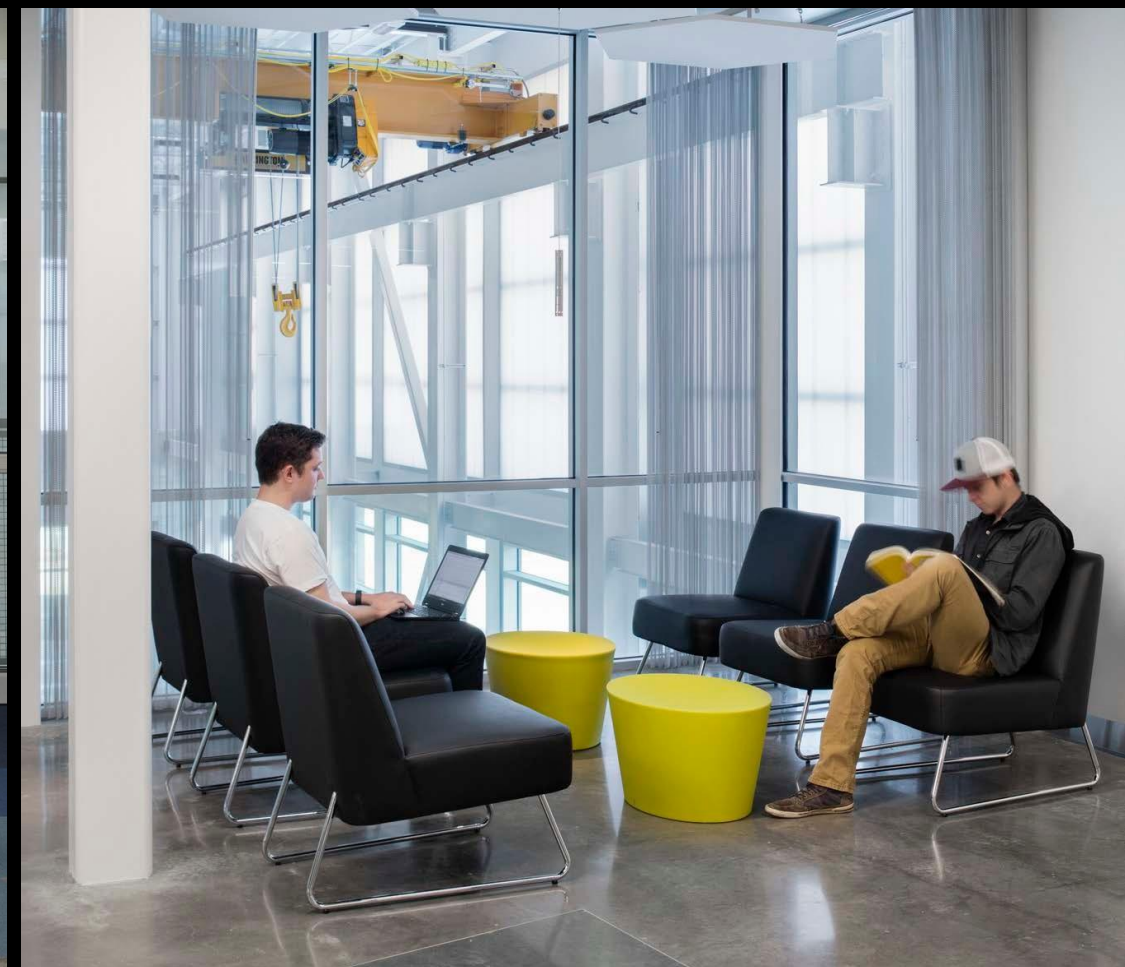




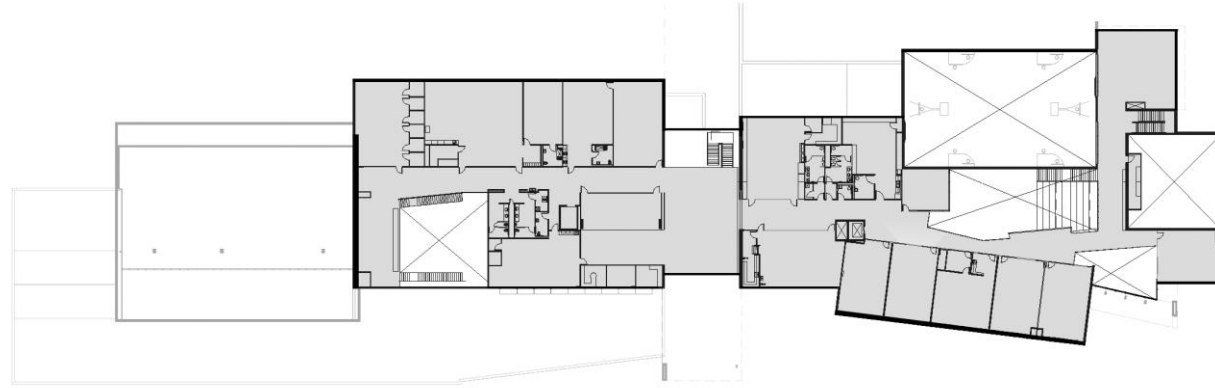




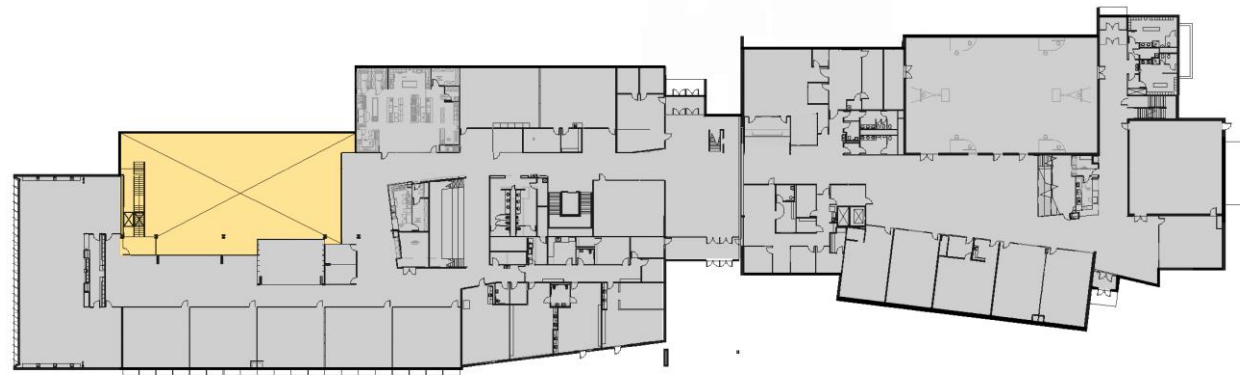




Upper Level

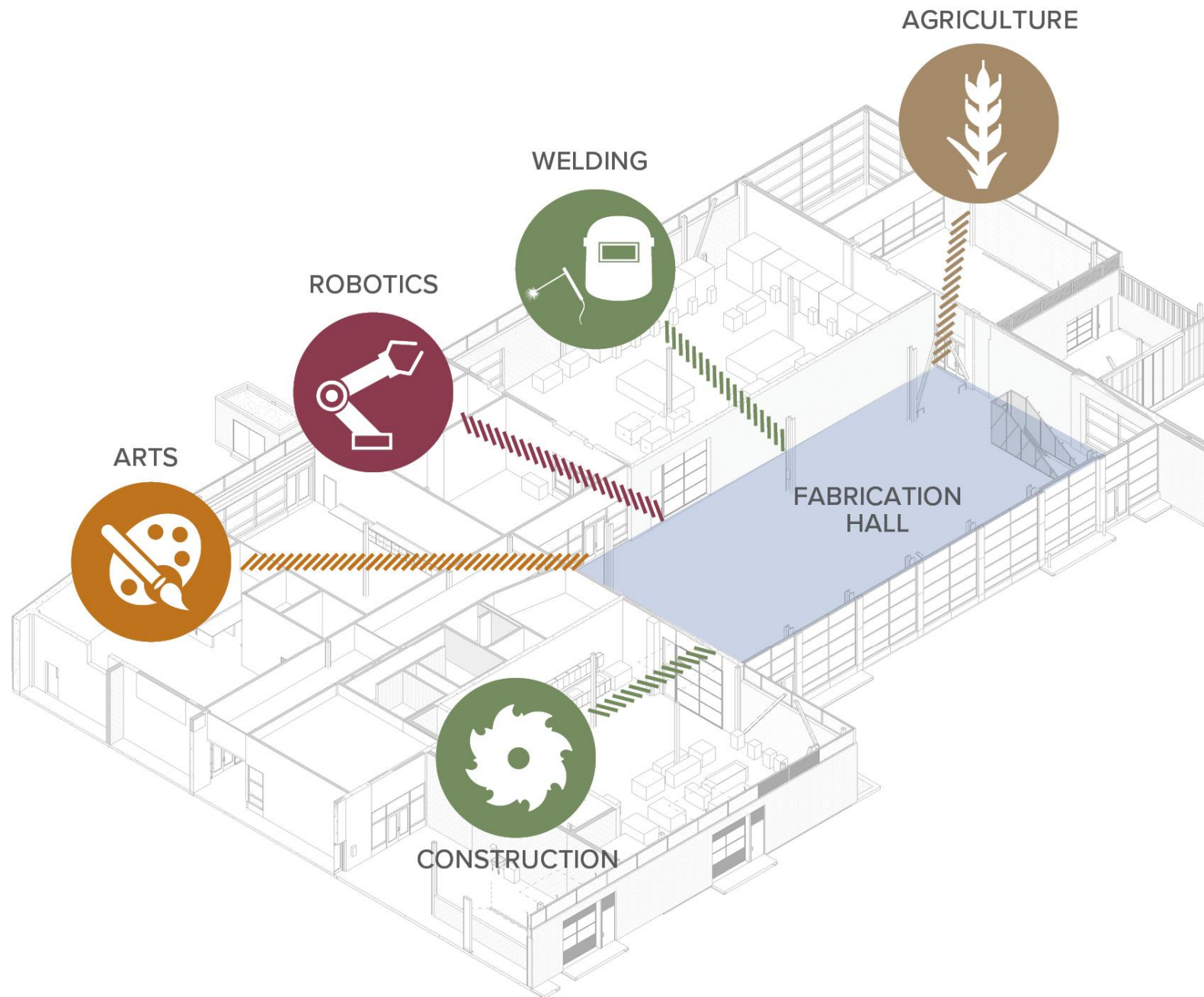


Main Level



Lower Level

















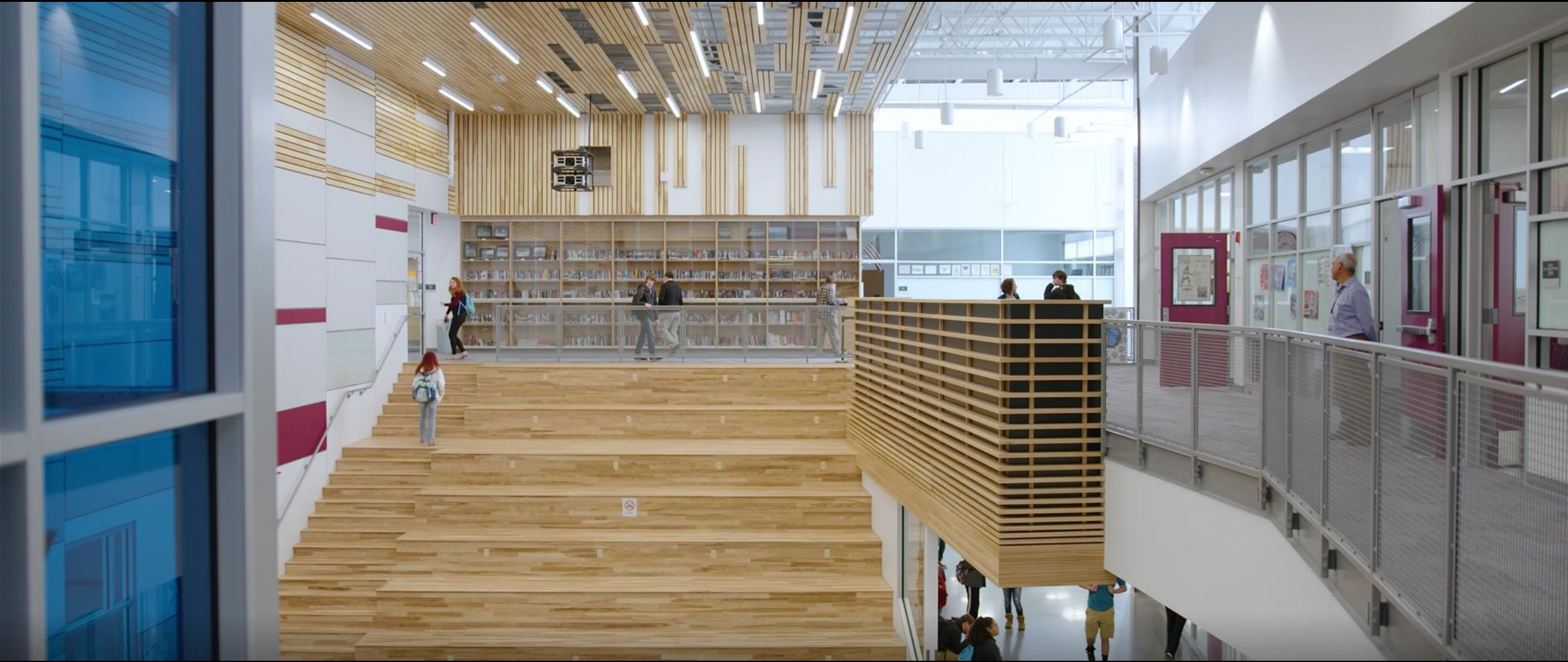


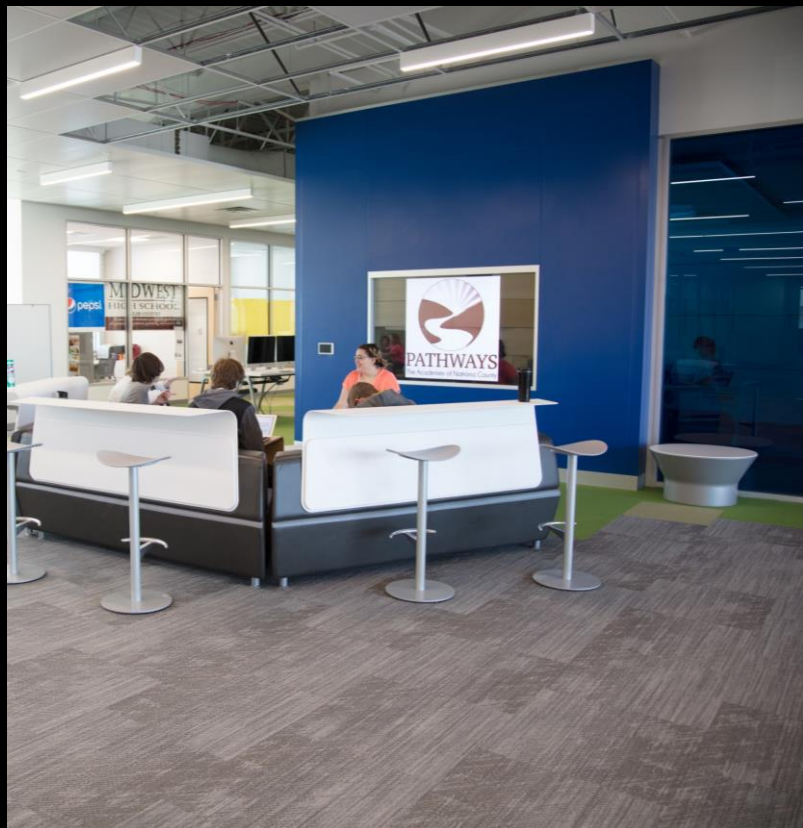












COLLABORATIVE LEARNING





SPECIALIZED LEARNING





STUDENT EMPOWERMENT





Welding students take

AWS

Certification Test

Automotive Students take

ASE

Certification Test

Nursing Students take

CNA

Certification Test



ELEVATION OF TEACHING AND LEARNING





MOA ARCHITECTURE

moaarch.com

Jack Mousseau, AIA
Principal In Charge
jmosseau@moaarch.com



CUNINGHAM
G R O U P

cunningham.com

Scott Krenner, AIA
Lead Project Architect
skrenner@cunningham.com



NATRONA COUNTY SCHOOLS

natronaschools.org

Shawna Trujillo
Roosevelt High School Principal
Shawna_Trujillo@natronaschools.org

