



A PLACE IN HISTORY

APPROACHES TO RENOVATION & NEW
CONSTRUCTION ON HISTORIC CAMPUSES

DEKKER
PERICH
SABATINI

ARCHITECTURE
DESIGN
INSPIRATION



JULIE WALLEISA,
AIA, LEED AP, ALEP

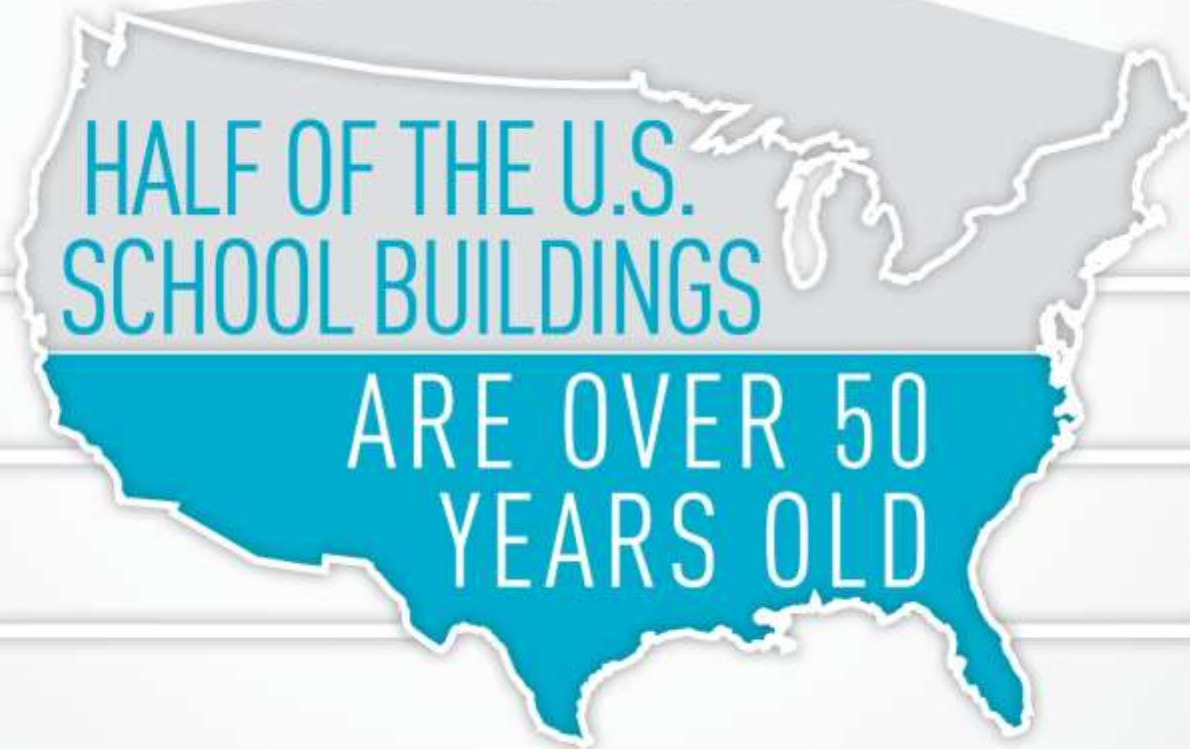
- Principal/Architect at Dekker/Perich/Sabatini
- Accredited Learning Environment Planner (ALEP)
- Focus on K-12 programming and design
- Masterplans and design projects on historic campuses



KERI STEVENSON,
AIA

- Architect at Dekker/Perich/Sabatini
- Background in historic preservation and architectural conservation
- Focus on K-12 schools and higher education facilities with historic character

BALANCING COMPETING DEMANDS



HISTORIC LEGACY / IDENTITY

ENROLLMENT CHANGES

COMMUNITY PRIDE

EDUCATIONAL MISSION

BUDGET CONSTRAINTS

TECHNOLOGY CHANGES



NEW MEXICO
SCHOOL
FOR
THE **DEAF**

STATEWIDE AND RESIDENTIAL



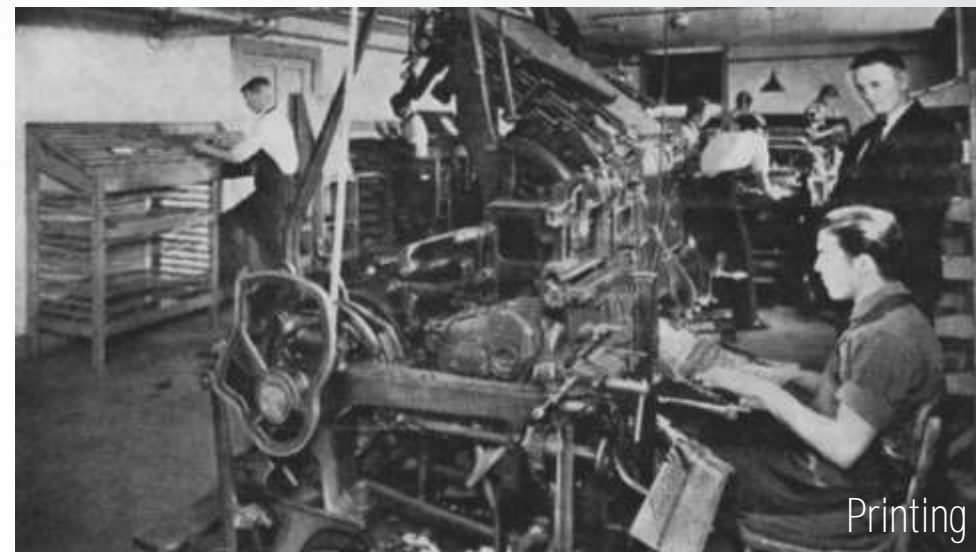
CHANGE TO EVOLUTION OF DEAF EDUCATION



Education has changed a lot over the past 125 years

Deaf education has been completely transformed

CHANGE TO EVOLUTION OF DEAF EDUCATION



CHANGE TO EVOLUTION OF DEAF EDUCATION



Marian Meyer. "A Century of Progress: History of the New Mexico School for the Deaf."

CHANGE TO EVOLUTION OF DEAF EDUCATION





NMSD STREETScape - CERRILLOS ROAD





Su Casa magazine



Old House online Feb. 18, 2013



Architectural Styles of America and Europe

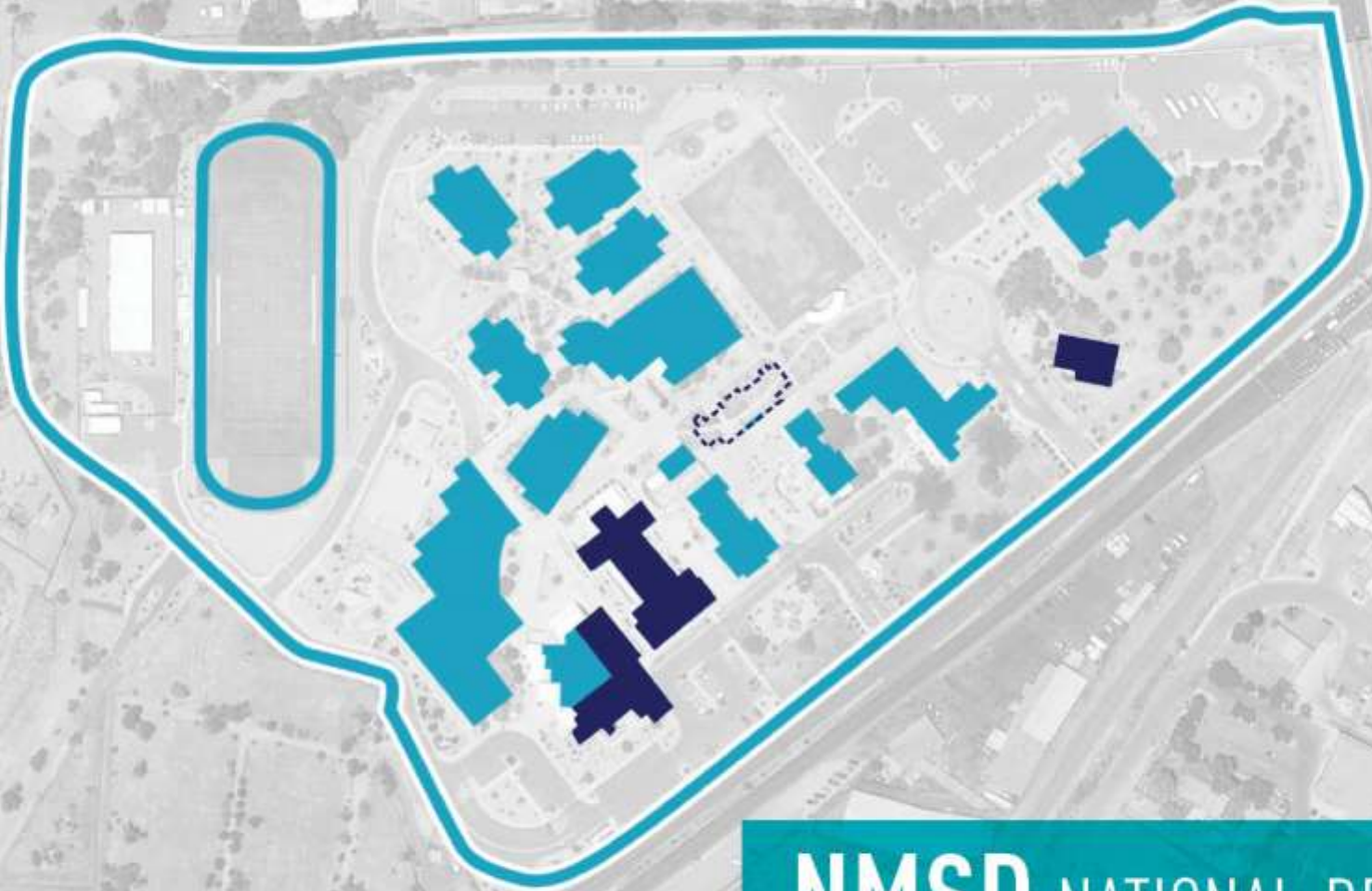


Einar Einarsson Kvaran CC BY-SA 3.0,



CC BY-SA 3.0 JuliusR (RoterHesse@gmx.net), via Wikimedia Commons





NMSD NATIONAL REGISTER



Hospital

National Register of Historic Places in Santa Fe County



Connor Hall

National Register of Historic Places in Santa Fe County



Superintendent's Residence

National Register of Historic Places in Santa Fe County



Dillon Hall

National Register of Historic Places in Santa Fe County

NMSD RESTORATION



NMSD RESTORATION

Modernized classrooms



NMSD RESTORATION

Protected and restored
character of public
spaces



NMSD RESTORATION

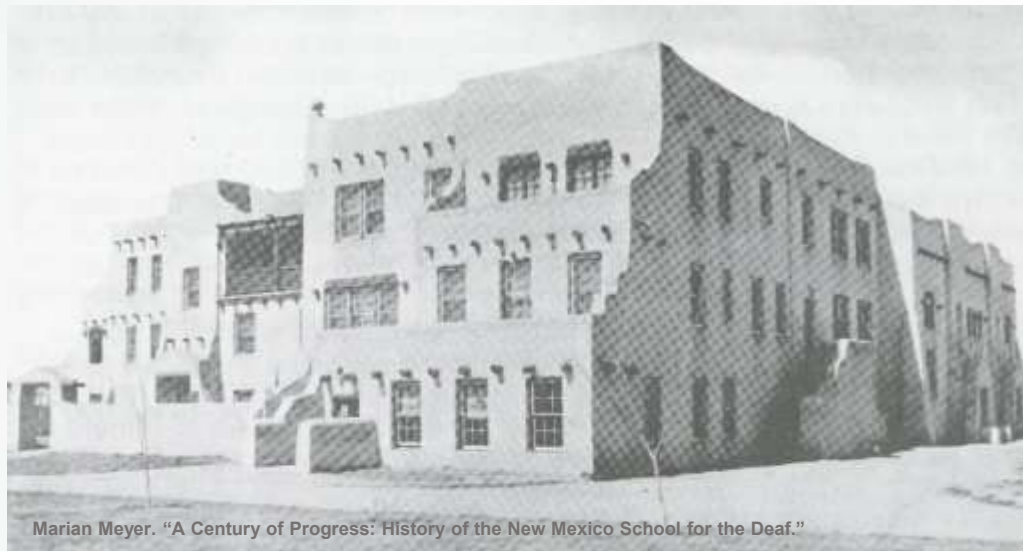
Refurbished original windows

Added storm windows

Stucco & roofing



NMSD MAJOR ADDITION



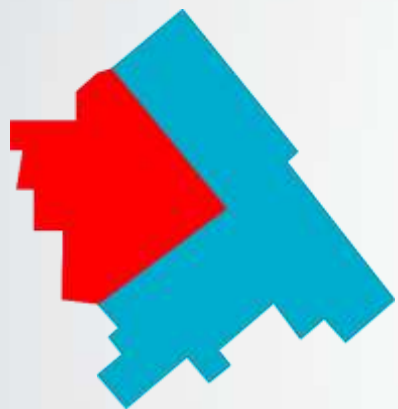
Marian Meyer. "A Century of Progress: History of the New Mexico School for the Deaf."

Original Connor Hall, 1928

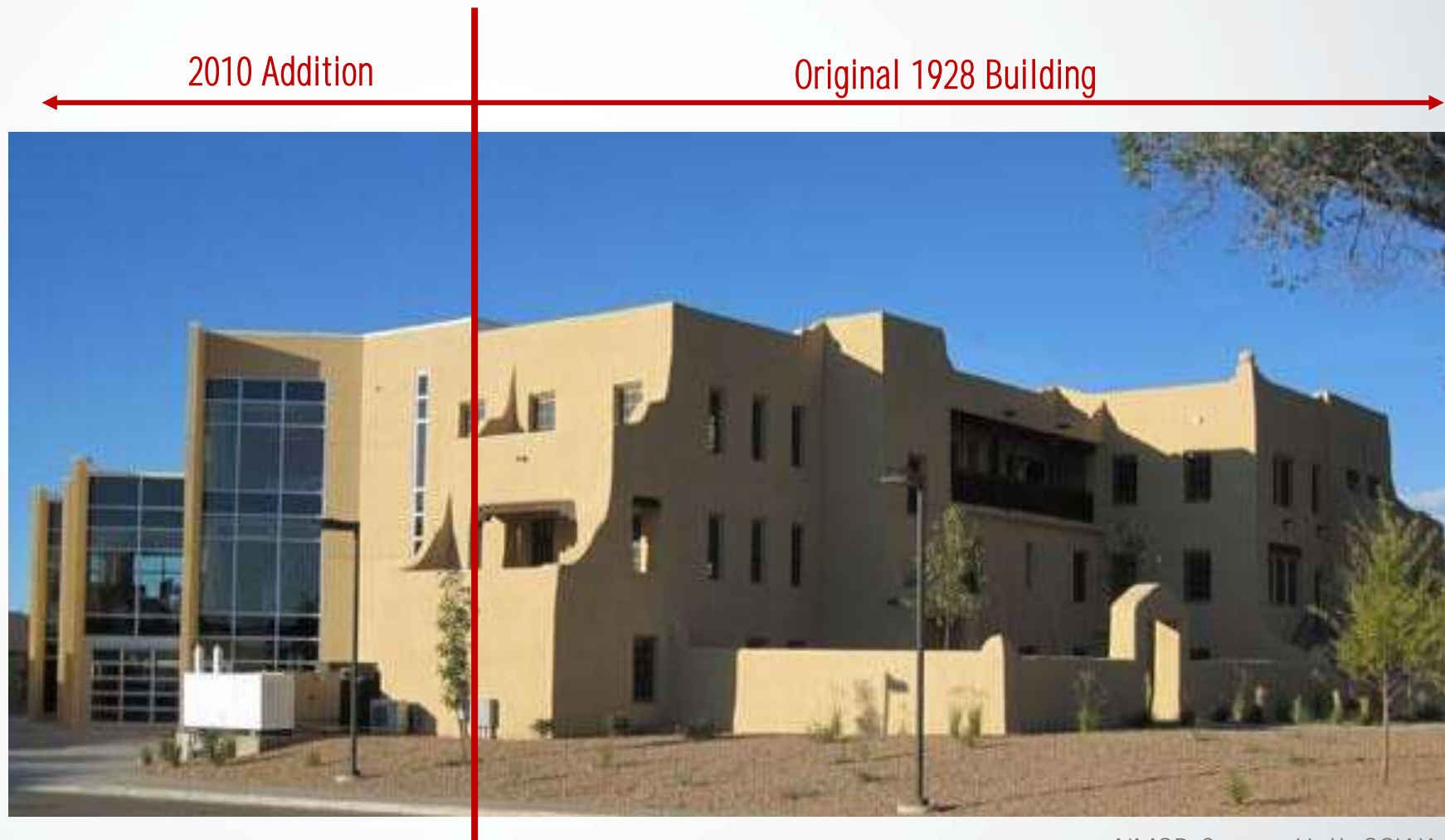


Side view of Connor Hall, 2009

NMSD MAJOR ADDITION



Addition on back/side
of building



NMSD Connor Hall, SSWA

NMSD MAJOR ADDITION

Clear distinction
between old and new



NMSD Connor Hall, SSWA

NMSD MINOR ADDITION



Rear Basement Vestibule Addition



Side Elevator & Vestibule Addition



Elevator & Vestibule Addition

NMSD MAJOR RENOVATION



Delgado Hall in 2014



Original Delgado Hall, 1913

NMSD MAJOR RENOVATION

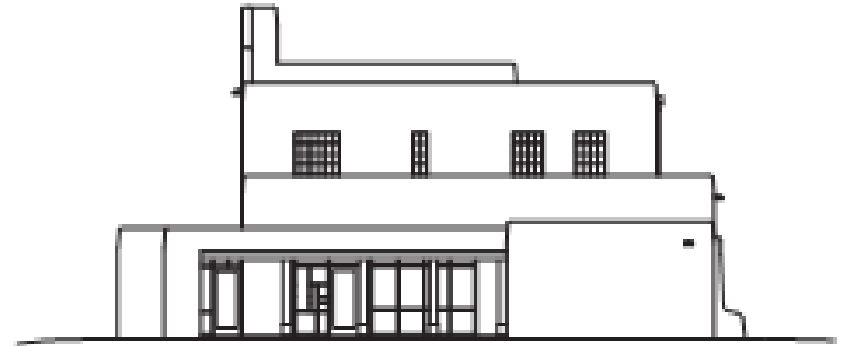


NMSD MAJOR RENOVATION

Before



EXISTING – West Elevation



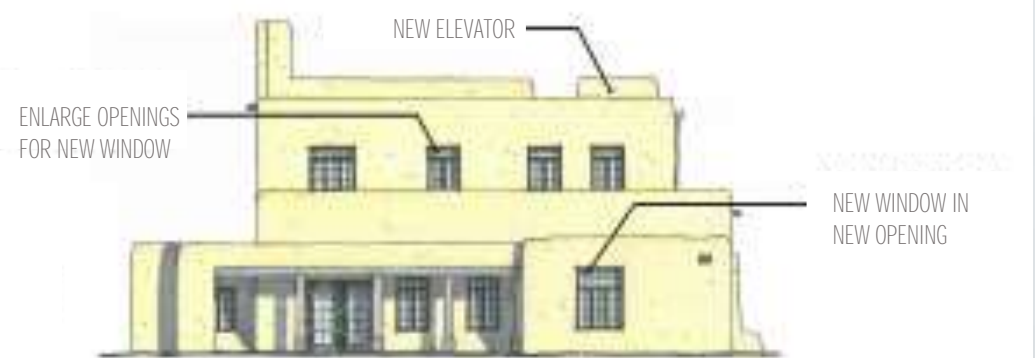
EXISTING – South Elevation

After



PROPOSED – West Elevation

ADD WALL FRAMING AND FINISHES AT NEW SMALLER WINDOWS



PROPOSED – South Elevation

NMSD MAJOR RENOVATION



Marian Meyer, "A Century of Progress : History of the New Mexico School for the Deaf."

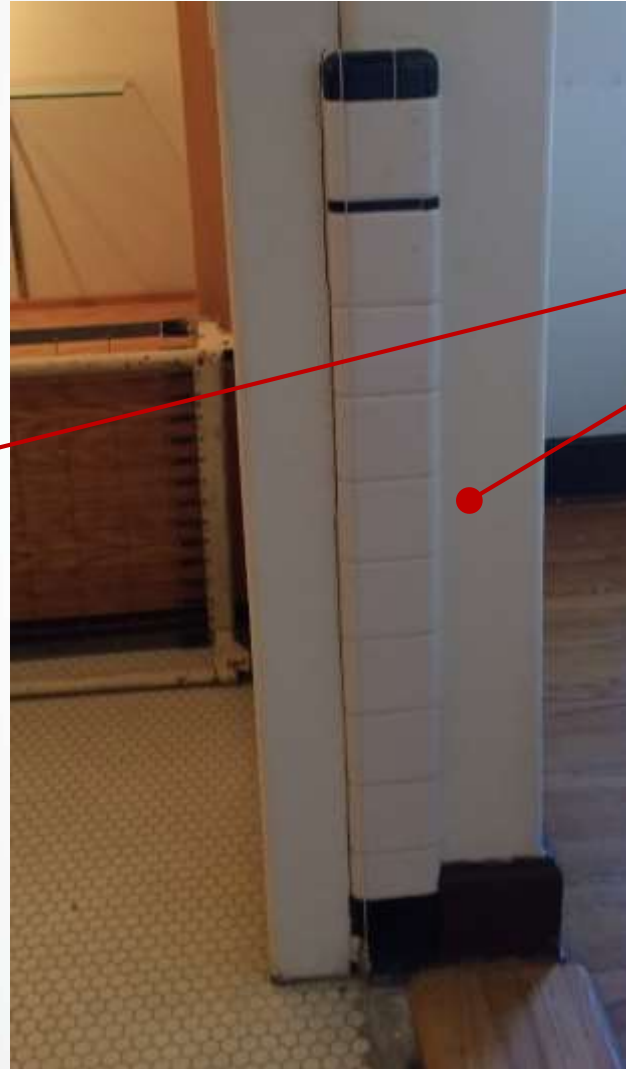
NMSD MAJOR RENOVATION



NMSD MINOR RENOVATION



NMSD MINOR RENOVATION



Original tile wainscot



NMSD NEW BUILDINGS



NMSD NEW BUILDINGS



NMSD Library
Dekker/Perich/Sabatini

NMSD DEMOLITION



NMSD DEMOLITION



NMSD DEMOLITION









WATKINS
EDUCATION CENTER



STATEWIDE AND RESIDENTIAL



TRANSFORMATION IN BLIND EDUCATION

TRADE TRAINING

ACADEMICS

SOCIALIZATION

INDIVIDUALIZED LEARNING



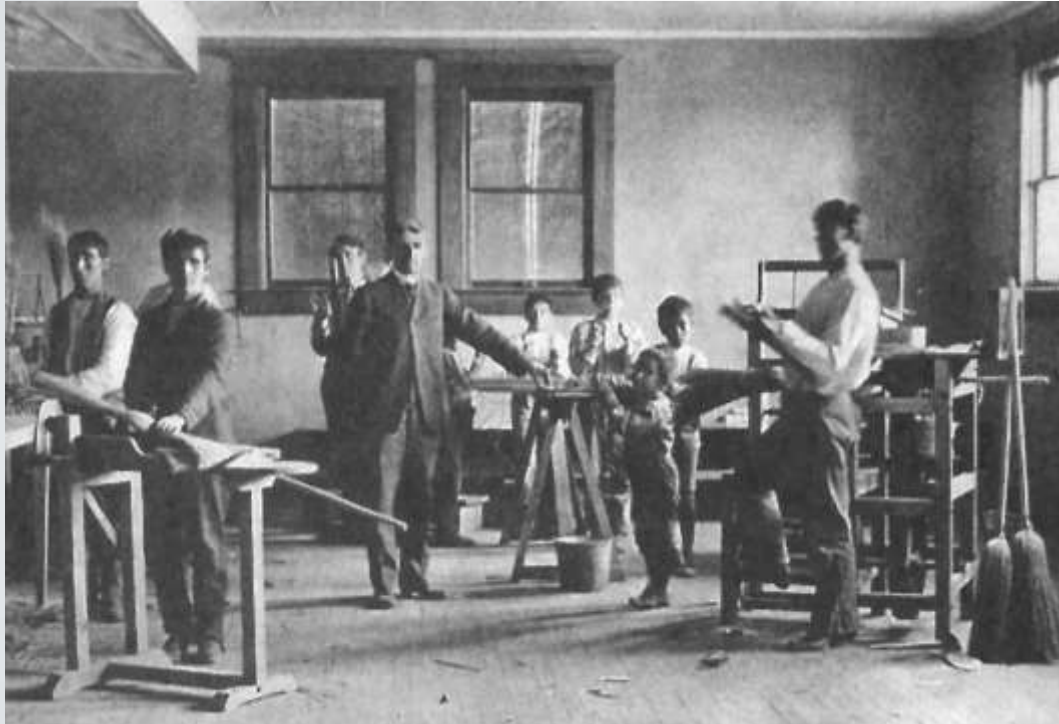
OVER 100 YEARS OF CHANGE

LONG TERM RESIDENCE
ON CAMPUS

LEAST RESTRICTIVE
ENVIRONMENT

SHORT TERM
PLACEMENTS

EARLY 1900s MOSTLY VOCATIONAL FOCUS



Beadwork, broom-making, piano tuning, agriculture, furniture making, chair caning, rugmaking, hammock making, etc.

1930s INCREASED FOCUS ON ACADEMICS



The NM School for the Blind is exactly what its name implies - a school. It is not an asylum, orphanage, home for the blind...pupils are here not to get a home, but to get an education.

- SUPERINTENDENT SMOLL

- English and Braille starting in 1st grade, arithmetic starting in 3rd grade
- Longer class periods, still issues with student ratio and age gap
- Talking books
- Little socialization, segregated by gender

1940s - 1950s INCREASED FOCUS ON SOCIALIZATION + WHOLE PERSON

Life skills – dressing, grooming, eating

Growth in athletics, music, and extracurricular programs – scouts, garden club, square dancing, theater

Transition from industrial training to shop classes



(Getting more connected to world through radio and TV technology)

1960s - 1970s RAPID CHANGE



ENROLLMENT GROWTH



INDUSTRIAL ARTS PROGRAMS



COMPUTER / ELECTRONICS AGE

1990s - 2000s ROBUST EDUCATION IN OUTDATED FACILITIES



CHANGED APPROACH



FEWER STUDENTS
ON CAMPUS

LESS TOTAL SF,
FEWER DORM ROOMS



MORE TRANSIENT
POPULATION

BETTER CAMPUS
ZONING + WAYFINDING



MORE STATEWIDE OUTREACH,
INSTRUCTIONAL MATERIALS

MORE SF FOR STAFF

CHANGES IN BEST PRACTICES FOR LEARNING ENVIRONMENTS



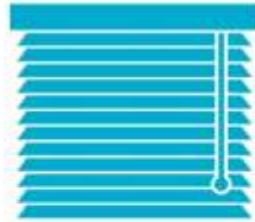
HARSH LIGHTING

INDIRECT,
DIMMABLE
LED LIGHTING



GLOSSY VCT

MATTE
FLOORING



CURTAINS / BLINDS

ROLLER
SHADES



SYMMETRY OR
UNHELPFUL PATTERNS

SENSORY
LANDMARKING



Example image from another school



Example image from another school





NMSBVI STREETScape - INDIAN WELLS ROAD







Willjay / CC-BY-3.0



Allens

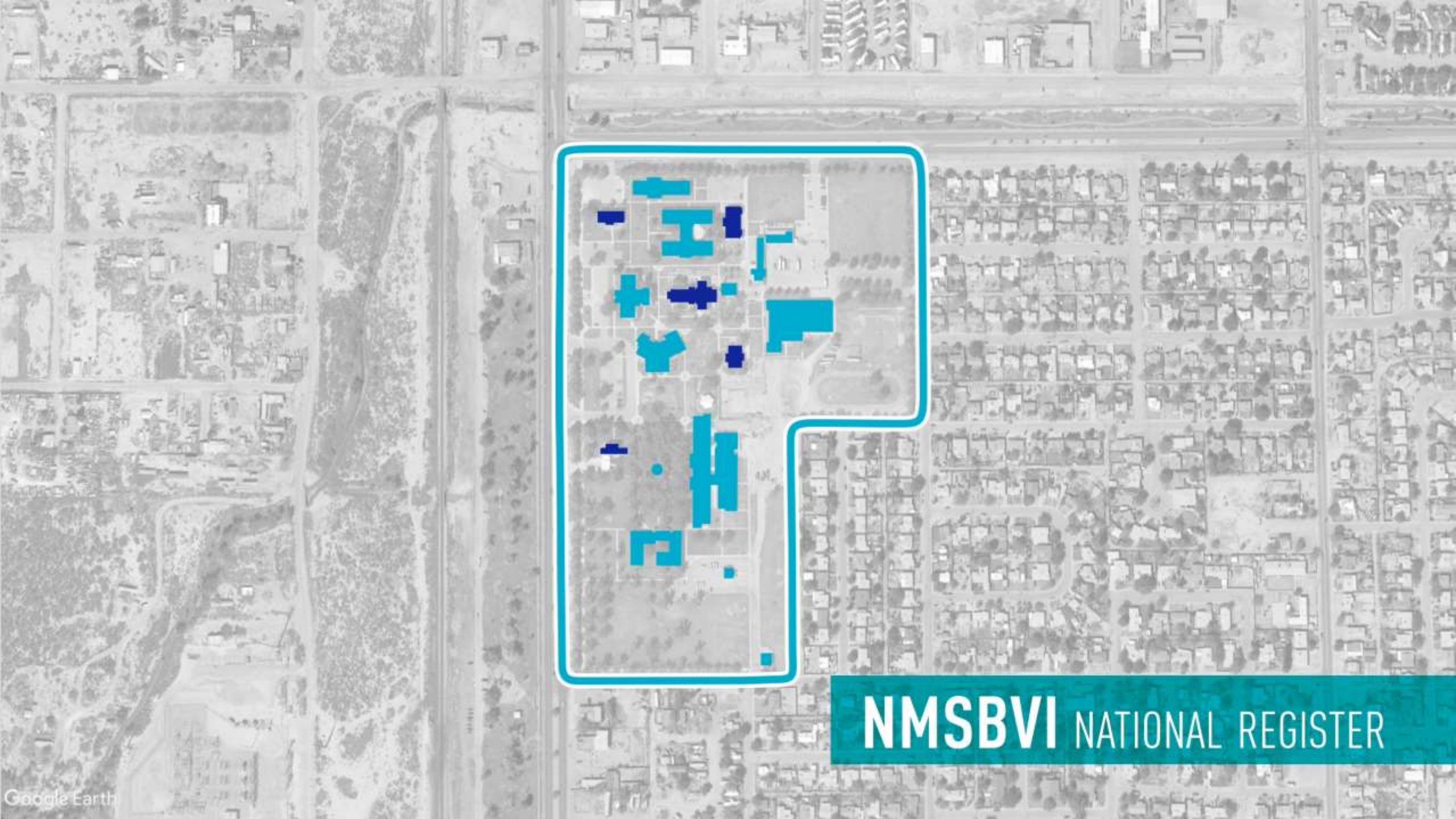


Google earth





PAUL & LOIS TAPIA
BUILDING



NMSBVI NATIONAL REGISTER



Ditzler Auditorium



Recreation Center



Central Receiving



Tapia



Infirmary

NMSBVI SOLUTIONS PERFORMANCE VS. INTEGRITY



NMSBVI SOLUTIONS PERFORMANCE VS. INTEGRITY



Original



Replacement



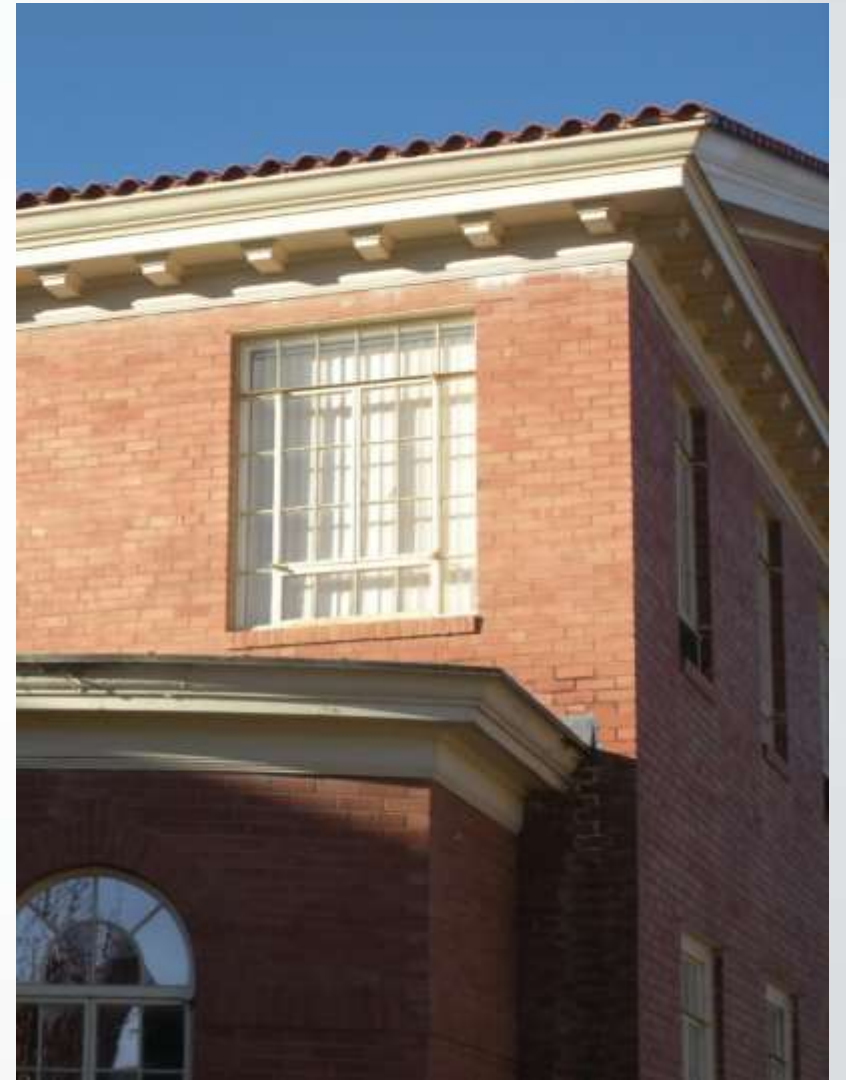
Original



Replacement

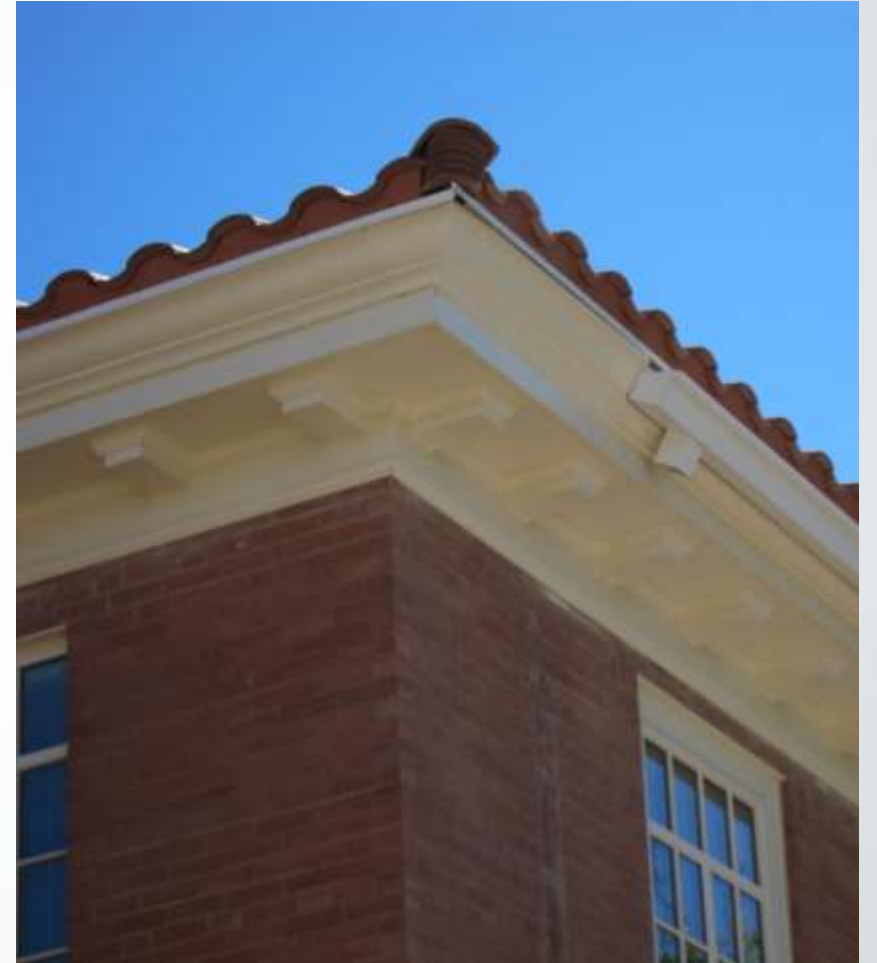
NMSBVI SOLUTIONS PERFORMANCE VS. INTEGRITY

Original



NMSBVI SOLUTIONS PERFORMANCE VS. INTEGRITY

Replacement



NMSBVI NEW BUILDINGS



NMSBVI NEW BUILDINGS



NMSBVI DEMOLITION



Barbara McDonald, "Weavers of a Tapestry of Time."



NMSBVI DEMOLITION



1959 Practical Arts building

NMSBVI DEMOLITION



1957 San Andres building

NMSBVI DEMOLITION



1978 Bert Reeves building

NMSBVI MURAL



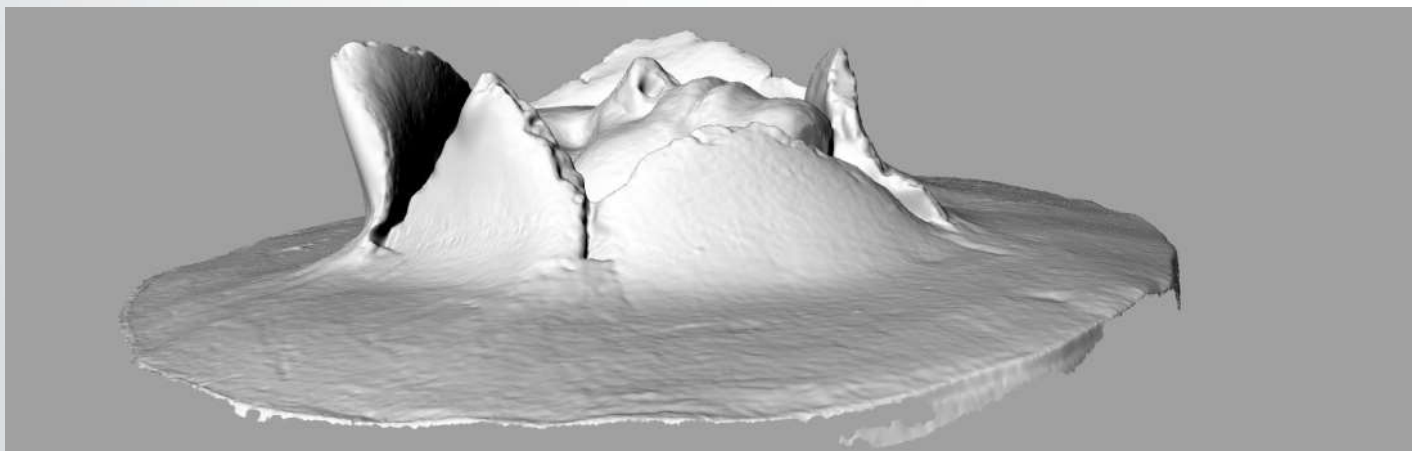
NMSBVI MURAL



NMSBVI MURAL



3D model



3D print





APPROACH

&

CONCLUSION

NMSD

Demolish buildings that don't meet functional needs, even if registered or cherished

Window replacement, with window restoration at registered buildings with original windows

Provide a new museum

Salvage beams and light fixtures for reuse

Honor cherished elements and incorporate interpretive signage

NMSBVI

Maintain oldest buildings and demolish more recent buildings that are less consistent with the campus style

Window replacement

Maintain archival information

Digital capture of mural

Students (not campus) are the legacy

WHAT IS YOUR STORY?

There is no “right” decision

- Investigate campus history
- Work with historic preservation staff
- Be realistic about budget and priorities
- Embrace criticism
- Honor campus culture

New Mexico School for the Deaf Santa Fe

THANK
YOU. 😊

DEKKER
PERICH
SABATINI

ARCHITECTURE
DESIGN
INSPIRATION

www.dpsdesign.org/blog