

SYLVAN MIDDLE SCHOOL

Citrus Heights, CA | Middle School | New & Renovation



SITE PLAN

GEARING UP FOR NEW CURRICULUM

1 New student quad

with shaded outdoor dining spaces
encourages student and community gathering

2 STEAM courtyard

supports outdoor learning

3 Protected outdoor space

augments the Maker and Art Labs

4 Refreshed Administration, Family and Student Support Services

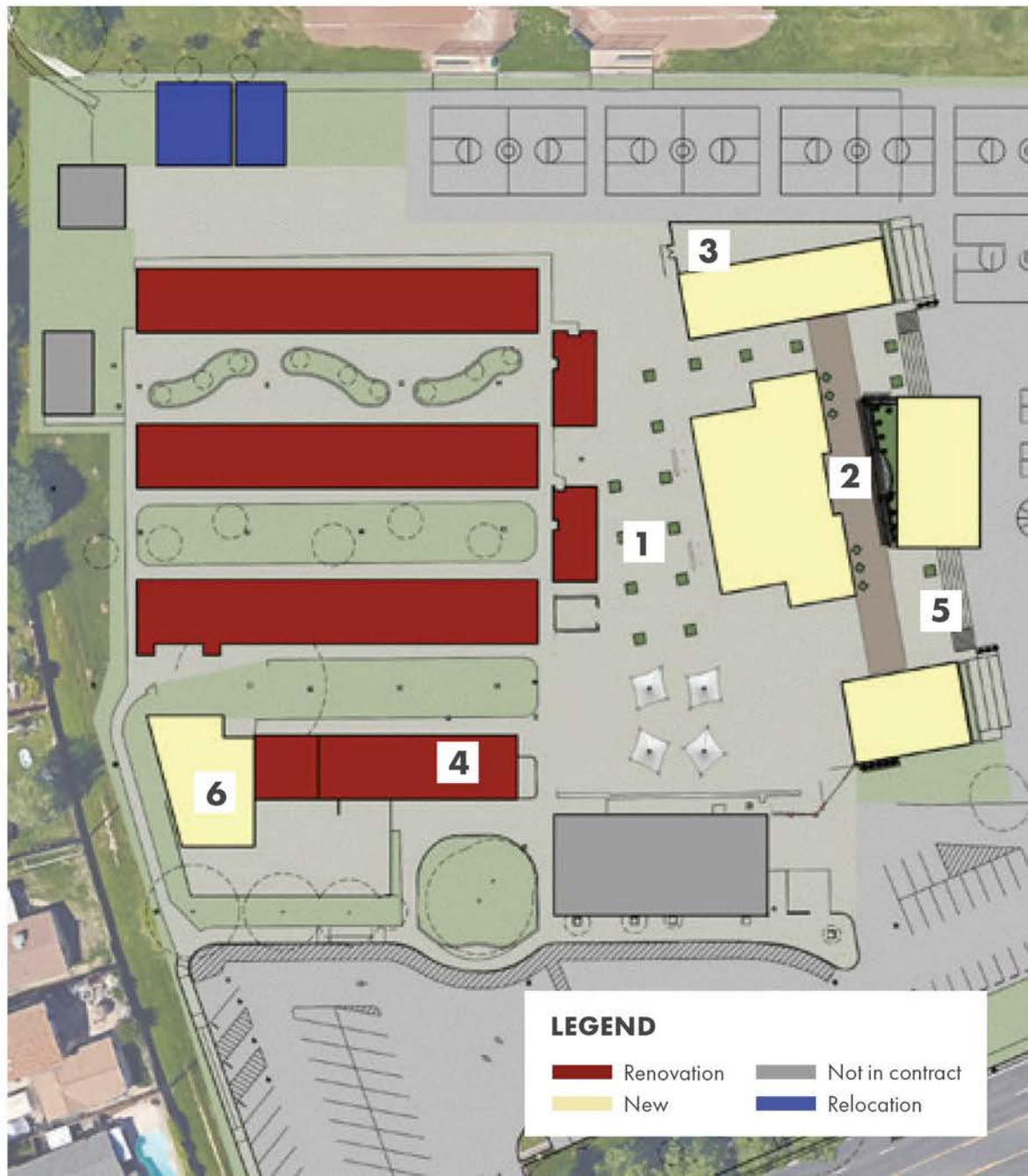
welcomes students and the community

5 Stairs adjacent to new Music Building

serve as amphitheater for performance
and gathering

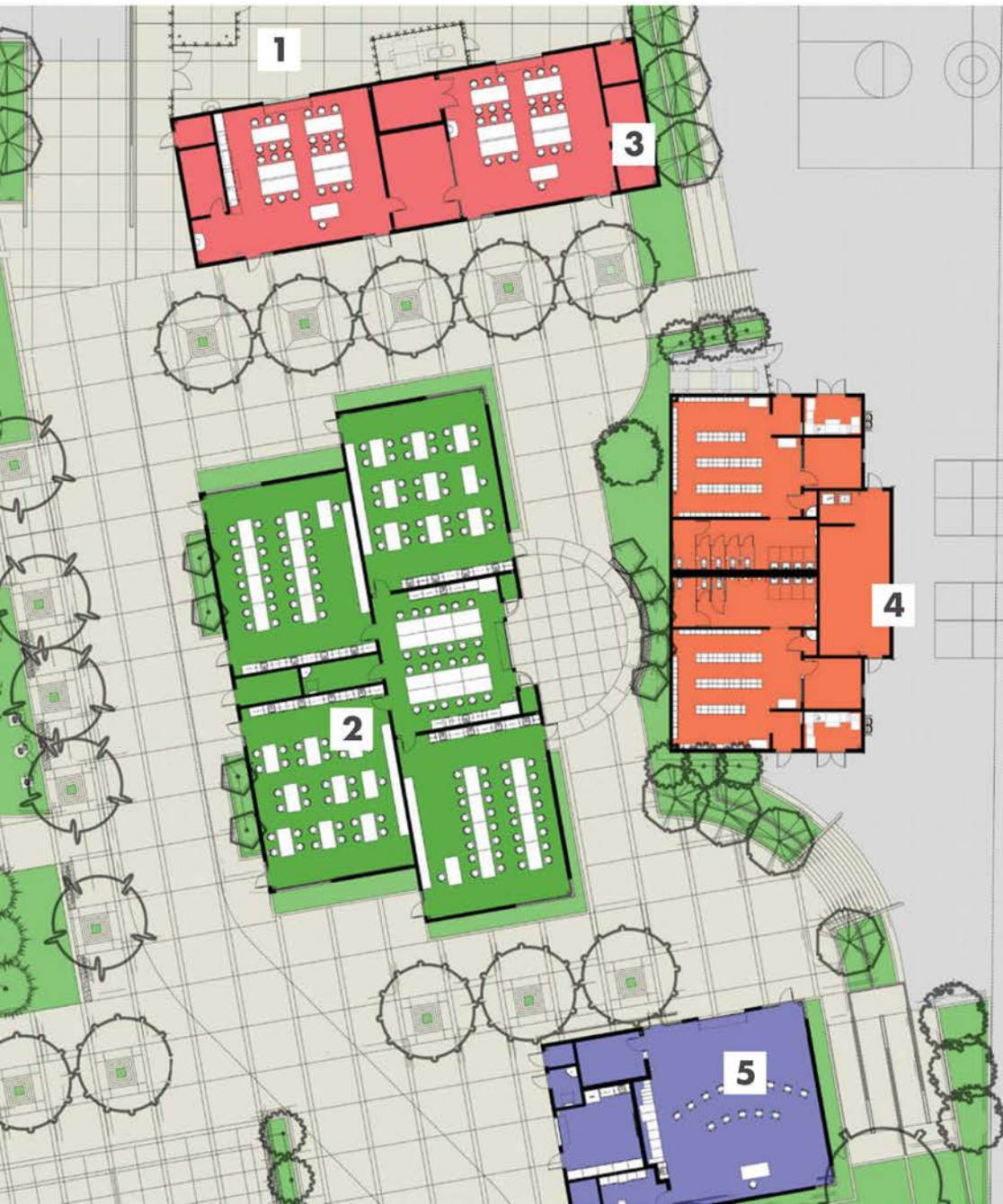
6 Learning Commons

with reimagined library for next generation



FLOOR PLANS

SUPPORTING A NEW
EDUCATION IDEAL



- 1 Outdoor art + maker space**
for 3D art and hands-on building
- 2 Four flexible wet labs**
surround a central resource and student breakout space with direct access to learning courtyards
- 3 Daylit art + maker spaces**
are large to support project-based learning
- 4 Locker rooms**
are placed strategically near the playfields and promote school pride to the community through a mural on the exterior
- 5 New music building**
extends to the outdoors with a roll-up door connecting it to the STEAM Quad

CONTEXT

STRENGTHENING COMMUNITY ROOTS

STEAM **curriculum-specific additions**
and **full renovation** of the existing buildings
transformed the aging buildings into a
source of neighborhood pride.



**Former Citrus Heights
Elementary School**
New Sylvan Site

**Former Sylvan
Middle School**

Stairs adjacent to the new Music Room serve as an amphitheater for **performance and gathering.**

EXTERIOR

DEVELOPING POINTS OF INTERSECTION



INTERIOR

RE-IMAGINING THE CLASSROOM

Reinvigorated classrooms support **multi-modal** and **simultaneous** learning activities.

Day-lit learning spaces enhance performance and well-being.

Student interaction improves learning outcomes for all.





Community input played a critical role in determining the future educational mission.



PROCESS

INVITING COMMUNITY INVOLVEMENT

Big changes are challenging.

Adoption of STEAM curriculum **excited staff + community** and **sparked full engagement** in the planning process.

Hundreds turned out to **celebrate** the grand opening.

LEARNING COMMONS

ALIGNING WITH
NEXT GENERATION
LEARNER INTERESTS



The learning commons, with
soft + flexible furnishings is a
student **gathering place.**



Flexible performing arts and
associated **storage spaces**
support Music activities.

PERFORMING ARTS

ROUNDING OUT THE STEAM CURRICULUM



MAKER SPACES

SUPPORTING A VARIETY OF
LEARNING ACTIVITIES

Small group breakout spaces + technology
support **student collaboration** and **engagement**.



SPACES IN-BETWEEN

CONNECTING TO THE OUTDOORS

Roll-up doors provide **natural daylight**
and expand **the learning environment**.



STEAM SPACES

INTEGRATED APPROACH

Whiteboard walls + flexible furnishings
support next generation learning.



Project Narrative (page 1)

Full STEAM Ahead: Transforming an Existing Elementary School into a STEAM-focused Middle School

Sylvan Middle School is more than 60 years old...and it showed. After careful condition assessment and analysis, San Juan Unified School District determined that the school was past its useful life and needed to be replaced. But how to replace it? Sylvan shared a large site with the adjacent Citrus Heights Elementary School on a prominent corner in the City of Citrus Heights. The elementary school, and another nearby, were both well under their desired and efficient capacity, but were facilities with very “good bones.” The decision to combine those two elementary schools at the off-site location freed up the on-site elementary school to become the reimagined Sylvan Middle School.

Community and staff concerns were real; their beloved middle school was closing, and they were being asked to believe a down-at-the-heels elementary school could be transformed into an inspiring middle school. This kind of change is hard, and many in the community, especially the teachers, reacted with skepticism. *But the design team engaged the entire Sylvan faculty, as well as representative students, community leaders and parents, in the crafting of the educational vision* that would guide them through the design process, resulting in a revitalized facility could truly support the next generation learning opportunities they had identified as important.

Beginning with the STEAM acronym—*Science, Technology, Engineering, Arts and Math*—as the point of departure, the design team used *inspirational photos and renderings, virtual tours of comparable spaces and furniture “test drives”* to stimulate dialogue. The project team held regular staff meetings—at the global and at the individual level—throughout the project’s design and documentation phases to encourage brainstorming, capture ideas, and assure staff their suggestions would be fully considered and their concerns addressed.

Once the community decided to adopt the STEAM curriculum for Sylvan, faculty and staff *leveraged the opportunity* afforded by the school move *to change the old pedagogy*. They began by pioneering the new curriculum at their existing site while planning for the new site was occurring. They held a STEAM night to teach the community about the STEAM curriculum, and ongoing tours of the campus inspired everyone. This helped to both inform the design process and to prime students and staff, readying them to take full advantage of the new campus on Day One.

What ultimately emerged through the *engaging and collaborative process* was a plan for reinvigorating existing classrooms, improving administrative, student and community services spaces, and adding a new Learning Commons along with specialty spaces for Science, Technology, Engineering, Arts and Math *designed to facilitate the STEAM-based curriculum the site planning committee had embraced*.

Project Narrative (page 2)

The break from the original finger plan grid signals the new educational direction and allows for the creation of the variety of outdoor gathering—and learning—opportunities key to supporting the new curriculum. The Learning Commons *departs from the traditional library design*, shifting the emphasis from books and quiet individual work to diversified learning opportunities and active, project-based learning. Throughout the learning environments, movable and comfortable furnishings allow for easy reconfiguration, while a robust campus wireless network and access to outdoor courtyard spaces support the *next generation learning* that happens here.

The faculty and staff value the role Sylvan, the only middle school in Citrus Heights, plays in shaping the future of the community. The revitalized campus entry has enhanced the public's impression of the new campus and welcomes them in to take advantage of the enhanced administrative, student and family resource services provided there.

Adjacent to the *new STEAM Quad, Art and Maker Lab spaces* share a building and a protected outdoor learning environment for 3D art and "building things." Inside the building, a central, glass-walled space houses the *computers that drive the 21st century equipment*, including plasma cutters and 3D printers. Four science learning environments are organized around a *central STEM Studio* which supports the labs with space for small group student work and a glass garage door that opens directly on to the quad. Teachers envisioned their Robotics program in this space—robots racing from inside to out, up and down the STEAM quad, past the student garden and back again. A flexible *Music Room*, with a roll-up door to an outdoor amphitheater and performance space, rounds out the STEAM program.

Sustainable design strategies are expected in next generation schools so the design team employed strategies including daylighting, natural ventilation and water-wise landscaping practices throughout. Completed just in time for the 2016-2017 school year, enrollment has grown, and the new Sylvan Middle School is moving *full STEAM ahead*.

Project Budget

The initial project budget was \$15.5 million, however the client requested approximately \$4 million in scope changes and add value items, resulting in a final project budget of \$19.5 million.

Project Details

1. Project Name	Sylvan Middle School: A STEAM Focused Transformation
2. District Name	San Juan Unified School District
3. City/State	Citrus Heights, CA
4. Superintendent	Kent Kern
5. Occupancy Date	August 2016
6. Grades Housed	6-8
7. Design Capacity (# of students)	800 students
8. Site Size (acres)	28 acres
9. Gross Area (Sq. Ft.)	New: 20,845 square feet, Renovated: 23,458 square feet
10. Space per Pupil (Gross)	55 square feet per pupil for the project-specific spaces; 65 square feet for pupil including spaces not part of project
Design Build (Y/N)?	No
If yes, Total Costs	
If yes, Cost Include:	
If no, Site Development Costs	Included in \$19.5 million construction costs
If no, Construction Costs	\$19.5 million
If no, FF&E	Approximately \$1.2 million
If no, Other:	
If no, Total Cost	Approximately \$20.7 million exclusive of District "soft costs" for design, fees, management, etc.

Ed Specs / Program of Requirements

Please include a PDF of the educational specifications/program of requirements along with your submittal package.

Project Data: *(Confidential Information)*

Submitting Firm:	Lionakis
Project Role	Architecture, Structural Engineering, Interior Design, Sustainability
Project Contact	Laura Knauss
Title	Principal
Address	1919 Nineteenth Street
City, State or Province, Country	Sacramento, CA 95811
Phone	(916) 558-1900

Joint Partner Firm:	N/A
Project Role	
Project Contact	
Title	
Address	
City, State or Province, Country	
Phone	

Other Firm:	N/A
Project Role	
Project Contact	
Title	
Address	
City, State or Province, Country	
Phone	

Construction Firm:	Clark/Sullivan
Project Role	General Contractor
Project Contact	Ted Foor
Title	Vice President and California Area Manager
Address	2024 Opportunity Drive #150
City, State or Province, Country	Roseville, CA 95678
Phone	(916) 338-7707

Photo Release: *(Return SIGNED copy with your submittal)*

Print, Sign, Scan and Submit with Package

Name of Project: Sylvan Middle School: A STEAM Focused Transformation

Location of Project: Citrus Heights, CA

A4LE has our permission to:

- ✓ Send photos electronically to jury members (required for entry).
- ✓ Display photos in the award winners' area of the website, if selected as a finalist.
- ✓ Display photos on other sections of the website as representative A4LE projects.
- ✓ Print photos in A4LE newsletters.
- ✓ Print photos on A4LE marketing materials, i.e. brochures , awards, call for entries, etc.
- ✓ Print photos and project details in the A4LE Design Portfolio, if selected as a finalist.
- ✓ Special projects with prior permission.

Please Note: A4LE maintains an in-house archive of school designs as part of our research library.

Your information will be entered and recorded as one of those designs.

Firm: Lionakis

Responsible Party/Photographer: Tim Maloney, Technical Imagery Studios

Signature:



Date of Release: March 30, 2018