

A photograph of the exterior of Grand Prairie High School at dusk. The building is a modern, multi-story structure with large glass windows and brick accents. The sky is a deep blue, and the building's interior lights are visible through the windows. Trees are visible in the foreground and background.

# CONNECTION AND IDENTITY

## THE REINVENTION OF GRAND PRAIRIE HIGH SCHOOL

CORGAN 



---

# Association for Learning Environments

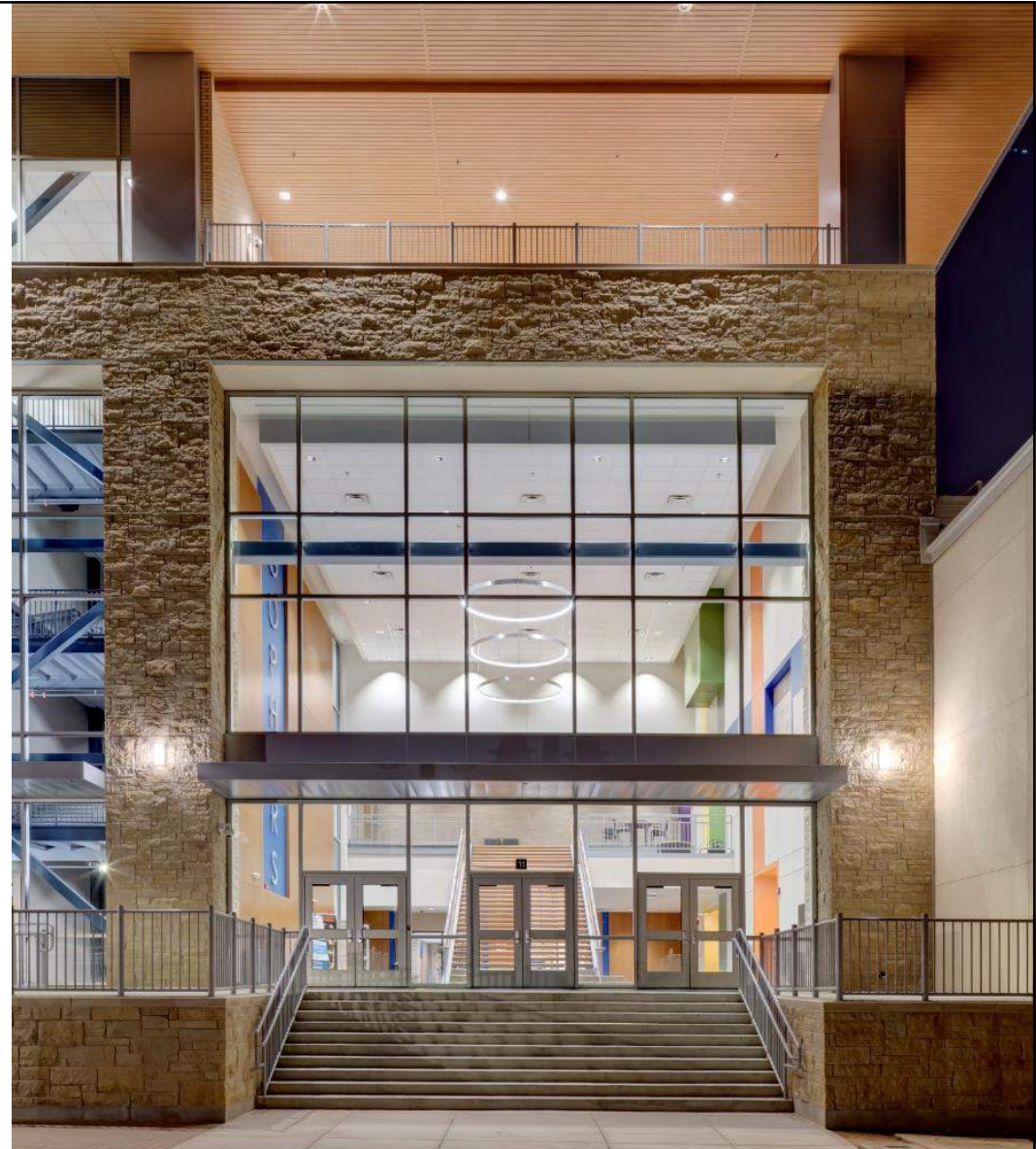
F-118

## Transformation, Connection and Identity: The Reinvention of Grand Prairie High School

NTX-20SEP18

Jason Mellard, AIA, LEED AP  
September 20, 2018

---



## Course Description

---

This session will describe how an existing disjointed school site can be re-envisioned to create a unified and collaborative campus with a strong identity for the students and community. Through facility assessments, programming and master planning that supports the mission of the school, strategic program decisions can be made regarding demolition, renovation, addition and site development that make the best use of bond dollars. Areas of connection and collaboration throughout the campus are key to developing a strong sense of place that accelerates learning. The school features a four-story academic tower addition, a combined learner and facilitator Campus Union, and new campus buildings and site connections.



# Learning Objectives

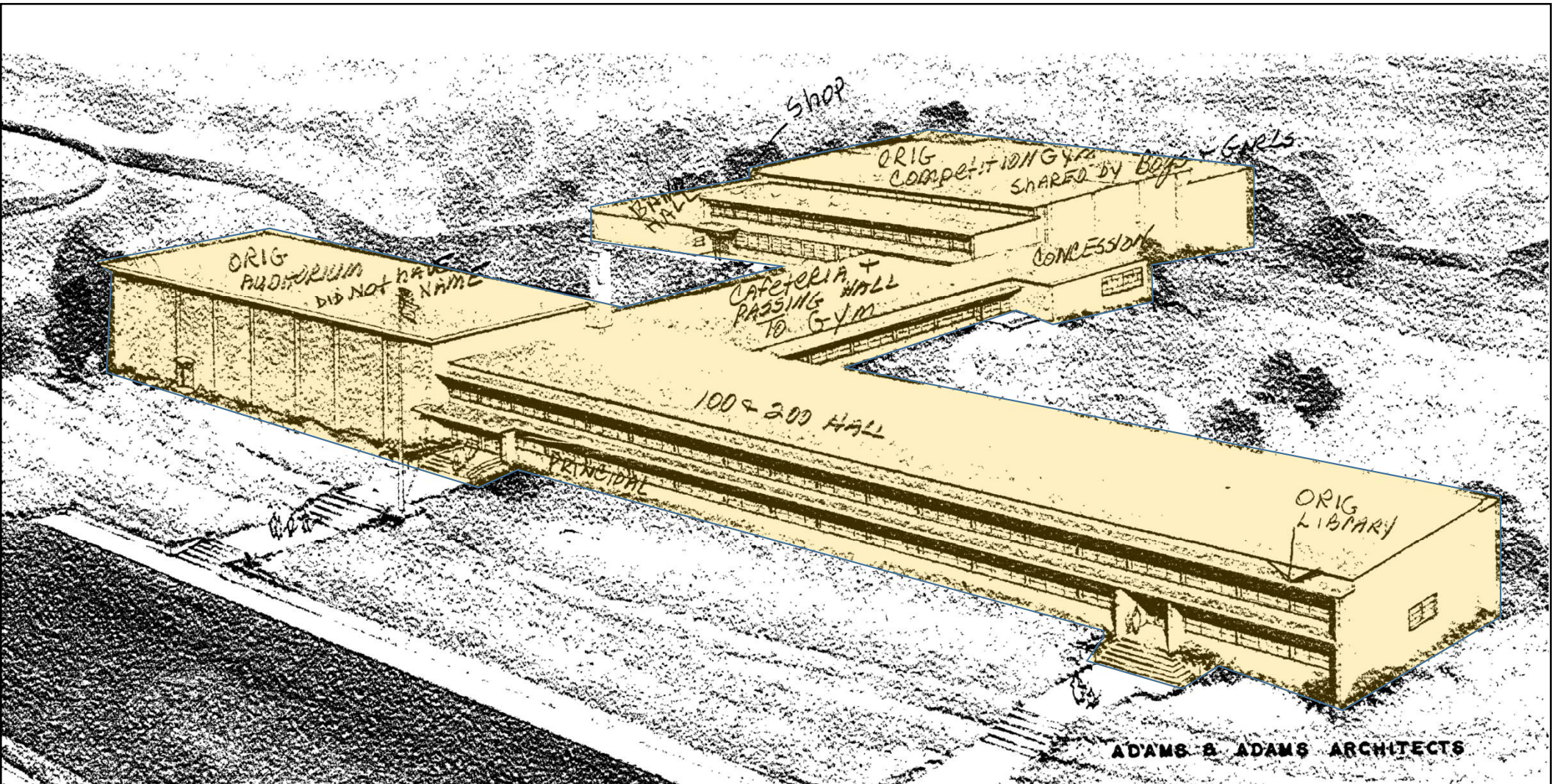
---

At the end of the this course, participants will be able to:

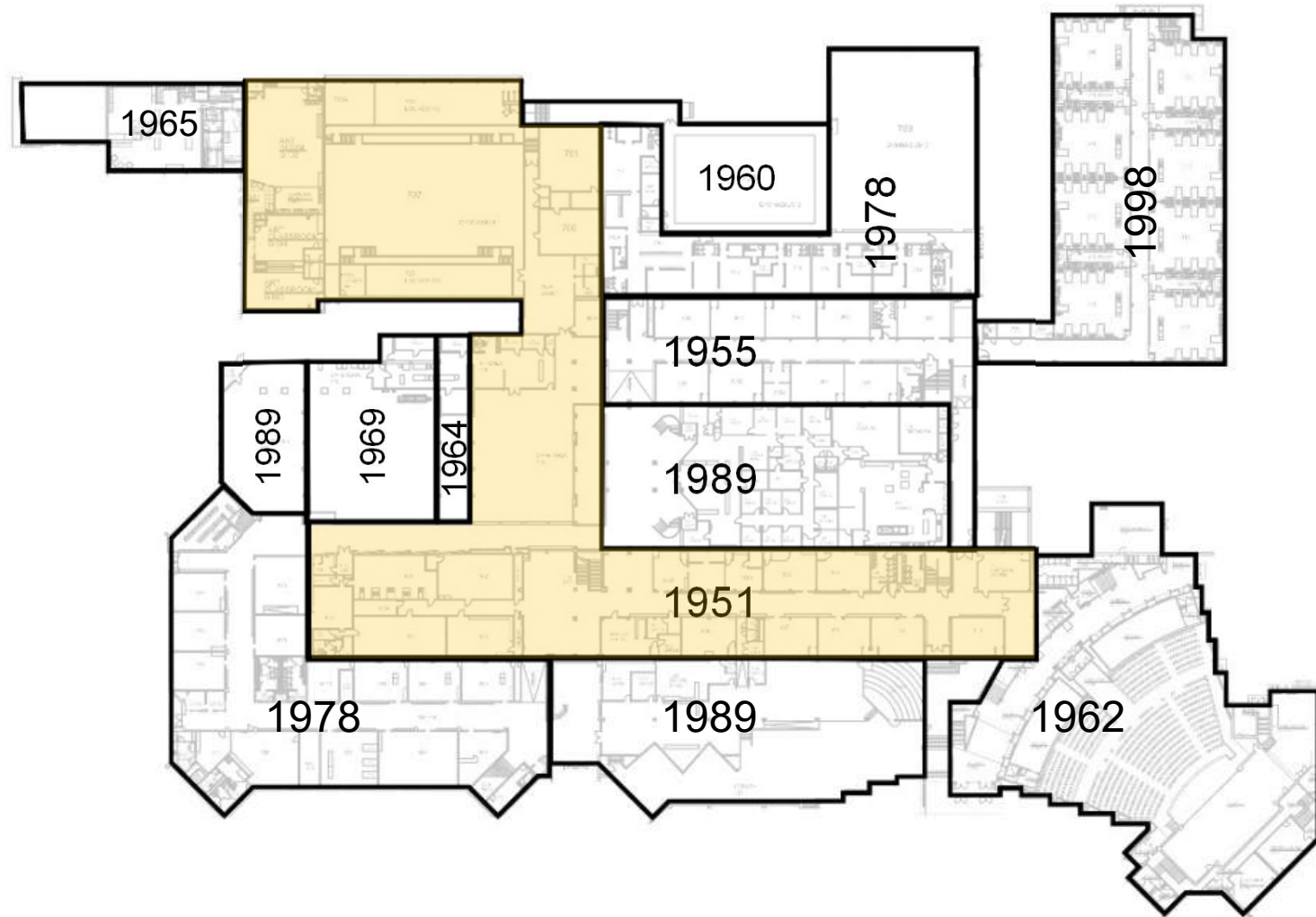
1. Understand how to identify key areas of focus on an existing campus that can have the most impact towards meeting the project's goals at the least cost.
2. Learn how to create and implement design principles and strategies to create a unified campus, both functionally and experientially, from an existing disjointed site.
3. Discover how multiple types of collaboration (between students, staff and the community), when supported by transparency and connection at various scales, can impact the campus as a whole.
4. Discuss the use of Variable Refrigerant Flow (VRF) HVAC systems in education facilities.

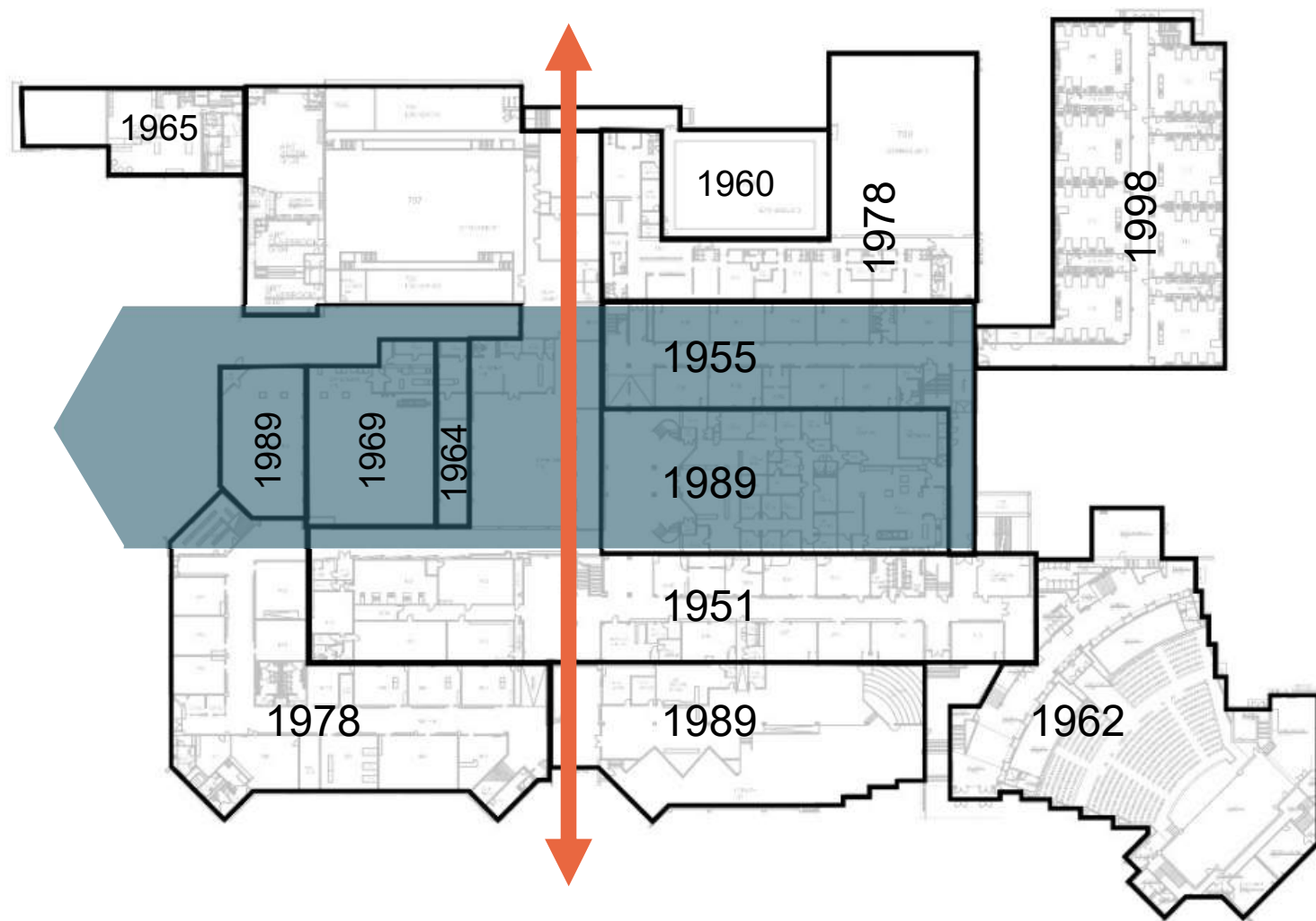


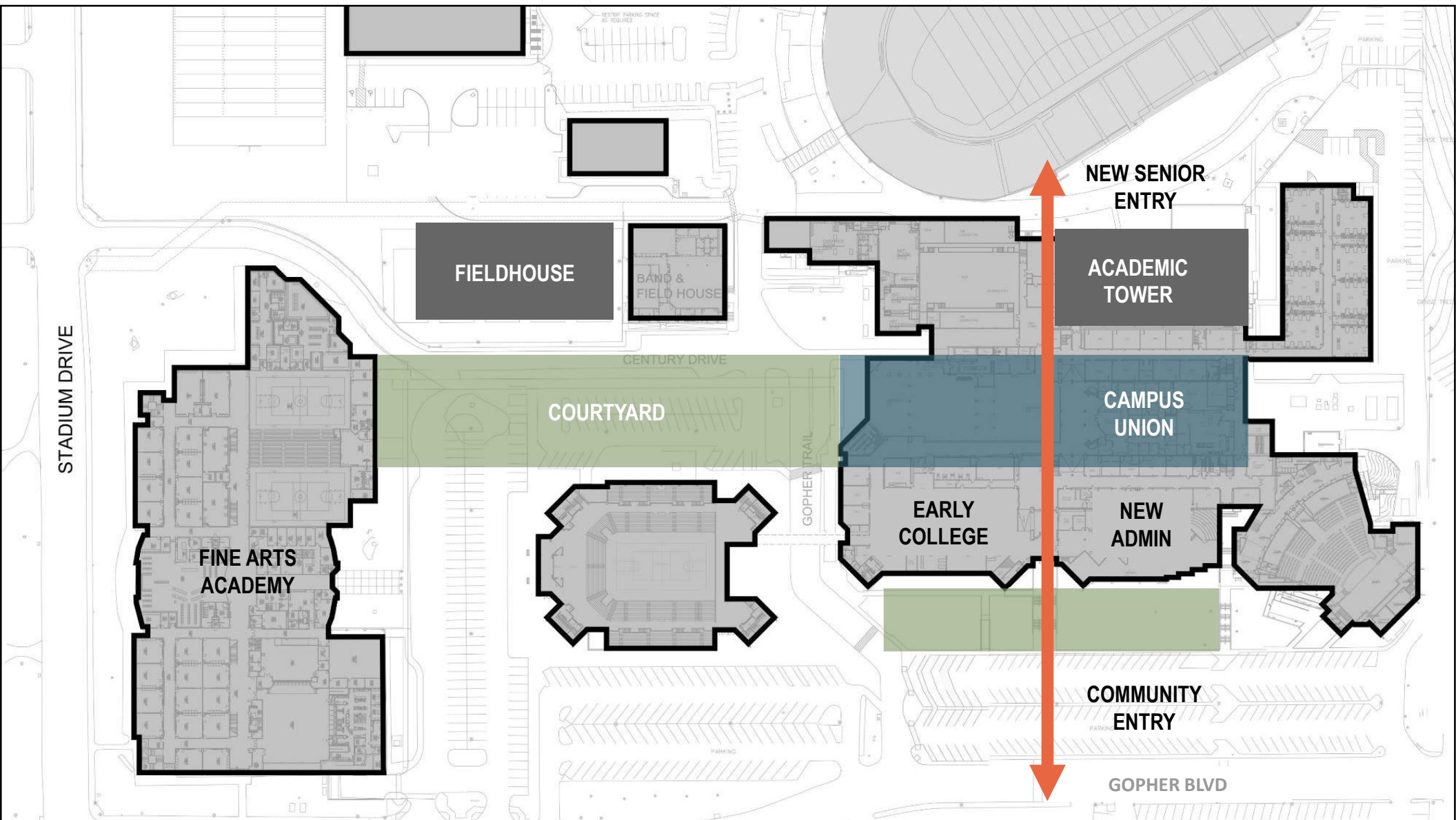




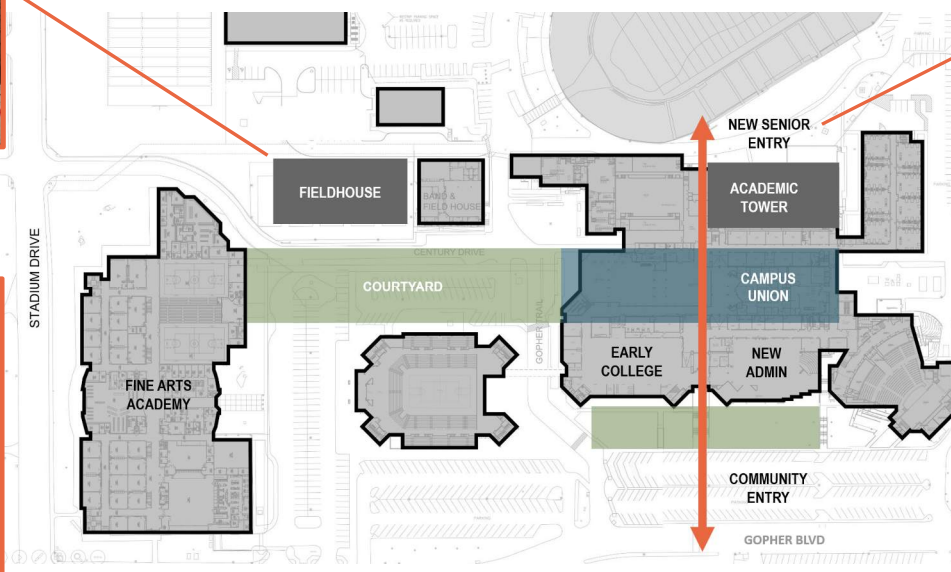




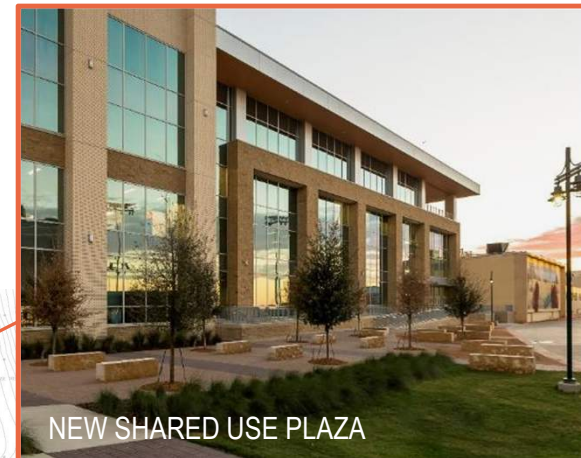


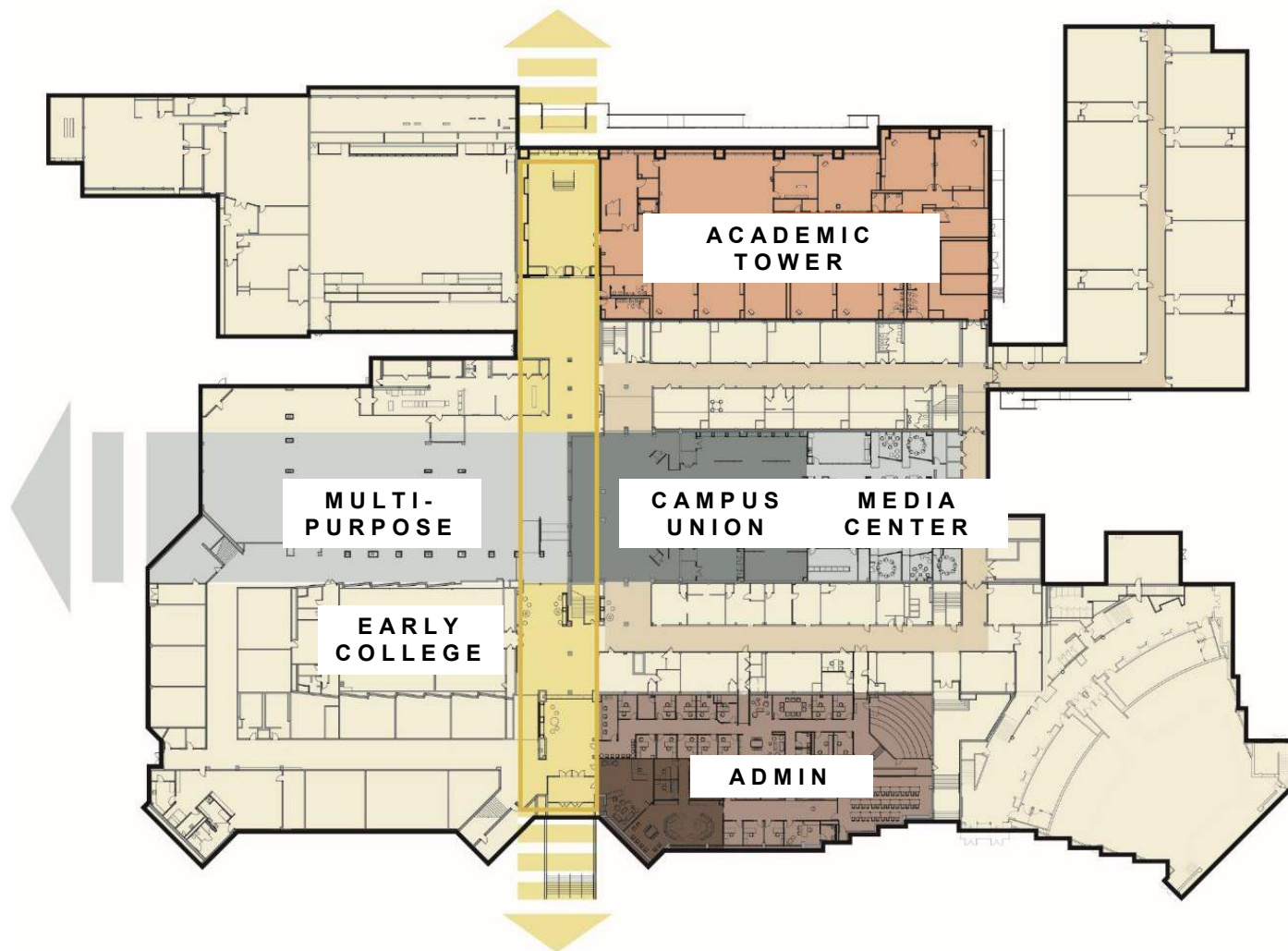
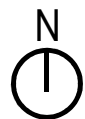




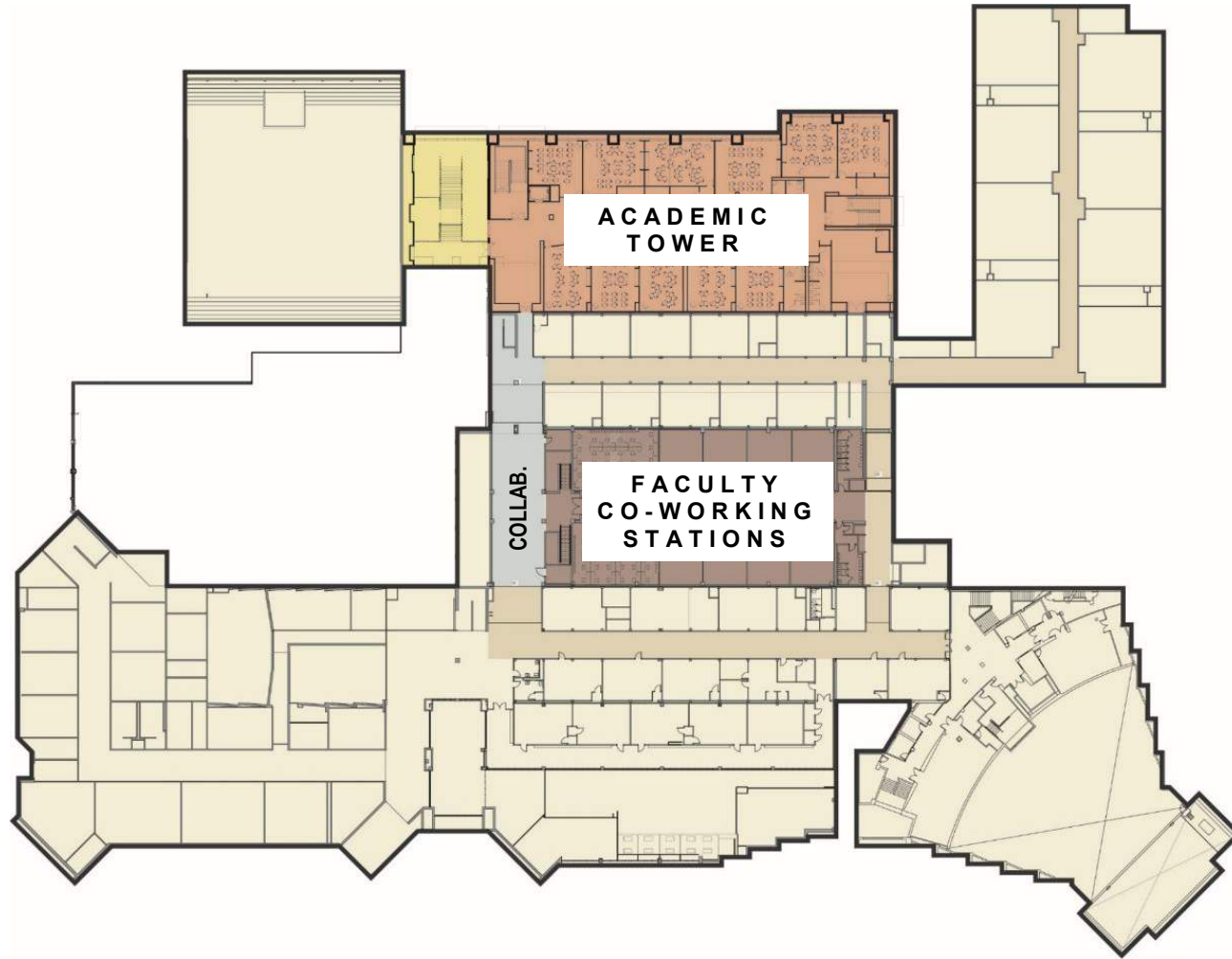


STREET CLOSED TO PUBLIC DURING SCHOOL HOURS





LEVEL 1



LEVEL 2







SENIOR ENTRY



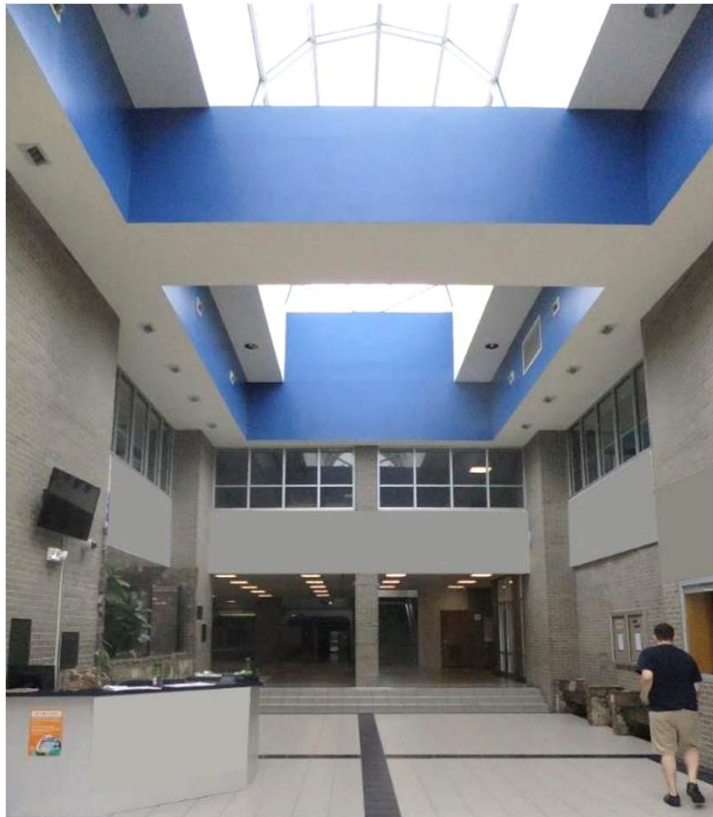
CAMPUS UNION



WELCOME CENTER



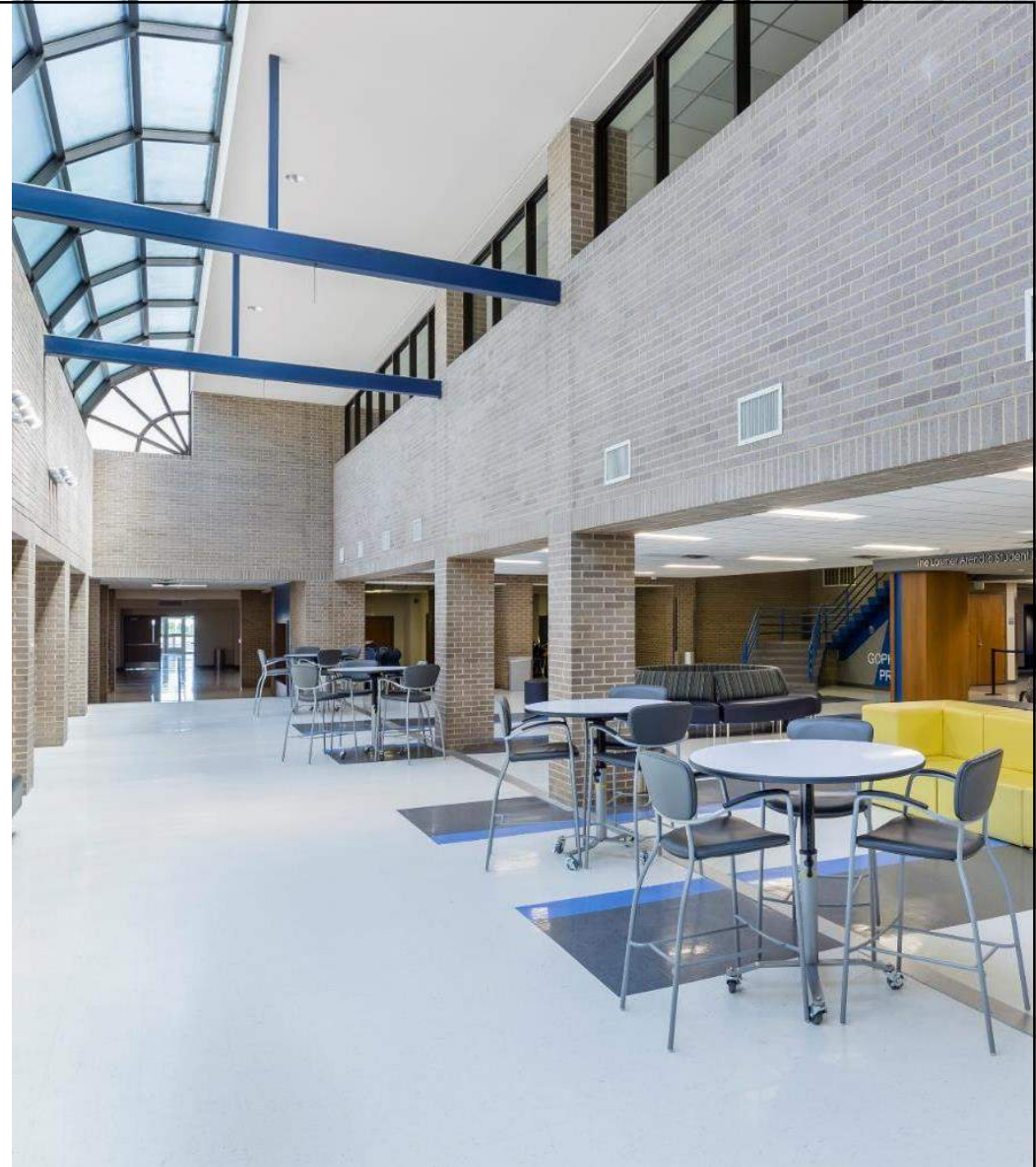
BUILDING SECTION

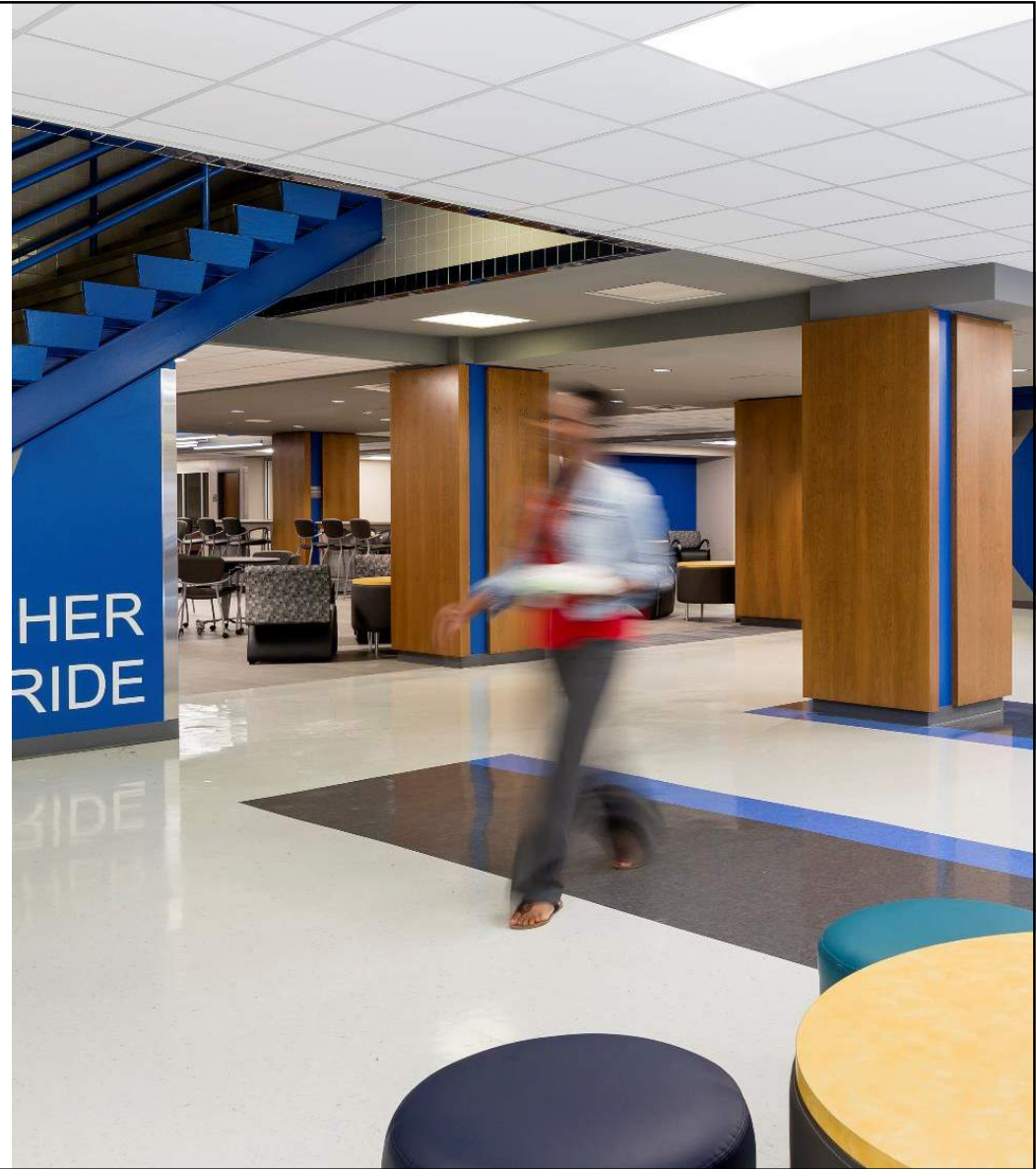




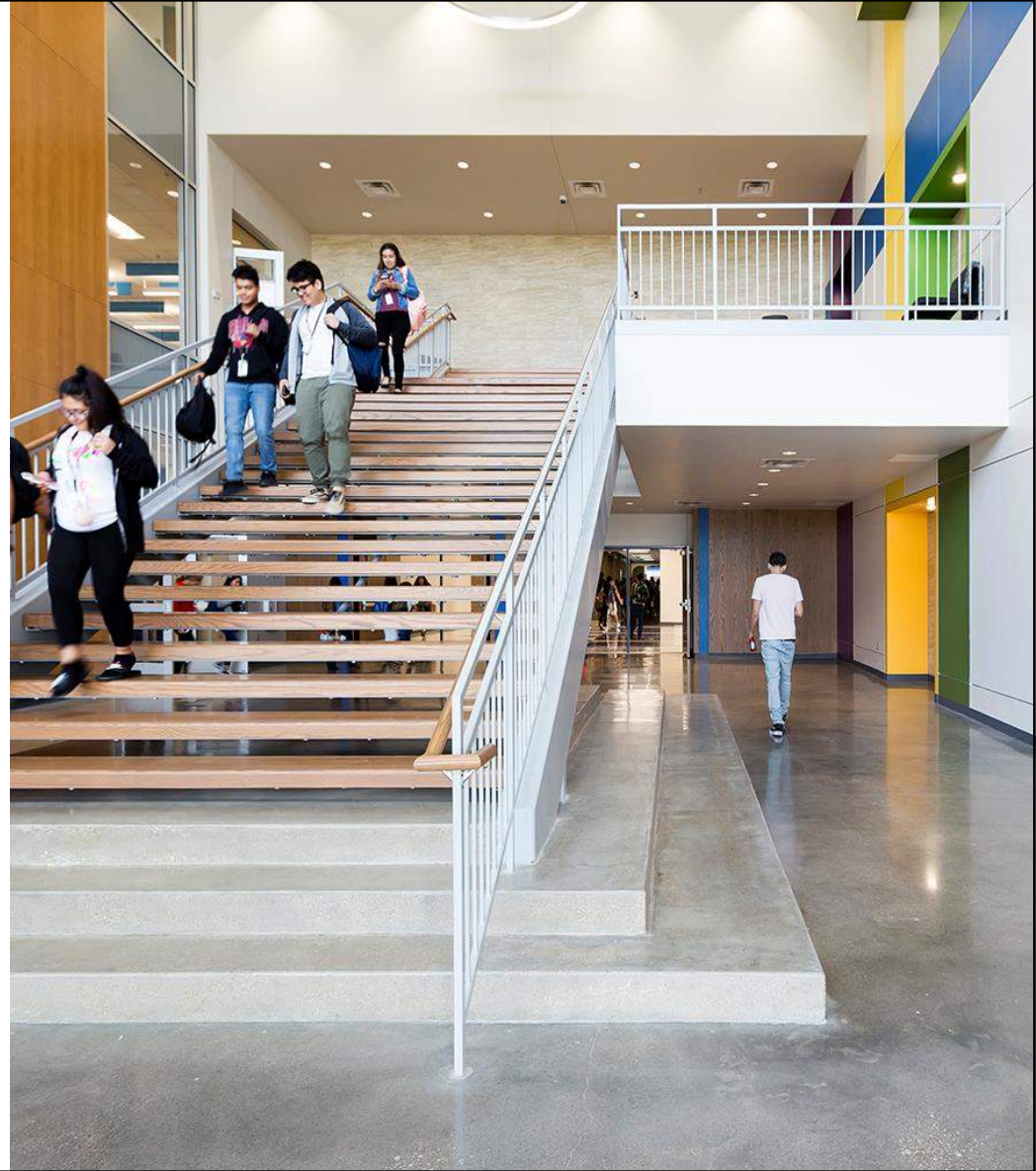




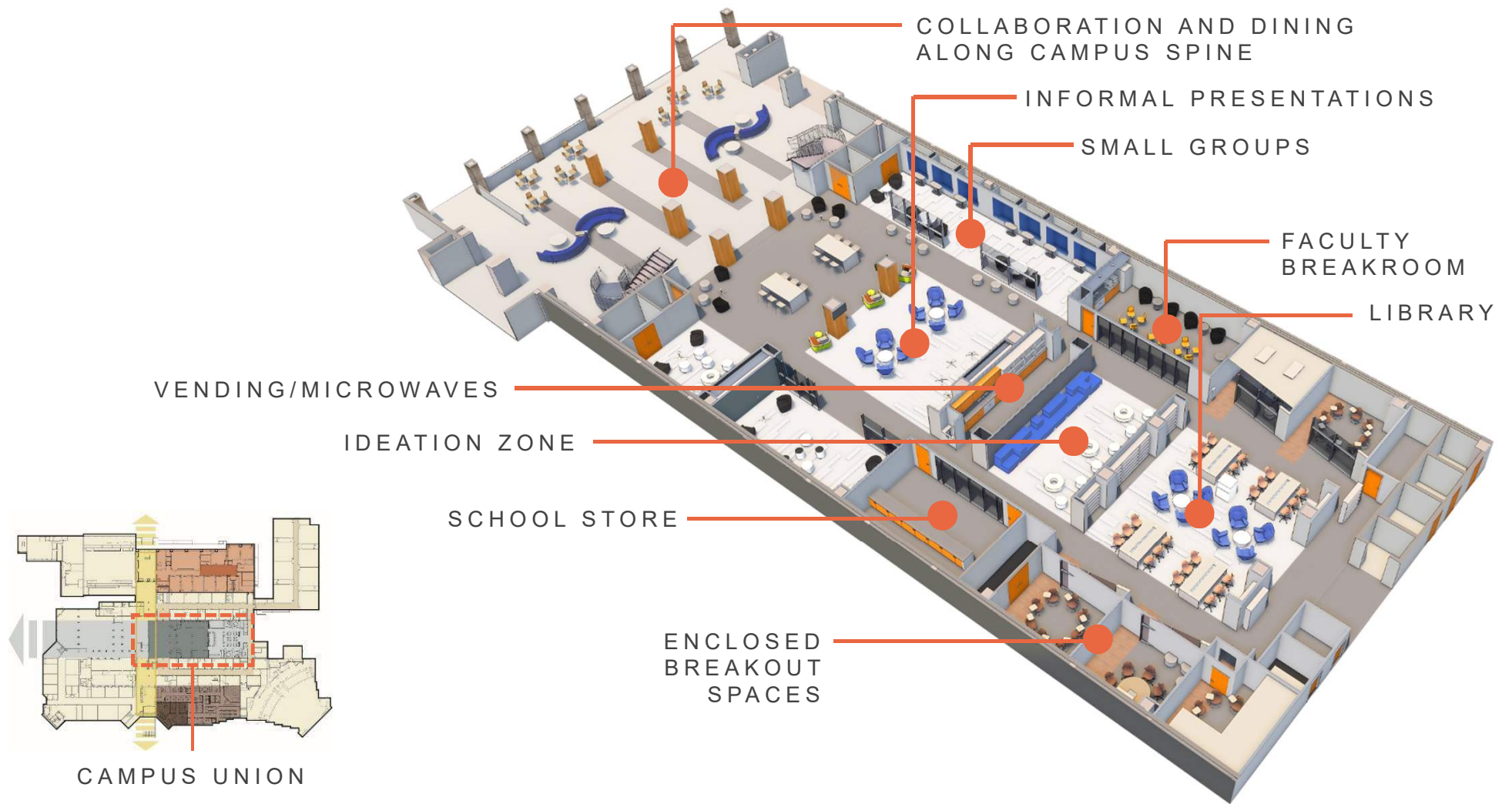
















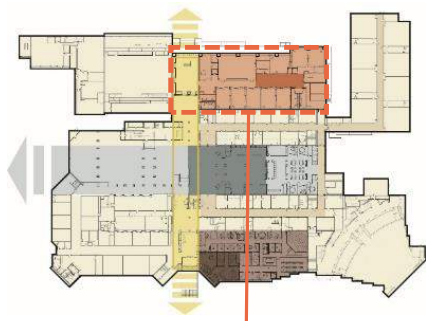






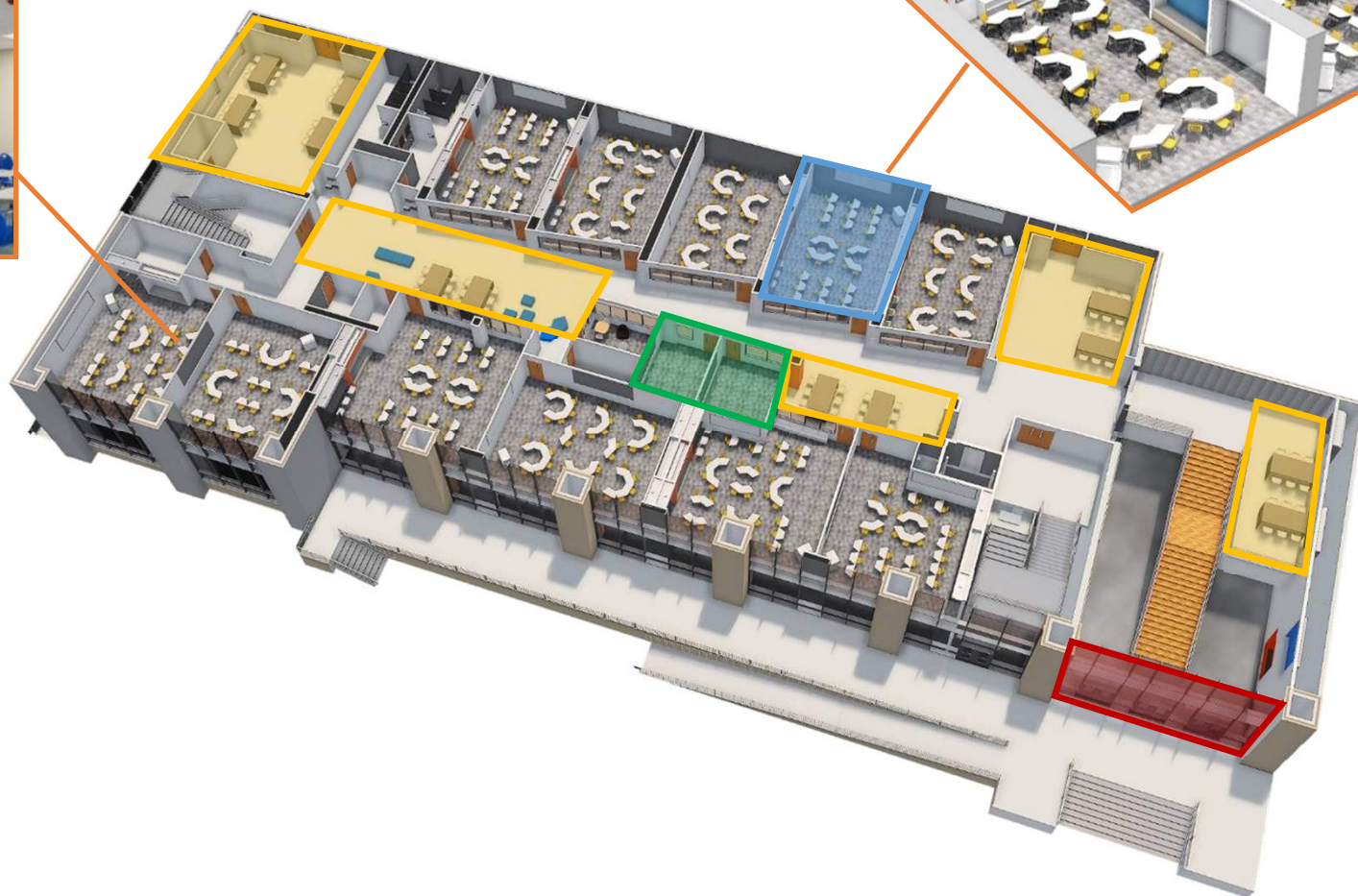
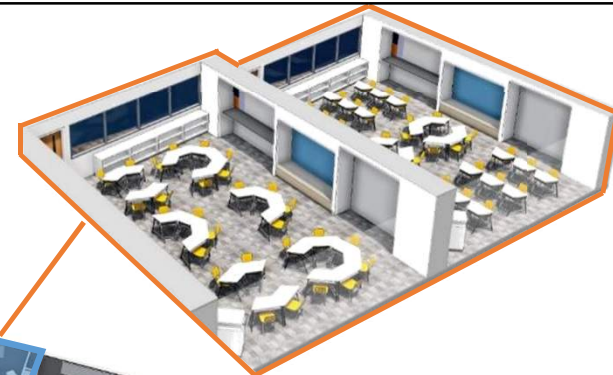


“TECH BAR” WITH  
SOFT SEATING,  
WRITING AND PIN-UP  
SURFACES



ACADEMIC  
TOWER

CUSTOMIZABLE  
CLASSROOMS



SENIOR ENTRY













