

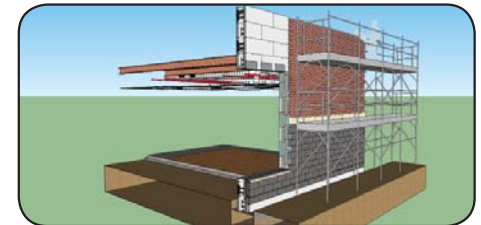
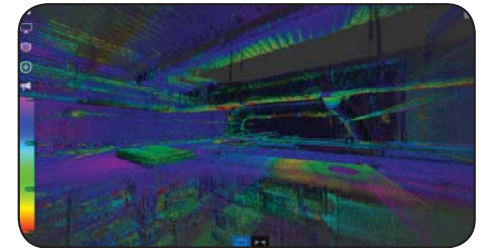
The Council of Educational Facility Planners International (CEFPI) presents...

3D / 4D / 5D Building Information Modeling

You are invited to join us for a short presentation and Q&A session on the ever-increasing capabilities of Building Information Modeling (BIM) software, and its benefits to the design and construction of **educational facilities** for architects, engineers, facility planners and managers, as well as the end users. The software allows designers and builders to identify mechanical and structural clash detections and accurately price value engineering decisions. BIM also allows a better evaluation of constructability and project scheduling, which is especially beneficial to ensure that a new or renovated school will open on time!

We will also present the capabilities and benefits of 3-Dimensional Laser Scanning and its ability to create accurate as-builts for existing schools and historical buildings, including a live demonstration!

The event will be held at the office of CORE Construction Services in Metairie, followed by happy hour with cocktails & appetizers for all attendees from 5:00pm until 6:00pm.



CORE Office Building



Directions to CORE

EVENT DETAILS...

DATE: THURSDAY, MAY 21, FROM 4PM TO 5PM
(happy hour with cocktails & snacks to follow from 5pm-6pm)

LOCATION: CORE Construction Services Office
3131 N. I-10 Service Road East, Suite 401
Metairie, LA 70002

(CORE's office is accessible from the I-10 Service Road coming from Bonnabel, or from Ridgelake Drive off of Veterans Blvd)

RSVP: Please RSVP to Abby Lacourse by Thursday, May 14th at ALacourse@preauxtech.com *

* We have limited space available, so the event is only open to the first 50 people who sign up.

