



HSPVA

Kinder High School
for the
Performing and
Visual Arts

KINDER HIGH SCHOOL NORTH PERFORMING AND VISUAL ARTS

Springer Research Research 11th 11th Research Research 11th 11th Research Research 11th 11th

ONLY

MISSION IMPOSSIBLE?

**A 5 Story High School
in the Heart of
Downtown Houston to
Support the Visual and
Performing Arts**



PRESENTED BY



Daniel W. Bankhead, AIA, NOMA

General Manager of Facilities Design

Dan Bankhead oversees the management, design, and construction documentation of architects, engineers, and other consultants for Houston ISD's \$2.1 billion 2012 Bond Program. He is also an adjunct professor in architecture and construction science. Dan has directed a wide variety of local, national, and even international projects. In 2009, he became the first African-American president of a Texas (Houston) AIA chapter. He received his Bachelor of Arts and Bachelor of Architecture degrees from Rice University.



Jorge Huerta

Deputy Program Director

Jorge Huerta has over 18 years of experience as a Project Manager in both public and private sector. Jorge has collaborated in a multitude of projects facilitating contract management and program administration services while establishing budgets, schedules, procedures and policies for a multi-project building program. Jorge has provided predesign and preconstruction services for projects that require early program consultation, contract procurement, designer selection guidance, relocation management, program budgets, infrastructure management, post-occupancy functional review and more.



Learning Objectives

Construction Methods: intensive planning and coordination effort that took place in order to keep this school on track to completion.

Building Design: Unique building features and the challenges associated with turning design concepts to reality.

Site Design: Working with limited land in a high-traffic, downtown area.

Acoustics: Design and construction of specialty state-of-the-art acoustic environments for performing and visual arts.





MISSION IMPOSSIBLE?

We're familiar with the challenges of building a new high school.

Well, try building one in Downtown Houston on a land-locked site with a rail line on each side, underground parking, and cooling and heating provided by a third party among other things.

It seemed impossible – no one ever anticipated it would be this successful with an early finish and under 5 warranty items.

The team will discuss challenges and how they were overcome. It's a performance worth seeing.

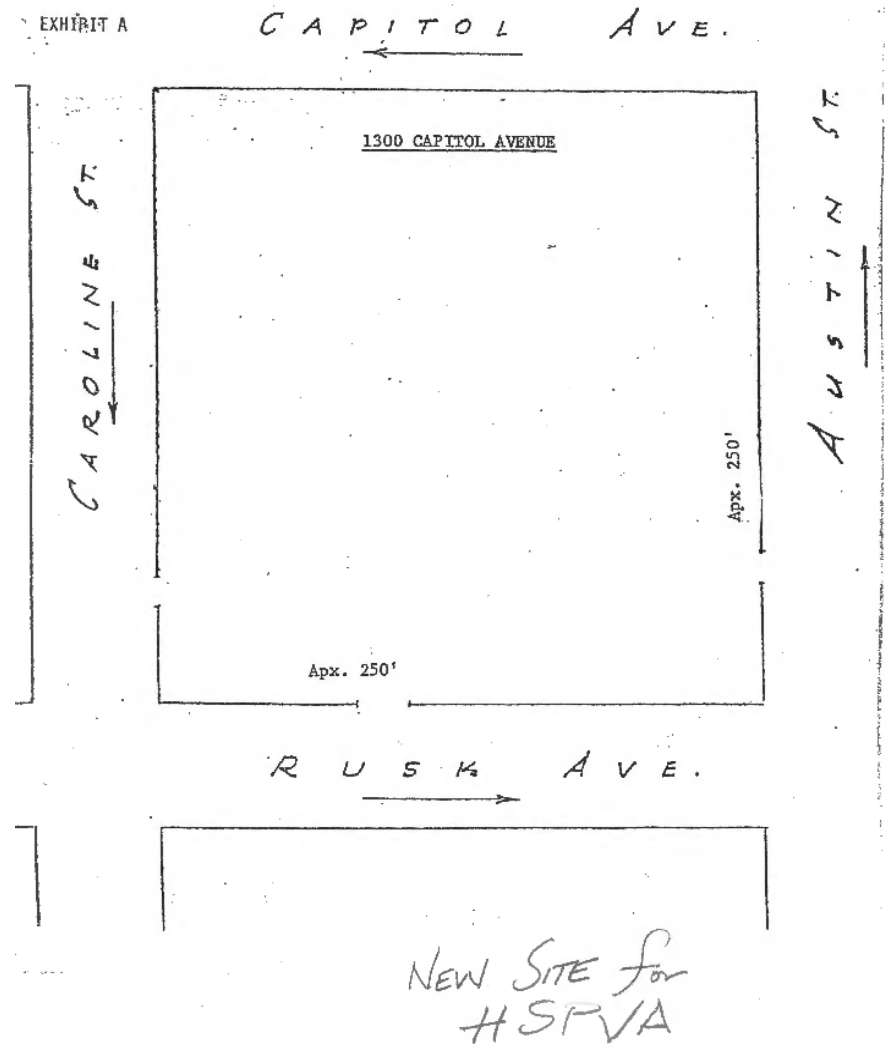
HSPVA's Legacy

HSPVA was born in 1971, it's first home was 3517 Austin St. in Midtown Houston.

In 1982, the school moved to 4001 Stanford Street in the Montrose neighborhood of Houston.

In January of 2019, HSPVA moved to it's new home in the heart of downtown Houston at 790 Austin St.

The new, state-of-the-art Kinder HSPVA comes in at 168,000 square feet and takes up an entire 1.32-acre block downtown.



790 Austin Street's Legacy

HISD purchased the current site at 790 Austin St. back in the 1850s

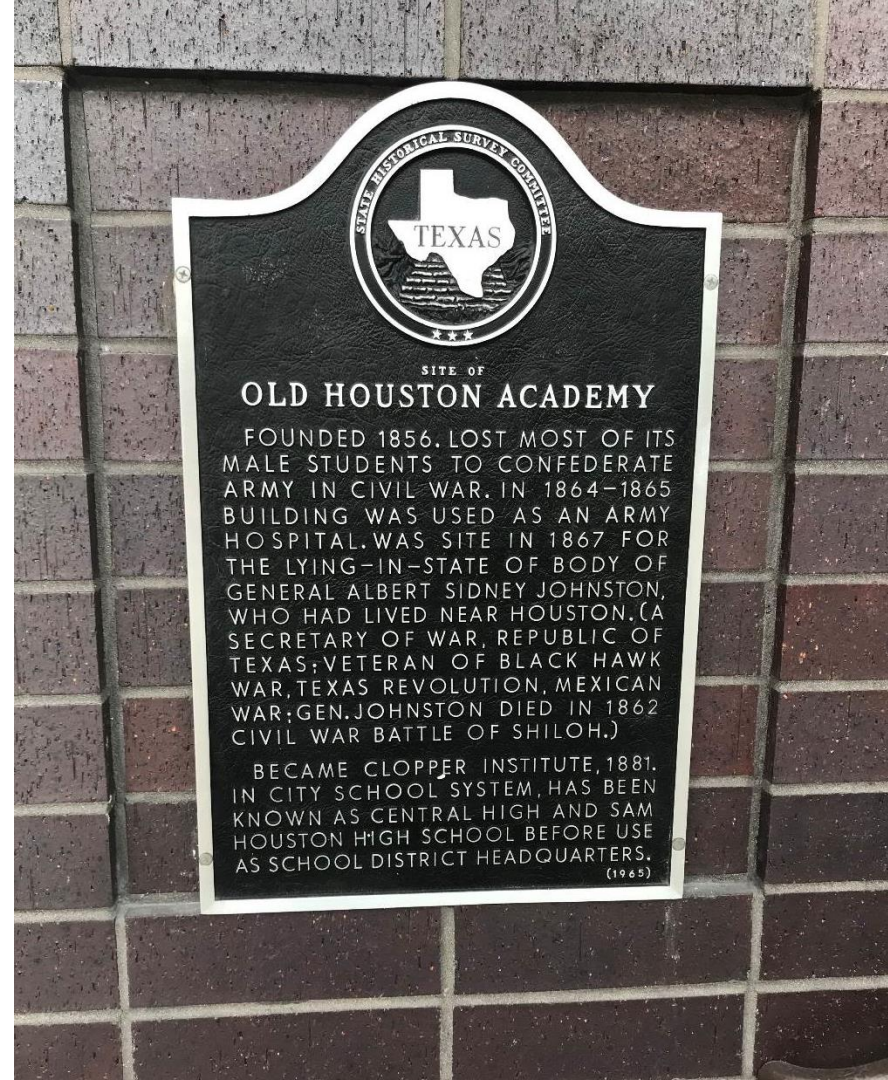
Founded in 1856, the then “Houston Academy” served as a coeducational and nondenominational school. It was a two-story brick building that accommodated 400 students.

Sam Houston gave a speech at the school in December 1860 when it had 160 pupils.

During the Civil War, the academy was closed and converted into a military hospital.

The school was remodeled and renamed the Clopper Institute in 1881.

Since 1894, it has served as two public high schools – Central High School and Sam Houston High School.





790 Austin Street's Legacy

In 1894, ground was broken on Central High School – described as one of the finest high schools in this part of the country.

After burning down in 1919, the school was rebuilt and renamed Sam Houston High School.

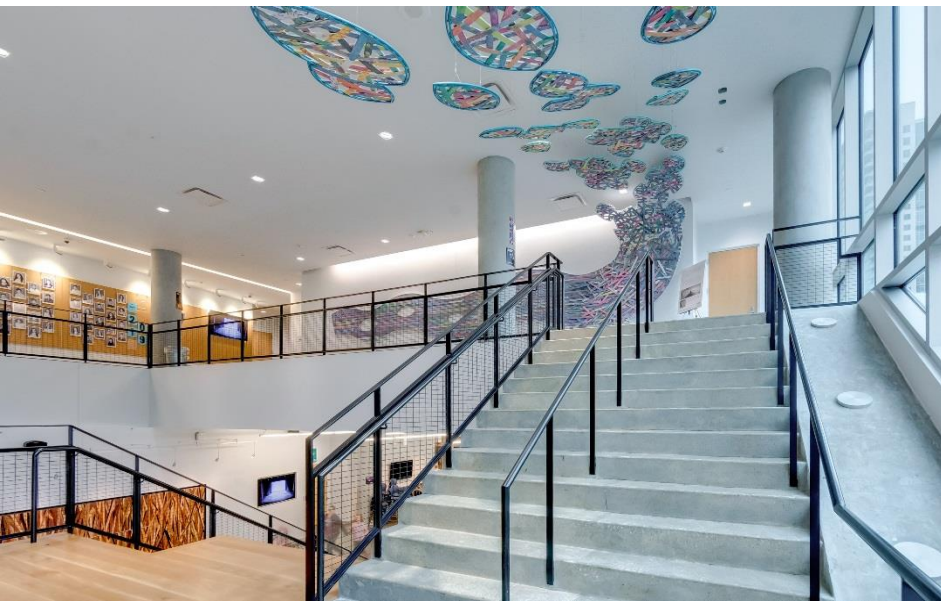
Lyndon Johnson taught public speaking there in 1930.

By the 1950's, Sam Houston High School was relocated and 790 Austin St. became HISD headquarters.

By the early 1970's, the school district moved out and the old school building was demolished.

It served as a parking lot until 2014 when ground was broken for the new High School for the Performing and Visual Arts, returning the site to its former glory.





A Living Canvas

5 stories comprising 168,000 SF of space dedicated to serving 750 students specializing in the arts disciplines

Dramatic front entry with double-high glass windows and wide stairwell

800-seat main theatre with a balcony, catwalk, and fly loft

150-seat recital hall

200-seat secondary theatre

190-seat black box theatre

Modern outdoor areas with sweeping downtown views

Two levels of underground parking

Metrorail lines on either side of the building



Visual and Performing Arts

Accommodates 750 students with room to grow

Specialized arts disciplines

Instrumental Music **Vocal Music**

Dance **Writing** **Visual Arts**

Theatre

Full, rigorous course of academic offerings to compliment the exceptional fine arts curriculum

Nighborhoods Within a Community

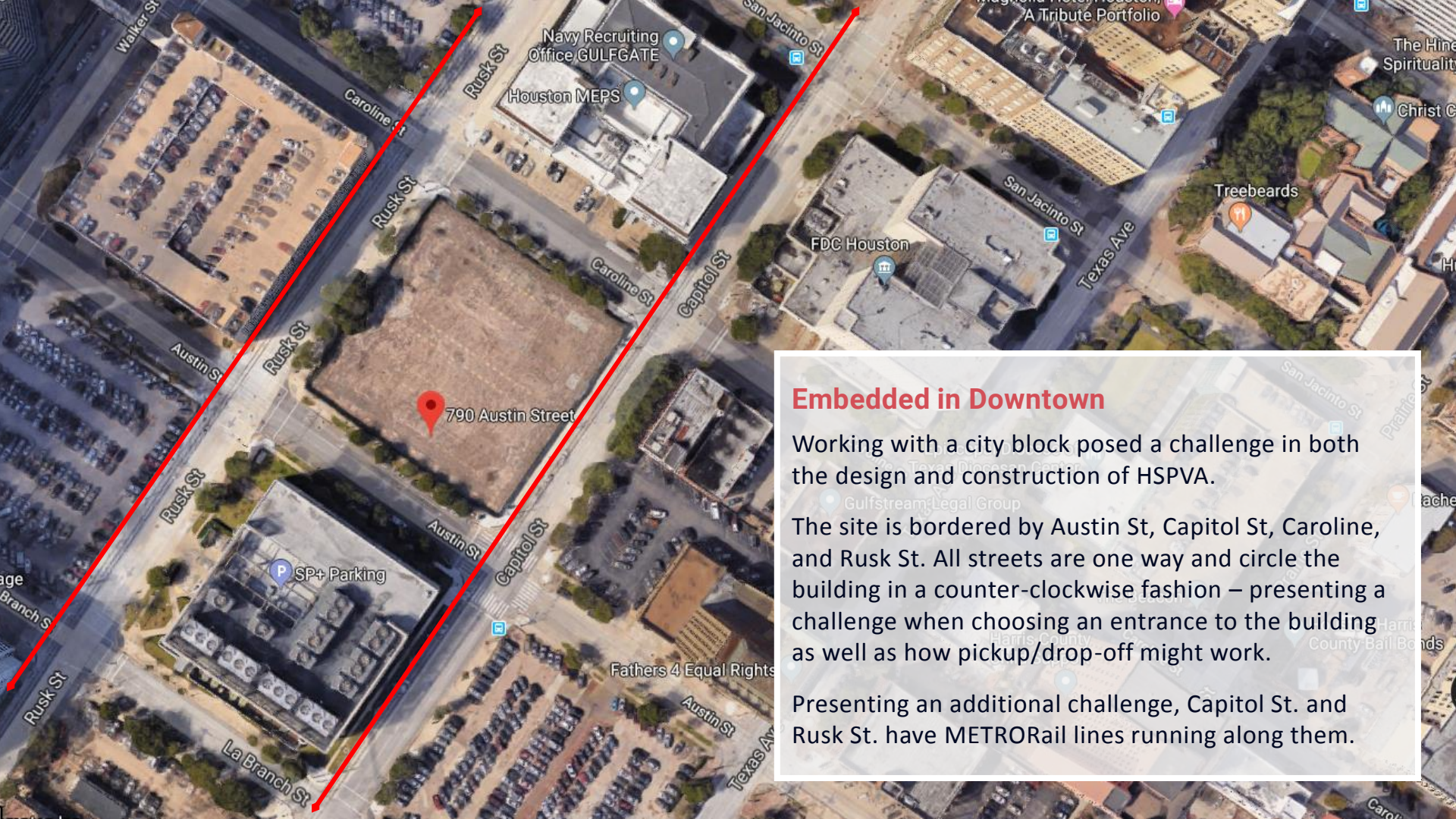
One of this project's chief goals was to retain the school's connected culture.

This challenge was addressed through creative design – the academic and specialty spaces are interspersed throughout. Located near wings of traditional classrooms, each artistic specialty now has a designated “neighborhood” that is custom-fitted accordingly.

All departments also share several two-level common areas as well as access on all five levels to the main theater which serves as the core of the community.







Embedded in Downtown

Working with a city block posed a challenge in both the design and construction of HSPVA.

The site is bordered by Austin St, Capitol St, Caroline, and Rusk St. All streets are one way and circle the building in a counter-clockwise fashion – presenting a challenge when choosing an entrance to the building as well as how pickup/drop-off might work.

Presenting an additional challenge, Capitol St. and Rusk St. have METRORail lines running along them.



Downtown Infrastructure with a Landlocked Site

Metrorail on 2 Sides (Capitol and Rusk Ave)

Access to Site

Vehicular and Pedestrian Traffic – 2 Lane Closures for Duration of Project (Austin & Caroline)

Parking for Employees and Contractors

Equipment and Material Deliveries – Utilized Just-In-Time

Material Staging and Laydown Areas

Metro Power Distribution

Public Works

Gas Lines, Fiber Optic Lines

GPR Imaging



Outsourced Heating & Cooling

Another challenge presented by HSPVA was providing heating and cooling to the building.

Fortunately, Enwave Houston (the company that provides chilled water to air condition 24 buildings including Minute Maid Park) happened to be located directly across the street, so we didn't have to look very far.



The Construction

Excavation

- About 30° Below Grade to Bottom of Footings

Shoring up the Sides with Structural Whalers and Kickers Inside the Excavation

- H-piles with timer shoring, and drilled tie-backs with grout fill and post tensioning

5 Story Fully Grouted CMU Wall

- Locks sound inside performing space, keep unwanted noise out
- Challenges for in-wall rough-in

Enhanced Building Systems Coordination

- Complex theatrical systems with lighting and audio visual

Shared Cooling & Power with Downtown Grid







Super Bowl LI

Significant Increase in Pedestrian Activity

- 200K people descended on downtown Houston

Street Closures

- Downtown district required that lane closures be turned into temp sidewalks for the week of Super Bowl

Deliveries Impacted

Schedule Impacted

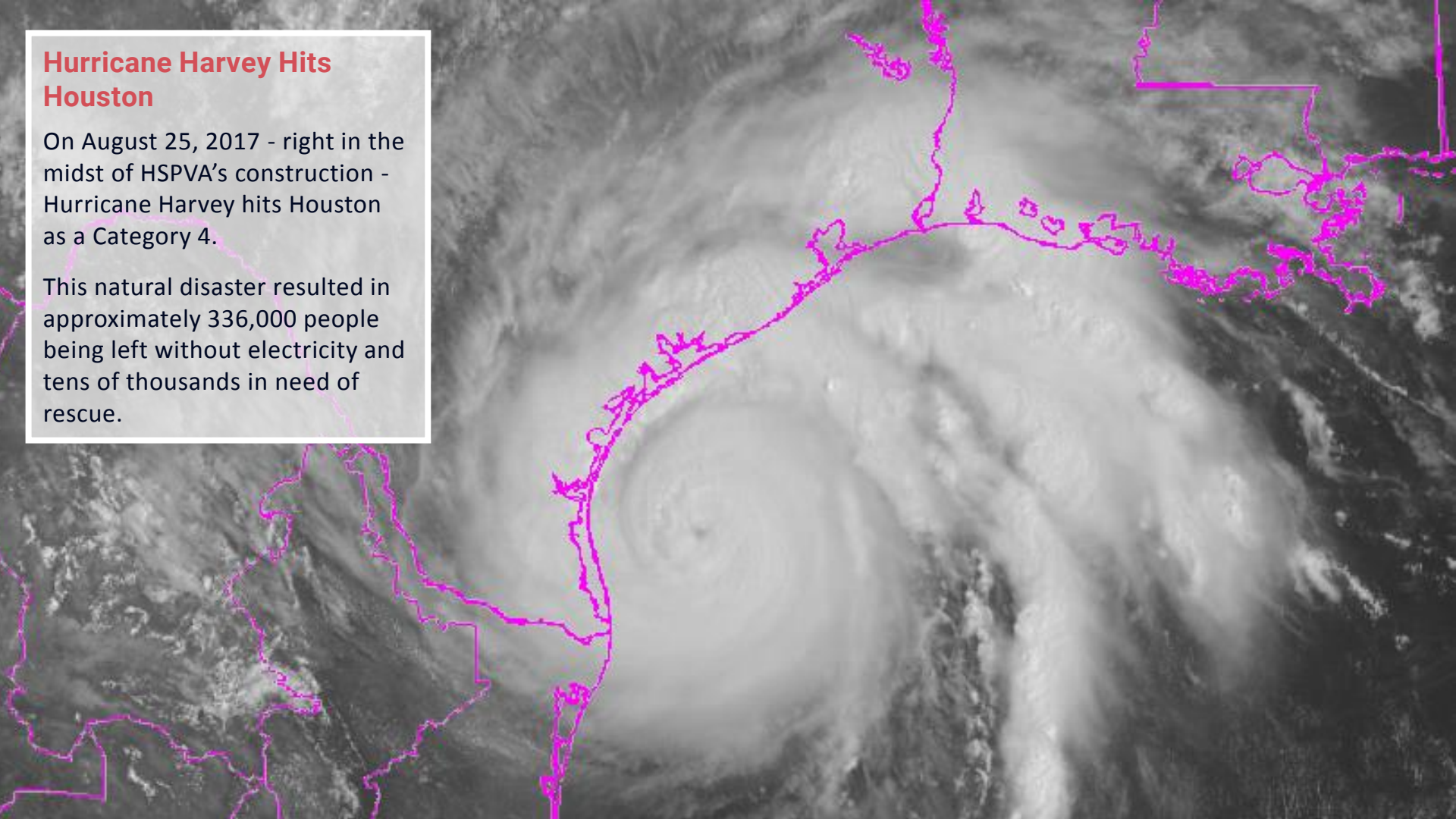
Enhanced Safety and Security Around Site



Hurricane Harvey Hits Houston

On August 25, 2017 - right in the midst of HSPVA's construction - Hurricane Harvey hits Houston as a Category 4.

This natural disaster resulted in approximately 336,000 people being left without electricity and tens of thousands in need of rescue.



Hurricane Harvey

Access to Site Impacted

- Streets under water
- Jobsite was completely shut down for a full week, except for emergency water pumping crew

Loss of Power

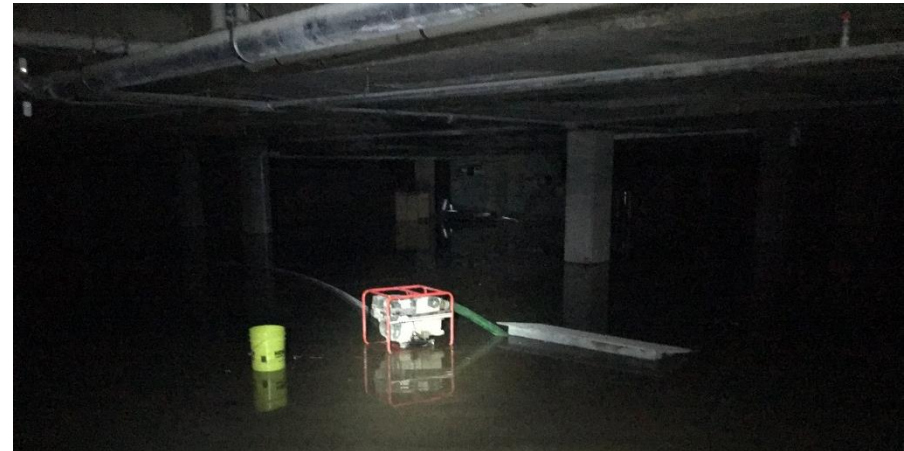
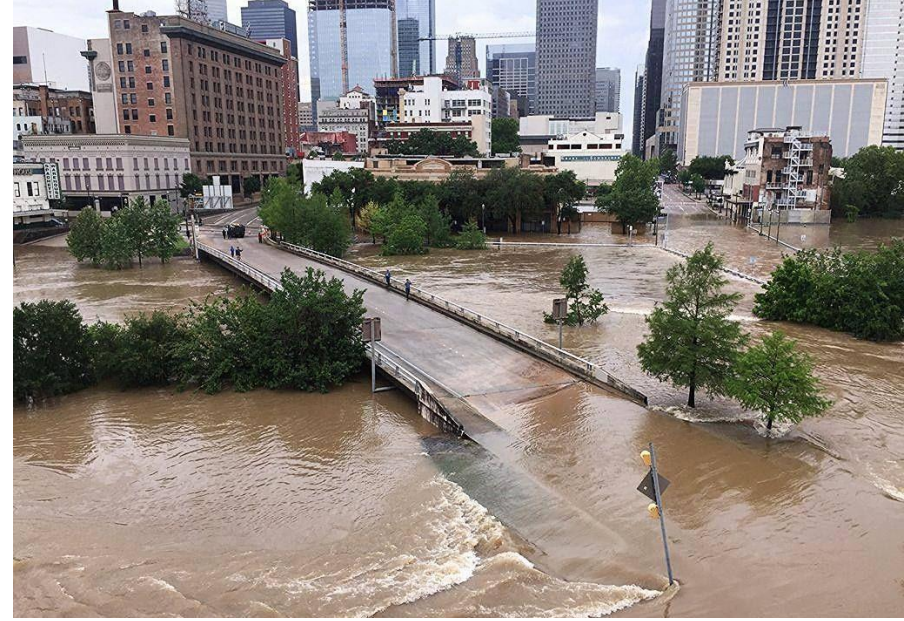
- Basement sump pumps failed when power went out, basement took on about 8" of water before gas was powered back up

Storm Damage

- Building was not dried in when the storm hit
- Most significant damage/cost was to the roof - was about 80% complete and temp terminations failed, causing most of the roof insulation to get saturated with rain water.

Labor shortages

- Largest labor impact was to the drywall/framing trade
- Demand for residential repair drove labor prices up





KINDER HIGH SCHOOL FOR THE PERFORMING AND VISUAL ARTS

GREAT ESC





2020-2021 HIGHLIGHTS

- September 25
- October 25
- November 25
- January 25
- February 25
- March 25
- April 25
- May 25





2018-2019 HAPPENINGS

- September 16
- October 31
- December 16
- January 11
- February 14
- March 8
- April 18

May 20 (under construction)


HSP/TA



NO FOOD OR DRINK
IN THE THEATRE

Communal dining
and gathering
areas flow
together to create
a collaborative
feel





Outdoor patio
areas take full
advantage of the
downtown
location



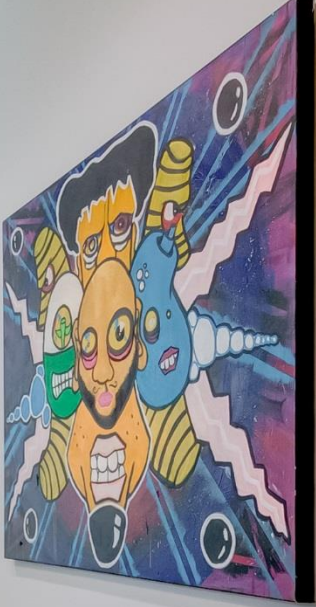




An onsite full gym is available for students use



STAR
A



Polished
concrete
hallways feature
student art



EXIT

EXIT

EXIT

EXIT

EXIT

EXIT

EXIT

EXIT

EXIT

EXIT

EXIT

EXIT

EXIT

EXIT

EXIT

EXIT

EXIT

EXIT

EXIT

EXIT

EXIT



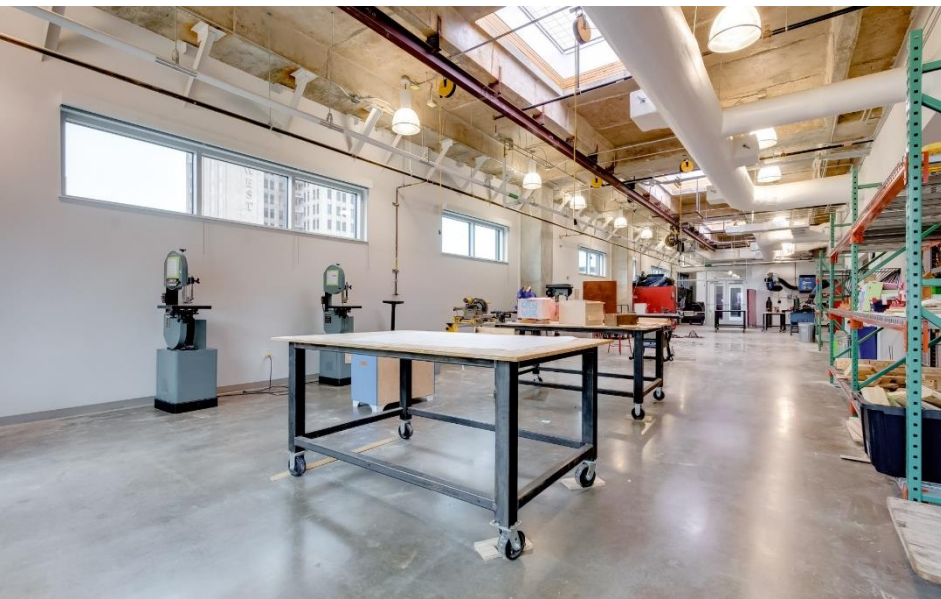
Communal areas
are peppered
throughout the
building





Integration of
levels maintains
culture and energy
of previous
HSPVA





Visual Arts

Serves about 150 students

Course offerings include:

Advertising Design

Animation

Art Awareness

Art Criticism/Critical Thinking

Art History

Ceramics

Conceptual Concerns

Drawing

Foundations of Design

General Sculpture

Metal Sculpture

Mixed Media

New Experiences

Painting

Photography

Photoshop

Printmaking

Video

Woodshop



s2s5u



Whiteboard with handwritten notes and diagrams. The text includes:

- Spomeni...
- 1) If you are...
- 2) ...
- 3) ...
- 4) ...
- 5) ...

Other sections include:

- Alter...
- Alter...
- Alter...
- Alter...









Studio spaces
are outfitted with
cutting edge
machinery



Dance

Serves about 100 students

Course offerings include:

Ballet

Modern Dance

Jazz

Musical Theatre

Tap Dance

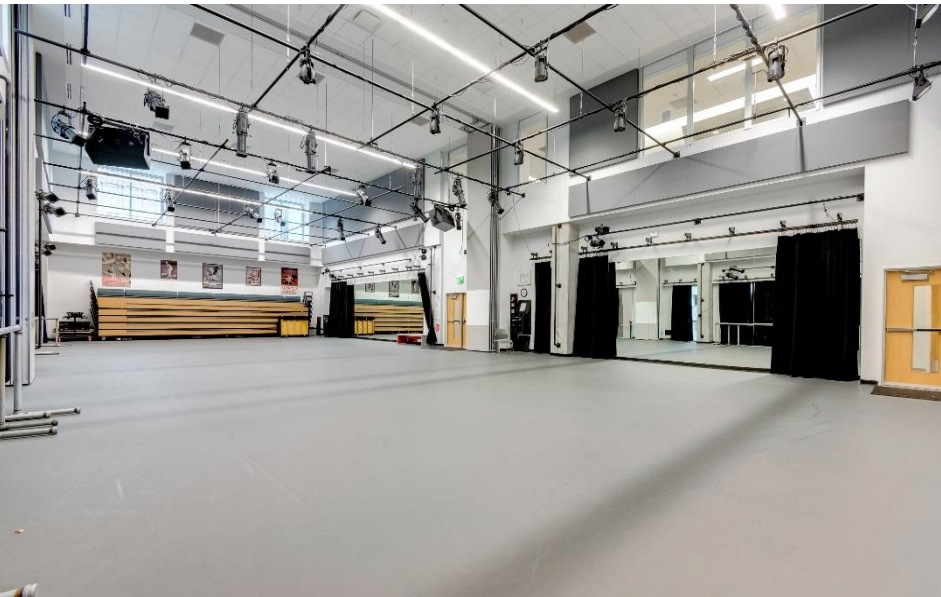
Dance Photography

Dance Survey

Dance History


Repertory

Composition

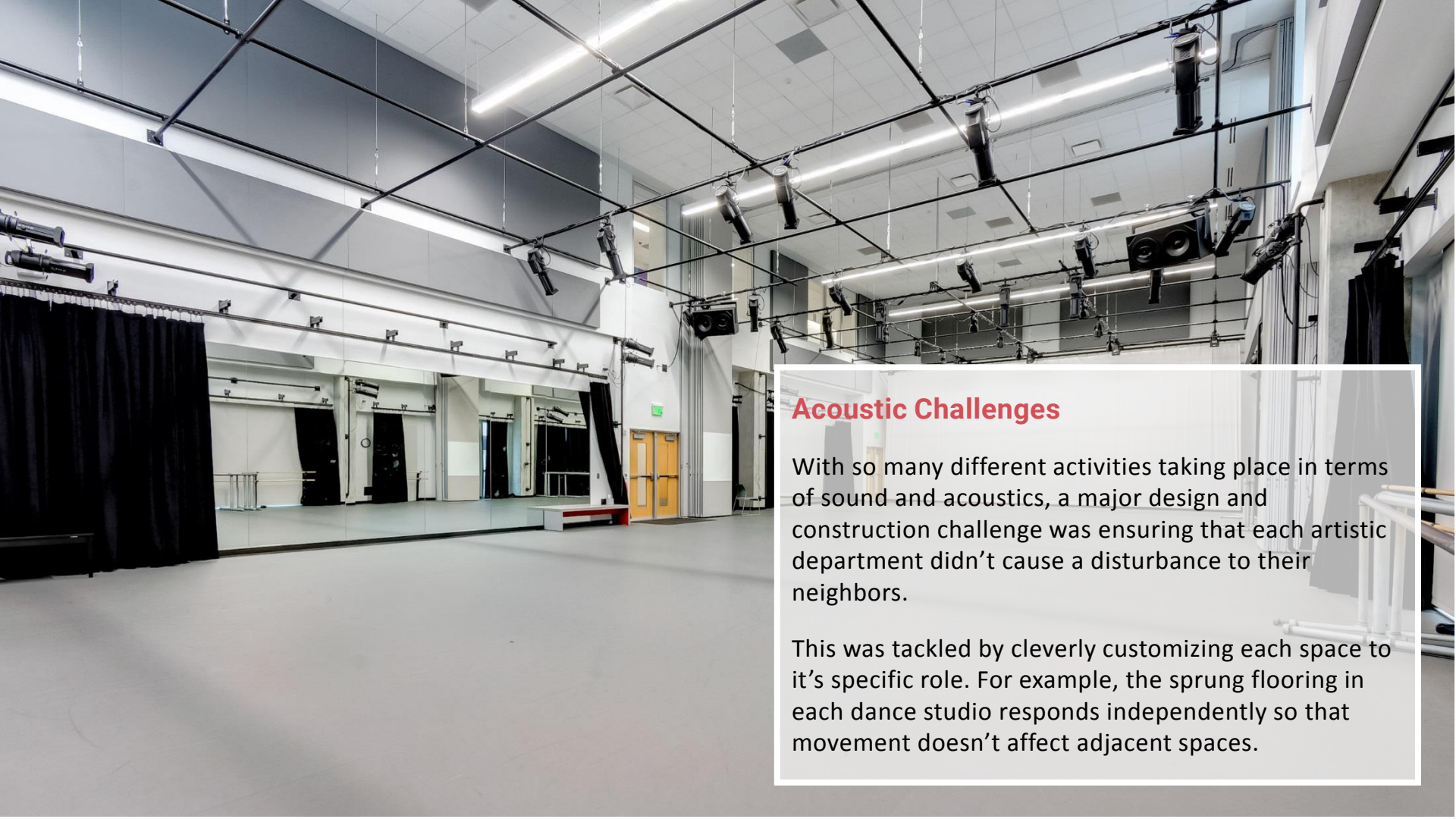




Partitions and retractable seating make the most of space



Windows overlooking dance studios allow other students or visitors to look in on practices



Acoustic Challenges

With so many different activities taking place in terms of sound and acoustics, a major design and construction challenge was ensuring that each artistic department didn't cause a disturbance to their neighbors.

This was tackled by cleverly customizing each space to its specific role. For example, the sprung flooring in each dance studio responds independently so that movement doesn't affect adjacent spaces.

Sophisticated
costume areas
for dance and
theatre
performances





Instrumental & Vocal Music

Serves about 330 students

Course offerings include:

Classical Voice

Orchestral Music

Concert Band Music

Jazz

Mariachi

Popular Music

Music Theory

Composition

Improvisation

Music History

Form and Analysis

Vocal Production

Sight-Singing

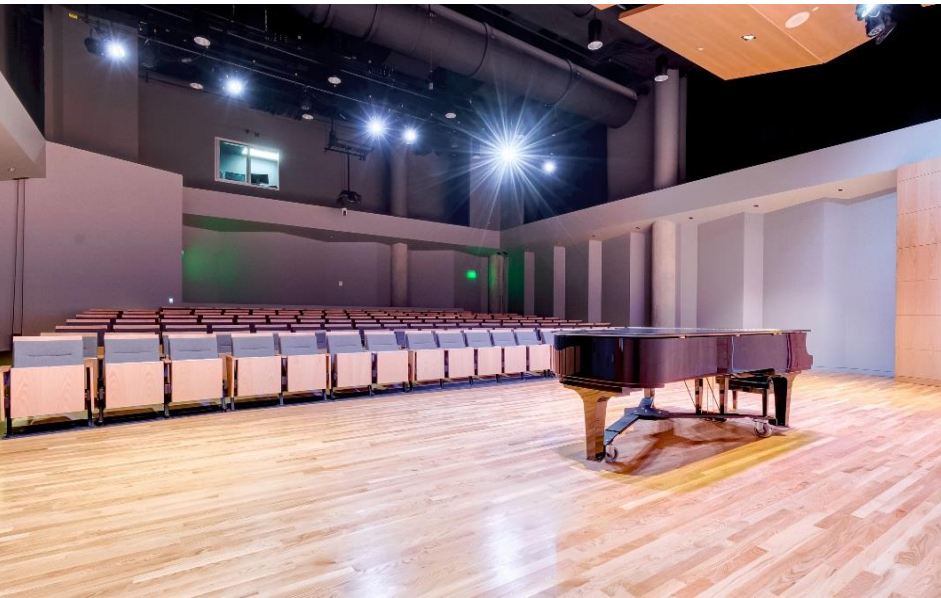
Ear Training

Instrumental Technique

Chamber Music

Handbells

Class Piano



VOCAL

537



FN

A private piano recital hall with a grand piano and tiered seating. The room features a polished wooden floor, a dark ceiling with recessed lighting, and a balcony area. The piano is positioned on the left side of the stage, and the seating is arranged in rows on the right. The overall atmosphere is intimate and professional.

A private piano recital hall features intimate seating and optimal acoustics







The campus
features 16
state-of-the-art
soundproof
practice rooms



Creative Writing

Serves about 100 students

Course offerings include:

Short Story Writing

Poetry

Dramatic Writing

Acting

Digital Storytelling

Publishing

Editing



Creative writing
communal
areas for
reading &
sharing work





HOMewood SUITES



Optional
partition for
multi-use space



Theatre

Serves about 135 students

Course offerings include:

Acting

Voice and Movement

Design

Theatre History

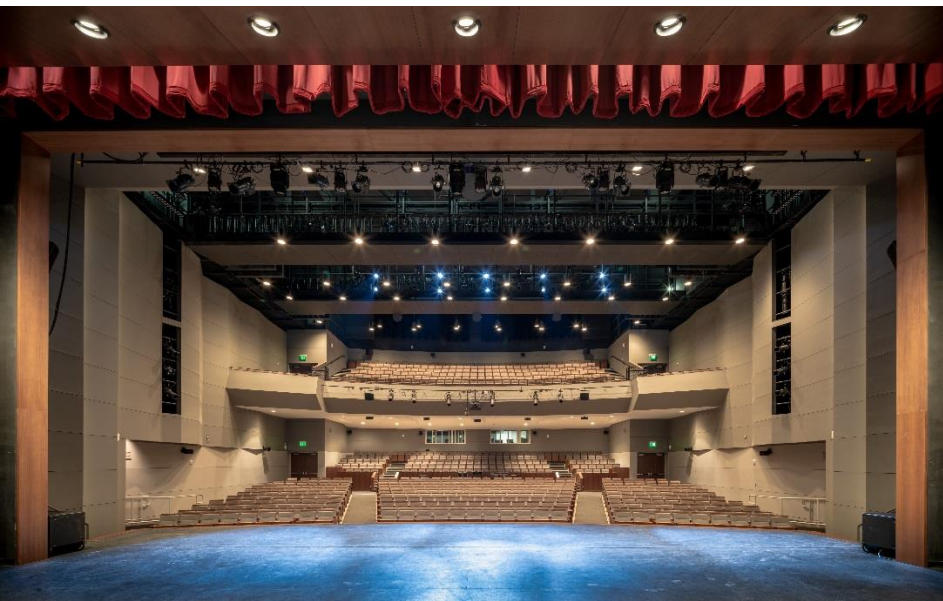
Musical Theatre

Dramaturgy

Play-Writing

Directing

Stage Management





**Denney Theatre,
the heart of the
campus, can seat
up to 800.**









Denney
Theatre features
an impressive
catwalk

A wide-angle photograph of a black box theatre. The room is filled with rows of beige upholstered seats with dark metal frames, arranged on both sides of a central aisle. The stage area at the far end is partially obscured by blue curtains. The ceiling is a complex grid of metal trusses with numerous stage lights and equipment. The walls are dark and feature large, light-colored panels. A green exit sign is visible on the right wall. The overall atmosphere is professional and modern.

A black box theatre serves as flexible performance space



Ox Blue®

SPECIAL THANKS

It took an excellent
team to make
HSPVA such a great
success

HISD

Derrick Sanders
Officer of Construction Services
Andreas Peebles
General Manager of Construction Services
Daniel Bankhead
General Manager of Facilities Design
Meredith Smith
Senior Manager of Construction Services
Lemont Williams
Construction Services Representative
Christine Manrique
Document Control Administrator
Tonya Savoie
Senior Manager of Quality Assurance
James Moore
Senior Manager of Capital Project Accounting
Deepali Kansal
Team Lead of Capital Project Accounting

Rice & Gardner Consultants

James Rice
President, Project Director
Jorge Huerta
Project Assistant Director
Humberto Bautista
Senior Project Manager
Amanda Andrus
Project Controls

Professional Contracted Vendors

Construction Manager at Risk - McCarthy Buildings Companies, Inc.
Architect - M. Arthur Gensler Jr. and Associates, Inc.
Associate Architect - Harrison Kornburg Architects
Civil Engineer - Ward, Getz & Associates, Inc.
Structural Engineer - En Sight
MEP Engineer - Shah Smith and Associates
Acoustical and AV Consultant - Jaffe Holden
Theater Consultant - Wrightson, Johnson, Haddon & Williams, Inc.
Landscape Architect - Asakura Robinson Company
Foodservice Consulting - Worrell Design Group
Surveying Consultant - Kuo & Associates
Geotechnical Consultants - Geotest Engineering, Inc.
Geotechnical Consultants - Terracon Consultants, Inc.
Environmental Site Assessment Consultant - Raba Kistner
Commissioning Consultant - Page Southerland Page, Inc.
Traffic Engineering Consultant - Gunda Corporation
Materials Testing Consultant - Ninyo & Moore, Geotechnical and
Environmental Consultants
Roofing Inspector and Consultant - Raba Kistner Environmental
HVAC Testing and Air Balancing Consultant - Online-Air Balancing Co.
Technology Supply and Consultant - Netsync Network Solutions, Inc.
Technology Supply and Consultant - MCA Communications, Inc.



Q&A

