



NEW COMPREHENSIVE
===== **vs.** =====
SPECIALIZED



A4LE is a Registered Provider with ***The American Institute of Architects Continuing Education Systems (AIA/CES)***. Credit(s) earned on completion of this program will be reported to AIA/CES for AIA members. Certificates of Completion for both AIA members and non-AIA members are available upon request.

This program is registered with ***AIA/CES*** for continuing professional education. As such, it does not include content that may be deemed or construed to be an approval or endorsement by the AIA of any material of construction or any method or manner of handling, using, distributing, or dealing in any material or product.

Questions related to specific materials, methods, and services will be addressed at the conclusion of this presentation.

Course Description

Houston ISD worked with Page, DLR Group and stakeholders to design replacements for the High School for Law & Justice and North Forest High School. Students entered dramatically new learning environments in 2018. One launches students into law enforcement and criminal justice careers; the other comprehensively serves a disadvantaged community. How do the new campuses impact the students and community?



Learning Objectives

1. Participants will compare and contrast facility design for legal and justice career education versus comprehensive high school education.
2. Participants will learn how design strategies affect the student experience via stories and metrics.
3. Participants will hear from a School Principal who advocated for program-specific design and a District Design Manager who promoted equitable standards.
4. Participants will be exposed to the strategy of two new school projects serving to uplift transitional neighborhoods.

Houston ISD: HS for Law & Justice, North Forest HS



Wendy Heger
AIA, LEED AP BD+C
Principal, Page



Daniel W. Bankhead
AIA, NOMA
General Manager, Facilities
Design, Houston ISD



Carol Mosteit
Principal
High School for Law &
Justice



Elaine Lee
AIA
Designer/Senior Associate,
Page



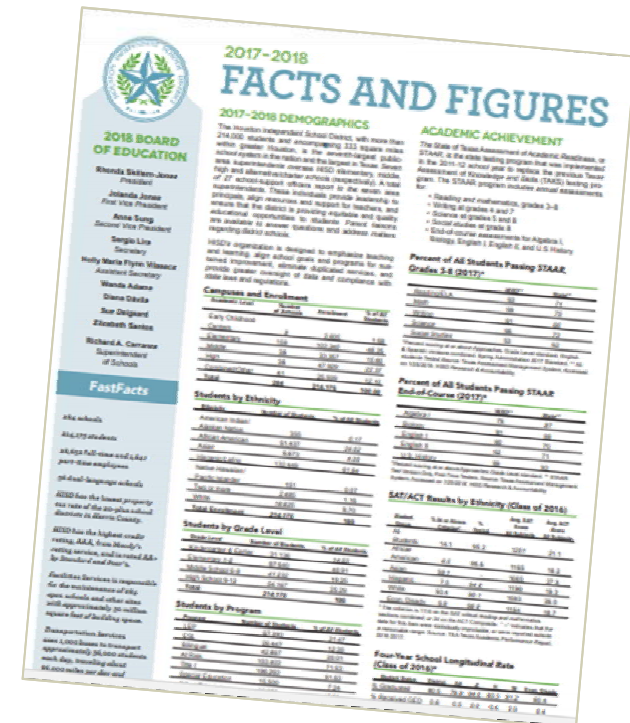
Taryn Kinney
AIA, LEED AP
Principal, DLR Group

Introduction Speakers

Houston ISD: Who Are We?

Facts & Figures

- Largest district in Texas, 7th largest in United States
- 284 Schools
- 215,000 Students
- 75% Low Income
- 86% Hispanic and African-American
- 100 Languages Spoken
- Total Building Area: 29.3 million sq. ft.



Overview of Houston ISD Bond Program (and State-funded North Forest High School)

Houston ISD: A Little History

Our Capital Improvement Programs



1998 Bond: \$678 Mill. (Safety/Security & HVAC)

More than 100 schools and support facilities
Safety/security



2002 Bond: \$808.6 Mill. (HVAC, Campus Rebuilds)

Roughly 60 campuses, including 5 early childhood centers
Playground equip., school gyms, transportation facilities



2007 Bond: \$805 Mill. (MEP & Safety/Security)

Almost 200 campuses
Safety/security, secondary science labs, athletic facilities



2012 Bond: \$2.1 Bill. (High School Rebuild/Renov.)

40 schools, including 29 high schools
Technology, safety/security, athletics, middle school restrooms

Overview of Houston ISD Bond Program (and State-funded North Forest High School)

Houston ISD: A Little History



2012 Facilities Capital (Bond) Program

- Voters Approve \$1.89 Billion--Largest Bond Program in Texas History
- Replace 22 Existing High Schools
- Partially Replace 3 High Schools
- Renovate 4 High Schools
- Convert 5 Elementary Schools into K-8 Campuses
- Build 2 New Elementary School Campuses
- Replace/Complete 2 New Middle School Campuses

Overview of Houston ISD Bond Program (and State-funded North Forest High School)

North Forest HS: A Little Background

North Forest ISD Closed in July 2013

- A School District In Northeast Houston, Texas
- Established In The Early 1920s
- 100% of Students Classified as Economically Disadvantaged
- Closed by Order of the State and Absorbed Into the Houston Independent School District
- Houston ISD Requested State Funding for Facilities Improvements



Overview of Houston ISD Bond Program (and State-funded North Forest High School)

Comprehensive (NFHS) vs. Magnet (HSLJ)



CAPACITY: 1,630 students

SIZE: 205,000 SF

SCOPE: Multi-focus, Varied Pathways
Agriculture, Law & Public Safety,
Information Technology, Performing Arts



CAPACITY: 750-900 students

SIZE: 115,500 SF

SCOPE: Focused Pathways
Law Enforcement and Criminal Justice



1

High School For
Law & Justice

2

North Forest
High School

3

How Different?

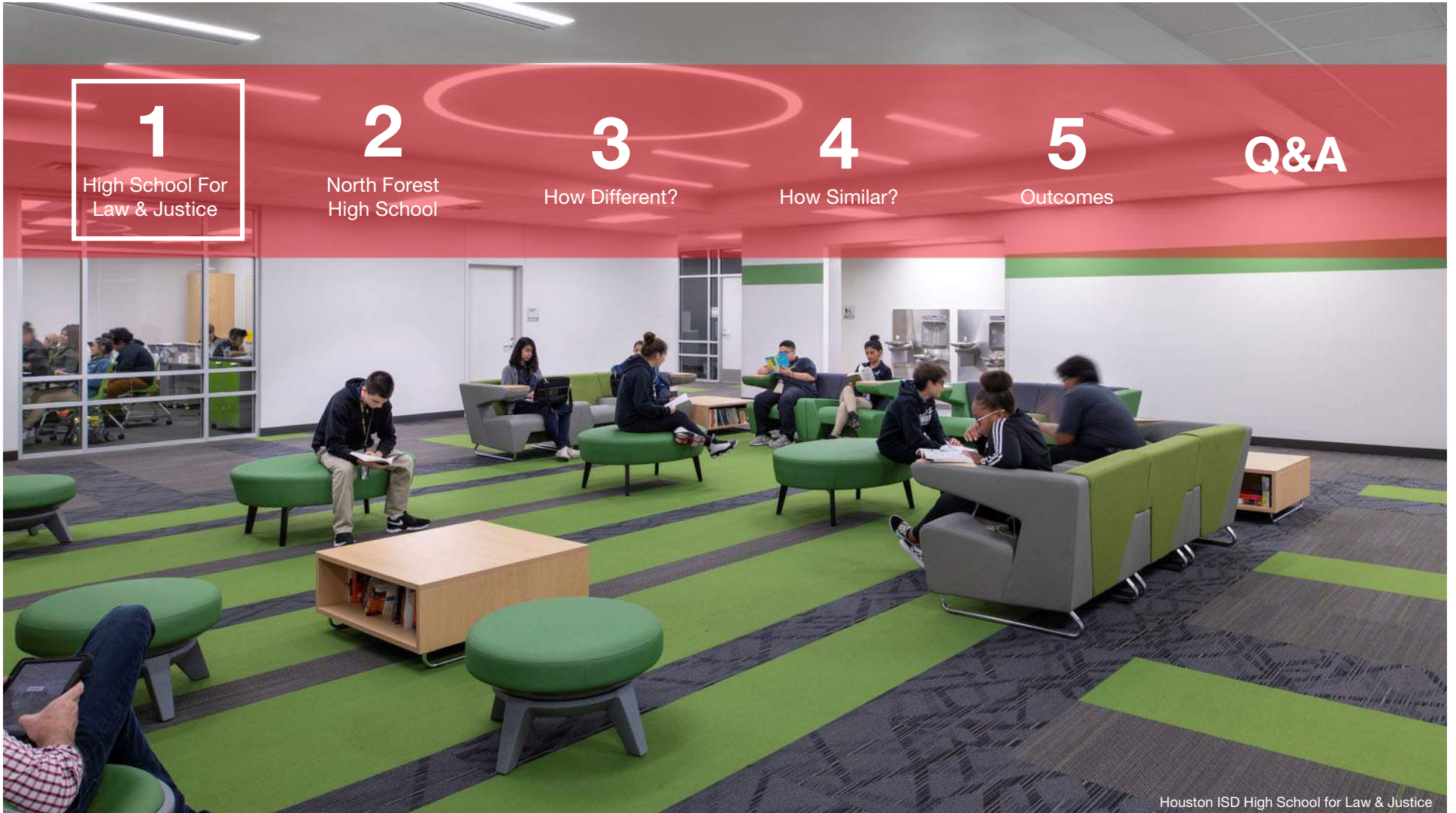
4

How Similar?

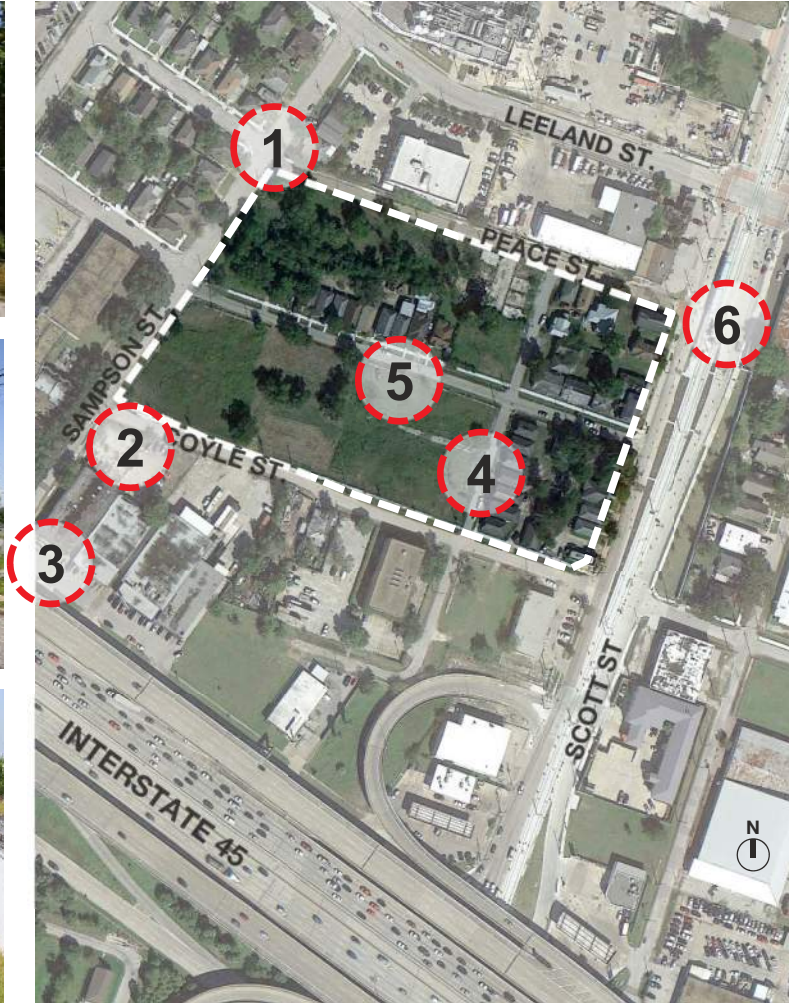
5

Outcomes

Q&A

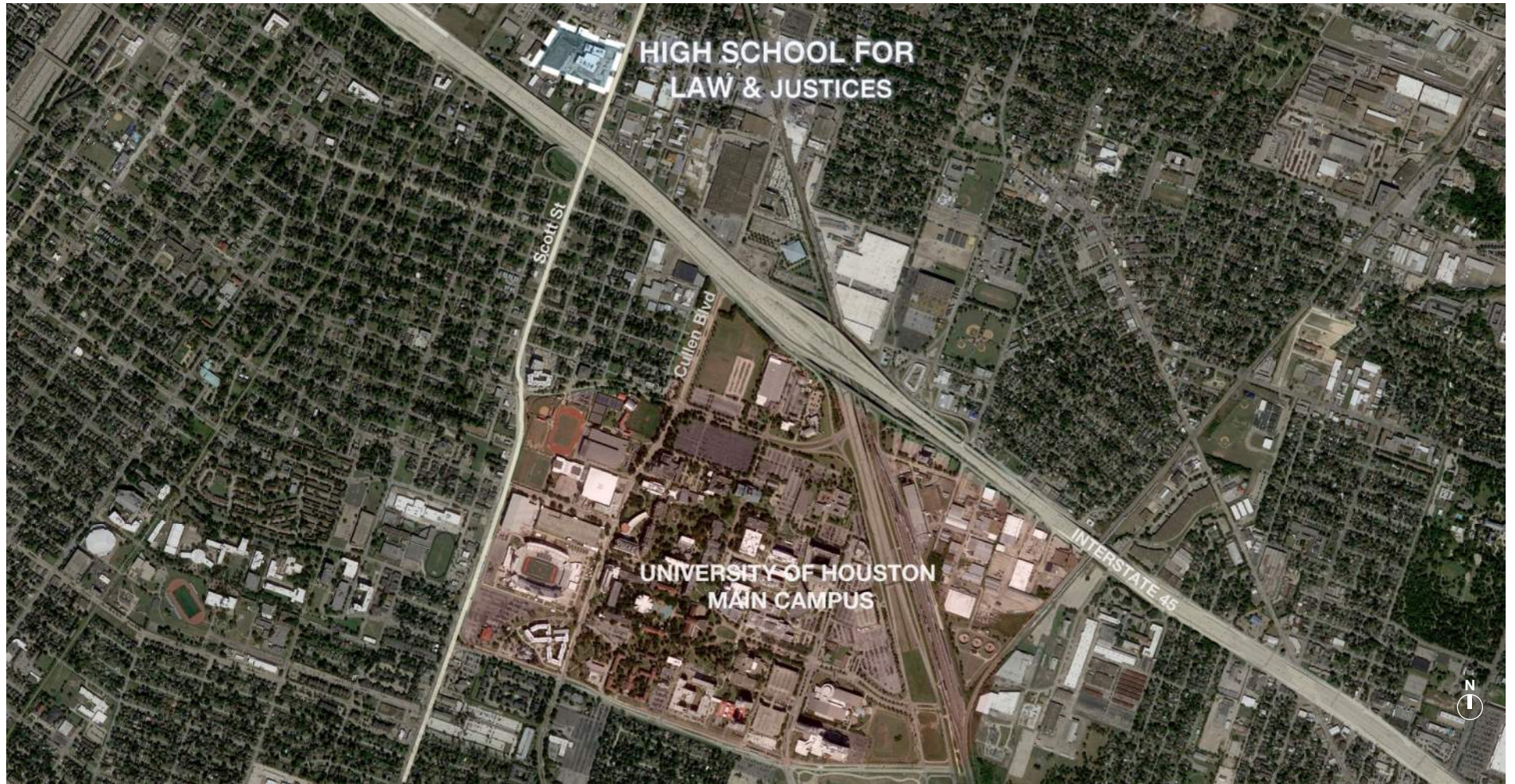


Houston ISD High School for Law & Justice



High School for Law & Justice

Context



High School for Law & Justice

Context



High School for Law & Justice



Context



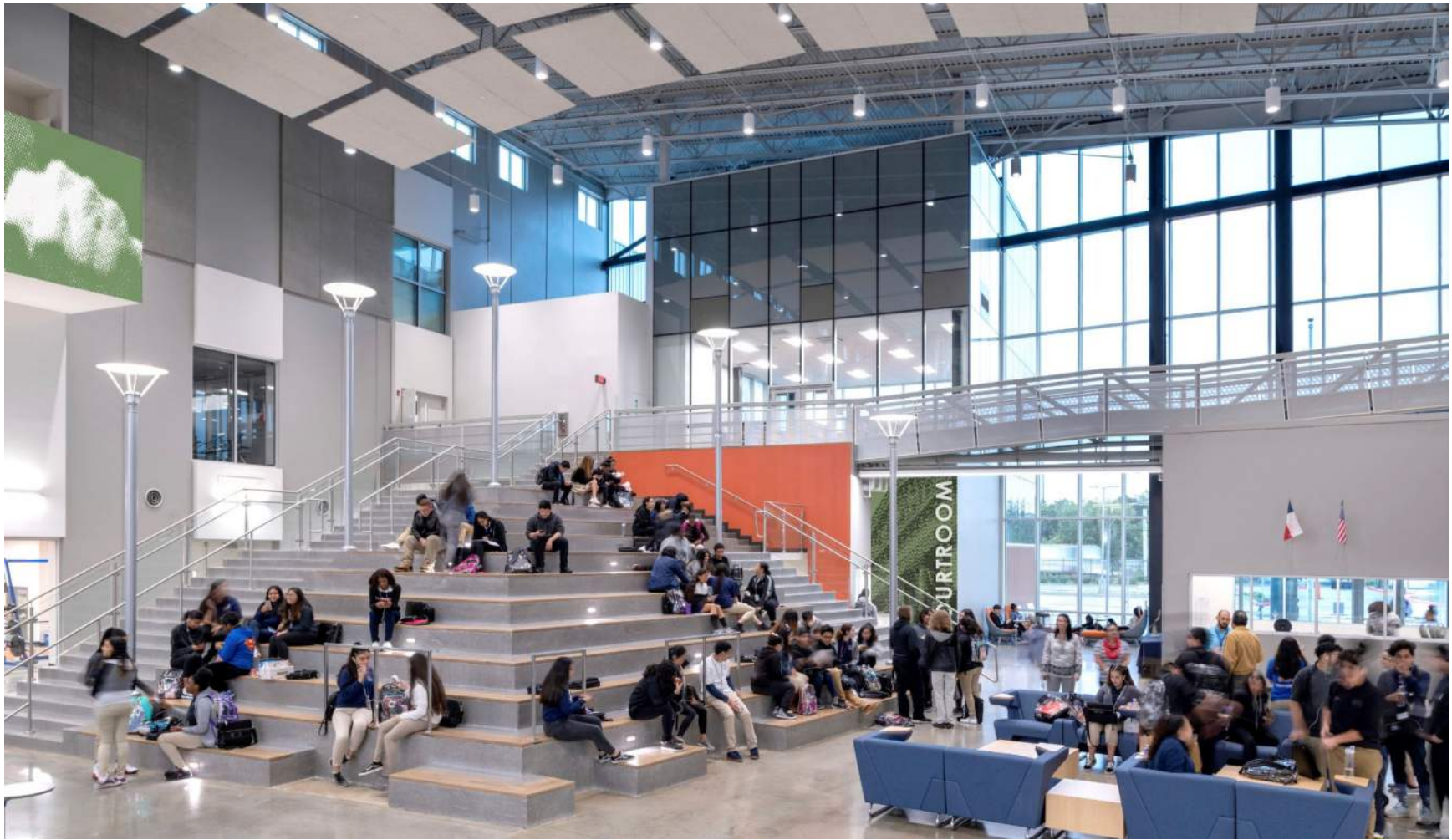
High School for Law & Justice

Context



High School for Law & Justice

Context



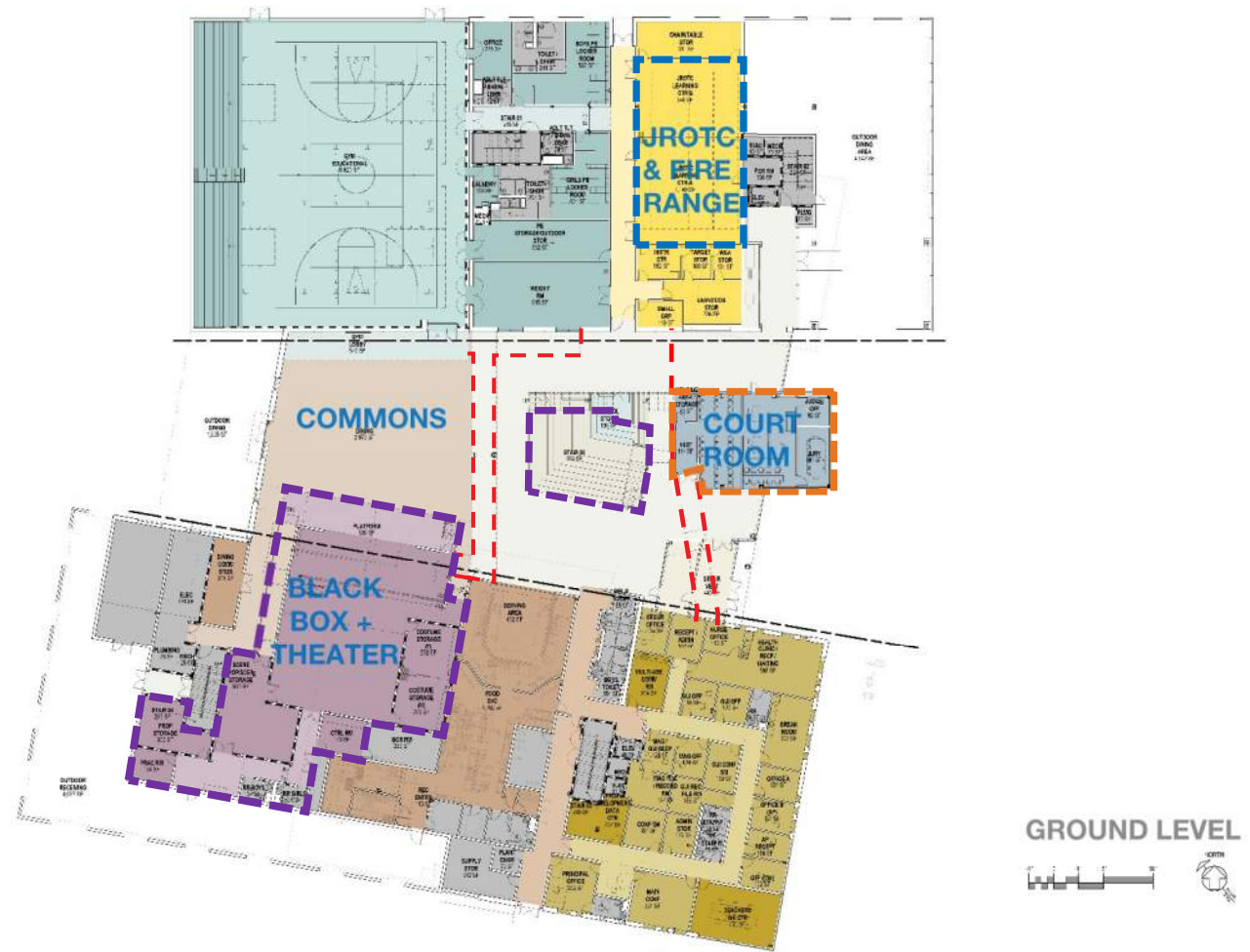
High School for Law & Justice

Unique Features



High School for Law & Justice

Unique Features



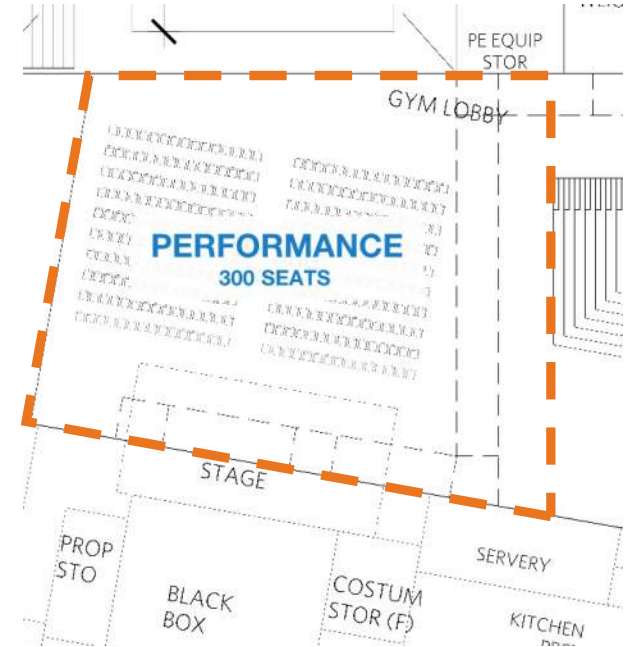
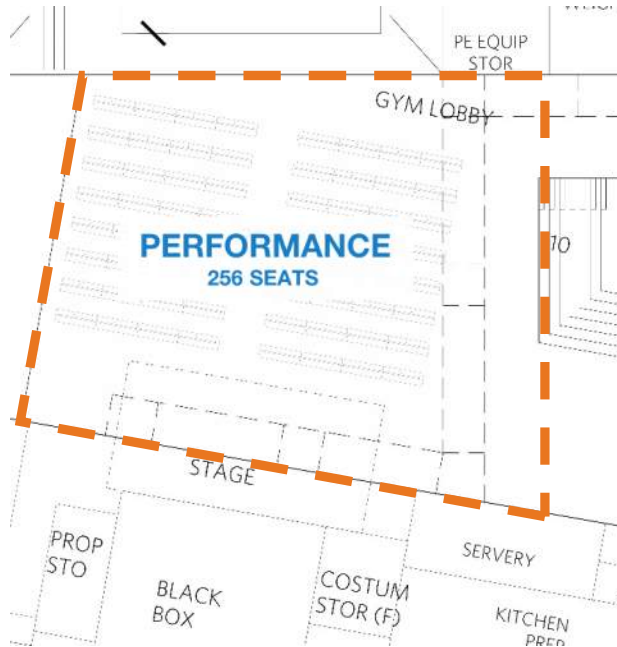
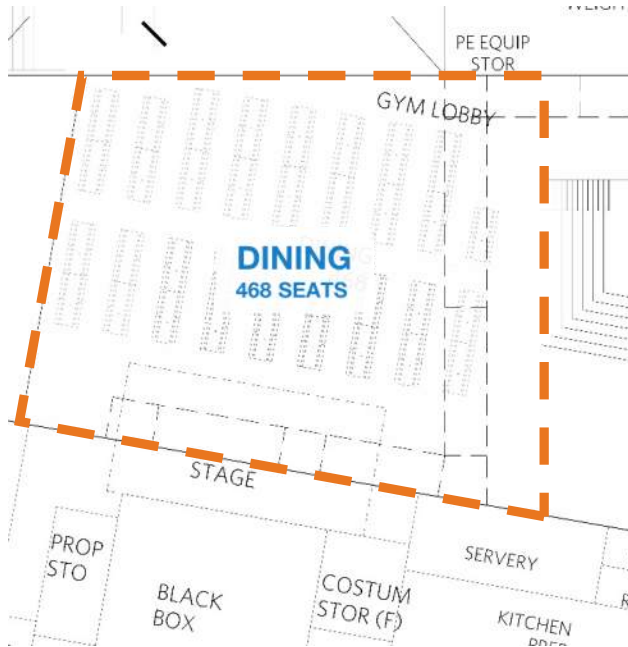
High School for Law & Justice

Unique Features



High School for Law & Justice

Unique Features



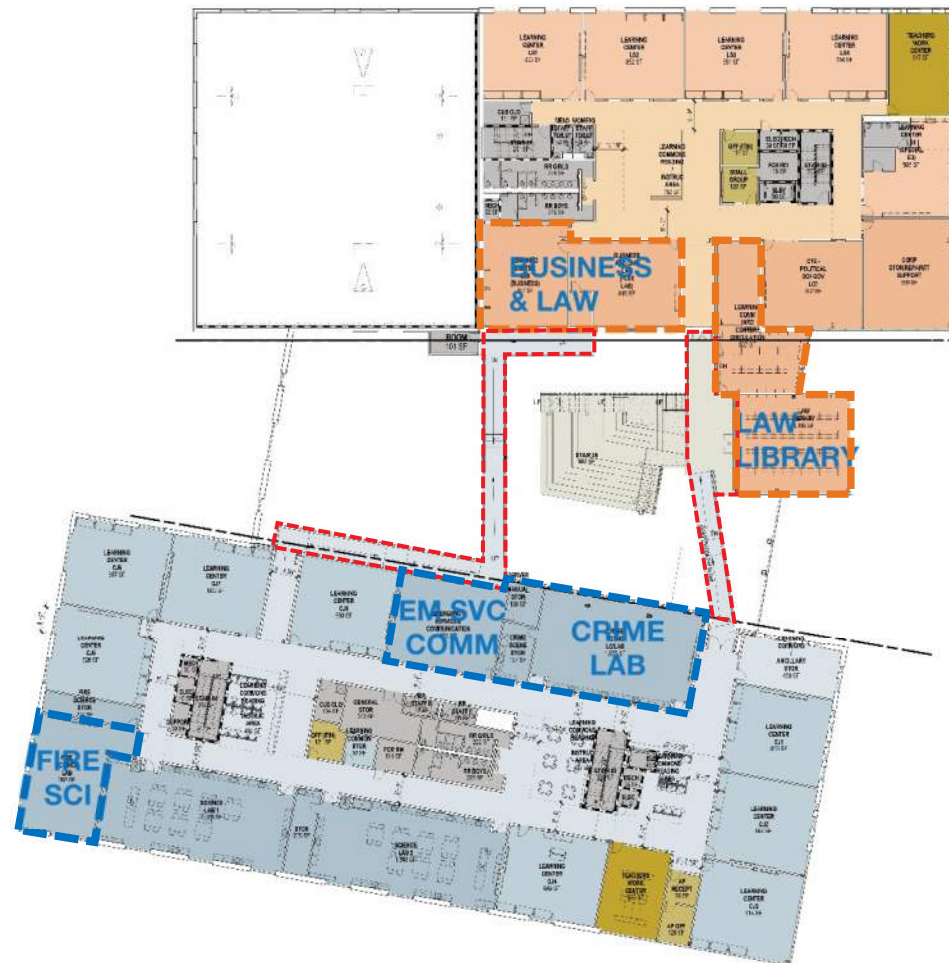
High School for Law & Justice

Unique Features



High School for Law & Justice

Unique Features



LEVEL 2



High School for Law & Justice

Unique Features

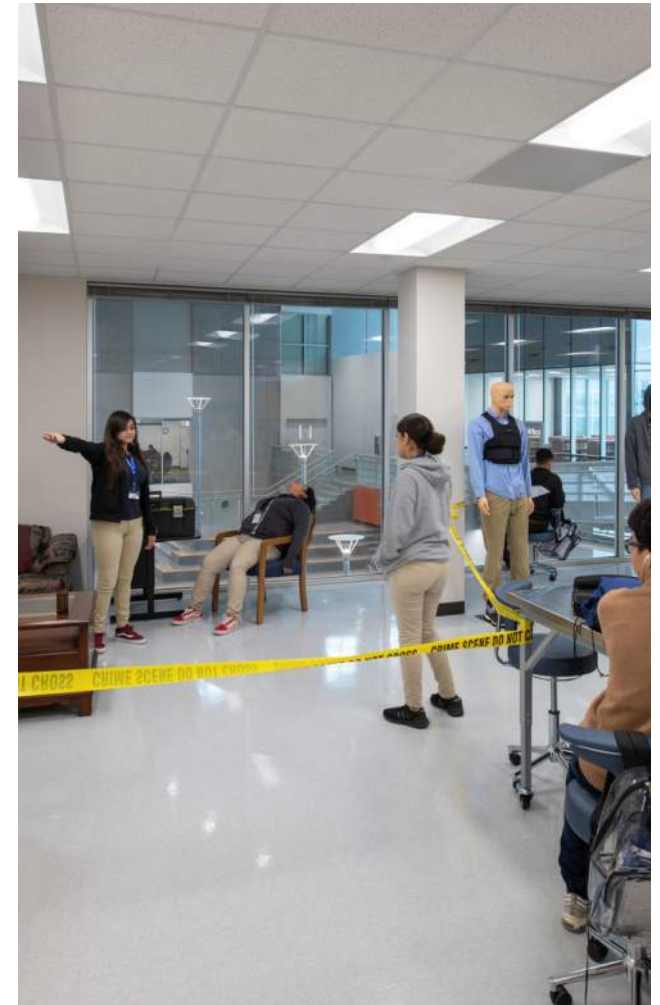


High School for Law & Justice

Unique Features



High School for Law & Justice



Unique Features



High School for Law & Justice



Design Strategies

1

High School For
Law & Justice

2

North Forest
High School

3

How Different?

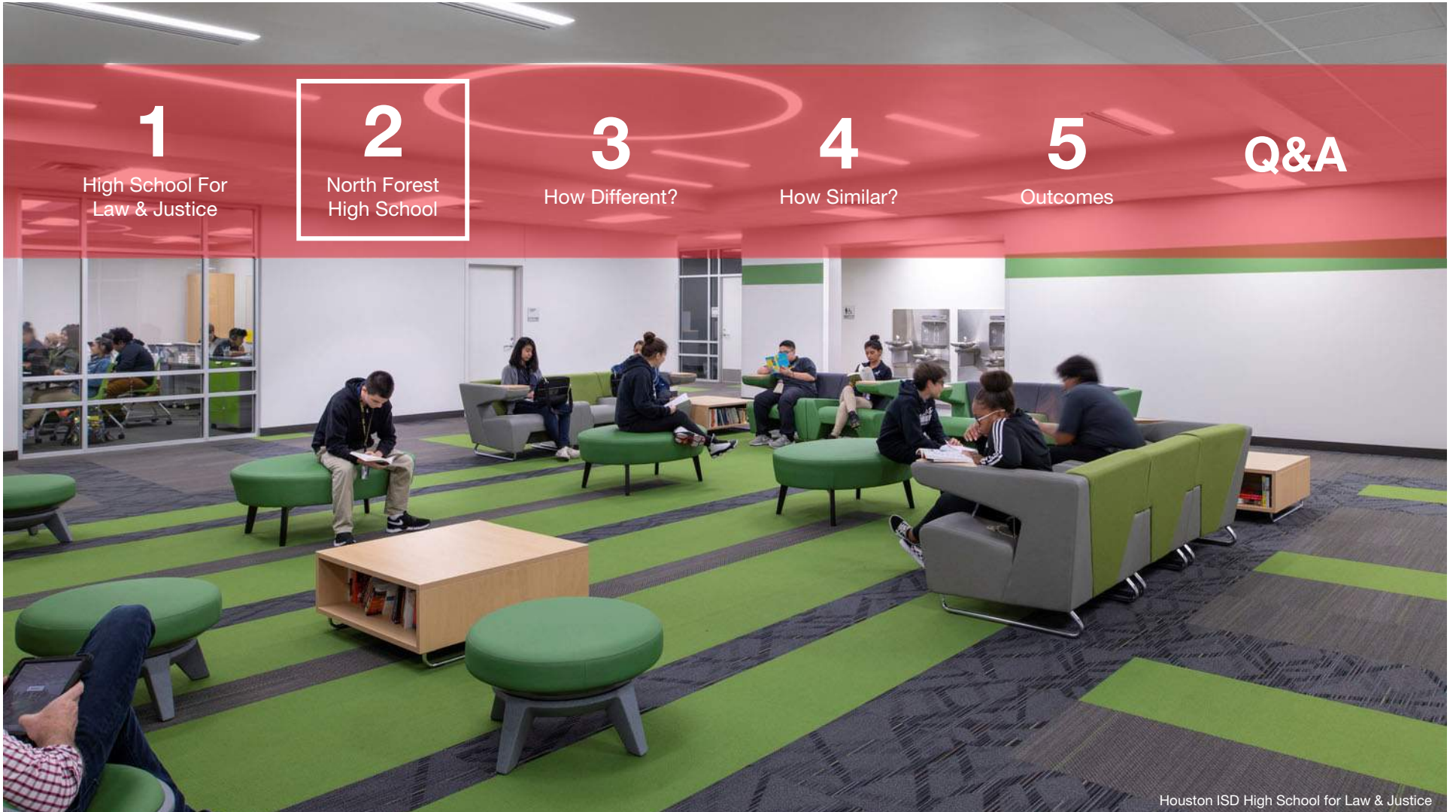
4

How Similar?

5

Outcomes

Q&A





North Forest High School

Context



PRESTRESSED
CONCRETE PLANT
PRIVATE LEAGUE SOCCER
FIELDS(4)



BUS STORAGE &
MAINTENANCE

NORTH FOREST HS
JONES-COWART STADIUM
(FOOTBALL FIELD & TRACK
TO REMAIN SHORT TERM)



PEDESTRIAN BRIDGE
EXISTING NORTH FOREST
SCHOOL BUILDINGS
TO BE DEMOLISHED
CENTERPOINT EASEMENT
RESIDENTIAL
NEIGHBORHOODS



NATURAL GAS
PIPELINE

North Forest High School

Context



North Forest High School

Context



North Forest High School

Context

owner project priorities

school should feel comfortable, not institutional



maintain a sense of being in the forest

Student Learning Centers need to be flexible enough to serve changing educational endorsements and programs of study



lines of sight and visibility are very important



safe and secure environment

work with the District's operational systems



provide 21st Century Learning Environments throughout the campus

North Forest High School

Context



North Forest High School

Design Strategies



North Forest High School

Context



North Forest High School

Design Strategies



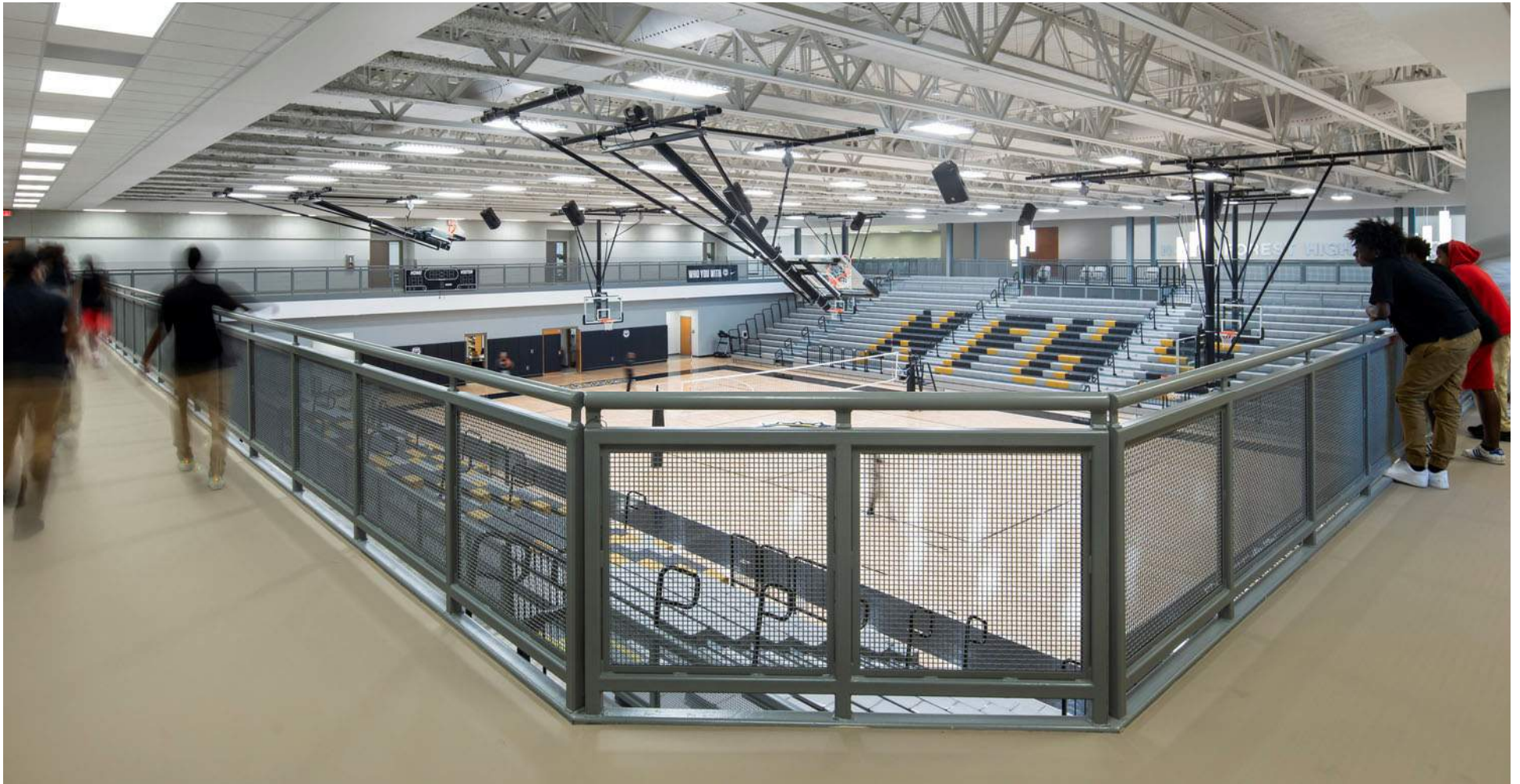
North Forest High School

Unique Features



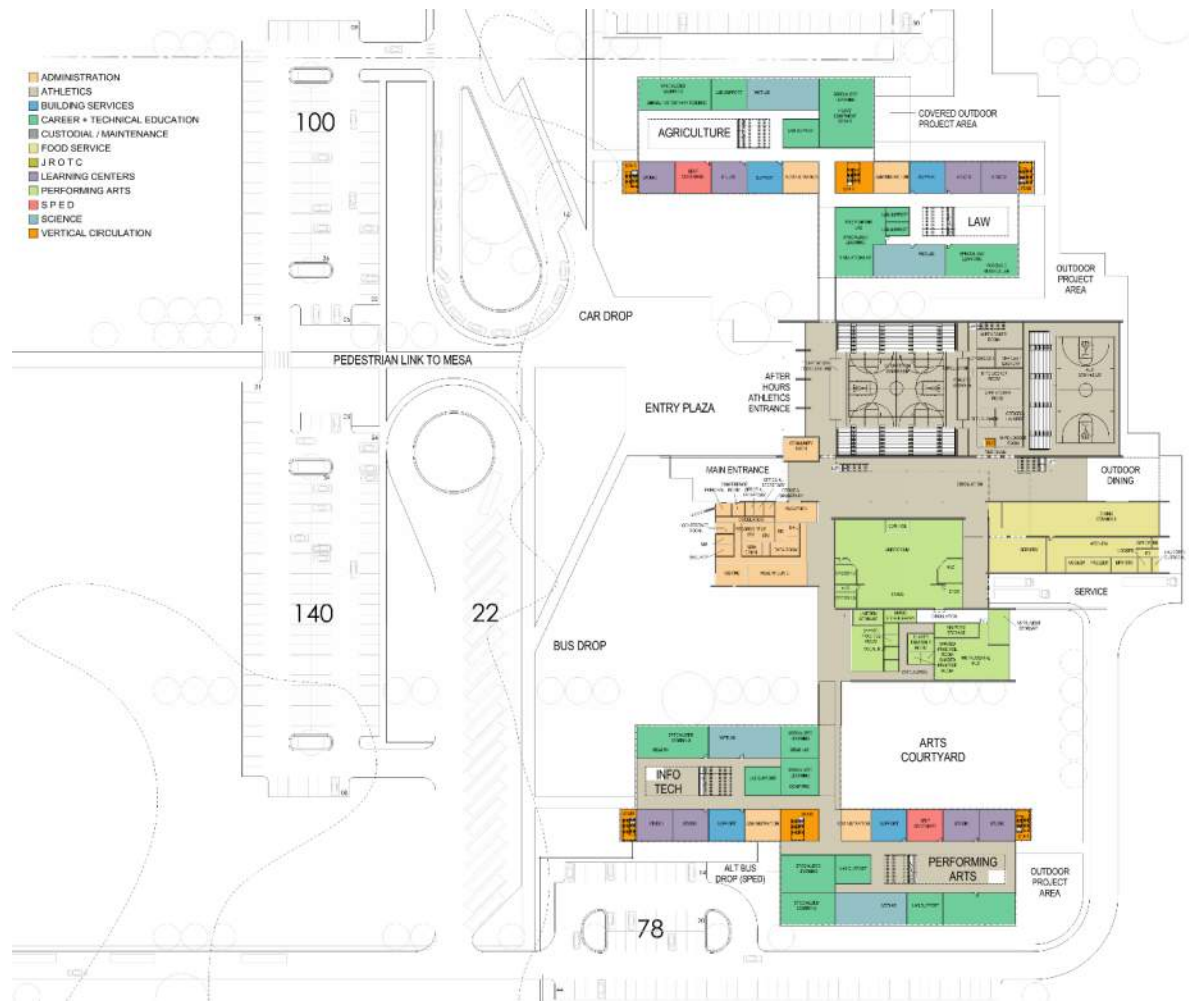
North Forest High School

Design Strategies



North Forest High School

Unique Features



North Forest High School

Design Strategies





North Forest High School

Unique Features



North Forest High School

Design Strategies



North Forest High School

Design Strategies

1

High School For
Law & Justice

2

North Forest
High School

3

How Different?

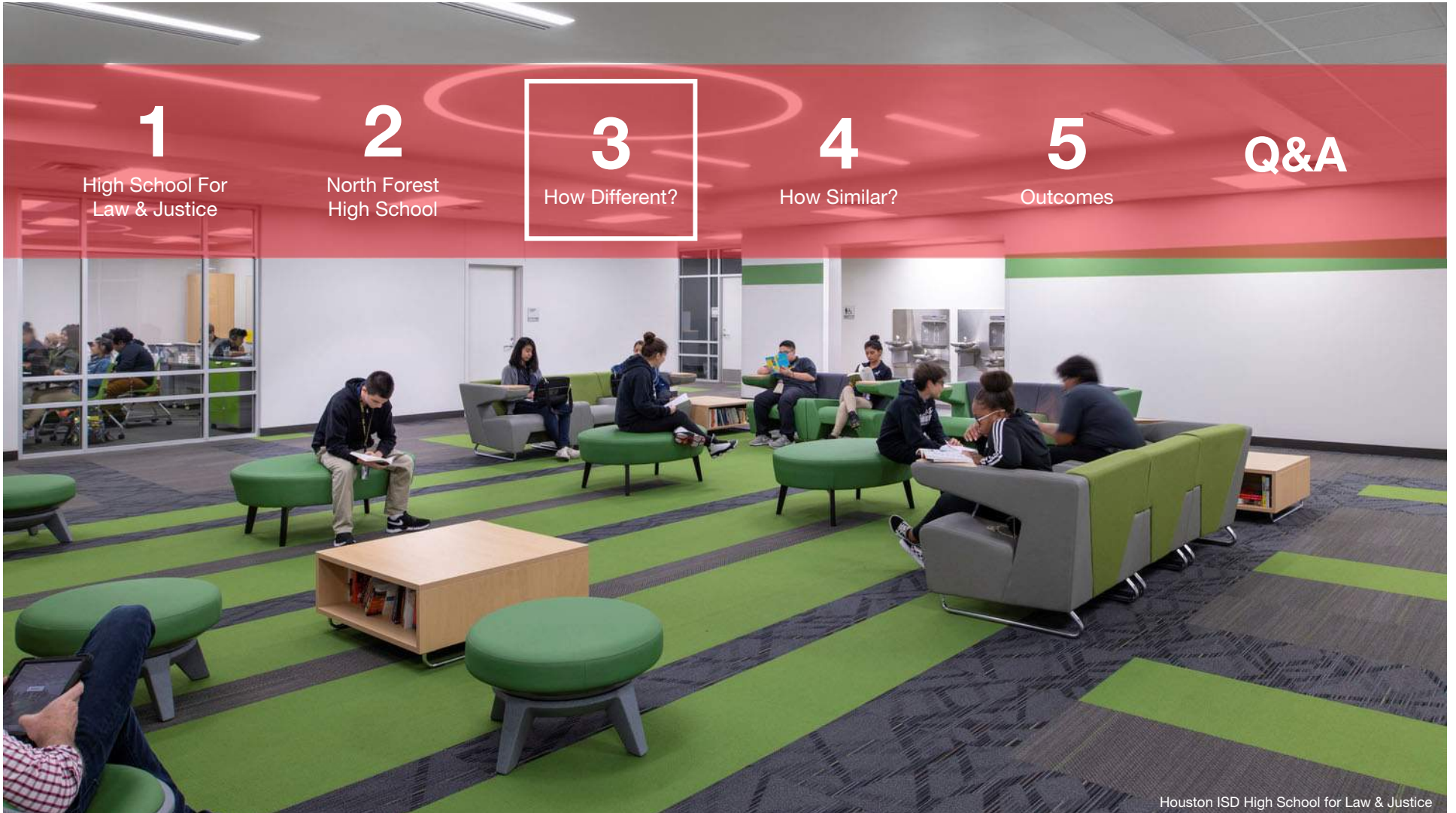
4

How Similar?

5

Outcomes

Q&A



Houston ISD High School for Law & Justice

Multiple pathways to success



**21st Century Learning
vs. Specialized
Programs**



**Suburban Greenfield
vs. Urban Brownfield**



**External Views vs.
Internal Focus**



**Celebration of
Specialized Programs**



Meaning of Color

How are these two high schools different?

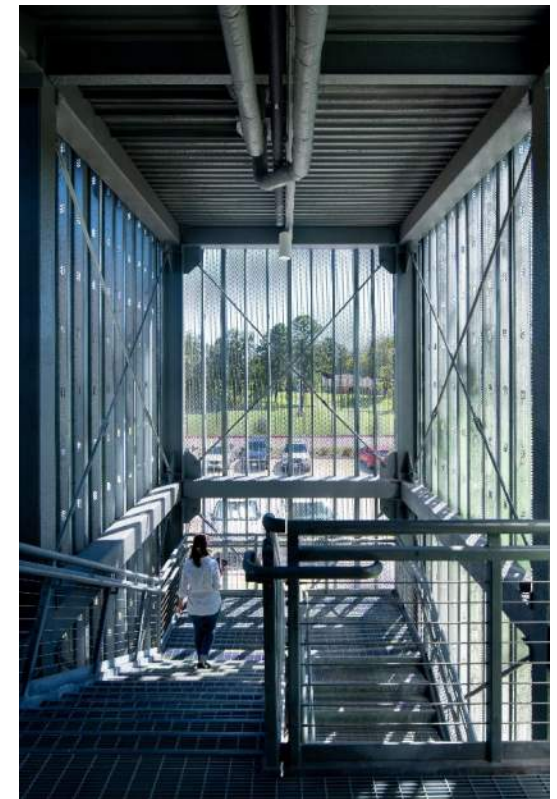
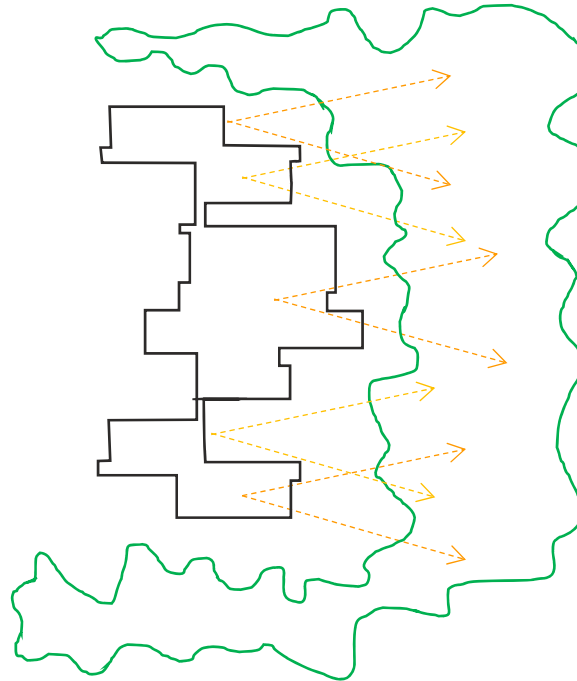
21st Century Learning vs. Specialized Programs



Suburban Greenfield vs. Urban Brownfield

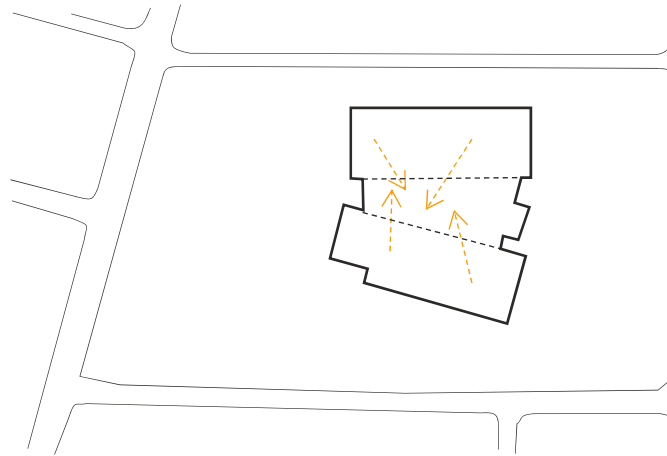


External/Natural Views vs. Internally focused

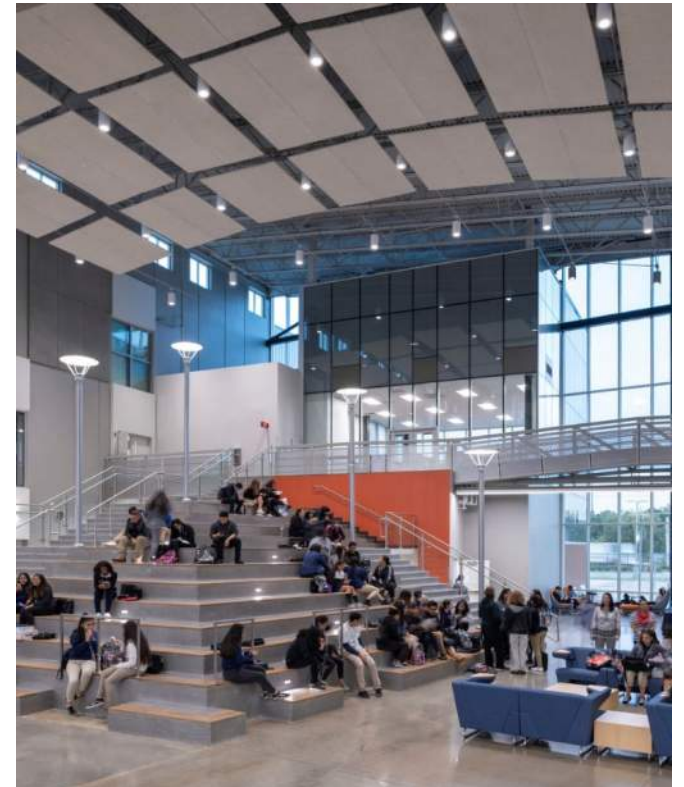


HIGH SCHOOL FOR LAW AND JUSTICE

External/Natural Views vs. Internally focused

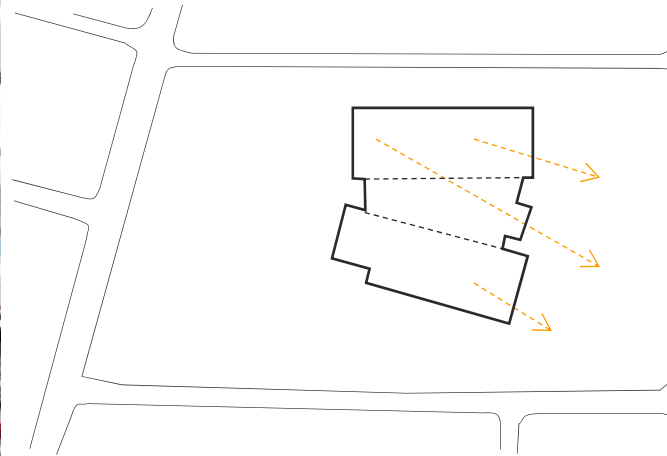


1st Floor

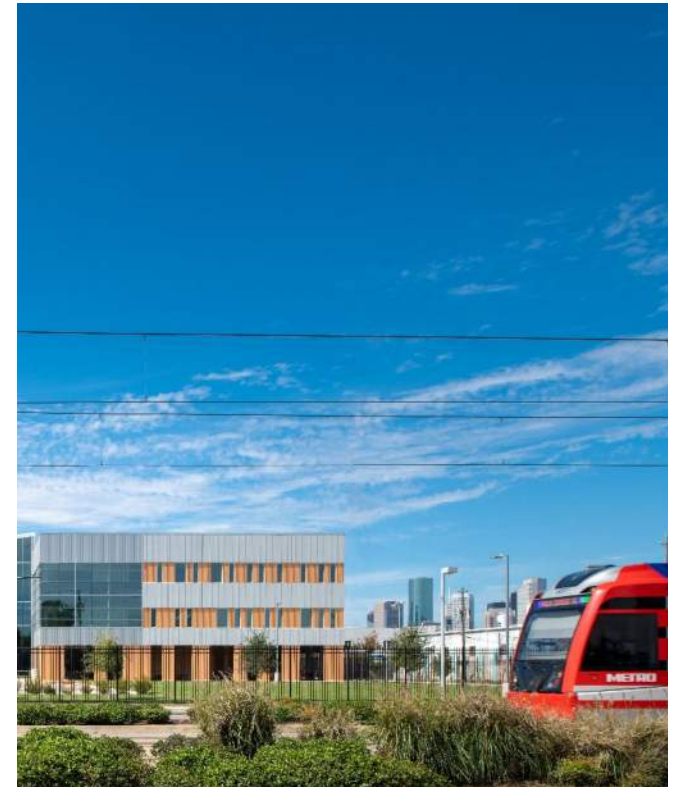


HIGH SCHOOL FOR LAW AND JUSTICE

External/Natural Views vs. Internally focused

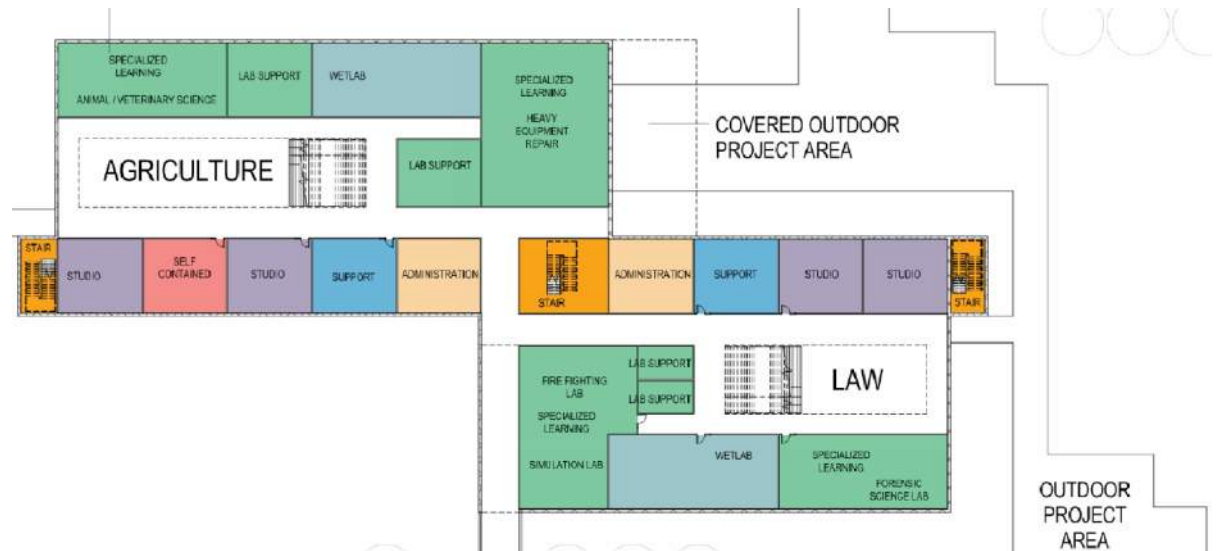
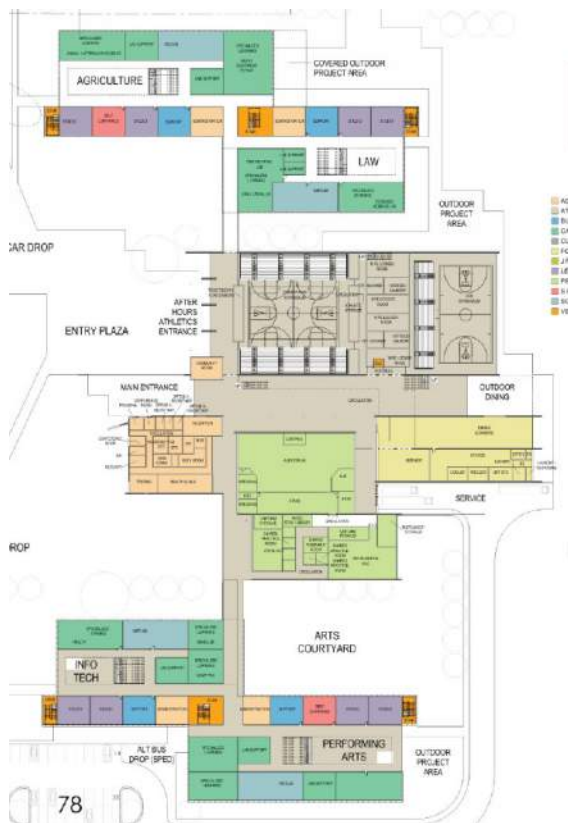


2nd Floor



NORTH FOREST HIGH SCHOOL

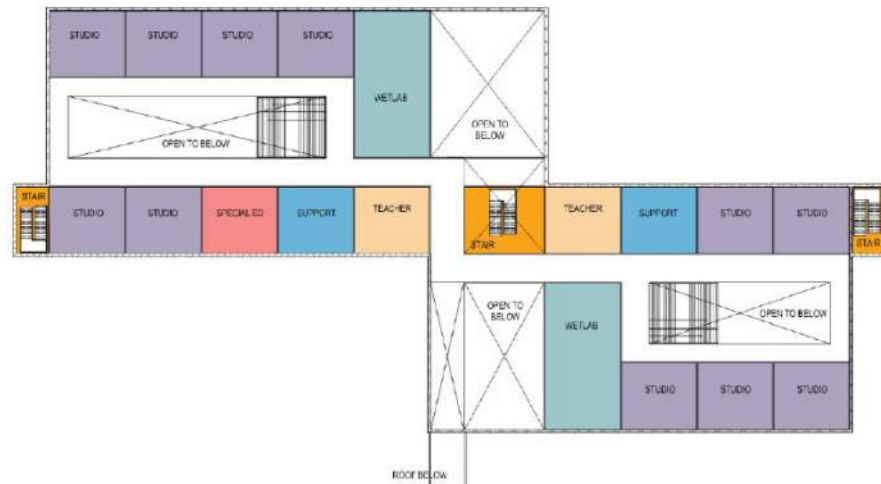
Celebration of Specialized Programs



First Floor

NORTH FOREST HIGH SCHOOL

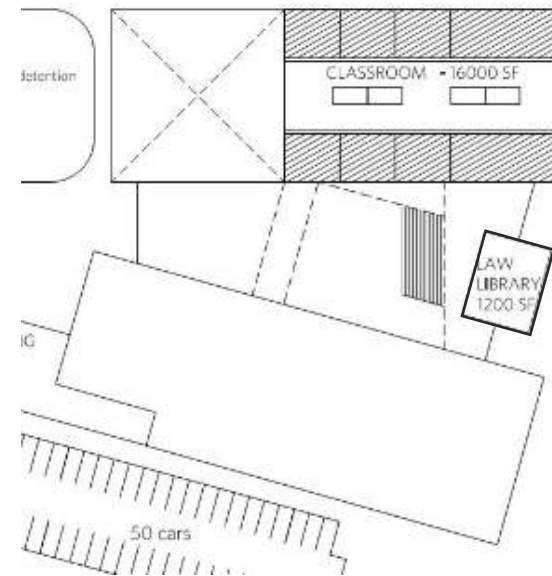
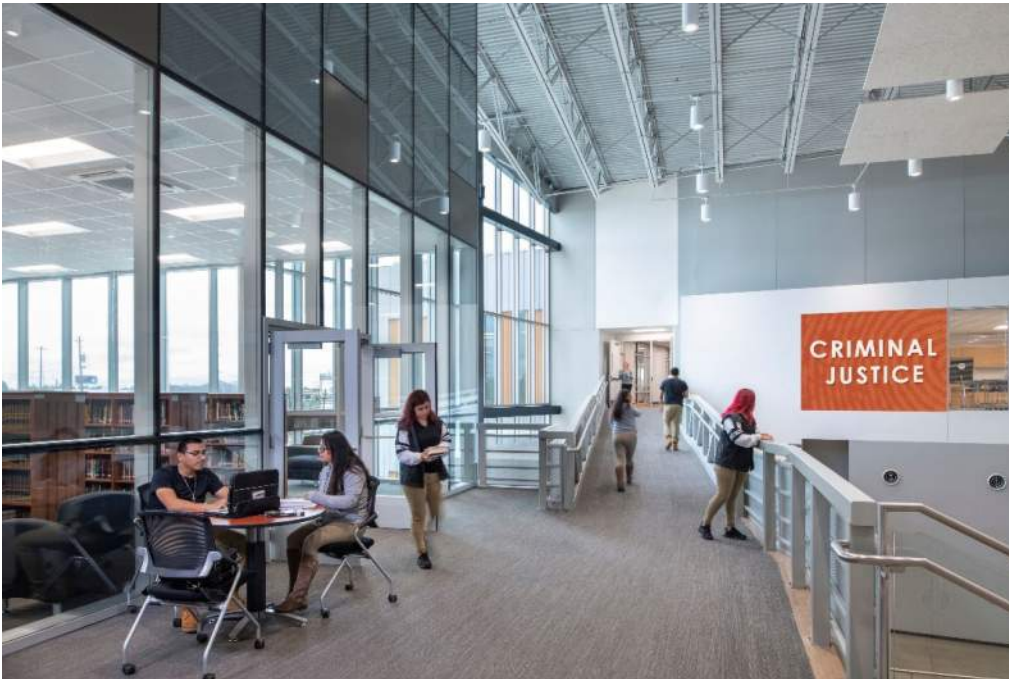
Celebration of Specialized Programs



Second Floor

HIGH SCHOOL FOR LAW AND JUSTICE

Celebration of Specialized Programs



NORTH FOREST HIGH SCHOOL

Meaning of Color



HIGH SCHOOL FOR LAW AND JUSTICE

Meaning of Color



1

High School For
Law & Justice

2

North Forest
High School

3

How Different?

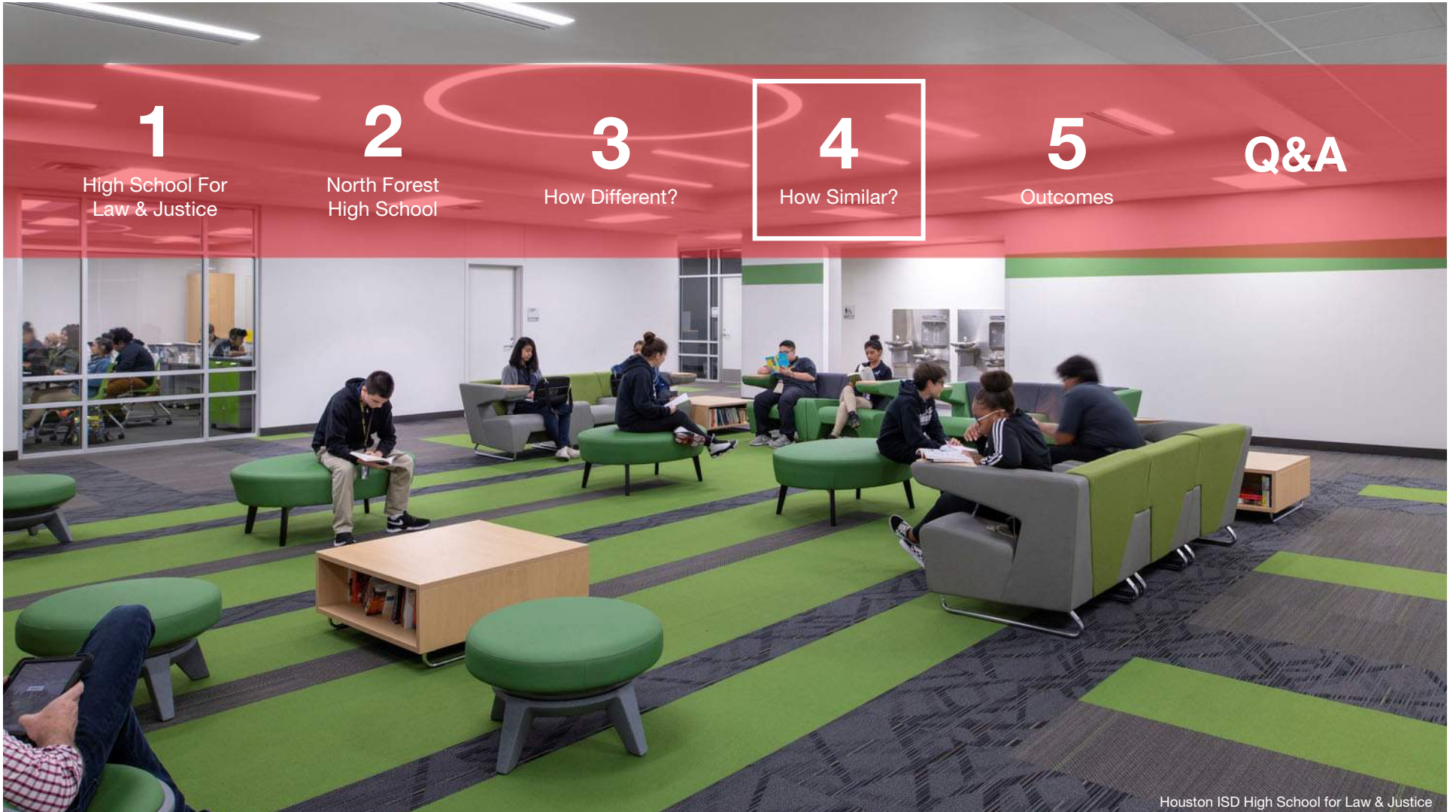
4

How Similar?

5

Outcomes

Q&A



Houston ISD High School for Law & Justice

Differences Become Similarities

A Different Beginning for Magnet Schools



Houston's First Magnet Program Started in 1971

- Begins with the HS for Performing and Visual Arts



Facilitate Desegregation in Public School Nationwide

- 86% Hispanic and African-American, 57% At-Risk



Promote Learning Opportunities/Academic Excellence

- Equitable Access for Houston ISD Students to Numerous Programs



Innovative Student-Focused Learning Models

- Many New Learning Modalities Started in Magnet/Alternative Settings

How are these two high schools similar?

Over 40 Houston ISD Magnet Programs:

Committed to Equity/Access to High Quality Education



College and Career Readiness



Fine Arts/Performing & Visual Arts



International Studies



International Baccalaureate



World Languages



Early College High School



Futures Academy



S.T.E.M. & S.T.E.A.M.



Single Gender College Preparatory



Vanguard

How are these two high schools similar?

Standards for Success in the 21st Century

Applying Lessons Learned from Magnet Programs



Collaborative/Large Learning Spaces



Transparency Throughout Learning Areas



Small Learning Communities/Neighborhoods

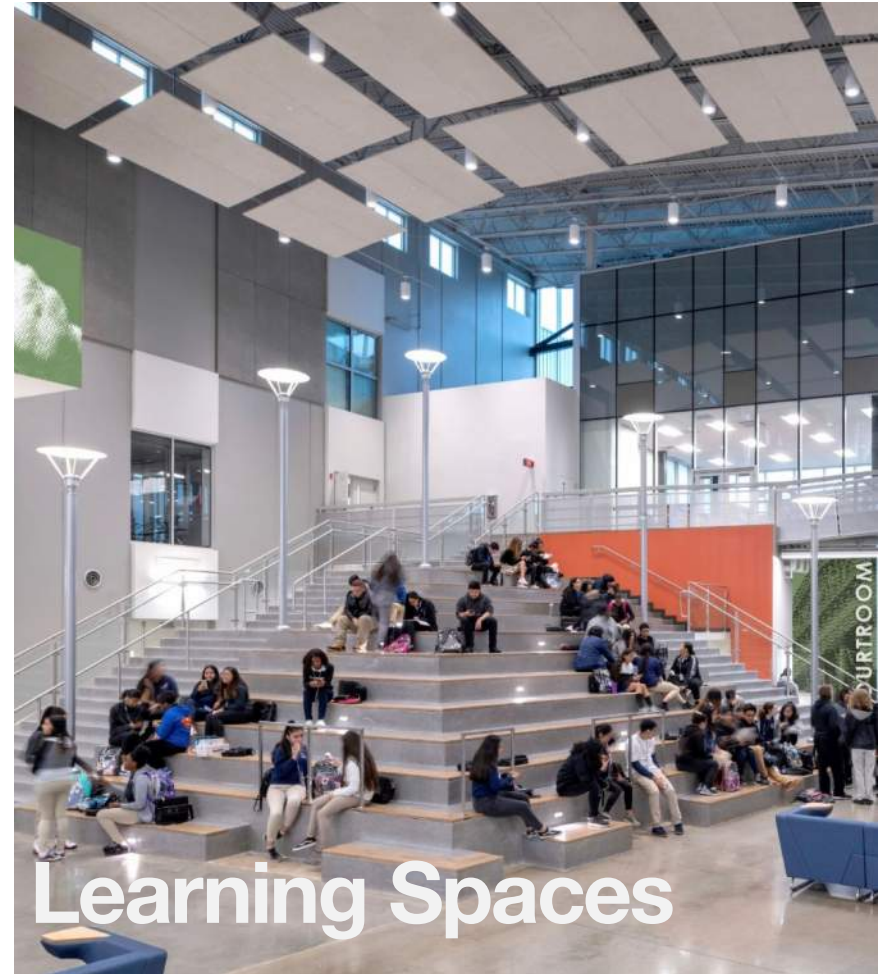


Flexible Multipurpose Spaces

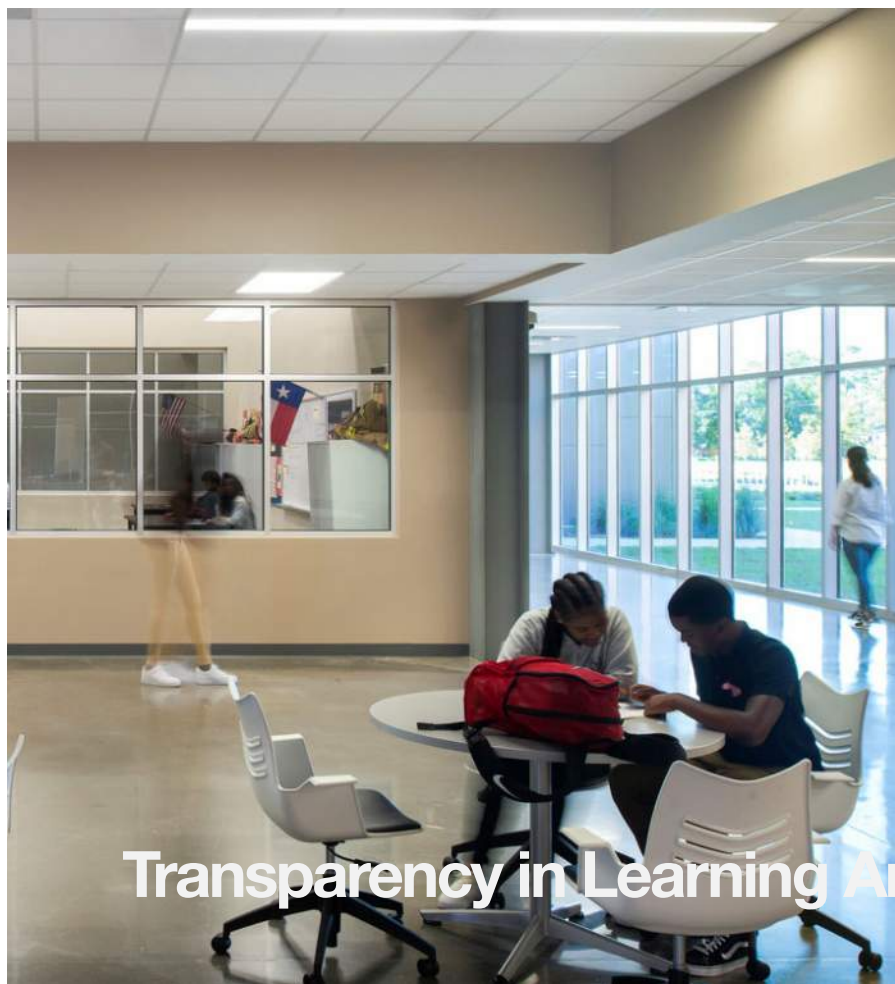
How are these two high schools similar?



North Forest High School



Context



Transparency in Learning Areas/Connection to Exterior

North Forest High School

Context

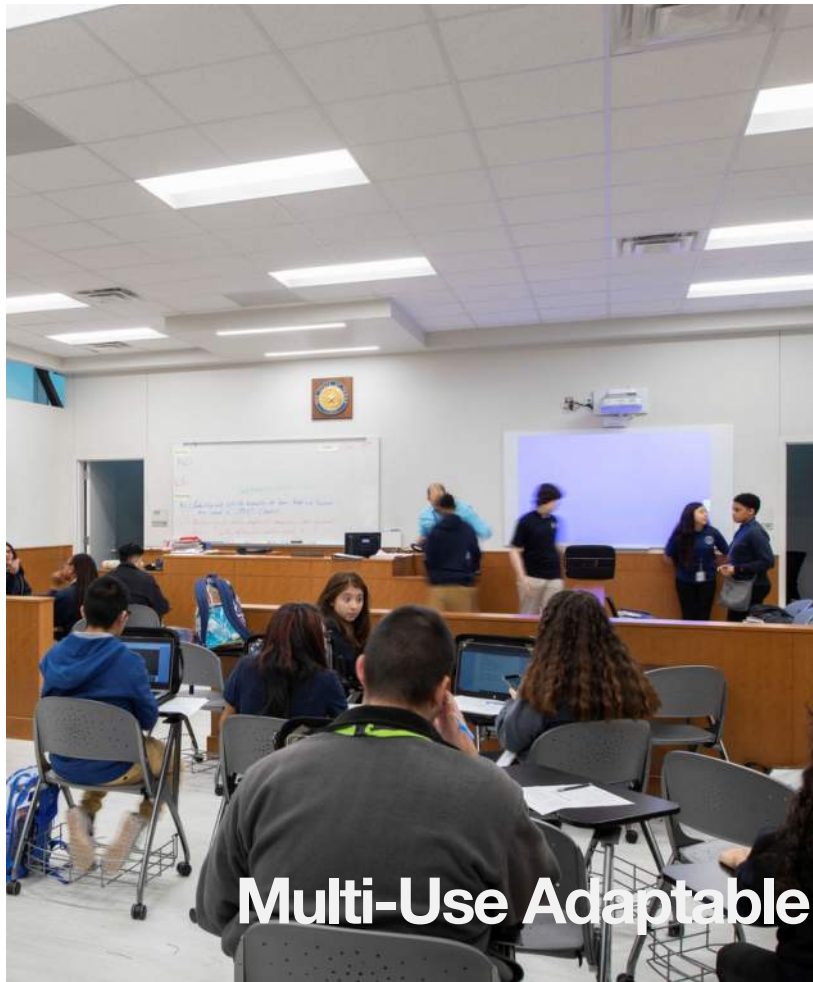


Small Learning Communities/Neighborhoods



Applying Shared Lessons Learned

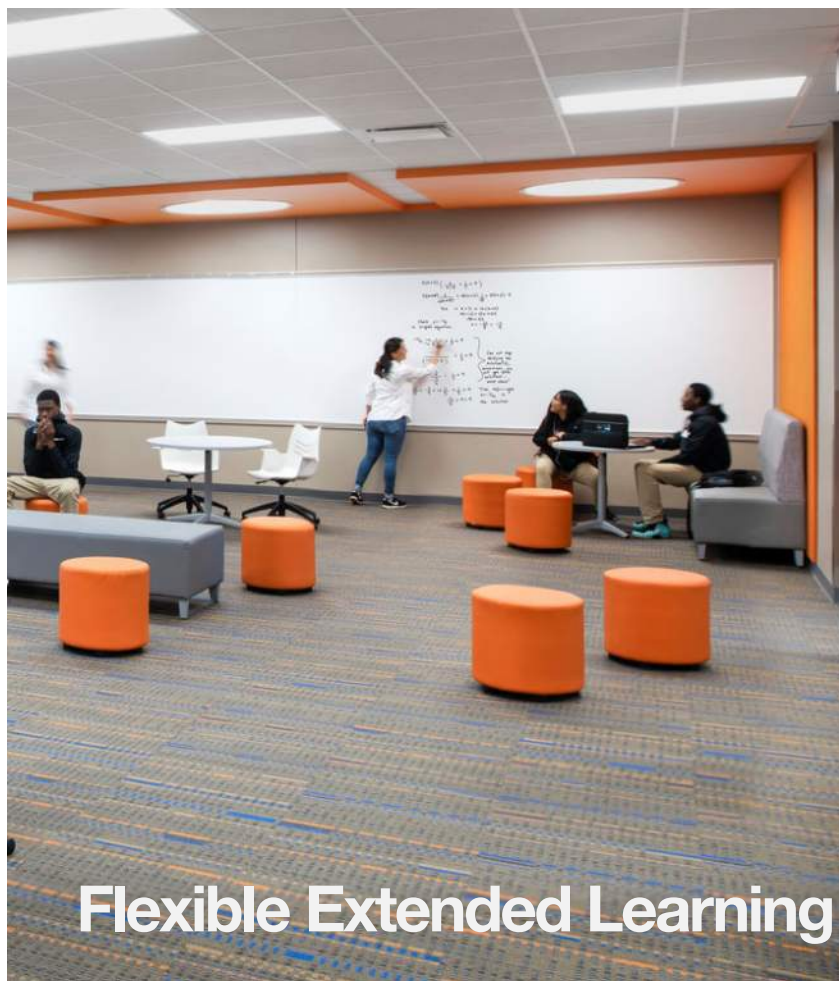
Context



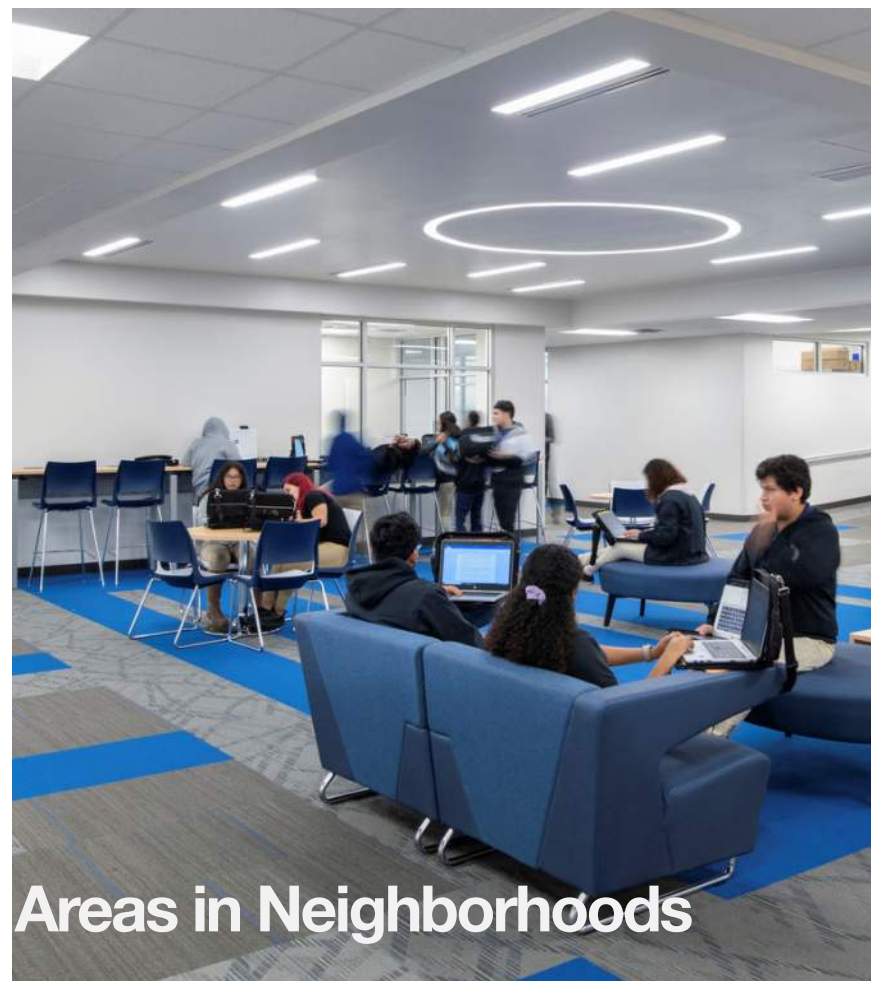
Multi-Use Adaptable Learning Areas

Applying Shared Lessons Learned

Context



Flexible Extended Learning



Areas in Neighborhoods

Applying Shared Lessons Learned

Context

1

High School For
Law & Justice

2

North Forest
High School

3

How Different?

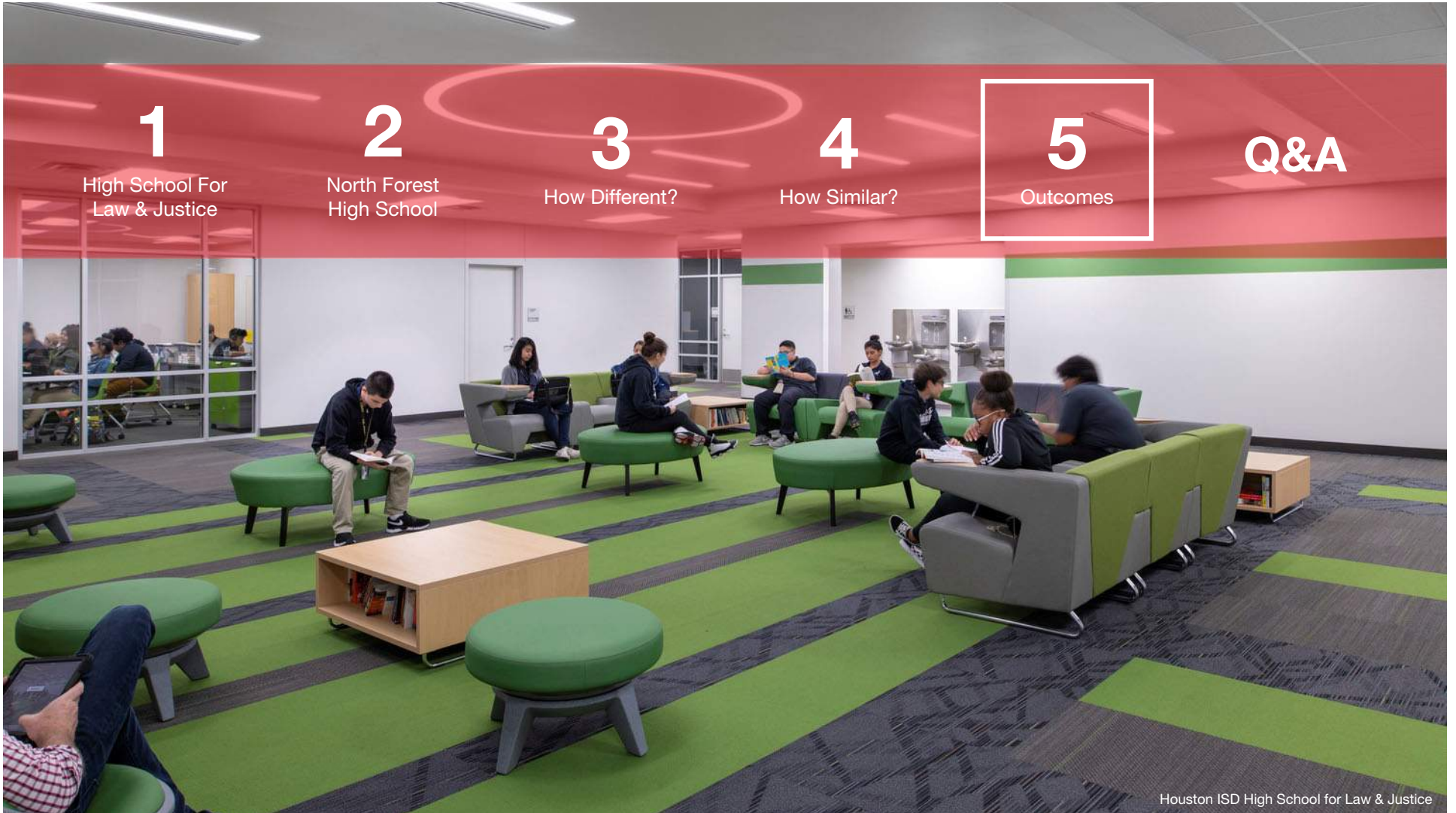
4

How Similar?

5

Outcomes

Q&A



School building design features have a measurable impact



Flexible, Well-Designed Facilities Attract Students

- 2018/2019 Student Enrollment Increased at HSLJ and North Forest HS

Decreasing Absenteeism Improves Student Learning

- Improved Indoor Air Quality Can Prevent 65% of Asthma Cases in Students
- Teacher Attendance Rate Increased to Over 96% in Monitored Group

What have been the outcomes so far?

School building design features have a measurable impact



What have been the outcomes so far?

Use of Daylighting Reduces Off-Task Behavior

- Disciplinary Actions Trending Downward in Monitored Group (includes North Forest HS)

Increased Daylighting and Innovative Design Fosters Higher Achievement

- Percentage of Monitored Students Reading At or Above Benchmark Increases 2% to 3%
- Universal Screener Performance Level Trending Up in Math Results for Group
- Previous Bond Schools Saw 4% to 5% Increases in Standardized Math and Reading Tests

Multiple Pathways Converged for Success

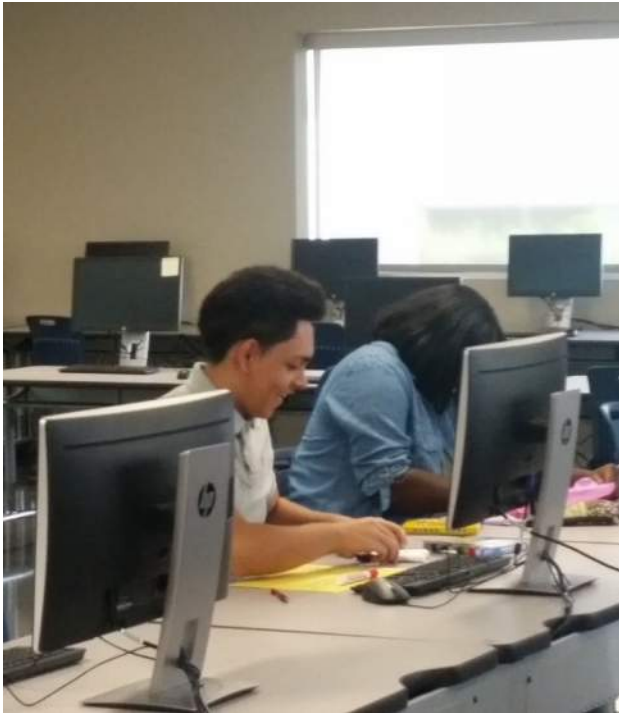


Implementation of Bold Information Technology Initiative

- Districtwide IT Infrastructure Upgrade
- Power Up One-to-One Laptop Program—Each High School Students Receives Laptop

What have been the outcomes so far?

Multiple Pathways Converged for Success



Implementation of Bold Information Technology Initiative

Professional Development of Teachers and Campus Leadership

- Training at Rice Univ., Univ. of Houston, and St. Thomas Univ.
- Student-Focused Curriculums
- Adoption and Development of Innovative Academic and Career and Technology Education Programs

What have been the outcomes so far?

Multiple Pathways Converged for Success



Implementation of Bold Information Technology Initiative

Professional Development of Teachers and Campus Leadership

Design of Innovative 21st Century Learning Environments

- Flexible, Student-Focused, Engaging Learning Spaces
- Sustainable Educational Environments
- Incorporation of Collaborative, 'Any Time Learning' Spaces Throughout

What have been the outcomes so far?

Operational Impacts



All Bond schools have similar MEP and furniture systems and now; enables more efficient training, maintenance, operations.

What have been the outcomes so far?

“It’s more like...a college place....I love it.”

North Forest High School student

“What I love the most are our classroom spaces with large windows, more open areas, and seating for children to collaborate and think in a nice environment.”

North Forest High School Principal



North Forest High School

Learning Today To Defend Tomorrow

The facility enables students to practice real-world techniques, including traffic control; handling domestic violence; court cases; crime scenes.



High School for Law & Justice



Authentic Learning

Light Rail

- Classes take the rail to the UH Law Library, to Texas Southern University, and the zoo.
- For the District, the rail costs 80 cents versus \$550 per student for bus transportation (from 14 buses at old campus to 8 buses now)



High School for Law & Justice

Authentic Learning



High School for Law & Justice



Classroom to Work

1

High School For
Law & Justice

2

North Forest
High School

3

How Different?

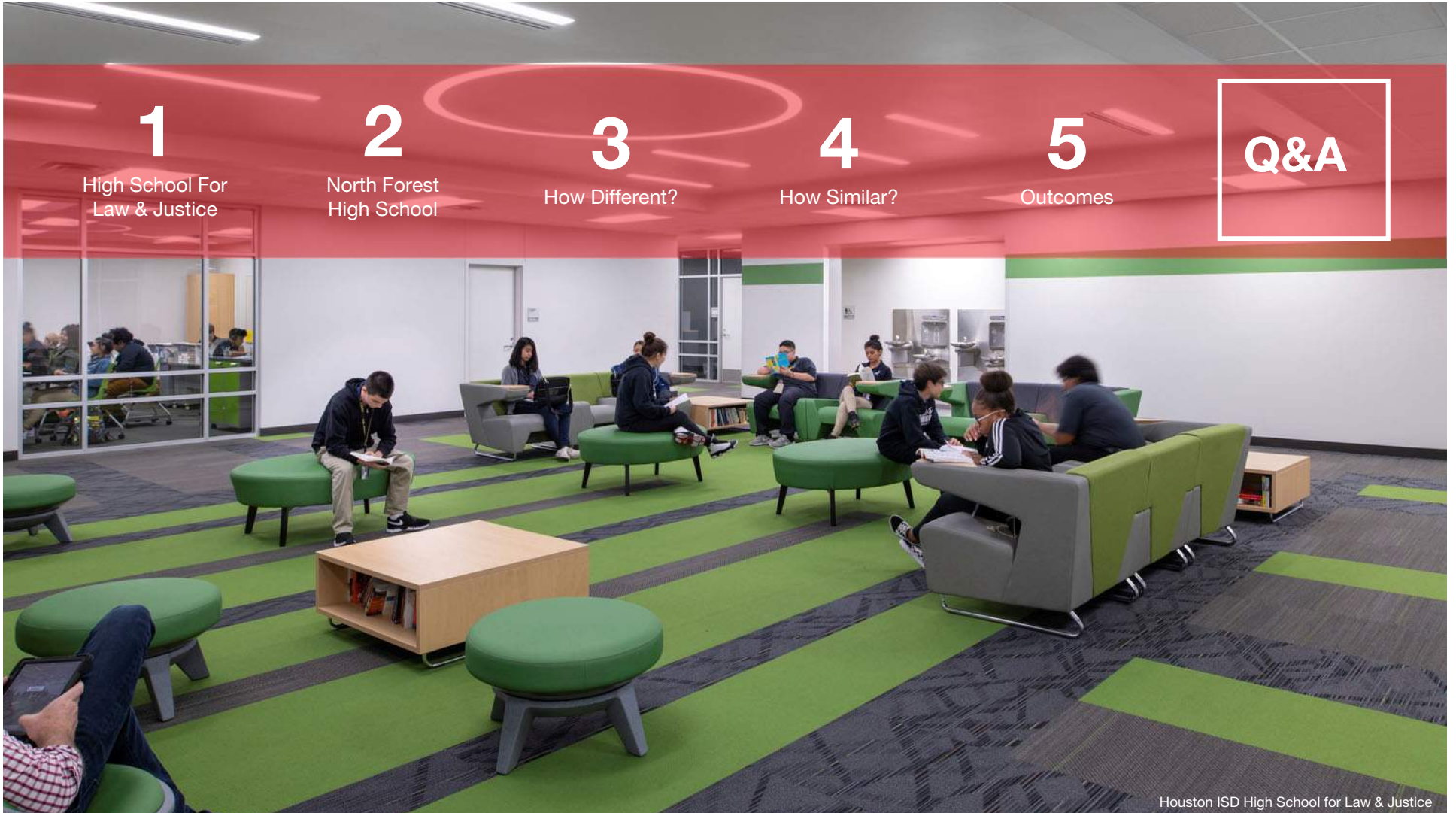
4

How Similar?

5

Outcomes

Q&A



Houston ISD High School for Law & Justice

For more information:

Wendy Heger *wheger@pagethink.com*

Taryn Kinney *tkinney@dlrgroup.com*