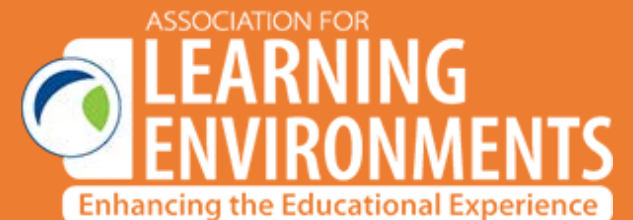


# Community Engagement for School Design:

## A Cautionary Tale

**Harrison Kornberg**  
ARCHITECTS



# Course Description

---

This program describes how an existing historical structure was analyzed for suitability as a new school. It also discusses community engagement strategies for soliciting important feedback from all constituencies. The program also demonstrates how new 21<sup>st</sup> century school designs can capitalize on tradition, and create important connections to a community's history.

# Learning Objectives

---

At the end of the this course, participants will be able to:

1. Solicit active engagement from the Community when planning a new school project.
2. Understand how to evaluate if a historic structure can or can not be adapted to a new use as a school.
3. Have strategies for incorporating historical components (elements of historical significance), into the design of a new, 21<sup>st</sup> Century School Design.
4. Have strategies for creating learning opportunities from historical context in a new school.





A photograph of a classroom with a teacher standing at the front, facing away from the camera, and several students sitting at their desks. The room has large windows on the right side, a whiteboard on the left, and a checkered floor. The image is semi-transparent, allowing the text to be overlaid.

**“Schools should be a point of unity, not division,  
between and among generations”**

*- Joe Perkins, past president of the AARP*




The background image shows a bright, modern school library. It features large windows on the left and back walls, providing a view of the outdoors. The interior is furnished with several wooden bookshelves filled with books, long study tables with blue chairs, and a circular area on the floor with a colorful geometric pattern. The ceiling has a complex, industrial-style structure with exposed beams and hanging lights.

**"Our school buildings and grounds and their impact on all of us are multi-dimensional and more important than most people realize."**

*- Dr. Linda Lemasters, Educational Facilities Clearinghouse*



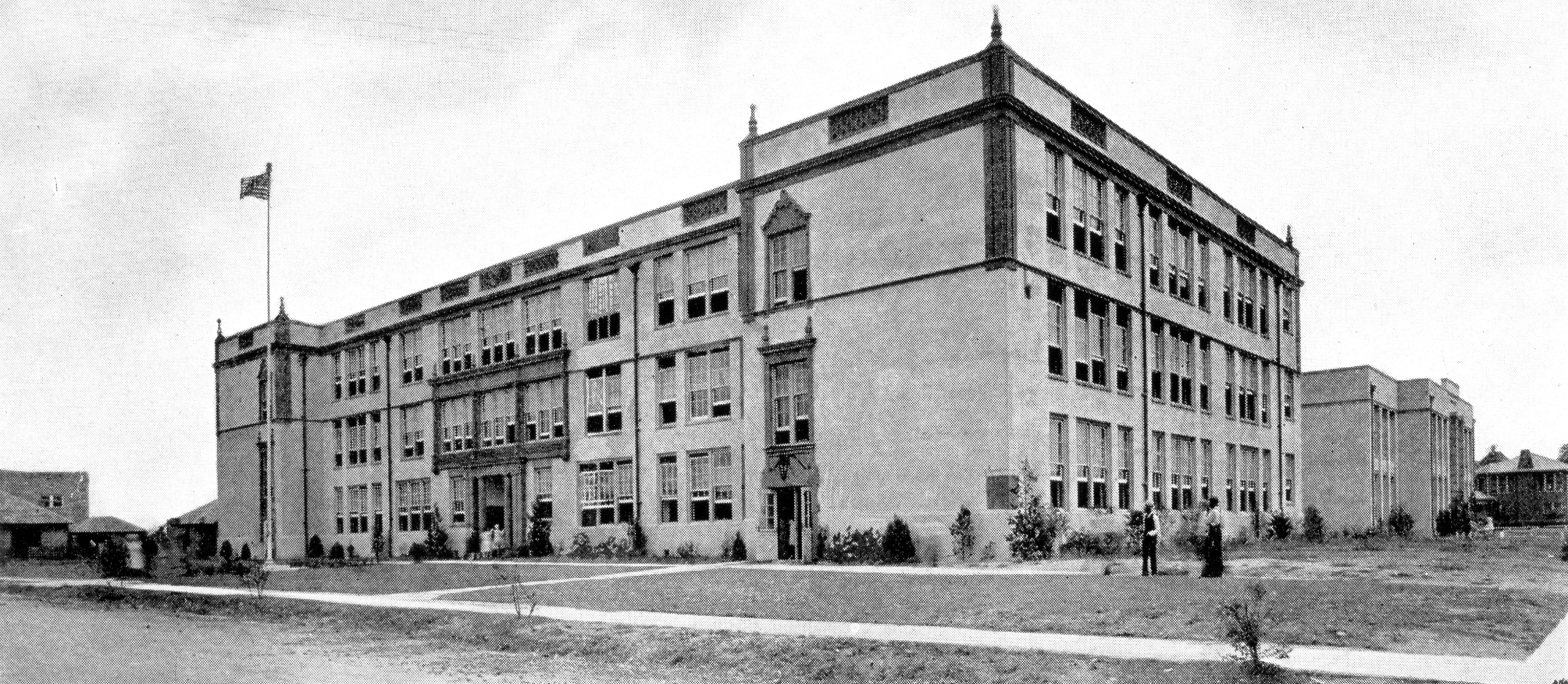


**“Symbolically, schools are seen by many as the last enduring public institutions in many communities.”**

*[https://www.michigan.gov/documents/The\\_Importance\\_of\\_School\\_and\\_Community\\_Collaboration\\_156613\\_7.pdf](https://www.michigan.gov/documents/The_Importance_of_School_and_Community_Collaboration_156613_7.pdf)*



# A Historic Icon





- Houston's historic Fifth Ward Neighborhood was settled by freed slaves after the Civil War. By 1925, over 40 African-American-owned businesses lined Lyons Avenue, the main thoroughfare.
- Phillis Wheatley High School was established in 1927 and educated generations of community residents. Wheatley High was one of the largest African-American high schools in the United States.
- "For many, **Fifth Ward is Wheatley High School**" and that African-Americans who grew up in the Fifth Ward "still cling closely to Wheatley" even after they had moved to other parts of the United States. – *Charles Herbert, Wheatley Principal 1979*



# Notable Alumni

Dr. Ruth Simmons



Mickey Leland



George Foreman



Barbara Jordan



Joe Sample

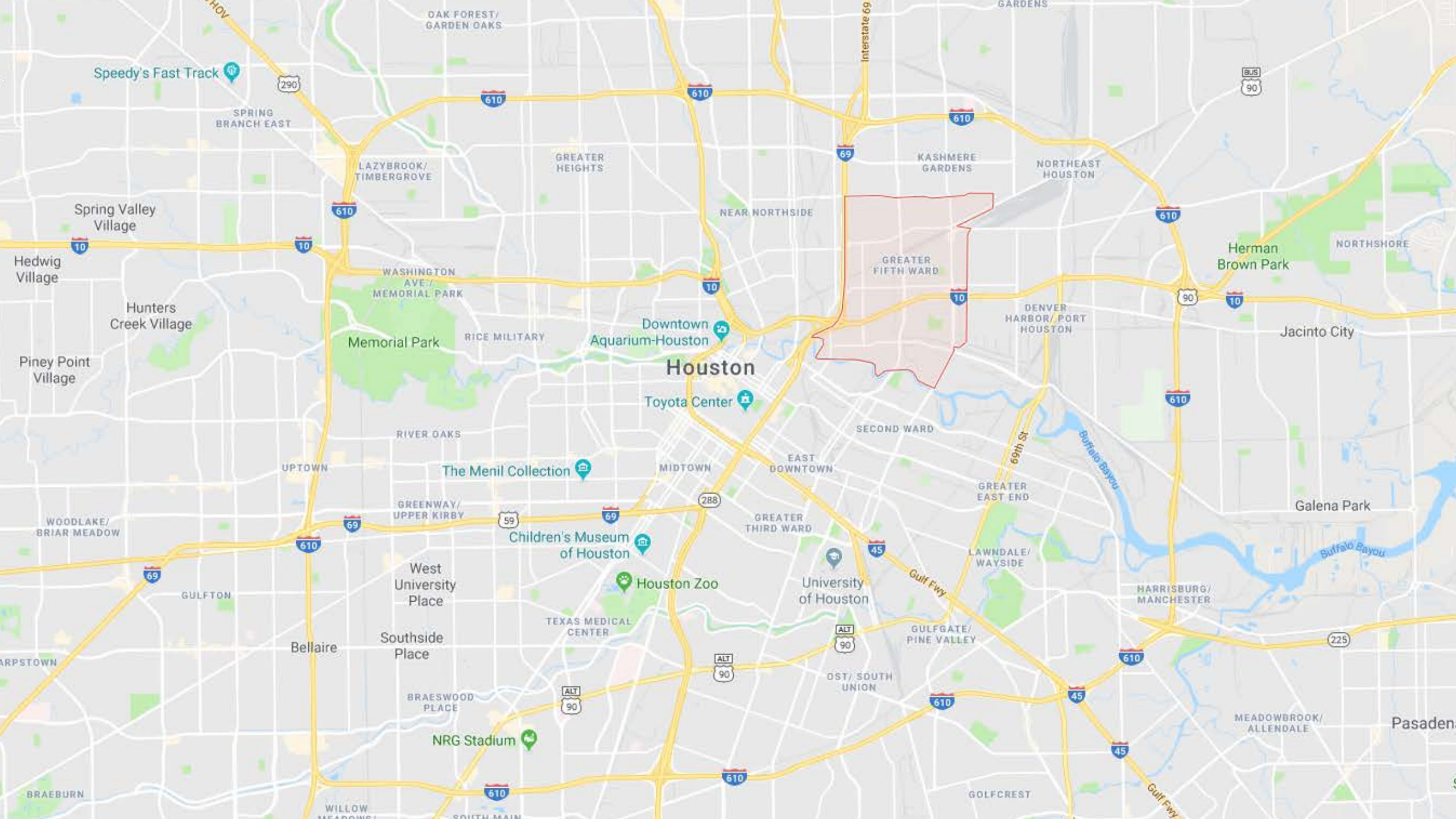




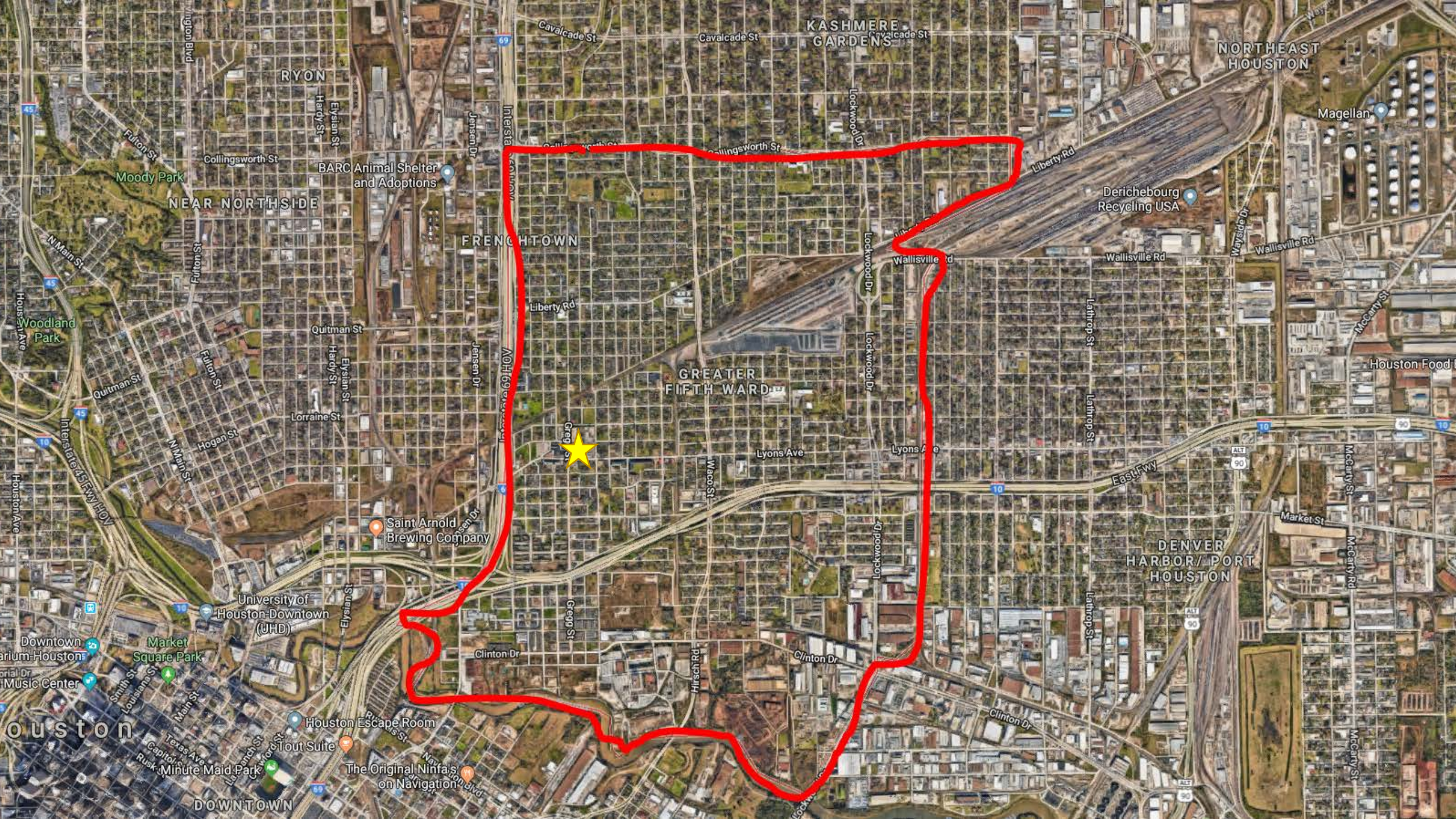


# The Community





















MT. VERNON  
UNITED METHODIST

SATAN HATES WHEN WE  
GIVE GOD PRAISE SO COME ON IN  
LET'S MAKE HIM REALLY MAD

1501





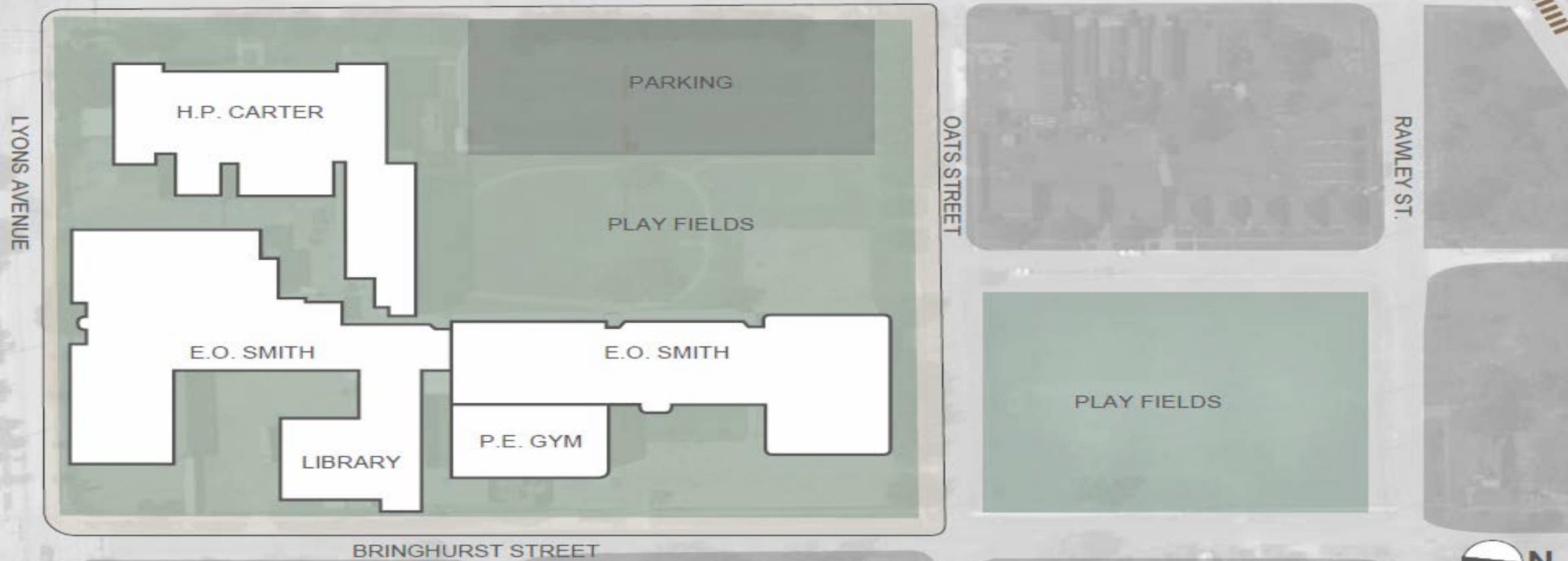








# Impetus for a New Building





# To Renovate or Construct New: Some Factors to Consider:

## ☐ Appropriateness for new use

- Size, geometry, number of floors

## ☐ Hazardous Materials

## ☐ Structural Soundness

- Foundations, frames / walls, floors and roof

## ☐ Construction systems and Floor-to-Floor heights

- Can new systems be inserted?
- Can the old building be made energy efficient?

## ☐ Status of MEP systems

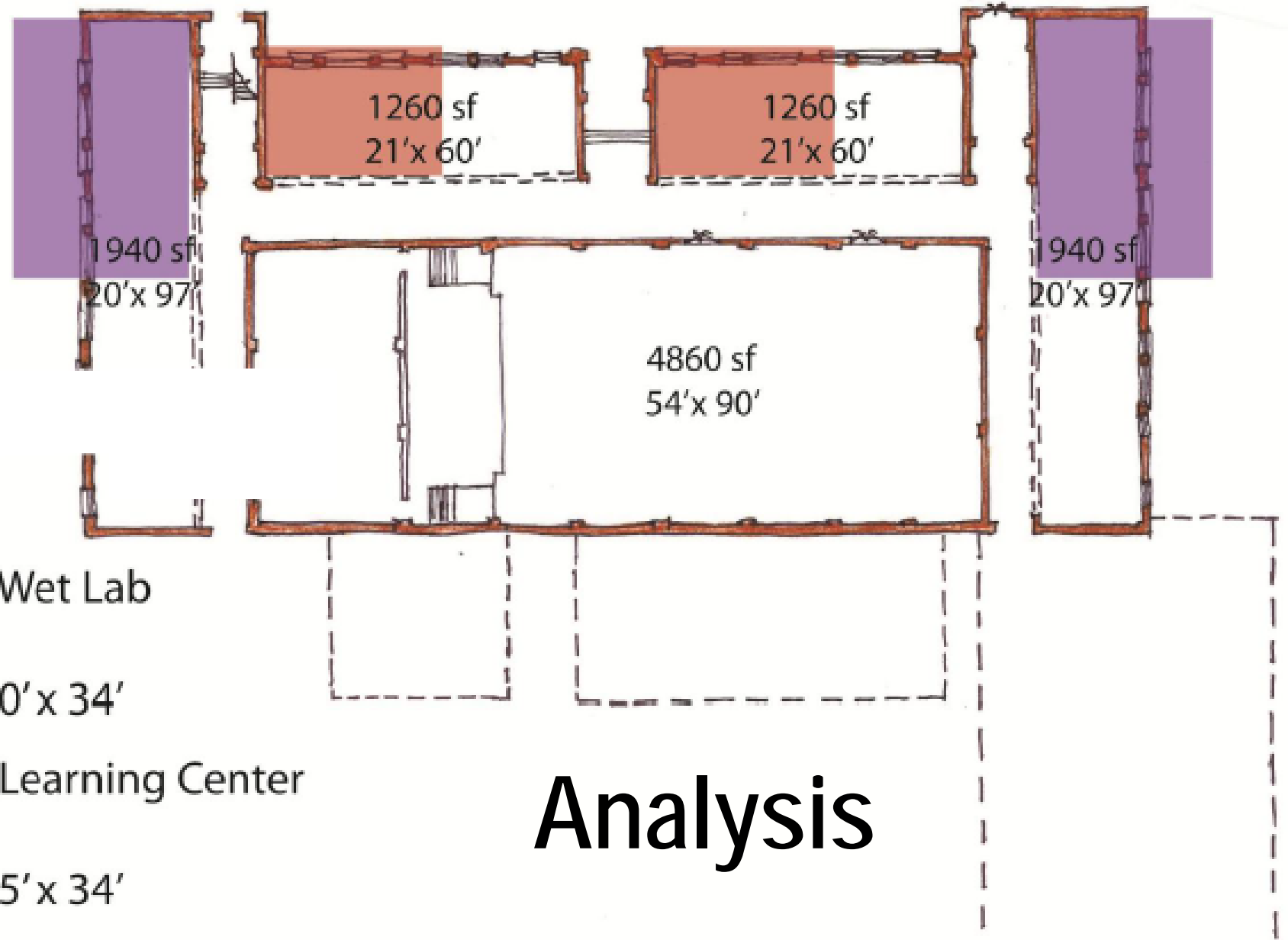
## ☐ Location on Site



- Is the site being used efficiently?



# EXISTING H.P. CARTER SPACE ANALYSIS VS. 21<sup>ST</sup> CENTURY LEARNING

Not 21st Century  
Long Narrow Classrooms  
Not Enough Classrooms  
No Open Work Spaces  
No Learning Commons

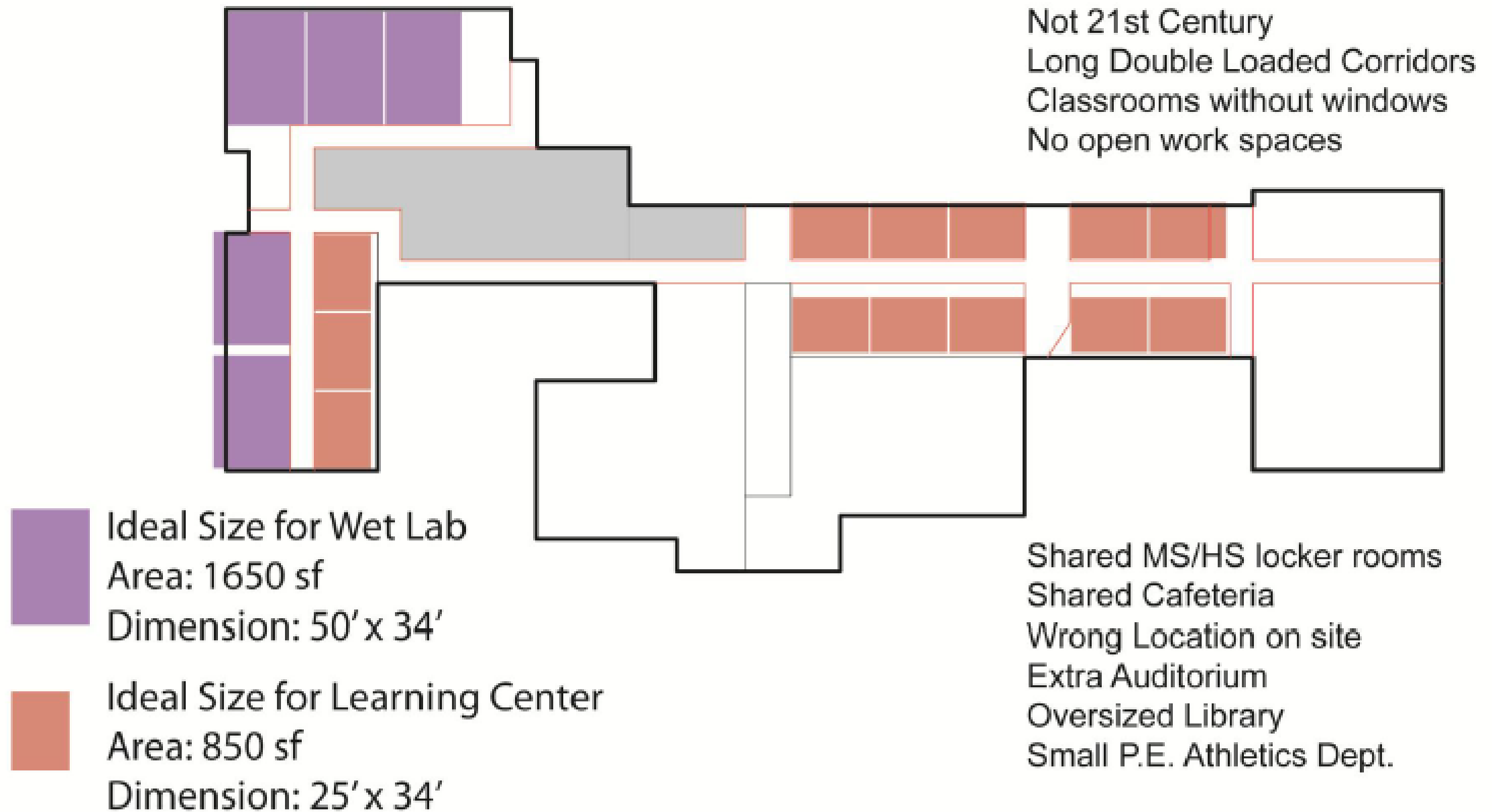


-  Ideal Size for Wet Lab  
Area: 1650 sf  
Dimension: 50' x 34'
-  Ideal Size for Learning Center  
Area: 850 sf  
Dimension: 25' x 34'

## Analysis



# EXISTING E.O. SMITH SPACE ANALYSIS VS. 21<sup>ST</sup> CENTURY LEARNING





# The "Charrette"



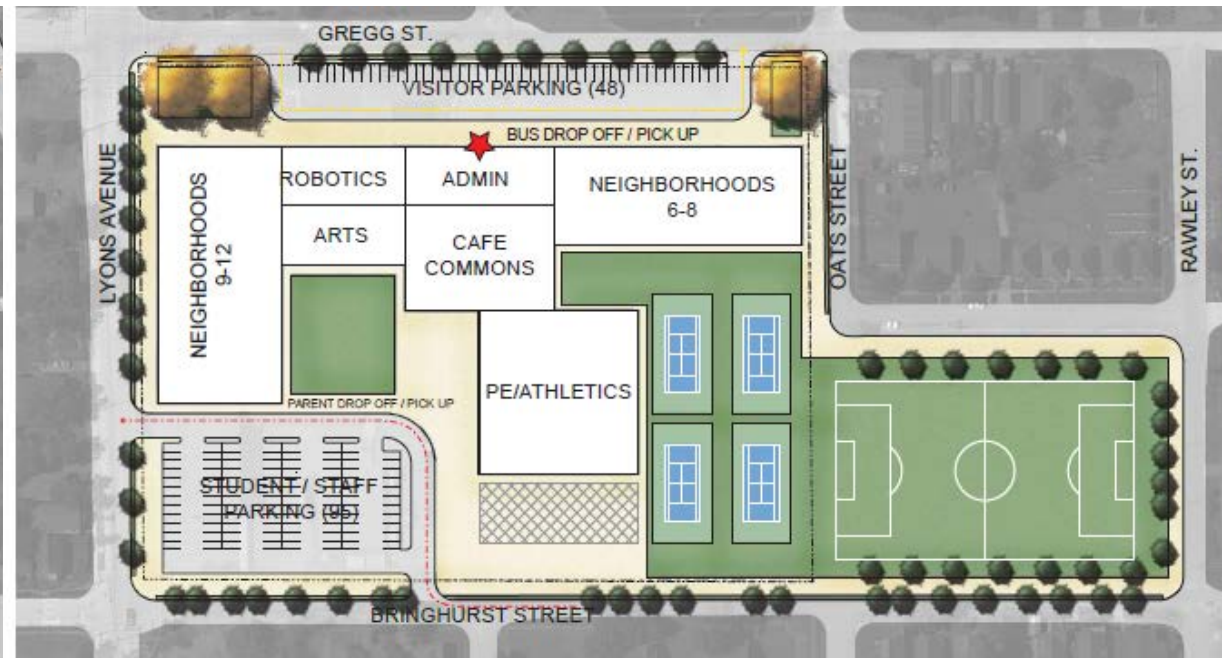




Option 1 – Demo Smith / Renovate & Add Onto Carter



Option 2 – Demo All / Build All New



Option 3 – Demo All / Build All New

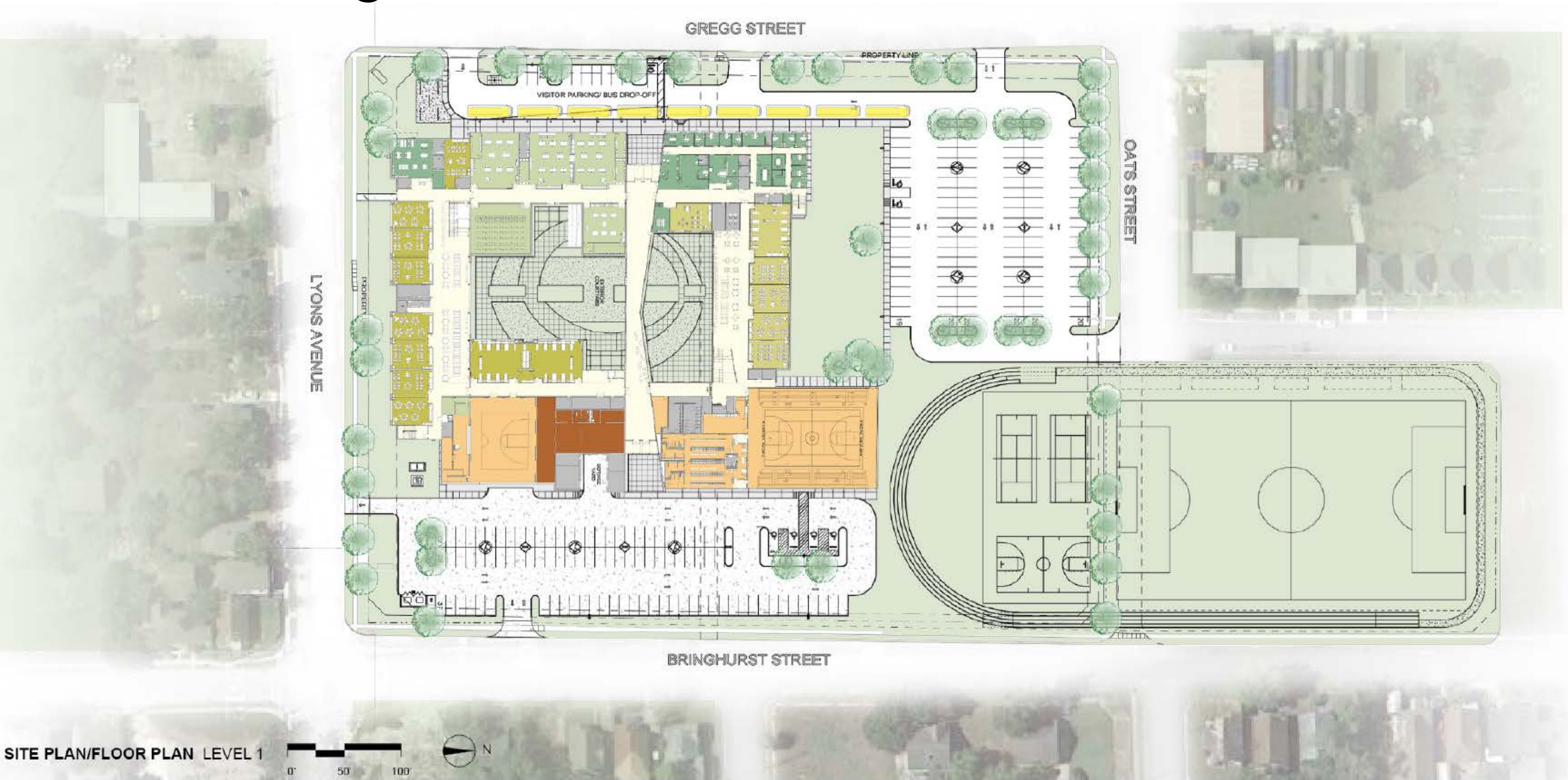


Option 4 – Preserve Carter Façade / Build All New

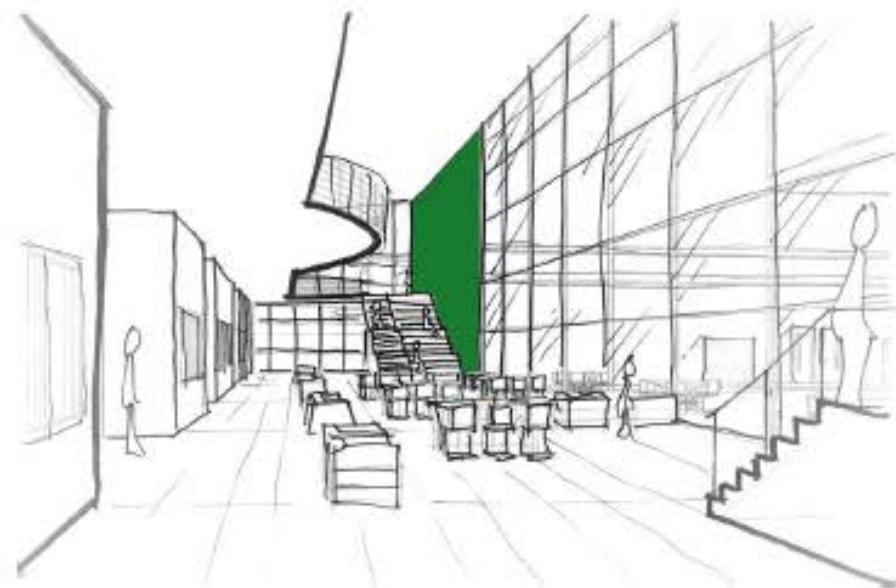




# The Design







INTERIOR PERSPECTIVE



EXTERIOR PERSPECTIVE ONE

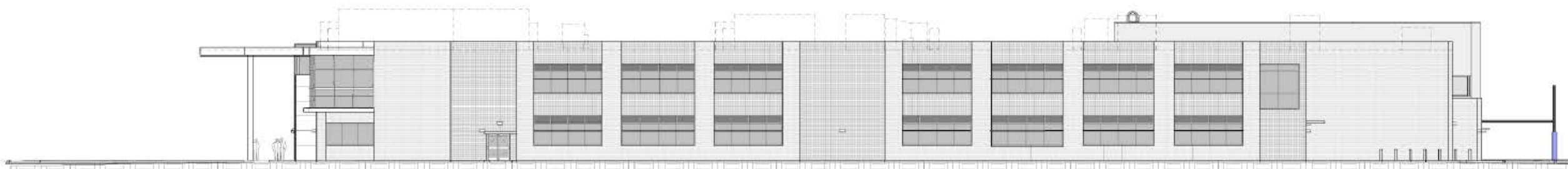


EXTERIOR PERSPECTIVE TWO





① West Elevation - Overall  
1/16" = 1'-0"



① South Elevation - Overall  
1/16" = 1'-0"

# Construction begins...





# You've Been Served!



CAUSE NO. 2014 49974

ARADINE L. BENNETT,  
Plaintiffs,

V.  
TERRY B. GRIER SUPERINTENDENT  
OF SCHOOLS FOR HOUSTON  
INDEPENDENT SCHOOL DISTRICT, AS  
GOVERNMENTAL UNIT  
Defendants.

§ IN THE DISTRICT OF  
§  
§ HARRIS COUNTY, TEXAS  
§  
§  
§  
§  
§ 165<sup>th</sup> JUDICIAL DISTRICT  
§

# The Injunction required:

- ☐ Construct the Gregg Street and Lyons Street Facades in a similar architectural style to the original HP Carter..., using as much of the original materials on the original facades as is practical...
- ☐ Construct an area... that honors the dignity, accomplishments and history of the school and students previously educated at the site.
- ☐ Construct a Grand Hallway befitting and honoring the dignity of the of the previous school... that incorporated materials showcasing the history of the prior schools...



# The Re-Design



Scheme 0



Scheme 1



Scheme 2a



Scheme 2b



Scheme 3

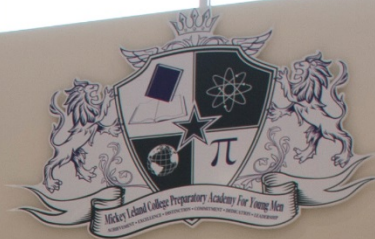






1929







# POLITICS AND COMMUNITY SERVICE



**Barbara Jordan**

Congressman  
(1936 – 1996)

Barbara Charline Jordan was a lawyer, educator, an American politician, and a leader of the Civil Rights Movement. A Democrat, she was the first African American elected to the Texas Senate after Reconstruction, the first Southern African-American woman elected to the United States House of Representatives. She was the first African-American woman to deliver a keynote address at a Democratic National Convention during the impeachment process against Richard Nixon. She received the Presidential Medal of Freedom, among numerous other honors.



**Mickey Leland**

Congressman  
(1944 – 1989)

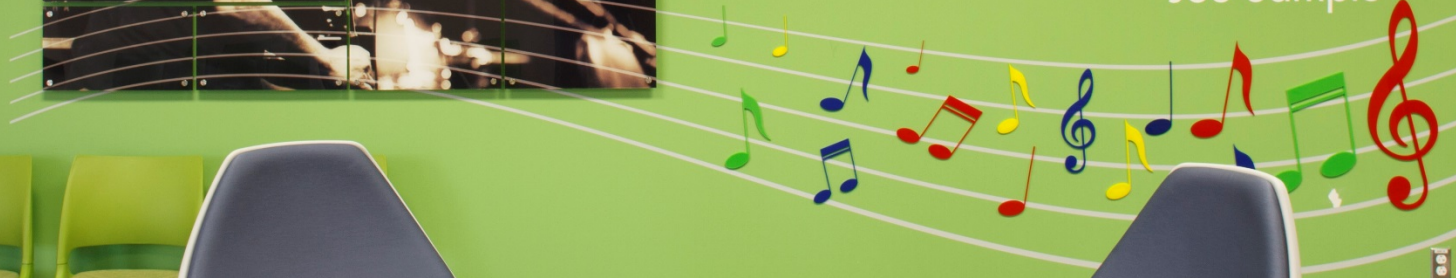
During six terms in the Congress, six years as a Texas state legislator and, Democratic National Committee official, George Thomas "Mickey" Leland focused much needed attention on issues of health and hunger and rallied support that resulted in both public and private action. Leland combined the skills of the charismatic leader with the power of a sophisticated behind-the-scenes congressman. He matured during his years in Congress into a brilliantly effective and influential advocate for food security and health care rights for every human being.



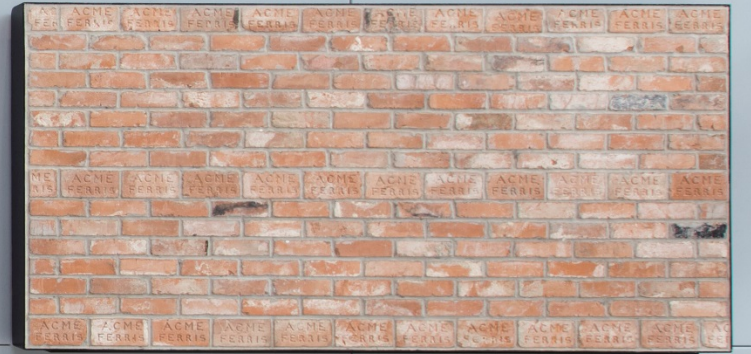
# JOE SAMPLE



"You must have fire in your spirit,  
you must have fire in your mind and  
you must have fire in your belly."  
Joe Sample













ERECTED  
A.D. 1929

*Harry Payne A.L.A.*  
*architect*

BACE CONSTRUCTION CO.  
GENERAL WORK

WALKER HTG. & PLBG. CO.  
PLUMBING WORK

GEO. H. GRAHAM CO.  
HEATING WORK

KIRK-SEMO ELECTRIC CO.  
ELECTRIC WORK

BOARD OF EDUCATION

R.H. FONVILLE - PRESIDENT

JUDGE K.C. BARKLEY - VICE PRES.

COL. W.B. BATES - SECRETARY

MRS. B.F. COOP - ASST. SECY.

DR. RAY K. DAILY

W. A. KIRKLAND

E.D. SHEPHERD

E. E. OBERHOLTZER - SUPERINTENDENT

H.L. MILLS - BUSINESS MANAGER









MEDIA CENTER

MICKEY LELAND

I am as much a citizen of this world as I am of this country. I grew up believing that we are supposed to help the least of our brothers.







# The Consequences

- Additional Cost \$1,000,000 +
- Schedule 7 months +
- Community Mistrust



# A Better Engagement

A large crowd of people is seated on a green lawn in front of a modern building with large glass windows. The building has a red brick upper section and a white lower section. The crowd is diverse in age and appearance, and many are looking towards the building. The sky is clear and blue. The text "A Better Engagement" is overlaid in white on the upper part of the image.



# Objective:

obtain reliable, thorough and actionable  
community input



# ● Community Outreach

- Civic club meetings
- Neighborhood religious centers
- Community parks/centers/libraries
- Block walk / Door to door
- Multimedia informational campaign





- Establish Trust

- Research the history of the neighborhood
- Be present
  - Get involved – go to meetings, attend events, PTO





- Right time, right place
  - Schedule meetings during non-working hours
    - Nights, weekends
  - Set meeting locations in the neighborhood
    - Easily accessible
    - Neutral territory





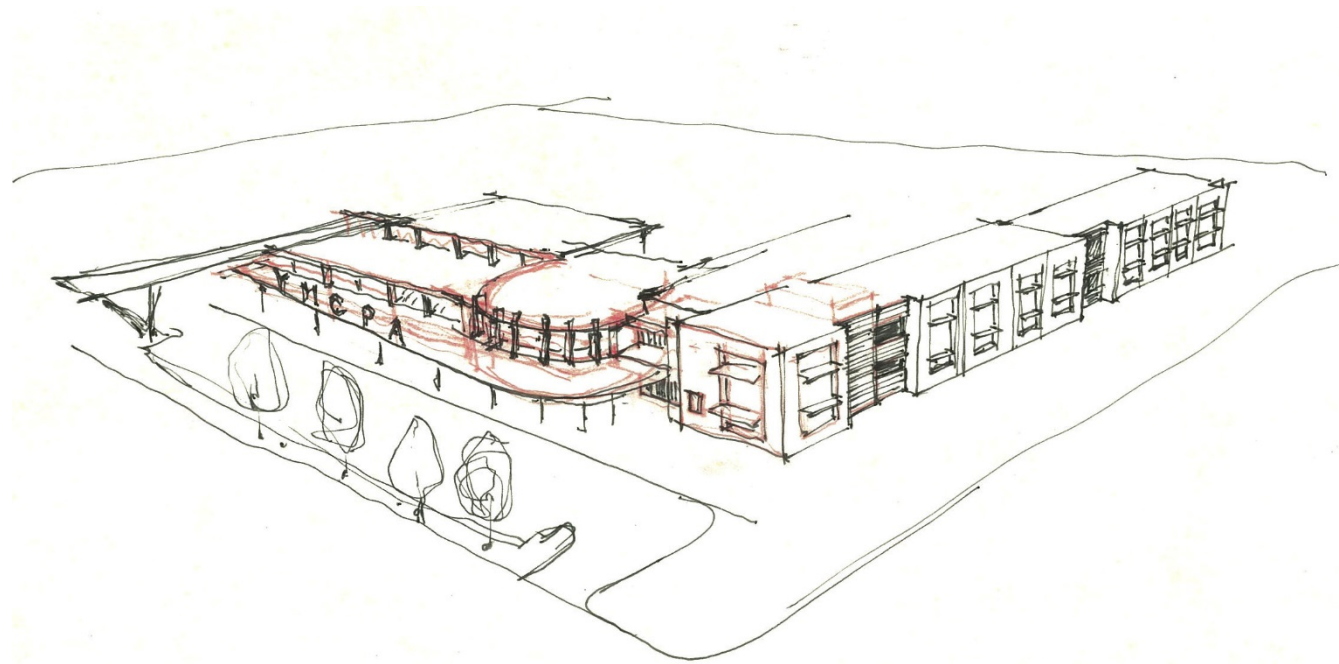
- Working with Owner to set boundaries

- What is on the table to discuss?

- ☐ Design

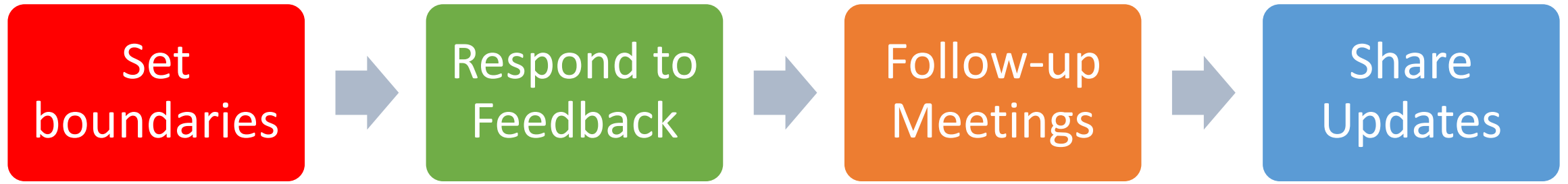
- ☐ Program

- ☐ Budget





# Communication is Key





Q & A

**Harrison Kornberg**  
ARCHITECTS

ASSOCIATION FOR  
**LEARNING  
ENVIRONMENTS**  
Enhancing the Educational Experience