

You Bought WHAT?

~ Evaluating a Potential Property for Potential Hazards ~



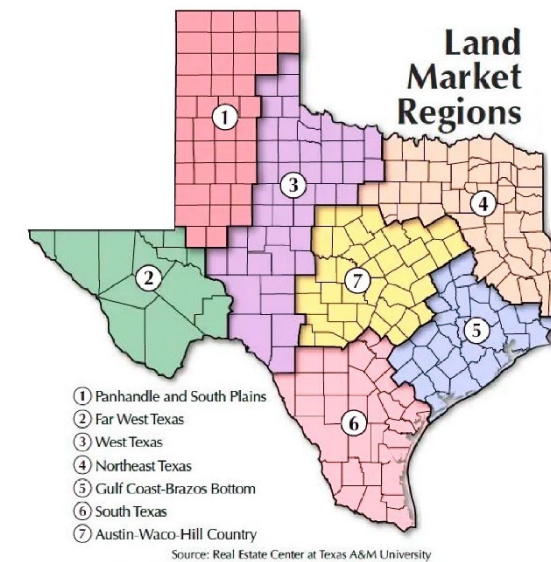


Course of Events

1. A Few Words About Today's Topic
2. Meet Our Panel
3. Eight Questions
4. Audience Asks Questions via QR Code
5. Thank you

Introduction

- **Topic Overview:** Discussing the impact of property purchases on education quality.
- **Importance:** Securing the right properties ensures safe, well-equipped environments for students.
- **Beyond Physical Space:** Property purchases are long-term investments in community and educational growth.
- **Benefits:** A well-chosen property supports thriving educational experiences, new teaching models, and community engagement.
- **Goal:** Make decisions that positively impact the educational experience for future generations.





Meet Our Panel



Gregory Louviere, AIA, NCIDQ
Design Manager, GPD Group





Bill Van Wagner

Director of Planning and Construction,
Alvin Independent School District





Dr. King Davis
Project Executive, GPD Group





Michael Golding, CFM, LEED GA
Manager of New Business
Development, PEA Group



Jim McSherry, AIA, LEED AP BD+C
Associate, GPD Group



Audience Questions

Here is the QR Code

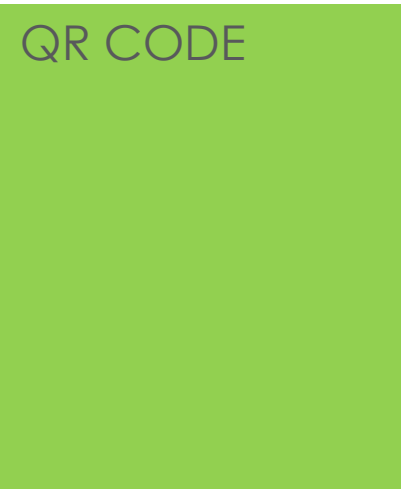
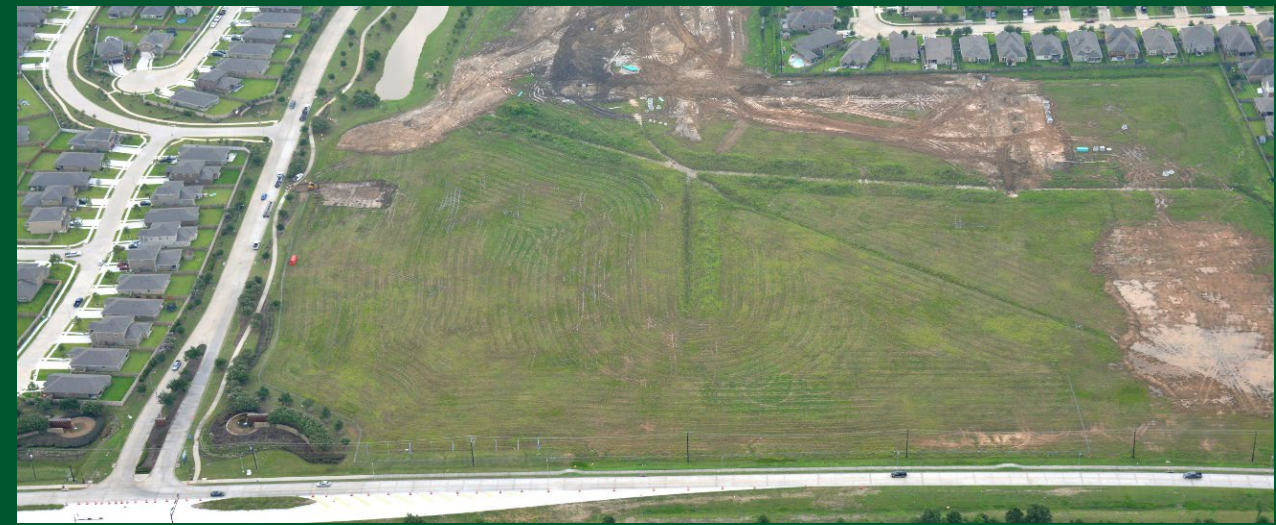
Here is how it works

QR CODE



Panel Question 1:

What are some of the major considerations a school district should consider when purchasing a greenfield property?



Panel Question 2:

In your time in the role of Superintendent of Sheldon ISD, your district underwent many significant changes, including the construction of a new high school, stadium, and an elementary school on a central site.

Can you discuss the challenges inherent in a land purchase that large and what creative solutions you applied to make the purchase a success?



QR CODE

Panel Question 3:

What civil engineering considerations should school districts look for when dealing with Flood Zones, Storm Water Detention, Authorities Having Jurisdiction, Municipal Utility Districts, Etc.?

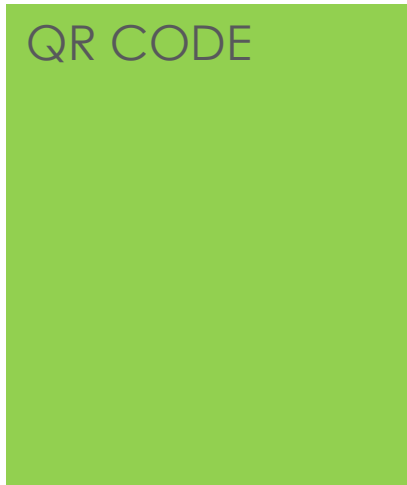
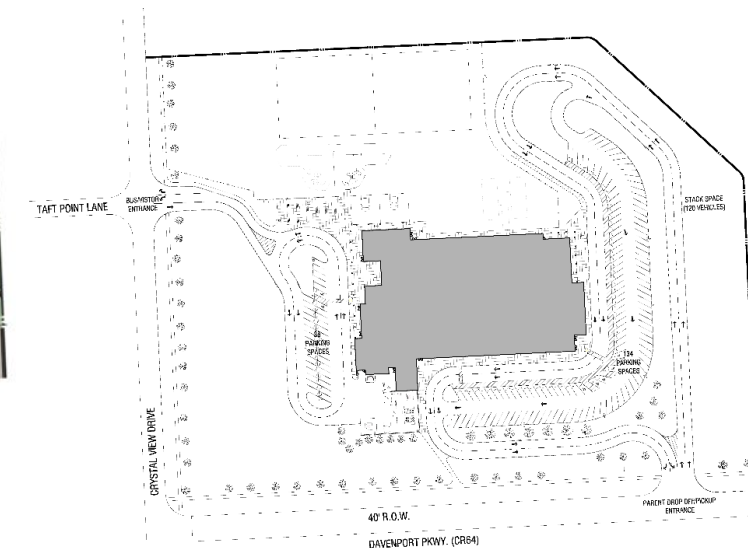
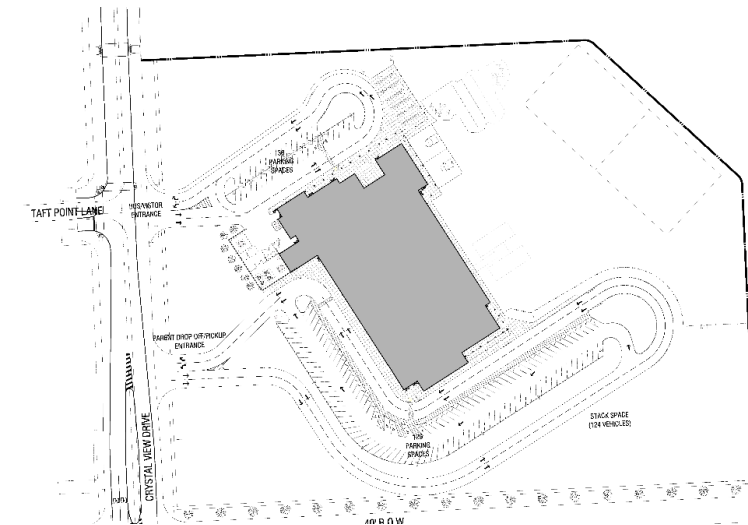
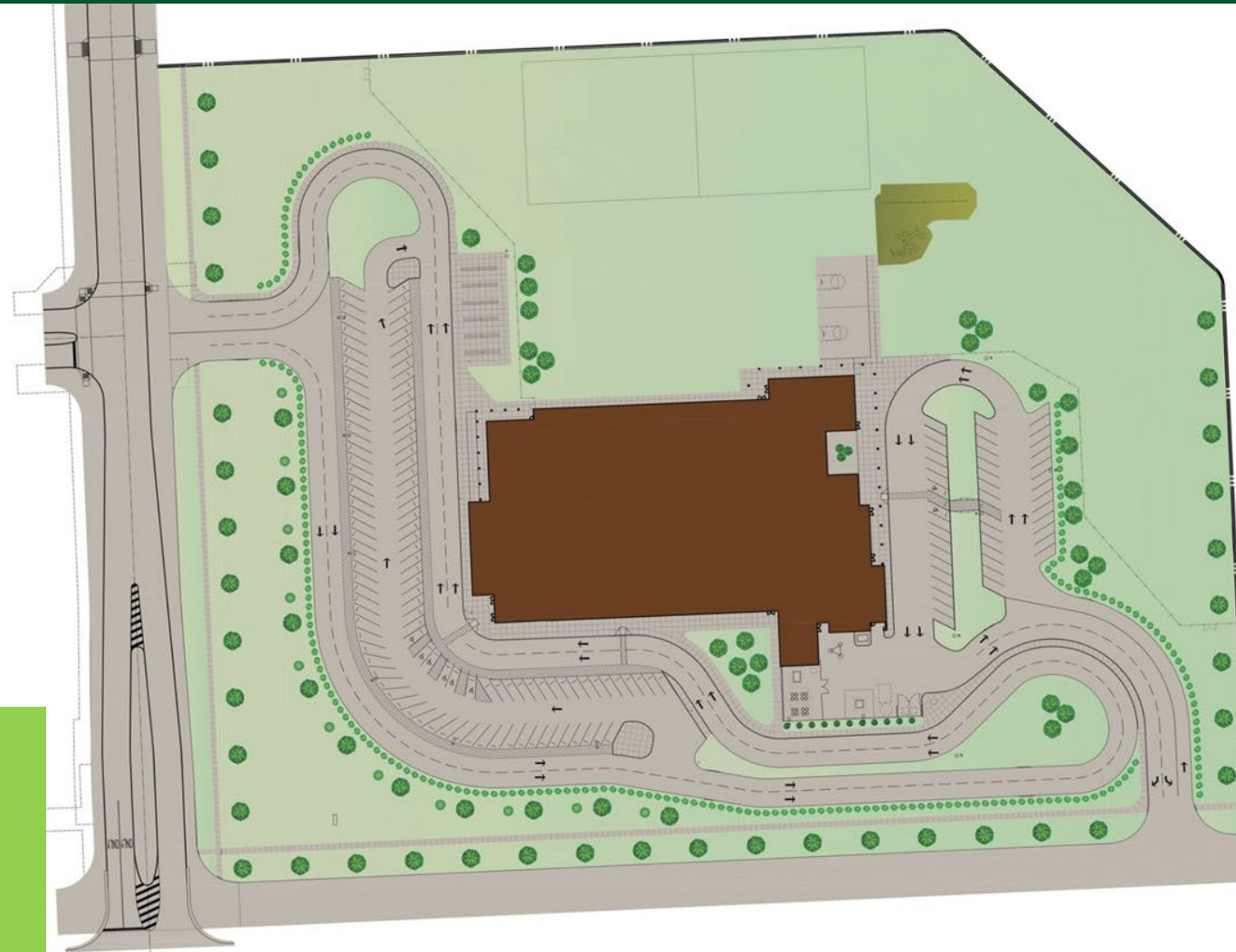


QR CODE



Panel Question 4:

What is the typical problem-solving design approach you apply to a site to determine if it is viable for a school district's needs?

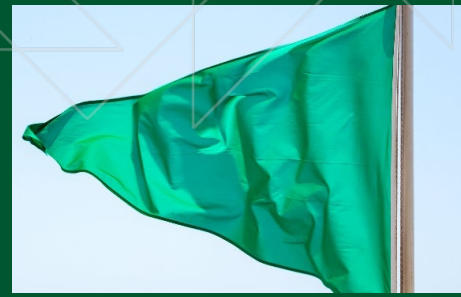


Panel Question 5:

How much do safety considerations such as traffic flow, locations of major roads, railroad tracks, high voltage power lines, and gas pipeline locations factor into the decision on determining what is a viable site?

QR CODE





Panel Question 6:

When doing facility property evaluation or sites with existing facilities to demolish, or adapt and reuse, what potential hazards do you look for to prevent a district from purchasing a “problem child” property?



QR CODE



Panel Question 7: Audience Questions



Panel Question 8:

What advice would you give other districts who are making a land purchase?



QR CODE

THANK YOU!

