



Designing Schools for All Learners:

Embracing Neurodiversity and CTE in Middle School Environments



Learning Objectives

- 1.** Gain a comprehensive understanding of the importance of designing schools that foster the success of all learners.
- 2.** Learn to prioritize key goals and aspirations in creating inclusive middle school environments, including planning, budgeting, and addressing unexpected construction challenges.
- 3.** Explore the importance of CTE courses and hands-on learning experiences and their connection to future career readiness.
- 4.** Evaluate best practices for accommodating neurodivergent students within middle school environments.

A4LE Southern Region Conference

Meet the Speakers



Tommy Osborne, AIA, LEED AP
Executive Director of Construction
Northwest ISD



Casey Helmick
Director of Planning
Northwest ISD



**Barbara Rystrom, AIA, NCARB,
LEED AP BD+C**
Sr. Project Manager, Associate
Perkins&Will



**Bob Davis, AIA,
LEED Green Associate, WELL AP**
Senior Architect, Associate
Perkins&Will



**Maggie Graham, AIA,
LEED Green Associate, WELL AP**
Project Architect, Associate
Perkins&Will

Agenda

- 1) History of Northwest ISD
- 2) Concept, Context, and Site Strategies
- 3) Design Strategy, Planning, and Interiors
- 4) Specific Overview of CTE, SPED, Career Readiness
- 5) Design Background in Construction
- 6) Q&A

History of Northwest ISD

About Northwest ISD

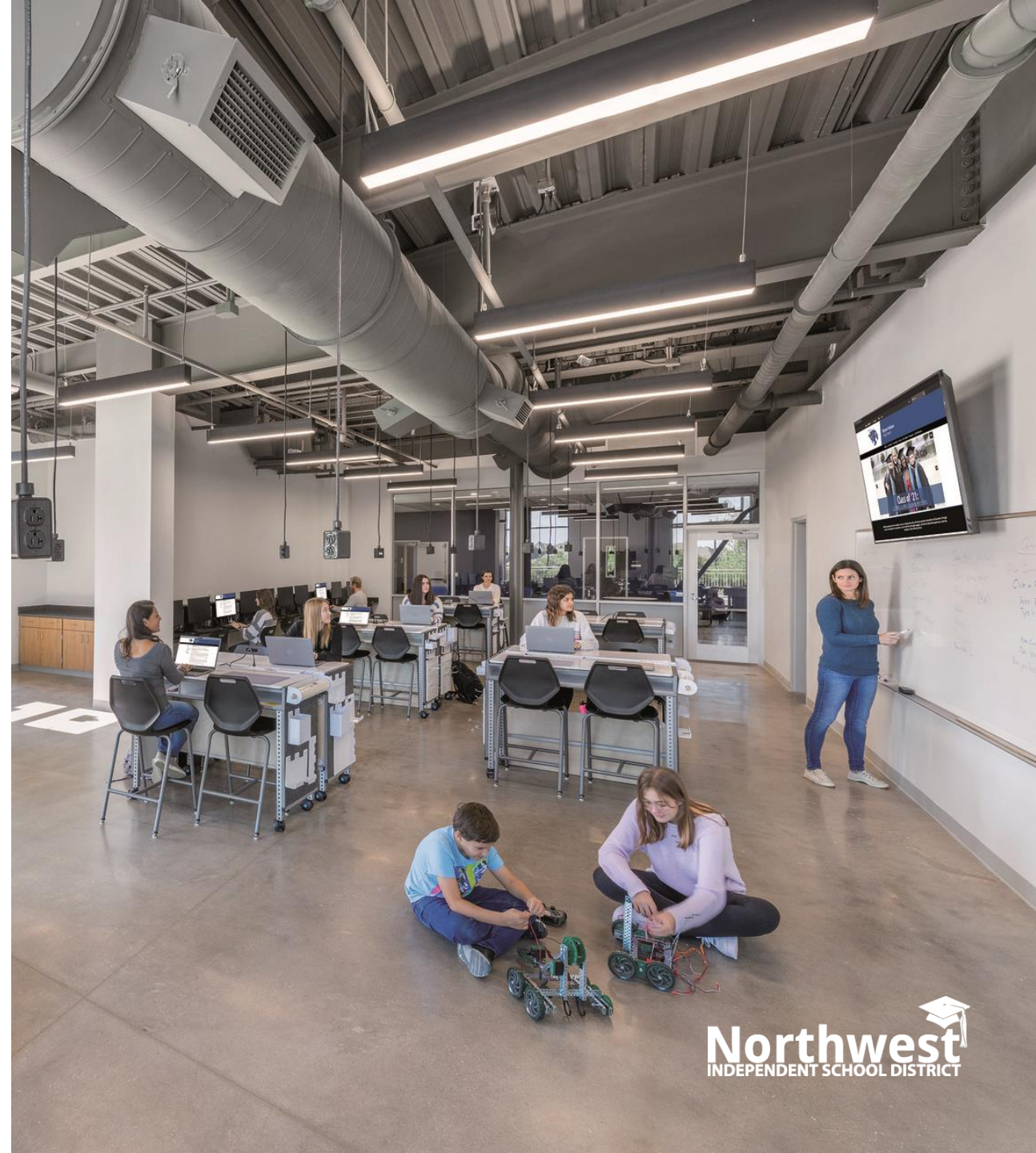
- Encompasses **234 square miles**
- Fastest growing district in the region, top 10 fastest growing district in Texas
- **34 campuses** (23 elementary schools, 8 middle schools, 3 comprehensive high schools, 1 early college high school and a Special Programs Center.
- **14+ towns and cities** across **three counties** (Denton, Tarrant, Wise)
- Expected to add 3,500 + homes each year for the next 2-3 years

A4LE Southern Region Conference

Student Diversity

- White 50.5%
- Hispanic/Latino 24.8%
- Black/African American 13.9%
- Asian 7.9%
- Two or more races 2%
- American Indian/Alaskan 1%

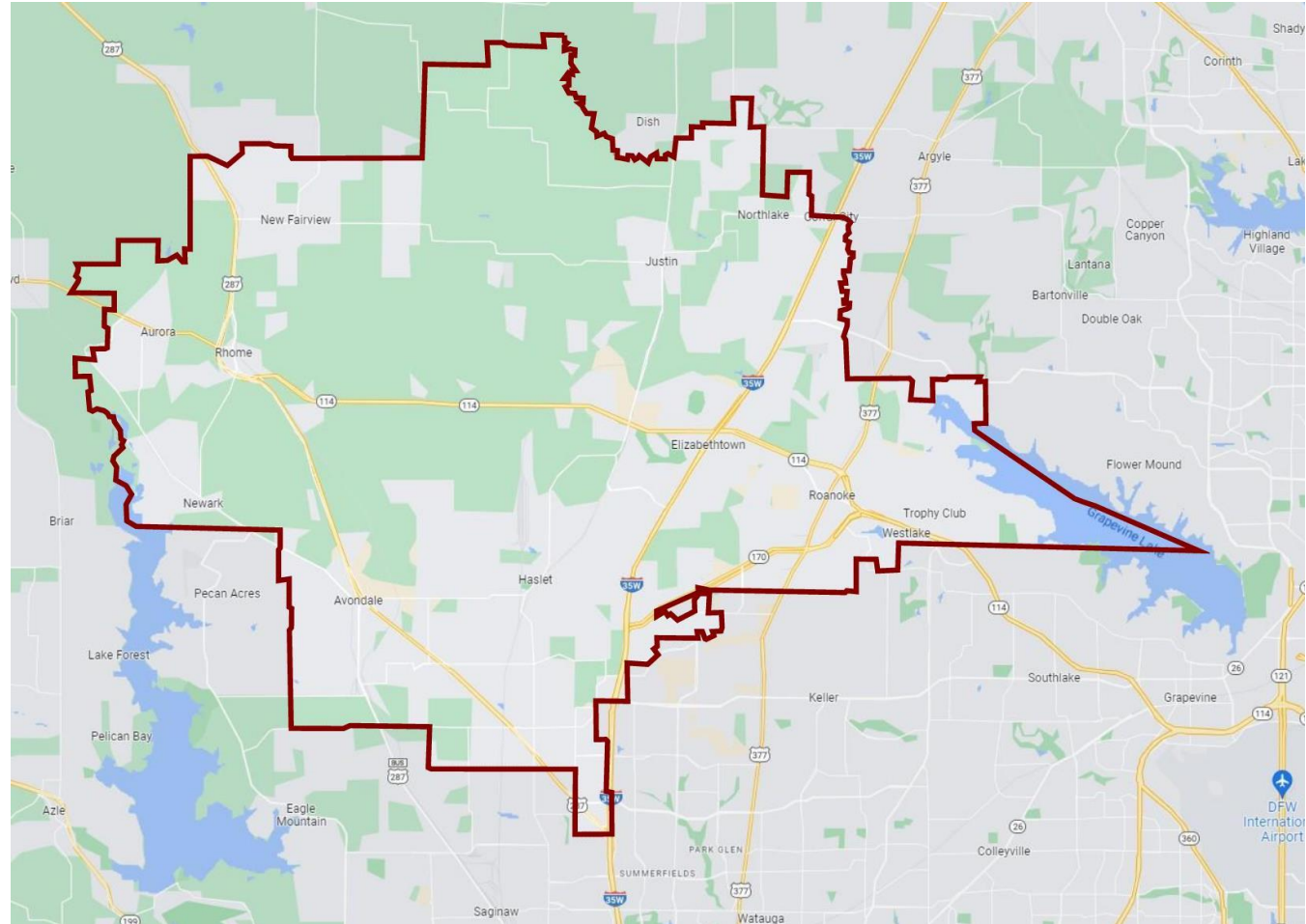
NISD students speak more than **69** languages.



A4LE Southern Region Conference

NISD Municipalities

- | | |
|--------------|--------------|
| Aurora | New Fairview |
| Flower Mound | Northlake |
| Fort Worth | Rhome |
| Haslet | Roanoke |
| Justin | Southlake |
| Keller | Trophy Club |
| Newark | Westlake |



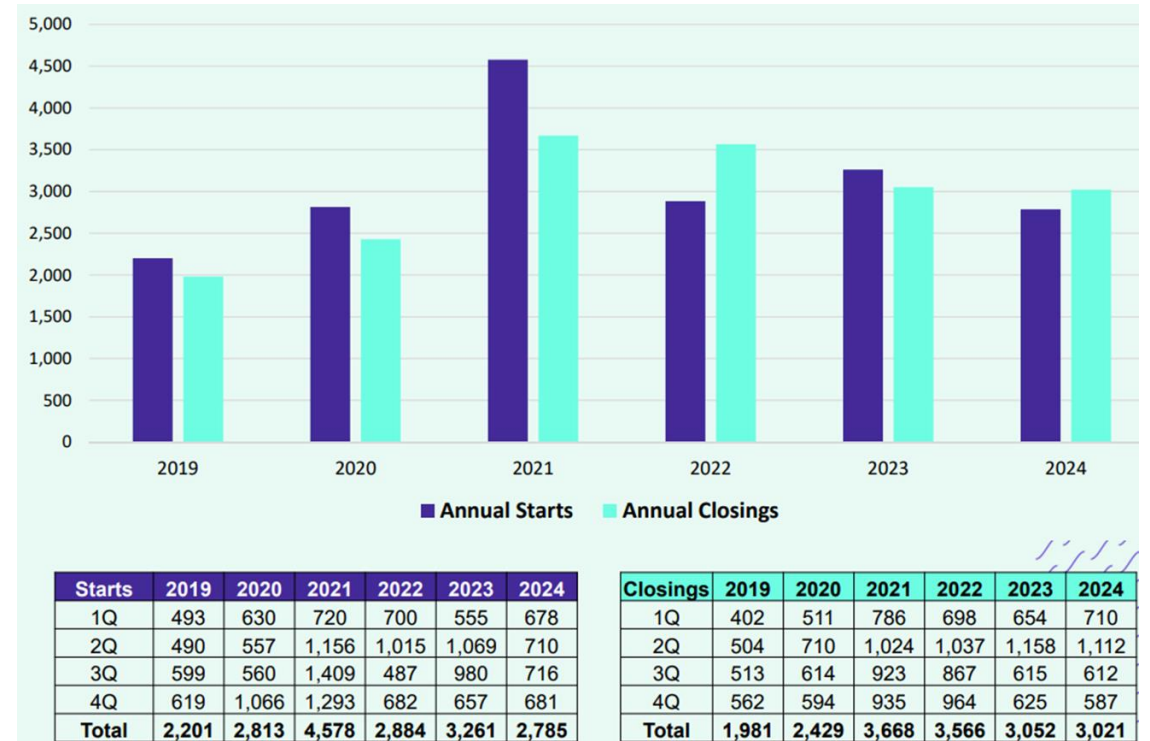
A4LE Southern Region Conference

DFW New Home Ranking Report

Ranked by Annual Closings 4Q24

Rank	District Name	Annual Starts	Annual Closings	Inventory	VDL	Future
1	NORTHWEST ISD	2,785	3,021	1,714	4,767	40,850
2	PROSPER ISD	2,370	2,860	1,328	3,352	15,651
3	PRINCETON ISD	3,377	2,835	1,766	3,860	9,909
4	DENTON ISD	2,238	2,519	1,296	3,039	25,586
5	MCKINNEY ISD	2,242	2,261	1,184	4,160	17,705
6	EMS ISD	1,676	2,213	650	1,946	10,865
7	FORNEY ISD	1,916	2,007	1,167	3,712	22,477
8	AUBREY ISD	2,069	1,961	1,081	1,688	8,751
9	CRANDALL ISD	1,906	1,435	1,031	2,721	15,302
10	COMMUNITY ISD	1,647	1,367	987	2,567	9,541
11	CROWLEY ISD	1,220	1,257	652	2,943	12,235
12	DALLAS ISD	1,318	1,244	1,291	2,199	4,717
13	CELINA ISD	1,781	1,192	1,231	5,076	44,191
14	ANNA ISD	1,150	1,137	630	1,723	14,791
15	MANSFIELD ISD	1,200	1,064	834	1,724	6,971
16	ROYSE CITY ISD	922	1,055	538	2,842	13,157
17	FRISCO ISD	1,210	1,031	841	2,091	7,445
18	MELISSA ISD	754	1,017	387	1,065	1,899
19	ROCKWALL ISD	1,276	1,001	898	2,780	12,113
20	MIDLOTHIAN ISD	1,146	954	701	2,083	11,617





District New Home Activity

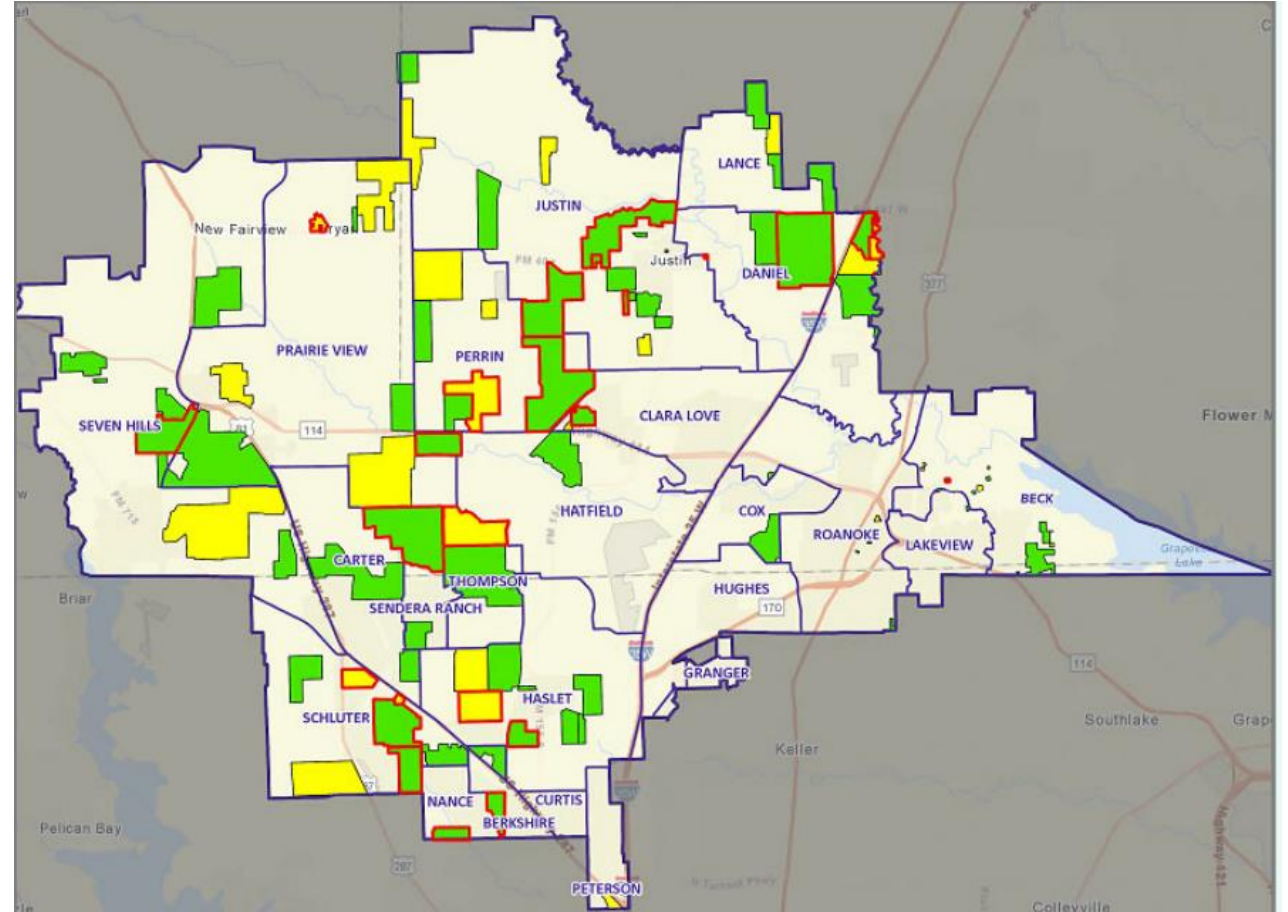


A4LE Southern Region Conference

District Housing Overview

- The district has 69 actively building divisions
- Within NISD there are 32 future subdivisions in various stages of planning
- Of these, groundwork is underway on nearly 6,300 lots within 18 subdivisions
- 1,626 lots were delivered in the 4th quarter


-  Groundwork Underway
-  Active
-  Future
-  Elementary Attendance Zones

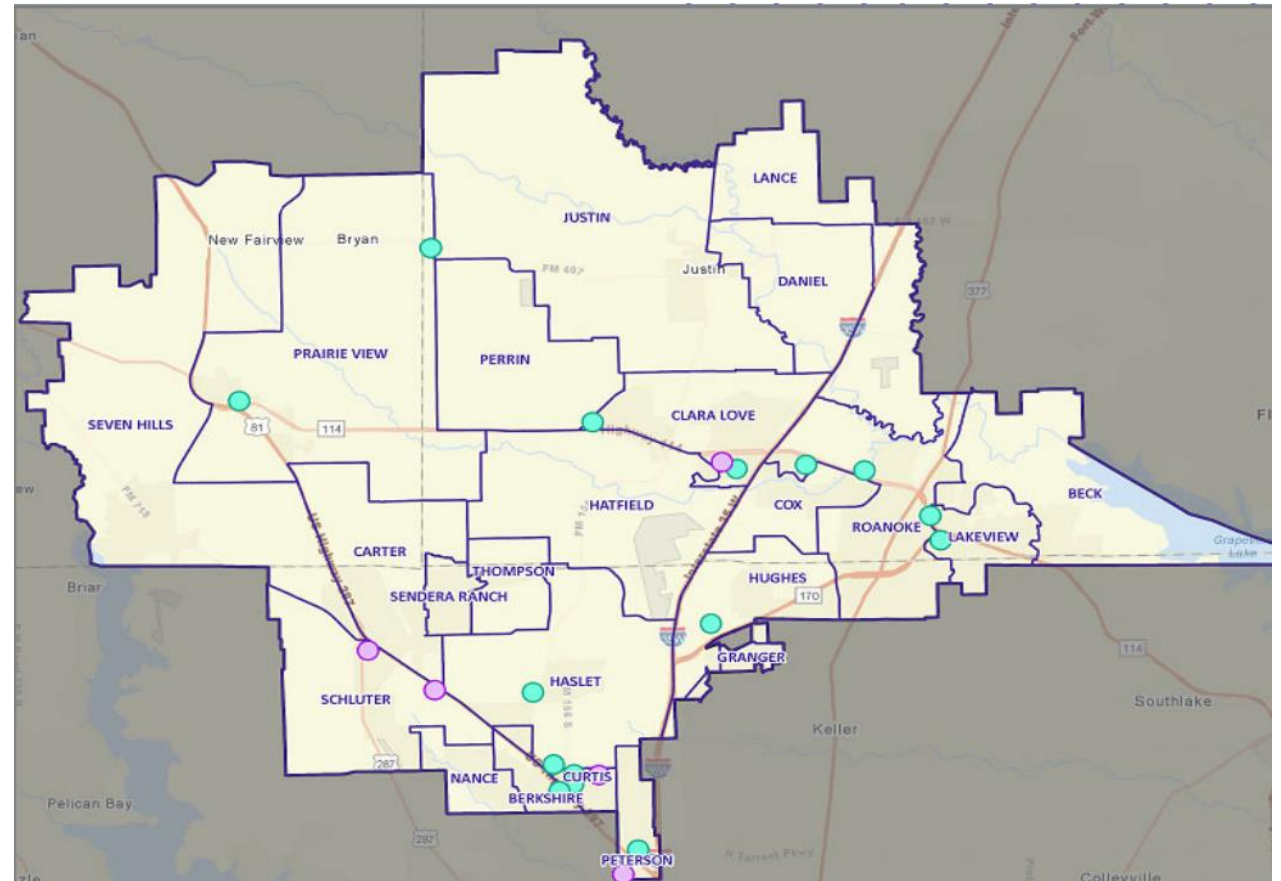


District Multifamily Overview

- There are approximately 1,375 rental units currently under construction in NISD, 632 of which are single family rental homes
- There are nearly 6,300 future rental units in various stages of planning across the district

Multi-Family Developments

-  FUTURE
-  UNDER CONSTRUCTION



A4LE Southern Region Conference

Ten Year Forecast by Grade Level

Yellow box= largest grade per, year
Green box= second largest grade per year

Year (Oct.)	EE	PK	K	1st	2nd	3rd	4th	5th	6th	7th	8th	9th	10th	11th	12th	Total	Growth	% Growth
2020/21	176	339	1,675	1,808	1,912	1,983	1,910	1,963	1,968	2,020	2,079	2,078	2,017	1,820	1,635	25,383		
2021/22	189	449	1,982	1,969	2,060	2,116	2,170	2,101	2,128	2,126	2,164	2,324	2,133	1,929	1,743	27,583	2,200	8.7%
2022/23	209	565	2,081	2,180	2,141	2,241	2,267	2,300	2,197	2,235	2,229	2,399	2,318	2,044	1,842	29,248	1,665	6.0%
2023/24	254	903	2,116	2,249	2,313	2,249	2,384	2,342	2,416	2,231	2,341	2,421	2,429	2,169	1,984	30,801	1,553	5.3%
2024/25	217	1,075	2,253	2,245	2,402	2,419	2,381	2,488	2,440	2,498	2,303	2,497	2,426	2,280	2,098	32,022	1,221	4.0%
2025/26	218	1,064	2,385	2,476	2,373	2,545	2,558	2,489	2,504	2,534	2,598	2,430	2,490	2,328	2,203	33,196	1,174	3.7%
2026/27	215	1,105	2,502	2,605	2,577	2,485	2,676	2,673	2,510	2,618	2,643	2,740	2,430	2,391	2,261	34,430	1,235	3.7%
2027/28	215	1,115	2,643	2,731	2,735	2,714	2,617	2,805	2,669	2,621	2,716	2,811	2,733	2,329	2,317	35,771	1,341	3.9%
2028/29	215	1,127	2,777	2,888	2,866	2,885	2,861	2,740	2,792	2,786	2,726	2,856	2,808	2,623	2,257	37,207	1,436	4.0%
2029/30	215	1,127	2,875	3,015	3,011	3,001	3,009	2,981	2,711	2,918	2,897	2,869	2,854	2,695	2,541	38,718	1,511	4.1%
2030/31	215	1,146	2,975	3,108	3,144	3,159	3,130	3,135	2,934	2,834	3,032	3,038	2,866	2,738	2,610	40,065	1,346	3.5%
2031/32	215	1,161	3,103	3,239	3,249	3,300	3,299	3,265	3,073	3,068	2,946	3,188	3,034	2,749	2,651	41,540	1,475	3.7%
2032/33	215	1,179	3,213	3,361	3,385	3,405	3,440	3,431	3,182	3,215	3,190	3,080	3,186	2,912	2,661	43,055	1,515	3.6%
2033/34	215	1,192	3,329	3,482	3,516	3,553	3,546	3,575	3,314	3,329	3,346	3,355	3,077	3,057	2,818	44,704	1,649	3.8%
2034/35	215	1,220	3,440	3,595	3,633	3,682	3,699	3,691	3,438	3,469	3,462	3,513	3,354	2,952	2,956	46,319	1,615	3.6%

A4LE Southern Region Conference

Ten Year Forecast by Secondary Campus

Campus	Capacity	Fall	ENROLLMENT PROJECTIONS									
		2024/25	2025/26	2026/27	2027/28	2028/29	2029/30	2030/31	2031/32	2032/33	2033/34	2034/35
Adams Middle School	1,200	914	964	966	990	1,009	1,032	1,054	1,102	1,178	1,217	1,256
Chisholm Trail Middle School	1,100	881	966	971	1,003	1,067	1,121	1,186	1,255	1,368	1,466	1,574
Gene Pike Middle School	1,200	1,134	1,210	1,273	1,357	1,486	1,562	1,740	1,883	2,077	2,183	2,287
Medlin Middle School	1,200	1,112	1,151	1,174	1,188	1,156	1,126	1,080	1,071	1,073	1,090	1,103
Tidwell Middle School	1,200	1,064	1,087	1,056	1,022	1,011	965	958	930	957	982	991
Wilson Middle School	1,200	935	1,007	1,052	1,145	1,187	1,248	1,264	1,312	1,339	1,397	1,439
Worthington Middle School	1,200	1,201	1,251	1,278	1,301	1,388	1,472	1,519	1,533	1,595	1,654	1,719
MIDDLE SCHOOL TOTALS	8,300	7,241	7,636	7,770	8,006	8,304	8,526	8,801	9,086	9,587	9,989	10,369
Middle School Absolute Growth		253	395	134	236	298	222	275	286	501	402	380
Middle School Percent Growth		3.62%	5.46%	1.75%	3.03%	3.72%	2.67%	3.22%	3.25%	5.51%	4.19%	3.80%
Northwest High School	3,200	2,669	2,719	2,890	2,984	3,095	3,318	3,465	3,694	3,900	4,217	4,570
Byron Nelson High School	3,200	2,967	3,018	3,115	3,194	3,296	3,351	3,326	3,318	3,210	3,148	3,132
Eaton High School	3,200	3,304	3,353	3,456	3,651	3,792	3,929	4,100	4,249	4,368	4,581	4,712
Steele Early College High School	450	310	310	310	310	310	310	310	310	310	310	310
Denton County JJAEP		1	1	1	1	1	1	1	1	1	1	1
Legacy Learning Center		50	50	50	50	50	50	50	50	50	50	50
HIGH SCHOOL TOTALS	10,050	9,301	9,451	9,822	10,190	10,544	10,959	11,252	11,622	11,839	12,307	12,775
High School Absolute Growth		298	150	371	368	354	415	293	370	217	468	468
High School Percent Growth		3.31%	1.61%	3.93%	3.75%	3.47%	3.94%	2.67%	3.29%	1.87%	3.95%	3.80%
DISTRICT TOTALS	37,700	32,022	33,196	34,430	35,771	37,207	38,718	40,065	41,540	43,055	44,704	46,319
District Absolute Growth		1,221	1,174	1,235	1,341	1,436	1,511	1,346	1,475	1,515	1,649	1,615
District Percent Growth		4.0%	3.7%	3.7%	3.9%	4.0%	4.1%	3.5%	3.7%	3.6%	3.8%	3.6%

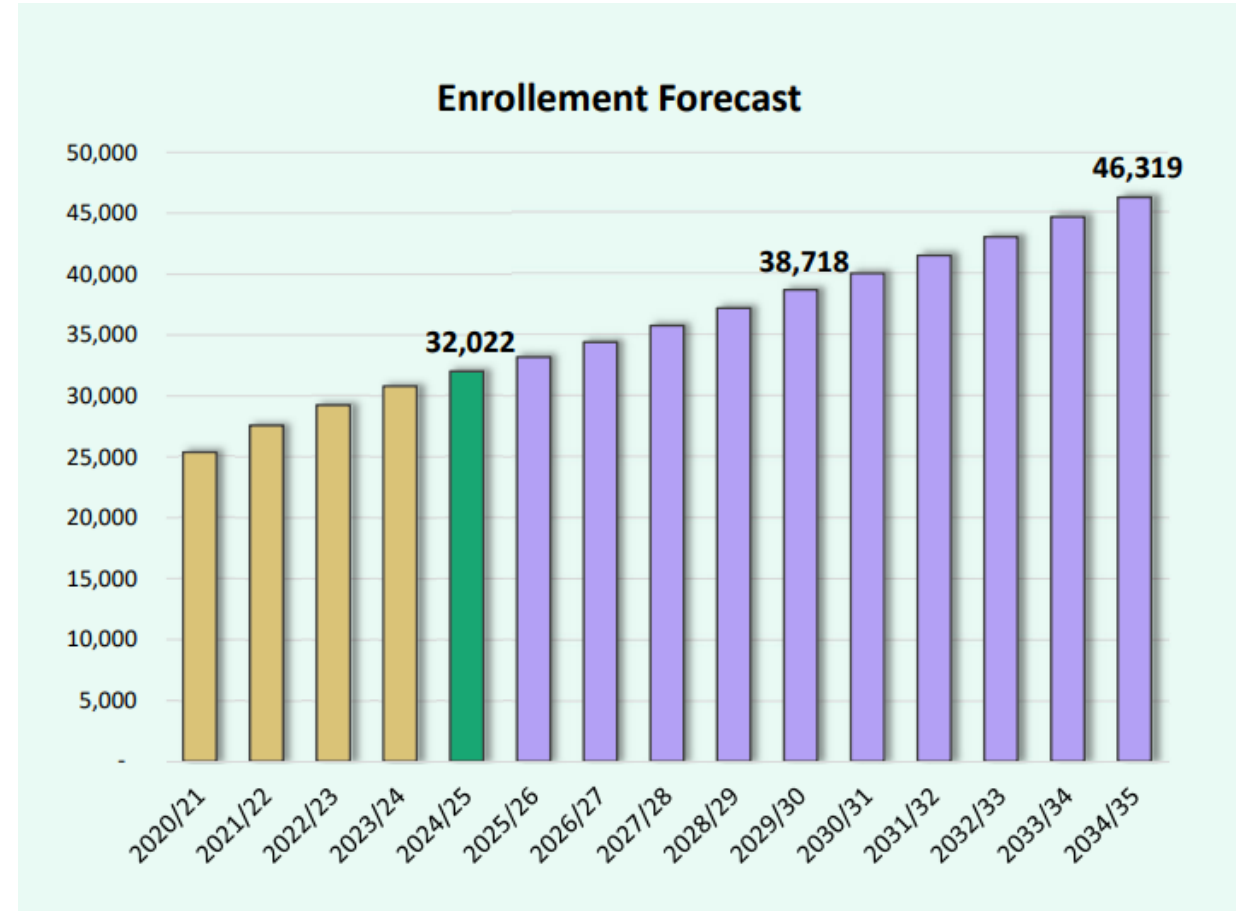
Green= Enrollment within 5% of capacity

Yellow= Enrollment greater than 5%

A4LE Southern Region Conference

Key Takeaways

- The district has 69 actively building subdivisions with more than 4,750 lots available to build on
- NISD has 32 future subdivisions with appx. 40,850 lots in the planning stages
- Groundwork is currently underway on nearly 6,300 lots within 18 subdivisions
- 1Q25 will be key quarter for a new home starts to determine if the annual rate will impact the enrollment projections
- NISD is forecasted to enroll more than 38,700 students in 2029/30 and roughly 46,300 by 2034/35



2023 Bond Proposal

PROPOSAL PROVIDES SPACES FOR 8,400 ADDITIONAL STUDENTS

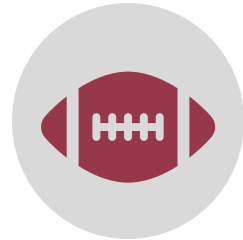
Scan for more information
Nisdtxbond.org



Proposition A

Educational Facilities & Capital Improvements

\$1,672,193,000



Proposition B

Home Stadiums & Field Renovations

\$301,555,000



Proposition C

Technology Devices

\$21,752,000

New Schools in May 2023 Bond

- One New High School (Comprehensive HS #4)
- One New Middle School
- Four New Elementary Schools
- Two Replacement Elementary Schools (Justin ES & Prairie View ES)
- Four Early Childhood Centers

Concept, Context, and Site Strategies

Contextual Influence

Why it matters...

Who you are as a **community**.

The **pride** you have as a district.

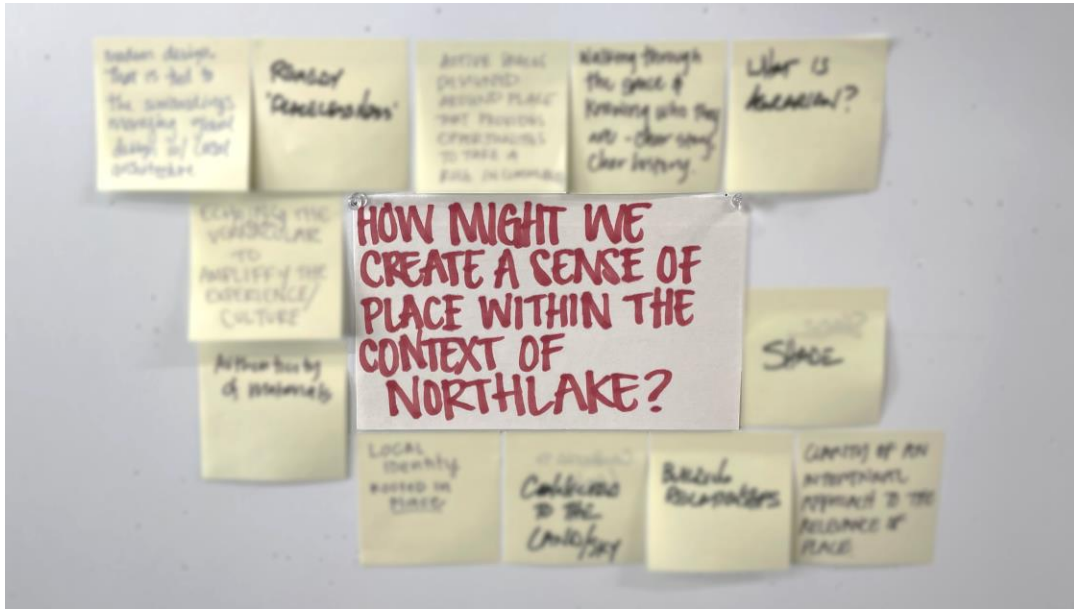
The contextual relevance to building a **sense of place**.

Histories that influence **culture and identity**.

Creating a safe place to **inspire kids** and **enhance learning**.



Vision Q1



Pecan Square has strong sense of place

Rural and laid back

NISD Outdoor Learning Center

Views from the site

Modern and forward thinking

Rustic materials balanced with abundant glazing



Vision Q2



Student independence and agency

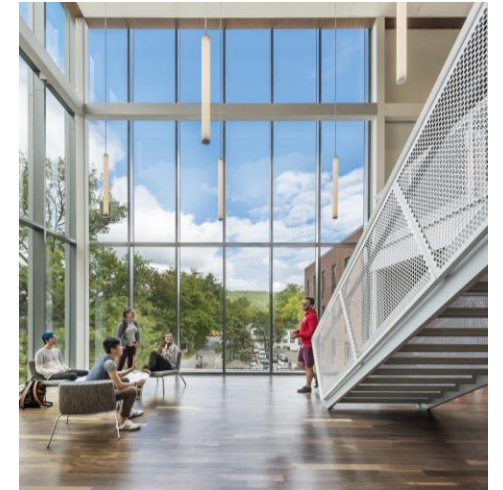
Building good habits

Elevated experience but also durable

Large collaboration areas

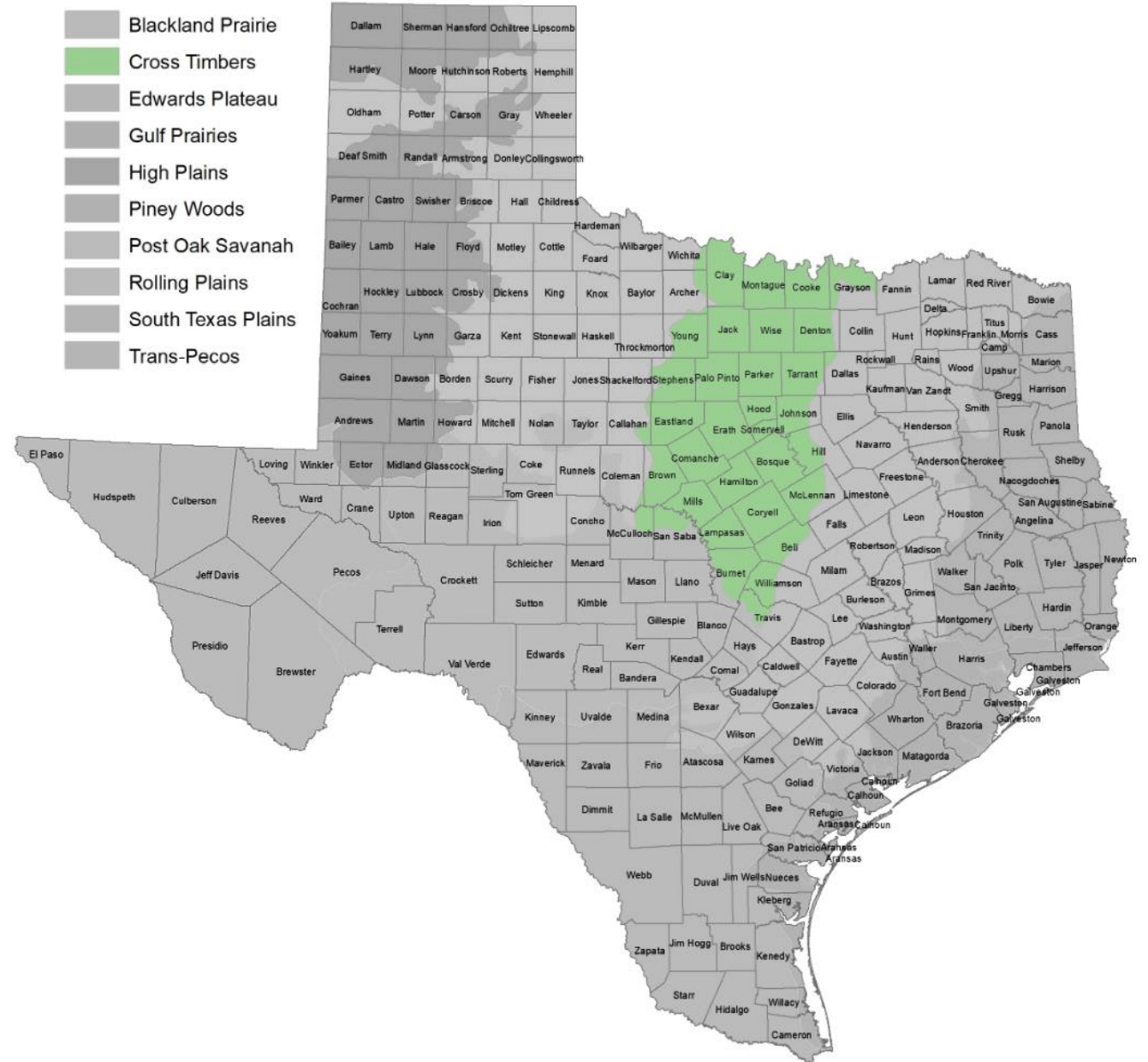
Programmatic fluidity

Spaces for co-teaching



Cross Timbers - Region

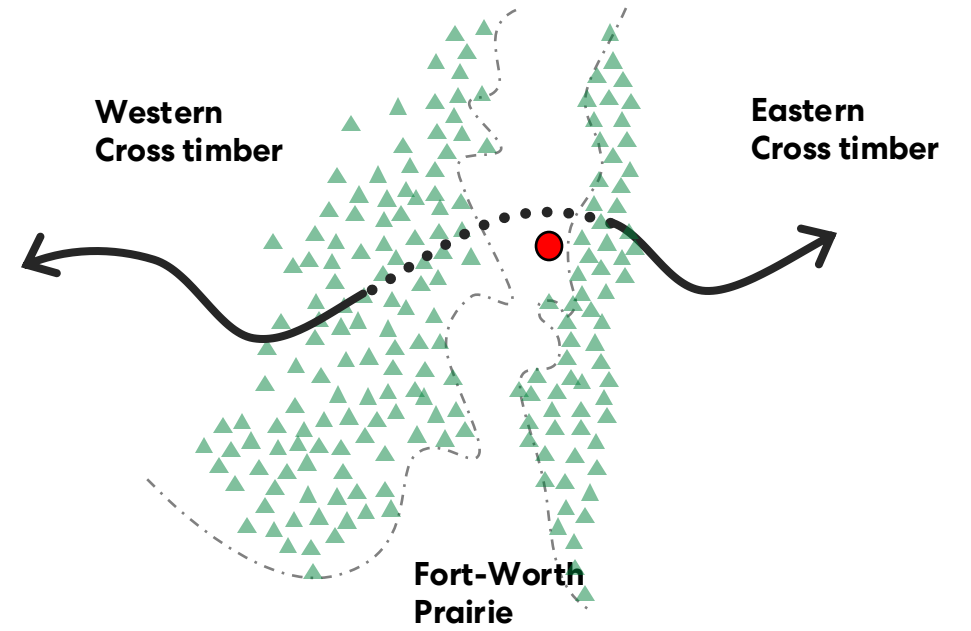
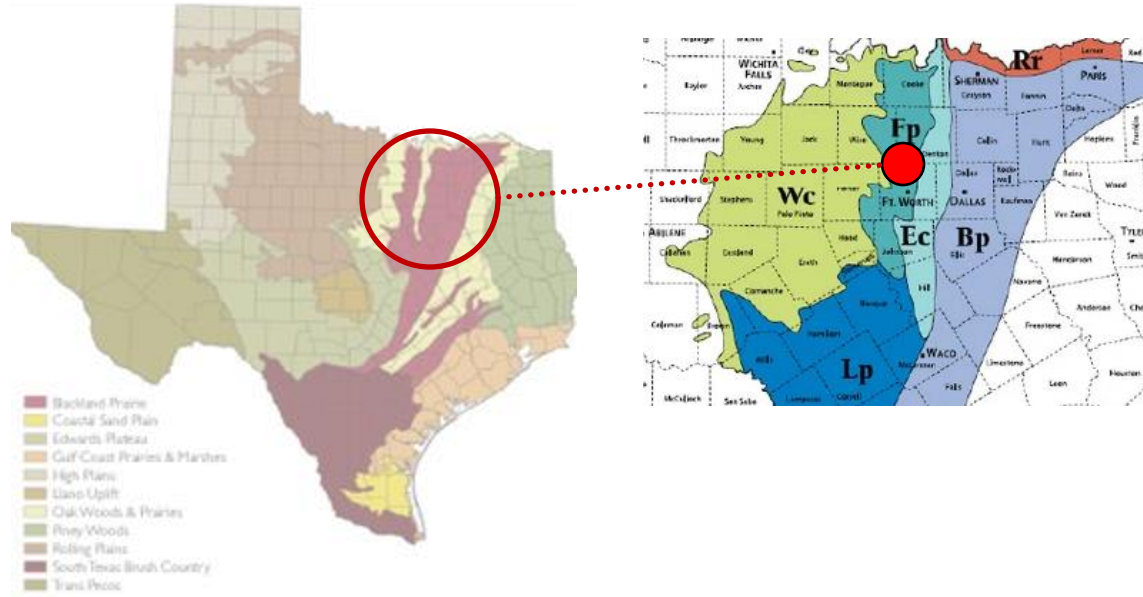
Western Cross Timber
 Destination
 Passage | Journey
 Exploration & Legacy
 Creating Connections



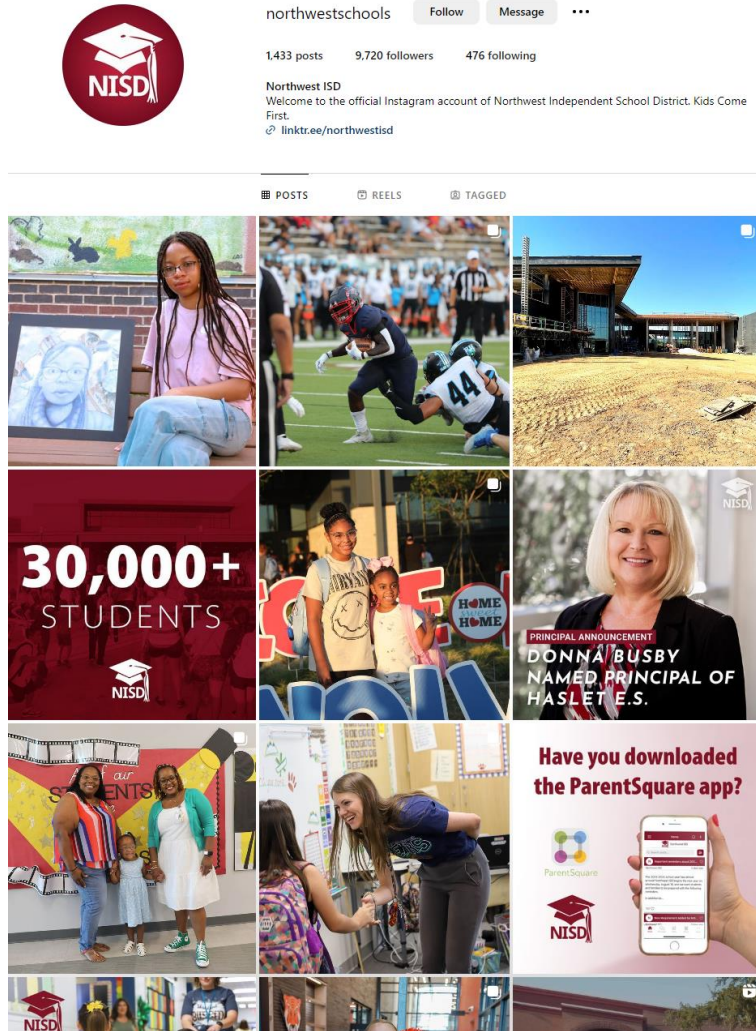
Trees for Cross Timber Species

- Pecan
- Black Walnut
- Sycamore
- Eastern Cottonwood
- Plateau Live Oak
- Bur Oak
- Blackjack Oak
- American Elm
- Texas Persimmon
- Little Walnut
- Honey Mesquite
- Lance-leaf Sumac
- Mexican Plum
- Ashe Juniper
- Eastern Red Cedar

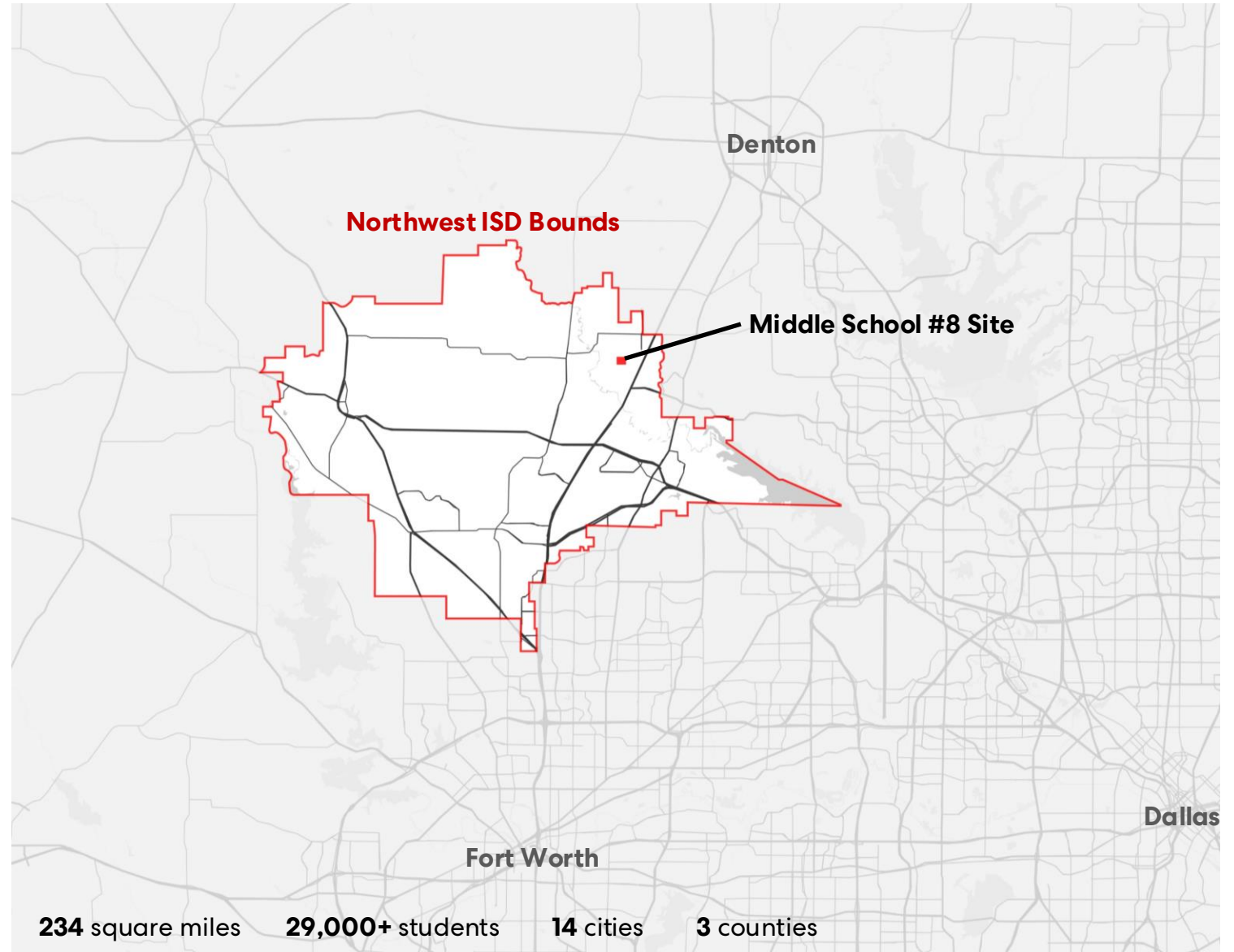
Ecoregion- Fort Worth Prairie



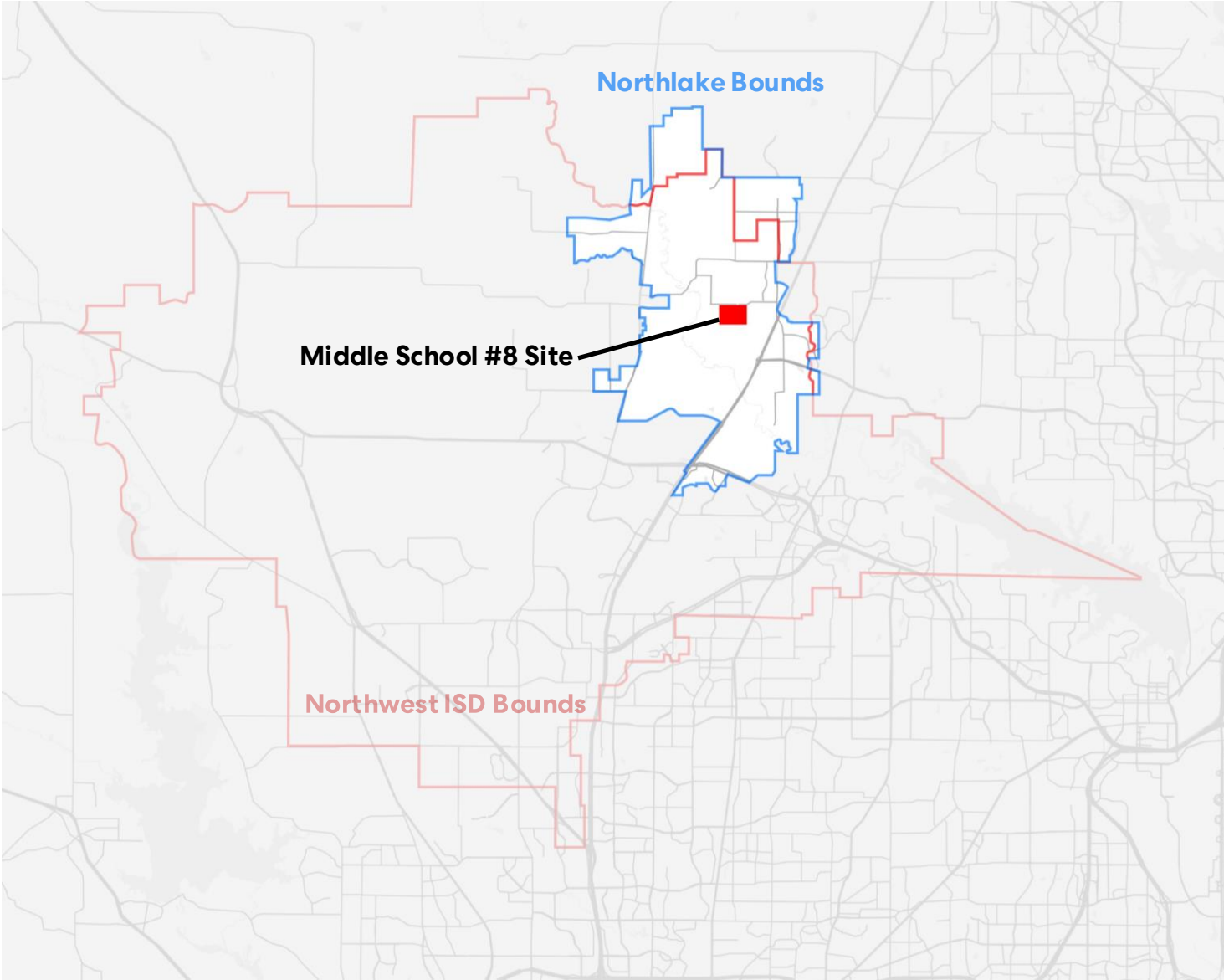
Northwest ISD - Culture



The image shows the Instagram profile for Northwest ISD (@northwestschools). The profile picture is a red circle with a white graduation cap and the letters "NISD". The bio reads: "Northwest ISD Welcome to the official Instagram account of Northwest Independent School District. Kids Come First. linktr.ee/northwestisd". The post grid includes a student sitting in front of a portrait, a football game, a modern school building, a graphic for "30,000+ STUDENTS", a principal announcement for Donna Busby, and a promotion for the ParentSquare app.



Northlake – Community & Place

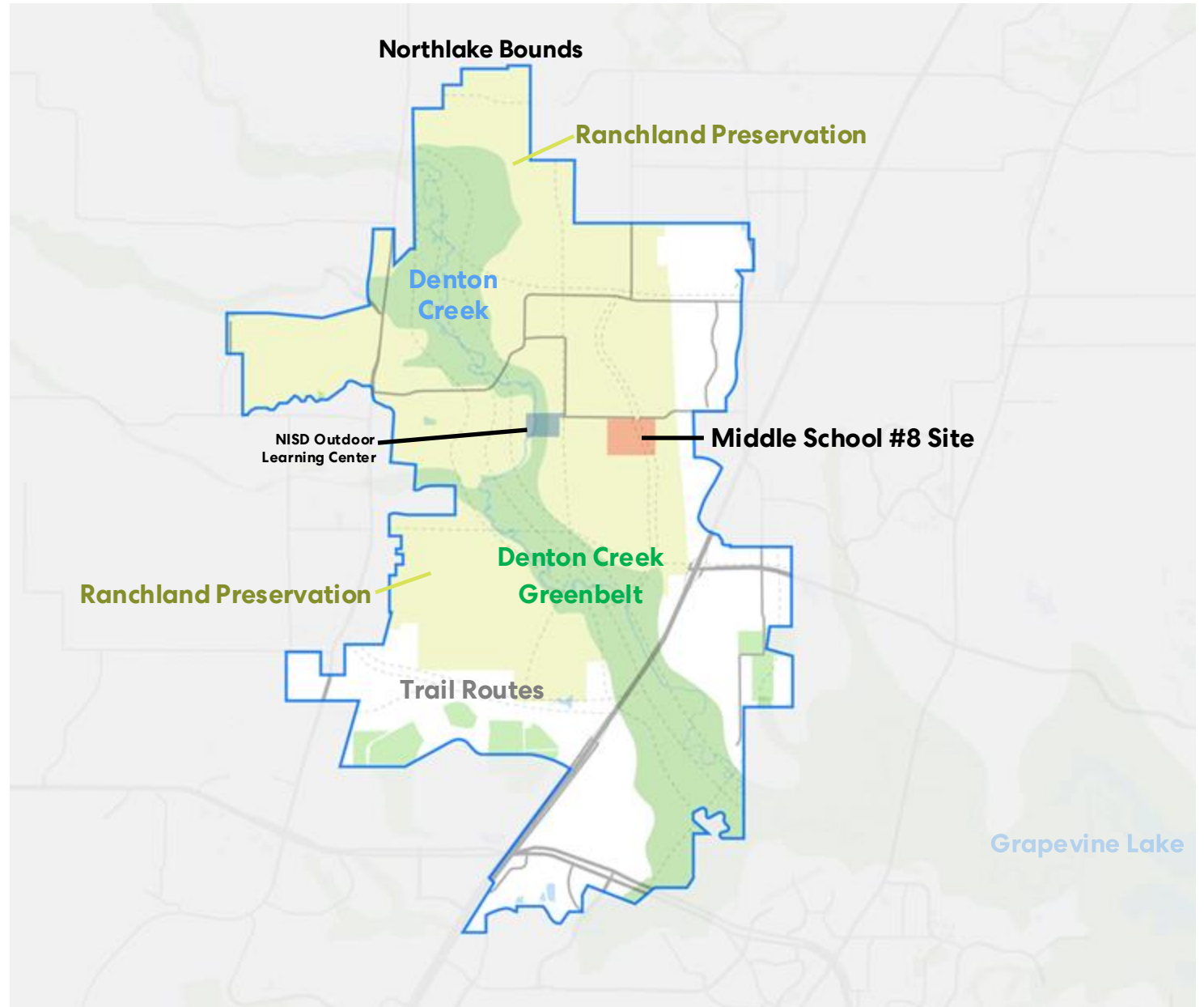


Natural Influence

Ranchland Preservation

Waterways

Greenbelts

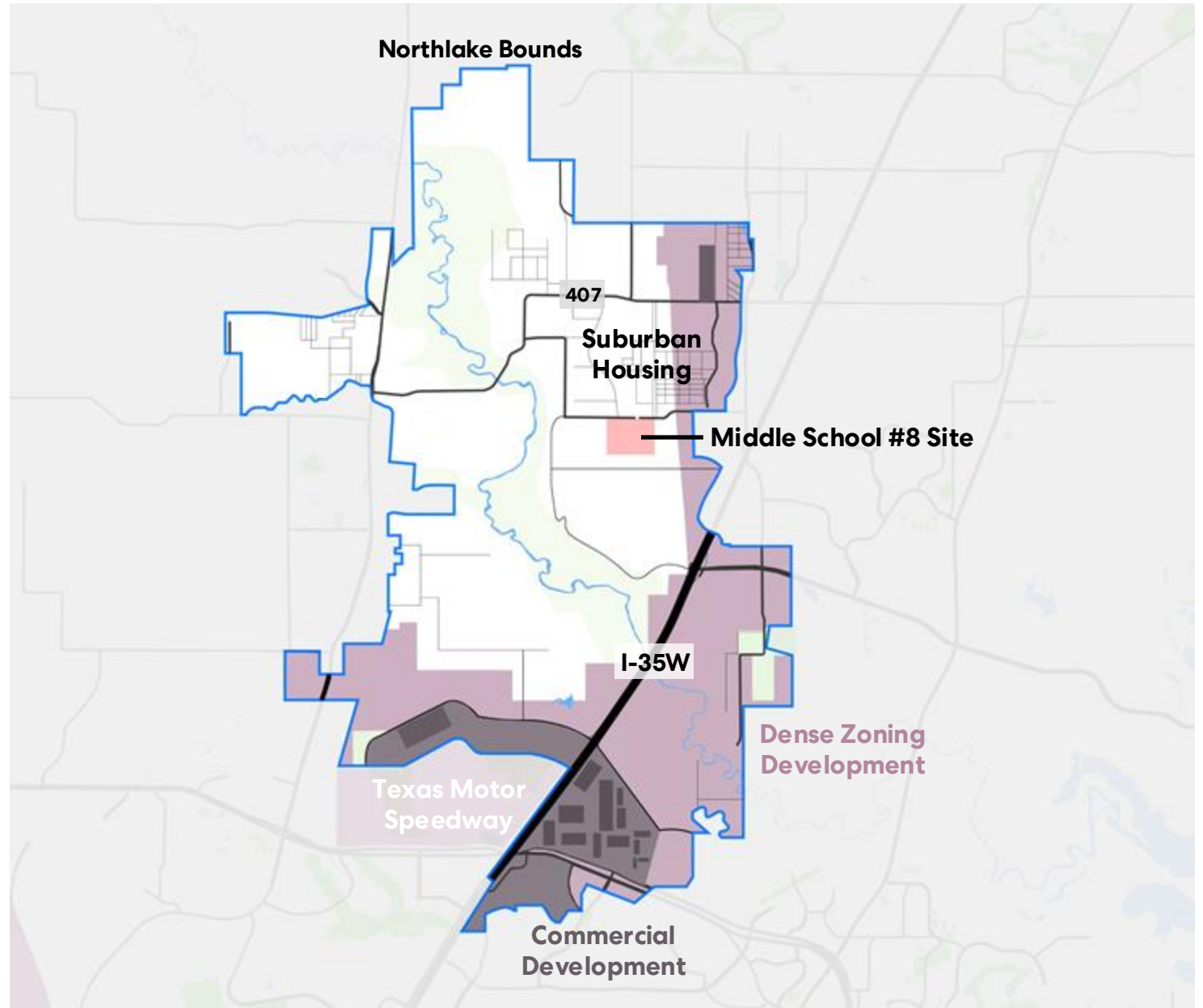


Existing Infrastructure

Suburban Lifestyle

Commercial Developments

Roadways



Creating a Common Identity

Northwest ISD

Core Beliefs

1. Kids come first
2. Continuous learning is essential to prepare for **college and career opportunities**
3. Each student's success is the **shared responsibility** of student, families, schools, and communities
4. Learning is influenced by **environment**

Vision

Northwest ISD empowers learners and leaders to positively **impact the world**

Mission

Northwest ISD, In collaboration with students, families, communities, and global partners, will **engage in a culture of learning** that prepares all students to **confidently navigate their future**

Northlake, Texas

2040 - Vision

Northlake is a town that honors its **rural legacy** while attracting a **multi-generational**, family orientated and highly **engaged** population through policies that promote **responsible growth**, self-reliance and a diversified tax base.

The top priorities from public input for vision 2040 were:

maintaining **rural character**; growth management; and creating/maintaining a sense of **community**.

Creating Architectural Strategies

STUDENT CENTRIC

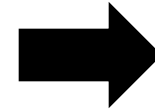
PREPARING STUDENTS FOR SUCCESS BEYOND

INFLUENCED BY ENVIRONMENT

NAVIGATING THE WORLD

IMPACTING COMMUNITY

CELEBRATING GEOGRAPHICAL CONTEXT



STUDENT AGENCY

INNOVATION

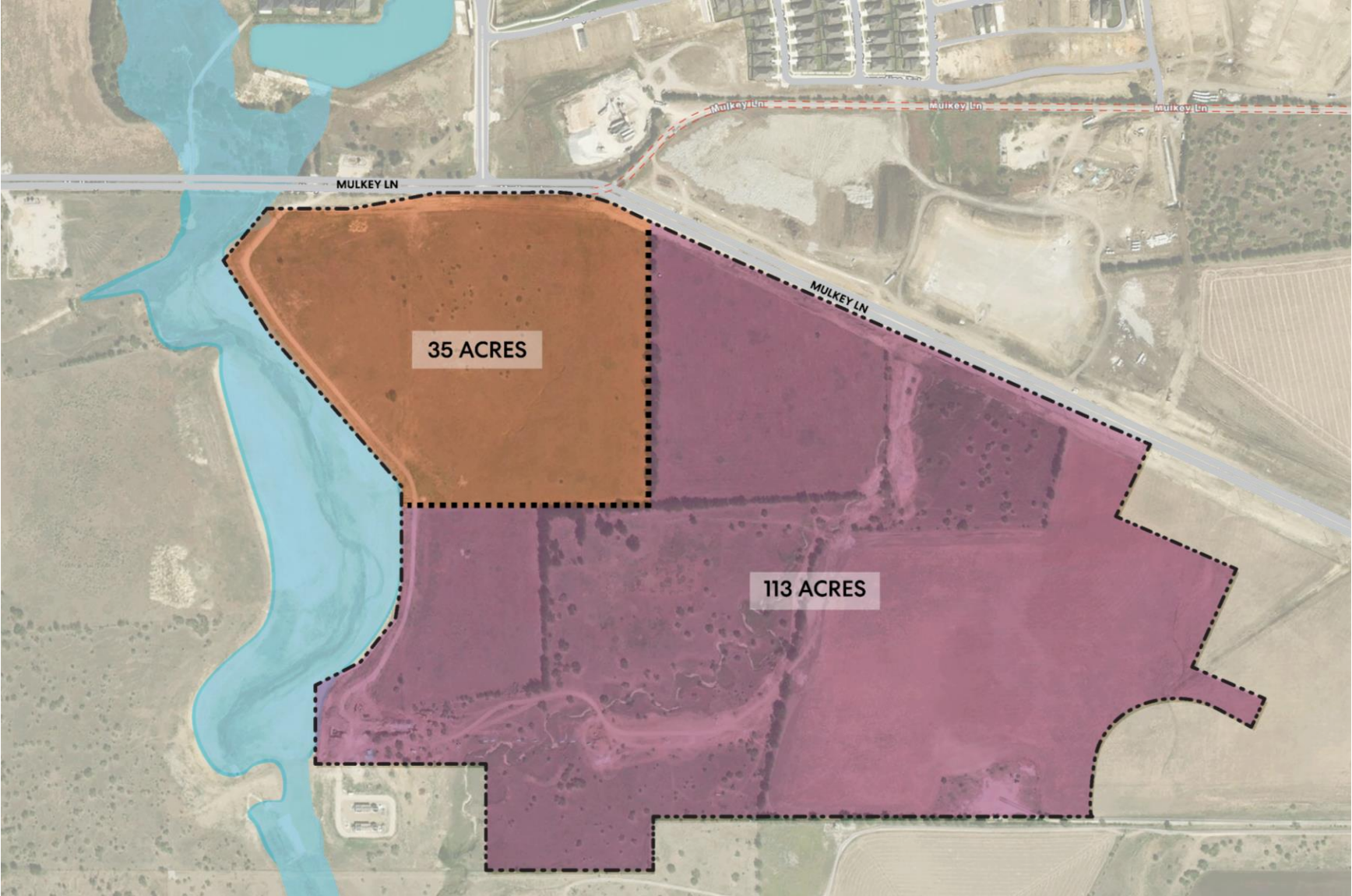
WELLNESS & WELLBEING



CREATING DISCOVERY

MULTI-USE SPACE

HONEST MATERIALS

Site Masterplan



-  MIDDLE SCHOOL ALLOCATION
-  HIGH SCHOOL ALLOCATION

LOCATION



DENTON

RETAIL

PECAN SQUARE
COMMUNITY

RETAIL

SITE

HOUSING
DEVELOPMENT

FORT WORTH

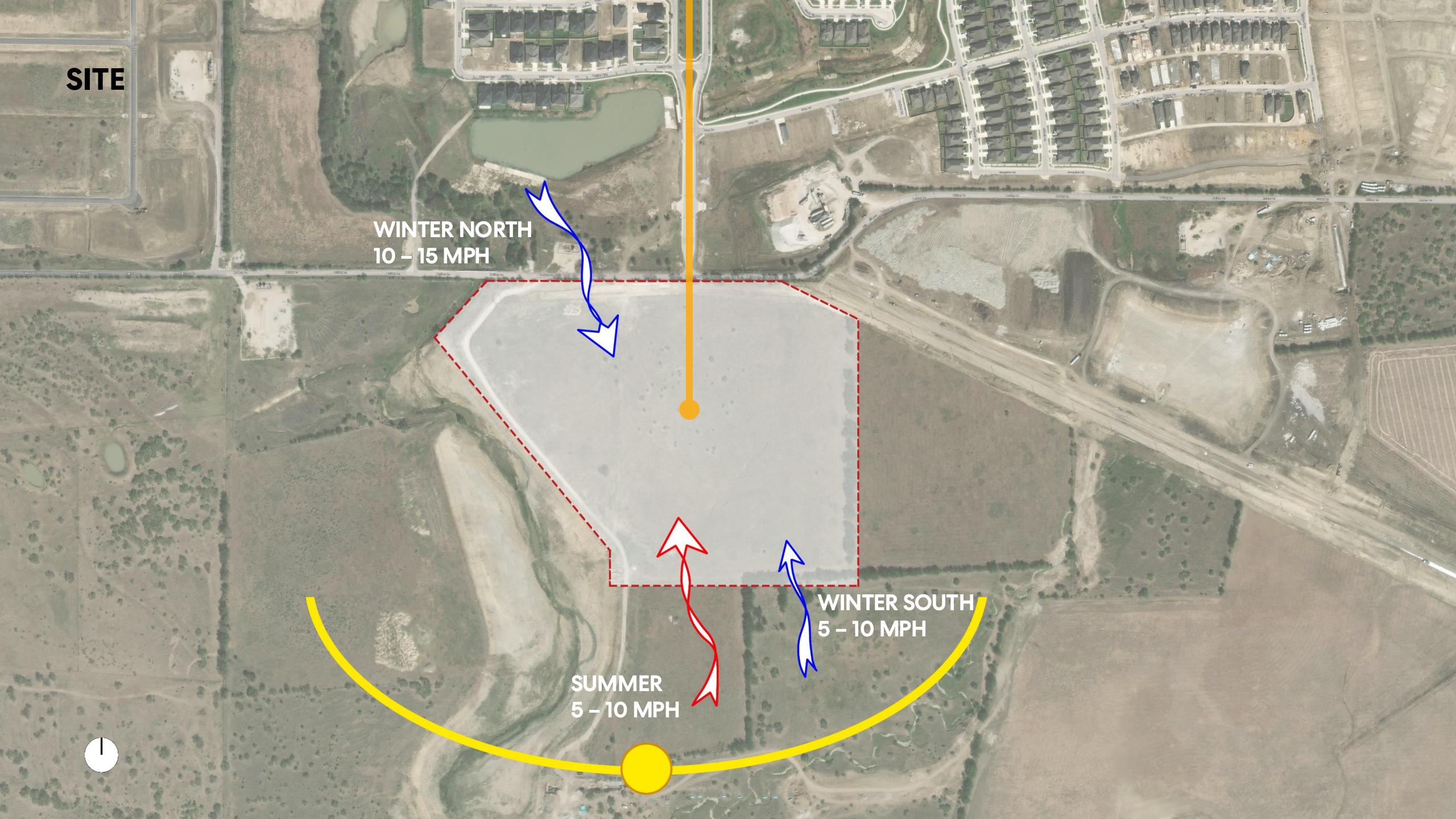


SITE

WINTER NORTH
10 – 15 MPH

WINTER SOUTH
5 – 10 MPH

SUMMER
5 – 10 MPH



SITE

SOUTH PECAN WAY

MULKEY LN

15' of fall to SW



SITE

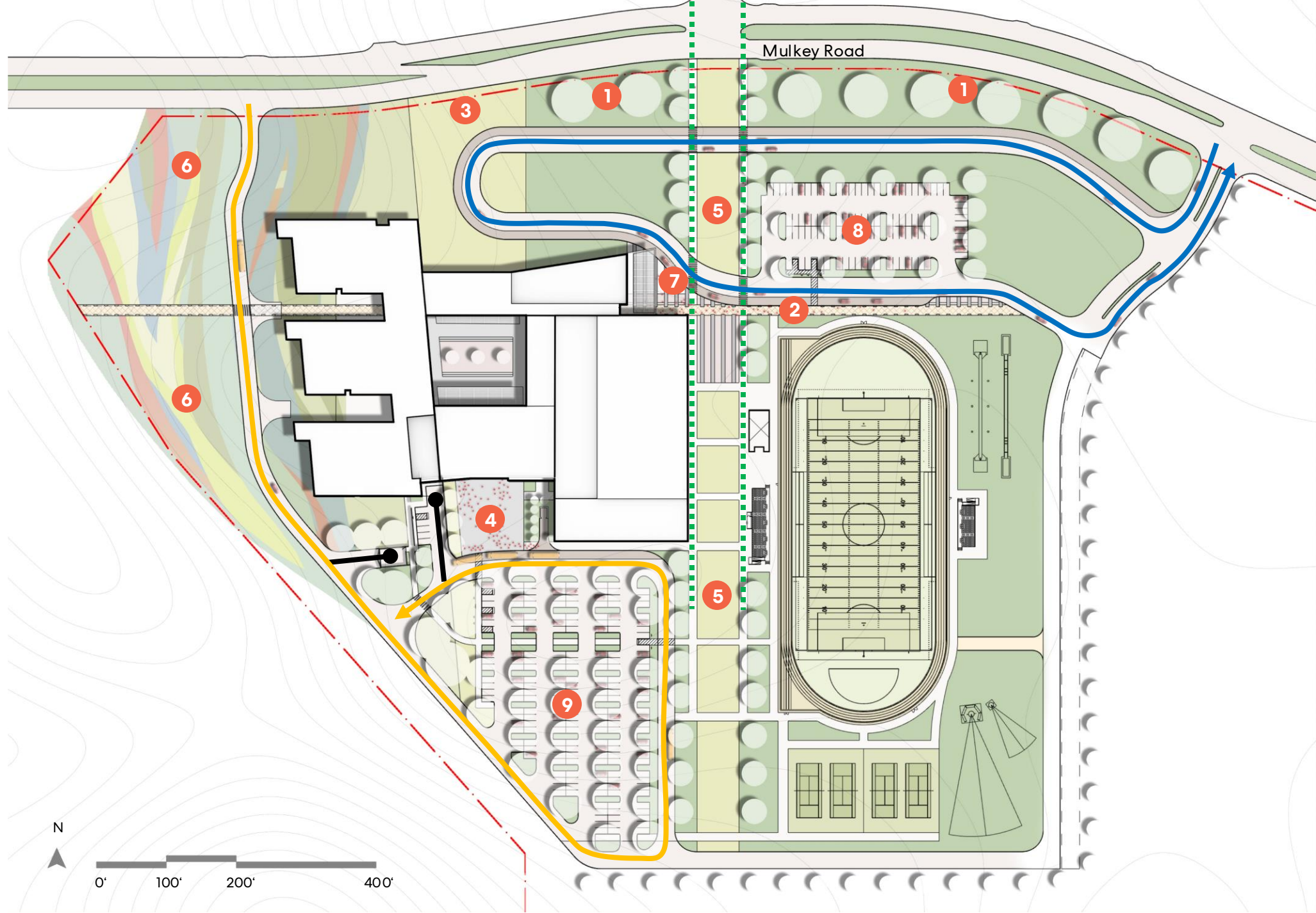


Site Plan

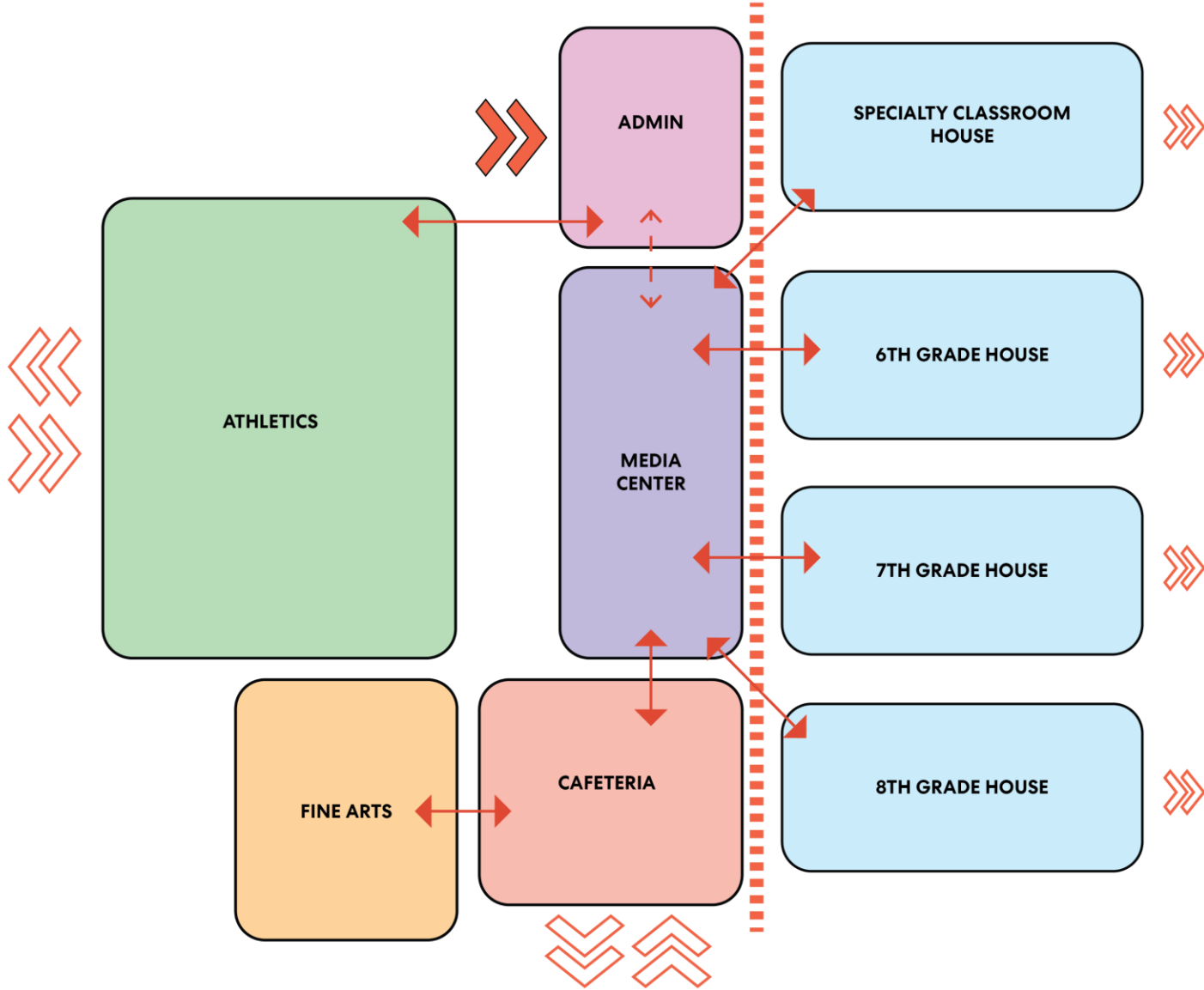
Site Area = 29.7 acres

1. Pecan Grove
2. Pedestrian Arrival
3. Blackland Prairie
4. Bus drop-off/Plaza
5. Community Lawn/Plaza
6. Butterfly Nature Preserve
7. Parent's drop-off Plaza
8. Visitors/Event Parking Spaces (98) (72)
9. Staff/Event Parking Spaces (203) (204)

- Service
- Parents / Staffs
- Bus/Visitors/Event
- Pedestrian



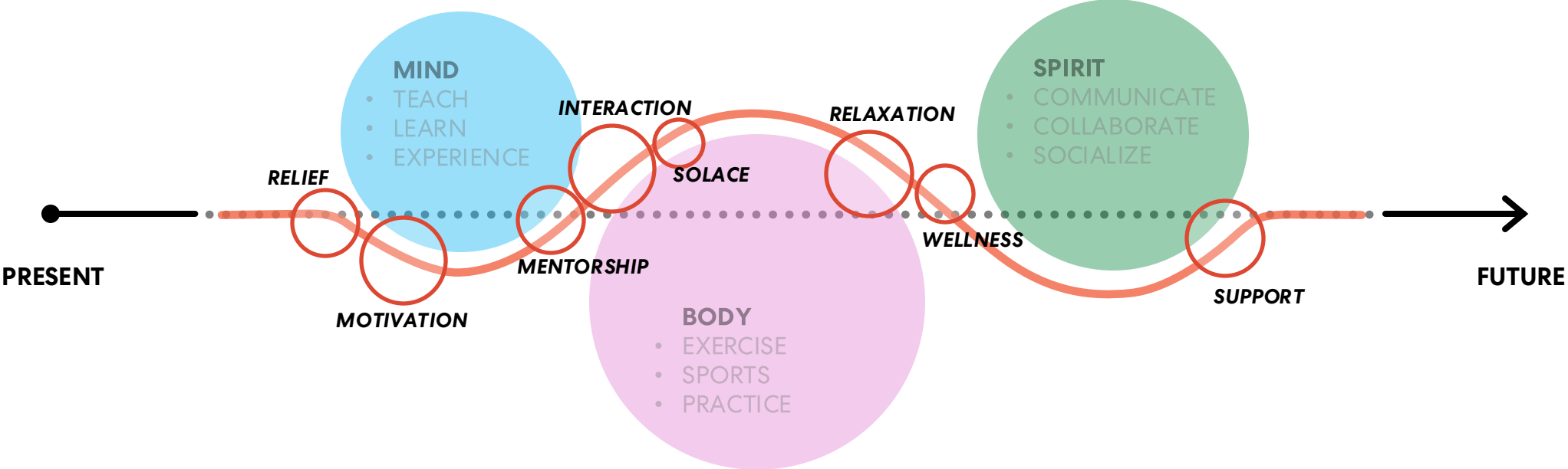
Adjacency Drivers



- ADJACENCY REQUIRED: Represented by a solid red double-headed vertical arrow.
- ADJACENCY PREFERRED: Represented by a dashed red double-headed vertical arrow.
- SECURE ENTRANCE: Represented by a solid red chevron pointing up.
- EXTERIOR ACCESS: Represented by an outlined red chevron pointing up.
- SECURE LOCKDOWN: Represented by a vertical dashed red line.

Design Strategy, Planning, and Interiors

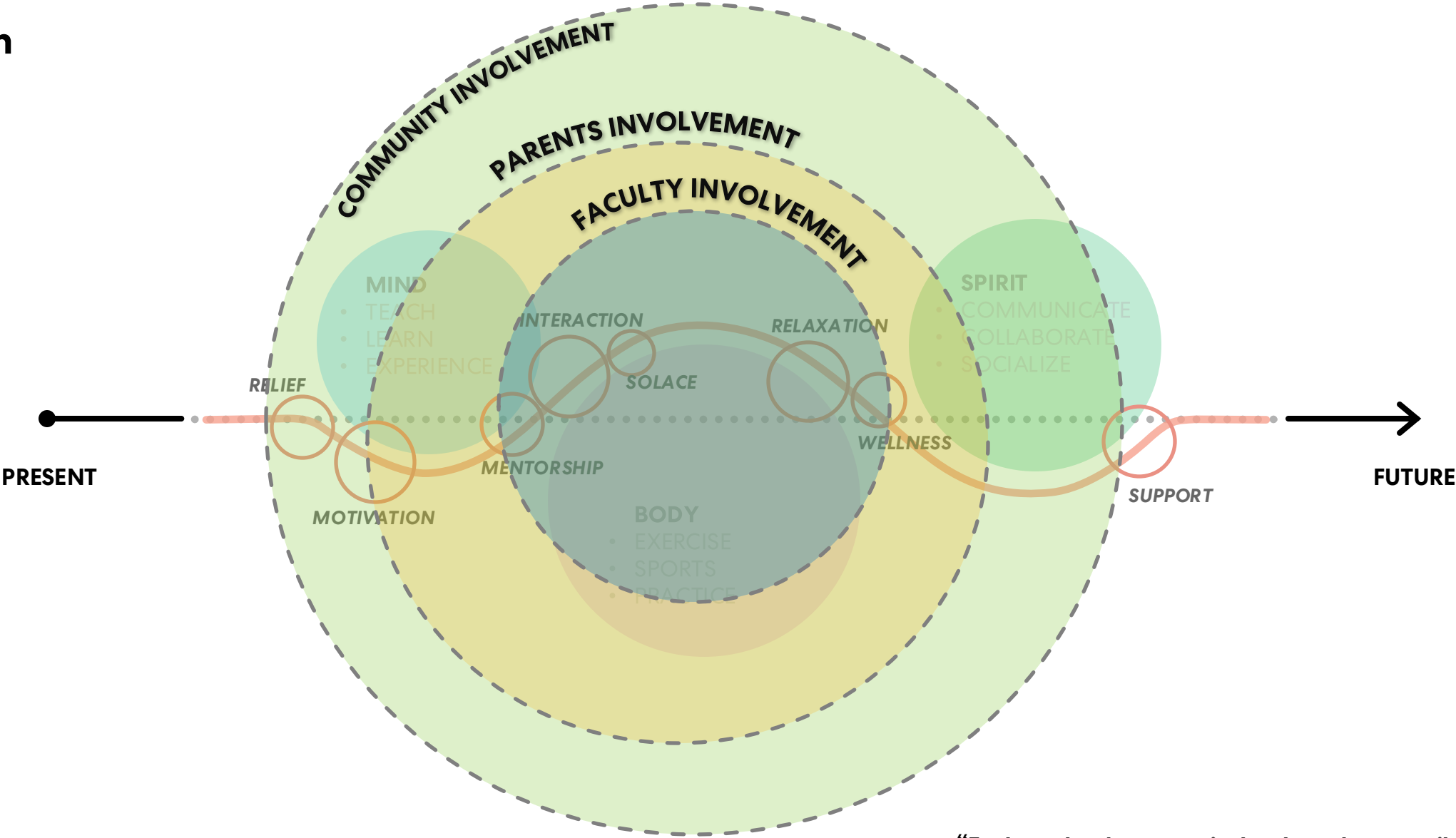
Design



“Learning is influenced by environment”

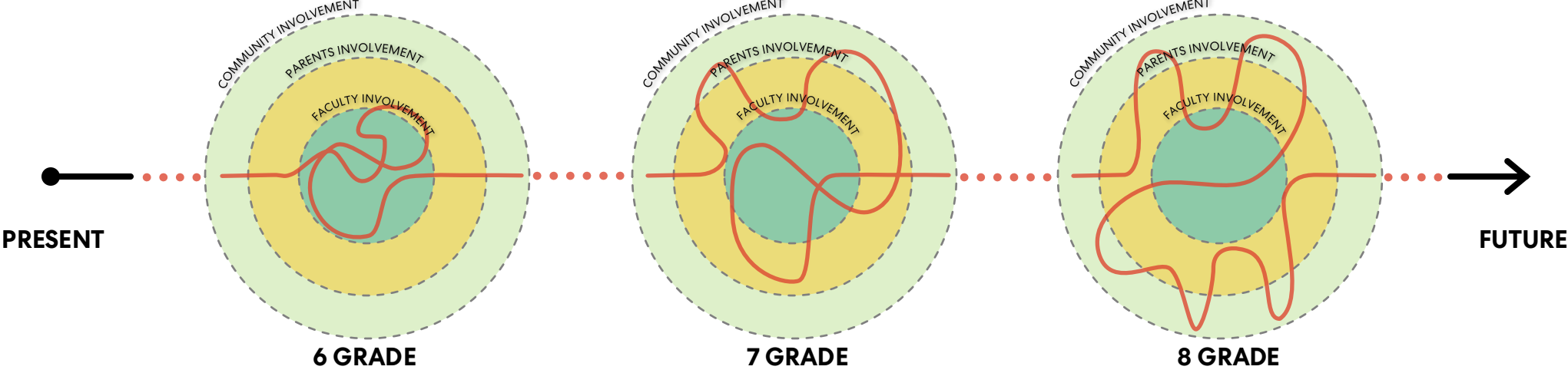
- NISD

Design



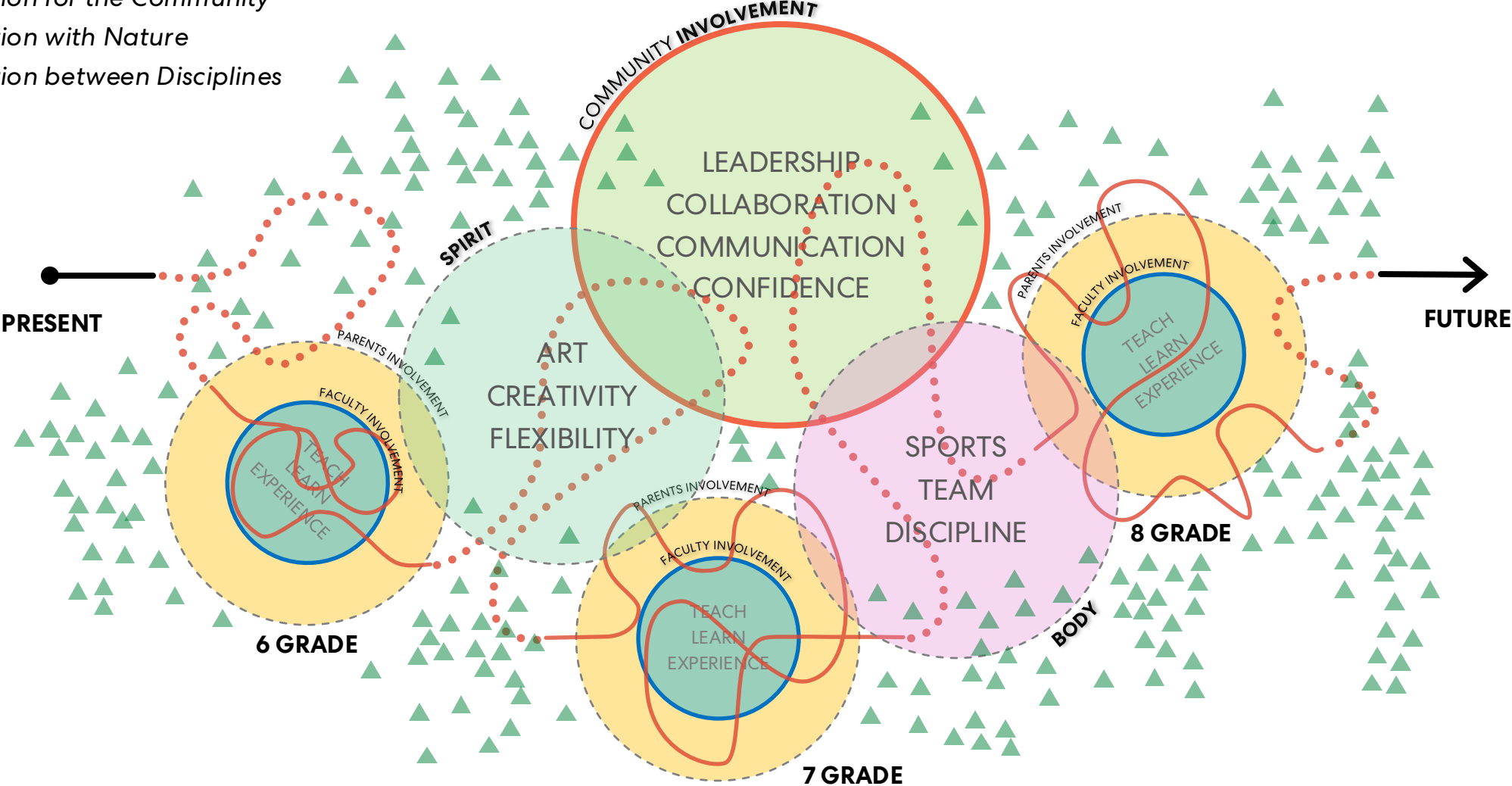
“Each student's success is the shared responsibility of students, families, schools, and communities.”
- NISD

Design



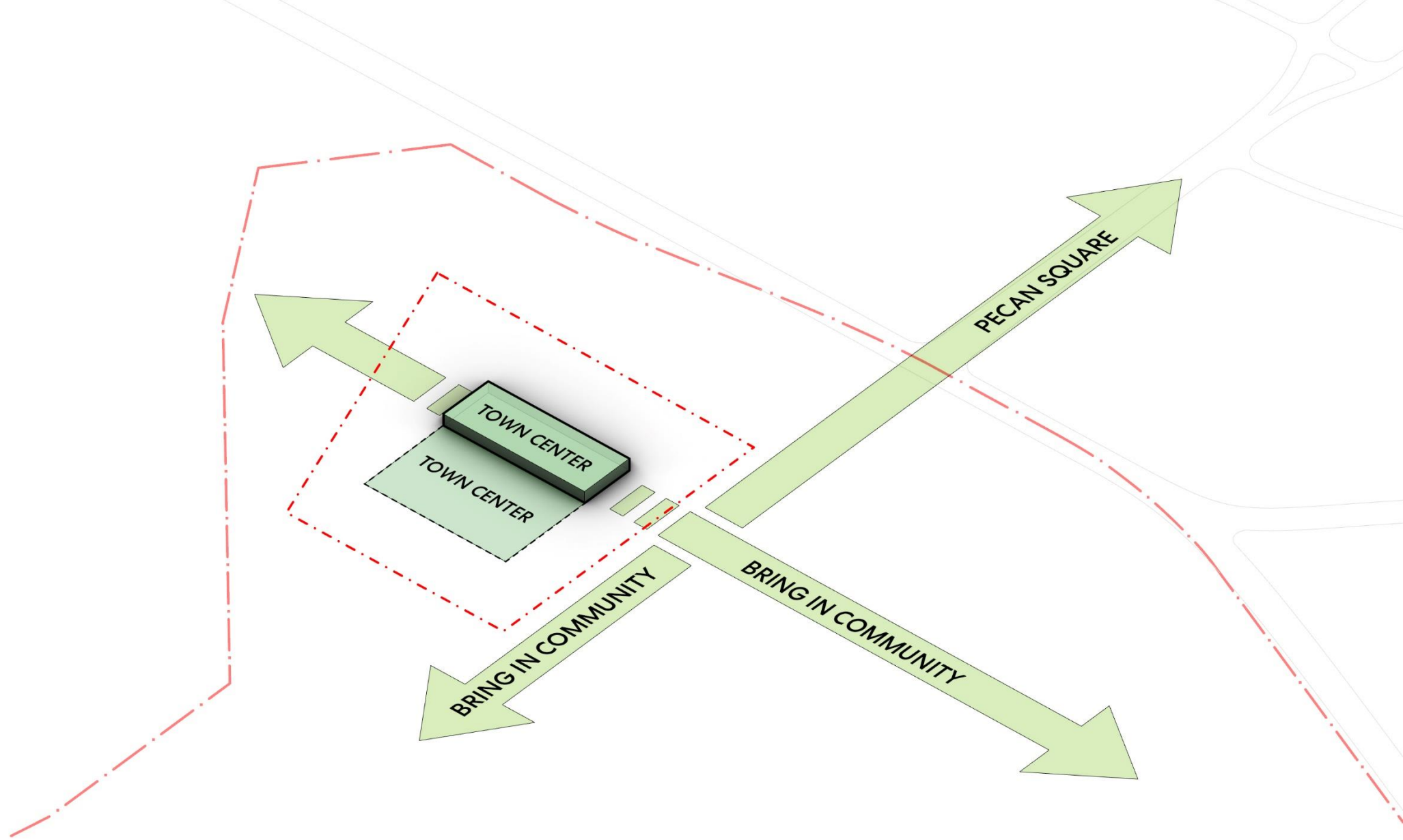
Connection

- A connection for the Community
- A connection with Nature
- A connection between Disciplines



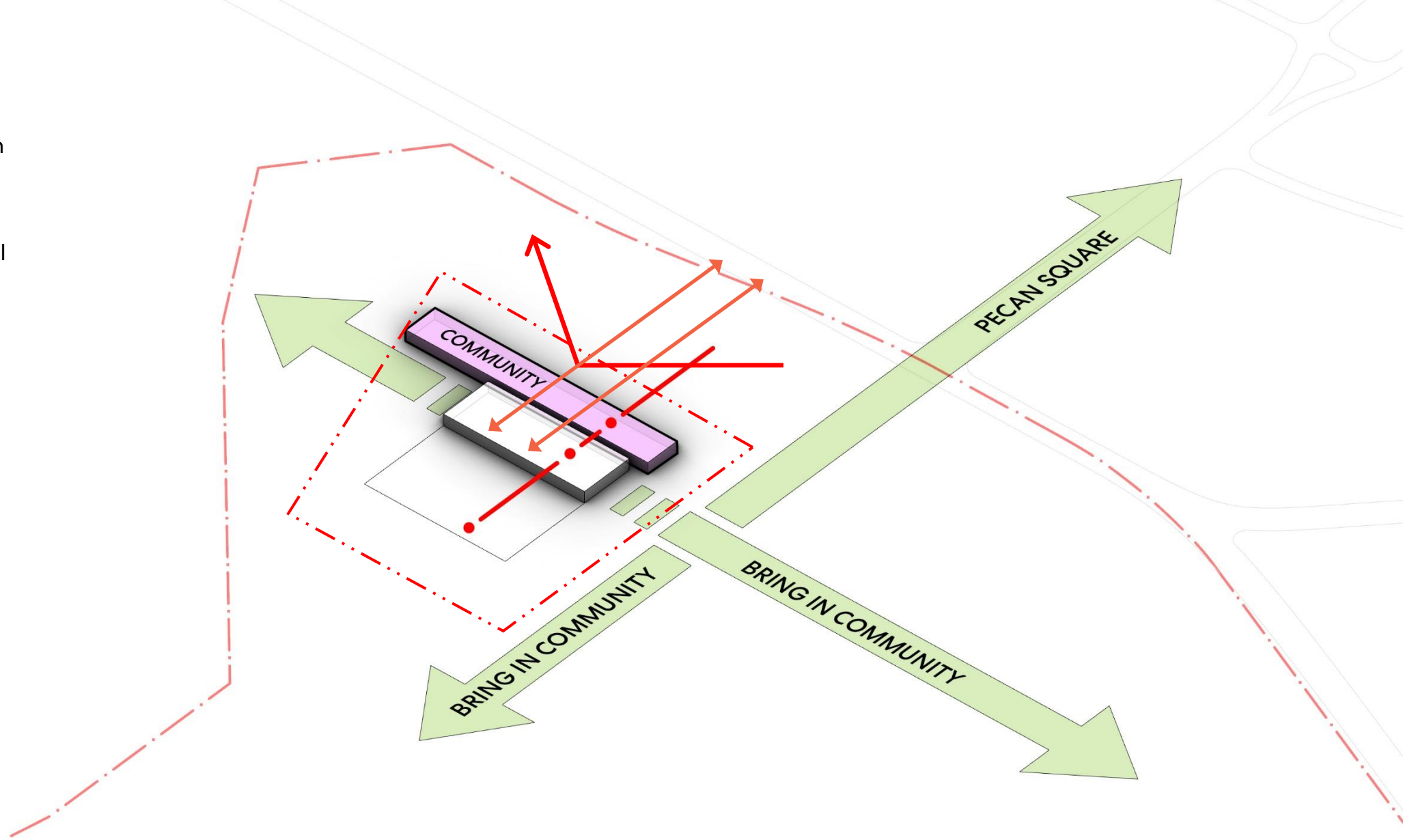
Strategy

- A Connection for the Community, An Academic Town Center
- A Connection between Academic and Athletics
- A Nexus of activities
- Maximize views as well as daylight



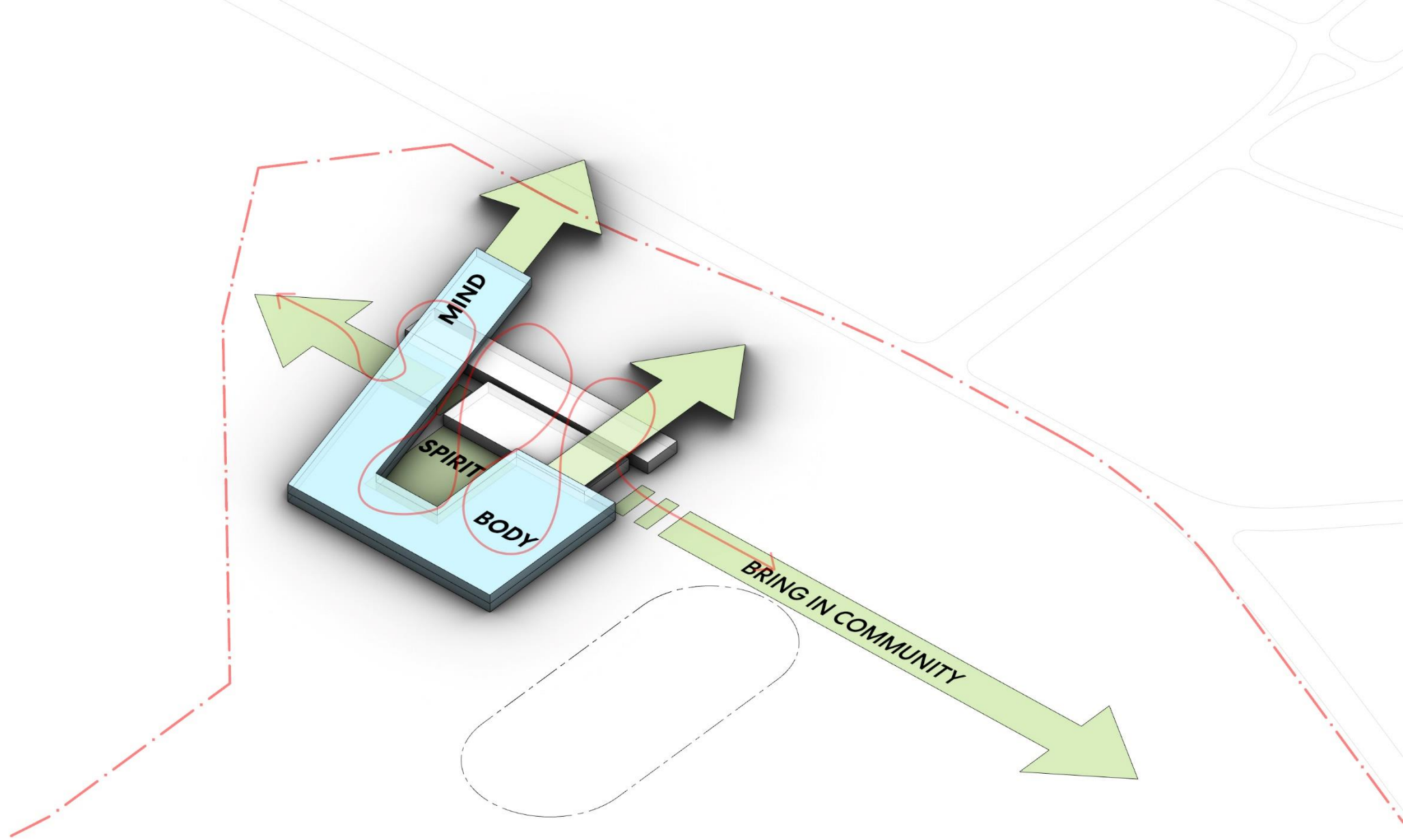
Strategy

- Transition zone between the Community and the School
- Transparency and Visual connection with the community



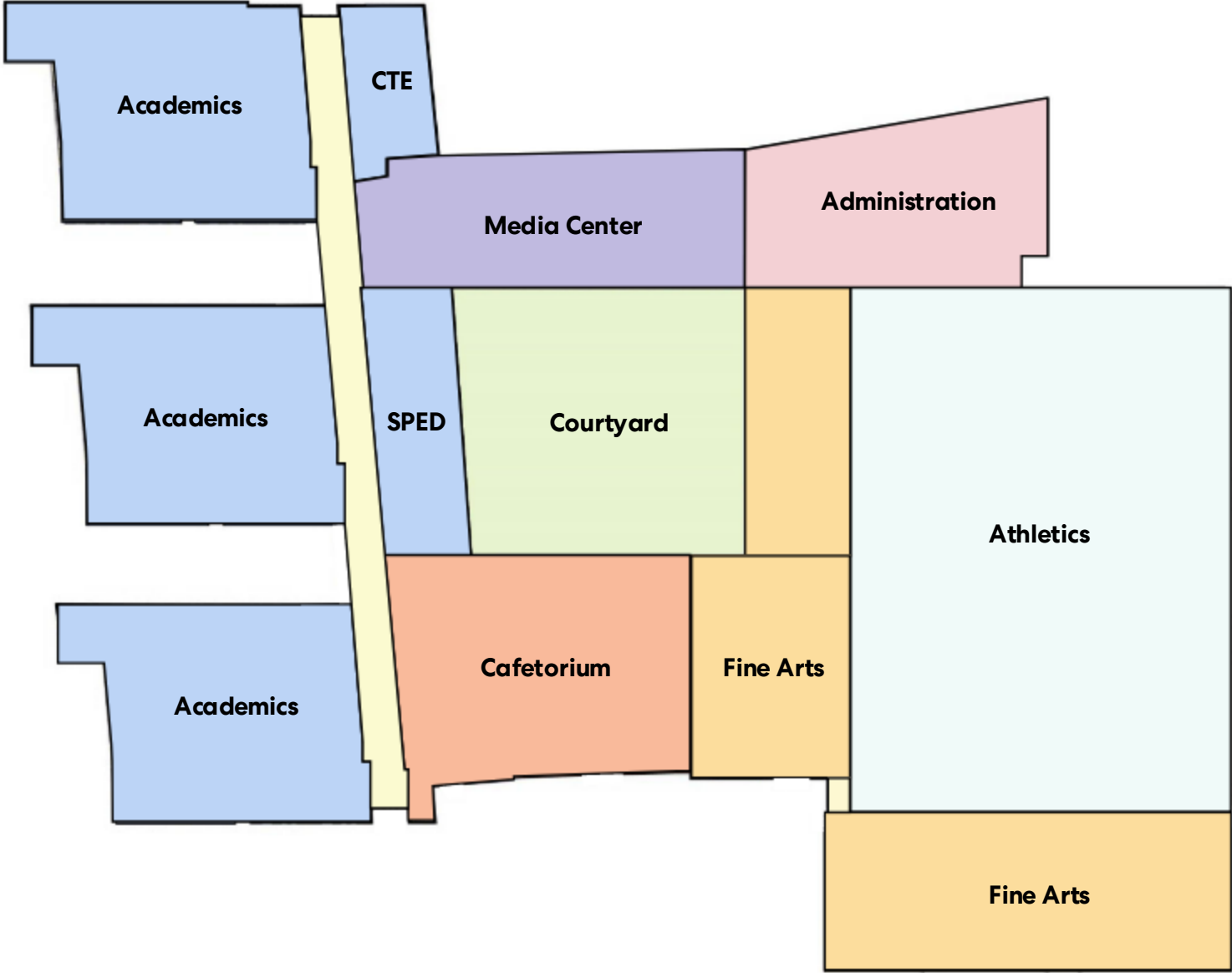
Strategy

- Singular, Compact and Fluid Academic Massing to establish Mind, Body and Spirit with clarity
- Massing to receive the Community as well as Reach out to the Community with a clear Identity



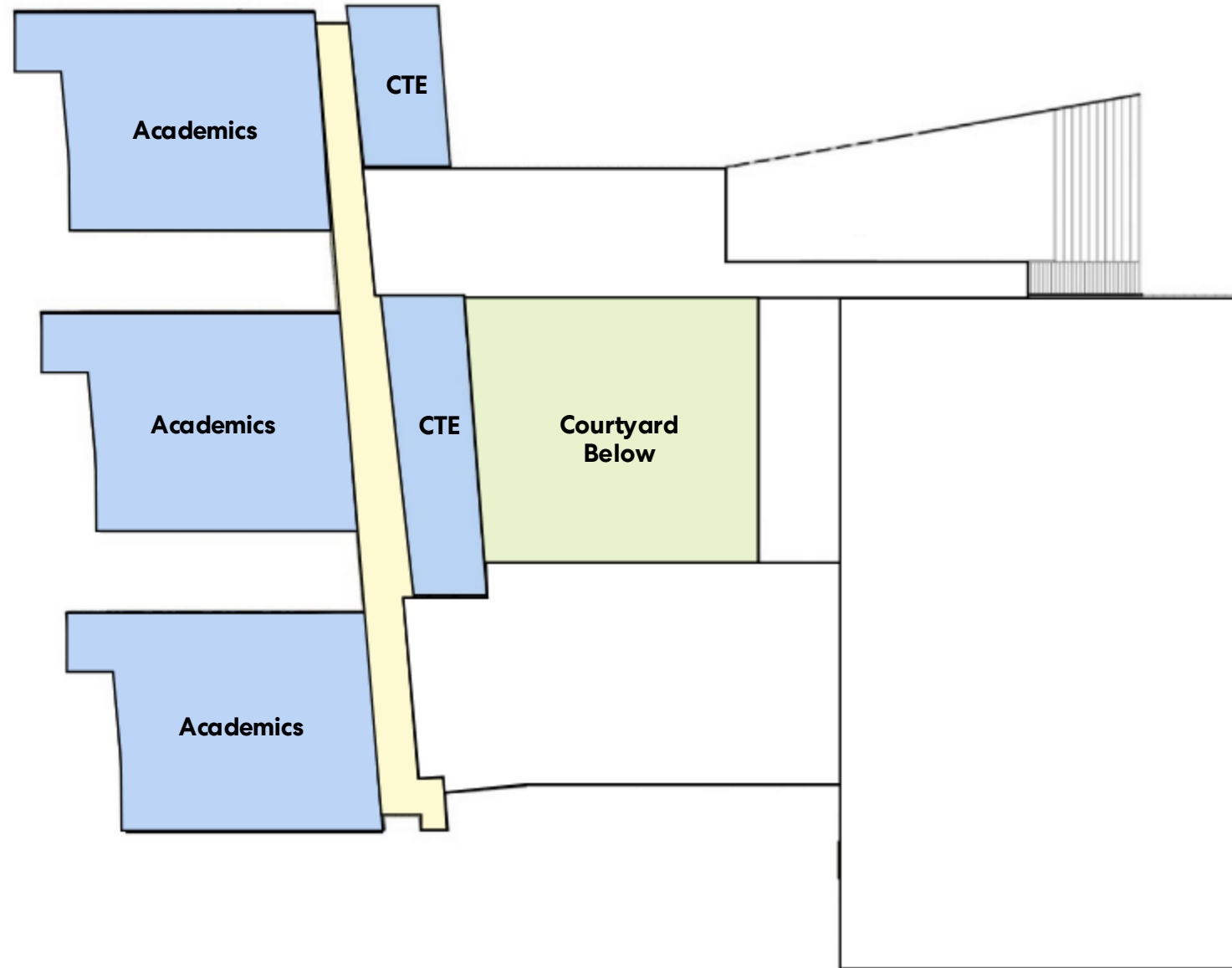
Planning

Level 01



Planning

Level 02



Materiality / Relation to Context

Black Land Prairie



Regional

Limestone



Grounded

Cross Timber



**Rhythm /
Warmth /
Scale**

Lake and Creek



**Ephemeral /
Transparency**

Flora / Fauna



**Color / Tone
Identity**

Texas Vernacular

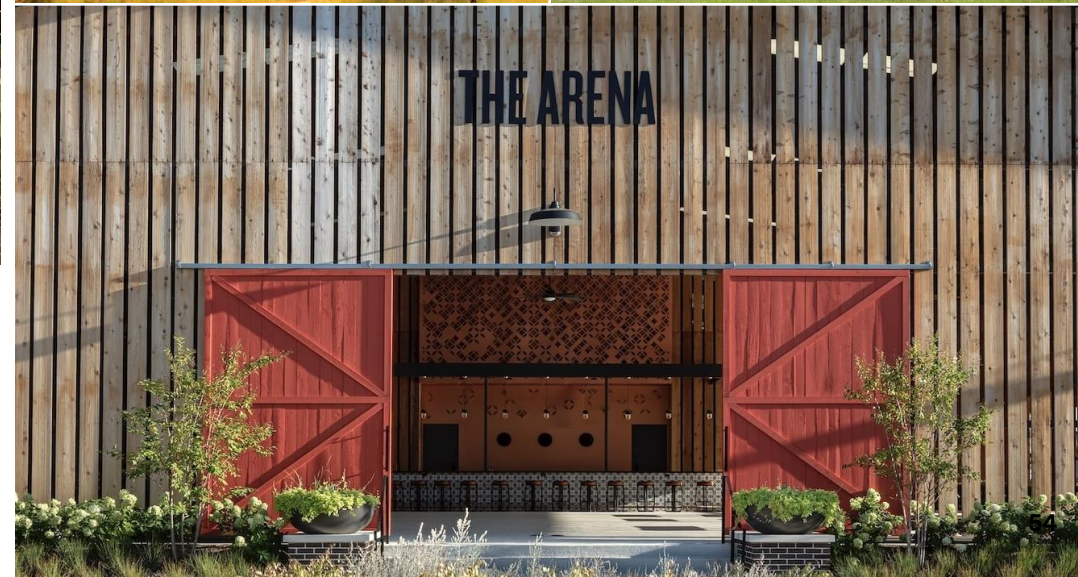


**Light / Shadow
Dynamic**

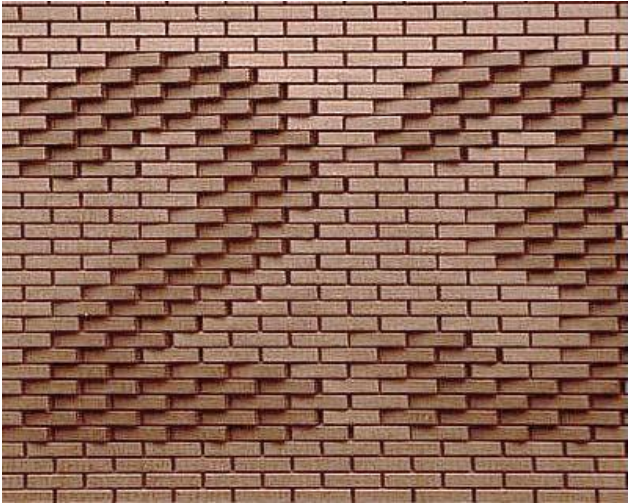
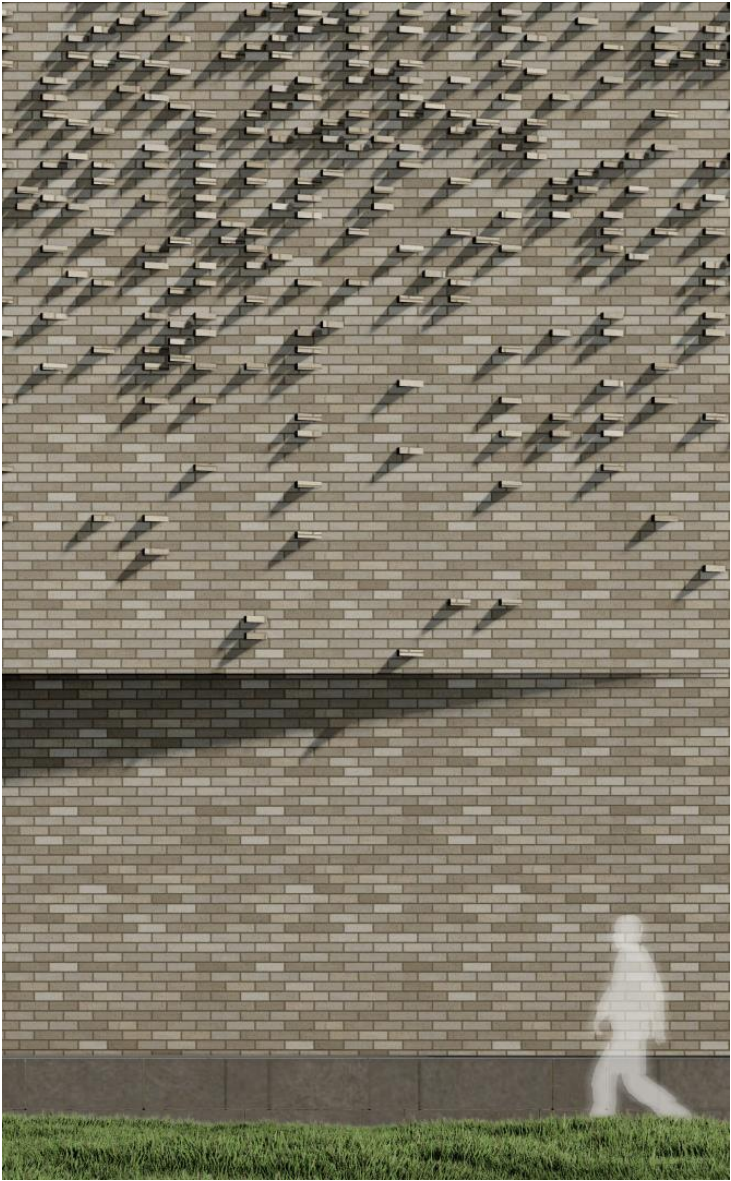
Relation to Context



- Vertical Rhythm / Processional
- Lightness / Transparency
- Human Scale
- Light / Shadow
- Materiality (Wood Interior, Weathered Exterior, Metal, Masonry)



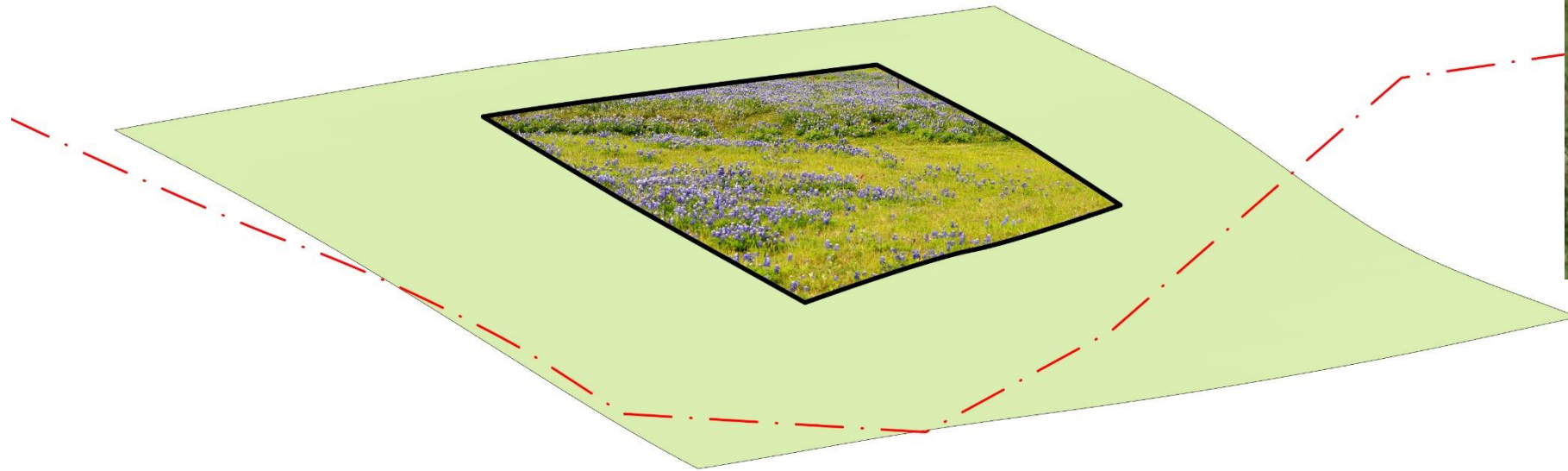
Relation to Context



- Rhythm
- Light/Shadow dynamic
- Individuality/Personality

Materiality

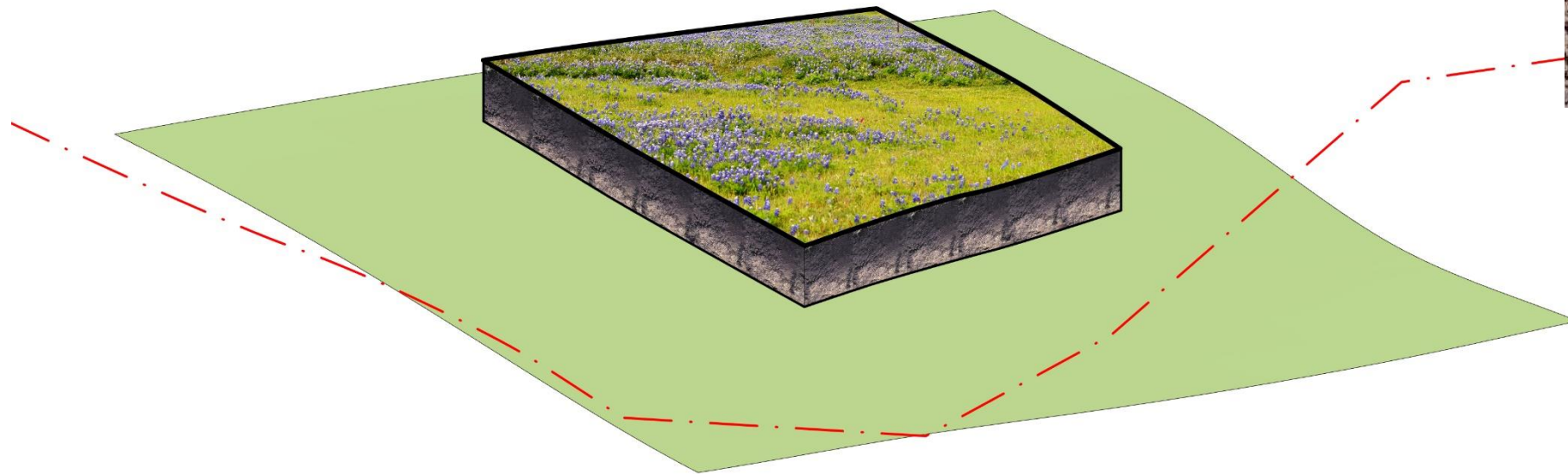
Envelope Diagram



Blackland Prairie

Materiality

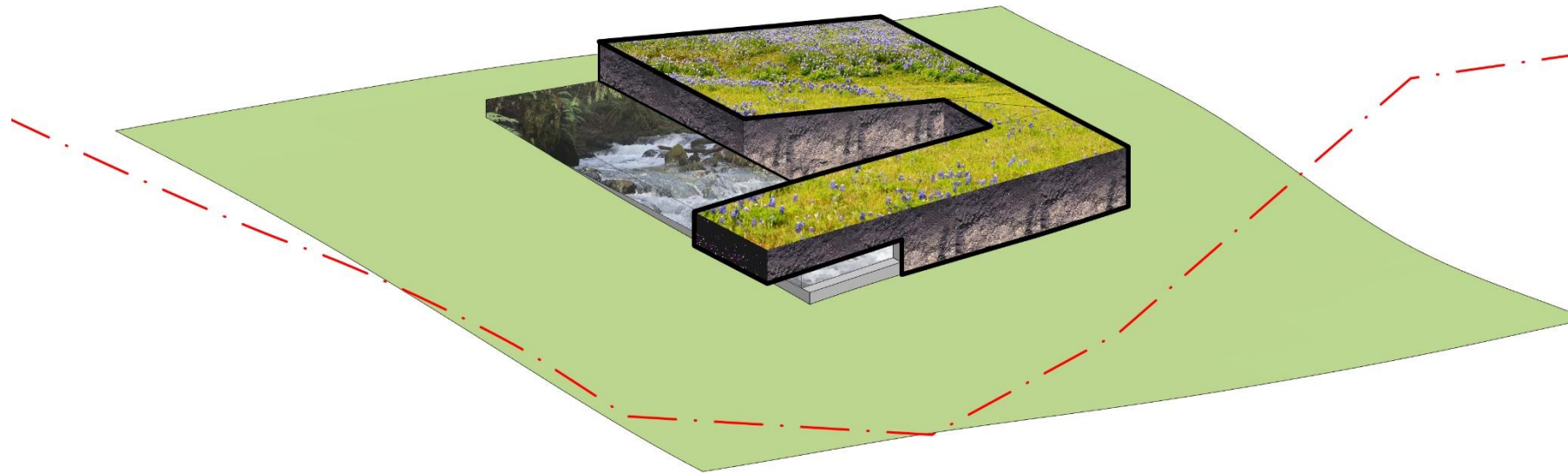
Envelope Diagram



Extrude & exposing gradient of the
Blackland Prairie's dark soil

Materiality

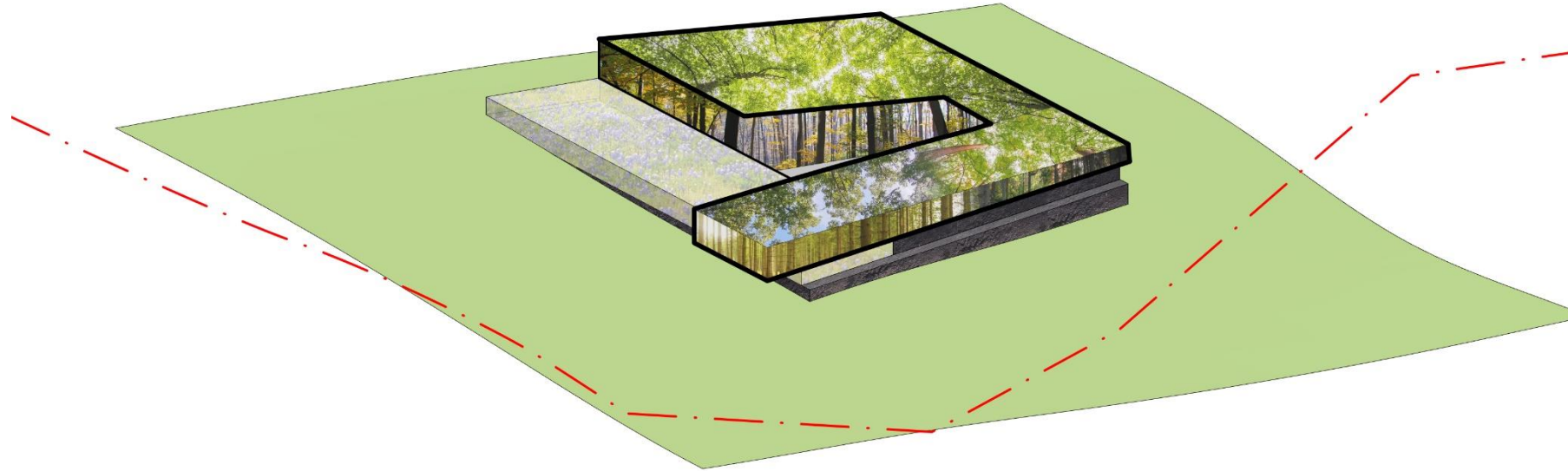
Envelope Diagram



Creek/water carves and shapes the extrusion

Materiality

Envelope Diagram



Sky, Light, Tree Canopy, Pattern - The Ephemeral
Blackland Prairie - Base



Massing/Envelope/Materiality

Aerial View



Massing/Envelope/Materiality

NW Eye Level View



Massing/Envelope/Materiality

West View



Massing/Envelope/Materiality

SW Eye Level View



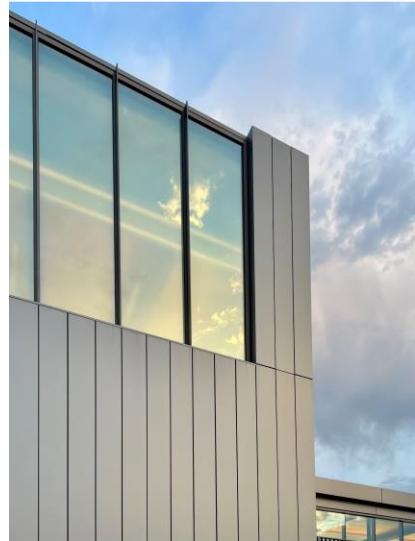
Massing/Envelope/Materiality

Eye Level Arrival Plaza View (with proposed school signage location)



Massing/Envelope/Materiality

Eye Level Main Entry Plaza/Porch View



Massing/Envelope/Materiality

NW Aerial View



Design Strategy, Planning, and Interiors

Material Representation – Interior Experience

Grounded | Honest

Textured | Layered

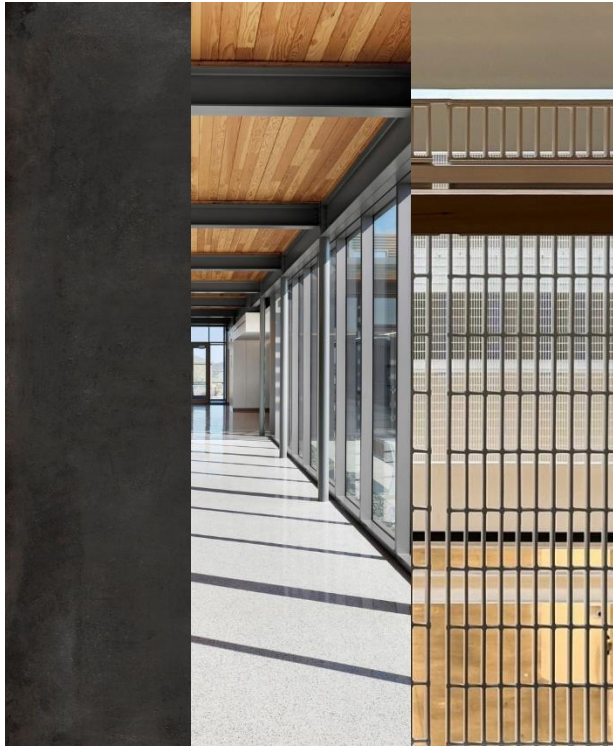
Movement | Rhythm

Light | Reflective

Color | Tone



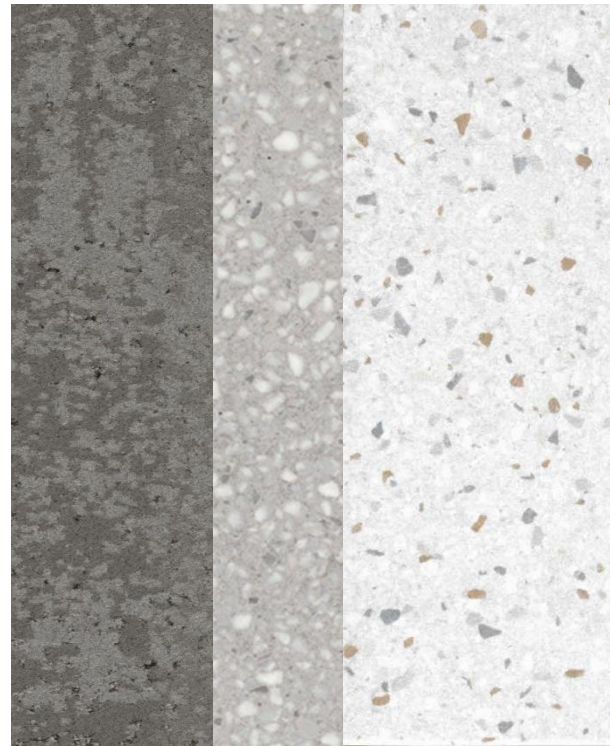
Wood



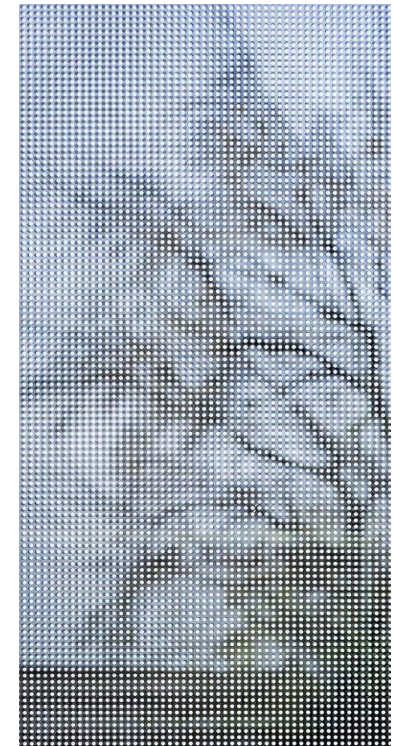
Metal



Stone | Tile



Carpet | Resilient | Terrazzo



Glass | Film



Textiles

Student Agency



FLEXIBLE AND DYNAMIC



ACTIVE ENGAGEMENT

Innovation



ORGANIZATION AND LEARNING STYLES



LEARNING ON DISPLAY



MULTI-FUNCTIONAL & NON-TRADITIONAL

Creating Discovery



VISUALS & MESSAGING



COLOR & RESPITE

Wellness & Wellbeing



VIEWS

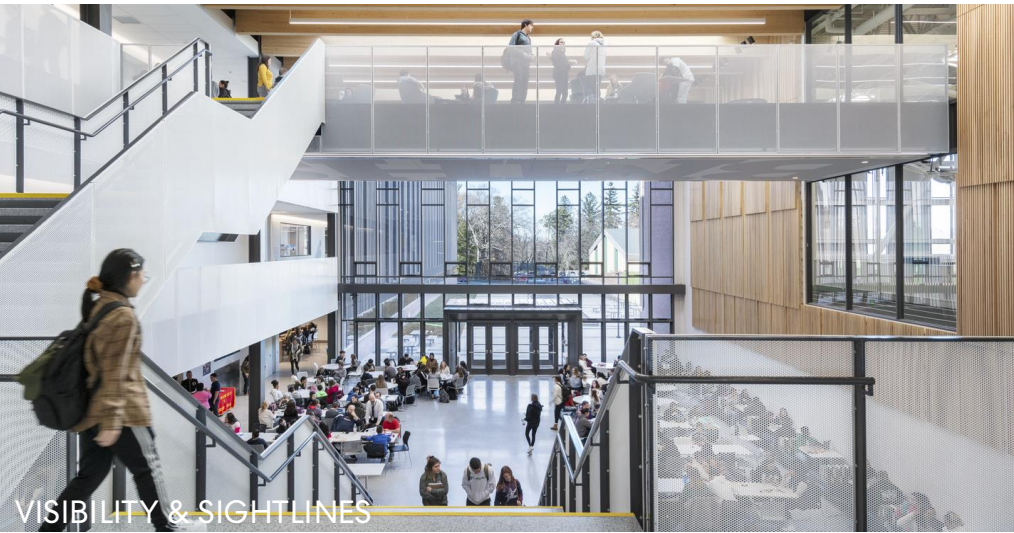


LIGHT



MATERIALS

Multi-use Space



Honest Materials



CONNECTION TO NATURE



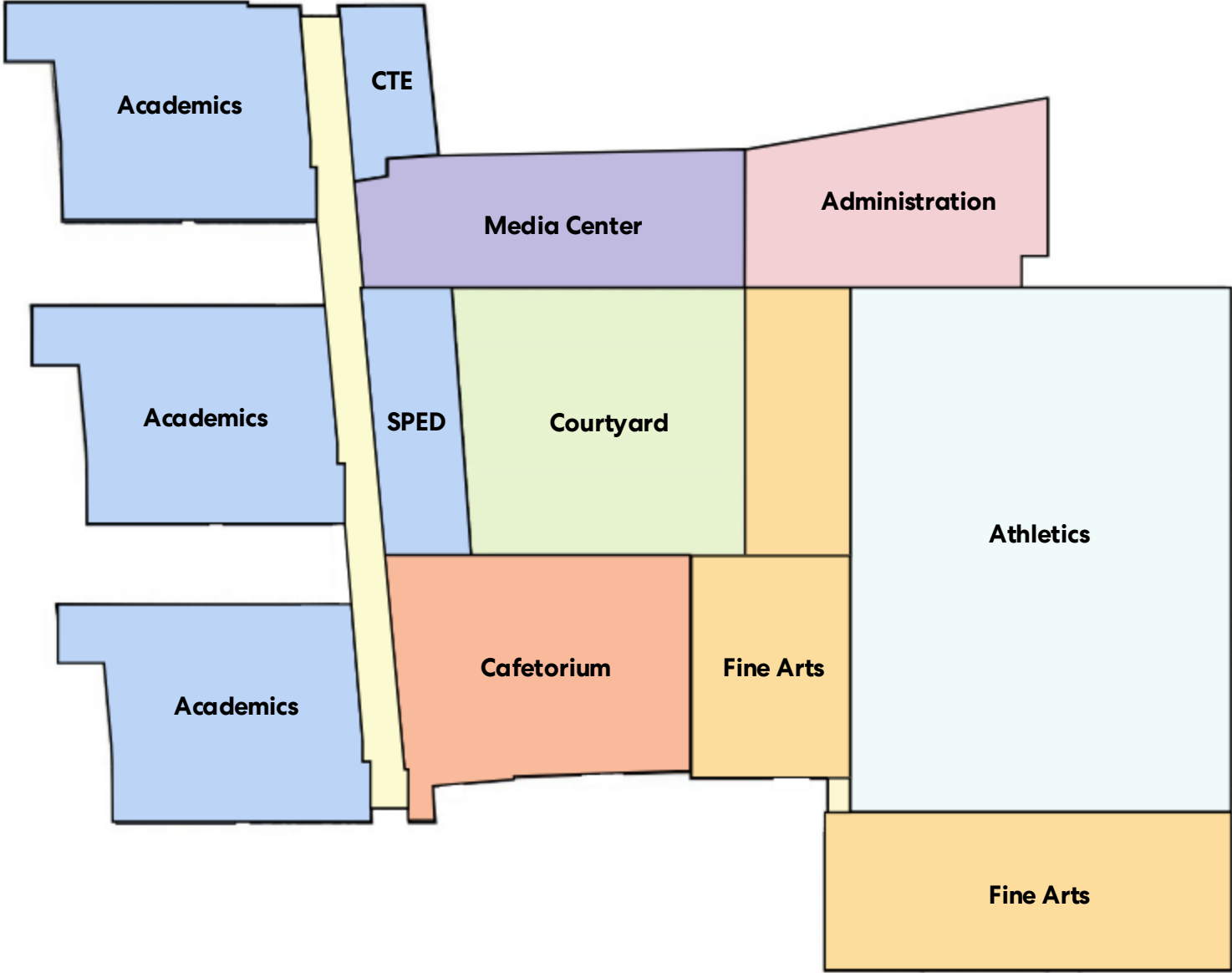
TECTONIC



NATURAL PATTERNS

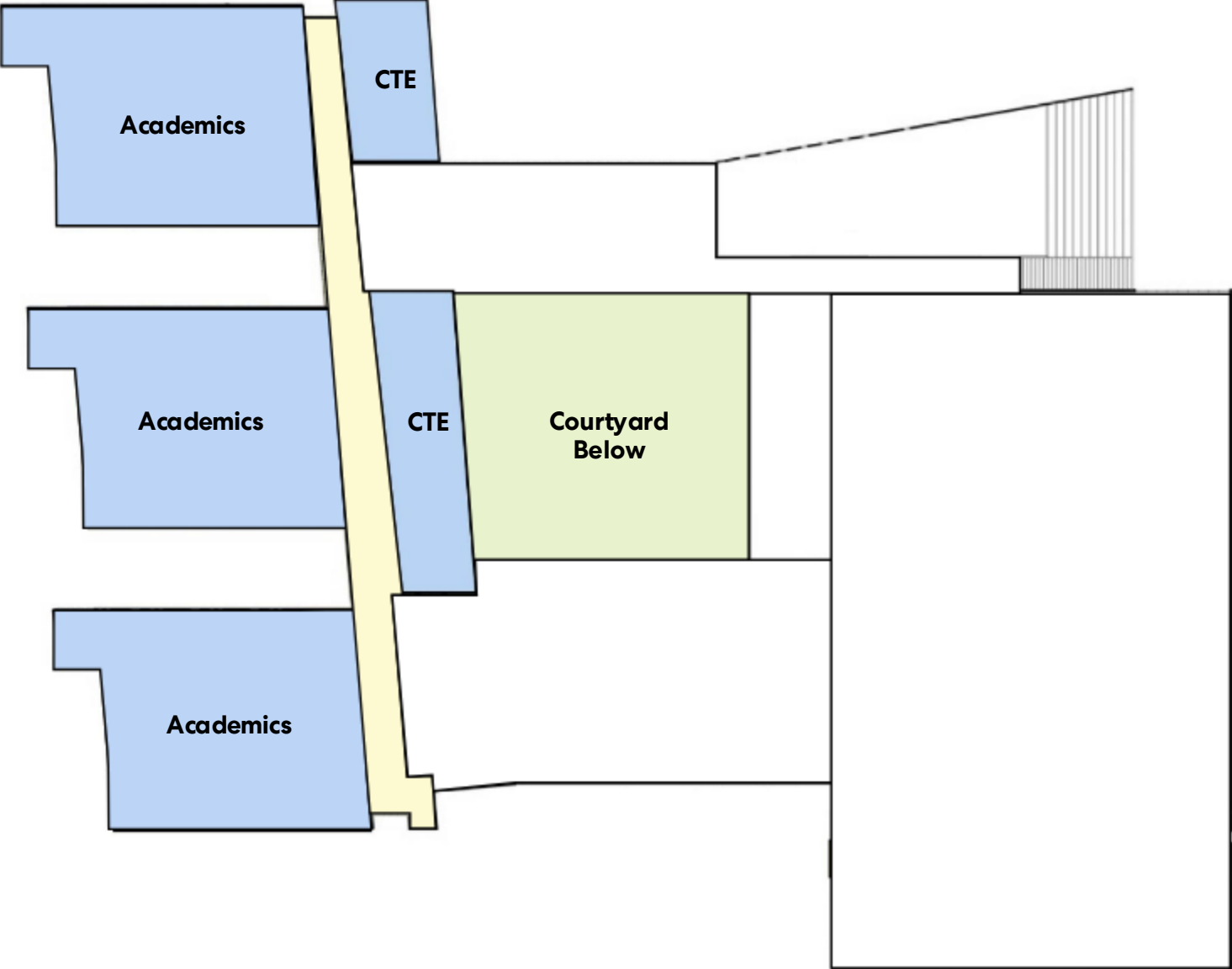
Planning

Level 01

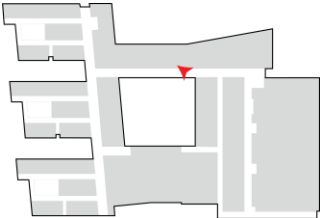


Planning

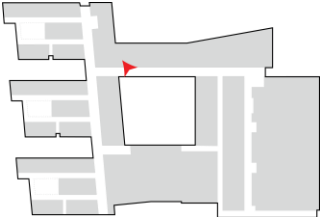
Level 02



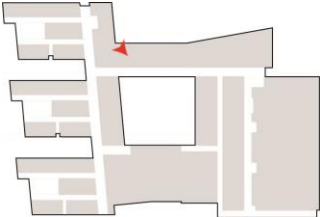
Media Center



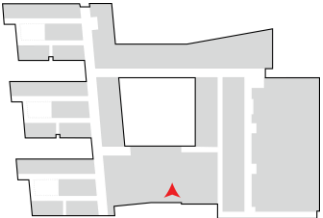
Media Center



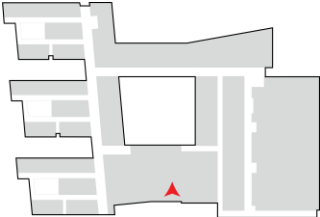
Media Center



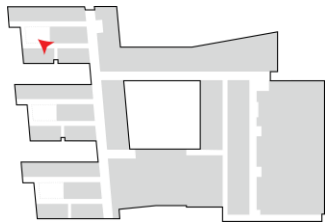
Cafetorium



Cafetorium



Academic House



Specific Overview of CTE / Career Readiness and Special Education

Kids Come FIRST



Social - Emotional Learning

NISD Vision for Social-Emotional Learning

Northwest ISD schools will create an intentional, nurturing, and caring culture that engages all stakeholders in a comprehensive and integrated approach to developing the whole child as we work collectively to ensure our students are socially, emotionally, and intellectually prepared for college, the global workplace, and personal success.



**Social
Emotional
Learning
Framework**

A4LE Southern Region Conference



Northwest Independent School District CTE: Get Real.

At Northwest ISD CTE, we believe every student should get real: real academics, real skills, and a real high school experience unlike any other. By combining strong academics with robust career-minded education, we expand students' options and opportunities to make them truly future ready.

Perkins&Will

Career and Technical Education

OPPORTUNITY GUIDE

2024 - 2025



nisdtx.org/cte

Northwest
INDEPENDENT SCHOOL DISTRICT

A4LE Southern Region Conference



NISD CTE Programs

Family and Community Services - Public Service Endorsement	
Route 1	
9th Grade	Principles of Human Services (1 credit)
10th Grade	Family and Community Services (1 credit)
11th Grade	Counseling and Mental Health (1 credit)
12th Grade	Practicum in Human Services (2 credits)
Route 2	
7th Grade	Lifetime Nutrition Wellness (.5 credit) / Interpersonal Studies (.5 credit)
8th Grade	Principles of Human Services (1 credit)
9th Grade	Family and Community Services (1 credit)
10th Grade	Counseling and Mental Health (1 credit)
11th Grade	Practicum in Human Services (2 credits)
12th Grade	Extended Practicum in Human Services (3 credits)

Example of one pathway students can follow beginning in 7th grade.

Perkins&Will

CTE Career Clusters

Agriculture, Food, and Natural Resources

Architecture and Construction

Arts, Audio/Video Technology and

Communications

Business, Marketing, and Finance

Education and Training

Engineering

Health Science

Hospitality and Tourism

Human Services

Information Technology

Manufacturing

Transportation, Distribution, and Logistics

A4LE Southern Region Conference



NISD Middle School CTE Program Overview

- NISD Middle School CTE Programs (7 campuses): 6,132 students
- Projected Floyd Barksdale enrollment for CTE: 1,000 students
- CTE programs pipeline into middle schools to give students opportunities for skills and starting HS credits early in their secondary
- Career readiness course (LEAP) guides students through career exploration & professional speaking



Scan for detailed course
info and overview videos.



Perkins&Will

ASPIRE. ADVANCE. ACHIEVE

6th Grade CTE Course

- Intro to Technology Applications

7th Grade CTE Course

- Lifetime Nutrition & Wellness
- Personal Development & Relationships

7th & 8th Grade CTE Course

- Digital Communications
- Fundamentals of Computer Science
- Principles of Applied Engineering
- Medical Technology
- Robotics 1
- Technology Applications

8th Grade CTE Course

- Digital Art & Animation
- Principles of Human Services
- *LEAP (Leadership, Employability, and Professional Skills)

**required*

Design Background in Construction

A4LE Southern Region Conference

Where we are now



Perkins&Will

Northwest
INDEPENDENT SCHOOL DISTRICT

Questions?



A4LE Southern Region Conference

Meet the Speakers



Tommy Osborne, AIA, LEED AP
Executive Director of Construction
Northwest ISD

thomas.osborne@nisdtx.org



Casey Helmick
Director of Planning
Northwest ISD

chelmick@nisdtx.org



**Barbara Rystrom, AIA, NCARB,
LEED AP BD+C**
Sr. Project Manager, Associate
Perkins&Will

barbara.rystrom@perkinswill.com



**Bob Davis, AIA,
LEED Green Associate, WELL AP**
Senior Architect, Associate
Perkins&Will

bob.davis@perkinswill.com



**Maggie Graham, AIA,
LEED Green Associate, WELL AP**
Project Architect, Associate
Perkins&Will

maggie.graham@perkinswill.com