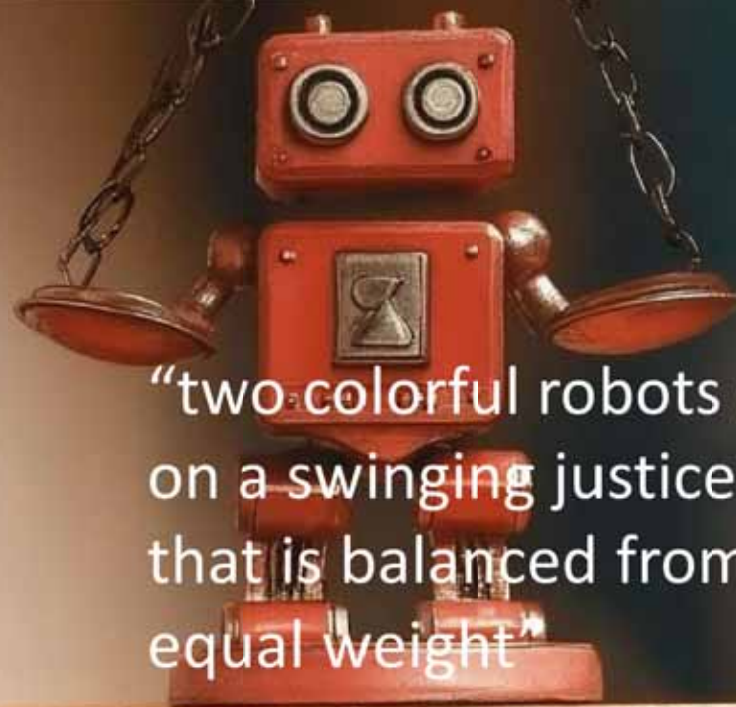
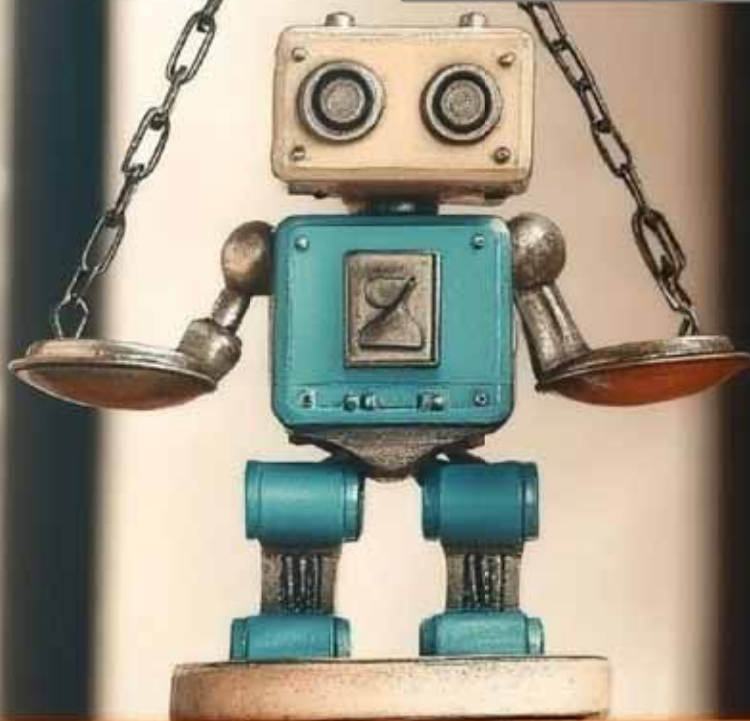


# AI-4LE

## AI for Learning Environment



“two colorful robots sitting on a swinging justice scale that is balanced from their equal weight”

As AI becomes a mainstay in all facets of our lives, this session will explore the ethics, legality, and uses of multiple AI tools available to aid in the design of learning environments. Learn how a monkey selfie has shaped AI law and why robots hallucinate. After an overview of the rapid evolution of AI, this session will dive into a series of AI tools available to aid architects from the initial visioning process, through community engagement, and into design. A series of case studies will show how AI platforms including ChatGPT, Gemini, Notebook, Archsynth, Midjourney, Firefly and others have been used to supplement the design and research process.

### **Learning Objectives:**

Have a fundamental understanding of the ethical and legal implications of using AI.

Learn about the capabilities and limitations of various AI tools available to architects.

Develop a critical understanding of AI's role in the design process, including the potential benefits and risks, such as biases, hallucinations, and the need for human oversight.

Gain practical knowledge on how to effectively utilize AI tools within an architectural design workflow.

# WHO WE ARE



**FRANCIS WILMORE**  
AIA, LEED AP BD+C  
Principal, Director of Design



# ABOUT **KKT ARCHITECTS**

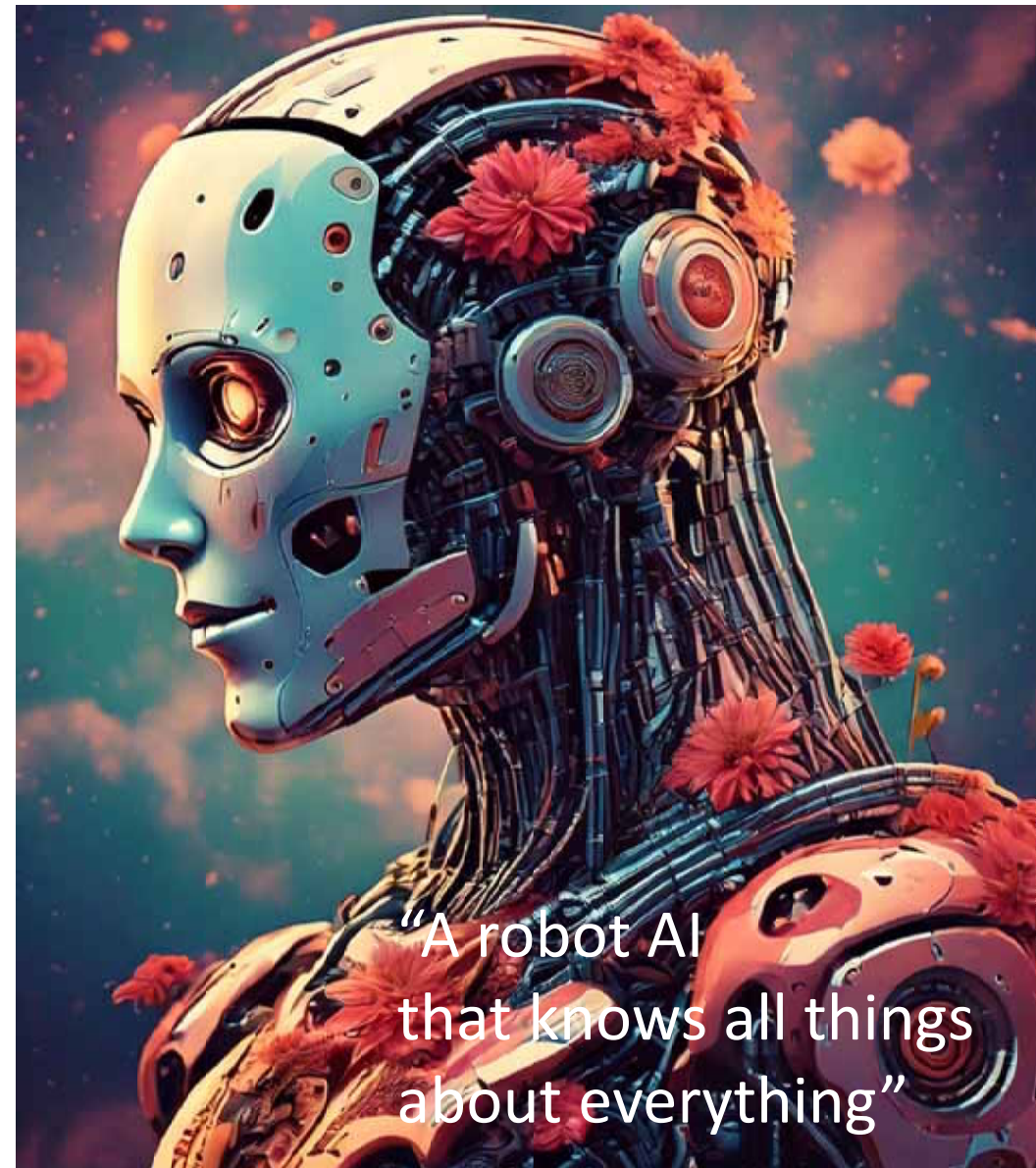
- **450** Average Projects per Year
- **Offices** in Tulsa & Oklahoma City

## **LOCAL BY DESIGN**

We are passionate about creating spaces that improve lives & enrich communities.







Thrill vs. Excess



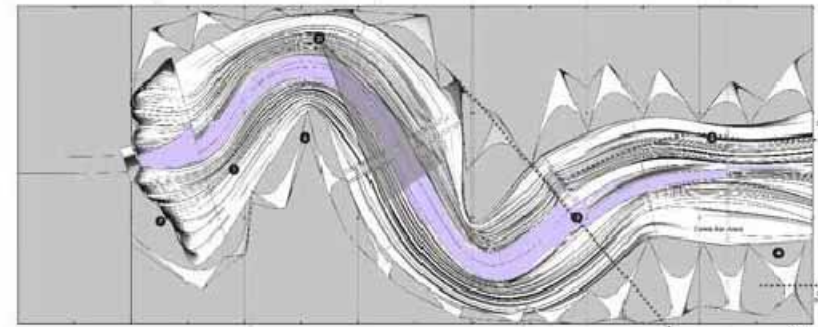
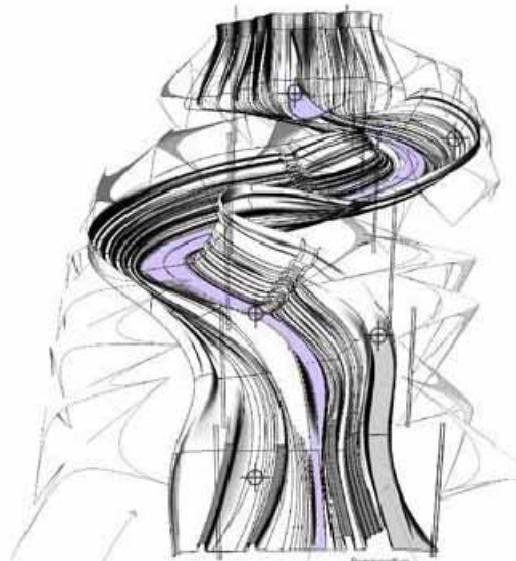
Active vs Passive Engagement



Social Unity vs. Social Divide



The Spring Collection



- Detail of the building structure
- Detail of the building structure
- Detail of the building structure
- Detail of the building structure
- Detail of the building structure
- Detail of the building structure
- Detail of the building structure



Haute Couture to prêt-à-porter



What should

- What should - Google Search
- what should **i** draw
- what should **i** make for dinner
- what should **i** do
- what should **i** eat
- what should a cover **letter** include
- what should **i** watch
- what should **i** major in
- what should **i** read next
- what should your **blood** sugar be



Chat



**PayPal Virtual Agent** 11:38 AM

Hi! I'm PayPal's virtual agent. To get started, simply ask me a question.

I am still learning, so if I can't help you, I'll direct you to additional resources.



**Leah Moreno** 11:39 AM

I was scammed.



**PayPal Virtual Agent** 11:39 AM

I found some articles in our Help Center that might help you. Check them out! If you need more help, please type "need more help".

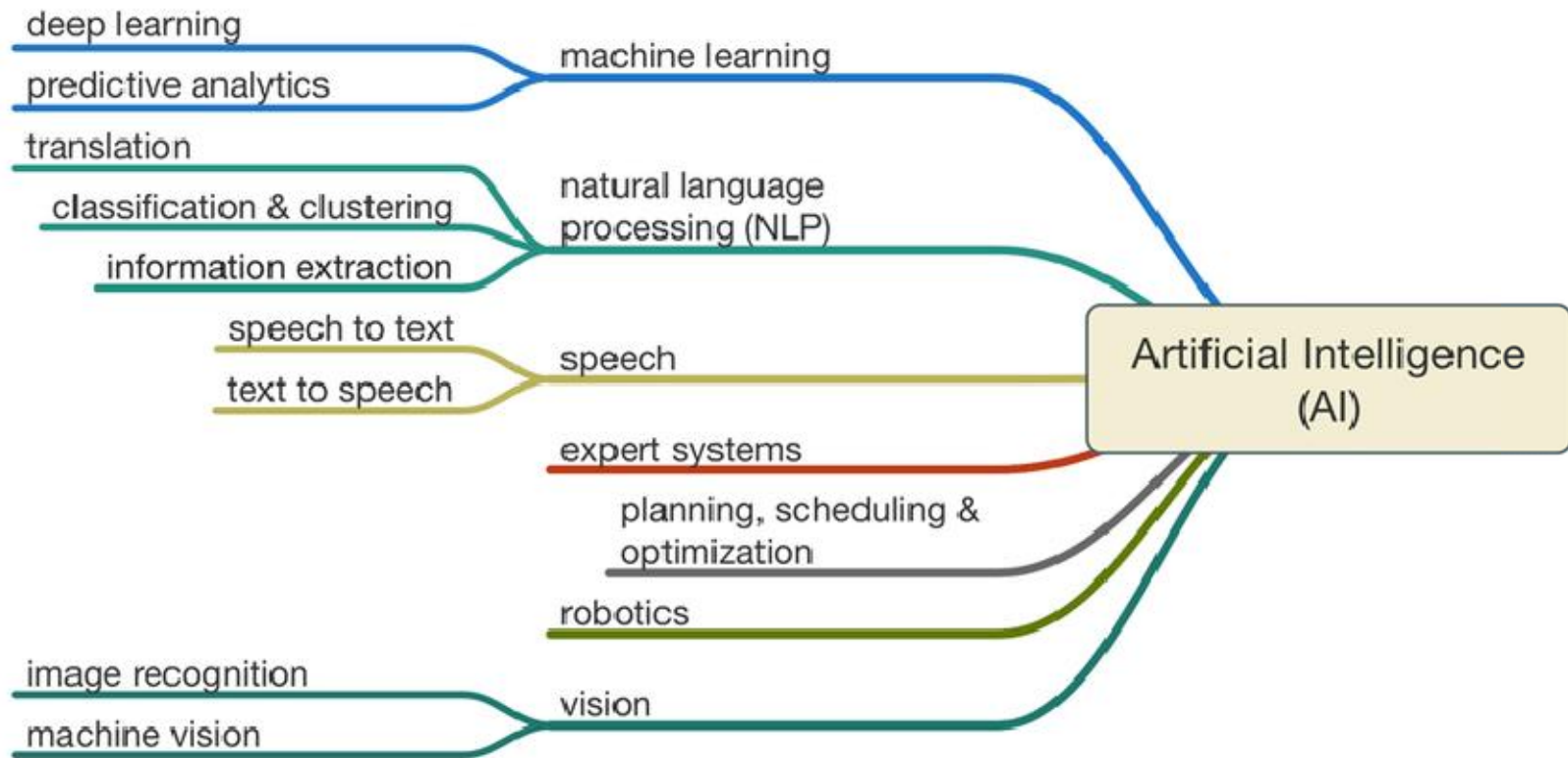
- [When will my Samsung Pay account automatically top up?](#)
- [How can I withdraw money left over from a Samsung Pay transaction?](#)
- [How do I change how much comes out each time my Samsung Pay account automatically tops up?](#)

Type your question here



“an old time honky-tonk singer”

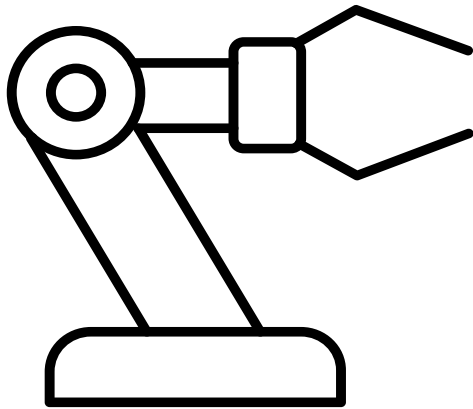
AI



# Artificial Narrow Intelligence (ANI)

or

Weak AI



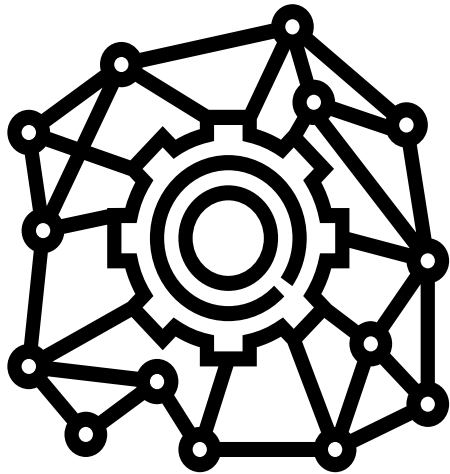
Machine Learning

- **Only type of AI that currently exists**
- **Has a narrow range of abilities.**
- **Is pulling from a single data set.**
- **May appear conversational, but responses are a programmatic response to a defined algorithm.**

# Artificial General Intelligence (AGI)

or

## Strong AI



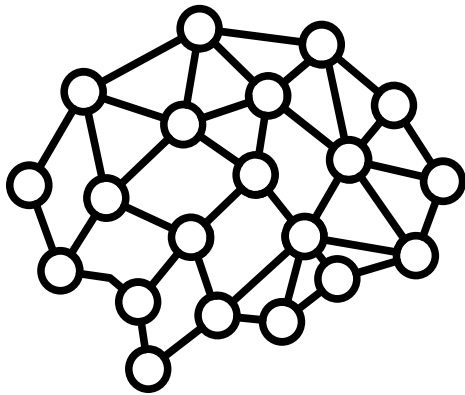
Machine Intelligence

- **Does not exist. Is only theoretical at this point.**
- **Will have access to larger/broader data sets.**
- **Can perform any intellectual task a human can.**
- **Will be able to reason, solve problems, and think abstractly.**

**Artificial Super Intelligence (ASI)**

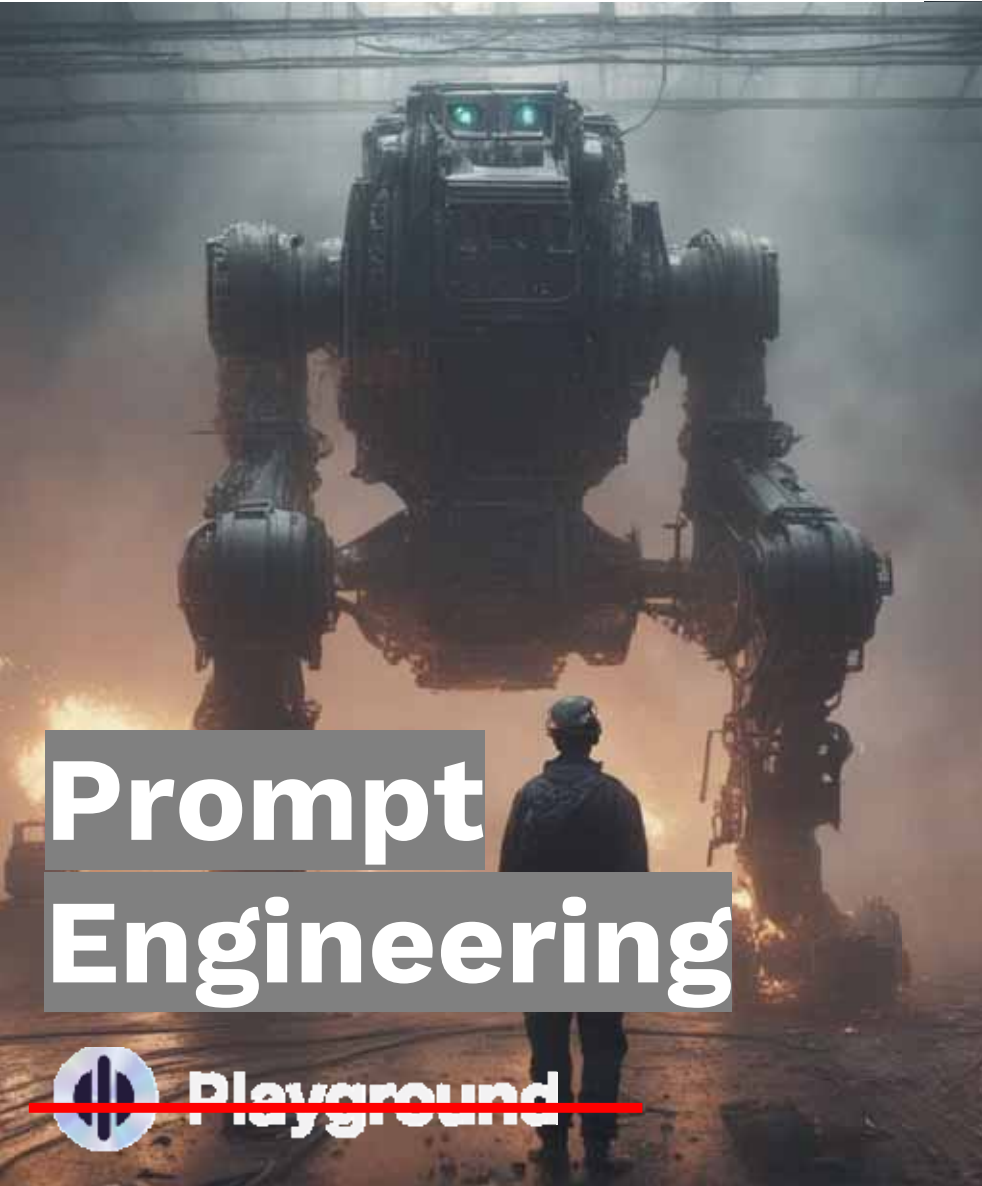
**or**

**The extinction of humans**




**Machine Consciousness**

- **Moves beyond mimicking humans**
- **Machines are self-aware**
- **The machine's knowledge far exceeds that of humans.**



# Prompt Engineering

 **Playground**





“an ai robot prompt engineer”



school of architecture



school of architecture

Delete

school of architecture **and design**

school of architecture **ut austin**

school of architecture **university of miami**

school of architecture **uva**

school of architecture **syracuse**

school of architecture **umd**

school of architecture **notre dame**

school of architecture **and planning ub**

school of architecture **near me**

Google Search

*Report inappropriate predictions*

- Knowlton
- Notre dame
- Mcewen school
- Miami
- Ohio state university
- Uva
- London
- Unm
- Usc
- San diego
- Interior design



Daily Trojan The School of Architecture is ...



Architectural Record Architecture of Architecture Schools ...



University of Miami of Architecture | University of Miami



Ross Barney Architects of Illinois School of Architecture ...



ArchDaily Inspiring Architecture School Buildings ...



University of Miami of Architecture | University of Miami



UF College of Design, Construction and PL Home | School of Architecture



FIU Carta - Florida International Unive... School of Architecture - College of ...



ArchDaily Mack Scogin Merrill Elam Arc...



UVA Today - The University of Virginia UVA Selects Ila Berman as Dean o...



College of Architecture, Planning and Landscape Archite... About the School of Architecture ...



Think Wood McEwen School of Architecture - Thi...





Stillwater



- stillwater
- stillwater **ok**
- stillwater **mn**
- stillwater **insurance**
- stillwater **medical center**
- stillwater **restaurants**
- stillwater **band**
- stillwater **weather**
- stillwater **movie**
- stillwater **high school**

Google Search

*Report inappropriate predictions*

- Movie
- Abigail Breslin
- Oklahoma
- Almost famous
- Apple tv
- Band
- Saints row
- Lake
- Area high school
- Minnesota
- Poster



IMDb Stillwater (2021) - IMDb



IMDb Stillwater (TV Series 20...



IMDb Stillwater (TV Series 20...



Wikipedia Stillwater, Minnesota - Wikipedia



IMDb Stillwater (2021) - IMDb



Rotten Tomatoes Stillwater: Season 1 | R...



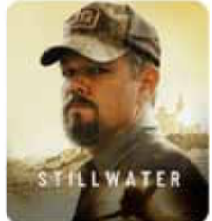
Plugged In Stillwater - Plugged In



We Live Entertainment Stillwater' Review: An American In ...



Apple Apple TV+ ...



The More Perfect Union Stillwater' Plugged Wi...



Visit Stillwater Downtown Stillwater | Visit Stil...



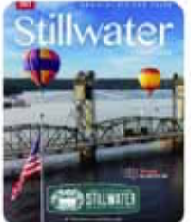
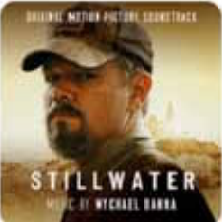
Variety Stillwater' Review: A Humbling Loo...



Rolling Stone Stillwater Runs Deep!



Discogs Stillwater | Discogs





school of architecture

- school of architecture
- school of architecture and design
- school of architecture ut austin
- school of architecture university of miami
- school of architecture uva
- school of architecture syracuse
- school of architecture umd
- school of architecture notre dame
- school of architecture and planning ub
- school of architecture near me

Google Search

*Report inappropriate predictions*

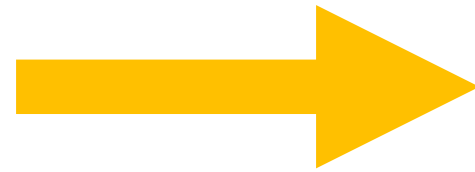


Stillwater

- stillwater
- stillwater ok
- stillwater mn
- stillwater insurance
- stillwater medical center
- stillwater restaurants
- stillwater band
- stillwater weather
- stillwater movie
- stillwater high school

Google Search

*Report inappropriate predictions*



Independent Searches



🔍 School of Architecture Stillwater ✕ 🗣️ 🔄

🔍 school of architecture **okstate**

🔍 stillwater architecture

🔍 school of architecture **staff**

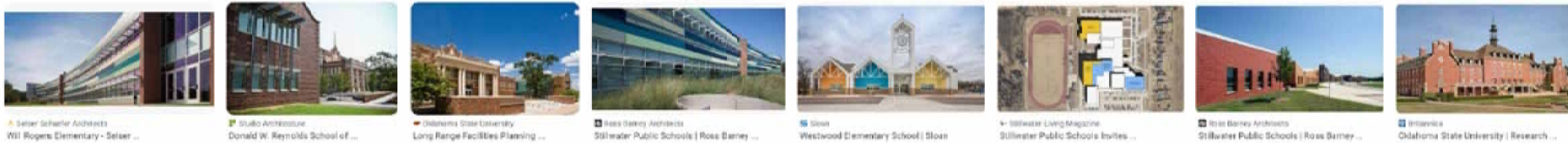
🔍 stillwater **architects**

Google Search

I'm Feeling Lucky

[Report inappropriate predictions](#)

- oklahoma state university
- fire station
- pony stadium
- stillwater area
- stillwater high school
- spears school
- football stadium
- selser schaefer
- activity center



SCHOOL

|

ARCHITECTURE

|

STILLWATER



School of Architecture Stillwater



Image of a school  
Located in Stillwater  
Pulled from an architect's website



Image of architecture  
That says Stillwater

**Independent Terms**

Reading | | the lines

Finding PaTtErNs and predicting %

# Humans In the Loop

“a human in the loop generated by AI”

60  
MINUTES

60  
MINUTES



60  
MINUTES





**Data in | Data Out**

**2023**

**A contemporary library to hold the history and culture of hip hop music**



**2025**

**A contemporary library to hold the  
history and culture of hip hop music**





**2023**

**A contemporary  
museum to hold  
the history and  
culture of women**

**2025**

**A contemporary museum to hold the history and culture of women**



**N**



**COLLABORATIONS  
PHARMACEUTICALS, INC.**

NETFLIX

GGI  
EEP

TER

OUS A.I.



91°  
6:14



 Adobe Firefly

# Copyright, Creators, and Tools

“a robot judge”



# Midjourney

Midjourney is a generative artificial intelligence program and service created and hosted by San Francisco-based independent research lab Midjourney, Inc. Midjourney runs on Discord servers.

**Developer(s):** Midjourney, Inc

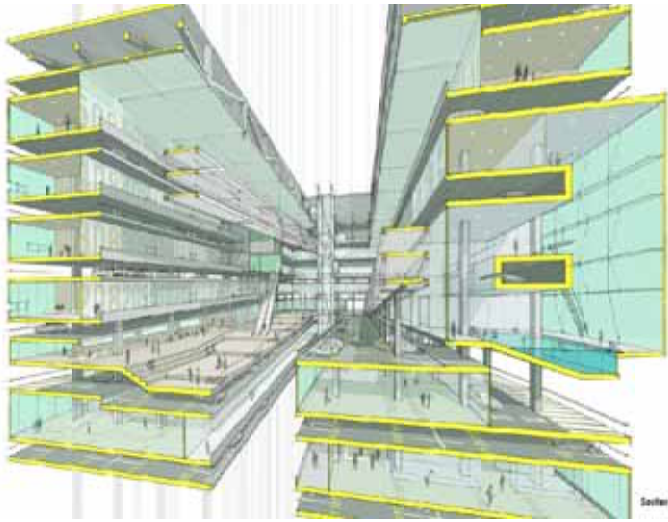
**Initial release:** July 12, 2022; 13 months ago (open beta)



Midjourney

Design a school of architecture  
**FOR OKLAHOMA STATE UNIVERSITY**





Lewis Tsurumaki Lewis



Midjourney



Lebbeus Wood



**Name the  
Architect**



A modern contemporary building designed by

**Zaha Hadid**

And set to the music of

**Daft Punk**





**Name the  
Architect**



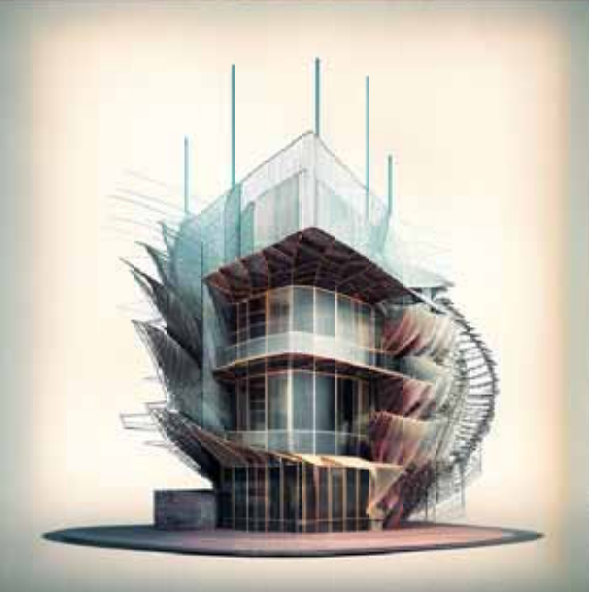
modern contemporary architecture weaved out of  
bright yarn designed by

**bjarke ingels**

and set to the music of

**jimmy buffet**





**Name the  
Architect  
and  
Musician**



a modern building designed by

**Santiago Calatrava**

based on blowing in the wind by

**Bob Dylan**

and constructed of wire and feathers





**AI is the tool, but  
Who is the Author?  
Who is the Owner?**

## **Copyright Registration of Architectural Works**

An architectural work is the design of a building as embodied in any tangible medium of expression, including a building, architectural plans, or drawings. Copyright protects architectural works created on or after December 1, 1990. Copyright also protects unconstructed architectural works embodied in unpublished plans or drawings on December 1, 1990, if the design was constructed on or before December 31, 2002

<https://www.copyright.gov/circs/circ41.pdf>

## Marlon Blackwell vs HBG Design (Settled in 2022)



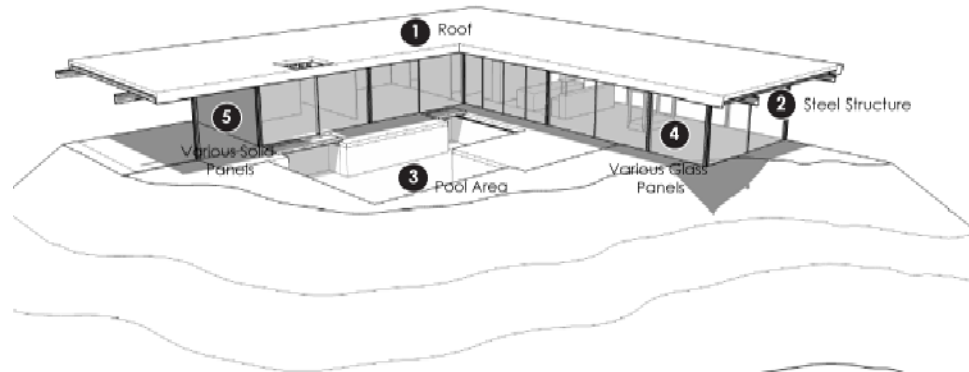
**Creator + Tools of the Trade = Copyright**

Inspired By \_\_\_\_\_  
Precedent Study of \_\_\_\_\_  
Example of \_\_\_\_\_

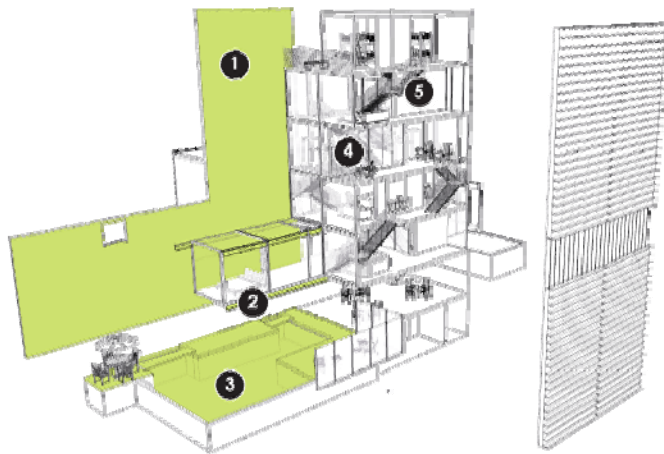


THADEN REELS  
Bentonville, Arkansas (2019)

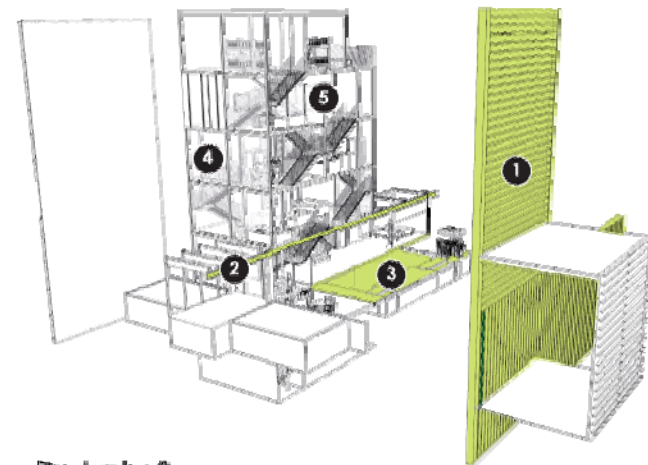
CSH 22 Iso



CSH 22

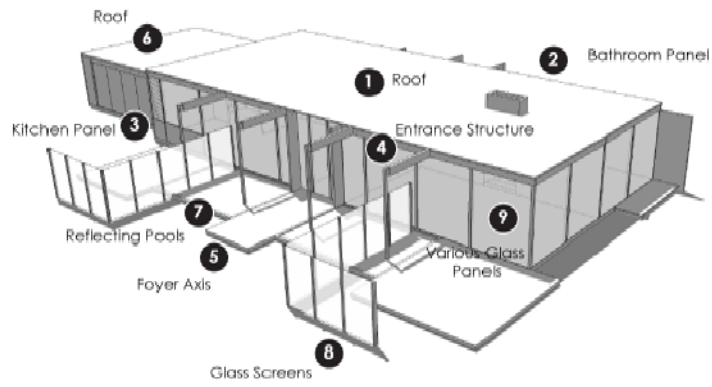


Duplex Iso 1

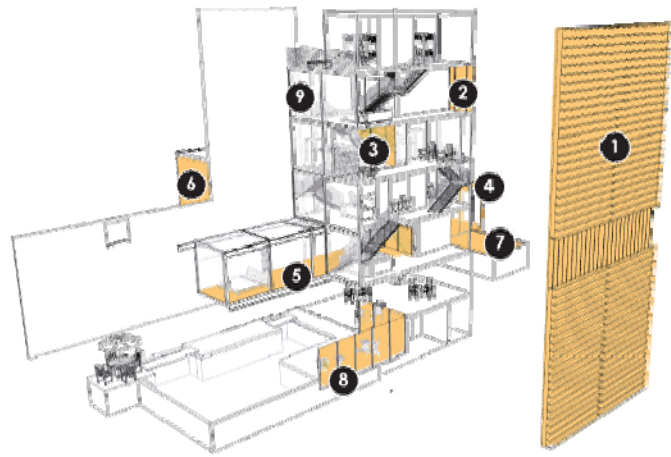


Duplex Iso 2

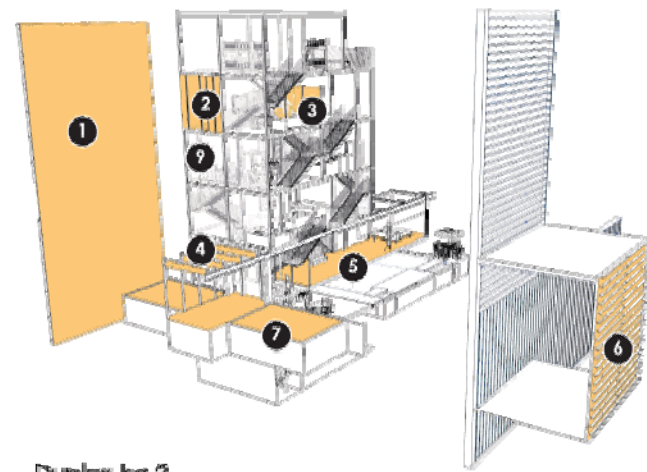
CSH 23 Iso



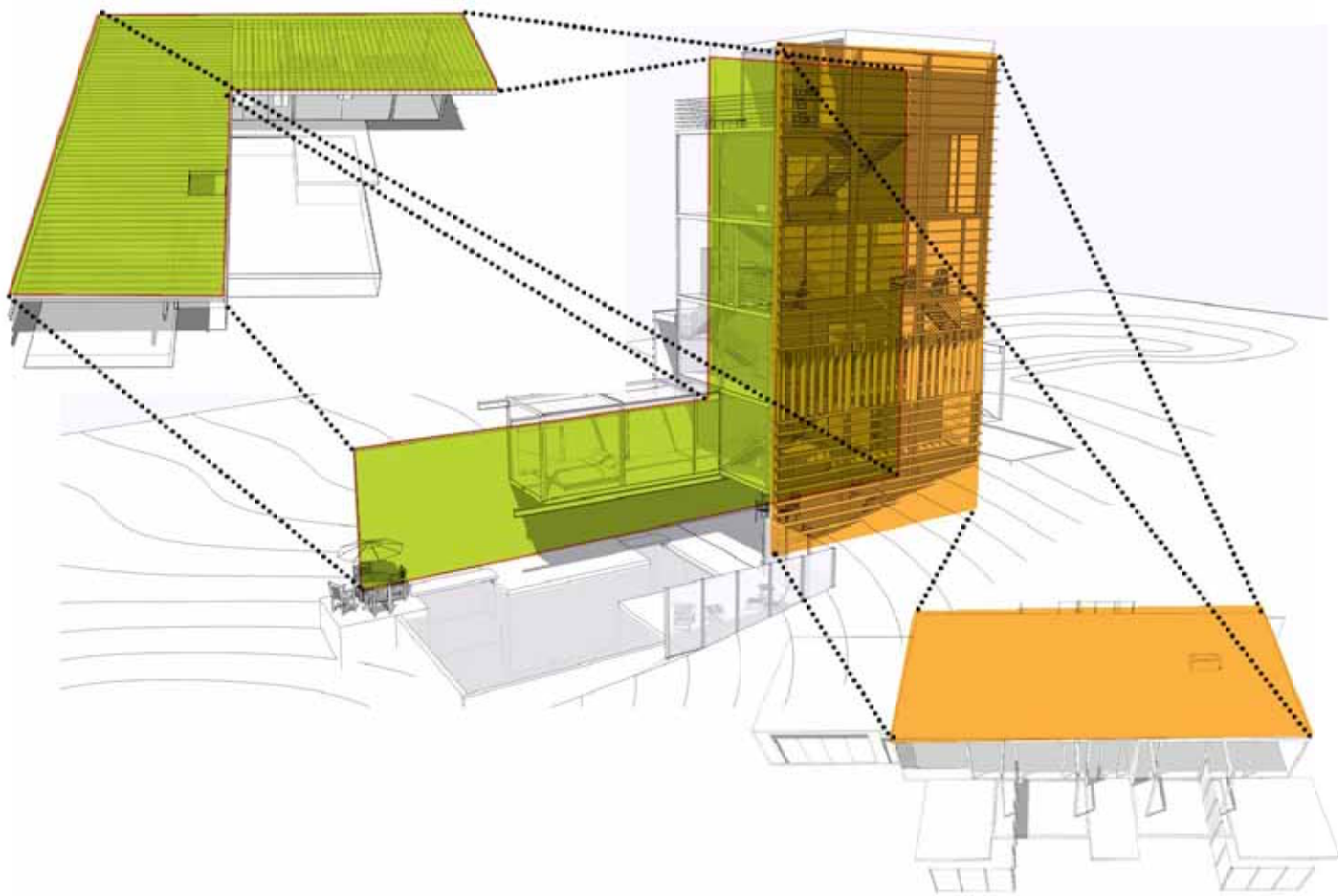
CSH 23



Duplex Iso 1



Duplex Iso 2





Did I infringe  
on a copyright?

# Monkey Selfies

*Naruto v. David Slater et al.*  
2014-2018

**Built the framework.**



# Monkey Selfies

*Naruto v. David Slater et al.*  
2014-2018

**Built the framework.  
Provided the tools.**



# Monkey Selfies

*Naruto v. David Slater et al.*  
2014-2018

**Built the framework.**  
**Provided the tools.**  
**Was not the creator.**



# Monkey Selfies

*Naruto v. David Slater et al.*  
2014-2018

**Built the framework.**  
**Provided the tools.**  
**Was not the creator.**  
**Creator was not human.**



# Monkey Selfies

*Naruto v. David Slater et al.*  
2014-2018

**Therefore no human holds a copyright.  
Public Domain.**



# AI Ownership

*Stephen Thaler and the  
Creativity Machine Case*

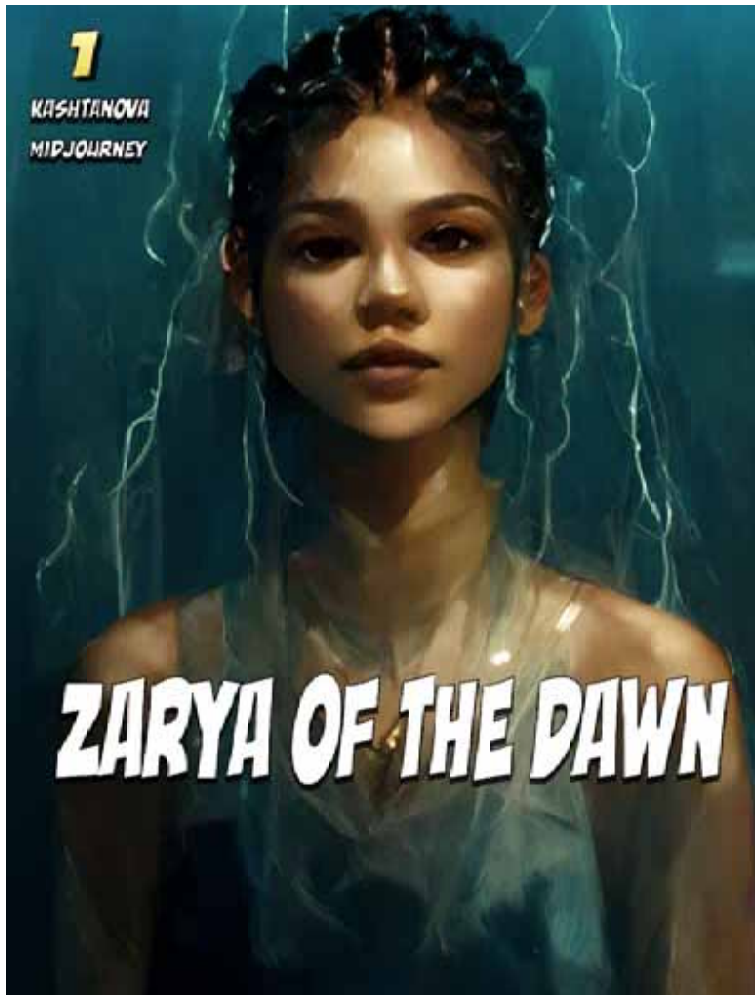
In 2023, a federal judge upheld a finding from the U.S. Copyright Office that a piece of art created by AI is not open to copyright protection.



*Recent Entrance to Paradise*

Copyright law has **“never stretched so far”** to **“protect works generated by new forms of technology operating absent any guiding human hand,”** U.S. District Judge Beryl Howell found...The Copyright Office denied the application on the grounds that **“the nexus between the human mind and creative expression”** is a crucial element of protection.

**“Human authorship is a bedrock requirement.”**



We conclude that Ms. Kashtanova **is the author of the Work's text as well as the selection, coordination, and arrangement of the Work's written and visual elements.**

That authorship is protected by copyright. However, as discussed below, **the images in the Work that were generated by the Midjourney technology are not the product of human authorship.**

Because the current registration for the Work does not disclaim its Midjourney-generated content, we intend to cancel the original certificate issued to Ms. Kashtanova and issue a new one covering only the expressive material that she created.

## *Prompt*

*professional photo, bespectacled cat in a robe reading the Sunday newspaper and smoking a pipe, foggy, wet, stormy, 70mm, cinematic, highly detailed wood, cinematic lighting, intricate, sharp focus, medium shot, (centered image composition), (professionally color graded), ((bright soft diffused light)), volumetric fog, hdr 4k, 8k, realistic*

## *Output*



Credit: [Copyright Office](#)

[Home](#) / [NewsNet Archive](#) / [NewsNet Issue 1060](#)

## Copyright Office Releases Part 2 of Artificial Intelligence Report

Issue No. 1060 - January 29, 2025

“The Office affirms that existing principles of copyright law are flexible enough to apply to this new technology, as they have applied to technological innovations in the past. It concludes that the outputs of generative

**AI can be protected by copyright only where a human author has determined sufficient expressive elements.**

This can include situations where a human-authored work is perceptible in an AI output, or a human makes creative arrangements or modifications of the output,

**But not the mere provision of prompts.”**

### **Prompt**

*"a young cyborg woman  
(((roses))) flowers coming  
out of her head,  
photorealism, cinematic  
lighting, hyper realism, 8k,  
hyper detailed."*

### **Input**



### **Output**



"Where a human inputs their own copyrightable work and that work is perceptible in the output, they will be the author of at least that portion of the output"

# US appeals court rejects copyrights for AI-generated art lacking 'human' creator

By Blake Brittain

March 18, 2025 1:05 PM CDT - Updated 9 days ago



AI (Artificial Intelligence) letters are placed on computer motherboard in this illustration taken, June 25, 2023. REUTERS/Dedo Ruvic/illustration [Purchase Licensing Rights](#)

March 18 - A federal appeals court in Washington, D.C., on Tuesday affirmed that a work of art generated by artificial intelligence without human input cannot be copyrighted under U.S. law.

The U.S. Court of Appeals for the District of Columbia Circuit [agreed](#) with the U.S. Copyright Office that an image created by Stephen Thaler's AI system "DABUS" was not entitled to copyright protection, and that only works with human authors can be copyrighted.



*Recent Entrance to Paradise*

**So, why not claim human authorship?**





# BUILDING[character]

Francis E. Wilmore  
asl-architects.com  
fewdesign.com



## MY LIBRARY OUR FUTURE

### MY Library OUR Future

- Community Input
- Health, Safety, and Wellness
- Building Features
- Rudisill Regional Library
- Brookside Library
- South Broken Arrow Library
- Owasso Library
- Questions? Contact Us!
- In the News
- Support The Campaign

## MY Library, OUR Future

Tulsa City-County Library is pleased to announce we are expanding Rudisill Regional Library, Brookside Library, South Broken Arrow Library and Owasso Library. These four heavily used branches are in severe need of replacement due to outdated infrastructure and technology, size limitations for current usage and parking limitations. Through this campaign, TCCL's overall collection will increase by approximately 45,000 items, representing an approximate 30-percent increase for each of these four locations.



FEW]design

FFA[design] design



### Duties Luxury Collection

Starting in 2013 I led the design of the terminal A-B central court at Dallas International airport. After creating an architectural concept and standards to be followed by various brands that won the RFP for our developer, I worked with (1) luxury brands as they wished to implement their brands' identity within the scheme. After creating a concept for (2) duty free stores that won a second RFP at the airport, I was able to complete an 8th store in the court that serves as a centerpiece to the luxury collection.



LEAD ARCHITECTURAL DESIGN



TO PROVIDE A RESEARCH + CONSULTING SERVICES



PROJECT MANAGING THROUGH CONSTRUCTION

ADDITIONAL PROJECTS





**Project Info**

**Location**

Santa Monica, CA

**Completion Year**

2007

**Architect**

Moore Ruble Yudell Architects & Planners, Santa Monica, CA

**Installer**

Woodbridge Glass, Inc., Tustin, CA



Santa Monica Civic





**Project Info**  
**Location**  
 Santa Monica, CA  
**Completion Year**  
 2007  
**Architect**  
 Moore Ruble + Anderson Architects & Planners, Santa Monica,  
 Designer  
 Woodbridge Glass, Inc., Tustin, CA

**Not my Project**



Santa Monica Civic



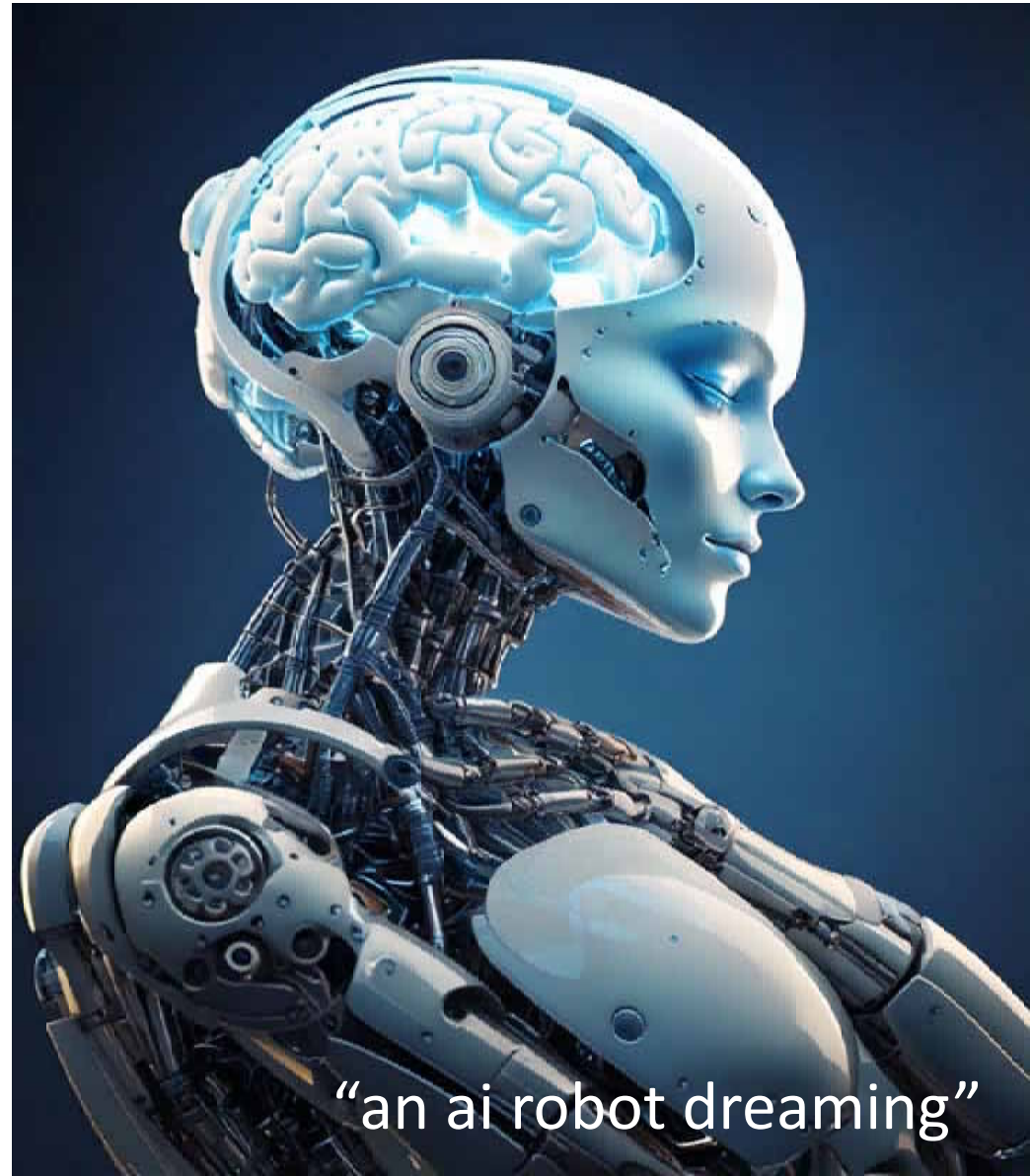
**No Green Roof**



**Daylighting was NOT a key feature**



# Hallucinations



“an ai robot dreaming”

60  
MINUTES



Sundar Pichai  
CEO of Google

# Emergent Properties

“a robot trying to understand emergent properties in a black box”



60  
MINUTES





# Large Language Models (LLM)



“an ai robot’s idea of a large language model”

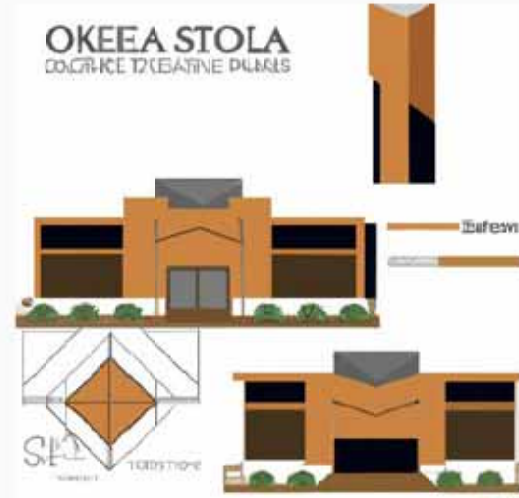


DALL-E and DALL-E 2 are text-to-image models developed by OpenAI using deep learning methodologies to generate digital images from natural language descriptions, called "prompts". DALL-E was revealed by OpenAI in a blog post in January 2021, and uses a version of GPT-3 modified to generate images. [Wikipedia](#)

**Initial release date:** January 5, 2021

**Developer:** [OpenAI](#)

 DALL-E 2



Design a school of architecture  
**FOR OKLAHOMA STATE UNIVERSITY**

 DALL-E AI





**Adobe Firefly**, a product of Adobe Creative Cloud, is a generative machine learning model that is used in the field of design. It is in public beta test phase. Adobe Firefly is developed using Adobe's Sensei platform. Firefly is trained with images from [Creative Commons](#), [Wikimedia](#) and [Flickr Commons](#) as well as 300 million images and videos in [Adobe Stock](#) and the public domain. [Wikipedia](#)

**Initial release date:** June 22, 2023

**Developer:** [Adobe](#)

2023



Adobe  
Firefly

Design a school of architecture  
**FOR OKLAHOMA STATE UNIVERSITY**

2025





LookX is an emerging company that focuses on artificial intelligence and architectural design. We are a small team dedicated to the fields of architectural design and AI...Our goal is to utilize our expertise in cutting-edge technologies, in-depth understanding of the architectural design industry, and extensive research in human-computer interaction to facilitate the implementation of AI technology in the service of architectural design practitioners. (LookX.AI)

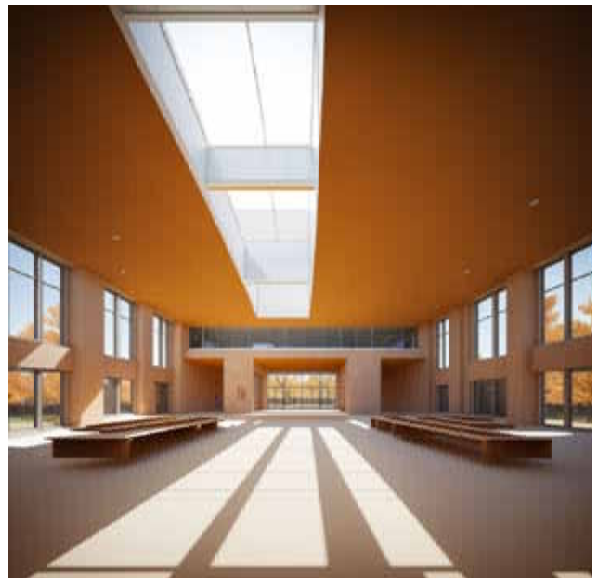
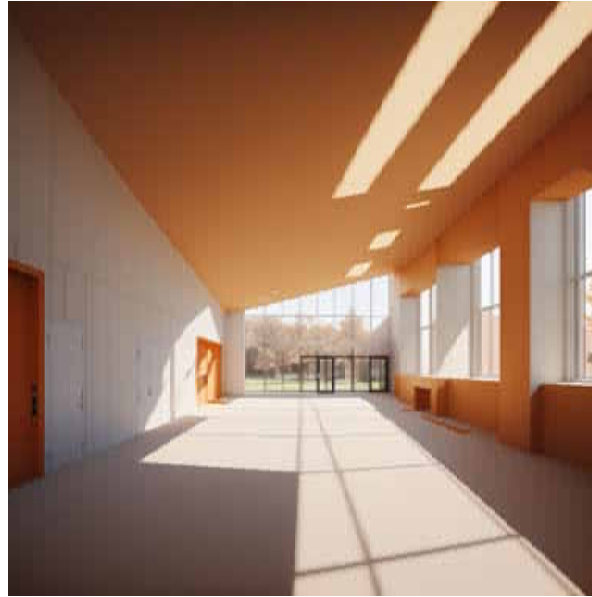
**Plugins:** Sketchup and Rhino

**Train Custom Models**



lookX.ai

Design a school of architecture  
**FOR OKLAHOMA STATE UNIVERSITY**



# Retexturing/Editing

“A robot hand sketching a building. The sketch fades from a sketch to a rendering across the paper”



Mldjourney

MJ



Edit



Edit

Retexture

Retexture will change the contents of the input image while trying to preserve the original structure.

For good results, avoid using prompts that are incompatible with the general structure of the image.

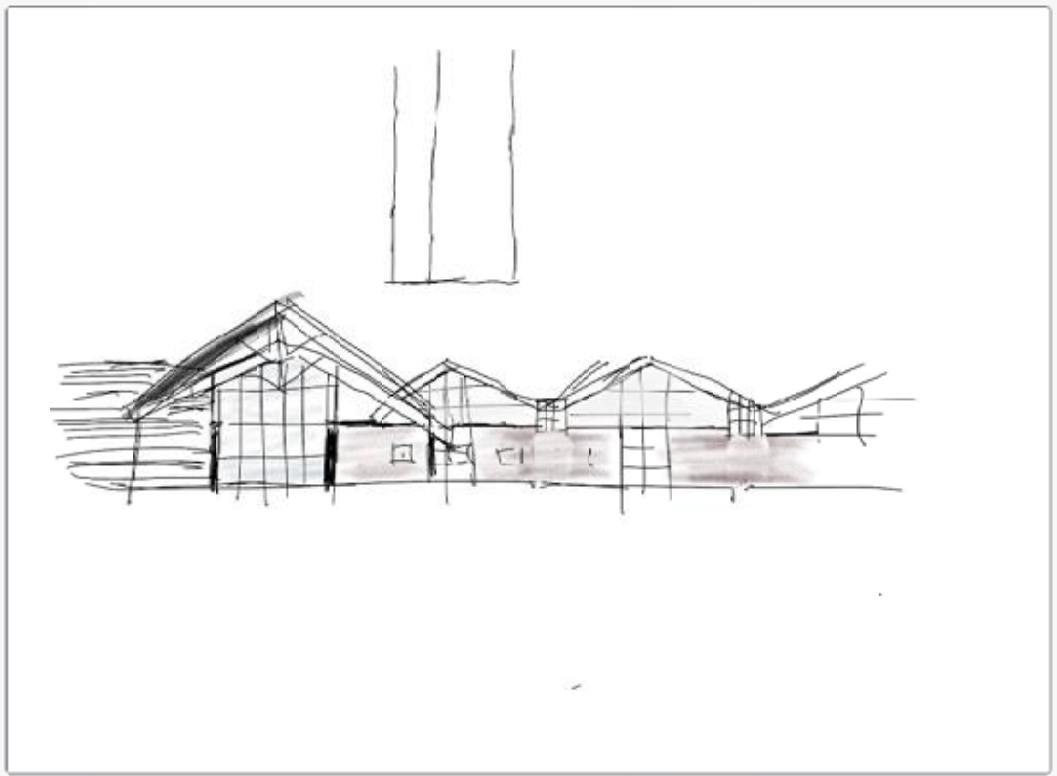
Export

Upscale to Gallery

Download Image

An architectural rendering of a modern high school building with brick and glass built in a neighborhood. Warm fall day at dusk --profile nnexmy9 --stylize 150

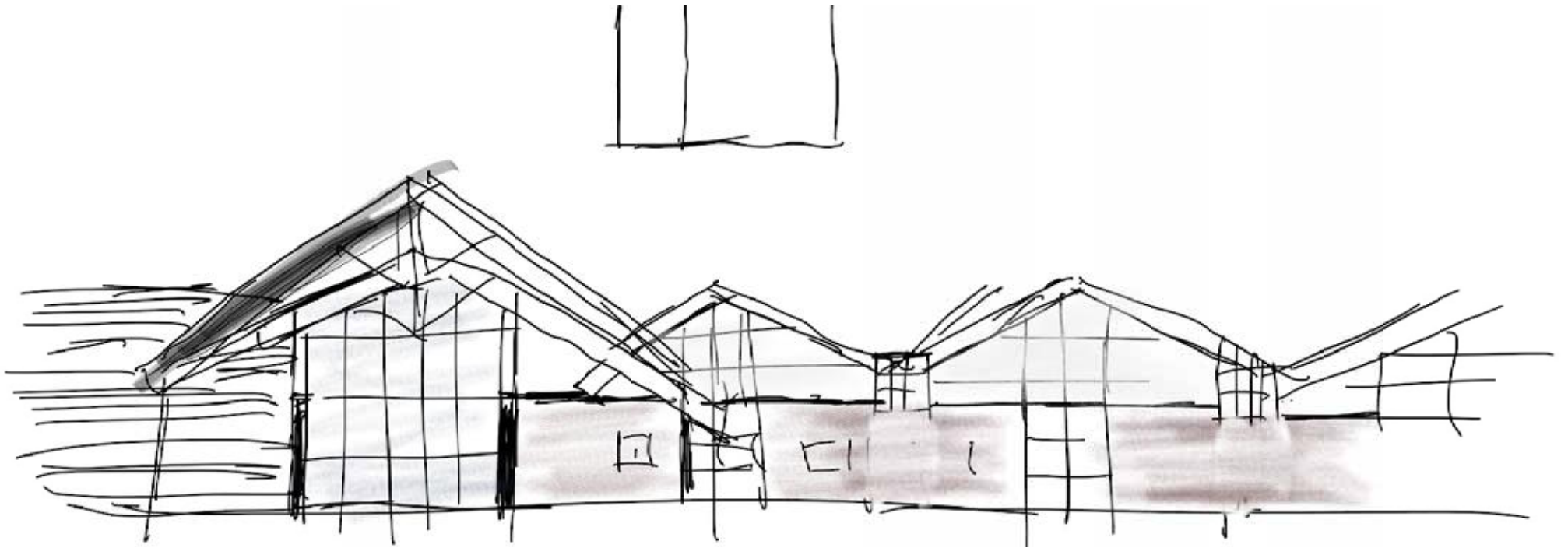
Submit Retexture



View All

New

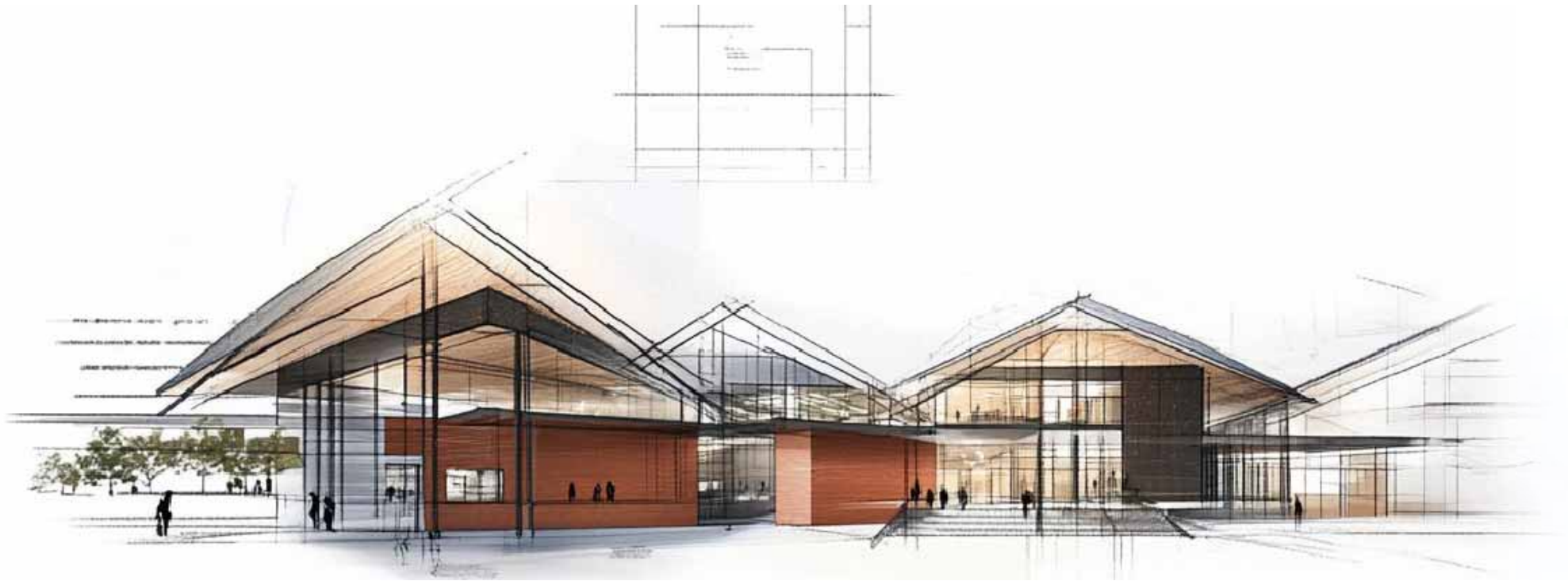




An architectural elevation drawing of a modern high school building with brick and glass built in a neighborhood. --profile nnexmy9 --stylize 150



An architectural elevation drawing of a modern high school building with brick and glass built in a neighborhood. --profile nnexmy9 --stylize 150



An architectural elevation drawing of a modern high school building with brick and glass built in a neighborhood. --profile nnexmy9 --stylize 150



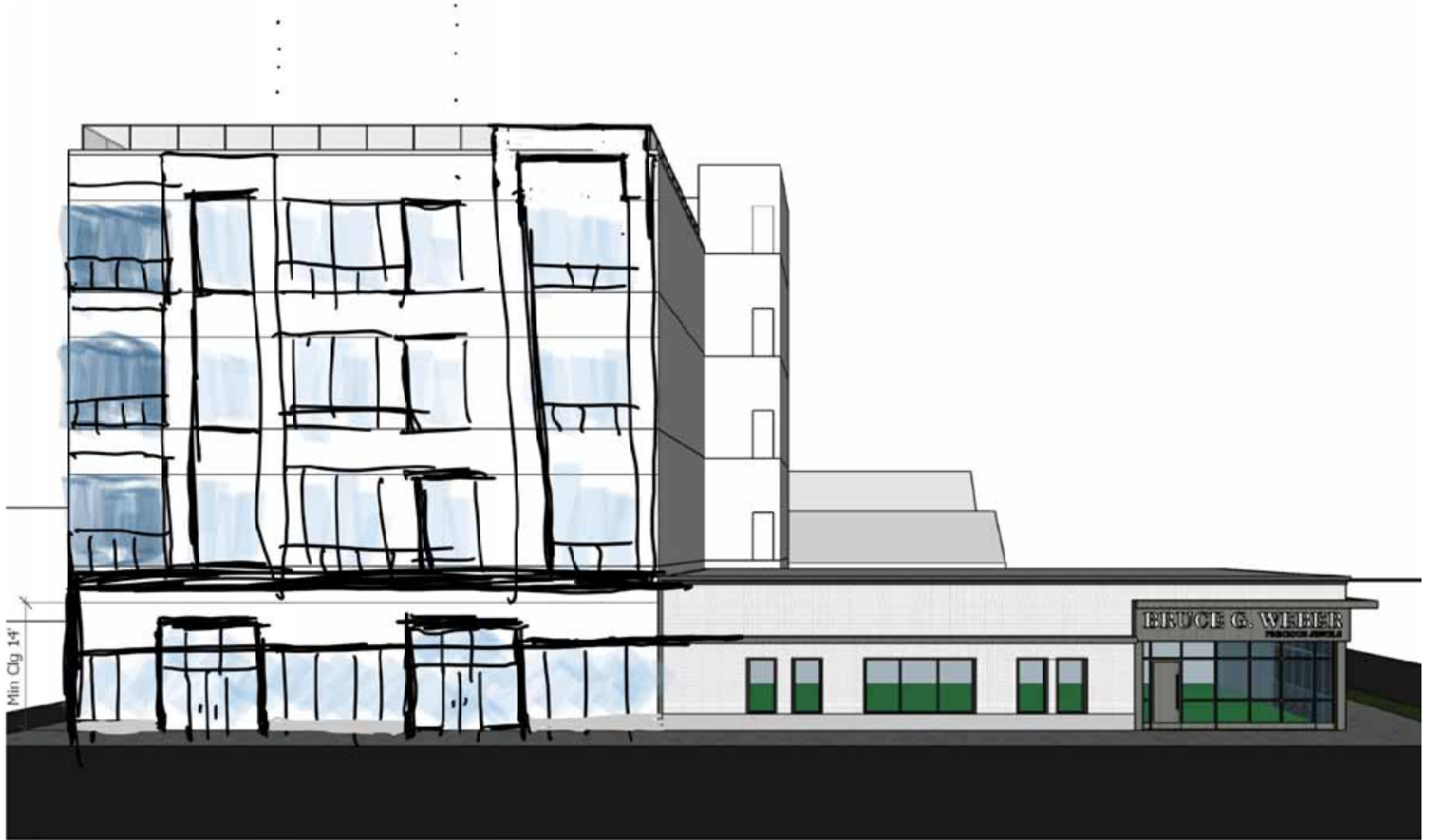
An architectural rendering of a modern high school building with brick and glass built in a neighborhood. --profile nnexmy9 --stylize 150



An architectural rendering of a modern high school building with brick and glass built in a neighborhood. --profile nnexmy9 --stylize 150

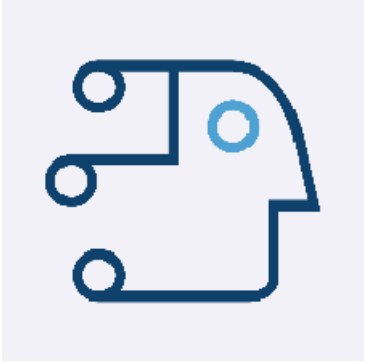


An architectural rendering of the exterior view of three buildings that form a modern high school building modern architecture with glass and brick materials, from an eye-level perspective with a neighborhood in the background. On a cold sunny winter day



A rendered architectural elevation of a modern mixed use apartment building with a city in the background. A warm sunny day in Oklahoma. White brick, blue glass, dark grey metal bands, rooftop patio.



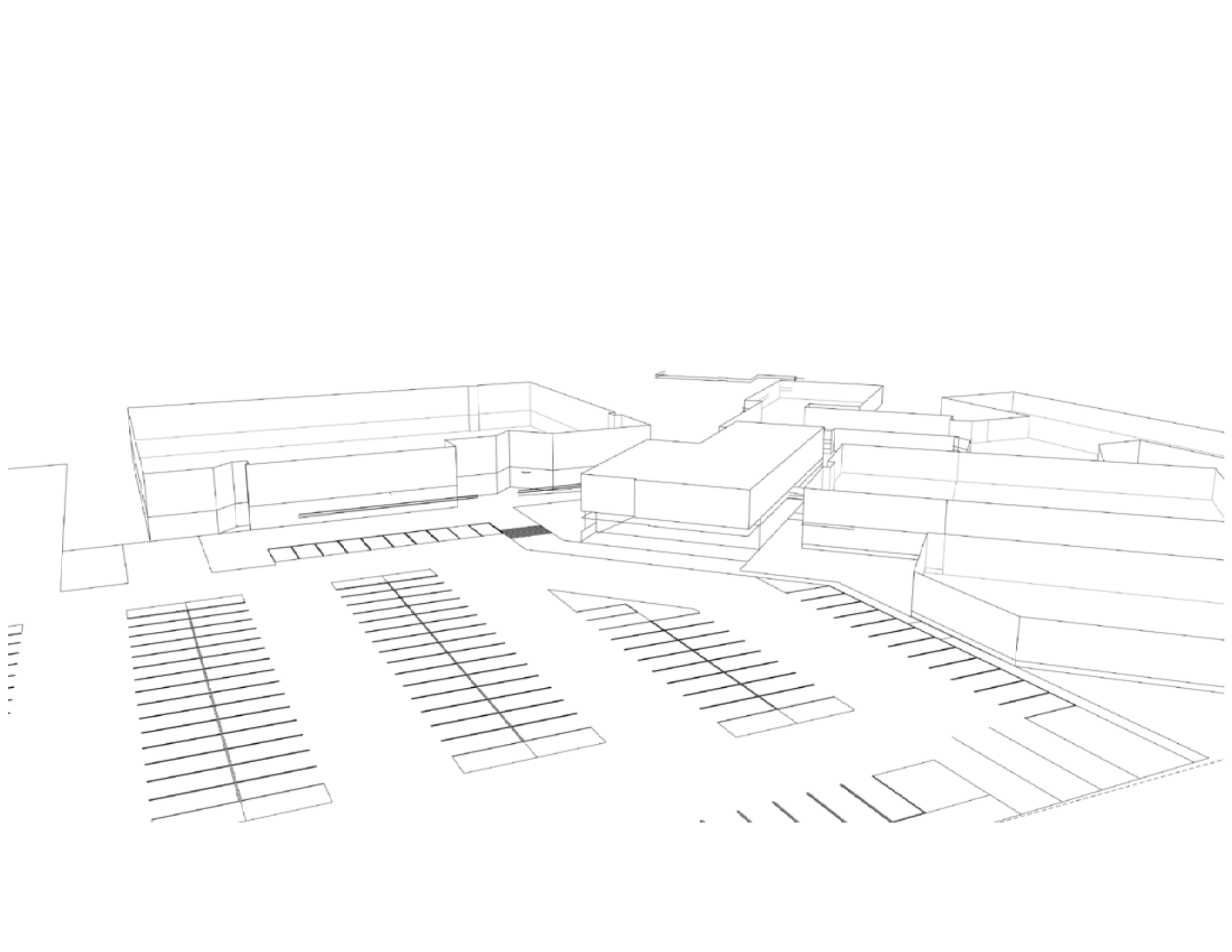


## Sketchup Diffusion

Generative AI is transforming the way that Design and Architectural Engineering and Construction professionals get things done. SketchUp Diffusion integrates this technology into the SketchUp you know and love to help accelerate the creation of compelling visuals whenever you need them. Whether you are suffering from a block in your creative process, or need some extra visuals to help support the narrative you've established in your project, or just want to fully express your unique creative vision, SketchUp Diffusion's generative AI can help.

**Plugin:** Sketchup

**Use Your Model as a Base**

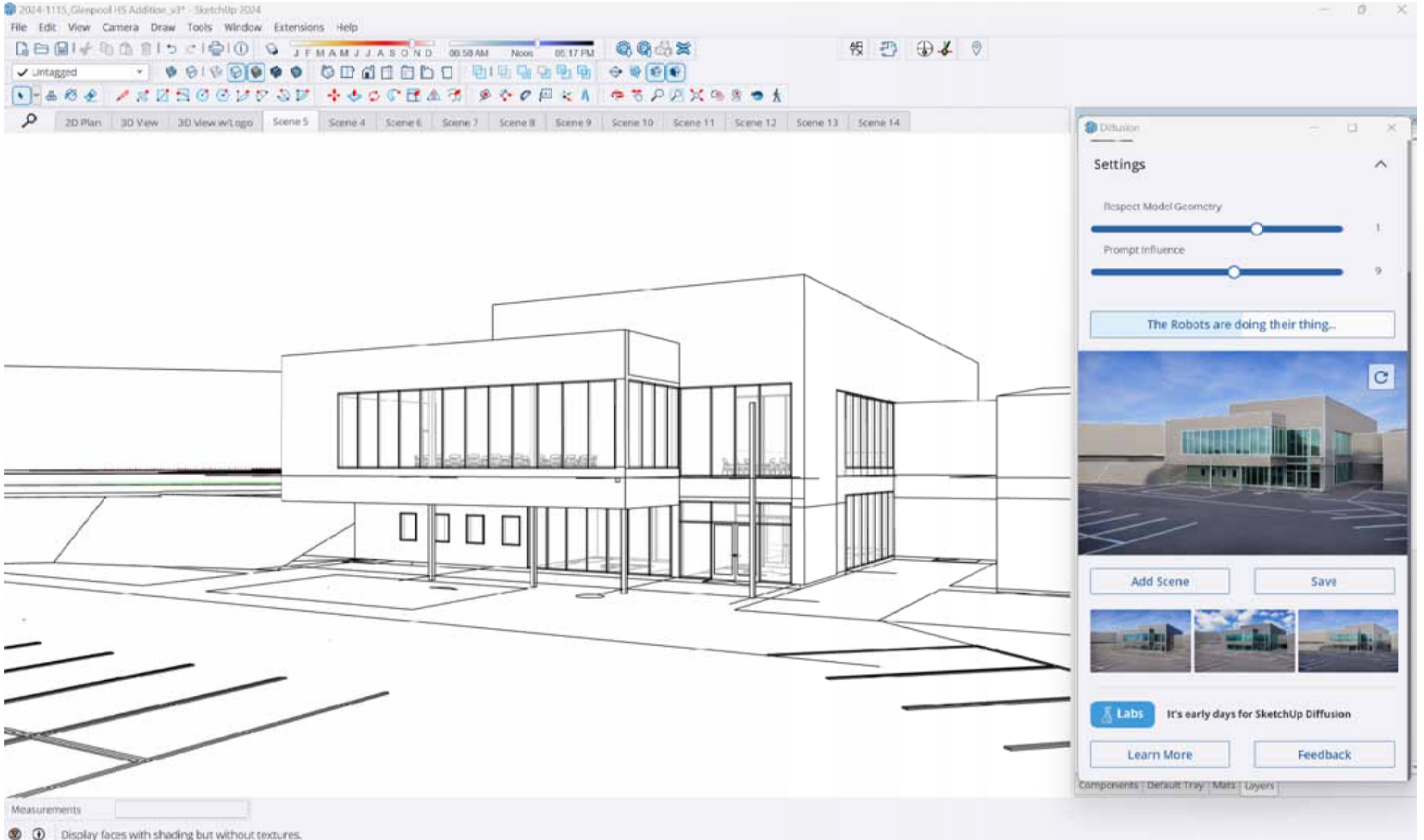




Add Scene

Save









Midjourney



A rendering of a modern high school with grey corrugated metal siding, large glass windows, accents of blue, with a hillside and stair on the left and plaza







Blue corrugated metal siding

Properties

Generative Layer

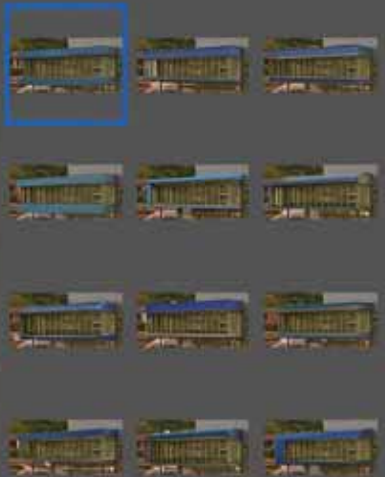
Prompt:

horizontal blue corrugated metal panel

Generate

Variations

1/12



Parking island with native grasses and a tree in the foreground





Blue sports car

Fall trees in the background





Remove the sign





Parking lot with wet reflective asphalt



Students in a plaza

A warm fall sky at dusk






# Master Plan Graphics


← Back

✓ Set as Default   Use in Prompt



 **Upload Images**  
Upload images from your computer to add to your moodboard.

 **Add from Link**  
Add images from around the web to your moodboard.

 **Add from Gallery**  
Select images from your gallery to add to your moodboard.





architects master plan drawing of a modern high school campus. watercolor sketchy style. Buildings made of brick and lots of glass. parking lot in the foreground. neighborhood in the background. bright sunny day --chaos 10 --profile hdeevhm --stylize 700



Submit Edit

### Image Size

Reset



Portrait

Square

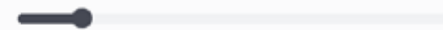
Landscape



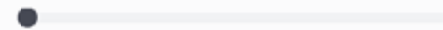
### Aesthetics

Reset

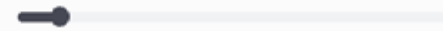
Stylization



Weirdness



Variety



### Model

Reset

Mode

Standard

Raw

Version

6.1



Personalize

Master Plan Graphics



On

Off

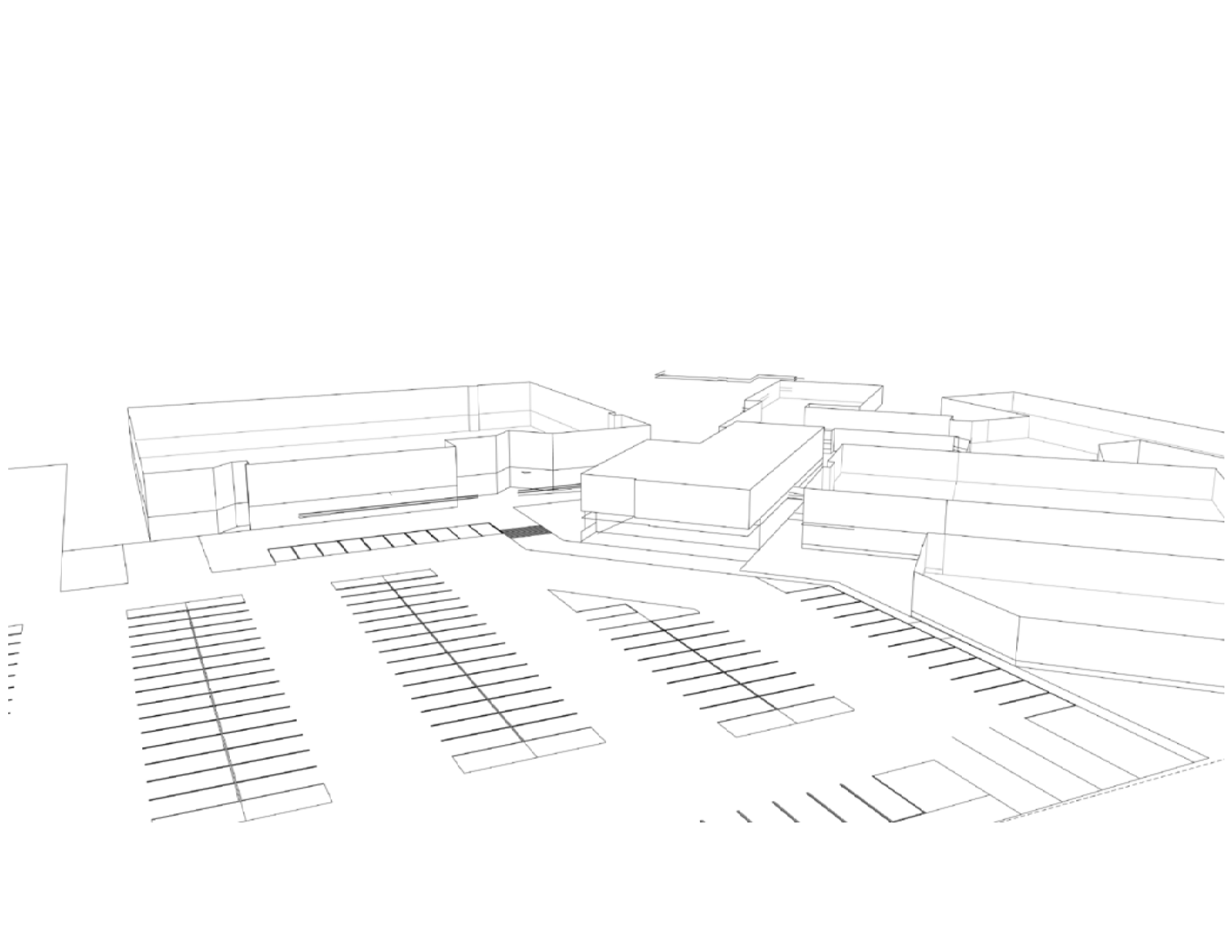
### More Options

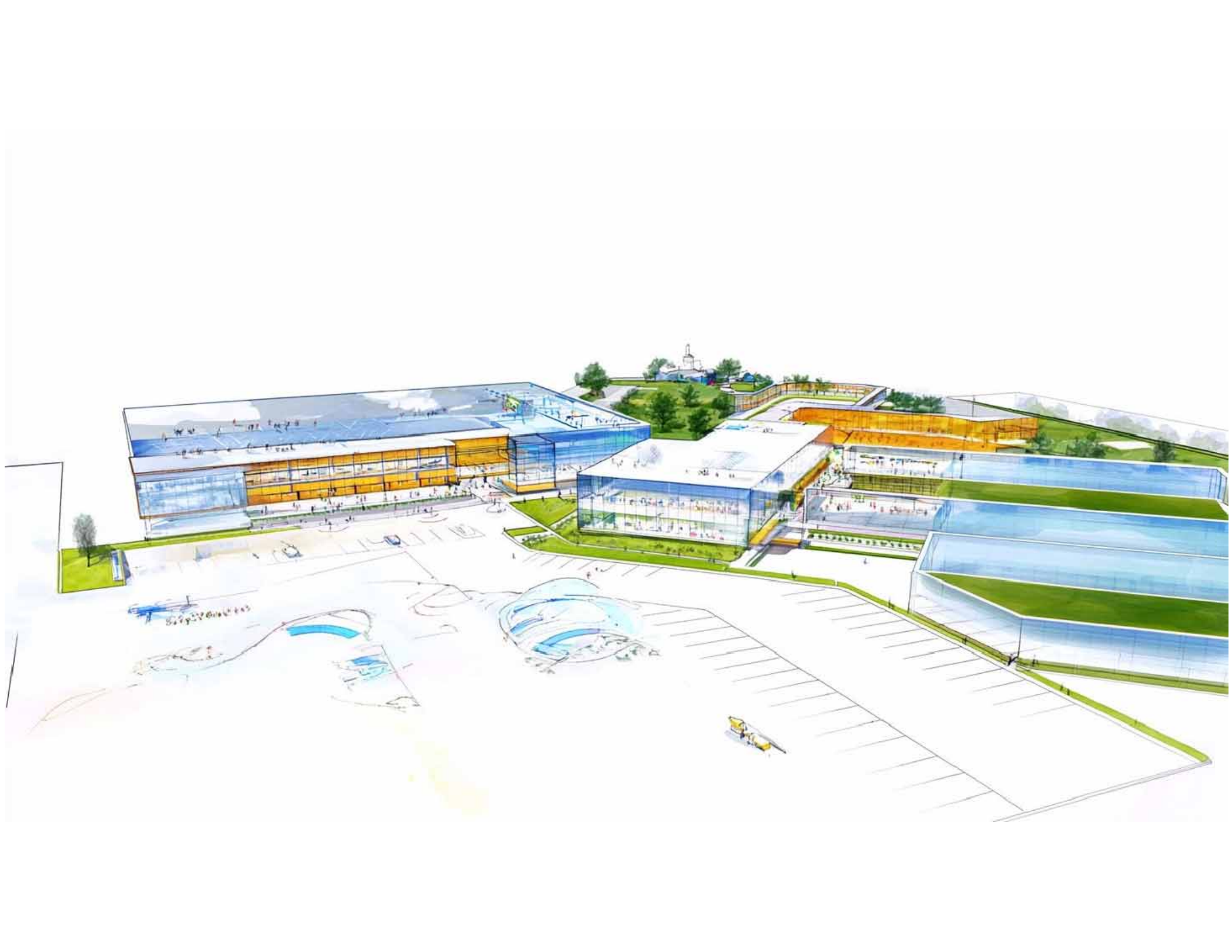
Speed

Relax

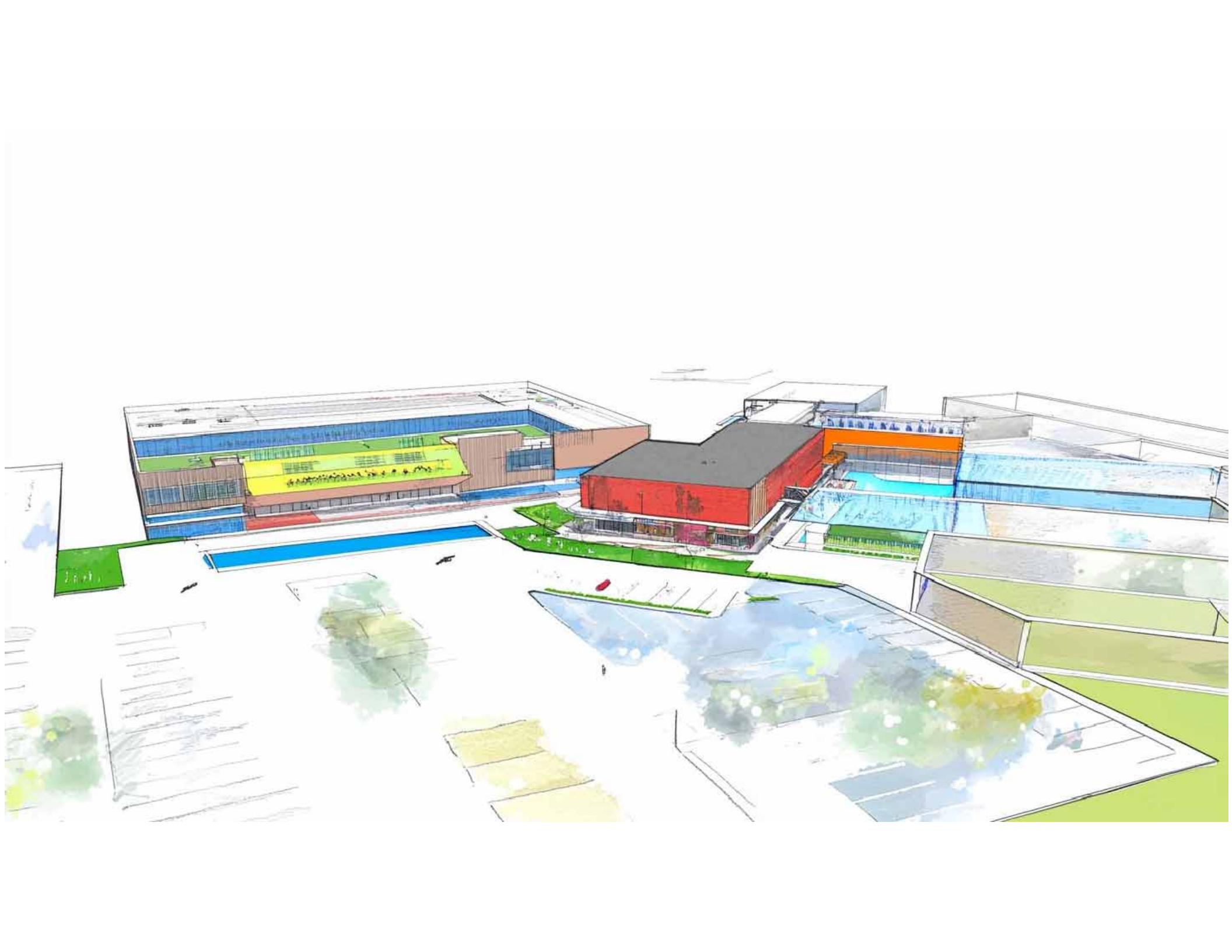
Fast

Turbo









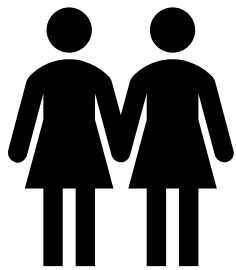




Mldjourney

# Agnostic Operation

“a neural network of software that  
talks to each other”



ChatGPT



Midjourney

## ARCHITECTURAL VISIONING INSTRUCTIONS



Put your red dot on the image that best represents a:  
**Classroom,  
Lecture Space, or  
Teacher-Led Environment**



Put your green dot on the image that best represents a space for  
**Small Group Work,  
1 on 1 Instruction, or  
Student-Led Learning**



Put your blue dot on the image that best represents a space for  
**Individual Study,  
Spending downtime, or  
Focused Work**



Put your yellow dot on the image that best represents a  
**Space for Outdoor Learning**



Objective/Subjective Architectural Visioning



A modern classroom

chaos: 60 style: raw stylize: 150 weird: 1200

profile Your Global Profile



A modern classroom with lots of natural light and wood floors

chaos: 60 style: raw stylize: 150 weird: 1200

profile Your Global Profile



A modern classroom with lots of natural light, wooden floors, and tables setup for group work with a smartboard at the front of the room

chaos: 60 style: raw stylize: 150 weird: 1200

profile Your Global Profile



A modern science classroom with lots of natural light, wooden floors, and tables setup for group work with a smartboard at the front of the room. Exposed ceilings and ductwork.

chaos 60 style raw stylize 150 weird 1200

profile Your Global Profile



A modern science classroom with lots of natural light, wooden floors, and tables setup for group work with a smartboard at the front of the room. Exposed ceilings and ductwork. Red chairs

chaos 30 style raw stylize 150 weird 400

profile Your Global Profile



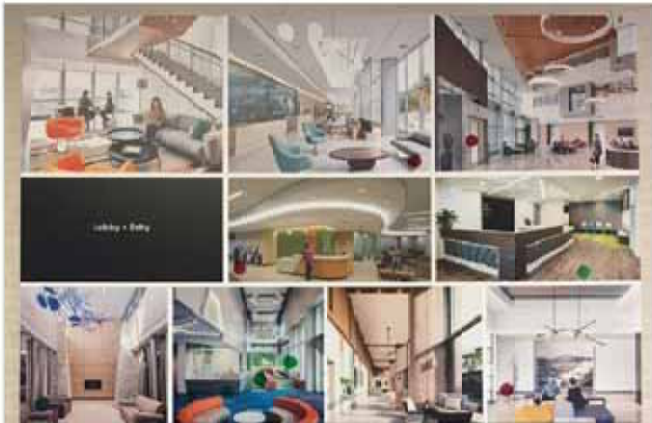
~~chaos~~ floor to ceiling glass storefront with a view of a lake in the background



LOBBY VISION BOARDS:



7.26.2018 Session



8.15.2018 Session

## LOBBY + ENTRY

Comments included:

- Like Openness, Spaciousness, “Room to Breathe” – don’t want a space that feels enclosed
- Like Natural Woods and Stone
- Want a Soft Space that feels Neutral Zone that feels Safe and Secure
- Dislike Clinical Feel or Approach to the Check In
- Would like the idea of a “quiet” room -
- Don’t want too much color in this area
- Compact and secure feeling spaces
- Safety concern-I am exposed feeling- wants smaller scale
- Want space to be homey and intimate
- Wood elements, calming vibes
- Looking for comfortable furniture
- Separate group seating areas in lobby





ChatGPT

**Key Design Elements:**

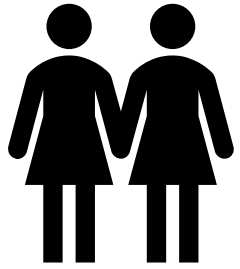
- Natural Materials:** Incorporate **wood tones and stone** to create warmth and a grounding effect.
- Soft, Neutral Colors:** Use **soothing hues** to maintain a welcoming and tranquil atmosphere.
- Comfortable, Flexible Furniture:** Seating should be **movable and varied**, avoiding long benches or all couches to allow for semi-private seating.
- Semi-Private Areas:** Utilize **partitions carefully** to maintain openness while offering privacy and reducing feelings of exposure.
- Quiet/Relaxation Room:** A designated area where clients can **step away from others** and decompress.
- Security Without Intimidation:** The check-in and security area should feel **discreet and integrated**, avoiding a stark or overly rigid setup.
- Kid-Friendly Space:** A dedicated children's area within the waiting space.
- Soothing Visual Interest:** Elements like a **water feature (if safe), natural views, or artwork** to provide a calming distraction.
- Outdoor Respite Areas:** A secured, **green space with trees, benches, and possibly a covered area** for employees and clients, including those with pets.
- Walking Path/Labyrinth:** A **tranquil walking area** for thinking, pacing, or relaxation.



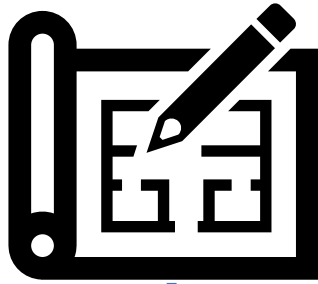
Midjourney



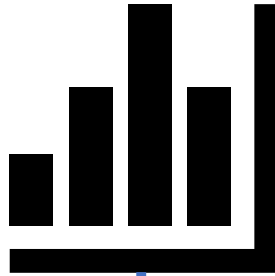
HUMAN INPUT



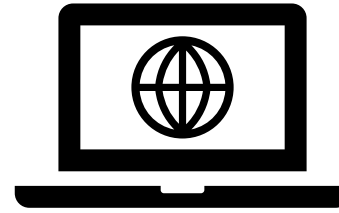
STRATEGIC PLANS



SURVEY DATA



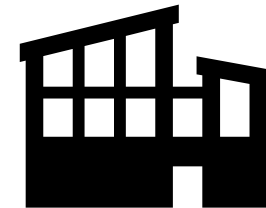
WEBSITES/ARTICLES



NotebookLM



IMAGE LIBRARY



PRELIMINARY DESIGN



Midjourney



New buildings will likely incorporate the "**modified Georgian**" architectural style while adhering to **new Design Guidelines**. Some districts, like Research, might feature a more **eclectic style**, and prominent buildings may include **distinctive features**.

# Image Library of Existing Buildings







# Questions?

Francis Wilmore, AIA, A4LE, LEED AP BD+C  
[Francis.Wilmore@kktarchitects.com](mailto:Francis.Wilmore@kktarchitects.com)

