



Resilience Rising:

The Journey of a Community Transformed

HKS



- 01 Introduction
- 02 A Historic Community Transformed
- 03 Design Process - Resilience Required
- 04 The Learning Journey
- 05 From Journey to Arrival





William "Kelly" Horn
Arlington ISD



Mariana Santiago
HKS



O. Wayne Reynaud
HKS

A Historic Community Transformed

HKS

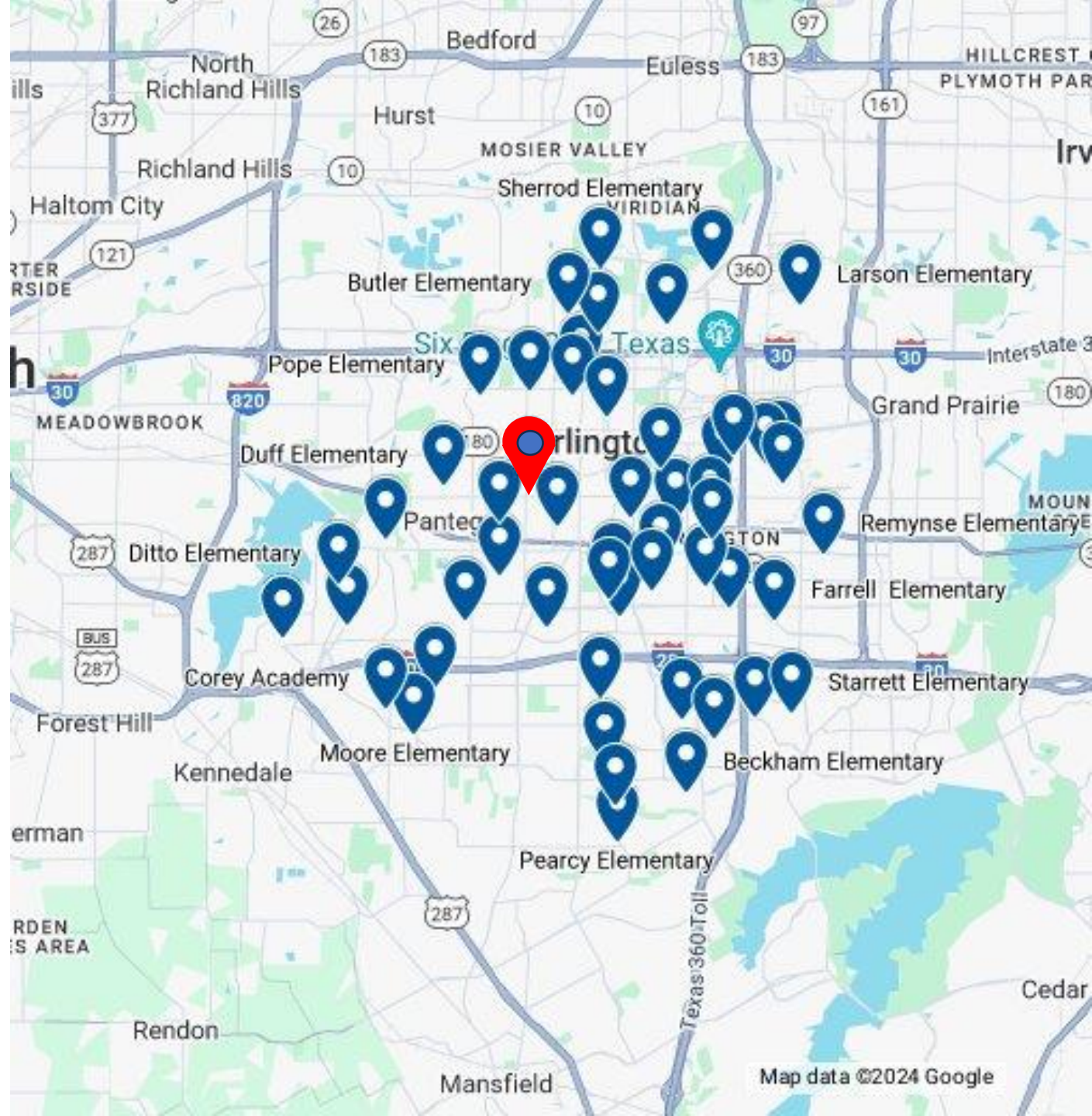


Arlington History

The community economic system has been historically supported by local industries like the General Motors plant, these schools have long served working-class families for generations.



Arlington Independent School District Campuses



Arlington ISD Enrollment

10 HIGH SCHOOLS

64,062 STUDENTS ENROLLED
49% FEMALE 51% MALE

13 MIDDLE SCHOOLS

75 SCHOOLS
16 STUDENTS PER TEACHER

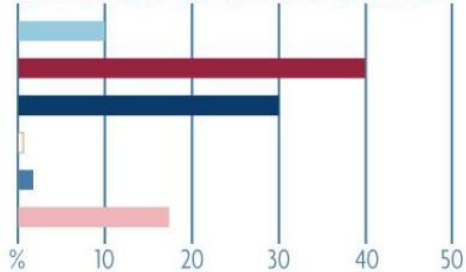
52 ELEMENTARY SCHOOLS

ENROLLMENT DEMOGRAPHICS

- BLACK
- WHITE
- HISPANIC
- INDIAN
- MULTIRACIAL
- ASIAN

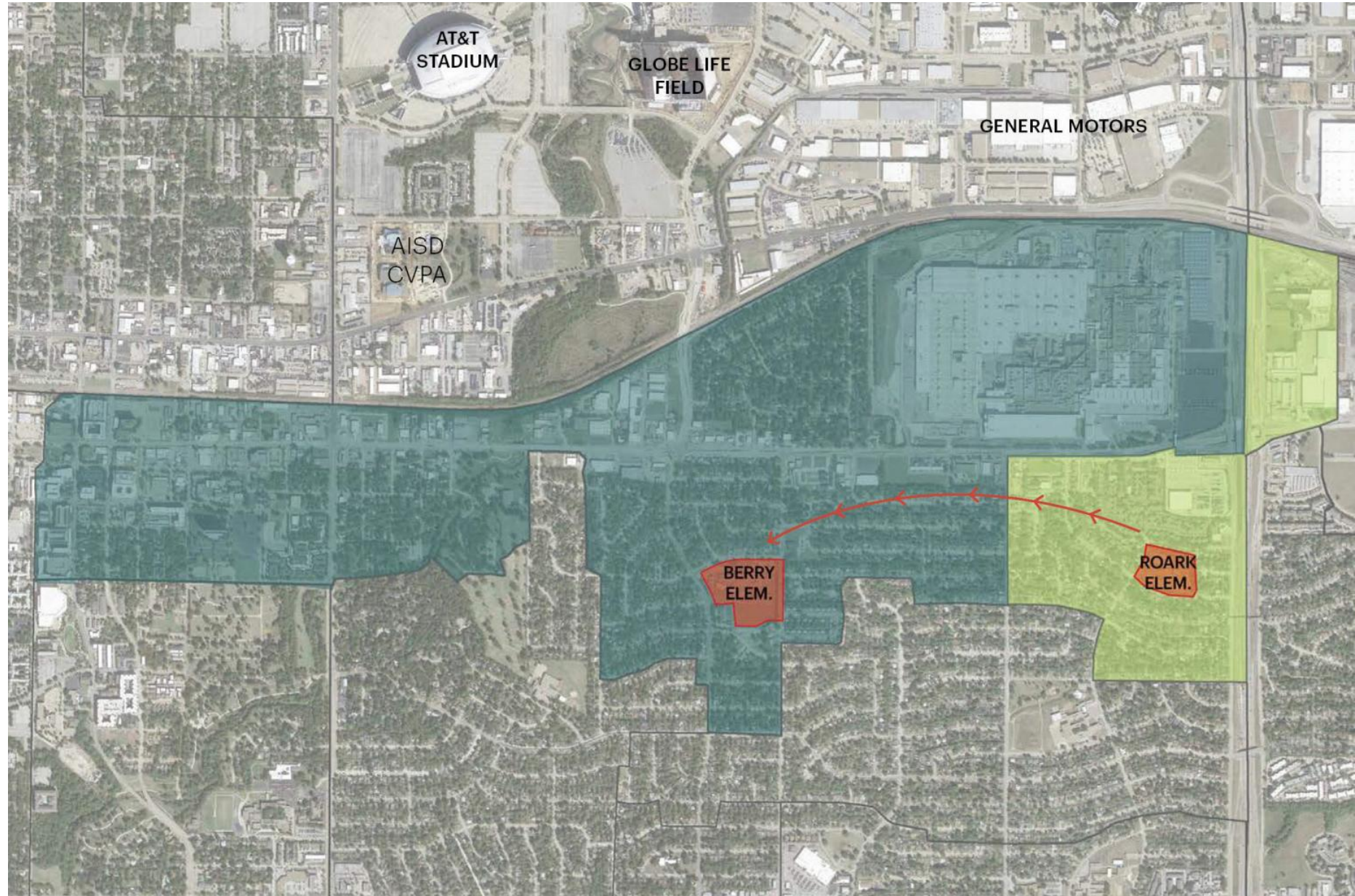


ENROLLMENT IN GIFTED PROGRAMS



**C. B. Berry
Elementary School**
Attendance Zone

**Roark
Elementary School**
Attendance Zone



Design Process - Resilience Required

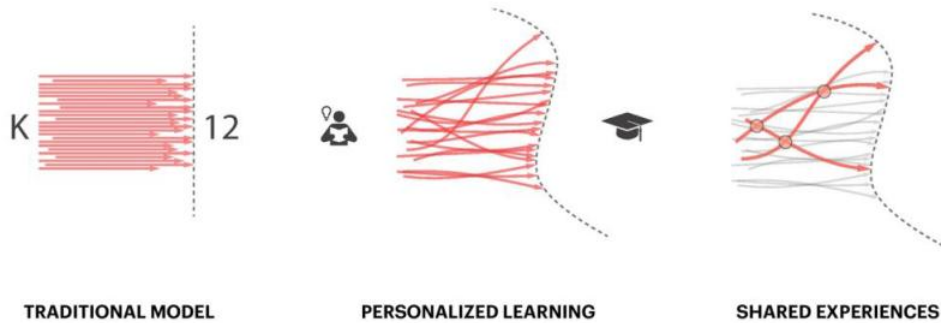
ARLINGTON ISD - NEW BERRY ELEMENTARY SCHOOL

		2020												20
		JAN	FEB	MAR	APR	MAY	JUN	JUL	AUG	SEP	OCT	NOV	DEC	
PRE- DESIGN														
Design Charrette 1 - Executive Admin (Super + Cabinet)	May 6, 2020 1:30PM													
Design Charrette 2 - Principal, key faculty/coordinators	May 20, 2020 1:30PM													
Design Charrette 3 - Teachers and Students	June 3, 2020 1:30PM													
Design Charrette 4 - Parents - later in the day 4PM	June 10, 2020 4:00PM													
SCHEMATIC DESIGN														
Design review meeting with AISD	June 11, 2020													
Design review meeting with AISD	Jul_2020													
Pricing package to cost estimator	Aug_2020													
Cost estimator probable cost summary	Aug_2020													
Schematic design review with AISD	Aug_2020													
Design presentation for the Board to AISD	Sep_2020													
Design presentation to the Board	September 17, 2020													
DESIGN DEVELOPMENT														
Design review meeting with AISD	Oct_2020													
Design review meeting with AISD related to MEP	Oct_2020													
Design review meeting with AISD related to Technology	Oct_2020													
Design review meeting with AISD: Kitchen/ Food service	Oct_2020													
City Planning review meeting	Oct_2020													
Pricing package to cost estimator	Nov_2020													
Cost estimator probable cost summary	Dec_2020													
Design Development review with AISD	Dec_2020													

During COVID...

The project navigated unprecedented challenges posed by the COVID-19 pandemic. This was the first Pandemic, ZOOM Community, Dual Language Schematic Design Charette that HKS or Arlington ISD had experienced.

How do we not lose the important parts of the Conversation?



COMMUNITY



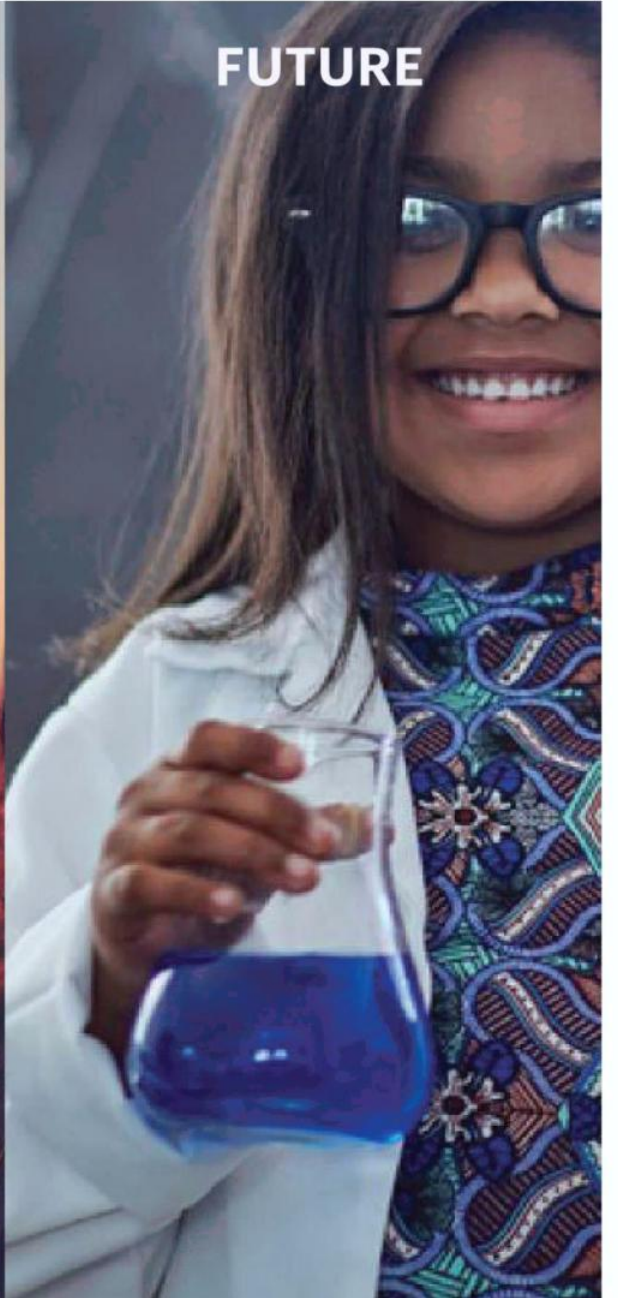
RESILIENCE



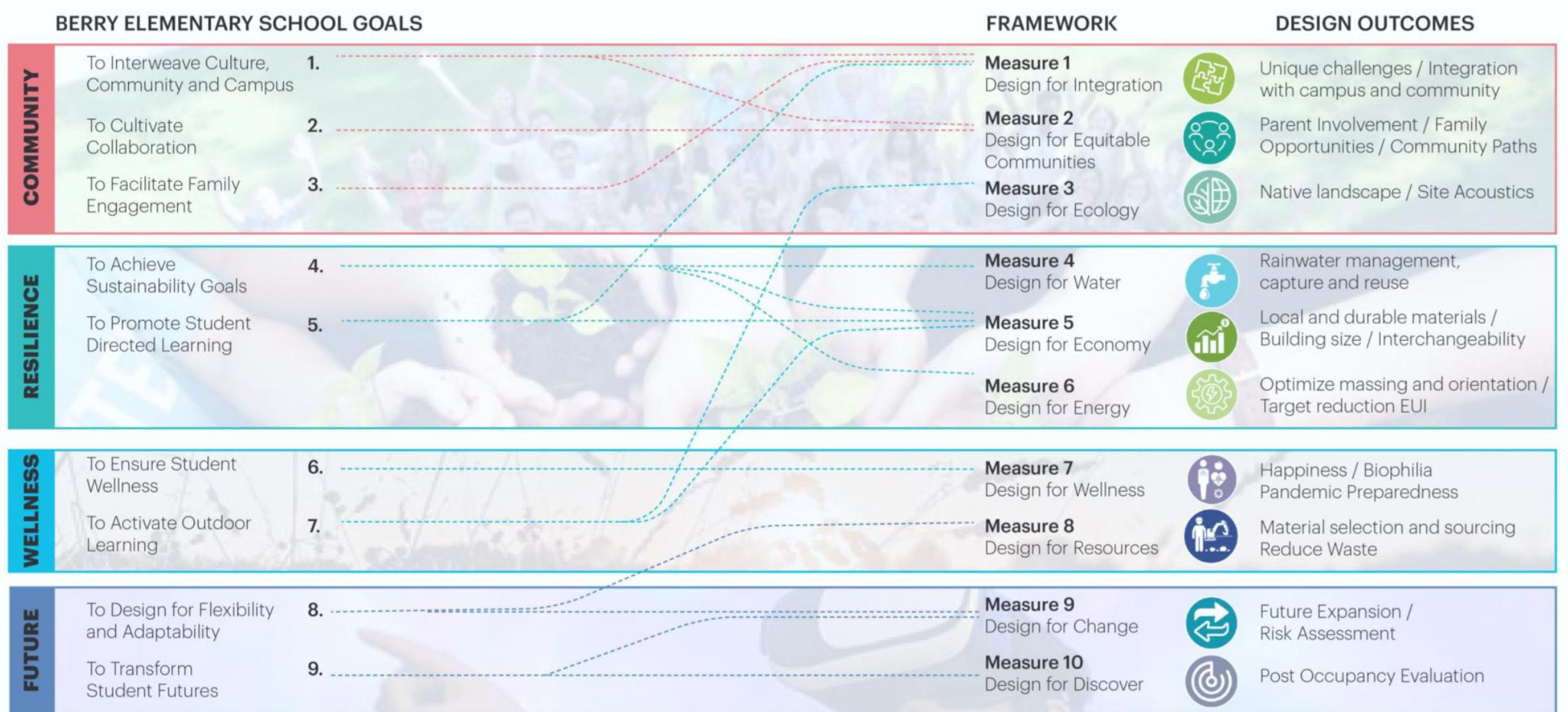
WELLNESS



FUTURE



Framework for Design Excellence





JOYCE STREET

JOYCE STREET

GLENHAVEN STREET

SITE AREA
13.2 ACRES

PROPOSED BUILDING AREA
9.5 ACRES

NEW YORK AVENUE

BUILDING AREA

SHARON STREET

(AISD)
ARLINGTON II
CHILD CARE
CENTER

DETENTION
BASIN

LEACREST STREET

AISD DROP OUT
PREVENTION
CENTER

GRACE STREET

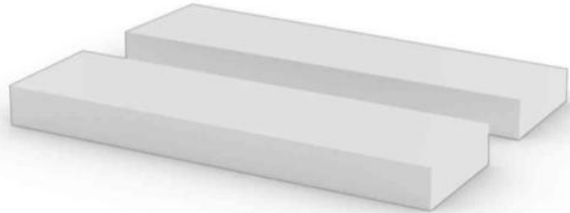
BROWNING DRIVE

GRACE STREET

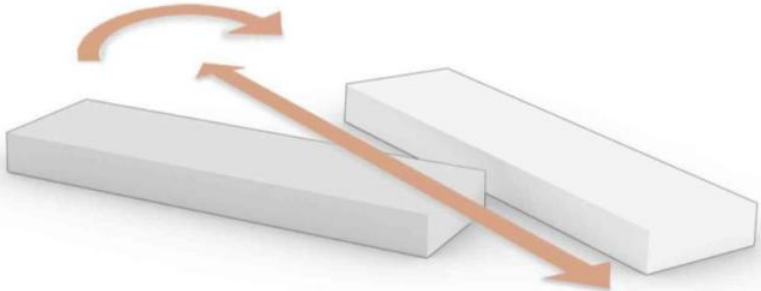
MELROSE STREET

0' 30' 60' 120' 240'

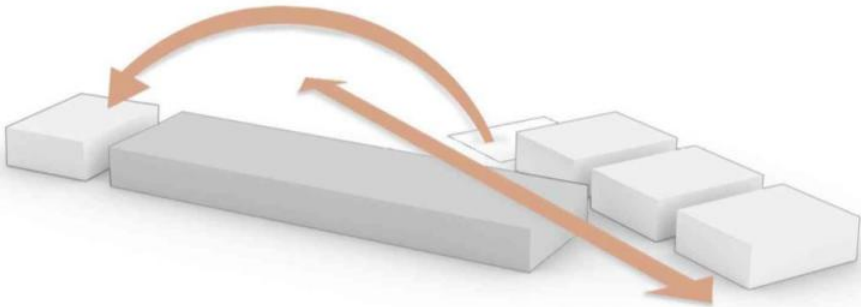
Concept Diagrams



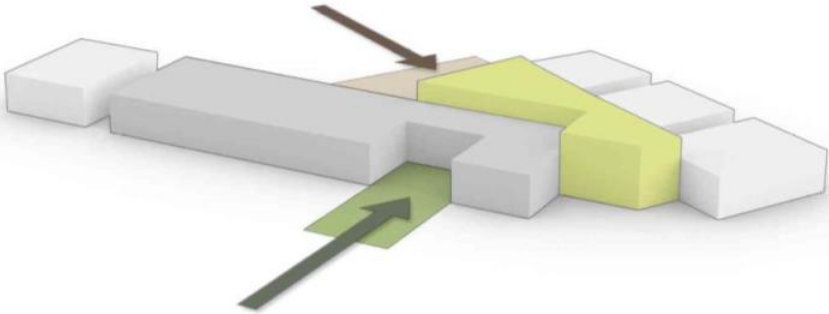
PROGRAM



LEARNING PATHWAYS



PUBLIC / PRIVATE



LEARNING CONVERGENCE



The Learning Journey

HKS



THE LEARNING JOURNEY

Journey

passage or progress from one stage to another

What inspires the word **Journey**?



A Road



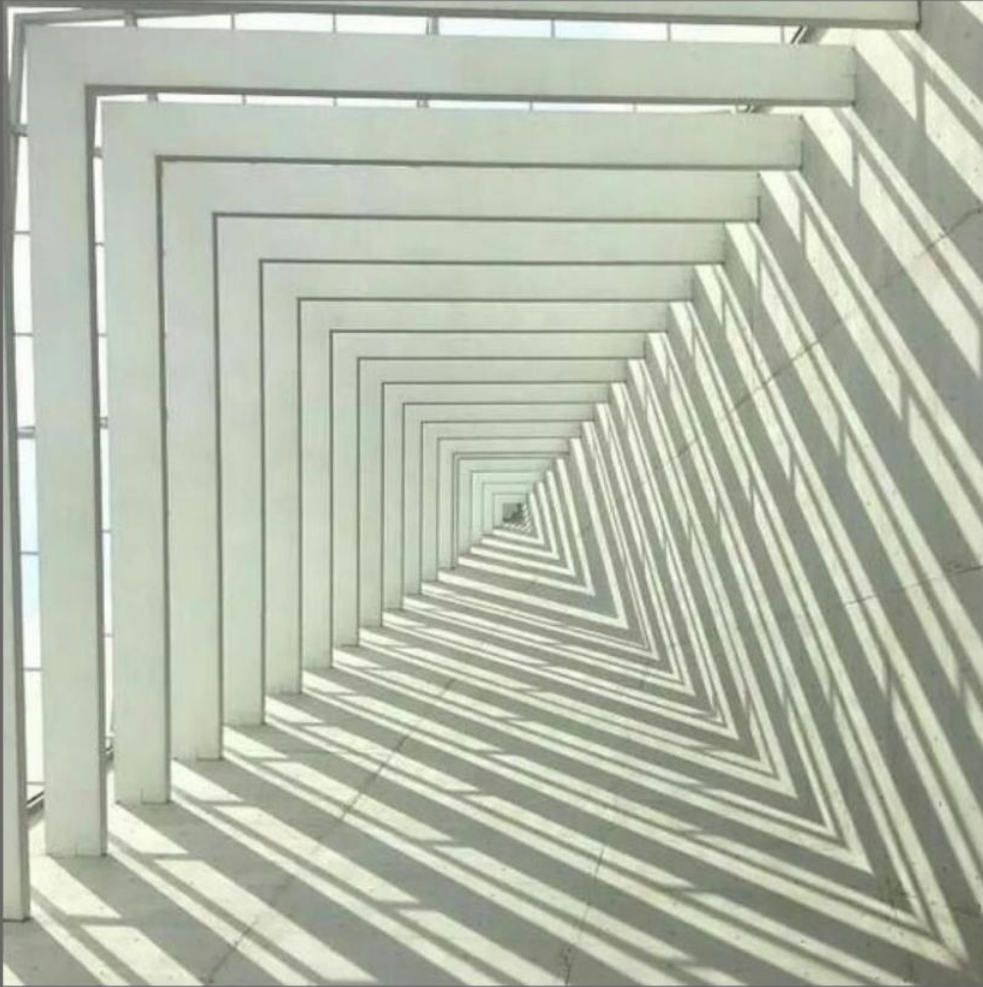
Open Fields



Nature



Technology



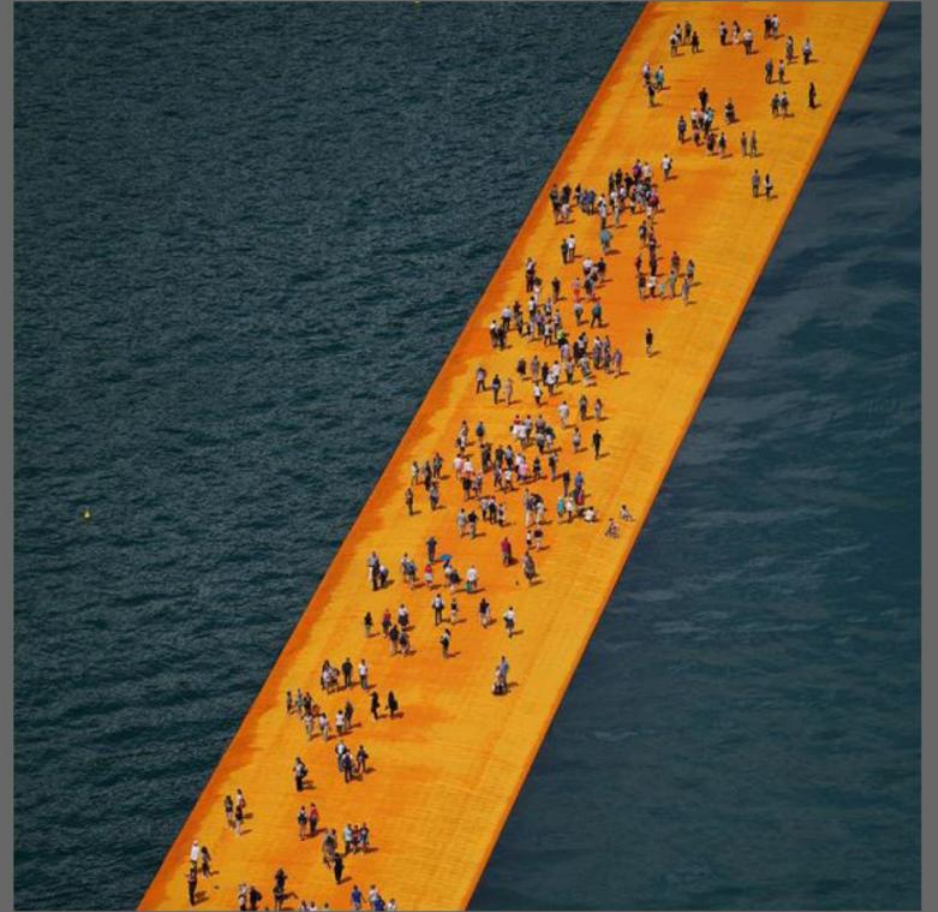
Known



Unknown

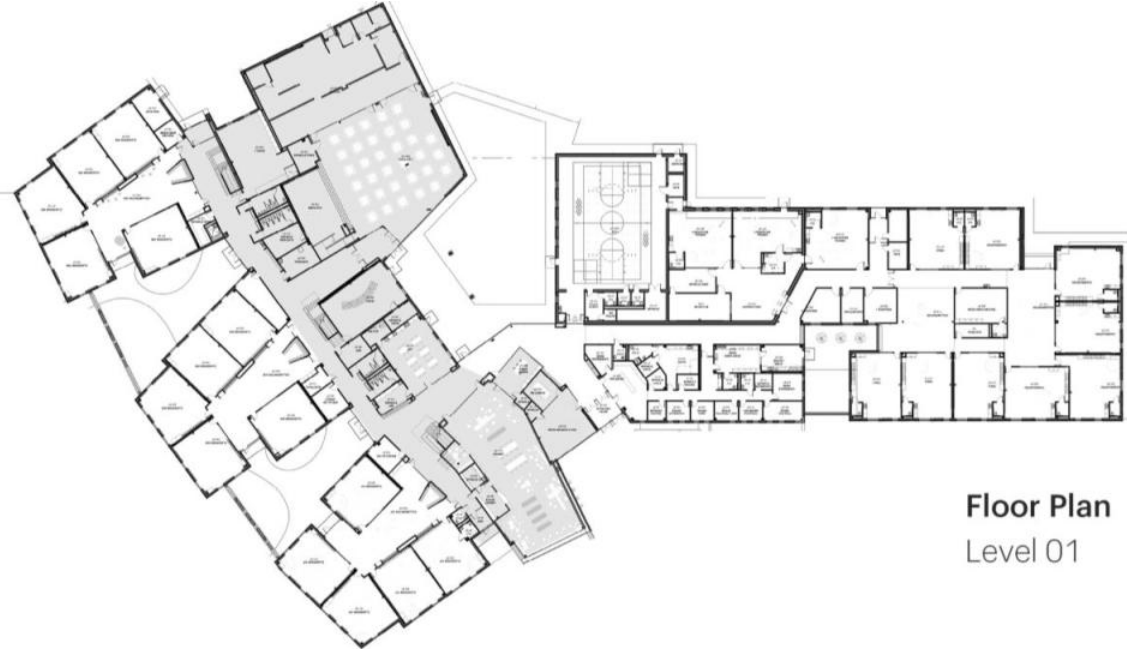


The Destination

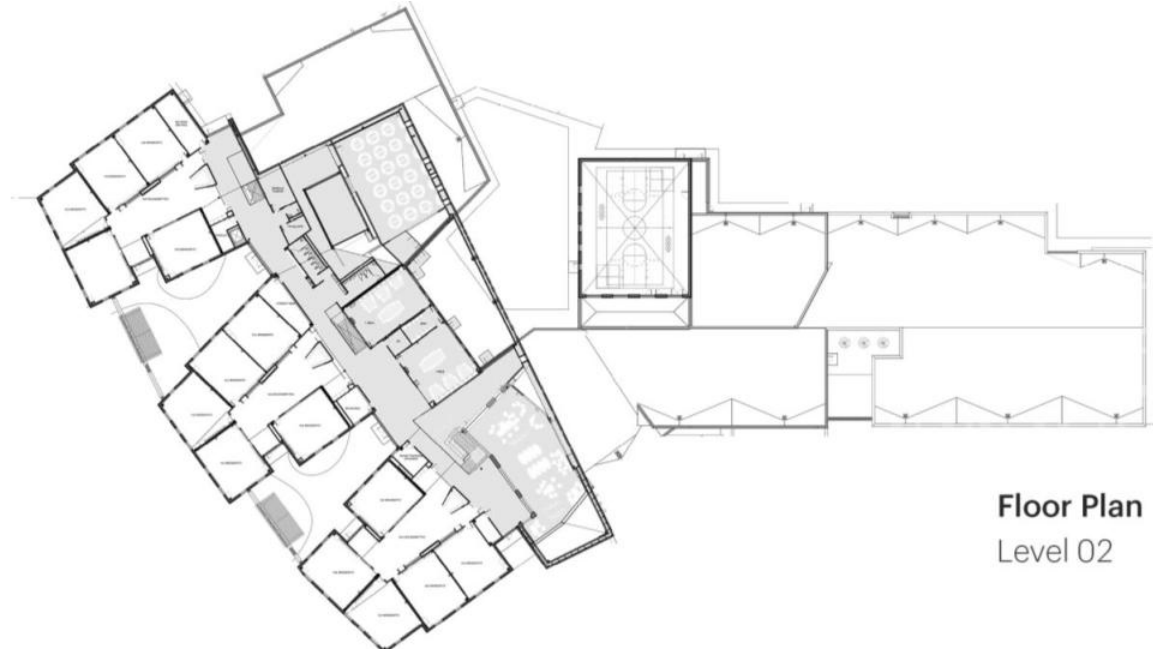


The Journey





Floor Plan
Level 01



Floor Plan
Level 02



From Journey to Arrival



EVERY DAY THEIR JOURNEY BEGINS

HKS



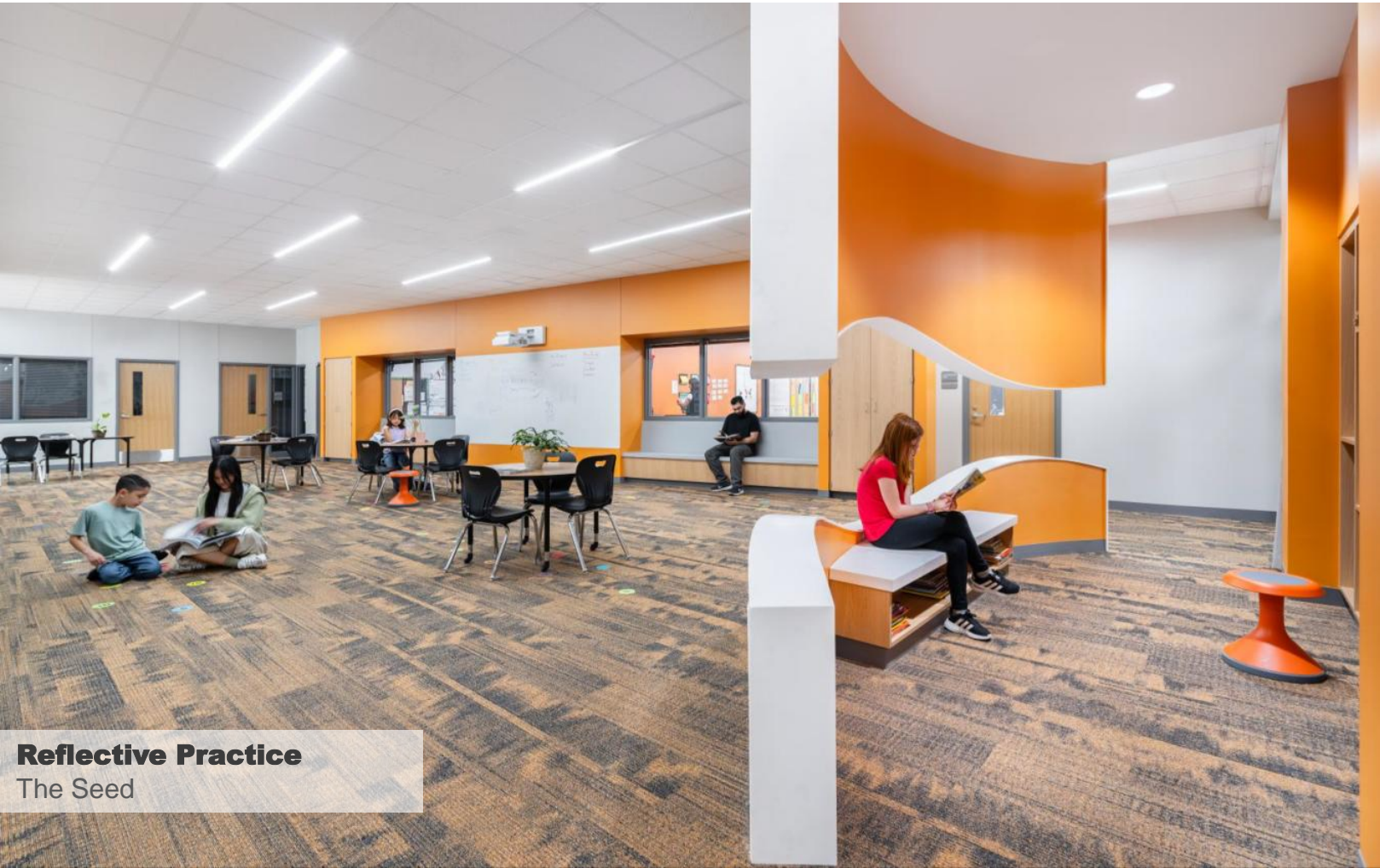
Arlington
INDEPENDENT SCHOOL DISTRICT
More Than a Remarkable Education

Learning Courtyard
Collaboration Space

While a corridor merely serves as a passageway from one point to another, a learning pathway symbolizes a deliberate and structured progression towards enlightenment, proficiency, and self-discovery.



WHAT MAKES IT A “LEARNING PATHWAY” AND NOT JUST A CORRIDOR?



PREK
Collaboration Space



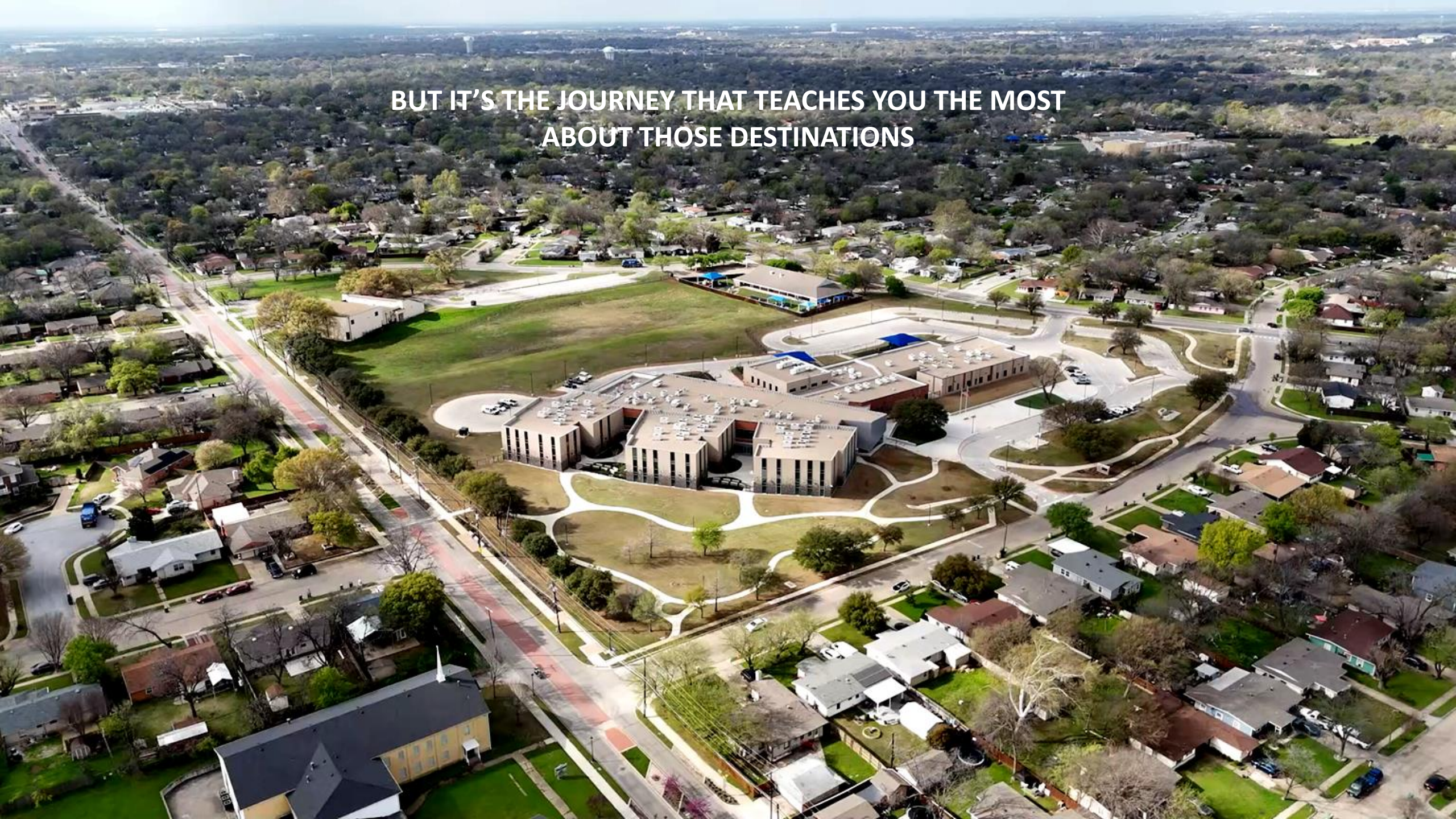
Community Events
Cafeteria



Learning Convergence
Media Center & Library



**BUT IT'S THE JOURNEY THAT TEACHES YOU THE MOST
ABOUT THOSE DESTINATIONS**





THANK YOU

Questions?

HKS

