

A COMPREHENSIVE APPROACH TO THE **CHALLENGES & OPPORTUNITIES** OF OUR TIME

STEVEN BINGLER & BAHAREH JAVADI



concordia
architecture | planning | community | engineering

AGENDA

CLIMATE CHANGE

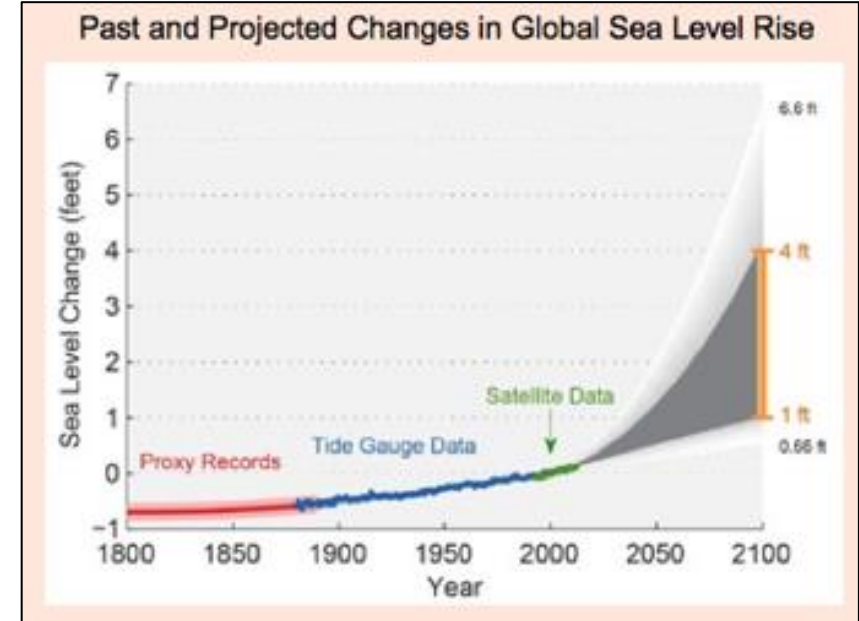
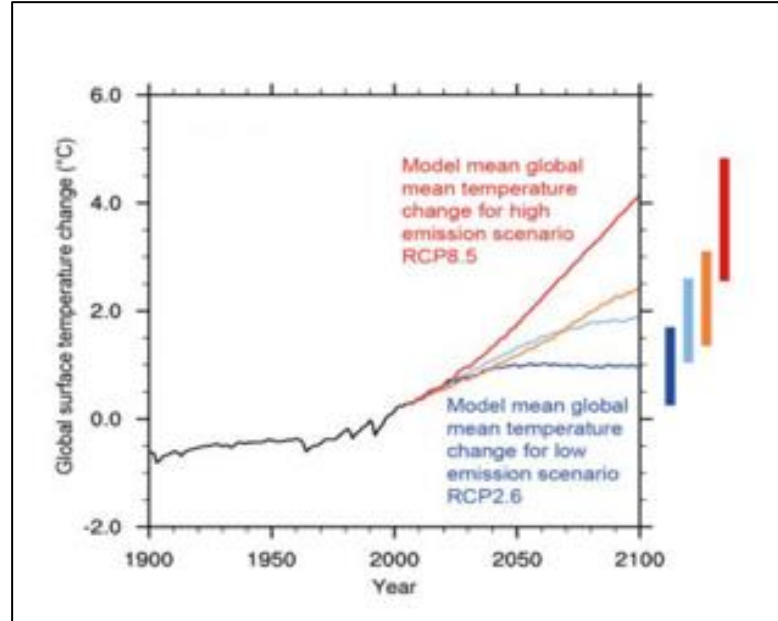
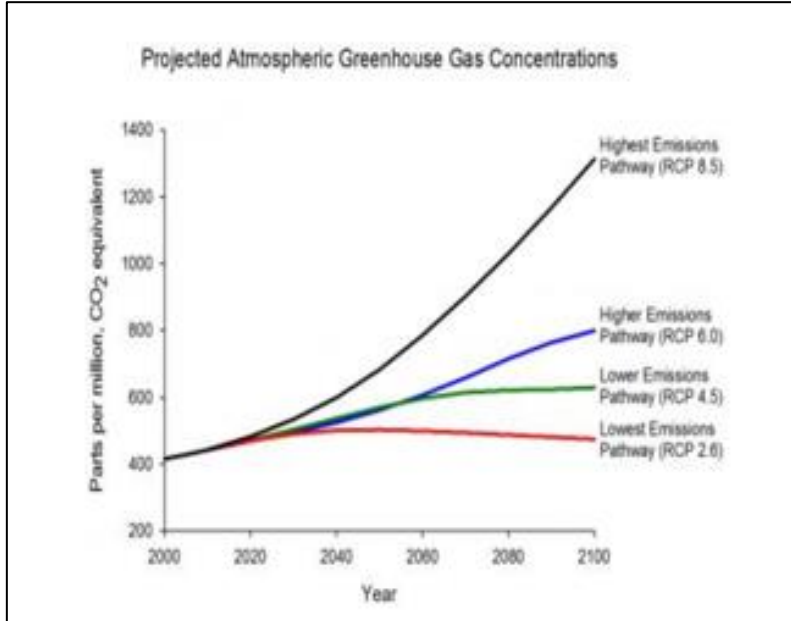
COMMUNITY SCHOOLS & REILIENCE HUBS

NEW PLANNING OPPORTUNTIES

Q&A

CLIMATE CHANGE

CLIMATE CHANGE



SEA CHANGES

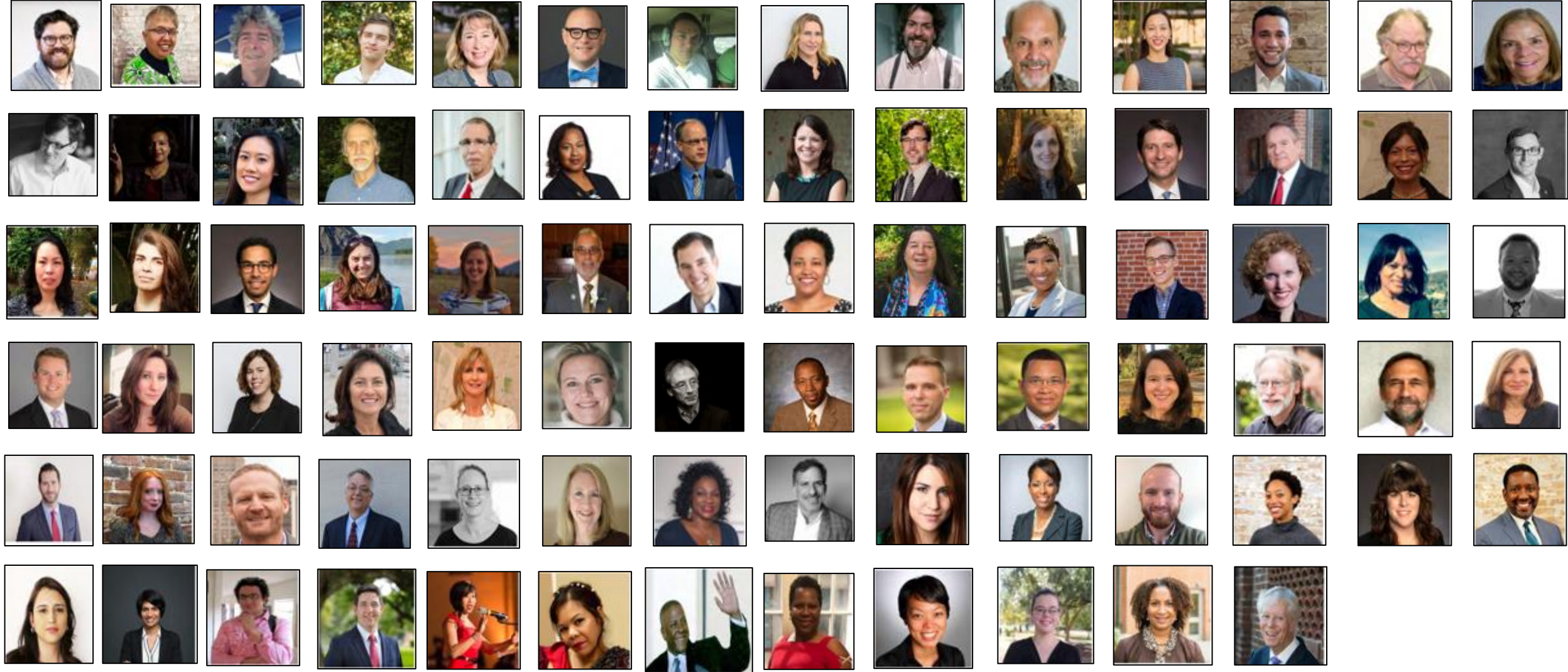
COMMUNITY-CENTERED PLANNING IN AN ERA OF
HIGH RISK AND UNCERTAINTY

October 1, 2020
Final Report on the

GLOBAL TRANSFORMATION ROUNDTABLE
CONCORDIA LLC AND THE UNIVERSITY OF NEW ORLEANS

PLANNING FOR CLIMATE RISK

GLOBAL TRANSFORMATION ROUNDTABLE



GLOBAL TRANSFORMATION ROUNDTABLE

Develop foresight by understanding the major existing and emerging [challenges](#) to enhancing livelihoods and wellbeing due to climate change.

- Arm residents with [trustworthy](#) information
- Data needs depth and breadth, and as much bottom-up [qualitative content](#) as top-down statistics.
- [Understand intersections](#) of risk, economics, class, race, culture, housing, and a broad range of other issues impacted by increased risk.



GLOBAL TRANSFORMATION ROUNDTABLE

Create [strategies](#) for community-based responses to the impacts of climate change

- [Physical Strategies](#) – Options for remaining in place and a managed retreat from increasing flood risk.
- [Cultural Strategies](#) – Foster cultural bonds and patterns that reinforce sense of place, belonging, and mutual support networks.
- [Social Strategies](#) – Increasing risk is disproportionately impacting poorer communities with less resources to adapt or retreat. Address economic and racial inequality exacerbated by Climate Change.
- [Economic Strategies](#) – Optional Resettlement, “Resilience Hubs” investment in high-ground areas.
- [Organizational Strategies](#) – Foster bottom-up planning and resilience initiatives across a wide range of organizational networks.
- [Educational Strategies](#) – Increase knowledge of risk and alternatives for increased resilience or resettlement.

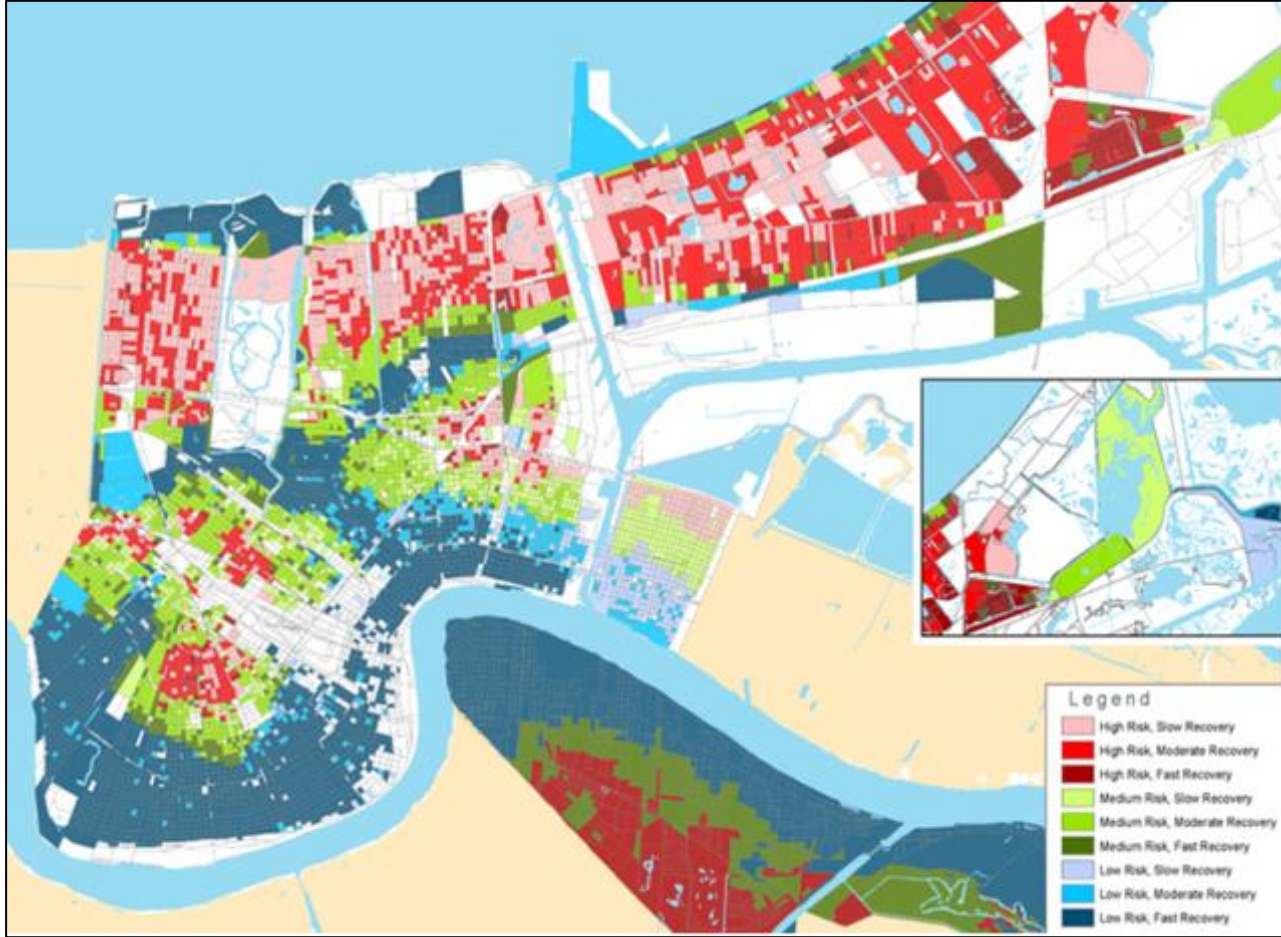




HURRICANE KATRINA, NEW ORLEANS, 2005

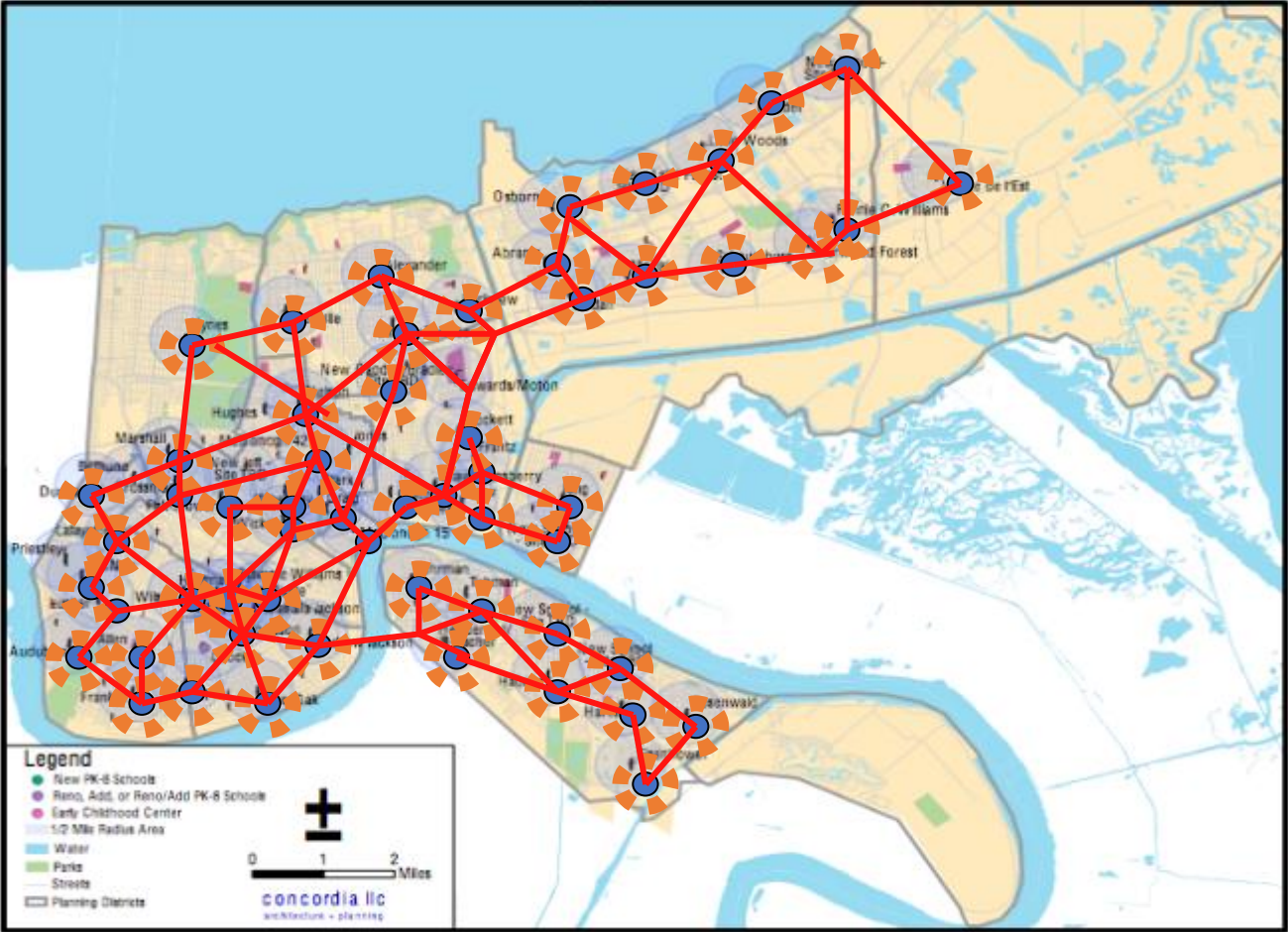


UNIFIED
NEW ORLEANS PLAN

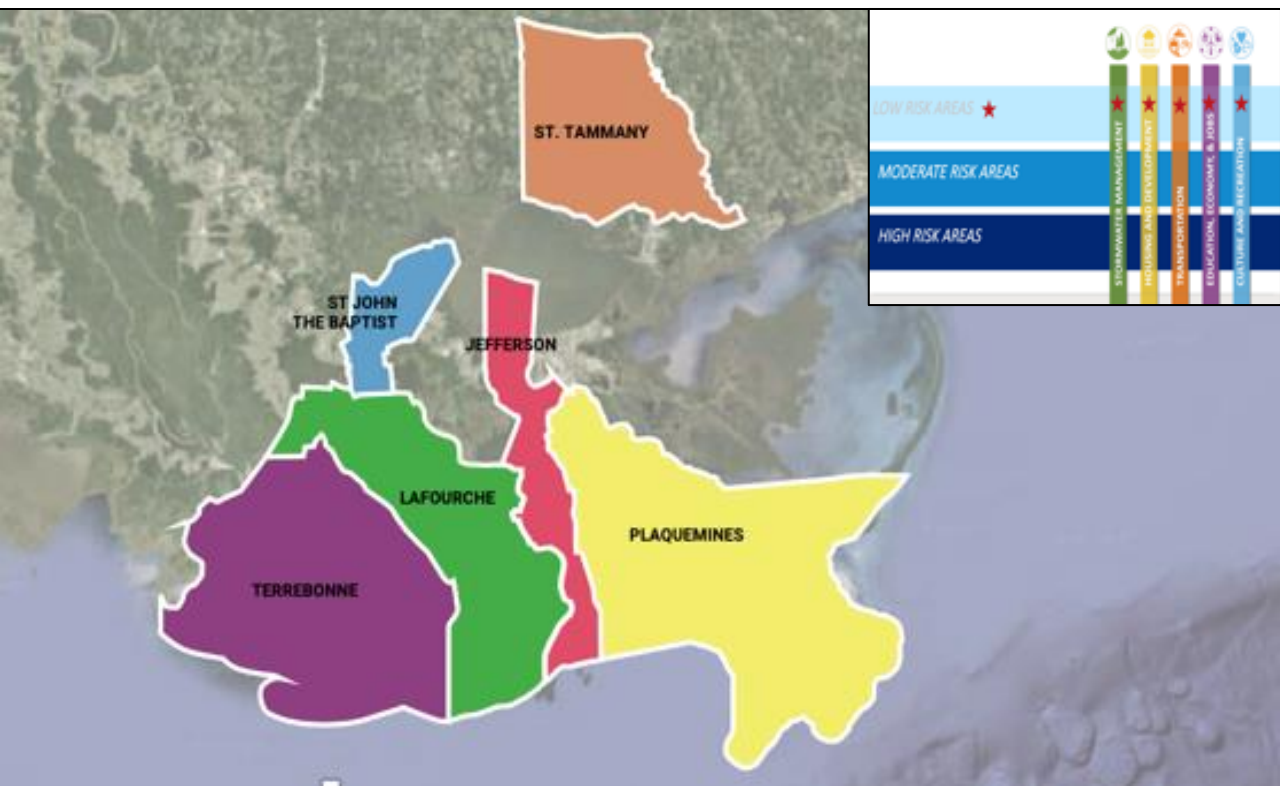


UNIFIED
NEW ORLEANS PLAN

PK-8 School Renovations & New Construction
with Half Mile Walking Radius

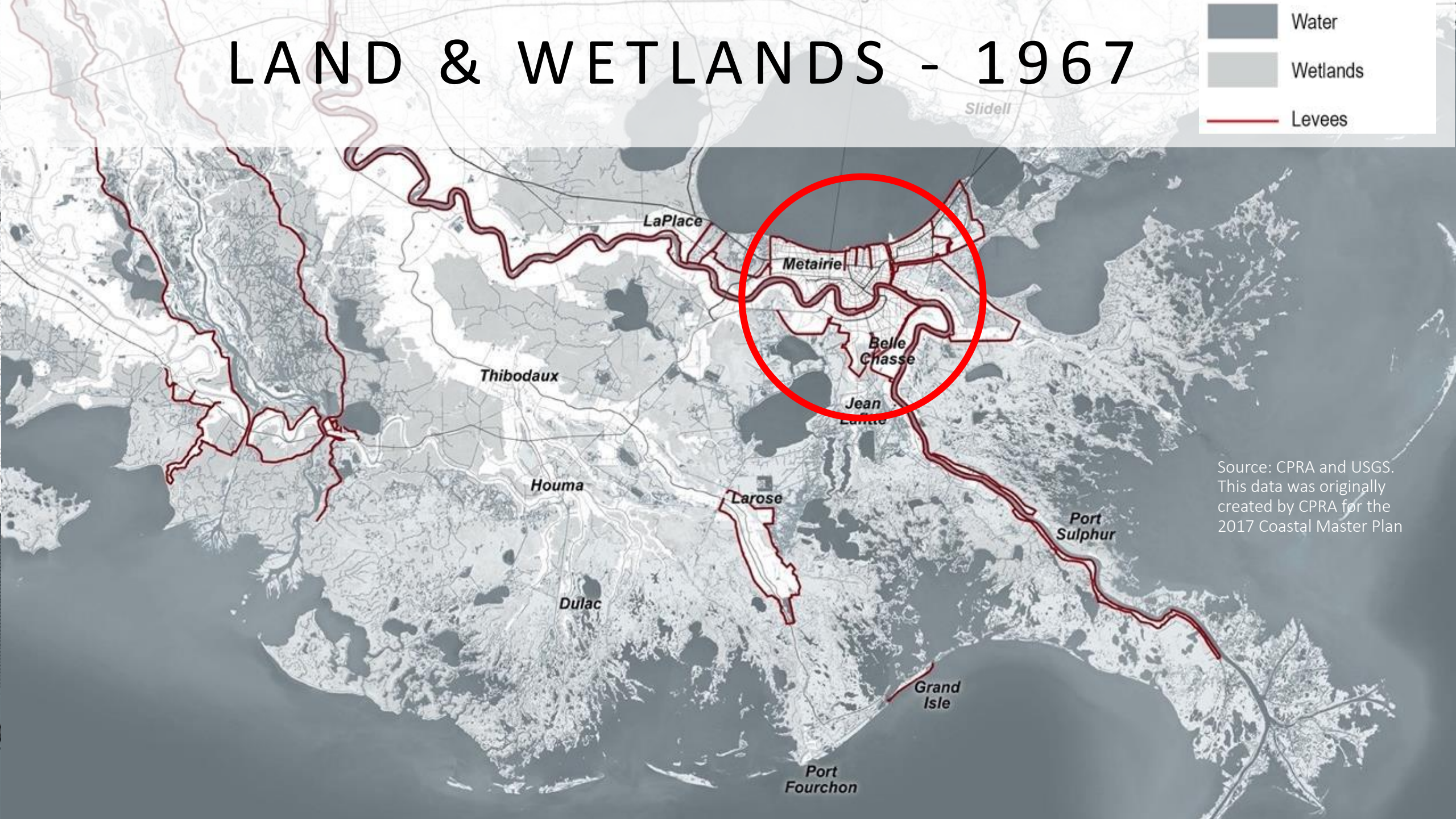
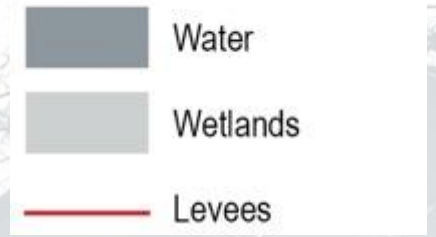


**NEW ORLEANS
SCHOOL FACILITIES
MASTER PLAN**



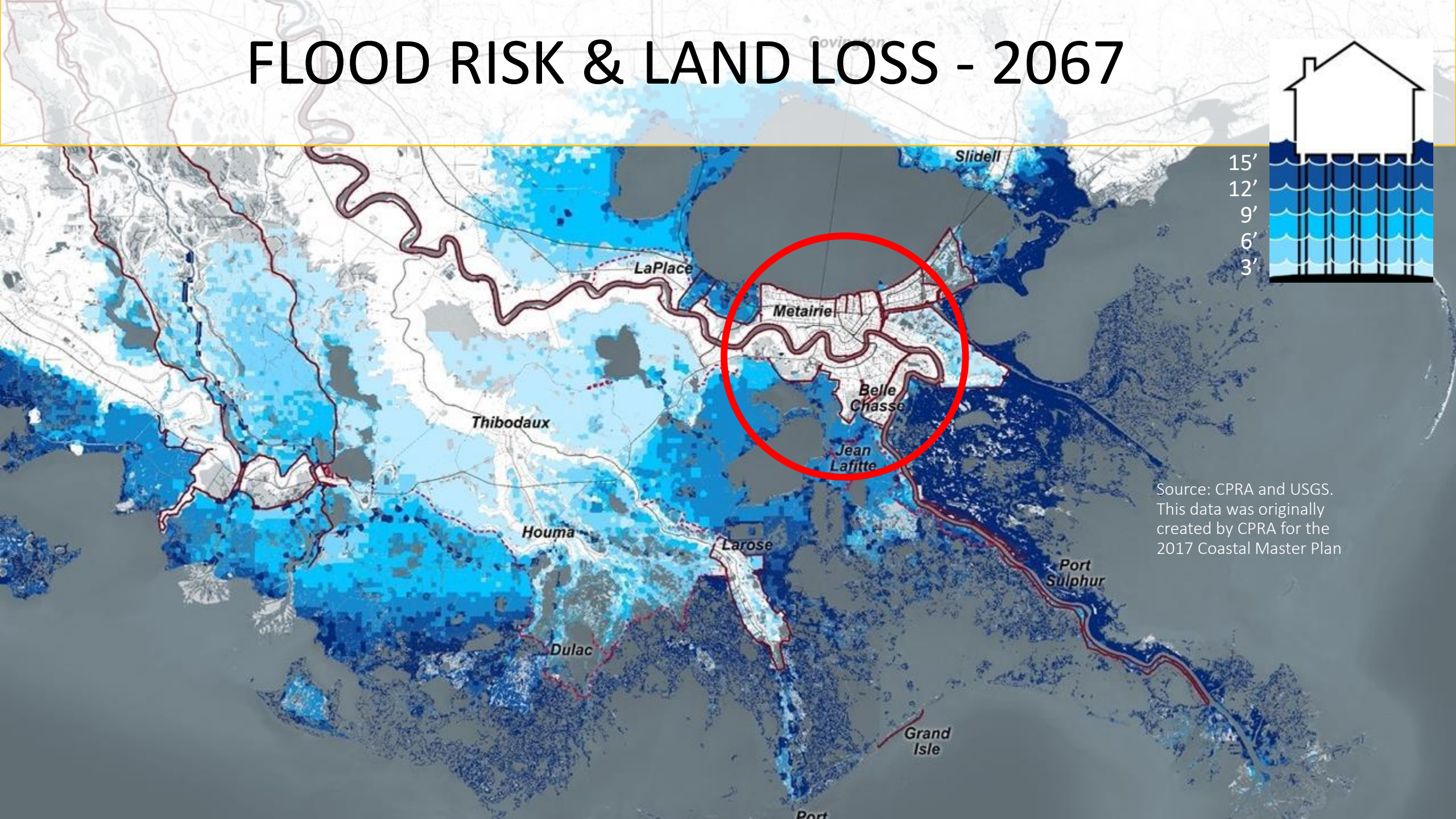
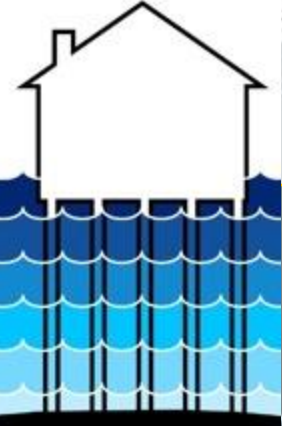
LOUISIANA'S STRATEGIC ADAPTATIONS FOR FUTURE ENVIRONMENTS

LAND & WETLANDS - 1967



Source: CPRA and USGS.
This data was originally
created by CPRA for the
2017 Coastal Master Plan

FLOOD RISK & LAND LOSS - 2067



Source: CPRA and USGS.
This data was originally
created by CPRA for the
2017 Coastal Master Plan

WHAT WE HEARD

“We need better education, a different way to educate people.”

“More education from trade schools. Can learn from a vocational trade.”

“Hideaway ponds and swamp tours- boost this industry in Gibson.”

LA SAFE

COASTAL LOUISIANA



Selected Portfolio

St. Tammany



Safe Haven Blue-Green
 Campus & Trails

St. John



Airline & Main Complete Streets

Dubourg Canal Park

Plaquemines



Harbor of Refuge

Mental Health & Substance Abuse
 Program

Jefferson



Gretna Resilience District Kickstart

Louisiana Wetland Education
 Center

Terrebonne



Buyouts for Permanent Resident
 Households

Lake Boudreaux Living Mitigation

Lafourche



Emerging Industry Business
 Incubator

Resilient Housing Prototype

LaPlace School Canal Park

LA SAFE – ST. JOHN THE BAPTIST PARISH

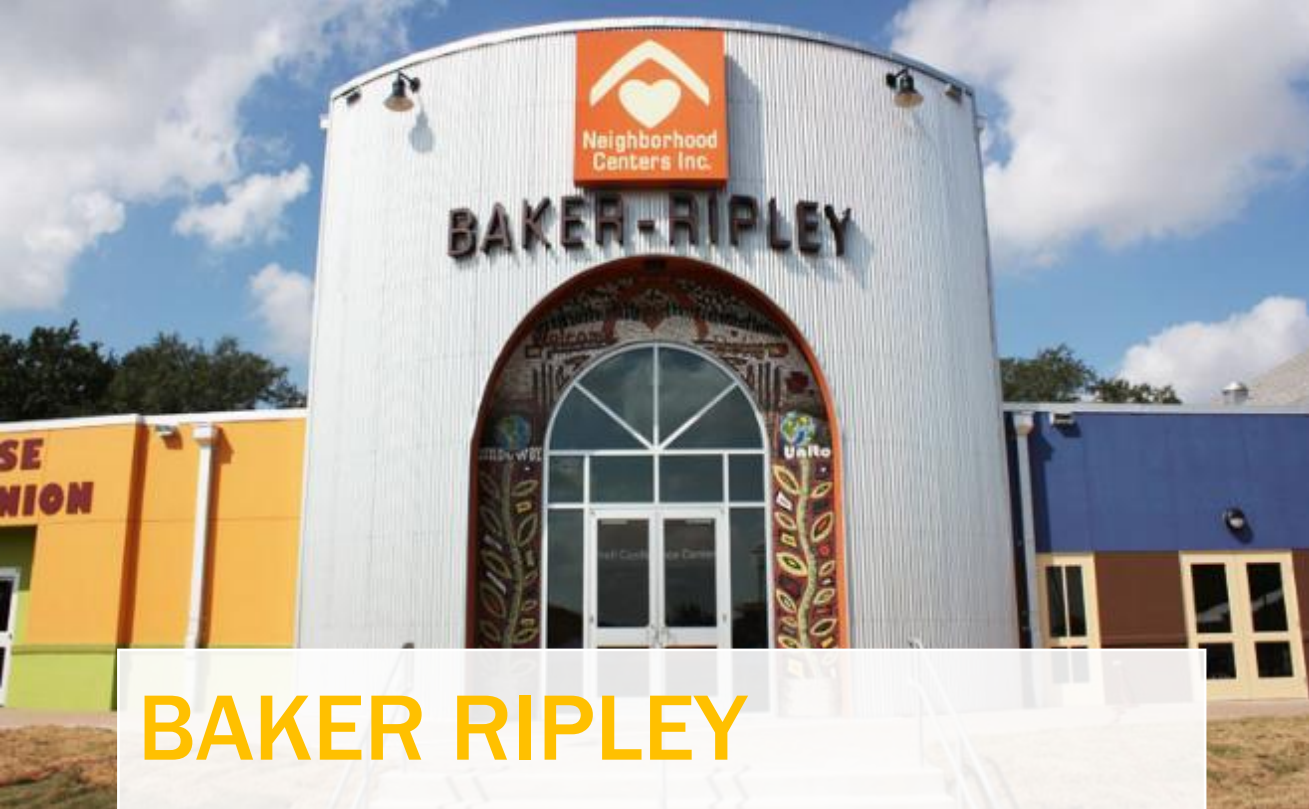


COMMUNITY SCHOOLS AS RESILIENCE HUBS

BAKER RIPLEY CENTER

HOUSTON, TEXAS





BAKER RIPLEY
NEIGHBORHOOD CENTER
HOUSTON, TX



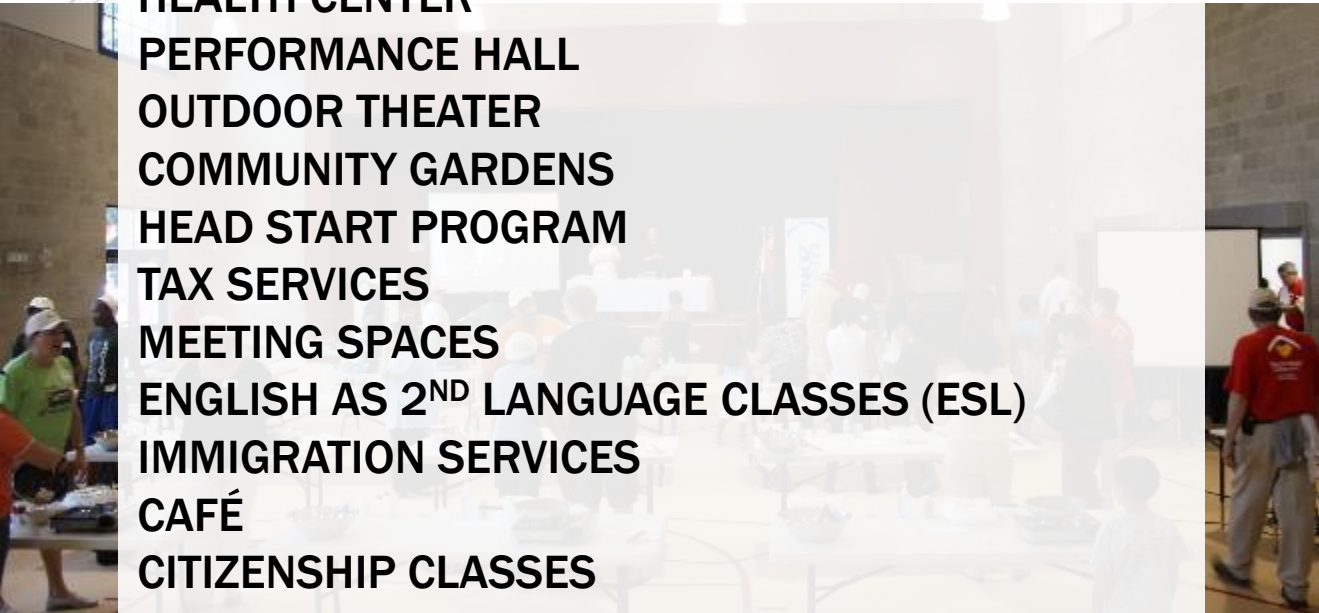


BAKER RIPLEY NEIGHBORHOOD CENTER

HOUSTON, TX

PROGRAMS & SERVICES OFFERED:

- PREK-5 SCHOOL
- CREDIT UNION
- HEALTH CENTER
- PERFORMANCE HALL
- OUTDOOR THEATER
- COMMUNITY GARDENS
- HEAD START PROGRAM
- TAX SERVICES
- MEETING SPACES
- ENGLISH AS 2ND LANGUAGE CLASSES (ESL)
- IMMIGRATION SERVICES
- CAFÉ
- CITIZENSHIP CLASSES



EMERYVILLE CENTER FOR COMMUNITY LIFE

EMERYVILLE, CALIFORNIA





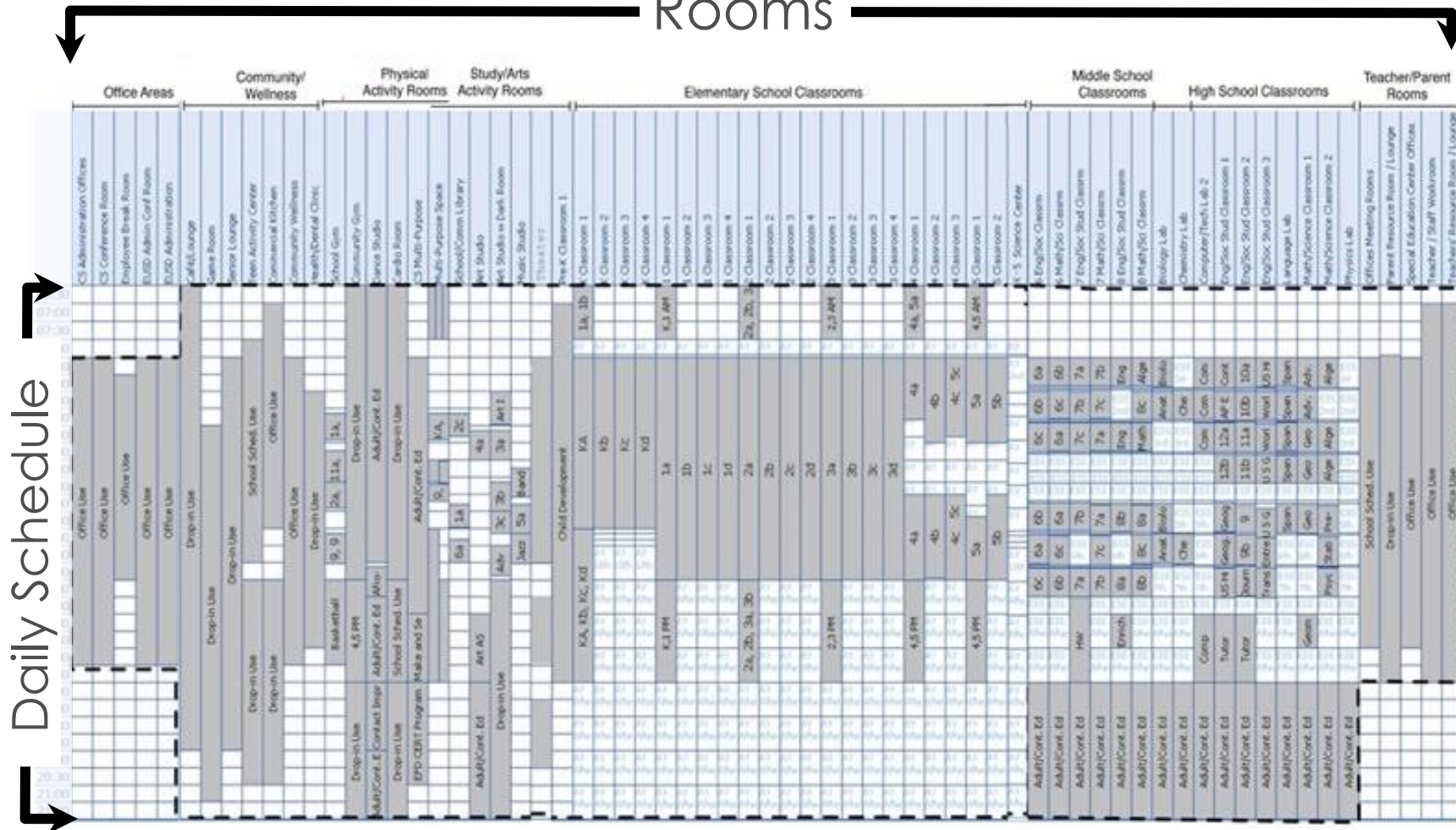
**EMERYVILLE CENTER FOR
COMMUNITY LIFE**
EMERYVILLE, CALIFORNIA



EMERYVILLE CENTER FOR COMMUNITY LIFE

EMERYVILLE, CALIFORNIA

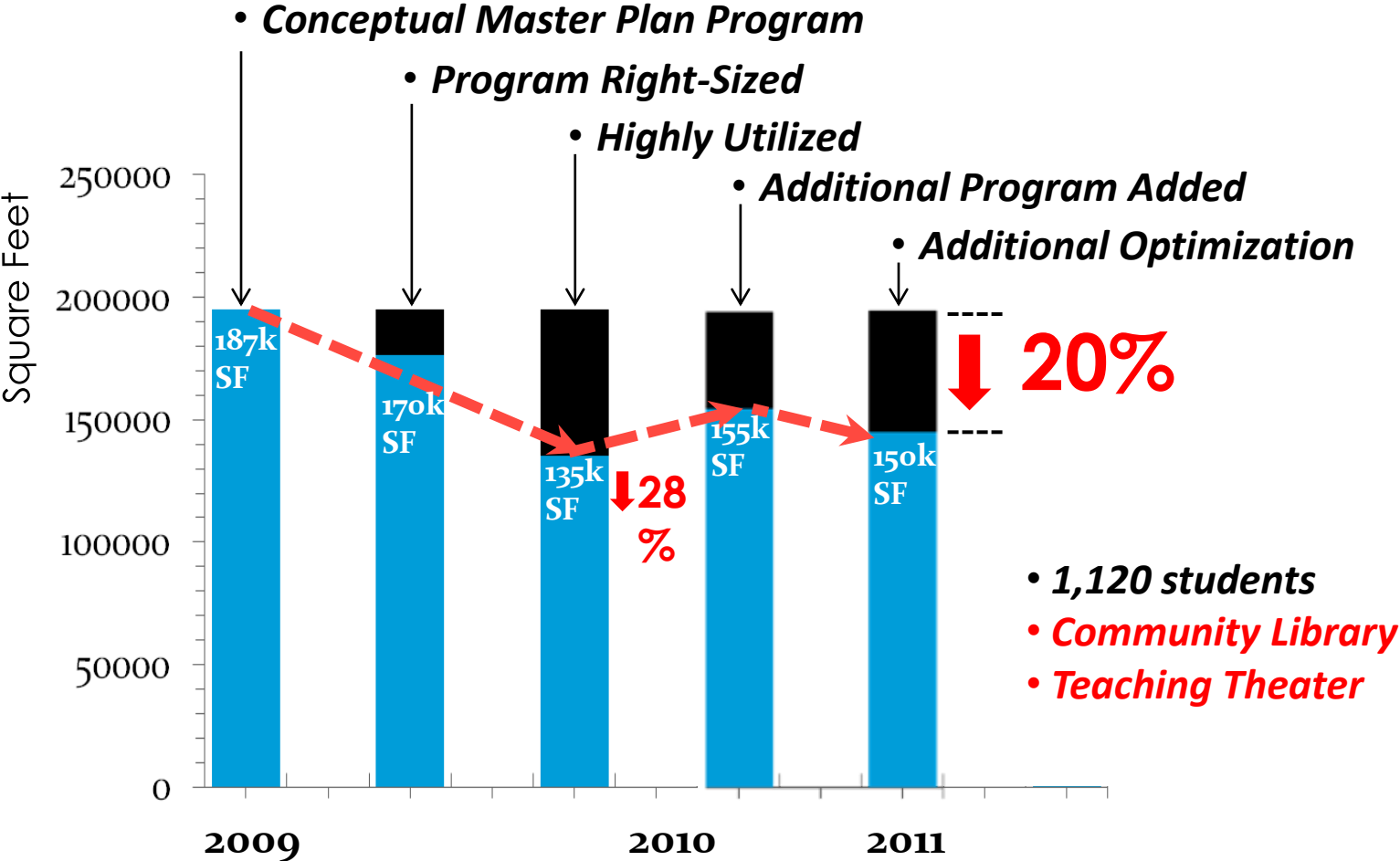
Rooms



July 2011 ~ 150,000 SF
57% Utilization

EMERYVILLE CENTER FOR COMMUNITY LIFE

EMERYVILLE, CALIFORNIA



CUBBERLY COMMUNITY CENTER

PALO ALTO, CALIFORNIA



CUBBERLY COMMUNITY CENTER

PALO ALTO, CALIFORNIA

- PAUSD Staff Housing
- Greendell School
- PAUSD Adult School
- PAUSD Offices
- Future PAUSD School
- Community Gardens
- Flexible Event Space



- Performing Arts Center**
 - Theater
 - Cafe
 - Maker Space
 - Music Class
 - Rehearsal Space
 - Woodshop
 - Upholstery Room
- Shared Use Gyms**
 - Playground
 - Pools
 - Tennis and Pickleball Courts
 - Dog Park
- Community Gyms**
- Visual Arts**
- Community Center**
 - Health & Senior Programs
 - Dance & Martial Arts
 - Educational Programs
 - Tenant Spaces
 - Hourly Rental Spaces
 - Admin Office

 SCHOOL USE

 SHARED USE

 COMMUNITY CENTER USE

CUBBERLY COMMUNITY CENTER

PALO ALTO, CALIFORNIA

BENEFITS OF SHARED COMMUNITY FACILITIES



Long term cost avoidance



Annual teacher salary equivalents



Annual elementary school energy equivalents



Annual household carbon footprint equivalents

LIVING SCHOOL

NEW ORLEANS, LOUISIANA

HIGH SCHOOL PROGRAMS:

- ATHLETIC FIELDS
- FABRICATION SHOP
- ARTS STUDIO
- MECHANICAL SHOP
- STUDENT KITCHEN & RESTAURANT
- COSMETOLOGY CENTER
- CLOTHING DESIGN LAB
- BAND ROOM & RECORDING STUDIO

COMMUNITY PROGRAMS:

- CREDIT UNION
- CHILDCARE
- HEALTH CLINIC
- GROCERY STORE
- FARMER'S MARKET
- FRUIT ORCHARD
- GREEN HOUSE



EXTERIOR PROGRAMS:

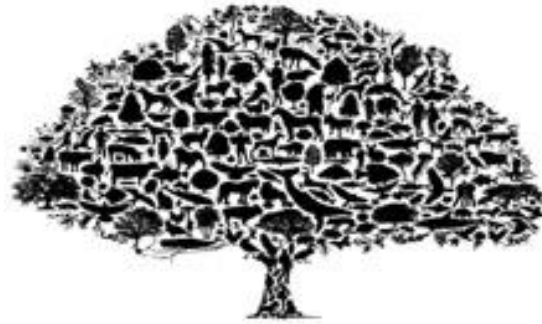
- WATER RECREATION
- NATURE TRAILS
- AMPITHEATRE & EVENT SPACE
- STUDENT FARMS
- STUDENT HOUSING
- COMMUNITY GREENSPACE
- PARKING LOT
- SISTER SCHOOL & ADJACENT COMMUNITY COMMERCIAL TENANTS

LIVING SCHOOL

CORE VALUES



EQUITY



**INTENTIONAL
BIODIVERSITY**



**DEMOCRATIC
COMMUNITY**



**REAL-WORLD
WORK**



LIVING SCHOOL: INDOOR/OUTDOOR LABS





LIVING SCHOOL: FLEXIBLE LEARNING SPACES





LIVING SCHOOL: EXTERIOR LEARNING SPACES



LIVING SCHOOL: STUDENT-GROWN FOOD





**LIVING SCHOOL:
CONNECTION TO
WATER**





LIVING SCHOOL: COMMUNITY COLLABORATIONS

**NEW PLANNING
OPPORTUNITIES**

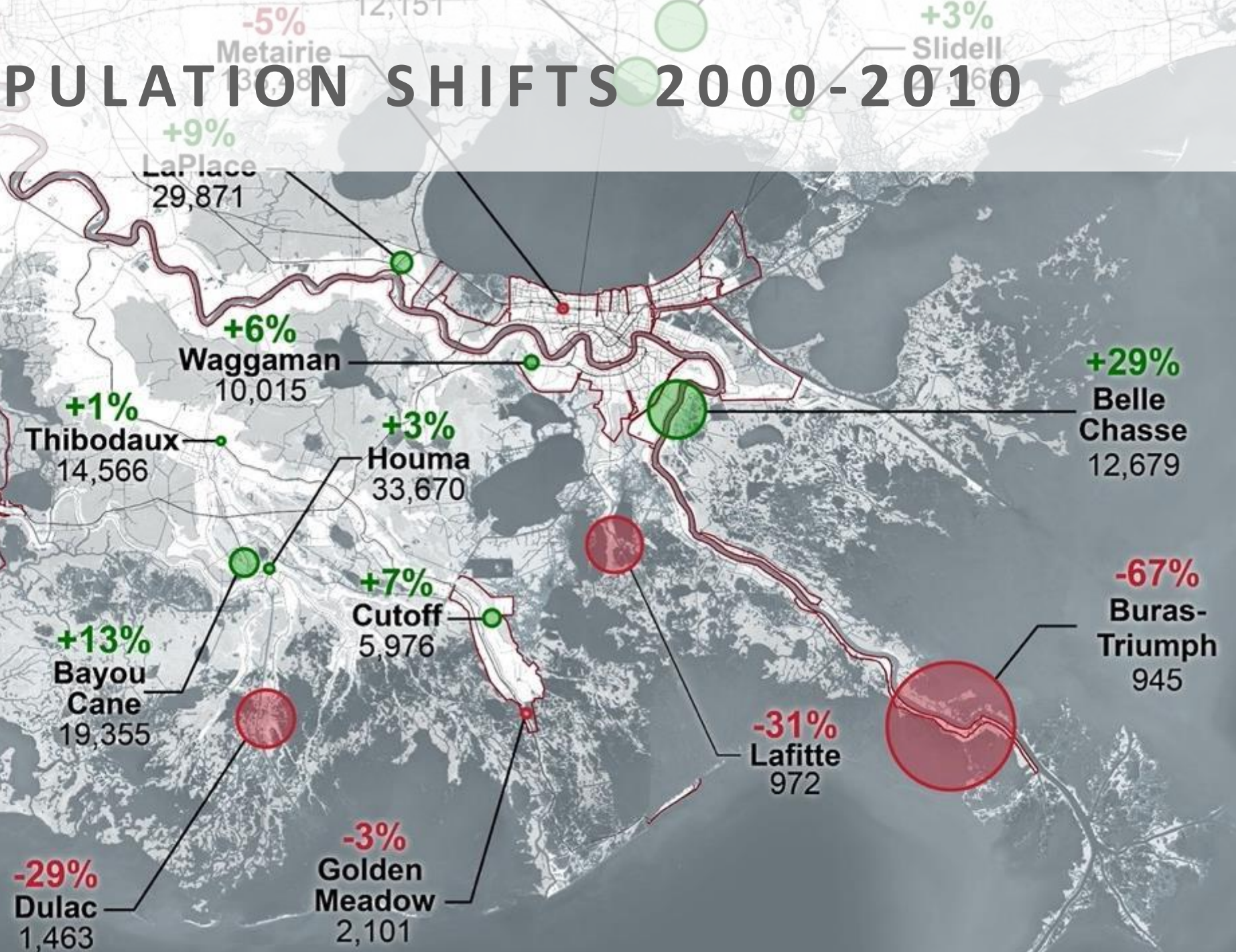
Home Insurance Cost in Every State



MANAGED RETREAT



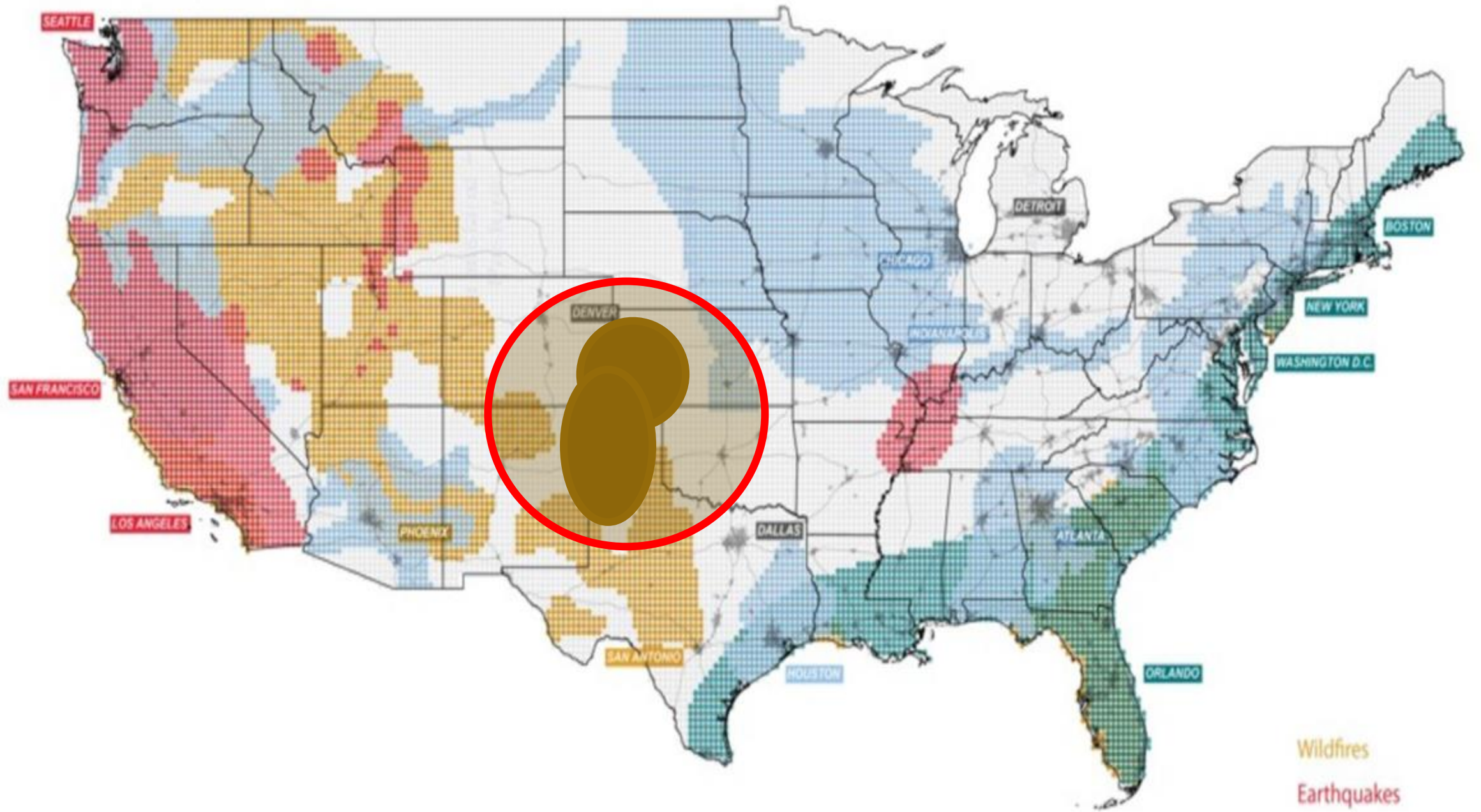
POPULATION SHIFTS 2000-2010



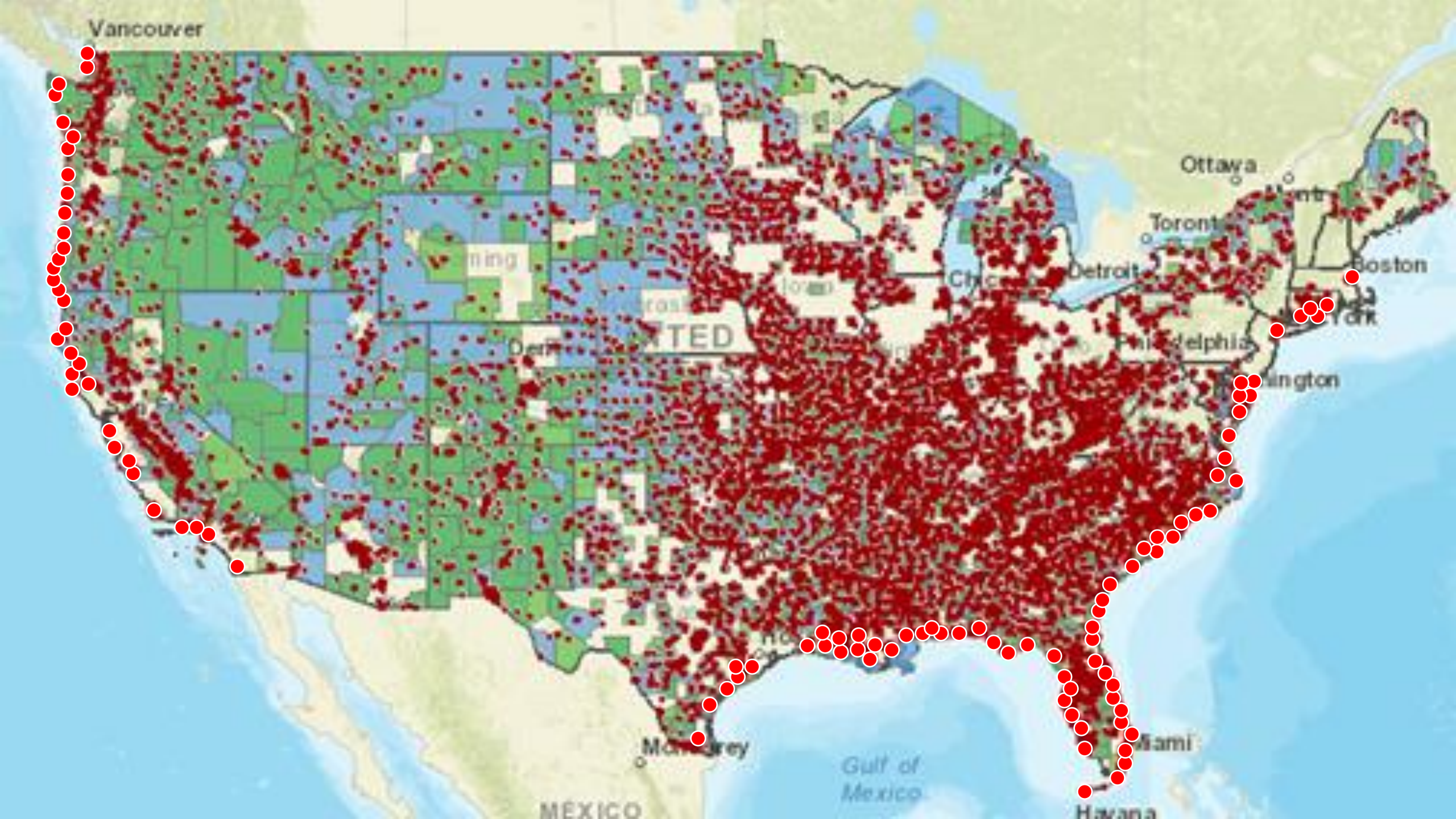


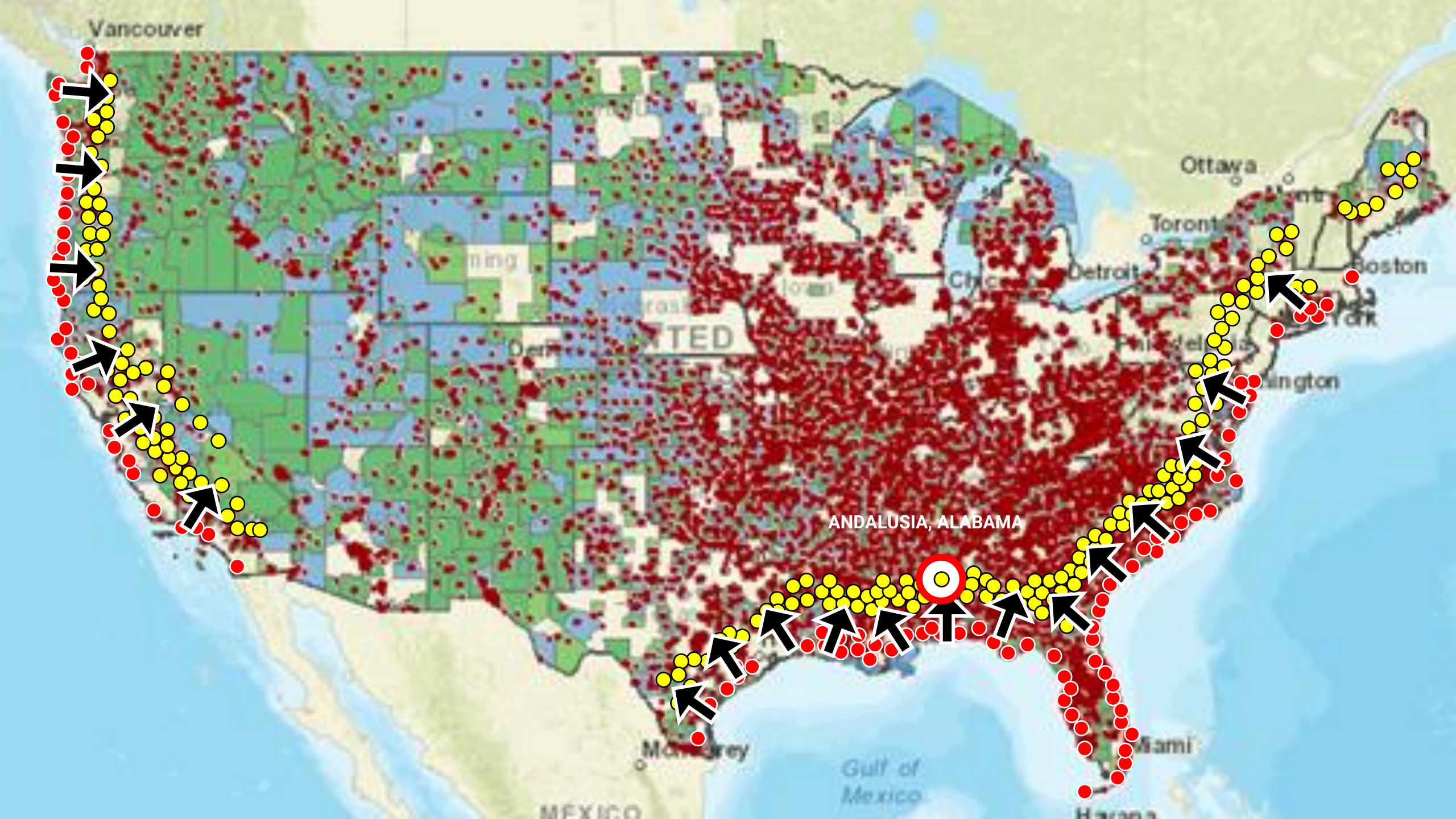
1930's DUST BOWL MIGRATION

- KILLED AROUND 7,000 PEOPLE
- LEFT 2 MILLION HOMELESS
- WHEAT PRODUCTION FELL BY 36%
- MAIZE PRODUCTION LUMMETED BY 48%



Wildfires
Earthquakes
Floods
Hurricanes





Vancouver

Ottawa

Toronto

Detroit

Chicago

Minneapolis

St. Louis

Denver

Monterey

MEXICO

Gulf of Mexico

Miami

Havana

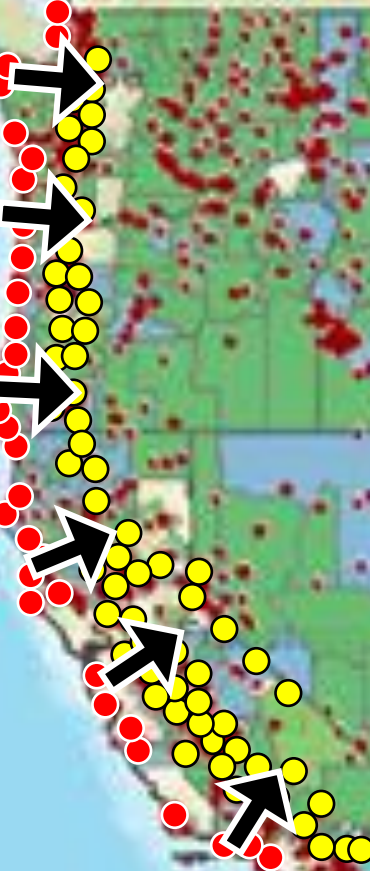
Montreal

Boston

New York

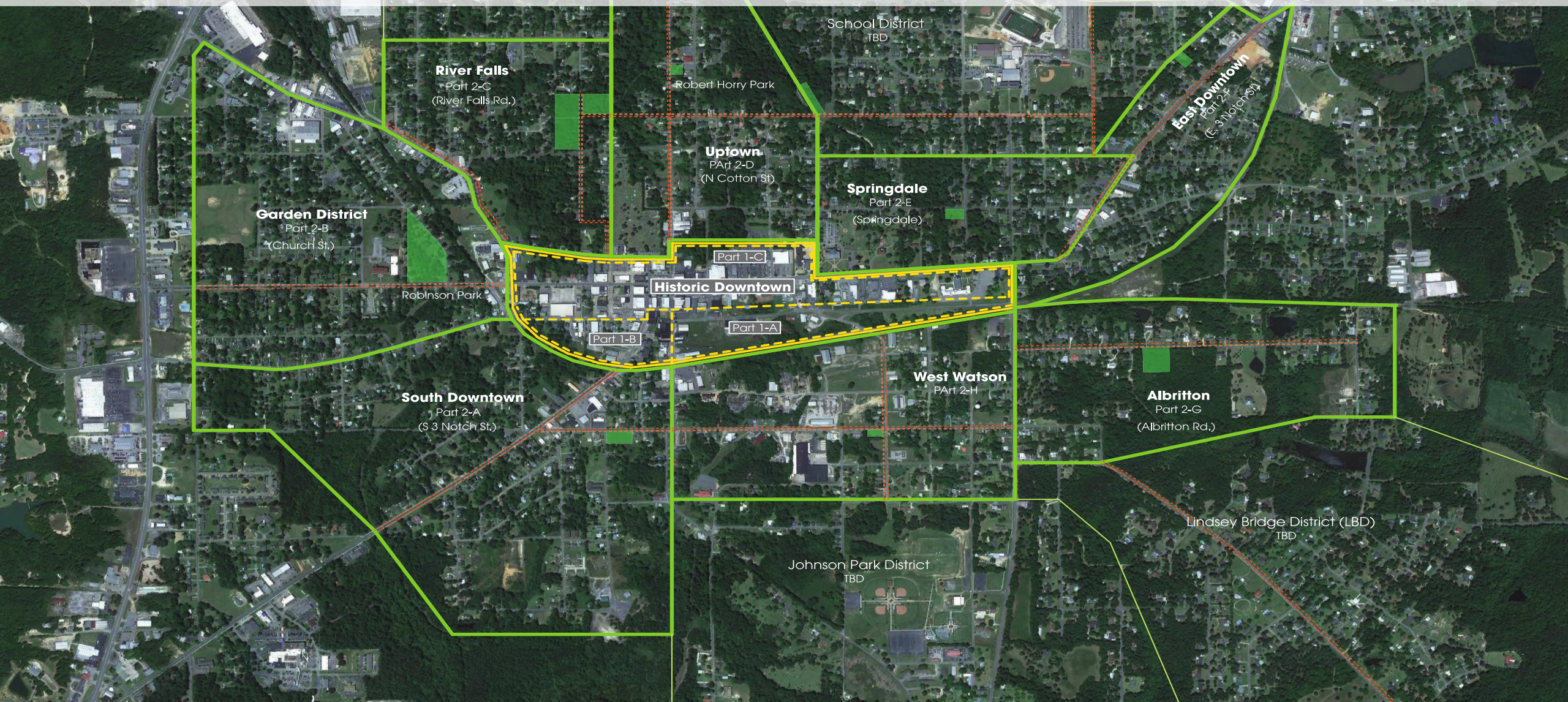
Washington

ANDALUSIA, ALABAMA



Community Centered Planning Opportunities

DOWNTOWN ANDALUSIA, ALABAMA



Community Centered Planning Opportunities

DOWNTOWN ANDALUSIA, ALABAMA



Community Centered Planning Opportunities

HERITAGE PARK, ANDALUSIA, ALABAMA



Community Centered Planning Opportunities

DOWNTOWN ANDALUSIA, ALABAMA



Community Centered Planning Opportunities

DOWNTOWN ANDALUSIA, ALABAMA



Community Centered Planning Opportunities

DOWNTOWN ANDALUSIA, ALABAMA



Community Centered Planning Opportunities

DOWNTOWN ANDALUSIA, ALABAMA



Community Centered Planning Opportunities

DOWNTOWN ANDALUSIA, ALABAMA



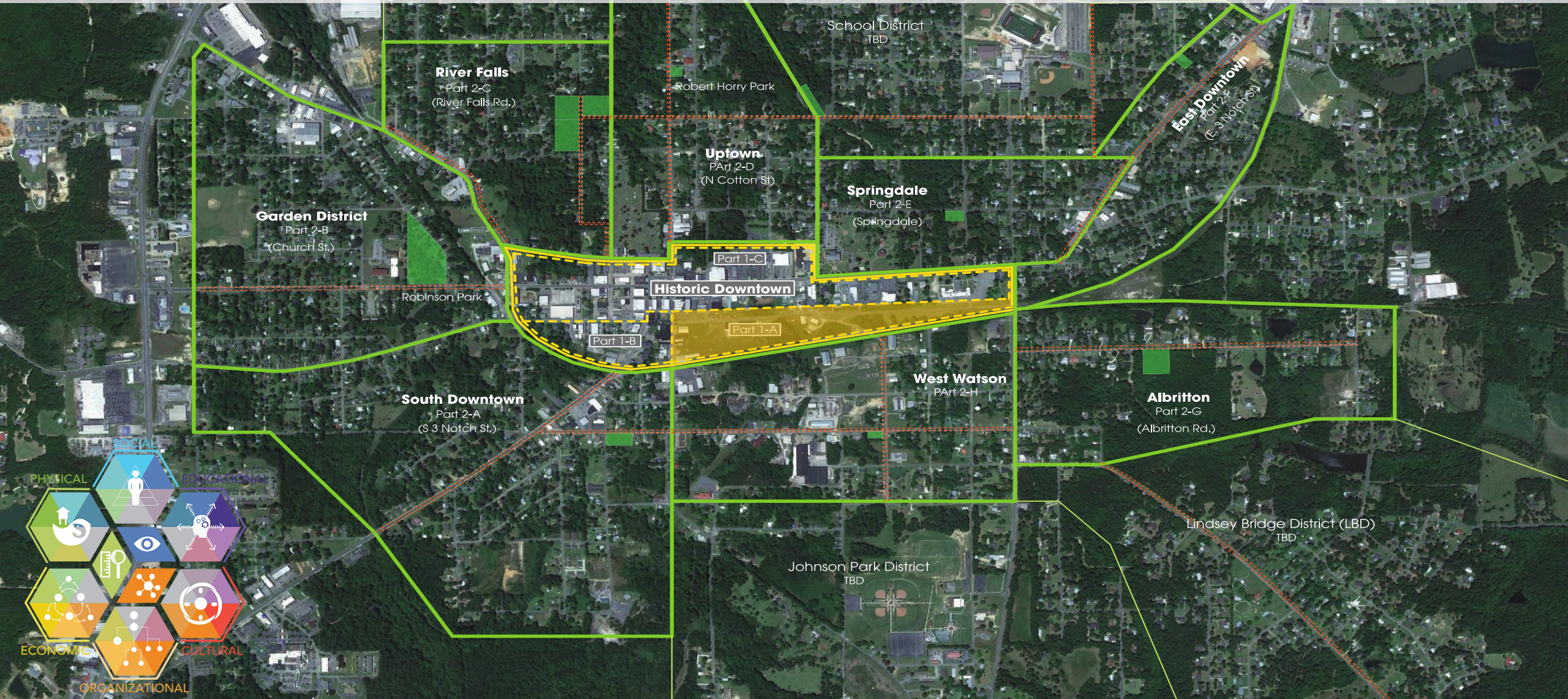
Community Centered Planning Opportunities

DOWNTOWN ANDALUSIA, ALABAMA



Community Centered Planning Opportunities

DOWNTOWN ANDALUSIA, ALABAMA



Community Centered Planning Opportunities



THANKS FOR YOUR TIME!

QUESTIONS?

STEVEN BINGLER: SBINGLER@CONCORDIA.COM

BAHAREH JAVADI: BJAVADI@CONCORDIA.COM