


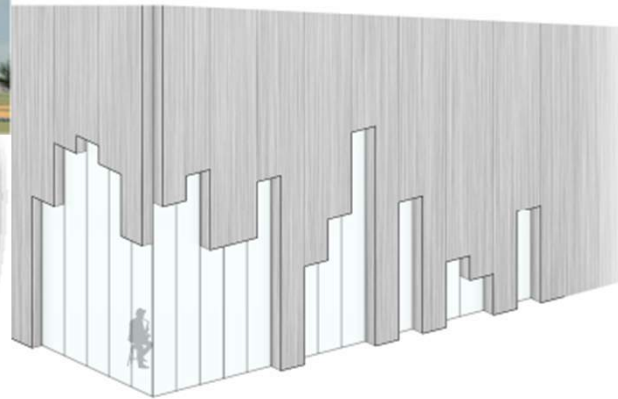
ASSOCIATION FOR  
**LEARNING ENVIRONMENTS**  
Enhancing the Educational Experience  
Virginia Chapter

 VirginiaTech

 **HAMPTON**  
UNIVERSITY  
THE STANDARD OF EXCELLENCE

2018 to 2019

# STUDENT DESIGN COMPETITION



# Purpose of the Competition

- Expand the diversity of attendees at the annual conference by encouraging participation at the university level
- Student opportunities: educational facility planning, collaboration with design professionals, presentation skills, career development
- Add a “student perspective” component to the annual conference



# Competition Overview

- Students at Virginia Tech and Hampton University competed independently with the same building program, but different sites
- 2 classes total – 1 class at Virginia Tech and 1 class at Hampton University

## Awards per Each Class

- First Place - \$500 award + conference expenses (present design)
- Second Place - \$250 award + conference expenses (present design)
- Two Honorable Mentions – certificate

## Mentoring Teams

- **Virginia Tech** – Spectrum Design, Moseley Architects, RRMM Architects
- **Hampton University** – Newport News Public Schools, RRMM Architects



# Competition Overview

- Design a “High School Center for Performing Arts” – a collaborative environment intended to enhance learning opportunities for high school students aspiring to further their career in the performing arts arena.
- Sites selected by Universities
- 3<sup>rd</sup> or 4<sup>th</sup> year architecture students, 6-10 weeks to complete
- Program was organized around flexible design that is able to support a variety of activities and promotes collaboration between all students



COLLABORATION



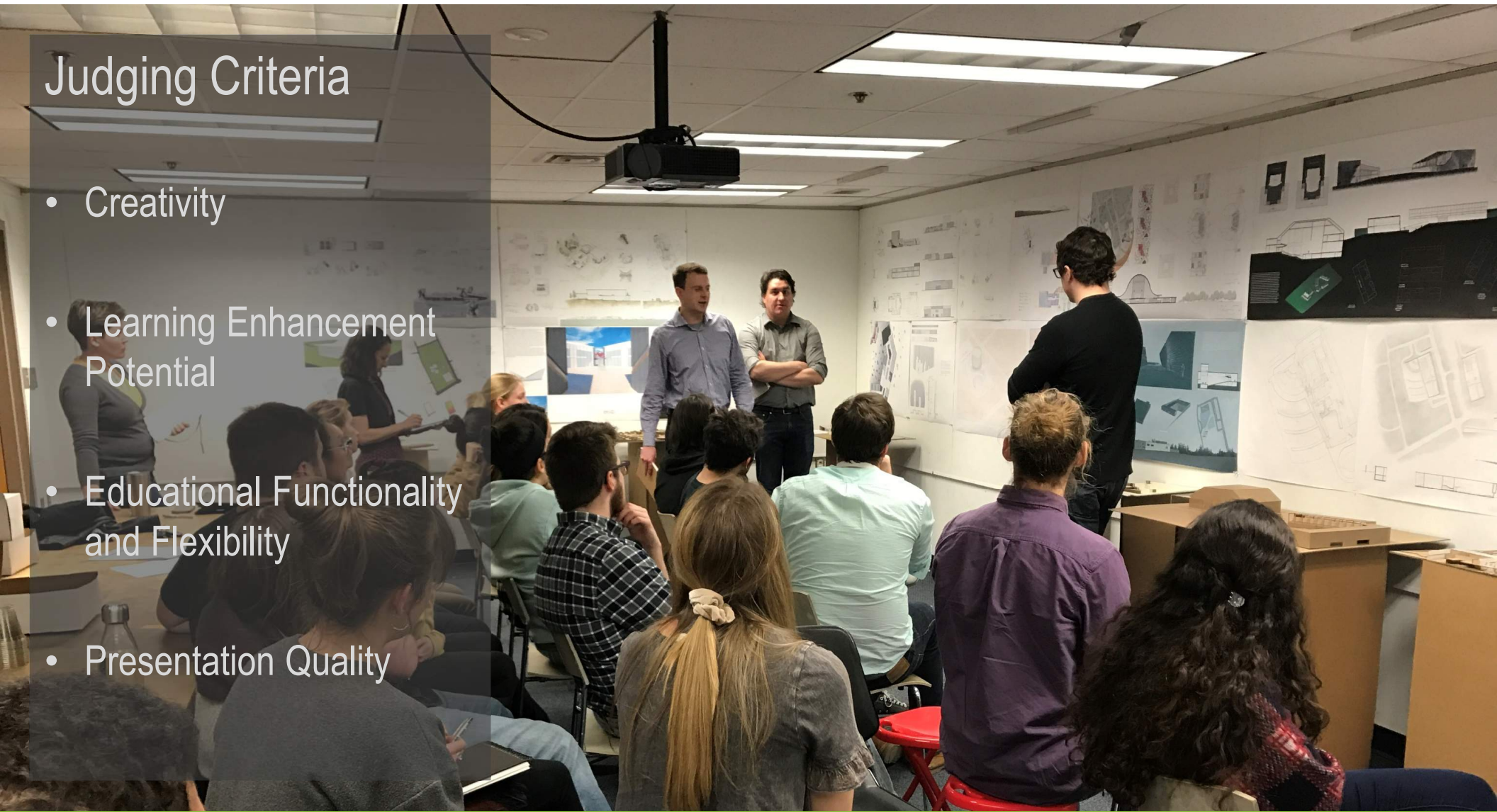
PERFORMANCE



CELEBRATION

# Judging Criteria

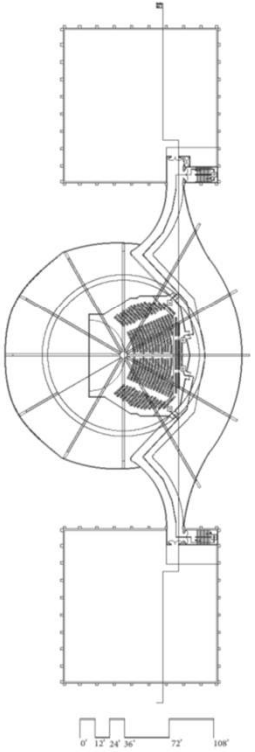
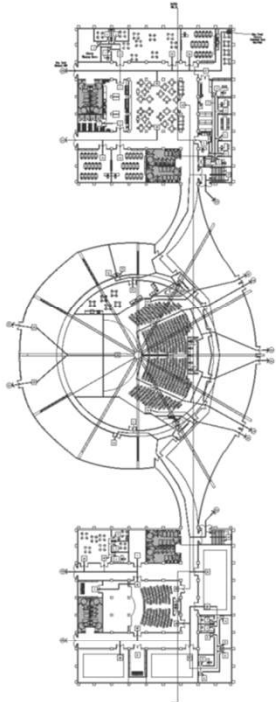
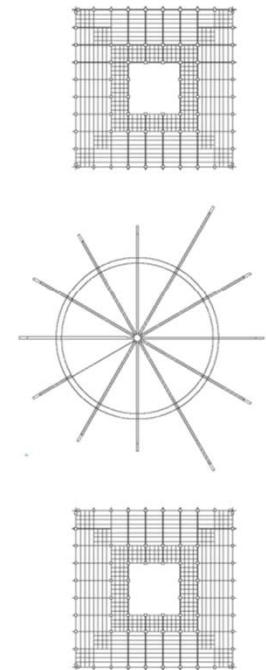
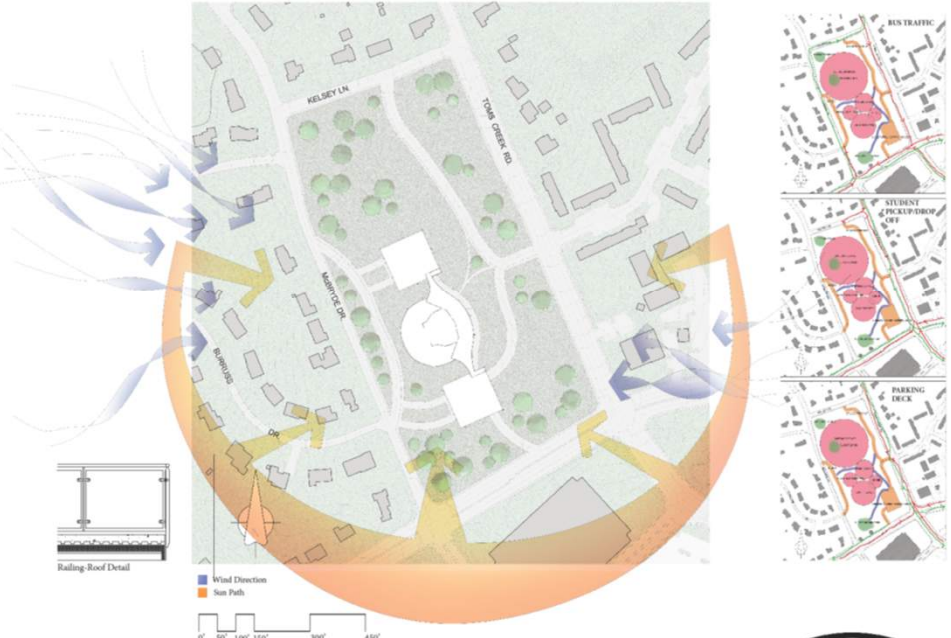
- Creativity
- Learning Enhancement Potential
- Educational Functionality and Flexibility
- Presentation Quality





# Honorable Mention – Erik Harvey

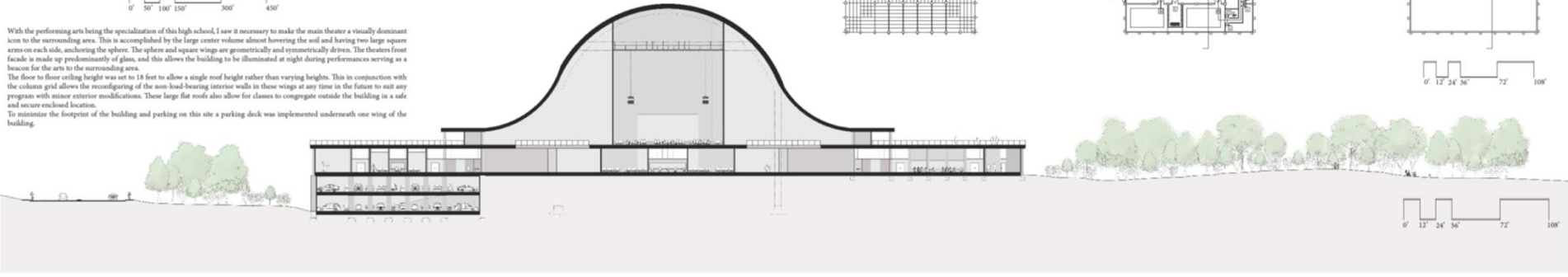
Virginia Tech



With the performing arts being the specialization of this high school, I saw it necessary to make the main theater a visually dominant icon to the surrounding area. This is accomplished by the large center volume almost hovering the roof and having two large square arms on each side, anchoring the sphere. The sphere and square wings are geometrically and symmetrically driven. The theater's front facade is made up predominantly of glass, and this allows the building to be illuminated at night during performances serving as a beacon for the arts to the surrounding area.

The floor to floor ceiling height was set to 18 feet to allow a single roof height rather than varying heights. This in conjunction with the column grid allows the reconfiguring of the non-load-bearing interior walls in these wings at any time in the future to suit any program with minor exterior modifications. These large flat roofs also allow for classes to congregate outside the building in a safe and secure enclosed location.

To minimize the footprint of the building and parking on this site a parking deck was implemented underneath one wing of the building.



# Honorable Mention – Erik Harvey

Virginia Tech

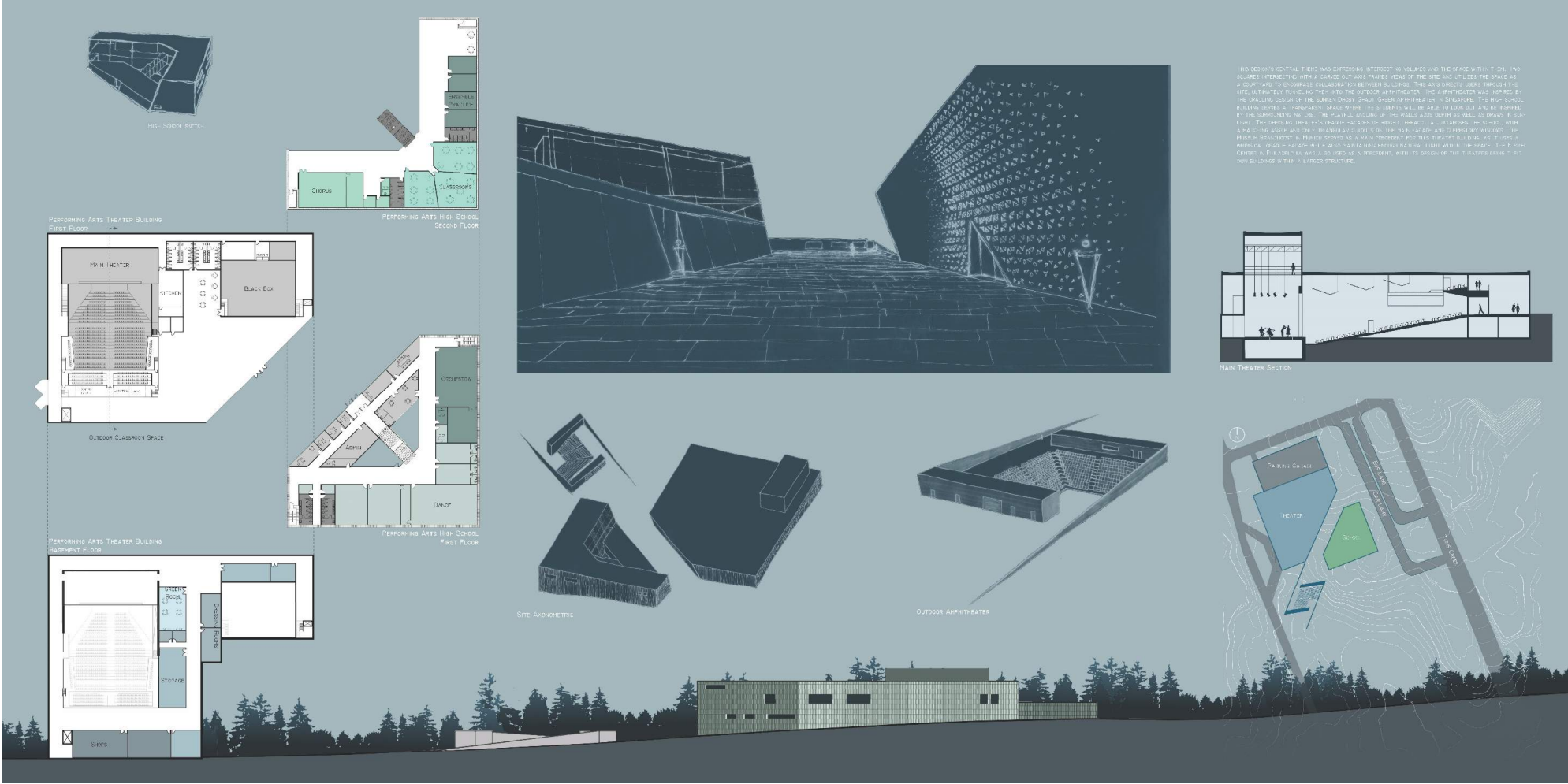


## Judges' Comments:

- Use of tensile structure is unique, and scale of project is great
- Excellent program layout and functional plans

# Honorable Mention – Alexis Jurgens

Virginia Tech





# Honorable Mention – Alexis Jurgens

Virginia Tech

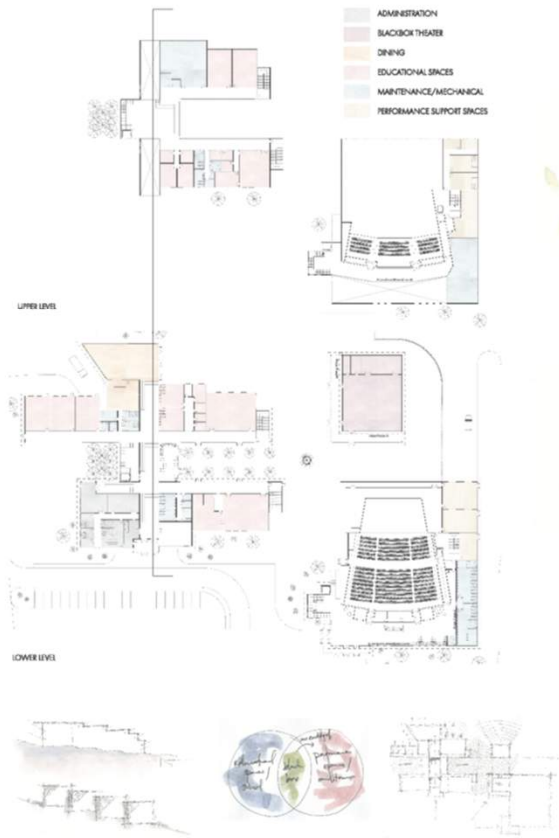


## Judges' Comments:

- Beautiful board and eye-catching graphics
- Artistic building design, yet fully functional and responded to the program appropriately

# Second Place – Jacklynn “Jackie” Benfield

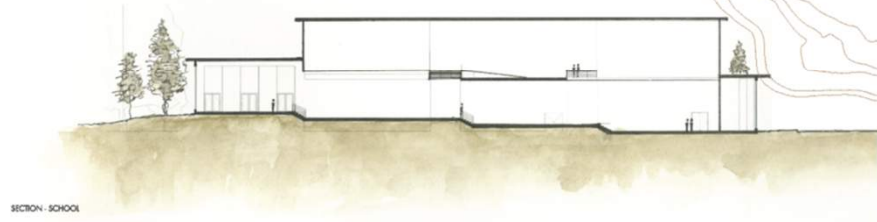
Virginia Tech



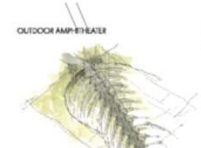
Located off Phase 100 Road in Blacksburg, Virginia, the Center for the Performing Arts has a special arrangement shaped by the relationship of the site's programmatic elements: the educational division, the performance spaces, and the Backstage Theater. Being centered around the performing arts, the circulation spaces are typically visible and transparent to emphasize the circulation of individuals, creating opportunities for inspiring individuals to gather, pose, or interact with one another. The central, linear entrance of the school through the back of the auditorium side is segmented through an accessible way—the condition built four digital-level changes in the flat floor, existing on the slope of the topography. The outdoor amphitheater uses the landscape of the site to create a natural, more informal performance space for the comfort of the students whereas the indoor theater space emphasizes the verticality and rigidity of the structure, creating a more formal performance space. The Backstage Theater bridges the idea between a more formal educational space and a less formal performance space, creating its own identity on the site. The design approach encompasses the idea of promoting creative, collaborative learning experiences for 500 students gifted in the arts.



AXONOMETRIC SITE SKETCH



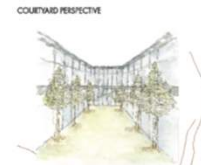
SECTION - SCHOOL



OUTDOOR AMPHITHEATER



AXONOMETRIC SKETCH



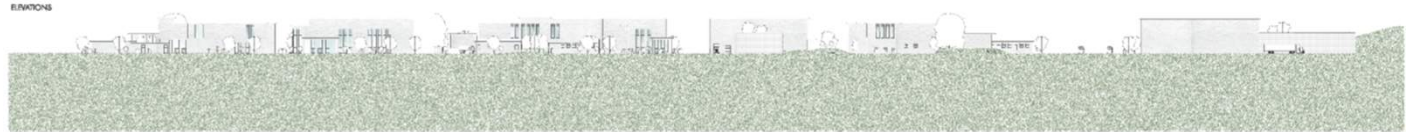
COURTYARD PERSPECTIVE



ARCHITECTURAL SITE PLAN



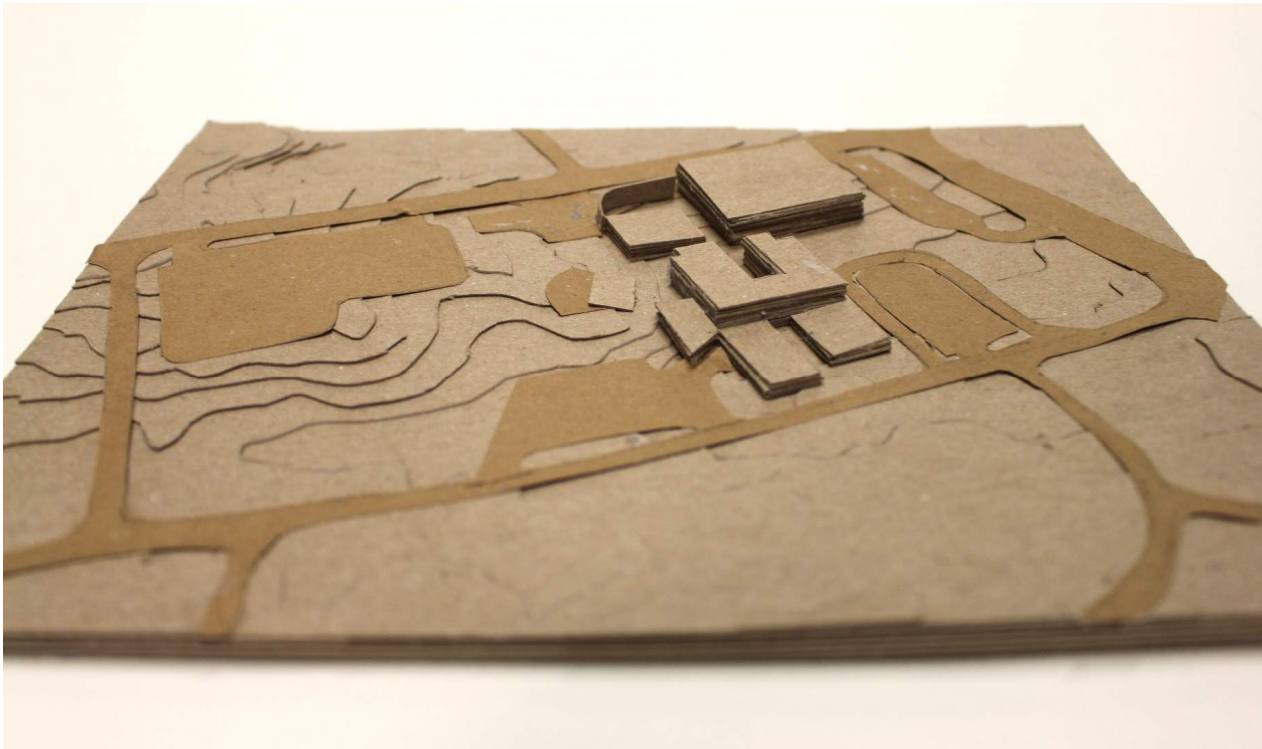
SECTION - SITE



ELEVATIONS

# Second Place – Jacklynn “Jackie” Benfield

Virginia Tech



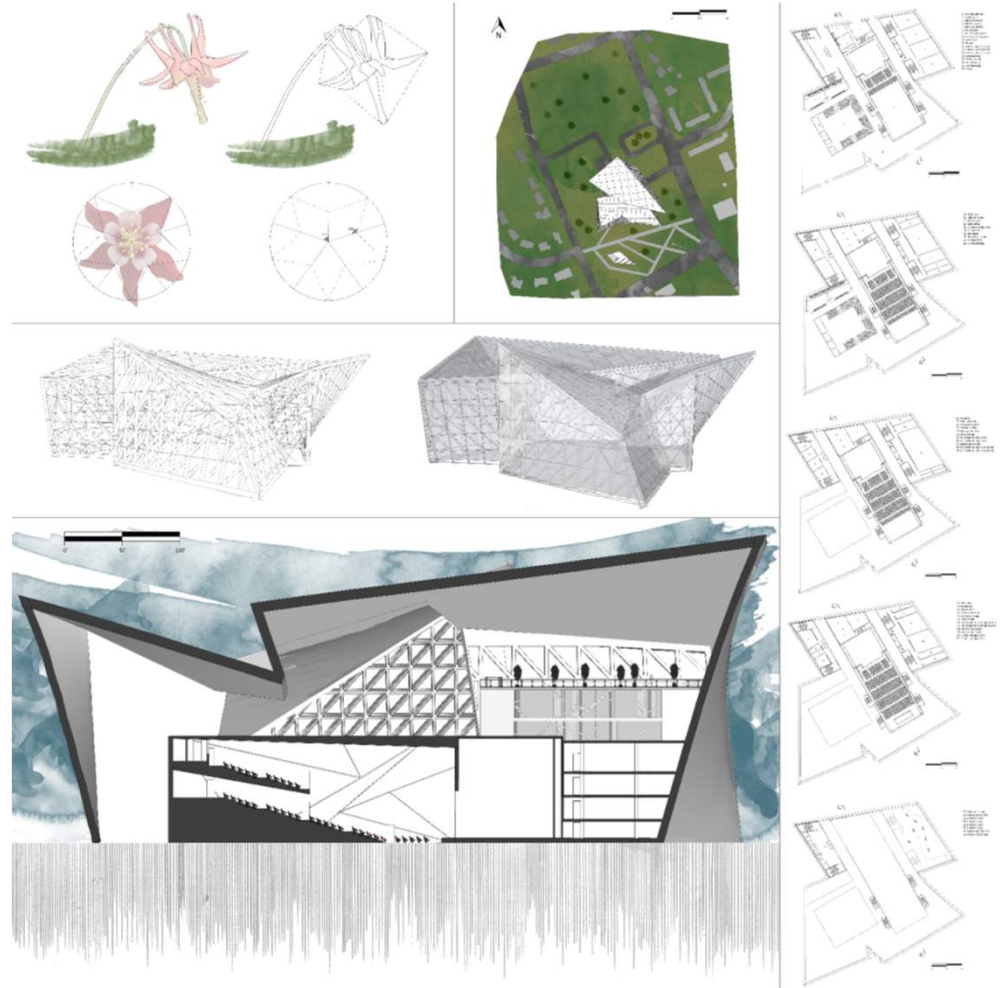
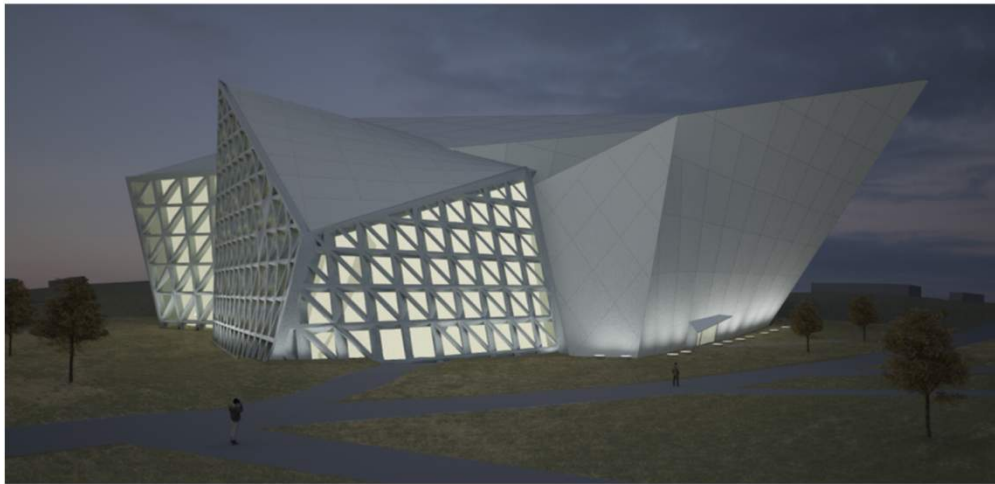
## Judges' Comments:

- Board layout one of the best – use of watercolor wash and color schemes played beautifully
- One of the most “buildable” buildings
- Excellent elevations, arranged in an artistic, yet understandable layout



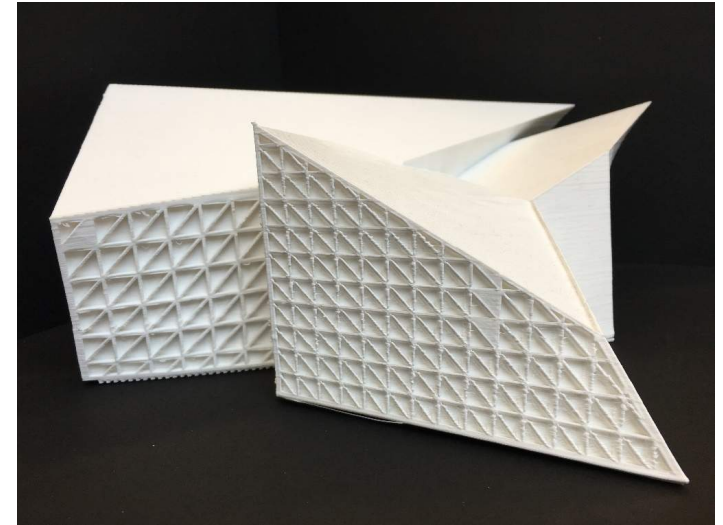
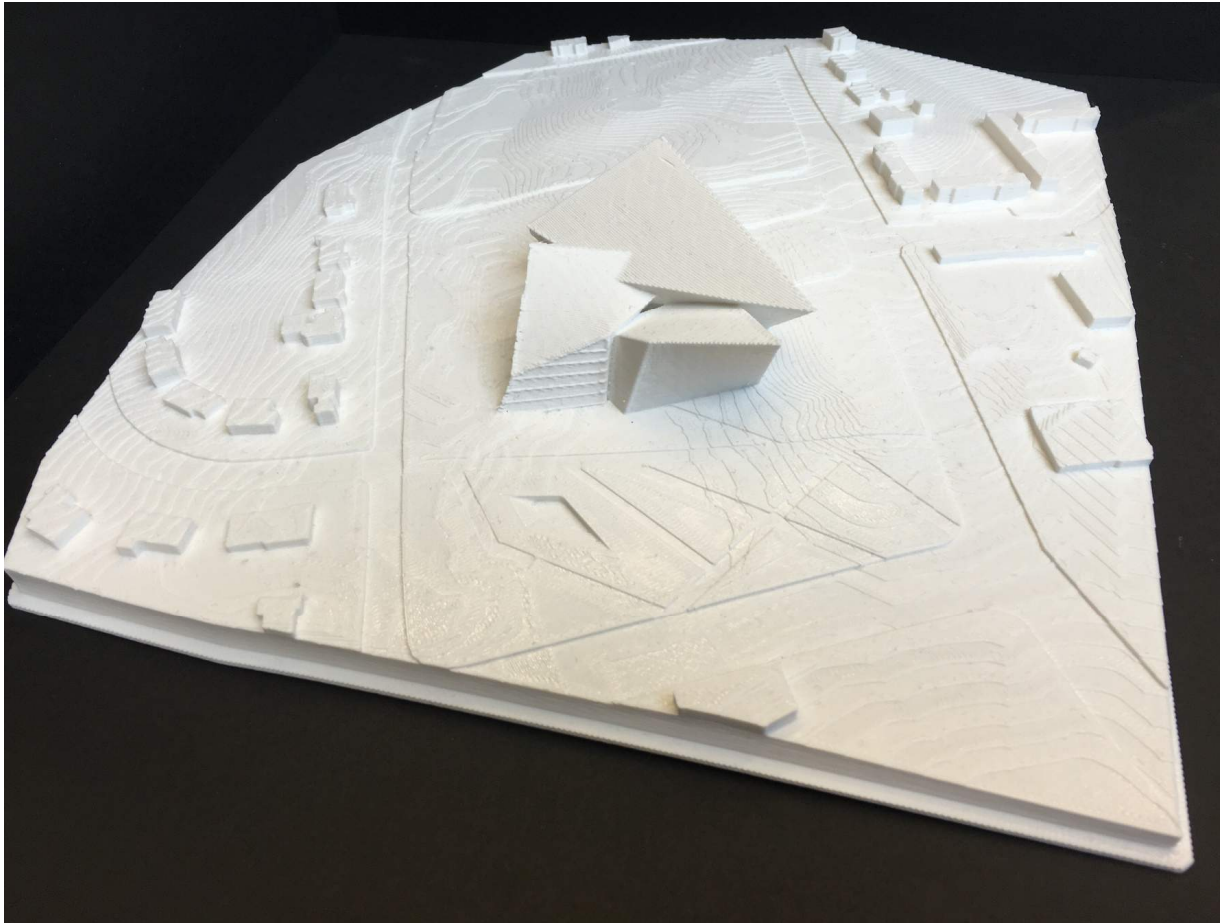
# First Place – Mohamad “Mo” Yaish

Virginia Tech



# First Place – Mohamad “Mo” Yaish

Virginia Tech



## Judges' Comments:

- Excellent description of “concept” followed through in the design
- Visually stimulating graphics and well thought out arrangement – every image and detail depicts a unique aspect



# Honorable Mention – Michael Poarch

Hampton University

## Brights Creek School of Performing Arts

The site is located on the intersection of North Armistead Ave. and Rip Rap Rd. in Hampton, VA. The site plan is designed based on orientation and circulation. The site incorporates the outdoor elements in the form of the Yin Yang symbol which allows for a circulation flow through to an outdoor theater.

My concept is balance, which relates to the rhythm and harmony of the Arts. The school design simulates the meaning of balance through the organization of spaces and use of materials. Its facade has a balance composition of concrete, brick, glass, and perforated metal. The metal is used as a cladding to bring a decorative look to the structure. The pattern of the cladding was an inspiration from the bureau of balance symbol.

The building has three primary sections: educational spaces, public and gathering spaces, and a main theater with support spaces. The public and gathering spaces serve as a central element that provides natural light by a skylight. This space allows people to get close to nature within an enclosed setting. From these spaces, people receive a warm welcome with a sense of openness.



Southeast Perspective



North Elevation



West Elevation



South Elevation



East Elevation



Section



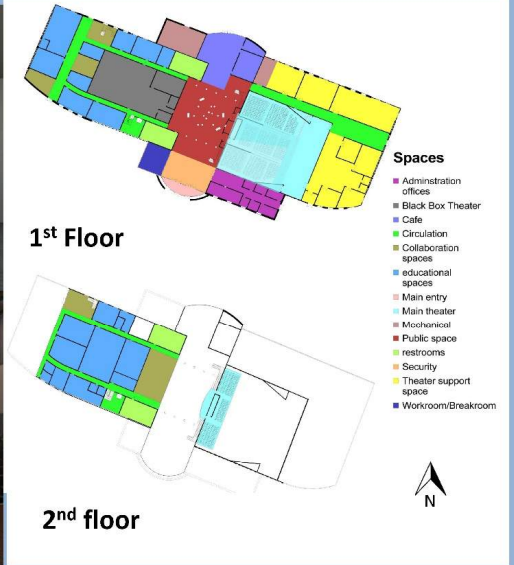
Northwest Perspective



Perspective of the public space



Perspective of the theater from the stage





# Honorable Mention – Michael Poarch

Hampton University

## Brights Creek School of Performing Arts

The site is located on the intersection of North Armistead Ave. and Rip Rap Rd. in Hampton, VA. The site plan is designed based on orientation and circulation. The site incorporates the outdoor elements in the form of the Yin Yang symbol which allows for a circulation flow through to an outdoor theater.

My concept is balance, which relates to the rhythm and harmony of the Arts. The school design simulates the meaning of balance through the organization of spaces and use of materials. Its facade has a balance composition of concrete, brick, glass, and perforated metal. The metal is used as a cladding to bring a decorative look to the structure. The pattern of the cladding was an inspiration from the bureau of balance symbol.

The building has three primary sections: educational spaces, public and gathering spaces, and a main theater with support spaces. The public and gathering spaces serve as a central element that provides natural light by a skylight. This space allows people to get close to nature within an enclosed setting. From these spaces, people receive a warm welcome with a sense of openness.



Southeast Perspective



North Elevation



West Elevation



South Elevation



East Elevation



Section



Northwest Perspective

## Judges' Comments:

- The program spaces are laid out well.
- Excellent use of materials on the façade to make an interesting and harmonious design.
- The elevations are strong and colorful, creating a friendly and lively presence.

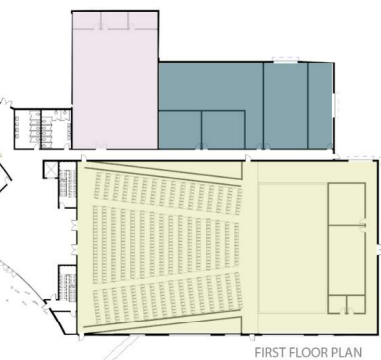
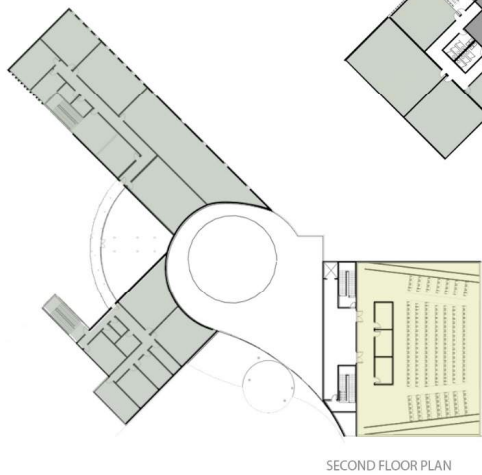
# Honorable Mention – Dominique Murray

Hampton University

## Harmony

The design proposal for the academy of Harmonic Excellence concept for this school is harmony. Harmony is how different the school serve different purposes but still function together with 2 outdoor learning spaces on either side. The design also the intent to harmonize with nature. The two educational wings student entry is marked with an outdoor theatre with tiered can also serve as a gathering space for the students when not education, and the performing arts to create architecture.

is a performing arts center located in Hampton, Virginia. The design sounds or elements blend together to form one. The different spaces in as a whole. The student entry is located west and consists of a colonnade features a green wall on the theater facade and an accessible green roof with are connected by a glass "sky walk" with views of the green roof. The seating surrounding a performing space at the lowest level. This space in use. The Academy of Harmonic Excellence blends nature,



- LEGEND
- Administration
  - Main Theater
  - Theater Support Spaces
  - Educational Spaces
  - Black Box Theater
  - Dining
  - Mechanical
  - Outdoor Theater



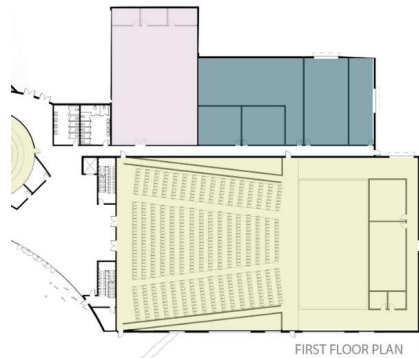
# Honorable Mention – Dominique Murray

Hampton University

## Harmony

The design proposal for the academy of Harmonic Excellence concept for this school is harmony. Harmony is how different things serve different purposes but still function together. The school has two outdoor learning spaces on either side. The design also is intent to harmonize with nature. The two educational wings are connected by a glass "sky walk" with tiered seating. Student entry is marked with an outdoor theatre with tiered seating in also serve as a gathering space for the students when not in use. The Academy of Harmonic Excellence blends nature, education, and the performing arts to create architecture.

The design is a performing arts center located in Hampton, Virginia. The design is a concept for this school is harmony. Harmony is how different sounds or elements blend together to form one. The different spaces in the school serve different purposes but still function together. The design also is intent to harmonize with nature. The two educational wings are connected by a glass "sky walk" with tiered seating. Student entry is marked with an outdoor theatre with tiered seating in also serve as a gathering space for the students when not in use. The Academy of Harmonic Excellence blends nature, education, and the performing arts to create architecture.



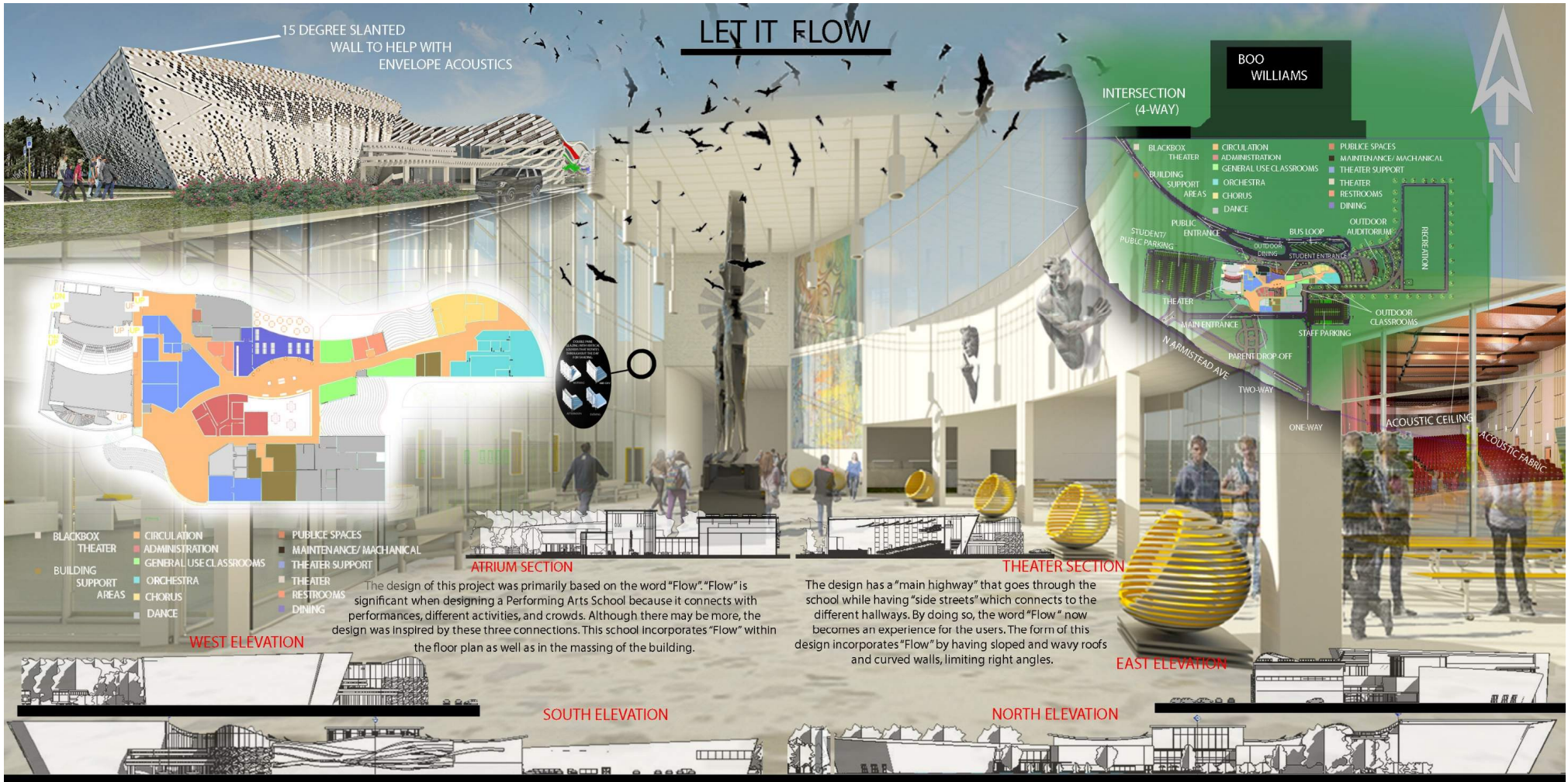
### Judges' Comments:

- The boards are laid out well graphically making it very clear and easy to understand the design.
- Does a good job of making the structure part of the design with the canopy columns and the stairwells.
- It's a great idea to have the outdoor theater as the central focus of the school.



# Second Place – Trayquan Walton

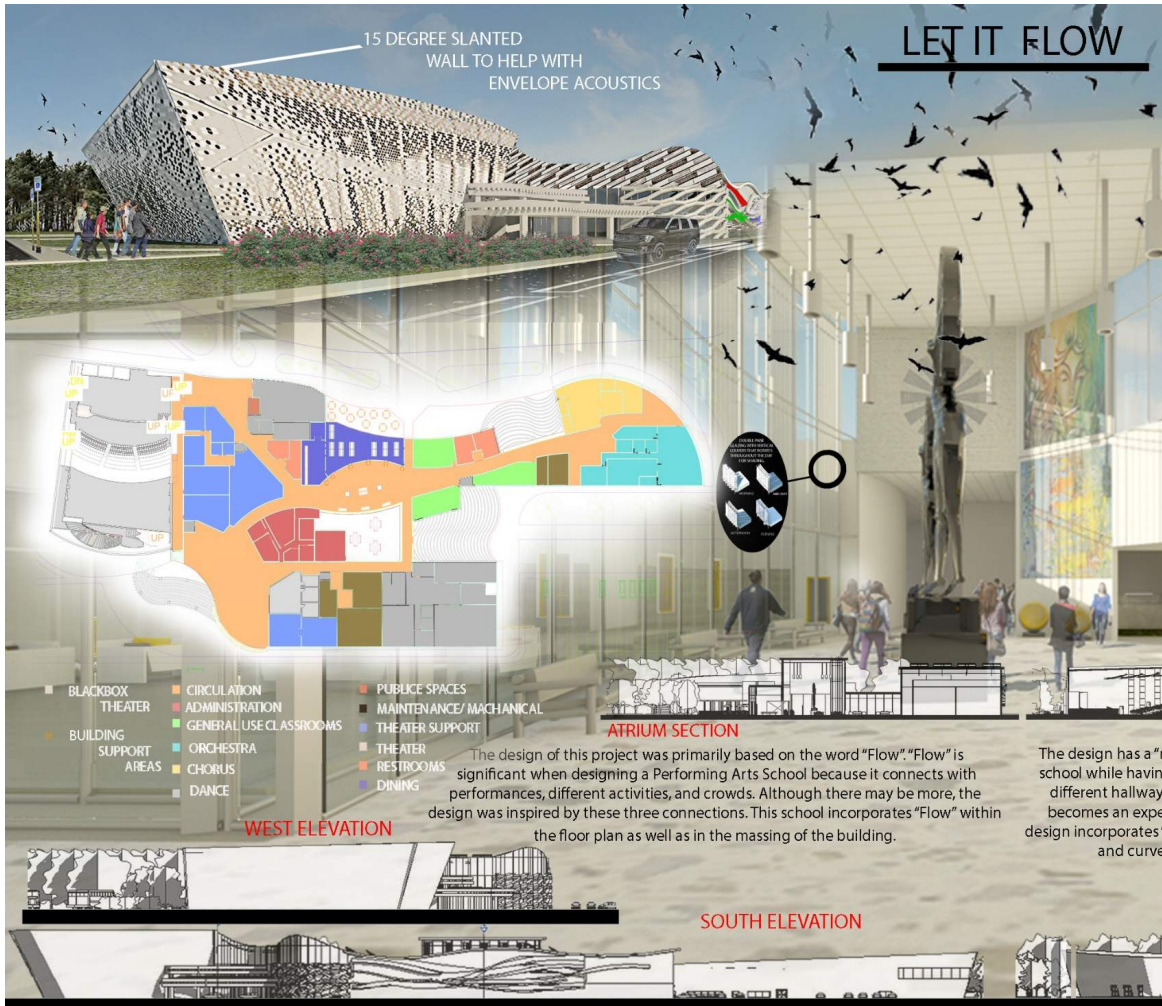
Hampton University





# Second Place – Trayquan Walton

Hampton University

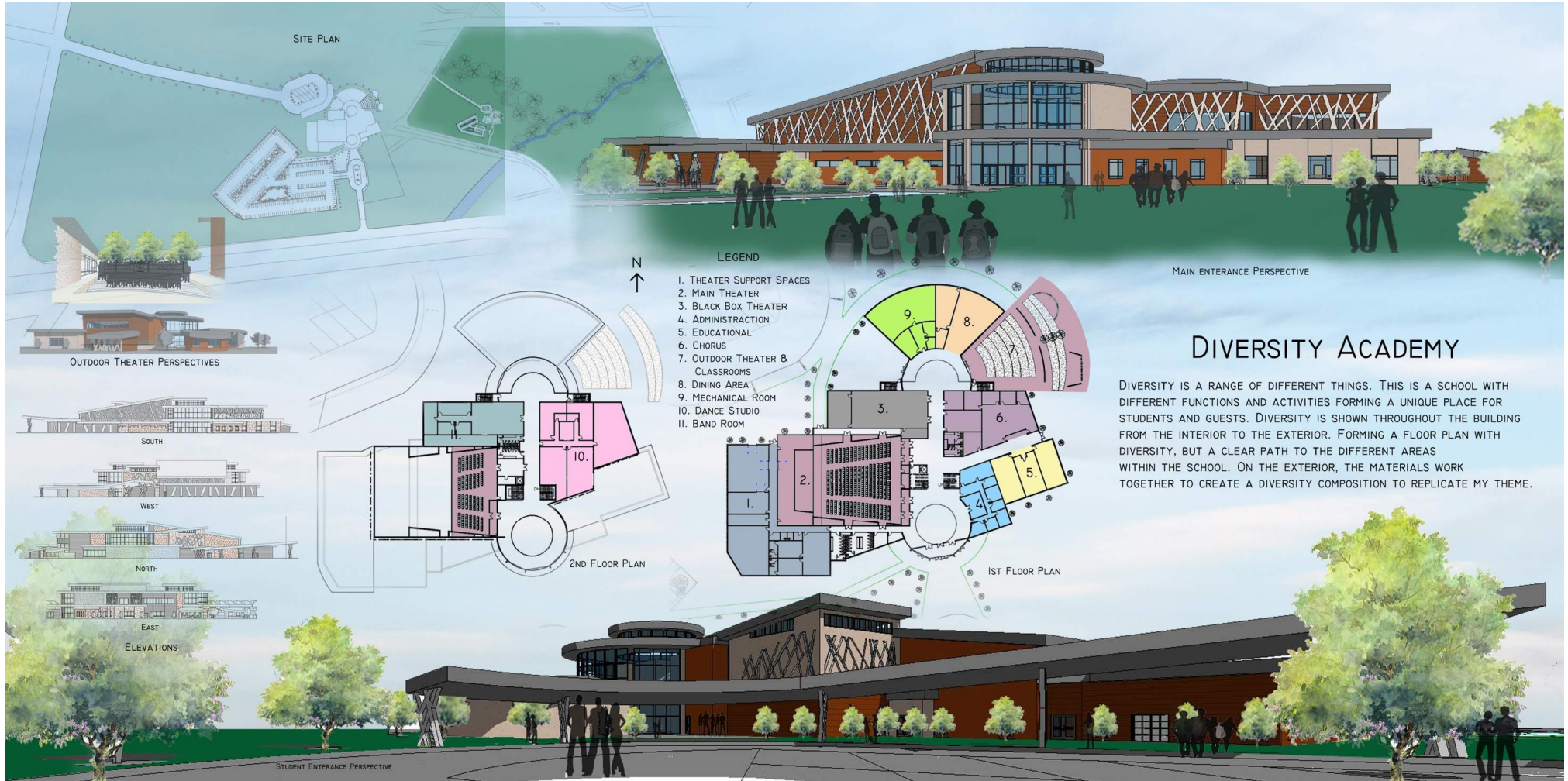


## Judges' Comments:

- Excellent use of materials and forms on the façade to make an interesting and harmonious design.
- The imagery in the central lobby is beautiful and totally evocative of the true art form that the school is supposed to represent: Theatre and performing arts.
- The renderings are excellent and really helps the viewer feel the space you're trying to create.

# First Place – Diamond Davis

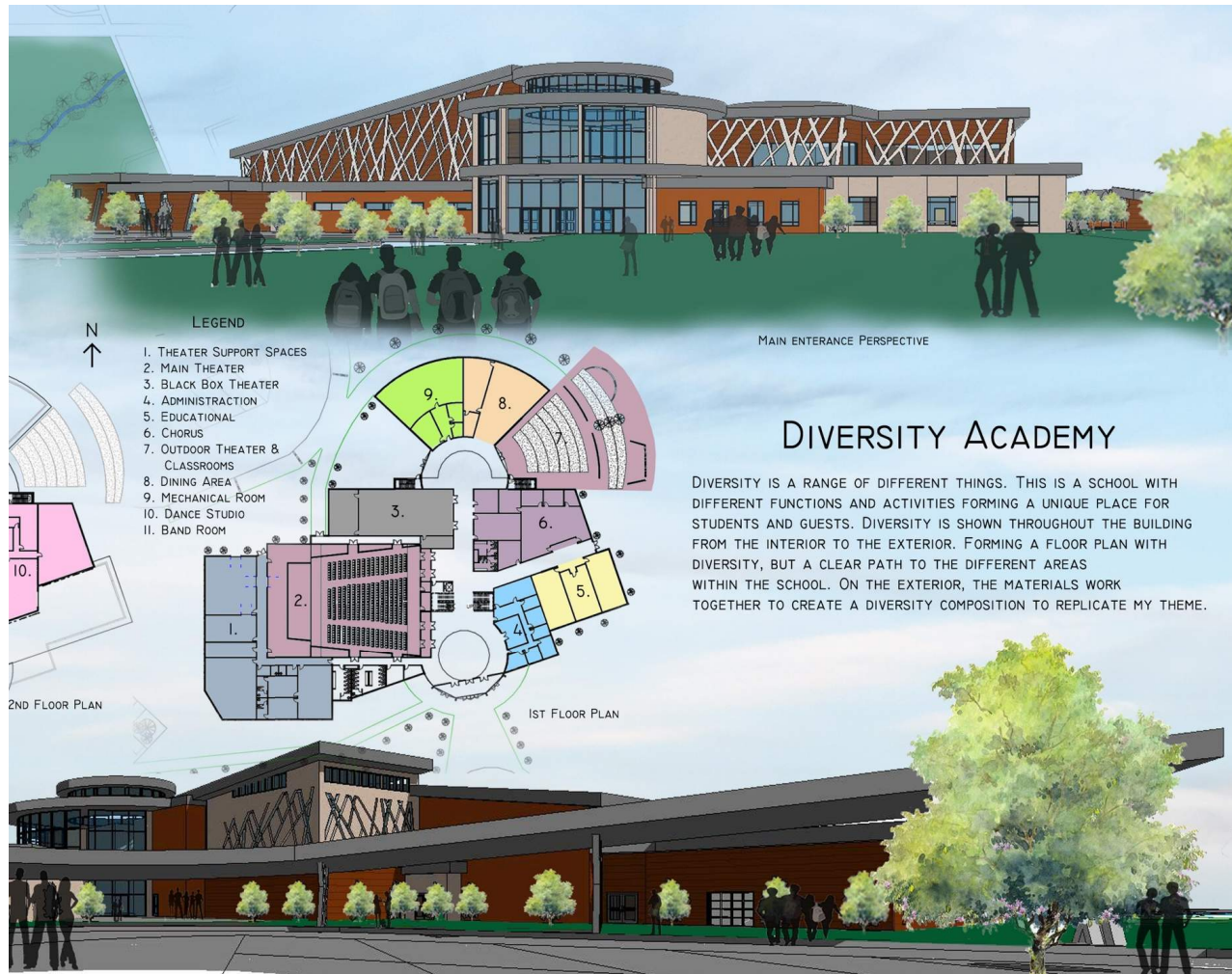
Hampton University





# First Place – Diamond Davis

Hampton University

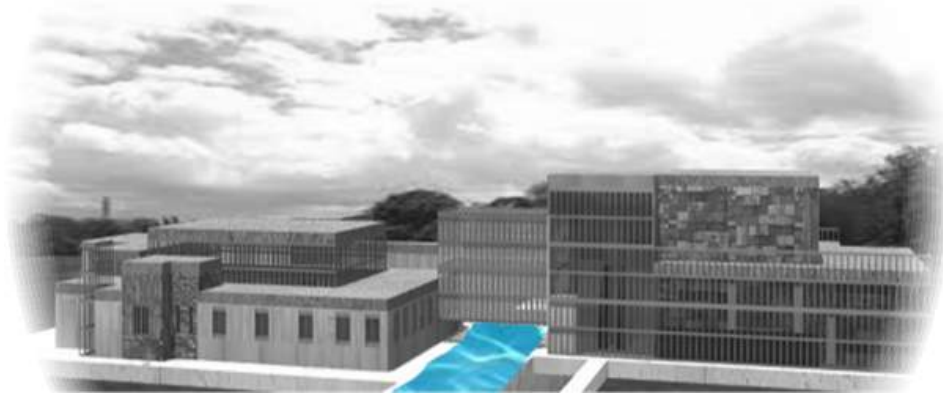
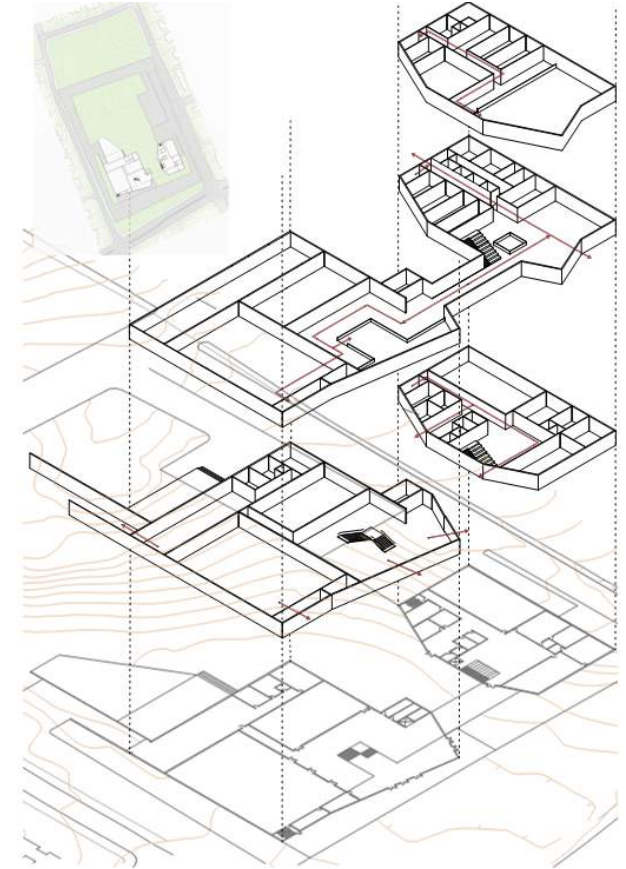


## Judges' Comments:

- The boards are laid out well graphically making it very clear and easy to understand the design.
- I love how the structural canopy columns mimic the exterior skin, it ties the design together nicely.
- The floor plan is very clear, concise, and well thought out.

# Final Jury Comments

- Graphic composition is very important
- Illustrate graphic elements that best tell the story
- Make sure plans and renderings are easy to read and detailed
- Overall.... Very Impressive!!! Thank you!!!



# Special Thanks to...

- Virginia Tech
  - Professor Elizabeth Grant
- Hampton University
  - Professor Robert Easter

