

Eastern View High School



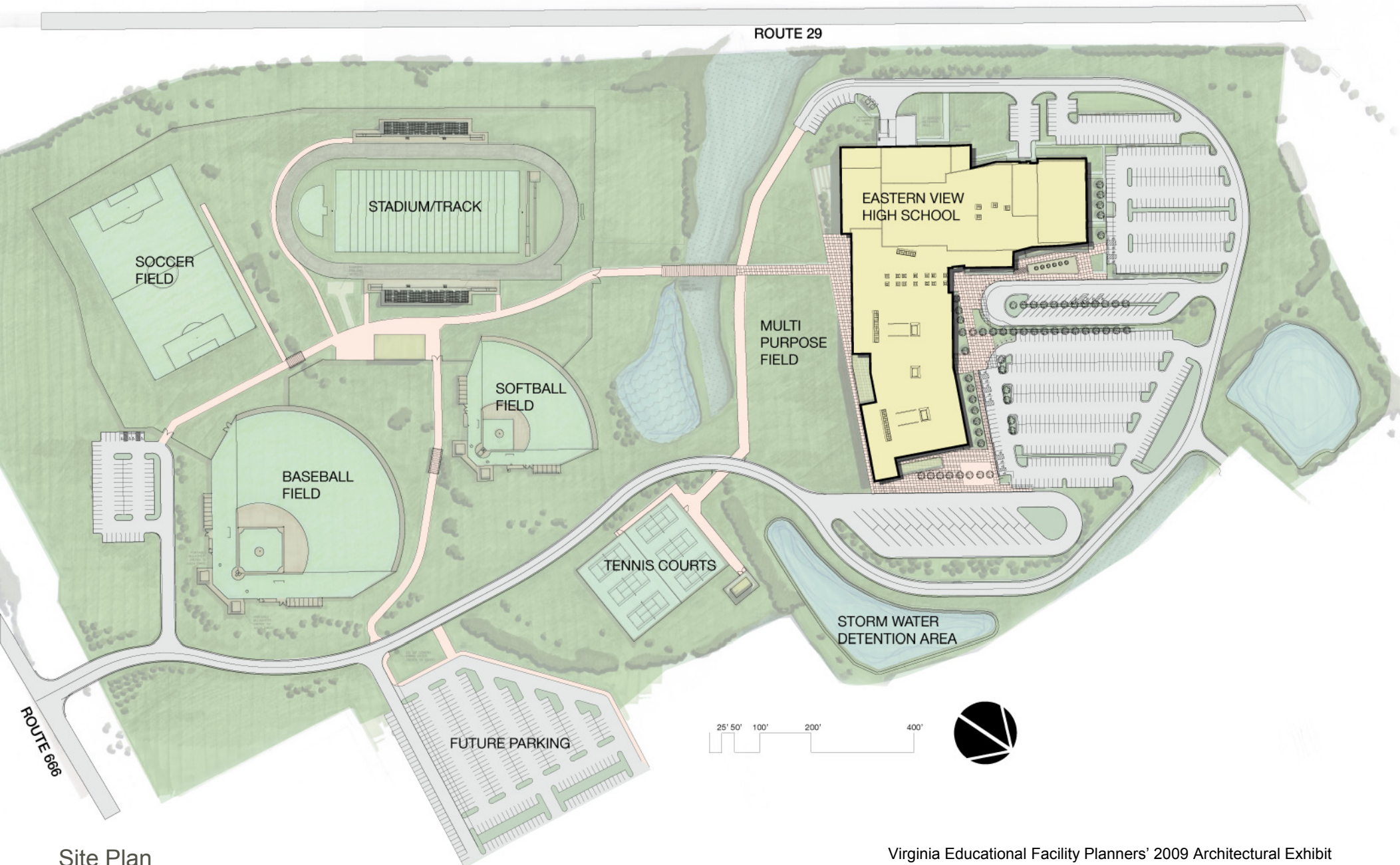
Main Entry



View from east

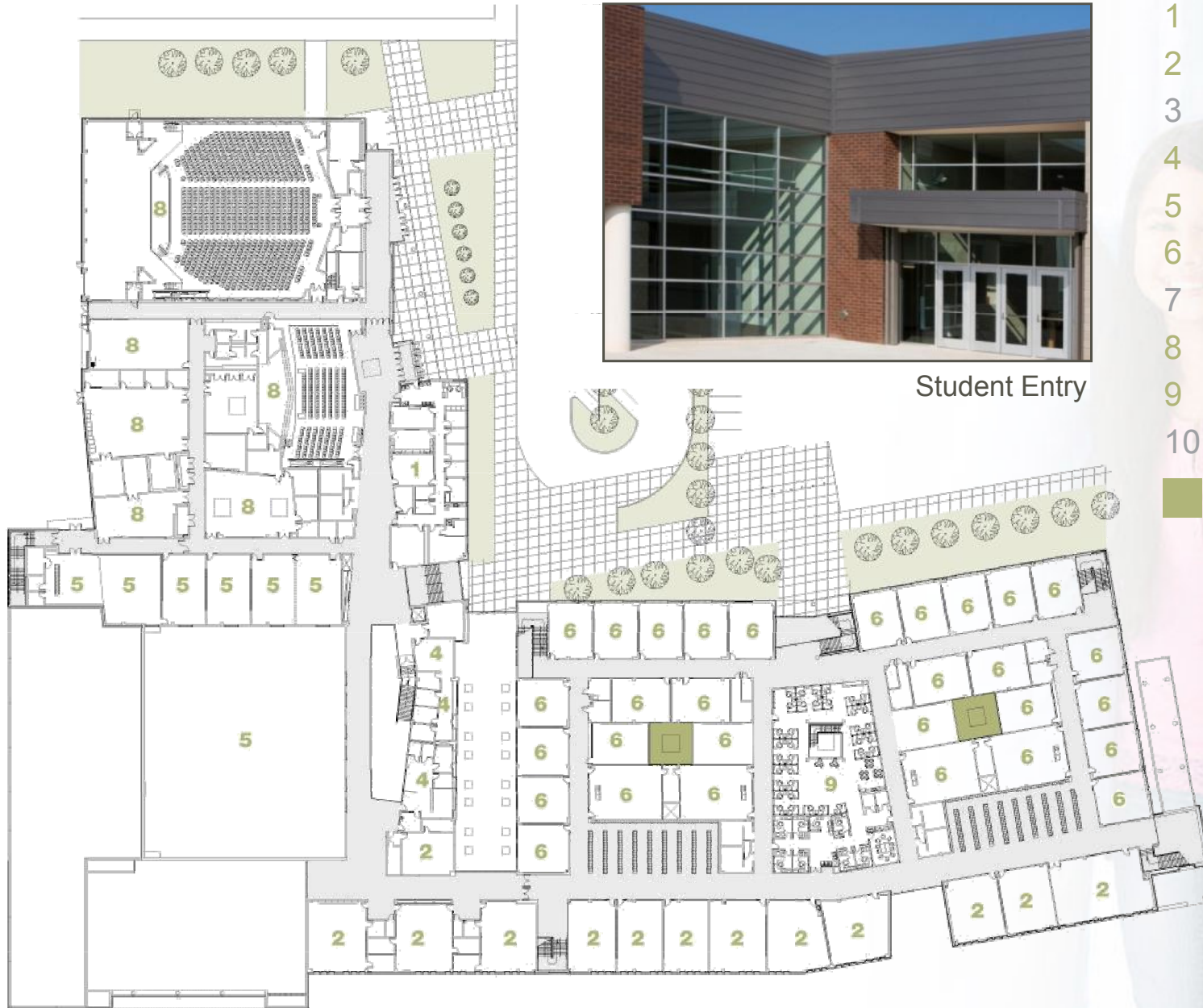
Eastern View High School is the second high school in Culpeper County, and as such had to at once unify a community while dividing student enrollment. To that end, the facility creates new civic space and elevates the overall academic rigor of the system. The success of Eastern View has led to a study of the existing high school to raise its standards to a new level.

Eastern View High School



Site Plan

Eastern View High School



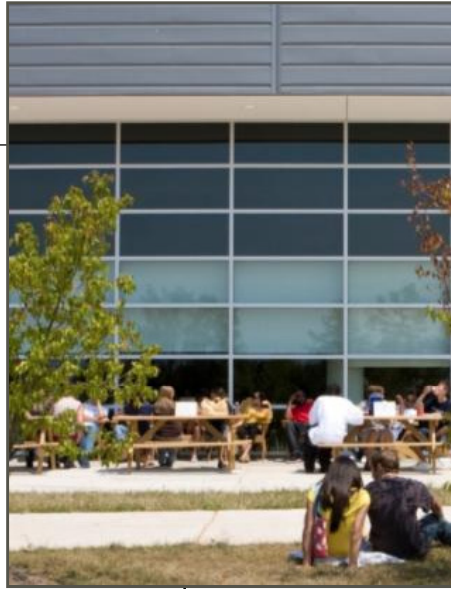
Upper Level



Student Entry

- 1 administration
- 2 career / technical
- 3 dining / kitchen
- 4 guidance student services
- 5 health / physical education
- 6 instructional house
- 7 media center
- 8 performing arts
- 9 teacher area
- 10 visual arts
- skylights

Eastern View High School



Exterior Terrace



Art Classroom

- 1 administration
- 2 career / technical
- 3 dining / kitchen
- 4 guidance student services
- 5 health / physical education
- 6 instructional house
- 7 media center
- 8 performing arts
- 9 teacher area
- 10 visual arts
- skylights

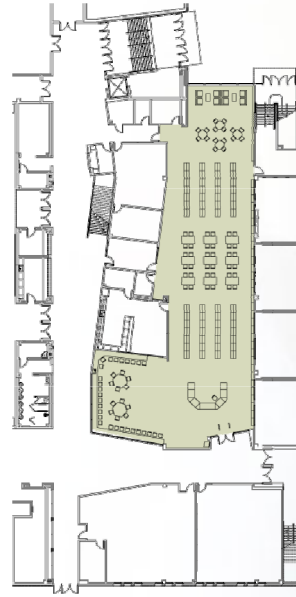


Lower Level

Eastern View High School



View of Media Center from Corridor



Glazing is used extensively throughout the school to facilitate transparency and showcase learning. Every space in the school is connected visually to another and infused with daylight and bright colors.



Mobile Furniture Allows for Flexible Spaces



Classroom Connectivity

Eastern View High School



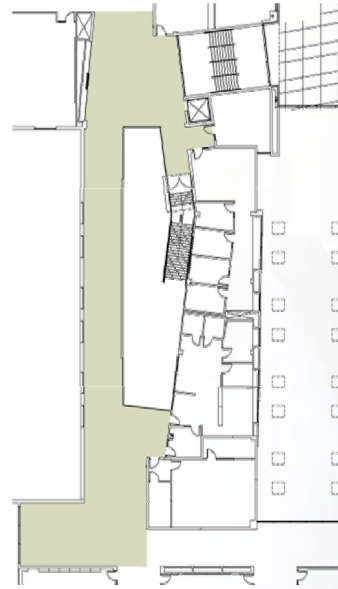
Each grade level has its own house surrounding a resource area that uses a large skylight to bring natural light into interior spaces. This flexible space can be used for student collaboration, small group instruction or large group exercises. During breaks from classes it is not uncommon to find students studying, visiting with friends or playing music here.

Flexible Spaces

Eastern View High School



Naturally Lit Corridor



The sustainable design incorporates extensive daylighting, natural ventilation, polished concrete floors, lighting controls, Energy Star compliant roofing and geothermal wells. The school was sited to protect and incorporate existing wetlands on the property.



View of Geothermal Well Field / Playing Field

Eastern View High School



Day Lit Teacher Suite



The client's vision of this school was that it be "a school wrapped around a community center." The classrooms, flexible learning areas, auditorium, media center and teacher suite are full of technological tools and agile spaces designed to promote collaboration, enrich learning and foster a sense of community.



Auditorium



Classroom

Eastern View High School



Size of Site: 66.9 acres
Student Capacity: 1,500
Area of Building: 259,218 sf
Total Project Cost: \$44,500,000
Cost per SF: \$171.67
Cost per Student: \$29,667
Space per Student: 172.81 sf



View from Reception