

# 2025 A4LE Southeast Region Conference Hosted by the Virginia Chapter

*Educational Environments Empowering Learners*

## ARCHITECTURAL EXHIBITION & AWARDS

# Jury Members

Mid-West Great Lakes: Brent Hite

Northeast: Lawrence Levato and Erica Patten

Pacific Northwest: Robert Allen

PEOPLE'S CHOICE AWARD

# Innovation Elementary School

OWNER: Prince William County Public Schools

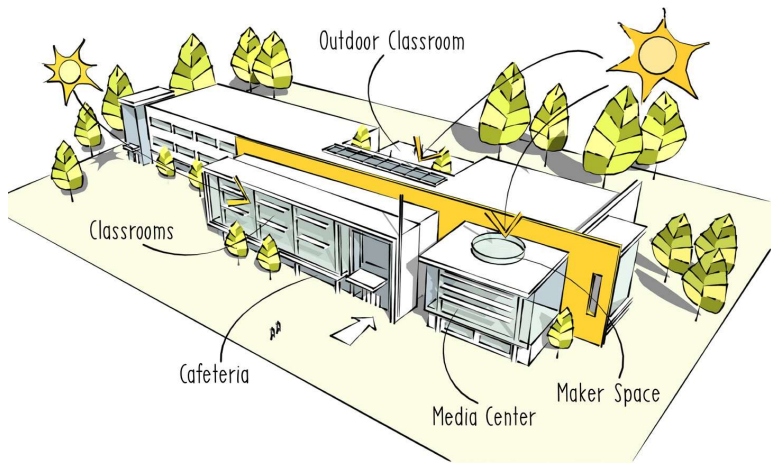
DESIGN FIRM: MOSELEY ARCHITECTS



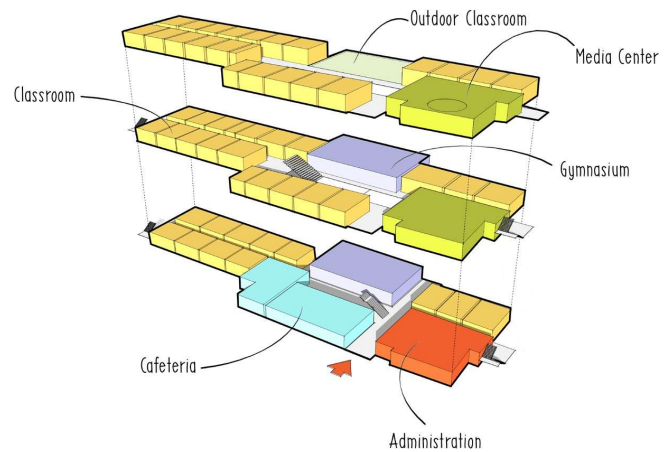
**Innovation Elementary School  
Prince William County Public Schools**

**Innovative Design for the Community**

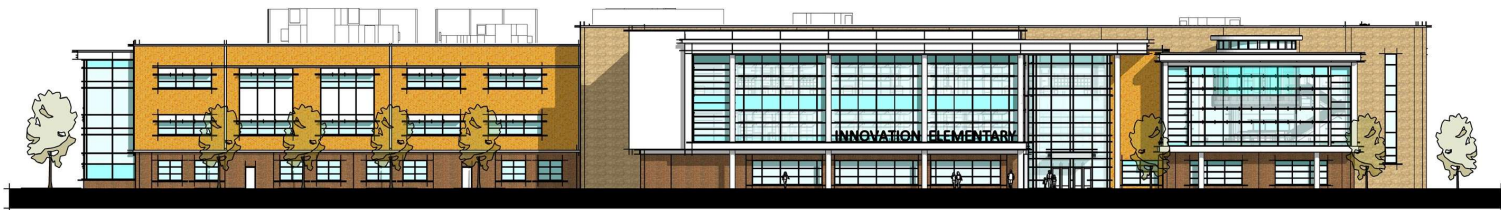
*Educational Environments  
Empowering Learners*



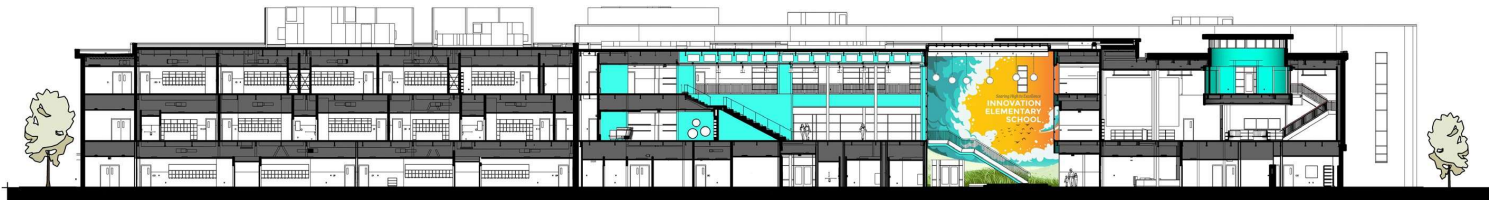
SECTIONAL VIEW OF THIRD FLOOR



SECTIONAL VIEW OF SECOND FLOOR



SOUTH ELEVATION MAIN ENTRANCE



SECTIONAL VIEW THROUGH EXTENDED LEARNING AREA AND MEDIA CENTER

*Educational Environments  
Empowering Learners*



Community Environment  
The school's location on the site of a former park fosters a strong connection to the community, with accessible playgrounds and playfields that are enjoyed by students and residents alike. The surrounding community can also utilize the gymnasium, media center, and cafeteria, as needed.

A large mural on the wall stating the school's mission statement greets visitors as they enter the school: "Soaring high to excellence.," This serves as a reminder to students and faculty alike of their shared goal, and encourages them to work towards it. Each academic wing has its own mural that incorporates a mission statement reflecting the school's core values. This not only fosters a sense of community throughout the entire student body, but inspires camaraderie within each grade level as well.



*Educational Environments  
Empowering Learners*



#### Learning Environment

As students, staff, and visitors enter Innovation Elementary School, they are greeted by an impressive two-story collaborative learning area illuminated with natural light from windows on the front of the building, and a skylight. This dynamic space encourages interaction and teamwork, providing students with opportunities to explore, create, and learn together. One feature is the learning stair, which connects the second and third floors and serves as an extension of this collaborative area. This provides extra space for group work, presentations, and story time. Additionally, student work is put on display via shelving underneath the learning stair, as well as in large display cases adjacent to the media center.



Throughout the school, extended learning areas offer students the opportunity to work autonomously with passive supervision from teachers, allowing them to explore different topics and independently enhance their learning experience. These spaces can also be used for group work, or as a space for students and teachers to work together one-on-one. Flexible seating and arrangements are available throughout the school as well to accommodate different types of learners, enabling students to move their bodies, and take a break from traditional classroom seating when needed.

## *Educational Environments Empowering Learners*



The unique maker space is accessible from both the third floor and from within the media center. This flexible area is designed to accommodate a wide range of educational needs throughout the day, from hands-on exploration and experimentation to quiet reading and story-time.

Daylighting was also a top priority in the school's design. Large windows are included throughout to allow ample natural light in the building, helping to boost students' and teachers' moods and energy levels, allowing for more dynamic and innovative teaching and learning experiences. The media center has operable shades to control daylight if needed for a dimmer, more calming environment.

Another element that supports a calm, productive learning environment is the inclusion of acoustic panels in the gymnasium. These help control noise in the space, thereby accommodating physical education activities without distracting students in nearby classrooms.

Additionally, the school has a security vestibule to ensure that all visitors are screened before entering the building, enhancing safety for students and staff, and contributing to a more secure and focused learning environment.

## *Educational Environments Empowering Learners*

# RENOVATION- ADDITION CATEGORY

# JURY COMMENTS

- Love the intentionality in spaces to help foster community connections within the school.
- Adaptive reuse and most sustainable option.
- Good integration of Natural Light in what was a former office building.
- Demonstrates good Community.
- Strong final execution of the challenge to renovate and convert a former office building into an educational space.

**AWARDED**  
**IMMANUEL CHRISTIAN SCHOOL:  
HIGH SCHOOL CAMPUS**

**OWNER: Immanuel Christian School**

**DESIGN FIRM: COOPER CARRY**

# IMMANUEL CHRISTIAN SCHOOL HIGH SCHOOL CAMPUS



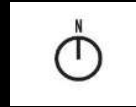
Immanuel Christian School expanded their mission and community impact by adding a high school to their program. The existing campus was not large enough to accommodate additional students. The school decided to pursue an innovative approach to expansion by searching for an existing property that could be re-envisioned as the new Immanuel Christian School High School Campus.

Following an exhaustive search, the team landed on transforming an underutilized, decaying 1970's office building into a state-of-the-art educational facility for grades 9-12. The existing, roughly 40,000 SF office building, less than a mile from the school's existing campus, consisted of 4-stories of office above a 1-story parking garage. The site is surrounded by single-family residential and bordered on the south by Indian Run Stream Valley, Fairfax County parkland. The interior office floors were renovated to meet the high school program, including classrooms, art and science labs, meeting and collaboration areas, administrative offices, and a multi-story learning stair.

The main theme of the design was centered around light. The existing building was dark and lacked access to daylight. The final solution brings the building back to life through simple creative design approaches that will allow Immanuel Christian's High School Campus to grow for decades to come.



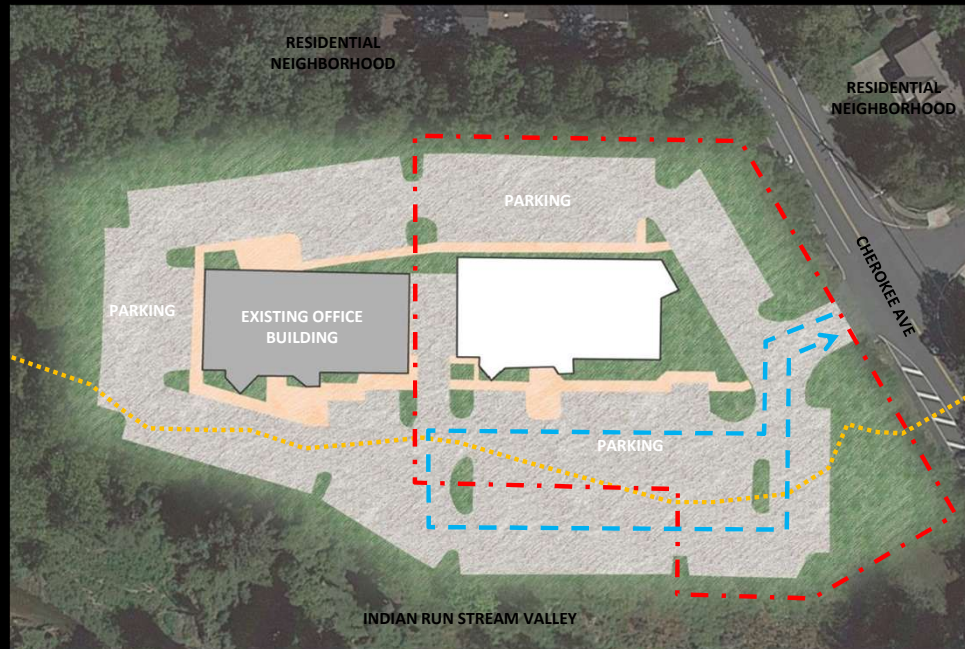
# SITE PLAN



--- PROPERTY LINE

--- DROP OFF / PICK UP

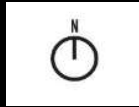
..... FLOOD PLAIN



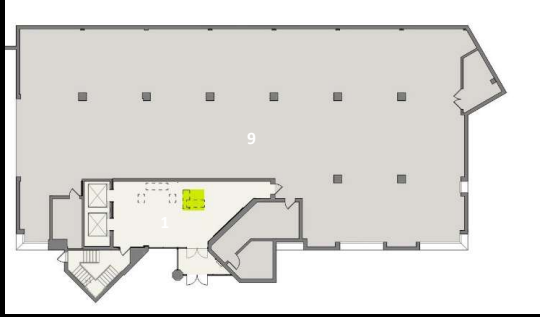
# FLOOR PLANS

**LEGEND**

- ENTRANCE LOBBY
- CLASSROOM
- SCIENCE LAB
- ART ROOM
- GATHERING / COLLABORATION
- ADMINISTRATION
- LOCKER COMMONS
- LEARNING STAIRS
- PARKING



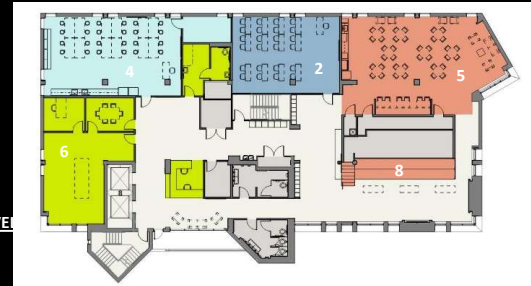
GARAGE LEVEL



FIRST LEVEL



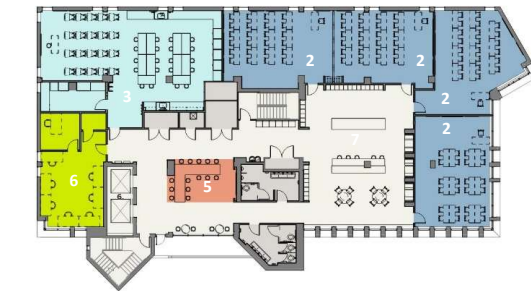
SECOND LEVEL



THIRD LEVEL



FOURTH LEVEL



# COMMUNITY & CONNECTION

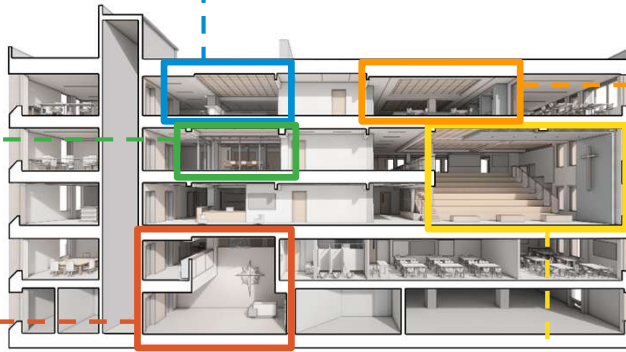


COLLABORATION AREAS



LOCKER COMMONS

ENTRANCE LOBBY



CENTRAL LEARNING STAIRS



The architecture purposefully creates opportunities to develop connections through a variety of learning and gathering spaces. A two-story central learning stair was carved into the heart of the building to bring the school together for formal and informal events. The locker commons on the upper floors integrates multi-functional seating and collaboration areas. A variety of break-out and meeting spaces are scattered around and tucked into spaces, making efficient use of the entire building. The school opted for a lounge space in lieu of traditional dining hall to bring together students and staff for a

# BEFORE & AFTER



**The Physical Environment**  
The original 1970's office building was completely reimagined as a modern school building for Immanuel Christian School. In addition to building code challenges, the team was confronted with outdated systems, finishes, layout, and construction phasing. A creative approach allowed phased occupancy while sequentially replacing the building systems and renovating the interiors. The selected finishes integrate a palette of bright whites, warm natural materials, and blues coinciding with the school brand and creating a light, bright learning environment.



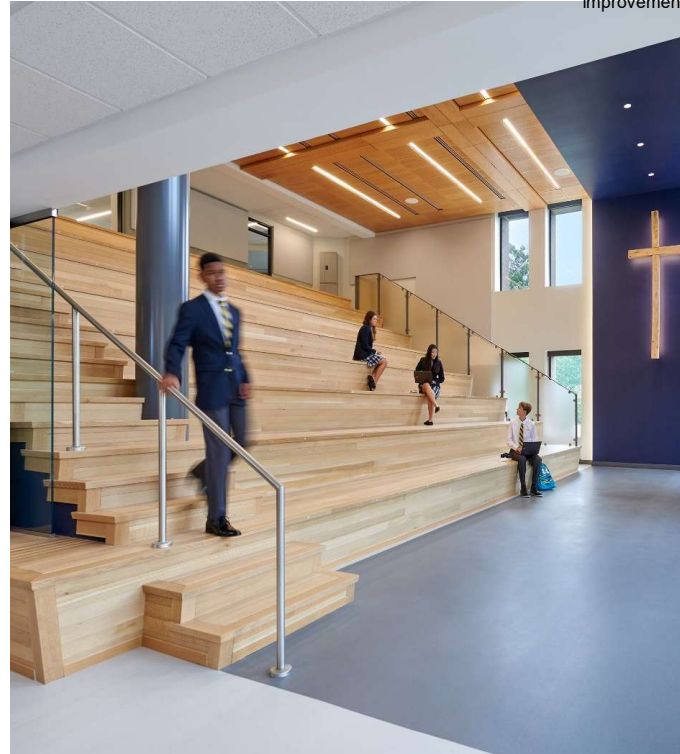
ENTRANCE LOBBY

# BEFORE & AFTER



## **Innovative Approach**

The design team led an engagement process as the initial phase. Student, parent, and staff feedback was collected during these discussions. The design was a direct response to the request for spaces that provide connections to others, a sense of community, and to create an inviting, friendly, welcoming and safe environment. The team took the opportunity to conduct a post occupancy survey and discussion prior to beginning design on the second phase. The feedback was critical to improving the design and process by understanding areas of success and opportunities for improvement.



LEARNING STAIRS

# PROJECT IDENTIFICATION

**NAME AND LOCATION OF THE PROJECT:**

Immanuel Christian School High School Campus, Alexandria, VA

**OWNER:** Immanuel Christian School

**OWNER'S REPRESENTATIVE:** Mandy Croushore

**DESIGN FIRM:** Cooper Carry

**PRINCIPAL IN CHARGE:** Brent Amos, AIA, LEED AP

**PROJECT DESIGNER:** Maureen Wiechert, AIA, LEED AP, WELL AP

**CONSTRUCTION ADMINISTRATION:** Heidi Leinbach, AIA, LEED AP, Fitwell Ambassador

**EDUCATIONAL PLANNER:** Megan Fagge, AIA

**ENGINEERS:**

**MEP:** Greenman-Pederson, Inc. (Phase 1);

Interface Engineering (Phase 2, 3, & 4)

**STRUCTURAL:** McMullen

**ACOUSTICS:** Miller, Beam, & Paganelli, Inc.

**BUILDER:**

Scott Long (Phase 1); Forrester Construction (Phase 2 & 3);

C-Con (Phase 4)

**PHOTOGRAPHER:** Judy Davis



CATEGORY  
NEW SCHOOL CONSTRUCTION

# JURY COMMENTS

- Exemplary access to natural daylight throughout the building.
- Centralized extended learning space provides unique learning moments for all students.
- Sustainable design and exterior learning spaces.
- Appropriate wayfinding.
- Mural sets a positive tone for the day.
- Building incorporates brightness and fun.

# Bronze Award

## Innovation Elementary School

OWNER: Prince William County Public Schools

DESIGN FIRM: MOSELEY ARCHITECTS

# Bronze Award

## Innovation Elementary School

OWNER: Prince William County Public Schools

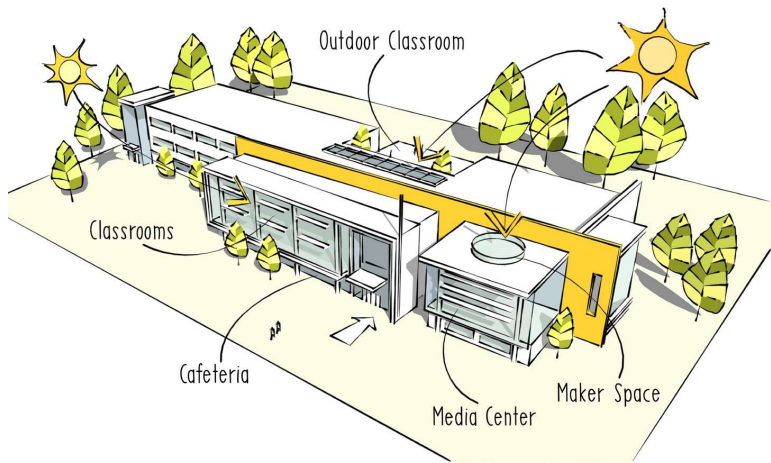
DESIGN FIRM: MOSELEY ARCHITECTS



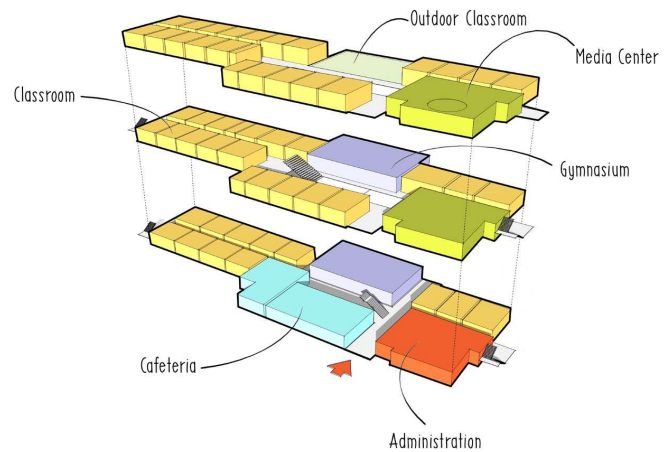
**Innovation Elementary School  
Prince William County Public Schools**

**Innovative Design for the Community**

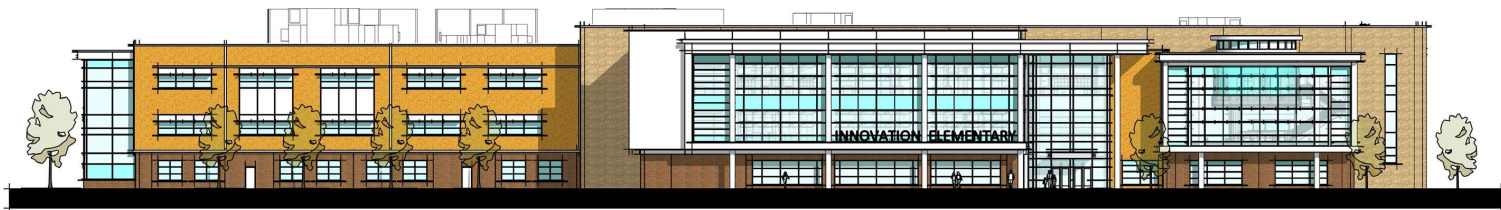
*Educational Environments  
Empowering Learners*



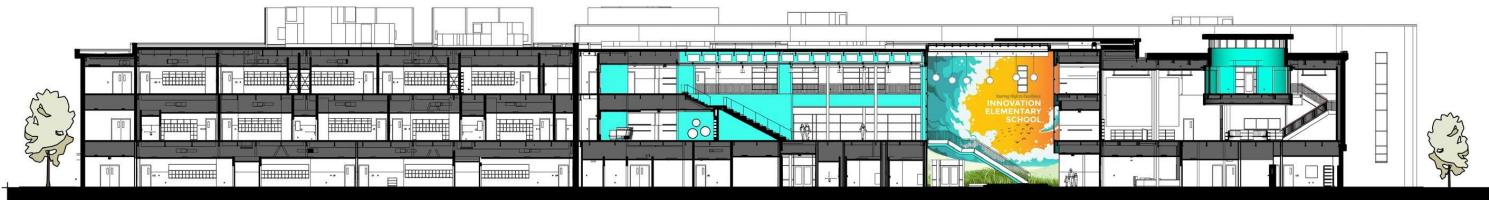
SECTIONAL VIEW OF THIRD FLOOR



SECTIONAL VIEW OF SECOND FLOOR



SOUTH ELEVATION MAIN ENTRANCE

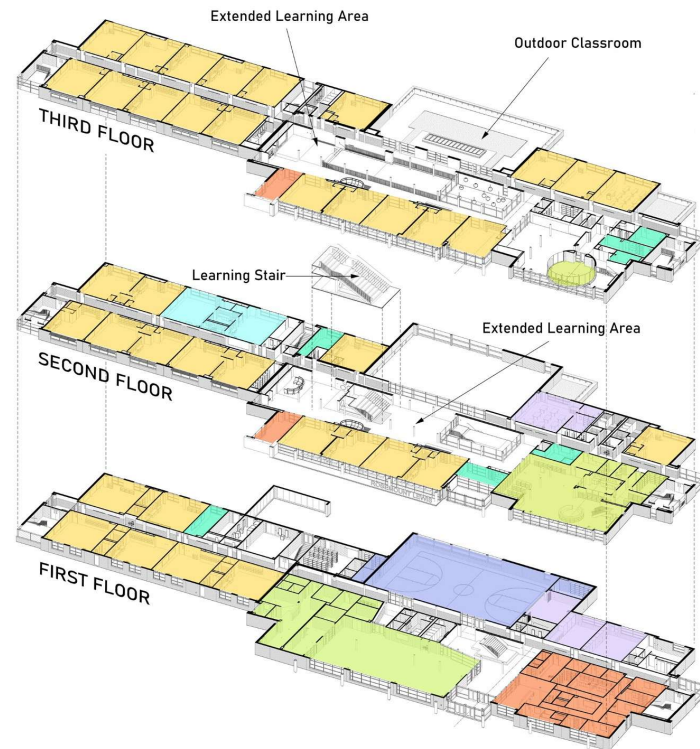


SECTIONAL VIEW THROUGH EXTENDED LEARNING AREA AND MEDIA CENTER

*Educational Environments  
Empowering Learners*



- |   |                           |   |                  |
|---|---------------------------|---|------------------|
| 1 | New School                | 5 | Staff Parking    |
| 2 | Visitor and Staff Parking | 6 | Service Entrance |
| 3 | Bus Parking and Loading   | 7 | Playgrounds      |
| 4 | Student Drop-off          | 8 | Playfields       |



- |                |                   |
|----------------|-------------------|
| Administration | Fine Arts         |
| Athletics      | Food Services     |
| Classrooms     | Media Center      |
| Resources      | Special Education |

*Educational Environments  
Empowering Learners*



Community Environment  
The school's location on the site of a former park fosters a strong connection to the community, with accessible playgrounds and playfields that are enjoyed by students and residents alike. The surrounding community can also utilize the gymnasium, media center, and cafeteria, as needed.

A large mural on the wall stating the school's mission statement greets visitors as they enter the school: "Soaring high to excellence.," This serves as a reminder to students and faculty alike of their shared goal, and encourages them to work towards it. Each academic wing has its own mural that incorporates a mission statement reflecting the school's core values. This not only fosters a sense of community throughout the entire student body, but inspires camaraderie within each grade level as well.



*Educational Environments  
Empowering Learners*



#### Learning Environment

As students, staff, and visitors enter Innovation Elementary School, they are greeted by an impressive two-story collaborative learning area illuminated with natural light from windows on the front of the building, and a skylight. This dynamic space encourages interaction and teamwork, providing students with opportunities to explore, create, and learn together. One feature is the learning stair, which connects the second and third floors and serves as an extension of this collaborative area. This provides extra space for group work, presentations, and story time. Additionally, student work is put on display via shelving underneath the learning stair, as well as in large display cases adjacent to the media center.



Throughout the school, extended learning areas offer students the opportunity to work autonomously with passive supervision from teachers, allowing them to explore different topics and independently enhance their learning experience. These spaces can also be used for group work, or as a space for students and teachers to work together one-on-one. Flexible seating and arrangements are available throughout the school as well to accommodate different types of learners, enabling students to move their bodies, and take a break from traditional classroom seating when needed.

## *Educational Environments Empowering Learners*



The unique maker space is accessible from both the third floor and from within the media center. This flexible area is designed to accommodate a wide range of educational needs throughout the day, from hands-on exploration and experimentation to quiet reading and story-time.

Daylighting was also a top priority in the school's design. Large windows are included throughout to allow ample natural light in the building, helping to boost students' and teachers' moods and energy levels, allowing for more dynamic and innovative teaching and learning experiences. The media center has operable shades to control daylight if needed for a dimmer, more calming environment.

Another element that supports a calm, productive learning environment is the inclusion of acoustic panels in the gymnasium. These help control noise in the space, thereby accommodating physical education activities without distracting students in nearby classrooms.

Additionally, the school has a security vestibule to ensure that all visitors are screened before entering the building, enhancing safety for students and staff, and contributing to a more secure and focused learning environment.

## *Educational Environments Empowering Learners*



Size of Site	19 acres
Student Capacity	850
Area of Building	129,661 SF
Total Project Cost	\$35,133,388
Cost per Square Foot	\$271
Cost Per Student	\$41,333
Space Per Student	153 SF per student

*Educational Environments  
Empowering Learners*



INNOVATION ELEMENTARY SCHOOL  
Manassas, VA

School Division PRINCE WILLIAM COUNTY PUBLIC  
SCHOOLS

Superintendent DR. LATANYA MCDADE

Design Firm MOSELEY ARCHITECTS

Principal in Charge WILLIAM H. RIGGS, III, AIA

Project Designer KENNY DURRETT

Construction Administrator ROSEANN MARRERO

Education Planner MOSELEY ARCHITECTS

Landscape Architect IMEG

Mechanical, Electrical,  
Structural, and Fire Protection  
Engineering MOSELEY ARCHITECTS

Civil Engineering IMEG

Builder V.F. PAVONE CONSTRUCTION COMPANY

Photographer STUDIO HDP

*Educational Environments  
Empowering Learners*

# JURY COMMENTS

- Centralized media center and STEM spaces help create an innovative heart to this design.
- Extended learning areas into the corridor provide additional opportunities.
- Colors are appropriate for an elementary school.
- Mural connects to community.
- Upper-level outdoor classrooms are very nice.

# SILVER AWARD

## QUINTON ELEMENTARY SCHOOL

OWNER: New Kent County Public Schools

DESIGN FIRM: MOSELEY ARCHITECTS



**Quinton Elementary School**  
**New Kent County Public Schools**

**Building for Growth – Creating Communities**

---

*Educational Environments Empowering Learners*



- |   |                              |   |                         |
|---|------------------------------|---|-------------------------|
| 1 | New School                   | 5 | Visitor Parking         |
| 2 | Outdoor Learning Environment | 6 | Play Field              |
| 3 | Bus Parking and Loading      | 7 | Hard Surface Play Areas |
| 4 | Staff Parking                | ▼ | Main Entrance           |



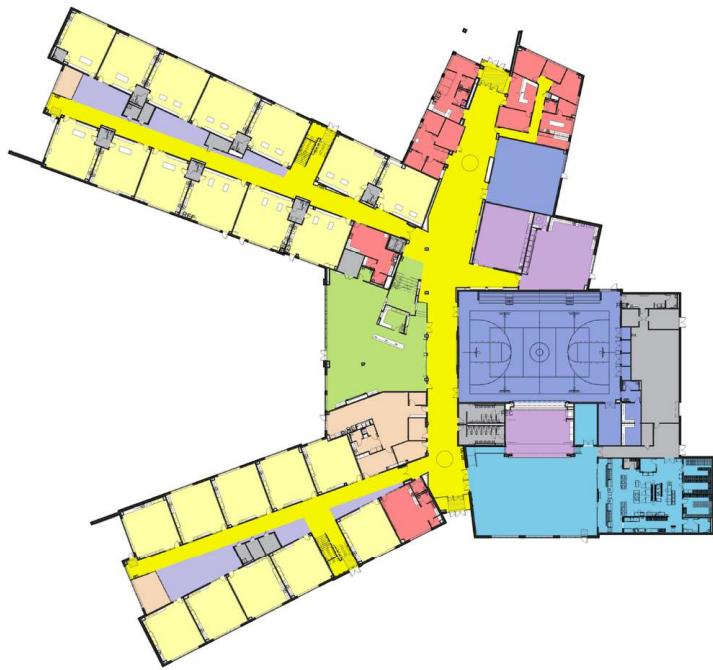
**Planning and Design Process**

New Kent County Public Schools (NKCPS) faced a pressing need for a new elementary school due to county growth and overcrowded existing schools. The collaborative design process harnessed the collective input of community members and stakeholders.

Engaging extensively with program department chairs, teachers, and staff, the design team conducted thorough assessments to identify priorities, strengths, and areas for improvement in the existing educational framework. This collaborative approach ensured that the final design not only met the functional needs of the school but also reflected the aspirations and needs of the community.

With the project on hold for a year due to the COVID-19 pandemic, the design team used this time effectively to undergo a thorough value engineering (VE) process. Despite delays and uncertainties, the project successfully adhered to timelines and budget targets, a testament to the commitment of all stakeholders involved in preserving the quality and functionality of the new school.

*Educational Environments Empowering Learners*



FIRST FLOOR

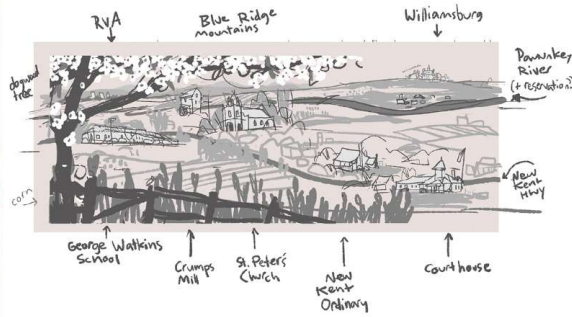


SECOND FLOOR

- |   |   |   |   |
|---|---|---|---|
| <span style="color: red;">■</span> Administration | <span style="color: yellow;">■</span> Classrooms        | <span style="color: lightblue;">■</span> Food Services  | <span style="color: pink;">■</span> Outdoor Learning Labs |
| <span style="color: blue;">■</span> Athletics     | <span style="color: purple;">■</span> Extended Learning | <span style="color: green;">■</span> Media Center       | <span style="color: grey;">■</span> Support/MEP/Storage   |
| <span style="color: yellow;">■</span> Circulation | <span style="color: purple;">■</span> Fine Arts         | <span style="color: orange;">■</span> Special Education |   |

---

*Educational Environments Empowering Learners*

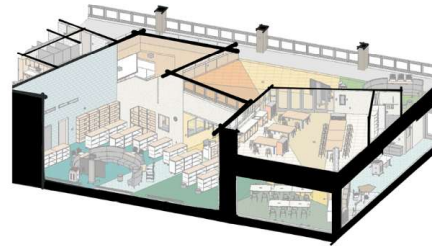
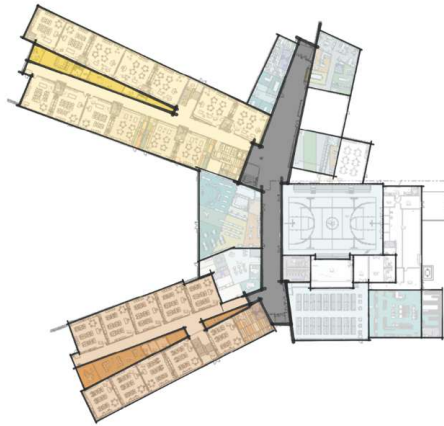


### Community Environment

Quinton Elementary School is located on the east end of historic New Kent County and is a source of pride for community members. One of the most striking features of Quinton Elementary School is a large mural in the media center, painted by a local artist. This mural not only celebrates the rich heritage of the New Kent community but also serves as an educational tool, depicting regional historical landmarks and significant events from Virginia's history. The mural establishes a sense of community that greets students, staff, family and visitors and wraps into the media center.



*Educational Environments Empowering Learners*



### Physical Environment

Quinton Elementary School boasts a meticulously crafted physical environment that prioritizes both color and functionality. Careful consideration was given to color and material selection throughout the project. This process began by assigning each grade level its own distinct color to foster a sense of identity and community within the school. This color scheme extends from the grade wings to the communal spaces such as the media center and STEM lab, where a harmonious blend of the colors signifies the interconnectedness of the school's diverse student body.

The depth and effectiveness of color palette and materials selection are on full display in the media center, which is centrally located along the main street corridor. The media center offers three educational spaces: a classroom, a campfire area, and individual learning zone. Students gather in the classroom area for group discussions. Then the class moves to the campfire area where students listen to books while seated in a semicircle focused on the presenter, resembling a campfire setting. The individual learning area offers students comfortable seating that wraps around for a cozy setting and an elevated platform with a book nook for variation in seating. Here students have the opportunity to read books they select to foster their love for reading.

Centrally located on the main corridor, the media center was an ideal place to incorporate additional community spaces. The glass garage doors put learning on display and open to create a flexible event space with the support of a media wall, which includes interactive technology boards surrounded by a glass dry erase surface for messaging.

The media center is blanketed with the colors from each academic wing to create a visual connection and a feeling of comfort for all students.



*Educational Environments Empowering Learners*



### Physical Environment

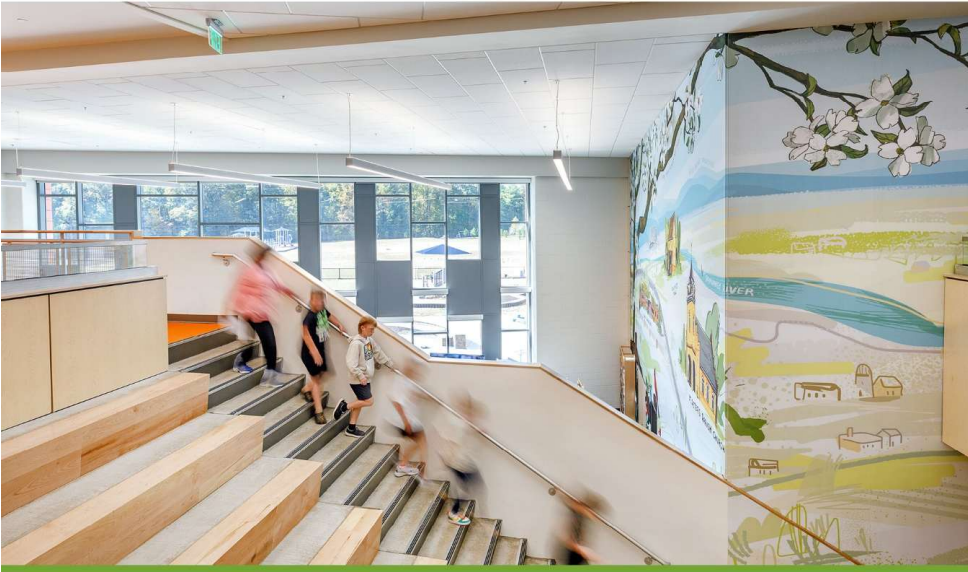
From the early stages of development, design efficiency was a key focus, evident in features such as the dual-sided stage that opens seamlessly to both the cafeteria and gymnasium to create a large community space. Acoustical panels and partitions enable versatility, allowing for concurrent performances and presentations without disruption.

Anticipating the county's rapid growth, an addition was developed for a master plan to accommodate the community's evolving needs. Innovative learning spaces, such as the learning stair, campfire area in the media center, and extended learning spaces, provide students with diverse opportunities for collaboration, exploration, and creativity.

The STEAM lab serves as a hub for hands-on learning experiences, empowering students to engage with science, technology, engineering, arts, and mathematics in a dynamic and immersive environment. The STEAM lab is complemented by an adjacent, large extended learning area. The social stair serves as a gathering space, presentation platform, and transportation hub connecting the media center and STEAM lab.



*Educational Environments Empowering Learners*



**Quinton Elementary School**  
NEW KENT, VIRGINIA

**School Division** New Kent County Public Schools

**Superintendent** Dr. Brian Nichols

**Owner Contact** Tim Pollock

**Design Firm** Moseley Architects

**Principal in Charge** Stephen Halsey, AIA, REFP

**Project Designer and Manager** Andrew Smolak

**Construction Administrator** Emily Hogan, AIA

**Civil Engineer** Timmons Group

**M/E/P, Structural, and Fire Protection Engineering** Moseley Architects

**Builder** Heartland Construction

**Photographer** Chris Cunningham Photography  
QPH Photo

*Educational Environments Empowering Learners*

# JURY COMMENTS

- A vibrant design that serves multiple purposes.
- An exemplary model of what a school can mean to its community and community integration.
- Use of natural light.
- "So much for so many" (community engagement in design and community use).
- Spaces reach a wide variety of learning models
- Includes a powerful core space.
- Impressive to achieve a Net Zero Award in a 5 - story school building.

# **GOLD AWARD**

## **ALEXANDRIA CITY HIGH SCHOOL: MINNIE HOWARD CAMPUS**

**OWNER:** Alexandria City Public Schools Public Schools

**DESIGN FIRM:** Perkins Eastman Architects

**Associate Architect:** Maginess + del Ninno Architects



**ALEXANDRIA CITY  
HIGH SCHOOL  
MINNIE HOWARD CAMPUS**

**Designed to actively engage the community and dramatically enhance the student experience.**

“As I stand here my heart is full, knowing that this building is not just a structure, but a symbol of our commitment to ensuring the equitable access to the best education for every student in Alexandria. It’s a place where dreams will be nurtured, talents will be cultivated, and opportunities will abound for years to come.”

*- ACPS Chief Operating Officer Alicia*

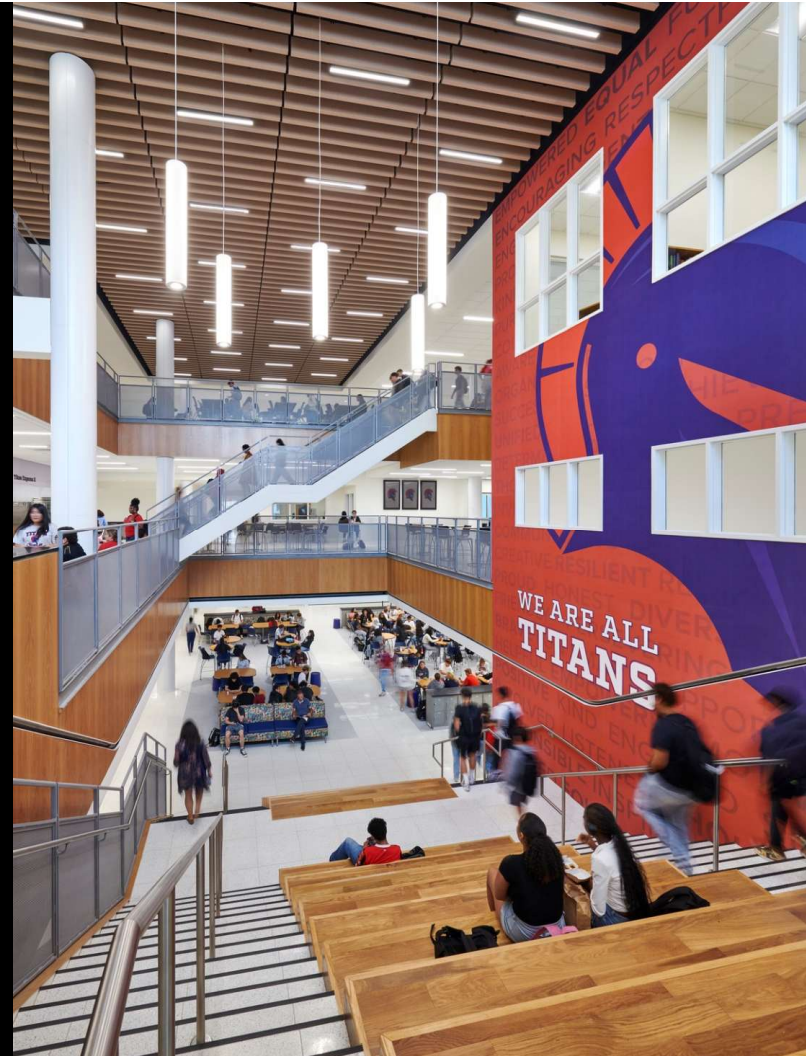
*Hart*



## Community & Learning Environment

### Dramatically Enhancing the Student Experience

Alexandria City High School at the Minnie Howard Campus is a model of equity, designed to significantly enrich the student experience and strengthen community connections. Expanded community programming, including the Teen Wellness Center, Youth & Family Resource Center, Early Childhood Center, and a new aquatic complex, help to foster healthy and resilient students and families. At the heart of the school is the visionary “creative commons” atrium, a dynamic space that engages Career and Technical (CTE) and specialty labs with social areas and dining services to foster a professional and collegiate ambiance. ACHS is pursuing Net Zero Energy and LEED Gold certification, to create a sustainable

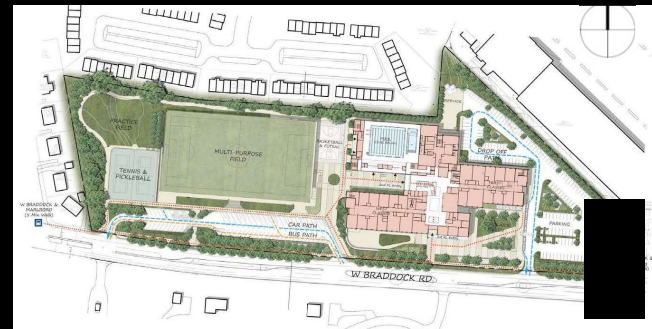




# A Connected Community Environment High School Network

The transformed Minnie Howard campus of Alexandria City High School is a key part of the district's Connected High School Network (CHSN), supporting Alexandria City Public Schools' vision of equity and a richer experience for every high school student.

Located half a mile from the main King Street Campus, the Minnie Howard campus enables every student across the high school network to have access to new project-based learning and Career and Technical Education programming in a dynamic student-centered environment.





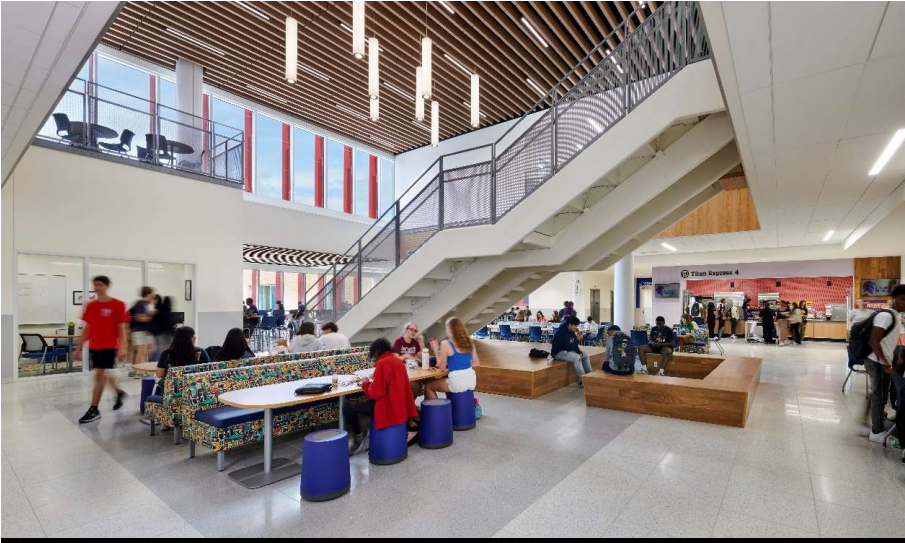
## The Creative Commons

### Learning & Community Environment

At the heart of the school is the “Creative Commons,” a dynamic crossroads that is the centerpiece of a new student experience. Created by re-imagining the traditional large institutional cafeteria, smaller, more welcoming dining areas and serveries have been distributed across every level of the building, creating more inviting, restorative spaces for students to gather and socialize during meals. Dining becomes extended learning environments, enabling surrounding CTE and specialty labs to open directly out into the space. This innovative approach not only enhances student engagement but also ensures that every square foot of the building remains active throughout the day.

## Student & Community Health & Well-Being

By partnering with the city's Department of Recreation, Parks & Cultural Activities, the school also becomes a center of activity for the larger Alexandria community. The new aquatics center, featuring a 12-lane competition pool and an instructional pool, two large gyms, and the field can be accessed and operated independently from the rest of the school—becoming one of the city's largest recreation facilities after hours and on weekends.



## Physical Environment

# Pursuing Net Zero Energy

Achieving net zero energy (NZE) and creating a healthy, high-performance learning environment were synergistic goals throughout the process. To meet NZE, the design team set an ambitious energy budget for the campus which was made even more ambitious by the large aquatic facility. No indoor aquatic center had achieved NZE due to the energy intensive systems required. From the very first sketch, the design was optimized to reduce energy by ensuring proper solar orientation, maximizing natural daylight while minimizing heat gain and glare. As the design developed, a high-performance building envelope, a conservative window-to-wall ratio, and exterior shading systems incorporating photovoltaic arrays continued to optimize the building's performance. Additionally, the site's existing renewable geothermal system was significantly expanded to reduce reliance on mechanical heating and cooling. Energy and daylight analyses were used throughout the design process to optimize the building performance. Most importantly, in conjunction with a focus on enhanced acoustics, ventilation, and thermal comfort, these strategies all contributed to significantly enhanced Indoor Environmental Quality, creating a powerful synergy between

**THANK YOU!**

SEE YOU IN 2026