

Architectural Awards

Association for Learning Environments Virginia Chapter Annual Conference

March 3-5, 2024

Jurors

Larry Levato
Callie Gaspary
Krystal Mc Gee
Ran Ilkovitch

Alice Fleet Elementary School Arlington County

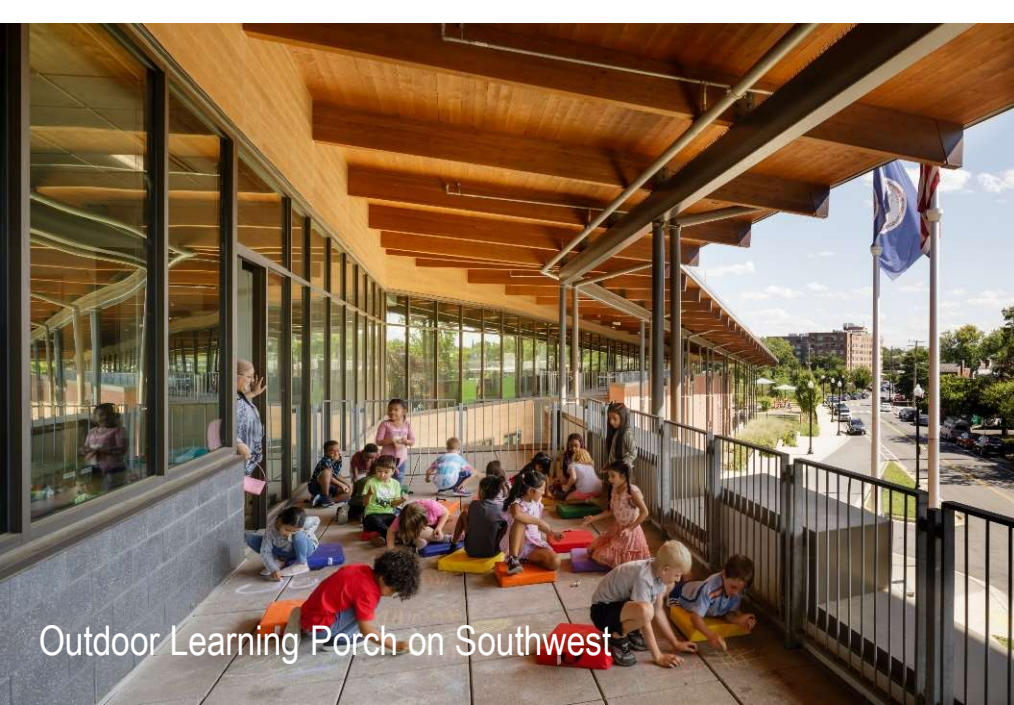
Jury Comments

- Beautifully nestled into urban site
- Innovative
- Building as learning tool well articulated
- Building organization and site responsive to community
- Intriguing learning environments
- Variety of indoor and outdoor learning spaces

Alice West Fleet Elementary School

Arlington Public Schools





Outdoor Learning Porch on Southwest



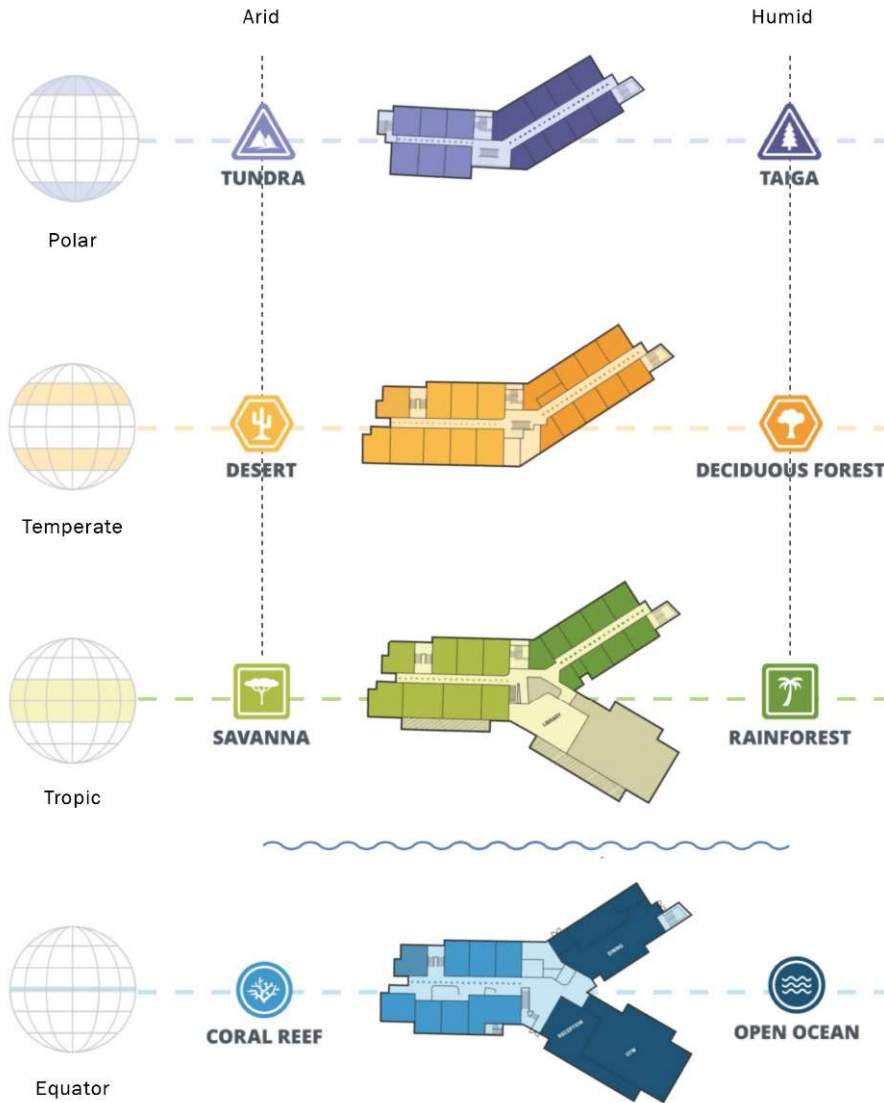
Turf Play Field off Southeast Facing Gym Wing



South Facing Facade

TEACHING TOOLS

The school is organized around the earth's major biomes. Children enter the building "underwater" in the ocean and moving up in the building (and up in grade levels) is a process of moving from the equator to the poles. Classrooms are named after animals found in their respective habitats. Entire ecosystems can be explored via a field trip inside the school.



Middle Road Elementary School Prince George County

Jury Comments

- Nice opportunities for hands on learning
- Good visibility from hallways
- Collaboration provide a nice job of spatial definition to anchor leaning activities from pathways



**Middle Road Elementary School
Prince George County Public Schools**

You Belong Here



Community Environment

"You belong in Prince George County"

These words, boldly printed on the water tower behind Middle Road Elementary School, became more than just a statement — they evolved into a guiding principle and theme for this entire project. Despite the challenges presented by the COVID-19 pandemic in 2020, the school's construction became a symbol of hope and collaboration. A remarkable bond flourished among community members, students, parents, the school system, the design team, and the general contractor, transforming the project into a labor of love.

On ribbon cutting day, the entire community was invited to celebrate the opening of the new educational hub and beacon. Families, supporters, students, and staff showed their commitment to PGCPs with more than 200 in attendance.



Middle Road Elementary School



Learning Environment

The incorporation of large double-sided glass display cases at the maker space and art studio near the main entrance underscores the school's commitment to showcasing hands-on learning and innovation, inviting curiosity and exploration from students and passersby.

Middle Road Elementary School embraces technology as a tool for exploration and discovery, with resources integrated seamlessly into the learning environment. From interactive whiteboards to dedicated maker-spaces, students have access to a wide range of tools and technologies that encourage creativity, critical thinking, and problem-solving skills. By fostering a collaborative and tech-enabled learning environment, Middle Road Elementary School empowers students to become life-long learners and active participants in their own education, preparing them for success in an ever-changing world.



Middle Road Elementary School

Architectural Award

People's Choice Award

New Elementary School Design Category

Name of School

New Elementary School Design Category

Silver Award

Jury Comments

- School is whimsical, has age appropriate and diverse opportunities for all types of learning
- Flexible learning communities provide variety of spaces and also increase capacity
- Good use of open green space in urban setting

Cardinal Elementary School

Arlington County Public Schools

VMDO Architects

Cardinal Elementary School

Arlington Public Schools



1 Existing

Combination of existing school attached to county library. School + library share spaces in 2-story connector.

2 Demolition

Demolition of 1-story building with radial classrooms that did not meet needs of new elementary school.

3 Additions

Add 4-story classroom wing, adjacent to glassy corridor with shared school resources and common programs.



Existing Entry



New Entry after Renovation / Addition



Ground Floor

Floor Plan Key

- Mechanical, Toilets, Storage
- Circulation, Breakout Space
- Library, Dining Commons
- Gym + Stage
- Small Group Instruction
- Classroom
- Art + Music
- Staff Support, Office, Admin.



Second Floor



Third / Fourth Floors



program organization

The four-story bar adjacent to the playground houses the gym and the learning communities while the school library and arts classrooms inhabit a portion of the existing building. The main entrance, administration suite, and cafeteria are centrally located.



Student Break-out Spaces



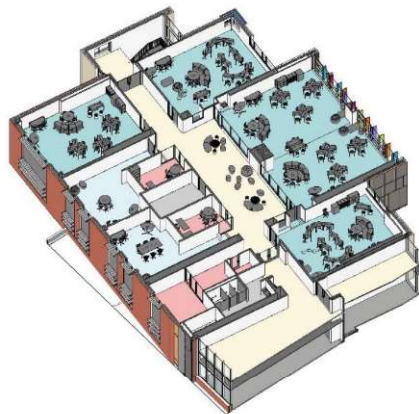
Classroom with Operable Garage Doors



Renovated Library

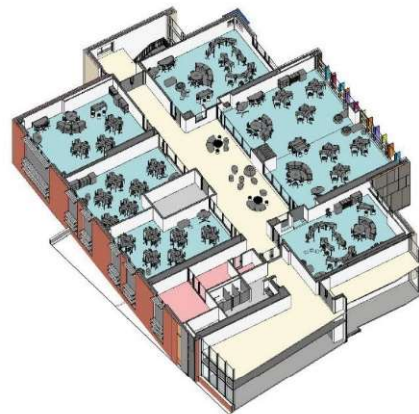


Outdoor Dining Terrace



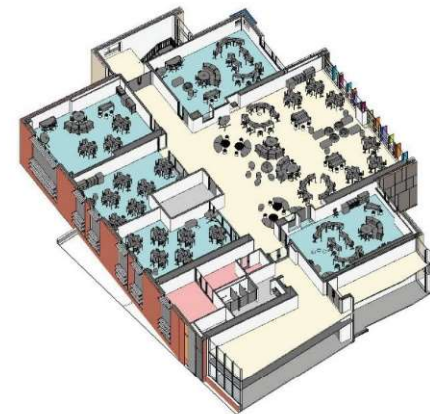
↑ Base Design

The base design shows five classrooms with two supporting small-group instruction rooms.



↑ Expanded Capacity

Removing strategic partitions increases learning community capacity by 40%.



↑ Open Studio

Operable partitions and sliding doors allow for maximum space flexibility.



flexible learning communities

Storefront glazing and sliding doors in classrooms foster connections across the central breakout space. Each learning community was designed to accommodate increased student capacity in anticipation of community growth.



joyful spaces for every learner

Designed with careful attention to the needs of primary and elementary learners, interactive places to slide, crawl, and nestle punctuate each learning community and add an air of joy to the school.



↑ local

Topographic map wall that abuts the cafeteria stair calls out significant points of Arlington's geography and local history.



↑ global

At the entry of each grade level's learning community, a topographic map of the wing's corresponding continent calls out the wing's featured cities.



↑ galactic!

The entry lobby includes a scale model of the solar system, including a sun whose color changes reflect the school's current energy use and production.



building as a teaching tool - the whole world under one roof

Through a series of graphic and three-dimensional installations of the local, global, and galactic information, the school becomes a living geography lesson that broadens students' understanding of the various cultures and environments of the world.

New Elementary School Design Category

Gold Award

Jury Comments

- Inclusivity, exceptional facility, variety of learning spaces meets many needs and provides flexibility for growth
- Allows for differentiated learning with media center at heart
- Community integration into murals in media center
- Openness between media center and public spaces integrates learning to all areas of school

Quinton Elementary School

New Kent County Public Schools

Moseley Architects



- | | | | |
|---|------------------------------|---|-------------------------|
| 1 | New School | 5 | Visitor Parking |
| 2 | Outdoor Learning Environment | 6 | Play Field |
| 3 | Bus Parking and Loading | 7 | Hard Surface Play Areas |
| 4 | Staff Parking | ▼ | Main Entrance |



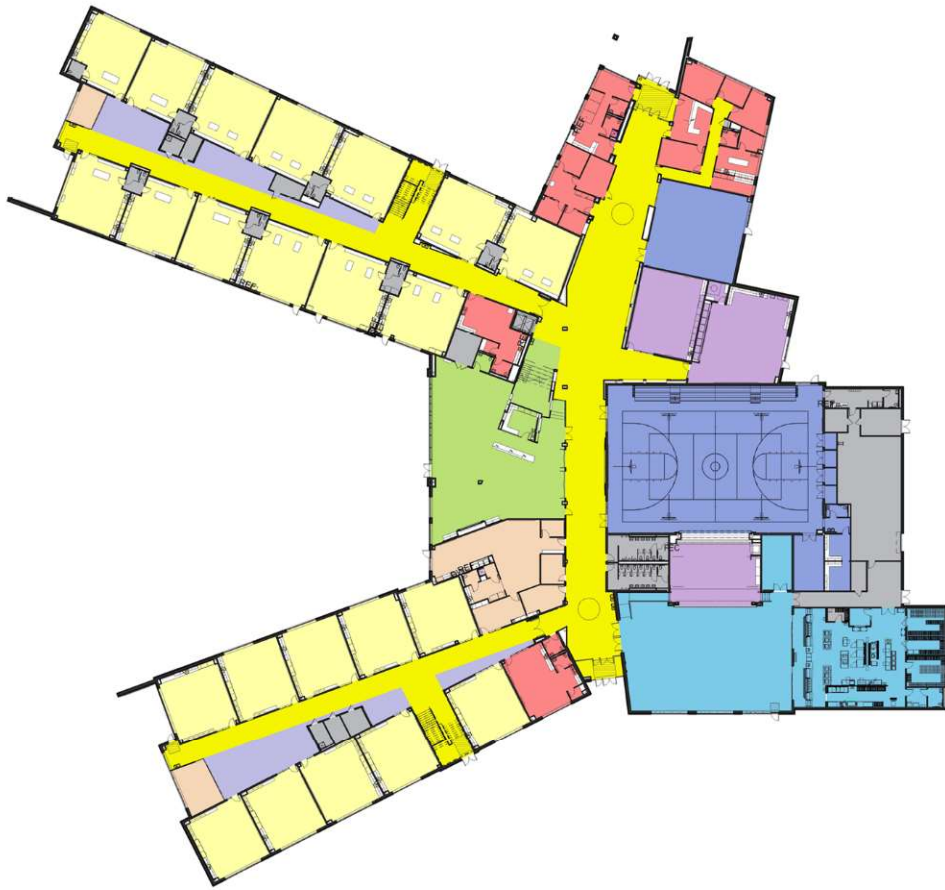
Planning and Design Process

New Kent County Public Schools (NKCPs) faced a pressing need for a new elementary school due to county growth and overcrowded existing schools. The collaborative design process harnessed the collective input of community members and stakeholders.

Engaging extensively with program department chairs, teachers, and staff, the design team conducted thorough assessments to identify priorities, strengths, and areas for improvement in the existing educational framework. This collaborative approach ensured that the final design not only met the functional needs of the school but also reflected the aspirations and needs of the community.

With the project on hold for a year due to the COVID-19 pandemic, the design team used this time effectively to undergo a thorough value engineering (VE) process. Despite delays and uncertainties, the project successfully adhered to timelines and budget targets, a testament to the commitment of all stakeholders involved in preserving the quality and functionality of the new school.

Quinton Elementary School



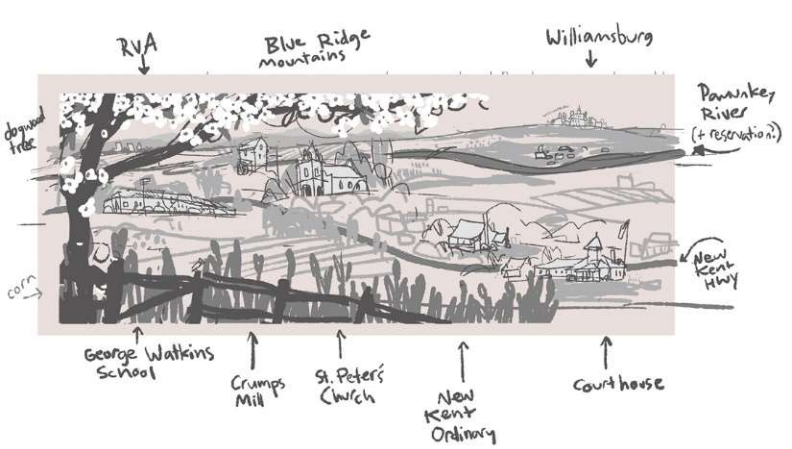
FIRST FLOOR



SECOND FLOOR

- | | | | |
|--|---|---|---|
|  Administration |  Classrooms |  Food Services |  Outdoor Learning Labs |
|  Athletics |  Extended Learning |  Media Center |  Support/MEP/Storage |
|  Circulation |  Fine Arts |  Special Education | |

Quinton Elementary School



Community Environment

Quinton Elementary School is located on the east end of historic New Kent County and is a source of pride for community members. One of the most striking features of Quinton Elementary School is a large mural in the media center, painted by a local artist. This mural not only celebrates the rich heritage of the New Kent community but also serves as an educational tool, depicting regional historical landmarks and significant events from Virginia's history. The mural establishes a sense of community that greets students, staff, family and visitors and wraps into the media center.



Quinton Elementary School



Community Environment

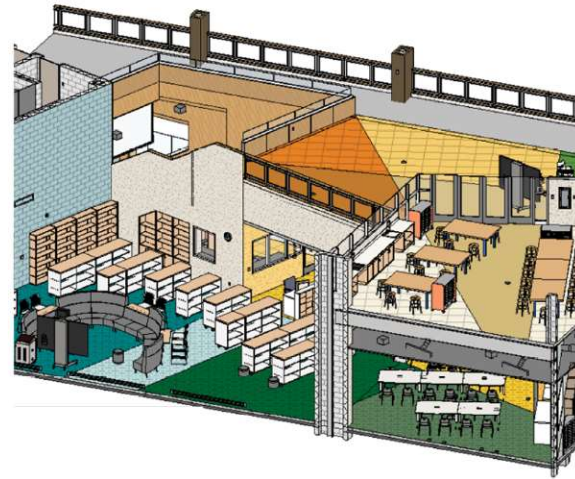
In this new school, NKCPs wanted to foster a welcoming space for everyone while meeting the needs of the community. Deviating from traditional elementary school designs, the facility has a gymnasium as large as those in most middle schools. The gymnasium is connected to the cafeteria through a platform stage that has the ability to open from both sides to support groups of various sizes.

Although the gymnasium is not a typical elementary school size, NKCPs wanted the Parks and Recreation Department's summer programs to use the public areas of the building. The New Kent Parks and Recreation Department also has a dedicated office in the school. These key features fulfill the need for a stronger Parks and Recreation presence and larger recreational space to support the community at the east end of the county.

The branding of Quinton Elementary School was also a community-driven endeavor. From the selection of its mascot—a bear cub—to the creation of a distinctive logo, each element was carefully crafted to reflect the school's values and foster a sense of belonging.

The design features a two-zone concept with public and academic spaces. This approach facilitates secure, after-hours use of the cafeteria, gymnasium, and media center for the community. During these events, the academic wings can be closed to the public.

Quinton Elementary School



Physical Environment

Quinton Elementary School boasts a meticulously crafted physical environment that prioritizes both color and functionality. Careful consideration was given to color and material selection throughout the project. This process began by assigning each grade level its own distinct color to foster a sense of identity and community within the school. This color scheme extends from the grade wings to the communal spaces such as the media center and STEM lab, where a harmonious blend of the colors signifies the interconnectedness of the school's diverse student body.

The depth and effectiveness of color palette and materials selection are on full display in the media center, which is centrally located along the main street corridor. The media center offers three educational spaces: a classroom, a campfire area, and individual learning zone. Students gather in the classroom area for group discussions. Then the class moves to the campfire area where students listen to books while seated in a semi-circle focused on the presenter, resembling a campfire setting. The individual learning area offers students comfortable seating that wraps around for a cozy setting and an elevated platform with a book nook for variation in seating. Here students have the opportunity to read books they select to foster their love for reading.

Centrally located on the main corridor, the media center was an ideal place to incorporate additional community spaces. The glass garage doors put learning on display and open to create a flexible event space with the support of a media wall, which includes interactive technology boards surrounded by a glass dry erase surface for messaging.

The media center is blanketed with the colors from each academic wing to create a visual connection and a feeling of comfort for all students.



Quinton Elementary School



Physical Environment

From the early stages of development, design efficiency was a key focus, evident in features such as the dual-sided stage that opens seamlessly to both the cafeteria and gymnasium to create a large community space. Acoustical panels and partitions enable versatility, allowing for concurrent performances and presentations without disruption.

Anticipating the county's rapid growth, an addition was developed for a master plan to accommodate the community's evolving needs. Innovative learning spaces, such as the learning stair, campfire area in the media center, and extended learning spaces, provide students with diverse opportunities for collaboration, exploration, and creativity.

The STEAM lab serves as a hub for hands-on learning experiences, empowering students to engage with science, technology, engineering, arts, and mathematics in a dynamic and immersive environment. The STEAM lab is complemented by an adjacent, large extended learning area. The social stair serves as a gathering space, presentation platform, and transportation hub connecting the media center and STEAM lab.

Quinton Elementary School



Learning Environment

Within the academic wings, students have access to extended learning spaces, affectionately known as the Bear Dens, where they can delve deeper into their studies and collaborate with peers. These areas cater to diverse learning styles and activities, providing a supportive environment for both individual study and group projects with passive supervision from teachers and staff. Additionally, the glass boxes located at the end of each extended learning area offer flexible space, allowing for seamless transitions between the traditional classroom setting and small group work.

Quinton Elementary School's commitment to inclusivity is evident in its provision of preschool classrooms and flexible accommodations for exceptional education. These spaces are thoughtfully designed to meet the unique needs of all students by providing larger classrooms with bathrooms shared between adjacent classrooms. By embracing innovation and flexibility, Quinton Elementary School creates a learning environment where students are empowered to explore, discover, and grow, both inside and outside the classroom.

Quinton Elementary School provides students with a dynamic learning environment that integrates indoor and outdoor spaces, fostering exploration, creativity, and collaboration. The second floor features an outdoor learning lab, where students can immerse themselves in hands-on experiences amidst the natural beauty of their surroundings. In this space, raised beds for gardening and science exploration offer opportunities for students to engage with the environment while cultivating their curiosity.



Quinton Elementary School



Size of Site	10.5 acres
Student Capacity	750
Area of Building	95,000
Total Project Cost	\$29,632,226
Cost Per Square Feet	\$312
Cost Per Student	\$39,510
Space Per Student	127 SF/Student

Quinton Elementary School

