



The VA Chapter of A4LE Annual Conference | Williamsburg, VA

2018 Architectural Awards

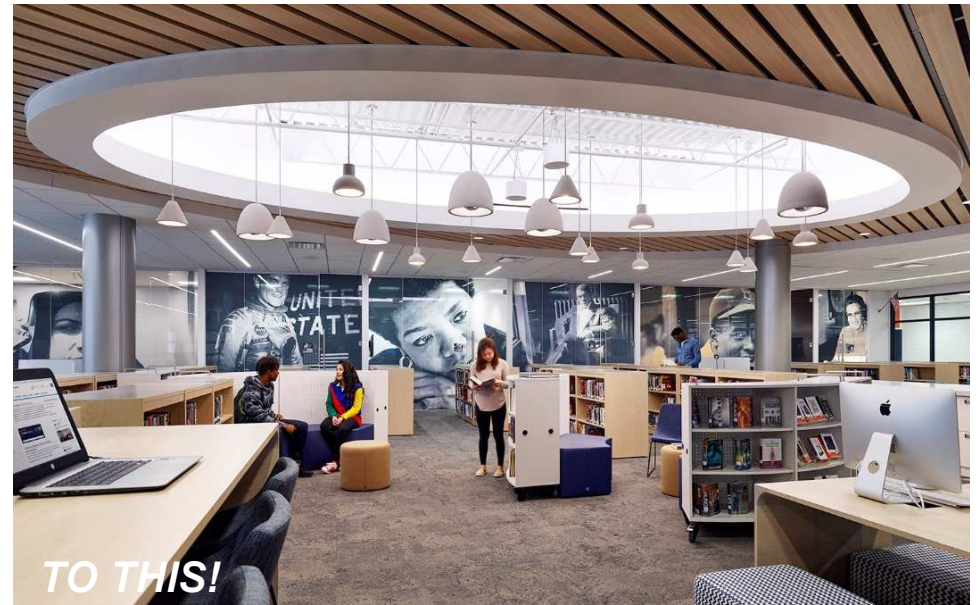


The VA Chapter of A4LE Annual Conference | Williamsburg, VA

North Stafford High School Library Renovation

Stafford County Schools
Stantec Architecture
Daniel and Company

CREATING OPPORTUNITY: THE 21ST CENTURY HIGH SCHOOL LIBRARY



Jury Comments



The VA Chapter of A4LE Annual Conference | Williamsburg, VA

- Variety of spaces – collaborative and individual learning spaces
- This library, unlike most, holds its own with the internet
- Visually stunning
- Inclusive opportunity for learners



The VA Chapter of A4LE Annual Conference | Williamsburg, VA

Bluestone Elementary School

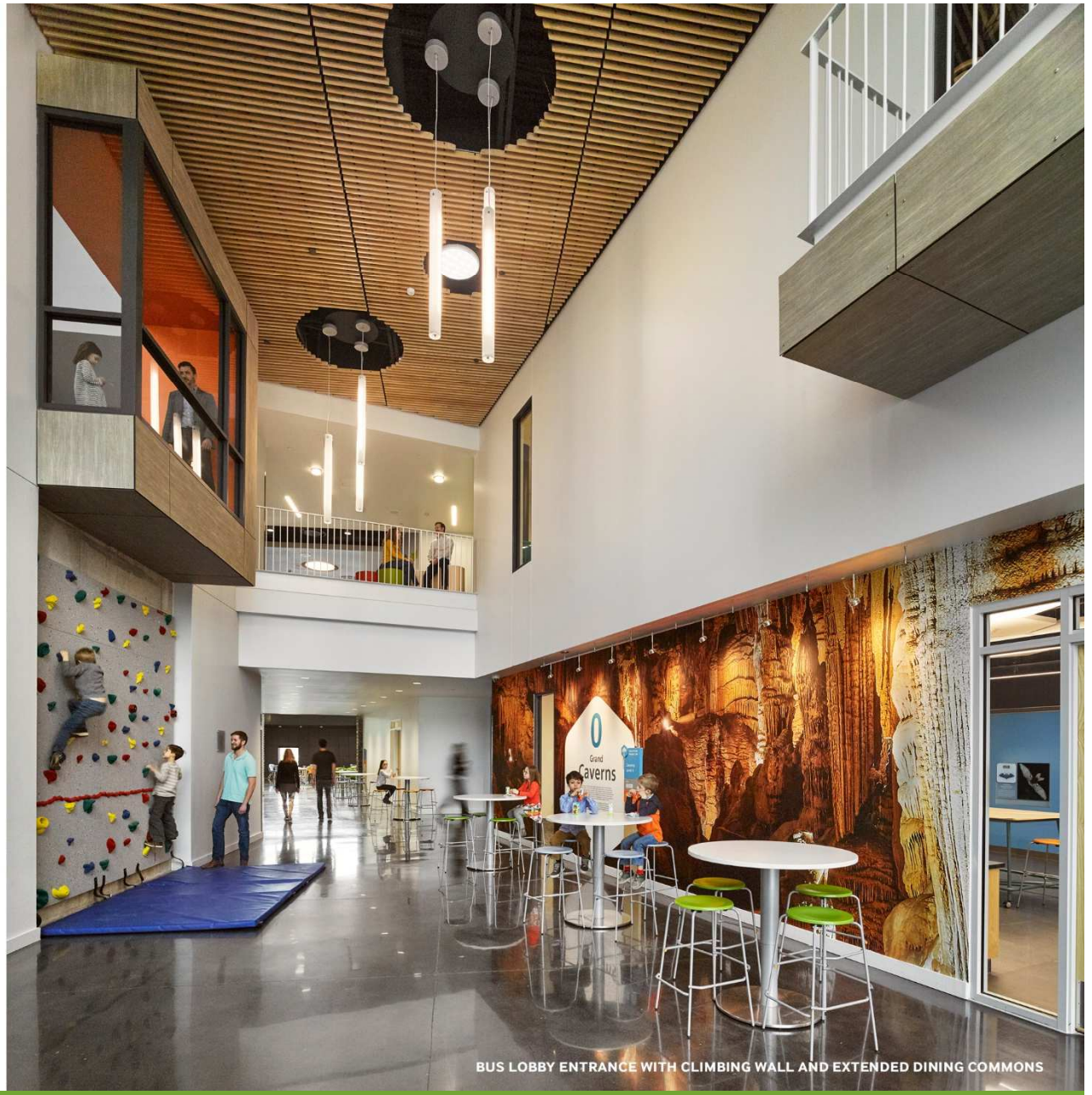
Harrisonburg City Schools

VMDO

Nielsen

Health and Learning Made Visible

Beyond the core learning spaces, opportunities for small group learning, collaboration, social connections, and physical activity are embedded throughout the school. In Grades 3-5, Exploration Rooms and makerspaces support STEM programs and hands-on learning. Strategic visual connections throughout the building, as well as to the landscape beyond, help to orient newcomers, promote school community, and celebrate the unique beauty of the Shenandoah Valley.



Creating a Welcoming Environment

The design embraces cultural diversity while highlighting the relationship between the school and its global context. These social and physical elements help students relate to the larger world while feeling part of a community designed just for them. Public spaces radiate outward from the lobby and create a welcoming arrival sequence, while wayfinding themed around local geography supports orientation. A representative international flag exhibit highlights the diversity of the student population. One level below, the Dining Commons features local wood and stone details to create a unique sense of place. Windows in entry-level shared spaces like the Music Room overlook the Commons and heighten feelings of connection within the school environment.



INTERNATIONAL FLAG WALL



ENTRY LOBBY



MUSIC ROOM OVERLOOKING DINING COMMONS



DINING COMMONS

Jury Comments



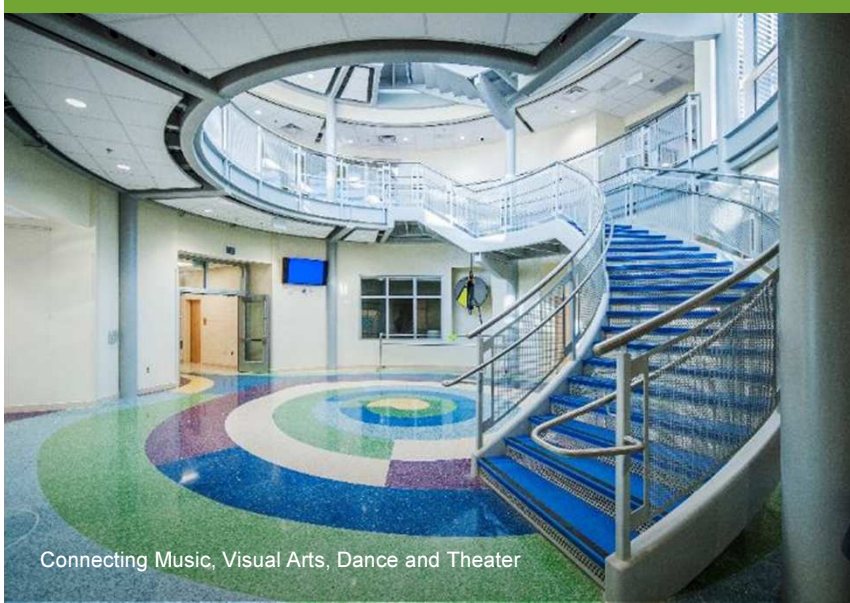
The VA Chapter of A4LE Annual Conference | Williamsburg, VA

- Open, flexible and adaptable to a variety of learning configurations
- Tailored to the community
- LEED certification is a bonus



Old Donation School Edward E. Brickell Academy for Advanced Academics & Arts

Virginia Beach City Schools
RRMM Architects
McKenzie Construction



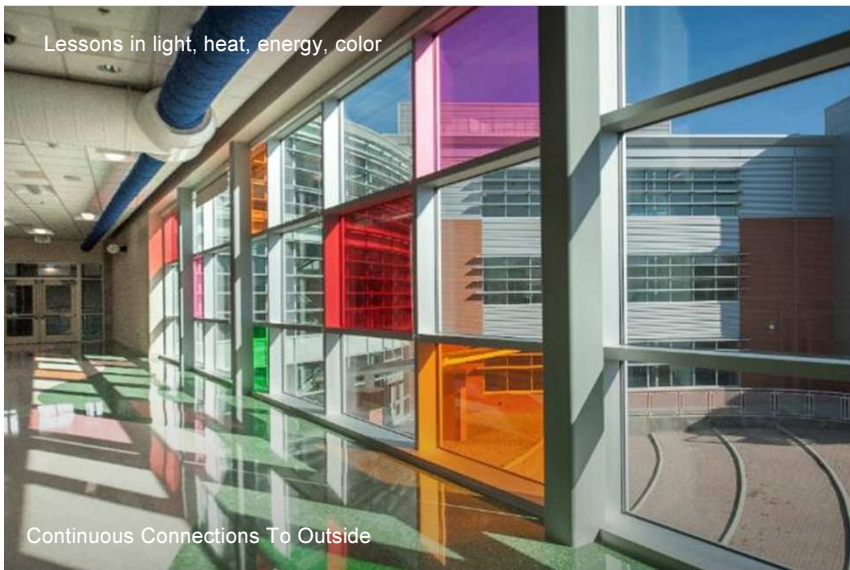
Connecting Music, Visual Arts, Dance and Theater

arts core



Produce from the student garden will be prepared and served here

outside dining & student garden



Lessons in light, heat, energy, color

Continuous Connections To Outside

2nd story corridor



Toilets are flushed with rainwater at ODS

Lessons in Physics, Math, Environmental Studies, Civics

curriculum courtyard

EDUCATIONAL COMMUNITY

Jury Comments



The VA Chapter of A4LE Annual Conference | Williamsburg, VA

- Flexible partitions – adaptable
- Attention to multiple intelligences
- Extensive natural light
- Outside garden provides opportunity for student ownership



The VA Chapter of A4LE Annual Conference | Williamsburg, VA

Elon Rhodes Early Learning Center

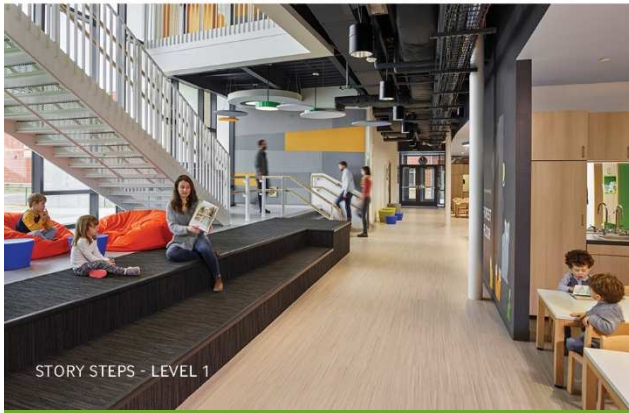
Harrisonburg City Schools

VMDO Architects

Nielsen Construction

Learning in a Neighborhood Setting

Community entourage areas along with hubs for literacy and movement engage circulation outside the paired studios to foster community and diverse active spaces. Interior environments are designed to foster optimal growth and development opportunities for exploration and learning while offering healthy connections to the outdoors. Play areas and a roof terrace support creative play, active movement and focused inquiry, sand and water play, and opportunities to explore nature.



Jury Comments



The VA Chapter of A4LE Annual Conference | Williamsburg, VA

- Modular and flexibility seating
- Smart storage
- Abundant light - very powerful
- Anticipates growth
- Use of hallway as learning spaces