

Beauty In The Balance:

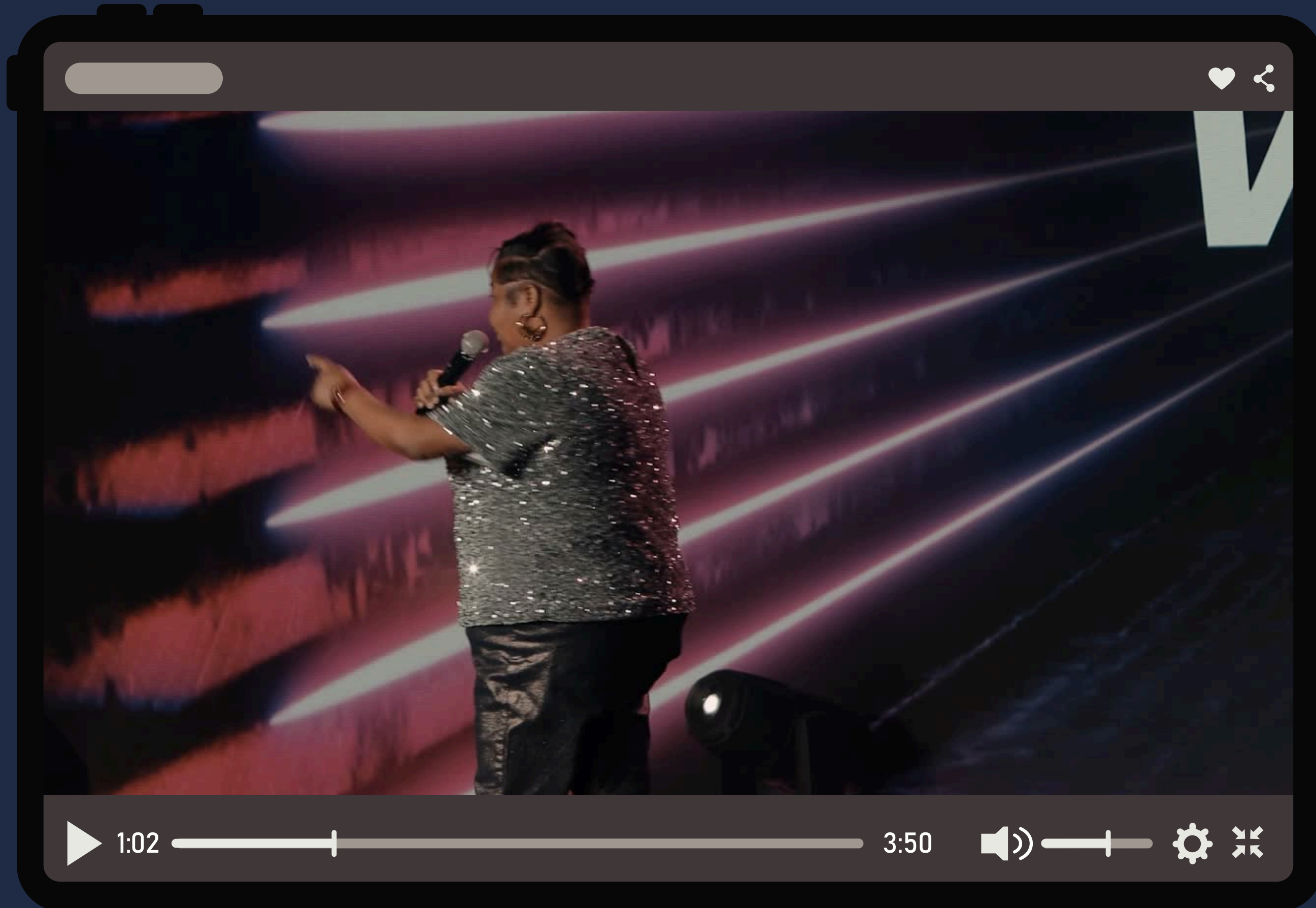
**Reimagining School Design When
Resources Are Limited**

Presenter: Simene' Walden

Intended Outcomes

- A Stronger Understanding of How Learning Environments Shape Student and Staff Experiences
- A Practical Framework for Thinking About Design Under Constraints
- Specific Ideas For Improving Classrooms, Hallways, Shared Spaces, or School Culture Without Large Capital Investments
- A Clearer Sense Of How To Prioritize Limited Resources For Maximum Impact
- Renewed Confidence That Thoughtful, Strategic Change Is Possible Now

Who Is Your Presenter Today?

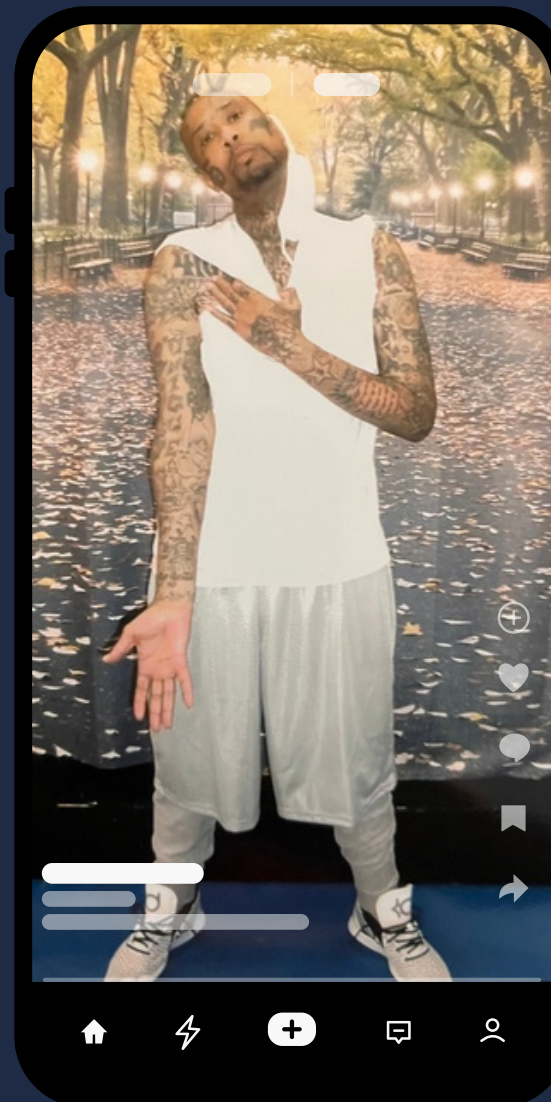


Why This Work Matters?

We were educated in schools where the resources were limited, but we both received a totally different education.



We Went To A School With Limited Resources




Demeco "Pooh" Richardson

Resources matter but the people who have access to and control the resources matter just as much.

- Simene', The Student Teacher

The Sharing Table





**Limited Resources Do
Not Have To Limit The
Connections or
Relationships Built
Which Helps Push
Curriculum Forward.**

Did You Know?

Black students are 2.2 times as likely to receive a referral to law enforcement or be subject to a school-related arrest as white students.

1.7 million students are in schools with police but no counselors.

3 million students are in schools with police but no nurses.

Schools recorded an increase of 21% more incidents of exclusionary discipline after the introduction of SROs.

6 million students are in schools with police but no school psychologists.

Juvenile incarceration reduces the probability of high school completion and increases the probability of incarceration later in life.

**3 million students are in schools with
police but no nurses.**

According to the
National
Assessment of
Adult Literacy, 2/3
of students who
cannot read
proficiently by the
end of the fourth
grade will end up
in jail or on
welfare.

85% of all juveniles
who interface with
the juvenile court
system are
functionally low
literate.

**6 million students are
in schools with police
but no school
psychologists.**

Students who dropout of high
school are 5 times more likely
than high school graduates to be
arrested in their lifetime.



The teacher/educator who believes a child deserves a good education is the one who gets it, regardless of the limited resources.

-Simene' Walden, The Student Teacher



**“Limited” as an
opportunity for
intentionality, creativity,
and strategic action.**

The Impact of Learning
Environments
On Student and Staff Outcomes

The Impact of Learning Environments On Student and Staff Outcomes

How school spaces affect belonging, behavior, regulation, focus, and engagement?

What is the connection between environment, morale, and instructional effectiveness?

Why design choices are tied to health, safety, and welfare—not just appearance?

Practical Strategies
For Reimagining
School Design With
Limited Resources

Reimagining School Design When Resources Are Limited

Prioritizing
High-Impact,
Low-Cost
Improvements

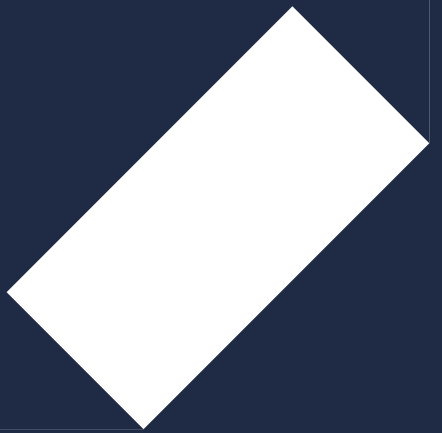
Refreshing
Underused
Or
Overlooked
Spaces

Creating
Welcoming Spaces
Through
Intentional
Arrangement,
Visibility, and
Accessibility

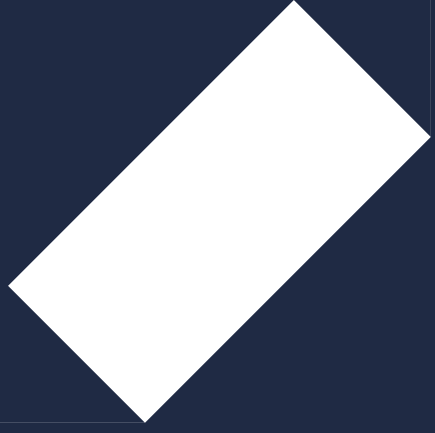
Leveraging Community Partnerships, Donations, and
Phased Implementation

“School design is not always about expensive renovation. Sometimes it is about one corner, one hallway, one room, or one routine being reimaged to better support the people who use it every day.”

“Students can feel the difference between a room that is managed and a room that is designed with care.”



What can you do tomorrow to reimagine your classroom, office space, hallway, cafeteria, or entry way?



Q & A



I'd Love Your Feedback



1. Scan this QR code



<https://bit.ly/reimagine26>

2. Enter This Code On The Screen

REIMAGINE

Let's Stay In Touch!



@simenespeaks



@simenewalden



@simenewalden



@simenewalden

