

2024 TENNESSEE CHAPTER *DESIGN AWARDS*

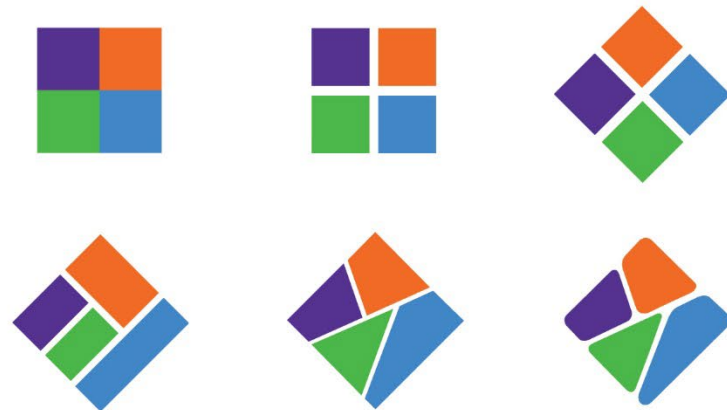
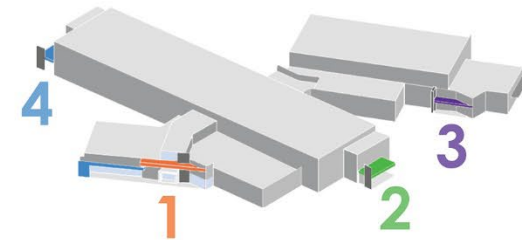
ARCHITECTURAL EXHIBITION & AWARDS

JUNE 6, 2024

Goodlettsville Elementary School

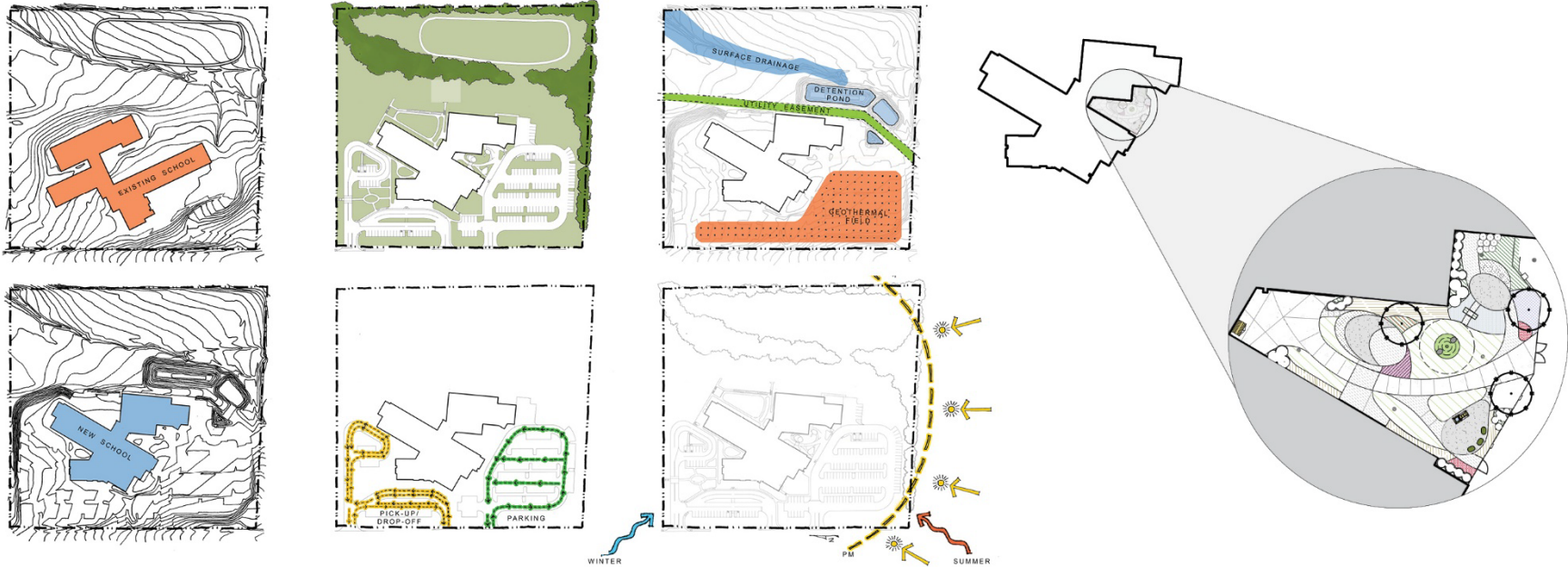
HOUSES

The original Goodlettsville Elementary School located on the same site as the new facility had the rich tradition of academic houses, each represented by a different color. During the early design process, GMC reimagined the concept of the four houses as part of a whole. The development of a unifying logo and color scheme became a guiding principal throughout the school's design.



SITE DESIGN DIAGRAMS

The inclusion of a secure, outdoor sensory garden expands the availability of teaching and activity spaces that reinforce the GES mission of a Center for Experiential Learning. The garden has been located to maximize early morning sun for the raised growing beds and provides earth berms creating special zones within the courtyard.

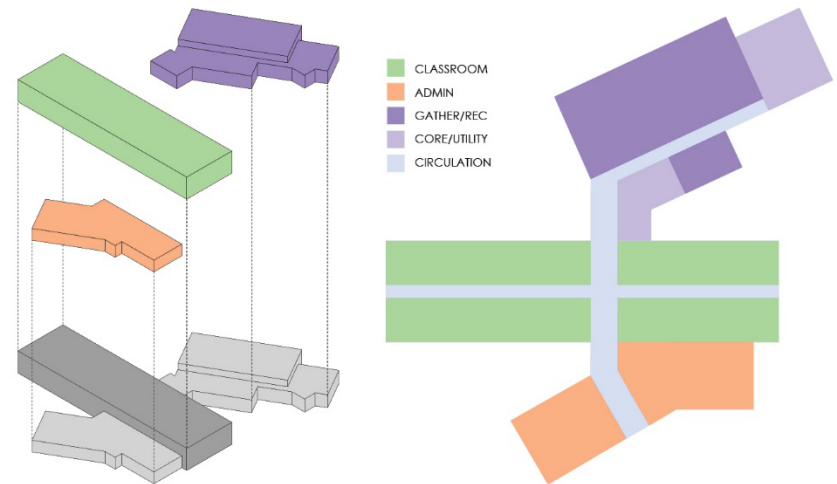




PROGRAM & MASSING

The programming template, developed by Metropolitan Nashville Public Schools, was the foundational guideline for planning the new facility. This directed the quantity of classrooms, offices, service spaces, and square footage standards for spaces such as the dining room, playroom, and library. Overlaid upon the MNPS template were the specific needs of Goodlettsville Elementary, which considered their student population, particular needs programs, and services provided by the school. The organization of spaces in the new facility, derived from the educational program, were arranged in three main categories, expressed in the layout of the building:

- main entry focal point, media center & administrative suite
- two-story classroom wings organized into grade levels
- playroom, cafeteria, music rooms, & utility service areas

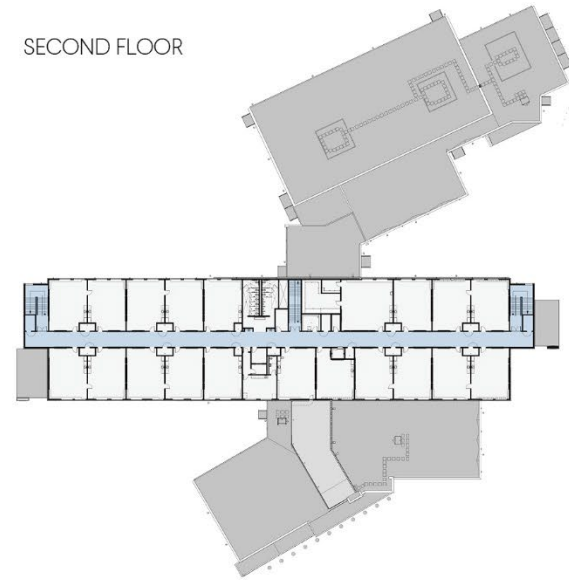


PLANS

FIRST FLOOR

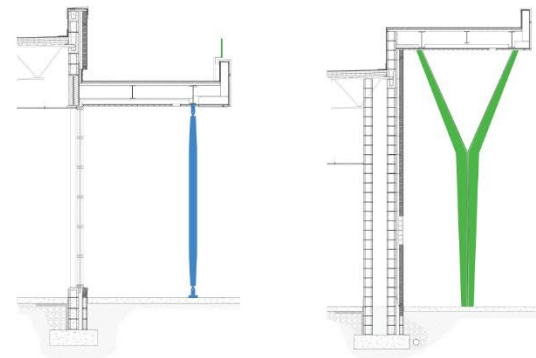
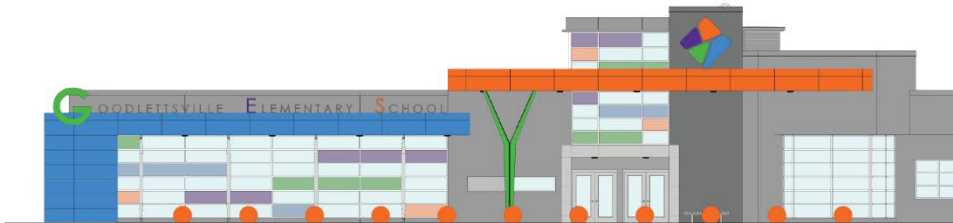


SECOND FLOOR

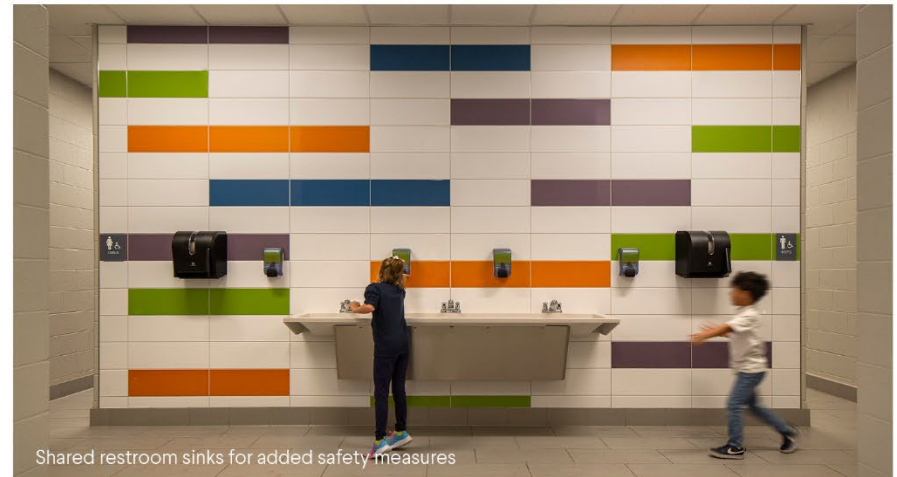


- Clear circulation path and intersection minimizes secondary circulation
- Bordering event spaces share flexible stage
- Dedicated events entrance and parking, with separate bus and car pick-up zones
- Identifiable media center facade at front entrance
- Two-story classroom wing allows for expansion to the West
- Administration and utility areas provided with easy access to main hallways

DETAILS

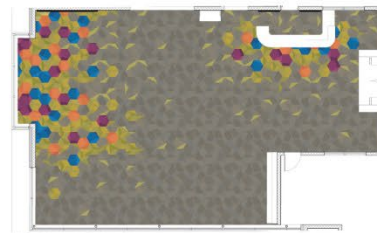




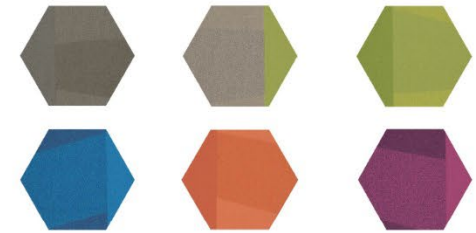


DESCRIPTIVE DATA

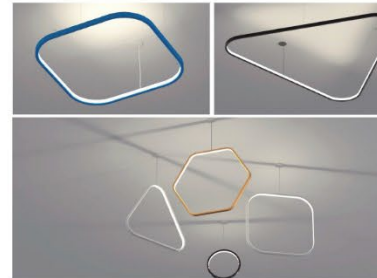
- Size of Site – 11.7 acres
- Student Capacity – 800 students
- Area of Building – 82,750 sf
- Total Project Cost – \$23,049,000
- Cost per square feet – \$278.54
- Cost per student – \$28,811.25
- Space per student – 103 sf



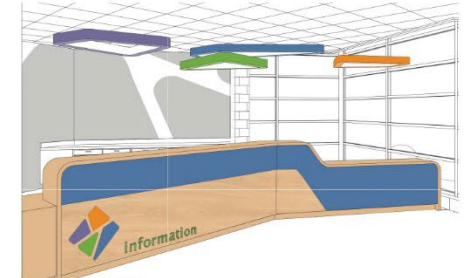
LIBRARY CARPET PATTERN



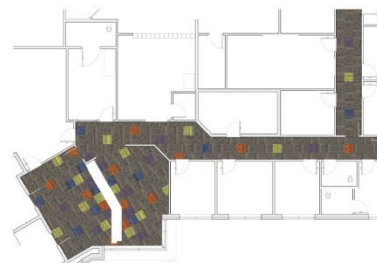
CARPET FINISH



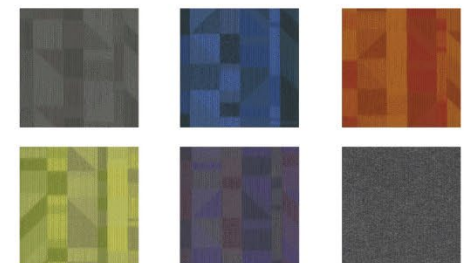
DECORATIVE LIGHT FIXTURES



RECEPTION DESK RENDER



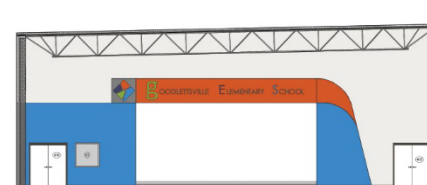
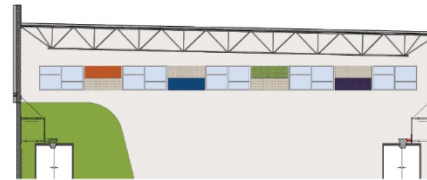
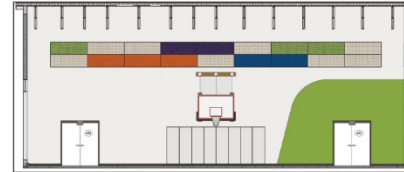
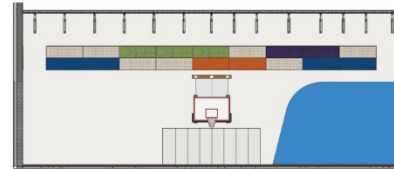
ADMIN CARPET PATTERN



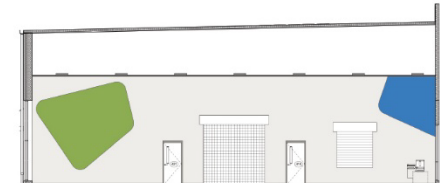
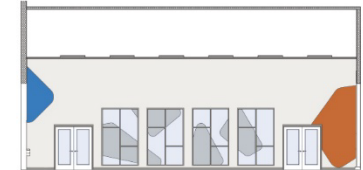
CARPET FINISH

IDENTIFICATION

- Name/Location – Goodlettsville, Tennessee
- Owner – Metro Nashville Public Schools; Dr. Adrienne Battle
- Owner’s Representative – Tracy Gibson, M. Ed, Exec. Principal
- Design Firm – Goodwyn Mills Cawood
- Designer & Principal – Roy Garcia; CA – Chase Turpin
- Educational Planner – Roy Garcia
- Landscape Architect – Al Wilkinson Landscape Architect
- Engineers – Structural Design Group (Structural); Barge Civil Associates (Civil), I.C. Thomasson (MPE & FP)
- Contractor – RG Anderson Company
- Photographer – Creative Sources (Rion Rizzo)



PLAYROOM RENDERS



DINING RENDERS