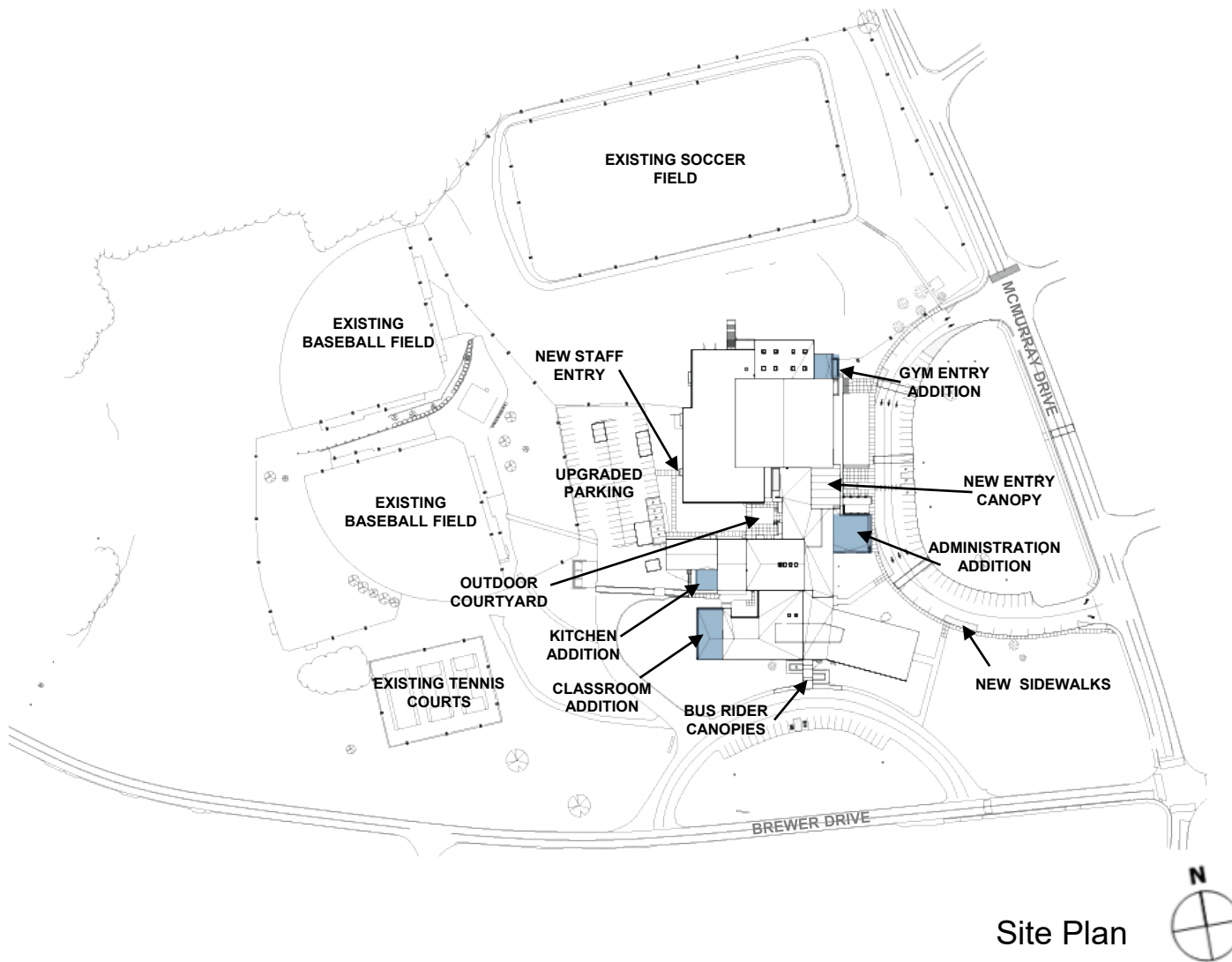


McMurray Middle School

Changes in education and security demands required a full renovation and series of additions to the 1963 original McMurray Middle School building.

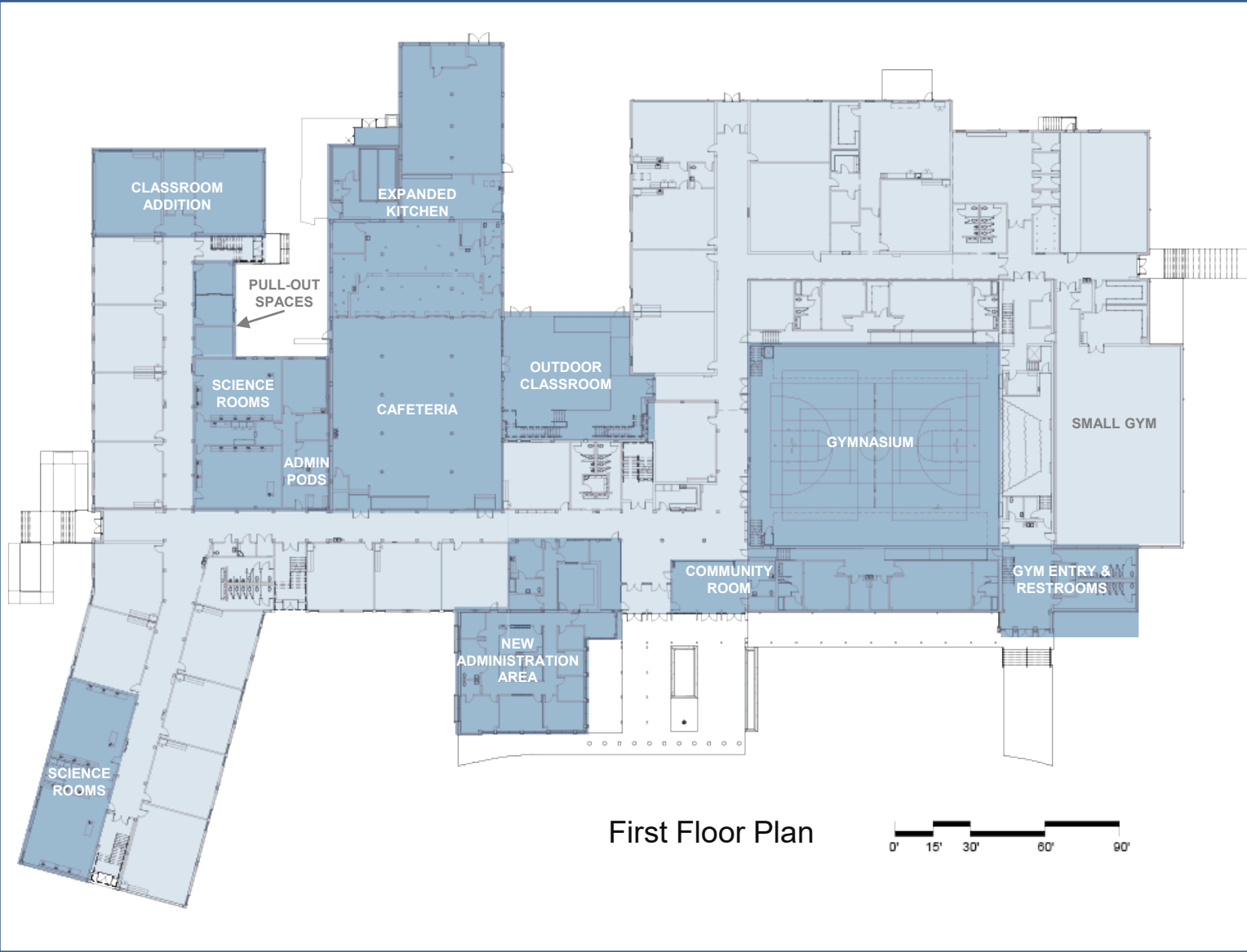
The highlighted portions of the plan to the left show locations of the additions made by HMKA. These include new classrooms, a kitchen extension, a separate entrance and restroom for the indoor gym and the other outdoor sports facilities, as well as new administration offices that created a secure way to welcome guests.

A new enclosed courtyard created an outdoor learning space for students, and new covered canopies and porches were also added to give protection from the elements for students waiting to board cars and buses.



Site Plan





First Floor Plan

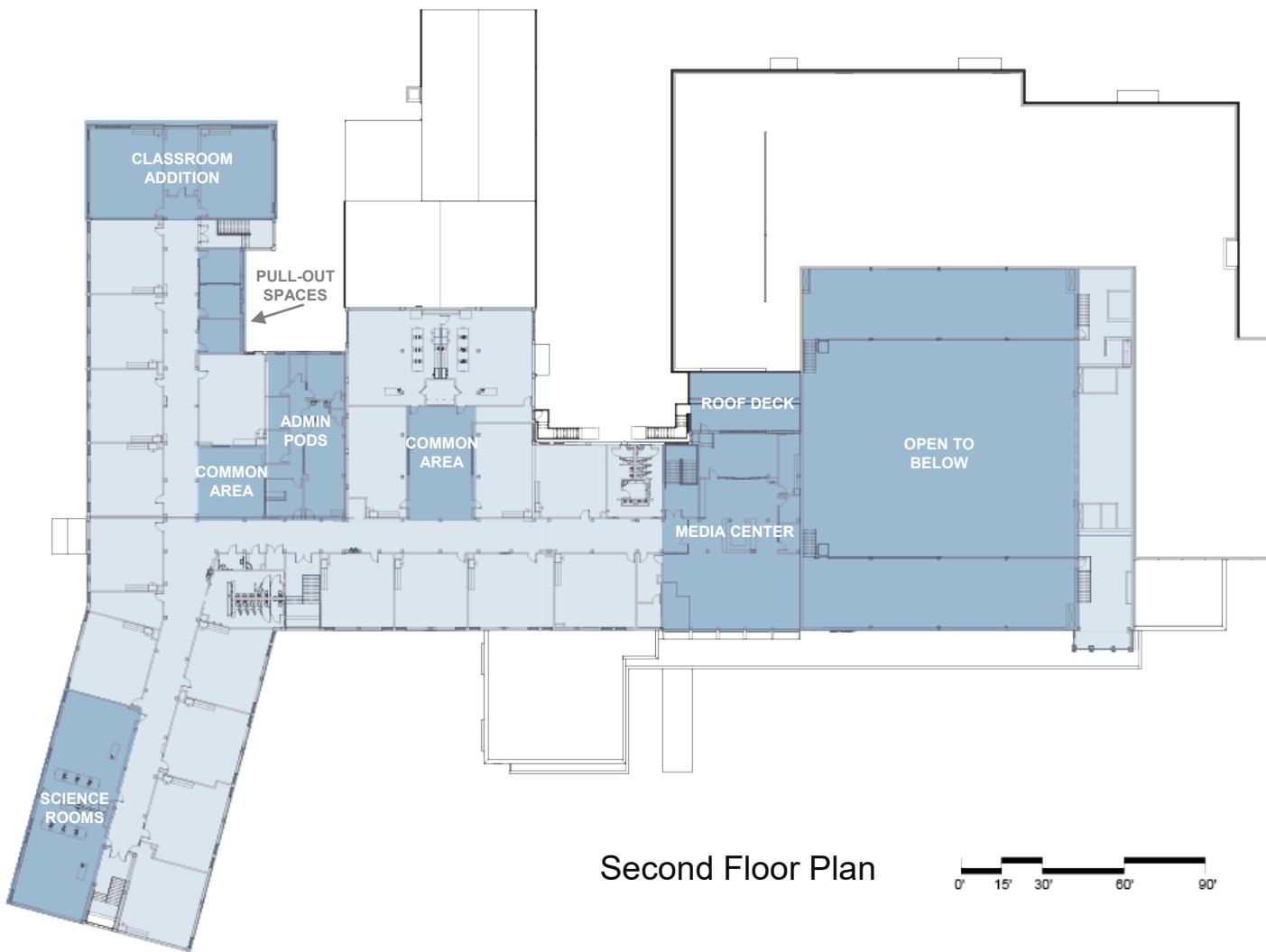


The entire first floor was fully renovated to provide modern learning spaces for the school's diverse population. New office pods were distributed throughout student spaces to allow for administrators and specialists to be located closer to the students they serve.

Three small additions were made in order to create additional administration space, expand the crowded kitchen, and allow for a new and separate entrance into the gym facilities.

HMKA also improved the seating and climate control in the existing gym. This provided more space for coaches' offices and allowed for an update to the locker room.

New and improved windows were installed throughout the first floor to introduce some much-needed natural light into the space. These contributed greatly to the LEED Gold accreditation of the renovation.



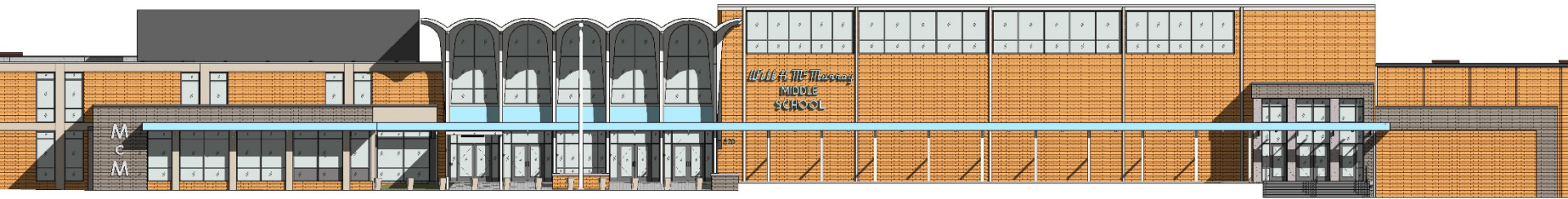
Second Floor Plan



On the second floor, a classroom addition was added to accommodate McMurray's growing student population.

HMKA was able to create several different spaces for large and small groups. Common areas for both 7th and 8th graders were introduced along the main corridors, as well as several "pull-out" spaces for smaller, more interactive educational opportunities.

The existing library was reconfigured for additional classrooms, and a new media center was provided which included a "maker space" for students.



East Exterior Elevation



7th Grade Common Area



8th Grade Common Area



"Pull-Out" Space



Entry and Community Room

An imperative for any school is connecting to its community, particularly in a locale as diverse as South Nashville.

Students at McMurray Middle School speak 22 distinct native languages and the school has several classes to specifically engage refugee students. Because of the diversity of students, flexible space for small group intervention was a top priority for staff and teachers. Itinerant teachers fluent in the native language of students, such as Arabic or Spanish, often pull small groups of students out of class for special sessions.

HMKA created six "pull-out" spaces, two common areas, and a community room in order to provide both collaborative and private flex spaces for students in all grades.

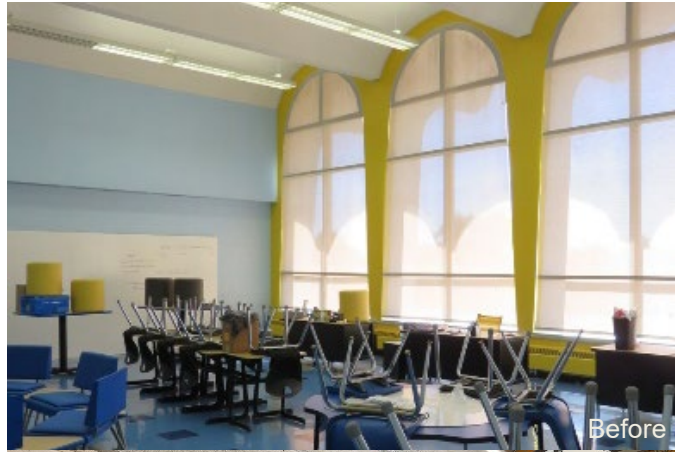


Before



After

Front Façade



Before



After

Media Center

HMKA designed a textured composition to stretch across the front façade of the school to create depth and give it a more human scale.

Prior to renovation, the massive arched windows opened to a classroom used for in-school suspension. They were covered in a shade fabric to reduce the glare and the heat gain from the rising sun.

HMKA saw an opportunity to take advantage of the sunlight and bold aesthetic of the arched windows. Now, a media center stretches across this end of the second floor, from the soaring windows in the front to a new set of windows in the rear. These new windows look onto a sun-bathed roof deck that allows students to learn and read outdoors.



Before



After

Cafeteria



Before



After

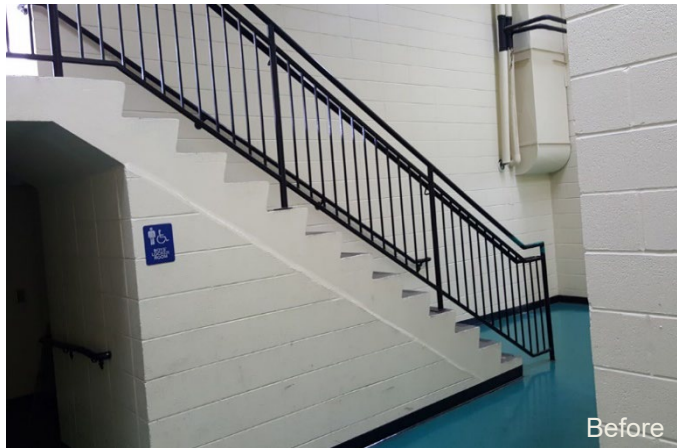
Science Lab

The existing cafeteria was dark and felt removed from the rest of the school. The kitchen was extremely undersized, and there was not a way to effectively move students through serving lines.

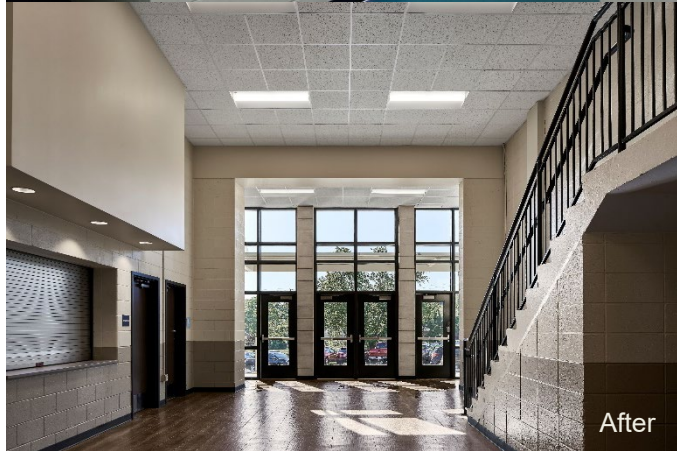
HMKA responded to this by adding four new serving lines to connect the kitchen and the bright, colorful cafeteria. The north face opens onto a secure courtyard for al fresco dining when the weather allows. The courtyard doubles as an outdoor classroom to learn about horticulture and biology.

New equipment throughout the rest of the kitchen allows for preparation of quality meals for the 800 students.

HMKA was also able to improve the functionality of the science labs to give students a more interactive educational experience.

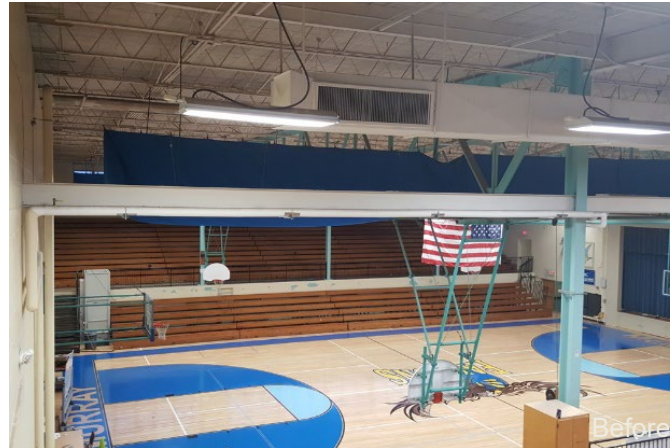


Before

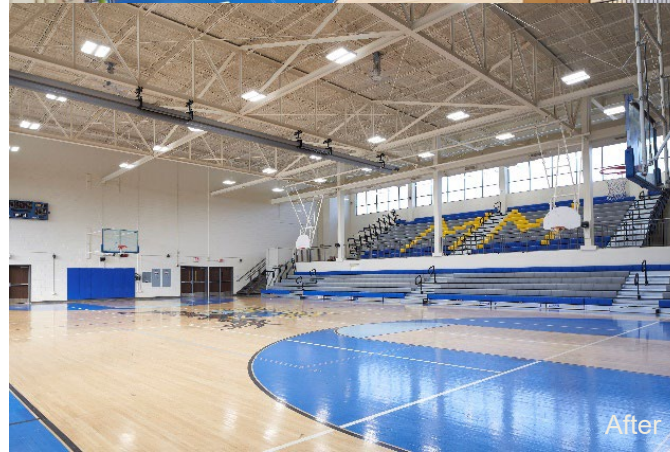


After

Gym Entry



Before



After

Gym

A key component of the project was the creation of a separate gym entry because the building was difficult to secure during sporting events.

In addition to a separate entry, HMKA included new restrooms for use in public functions.

Now, the school can separate the gymnasium area from the rest of the school or allow access to just the new concession stand and restrooms during outdoor soccer games. The arrangement of exits allows the remainder of the school to remain secure from wandering guests.

Large new fans, thermally efficient windows, and LED lighting help to reduce energy use in the large gymnasium volume.

The windows are acid etched, which not only helps to reduce solar gain, but also diffuses light throughout the space and minimizes glare for those playing sports.

SIZE OF SITE: 28.72 ac.

STUDENT CAPACITY: 800

AREA OF BUILDING: 125,800 sf Total
9,100 sf Additions
116,700 sf Renovations

TOTAL PROJECT COST: \$18.2 million

COST PER SQUARE FEET: \$145

COST PER STUDENT: \$22,750

SPACE PER STUDENT: 157 sf

PROJECT NAME: McMurray Middle School

PROJECT LOCATION: Nashville, TN

SCHOOL DIVISION: Metro Nashville Public Schools

SUPERINTENDENT: Dr. Shawn Joseph

OWNER'S REPRESENTATIVE: Derek Howard

DESIGN FIRM: HMK Architects PLLC

PRINCIPLE IN CHARGE: Neal Hinson

PROJECT DESIGNER: Logan Newton

CONSTRUCTION ADMINISTRATOR: Logan Newton

INTERIOR DESIGNER: Inner Design Studio

LANDSCAPE ARCHITECT: Littlejohn, an S&ME company

ENGINEERS: CIVIL: Littlejohn, an S&ME company

STRUCTURAL: EMC Structural Engineers

MECHANICAL & PLUMBING: Envision Advantage

ELECTRICAL: Envision Advantage

BUILDER: Orion Building Corporation

PHOTOGRAPHER: Nick McGinn