



The Lakeland Middle Preparatory Project stands out because the building so closely reflects the aesthetic and programmatic desires of the community it serves. Lakeland residents participated in online surveys and live feedback sessions to offer input into their priorities for middle and high school programs. The building was designed (by two Lakeland architectural firms) with an attention to community access with "public" spaces like the spacious library and beautiful gymnasium easily accessible from the main entrance, while classroom and other educational spaces can be locked off during public events and performances.

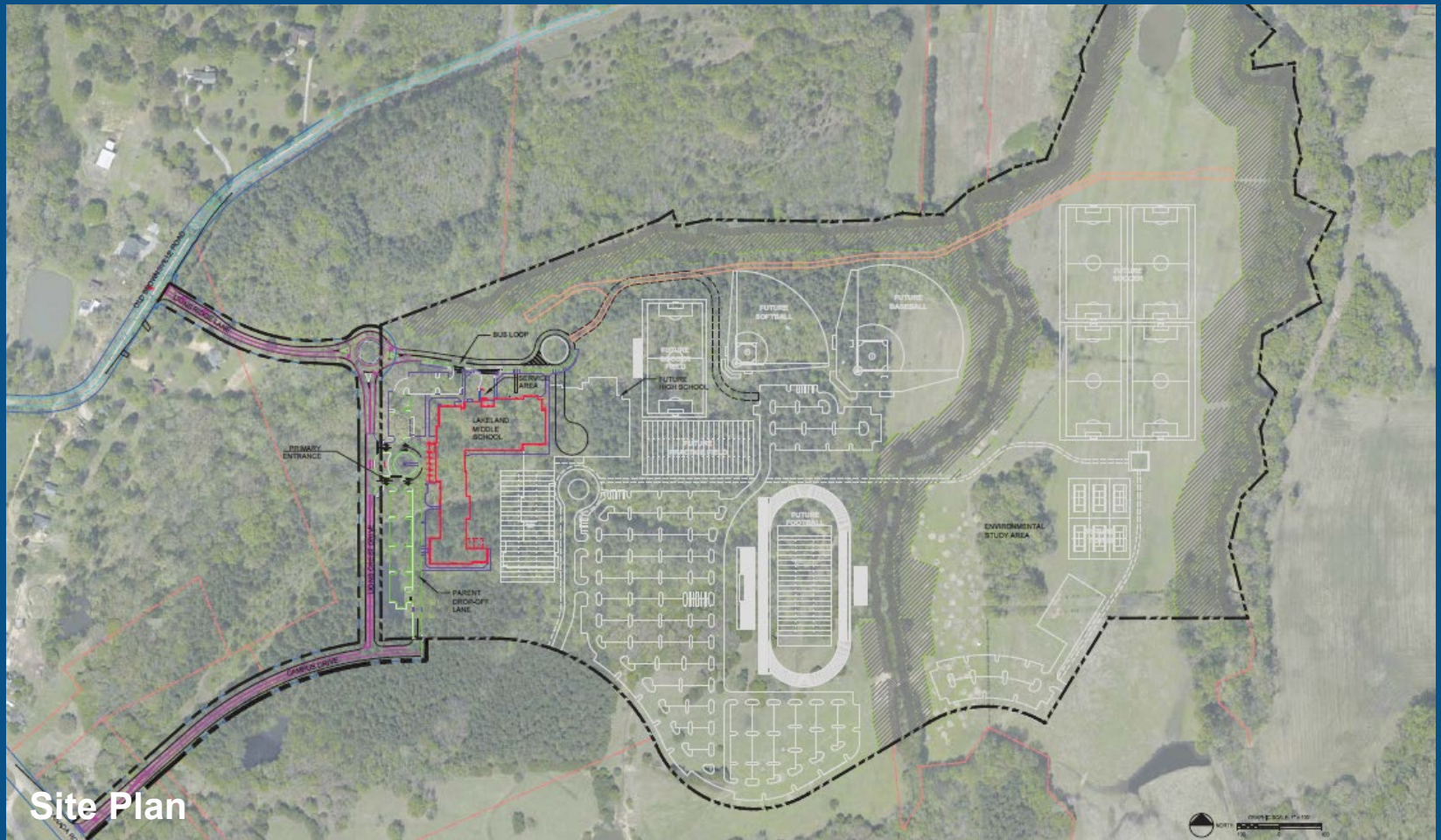
The school construction features numerous nods to the Lakeland Lions branding mark, which has quickly become ubiquitous in the community. It's no secret that schools bring communities together, but rarely does a community have an opportunity to influence how their school looks, feels, and functions. Having already hosted numerous academic, athletic, and fine arts events that were open to the public, the goals of the building design have come to fruition in just a few short months.

# 2022 TENNESSEE CHAPTER *DESIGN AWARDS*

## ARCHITECTURAL EXHIBITION & AWARDS

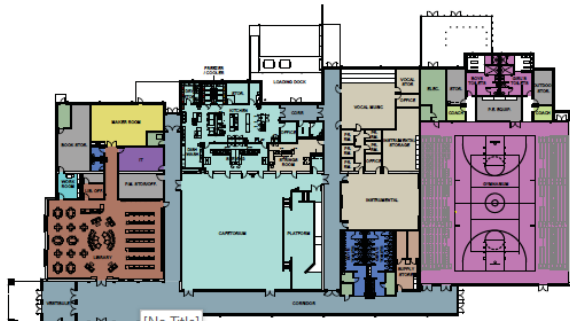
### FEBRUARY 23, 2023

## LAKELAND PREPARATORY MIDDLE SCHOOL NEW CONSTRUCTION



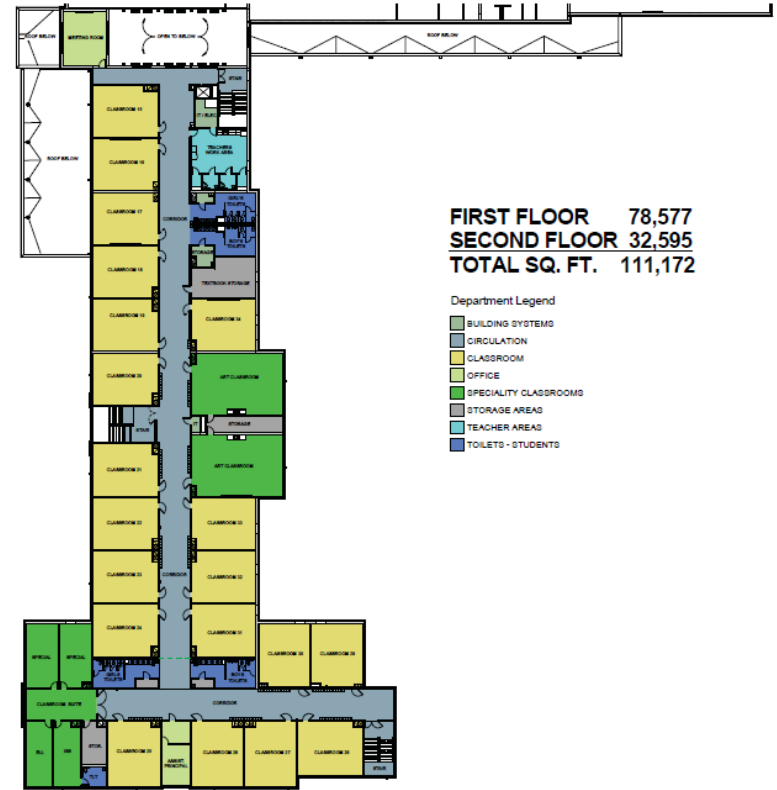
## Site Plan

The dream for the new Lakeland Middle Preparatory School soon began after Lakeland became its own school district. In 2014, the dream started becoming more of a reality, when ideas began taking shape, people gave their input and programming began. Design documents were created, and once everything was finalized, the Lakeland School System broke ground in the Spring of 2016. Construction went smoothly, and the doors to the school were opened in August 2017 for the 2017-2018 school year. This 900-student, 113,523 square foot middle school includes a wood floor gymnasium, maker's space, library, and cafeteria.



**FIRST FLOOR 78,577**  
**SECOND FLOOR 32,595**  
**TOTAL SQ. FT. 111,172**

- Department Legend
- BUILDING SYSTEMS
  - CAFETERIUM AREA
  - CIRCULATION
  - CLASSROOM
  - FINE ARTS
  - LIBRARY
  - MISC.
  - OFFICE
  - PHYSICAL EDUCATION
  - SPECIALITY CLASSROOMS
  - STORAGE AREAS
  - TEACHER AREAS
  - TECH REPAIR
  - TOILETS - STUDENTS

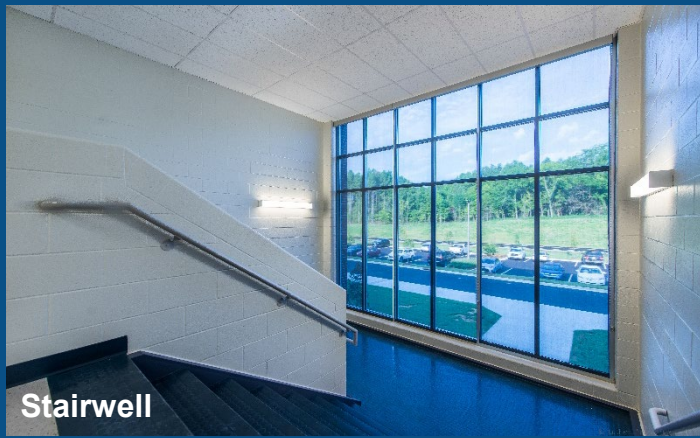


**FIRST FLOOR 78,577**  
**SECOND FLOOR 32,595**  
**TOTAL SQ. FT. 111,172**

- Department Legend
- BUILDING SYSTEMS
  - CIRCULATION
  - CLASSROOM
  - OFFICE
  - SPECIALITY CLASSROOMS
  - STORAGE AREAS
  - TEACHER AREAS
  - TOILETS - STUDENTS

First Floor

Second Floor



Stairwell



Classroom



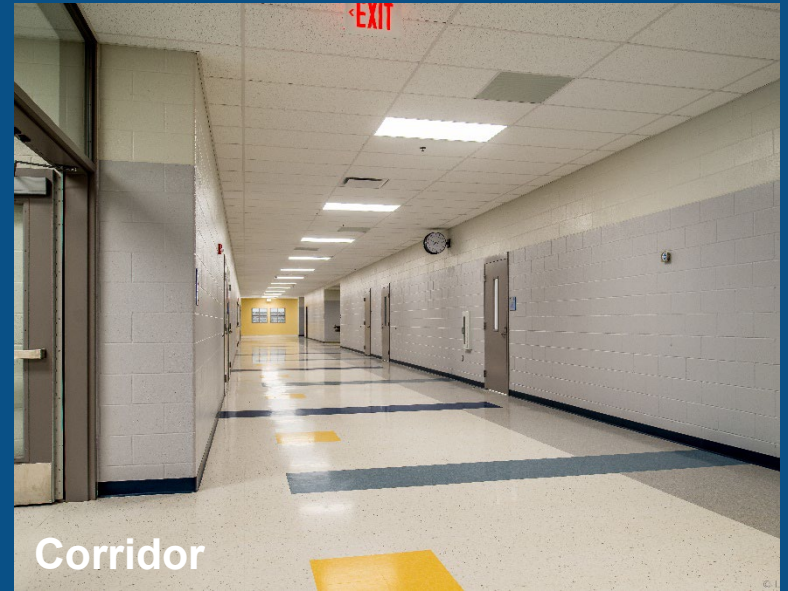
Entry Corridor



**DESIGN:** The architecture of Lakeland Middle Preparatory School was to reflect an old world, historic appearance. The school was to feel heavy and stoic like a prestigious college campus. The client wanted the school to feel timeless and inviting, a place of knowledge. The architects achieved this appearance through the use of brick, limestone, and an ashlar pattern stone as the materials. The stone at the front entrance and at the canopy gives an arcade rhythm one could find in San Marcos square in Venice. The shape of the front stone entry way reflects a Gothic Revival. The school crest in the upper gable was the idea of the School board.



Exterior



Corridor

**SAFETY:** The corridor system has two central locations where two assistant principals can be stationed and monitor the corridor on both floors. These locations are also visible to each teacher, so that each has direct views of each other. Additionally, each exterior door is equipped with access control systems using proximity cards. Visitors must arrive through the main entrance via a secured vestibule.

**Cost Efficiency:** Lakeland Middle Preparatory School was constructed using load bearing masonry concrete block with brick and stone veneer on the exterior, which eliminates the steel at the perimeter. The roof is composed of steel joist and metal roof deck system, and standing seam metal and bar joist. The roof system is also composed of R-30 insulation, with a white roof for ultraviolet reflection.



Cafetorium



Gymnasium



Library



Library

**Community Impact:** The gymnasium, library and cafetorium all have direct access from the exterior, which will allow for community use without disturbing the remaining facility. Additionally, the library is located directly adjacent to the front of the facility, which allows shared use with minimal disturbance.

**SITE CHALLENGES:** 94-acre site, fully wooded, with two streams flanking and dividing the property that created numerous environmental challenges regarding natural resources to be preserved by the seller and the municipality.

Bringing all utilities to the site from locations as far-reaching as over a mile away for power and water created numerous challenges for public right-of-ways, easements and local utility company. All of this had to be engineered, navigated and built prior to construction of the school.

In addition to the utilities and natural resources, three new public roads had to be built to form multiple access points for the school site.



# Descriptive Data



## SIZE OF SITE & AREA OF BUILDING

- 94 acres
- Overall square footage: 113,523 sq. ft.



## STUDENT CAPACITY

- 900 students



## COST PER STUDENT

- \$124 sq. ft. per student



## TOTAL COST OF CONSTRUCTION & COST

- Total cost of construction: \$12,231,251
- Cost per square foot: \$109.48

# Identification slide

## NAME & LOCATION

- Lakeland Preparatory Middle School
- 5020 Lions Crest Drive, Lakeland, TN 38002

## PHOTOGRAPHER

- Joseph Luther

## OWNER

- Lakeland School System
- Dr. Ted Horrell, Superintendent
- Dr. Ted Horrell, Owner's Representative

## DESIGN FIRMS

- Renaissance Group, Inc., Architect
- A2H, Architect
- Renaissance Group, Inc., Interior Design

## ENGINEERS

- A2H

## Builders

- Chris Woods Construction



Renaissance  
Group

