



Pre-Performance / Warm-Up Room



Connector Gallery



Exterior

# 2022 TENNESSEE CHAPTER *DESIGN AWARDS*

## ARCHITECTURAL EXHIBITION & AWARDS

### FEBRUARY 23, 2023

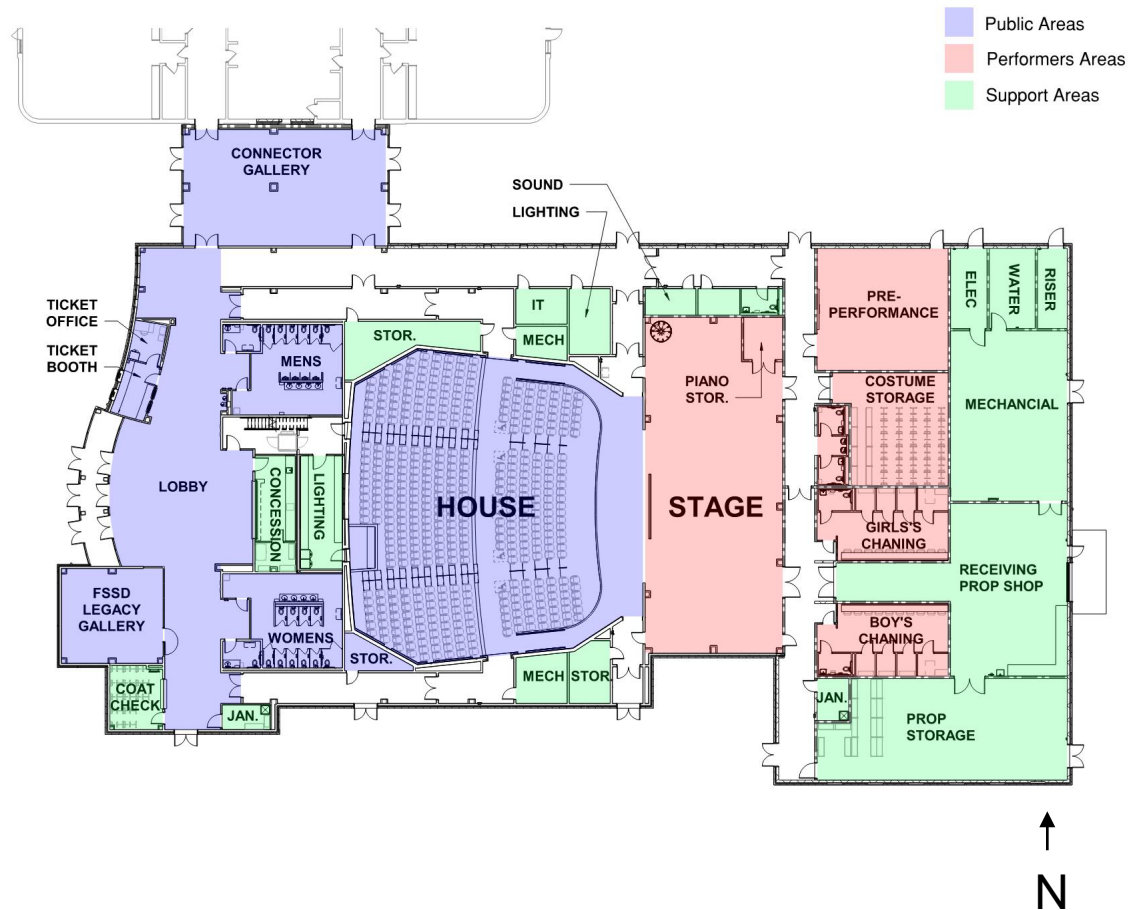
# Site Plan



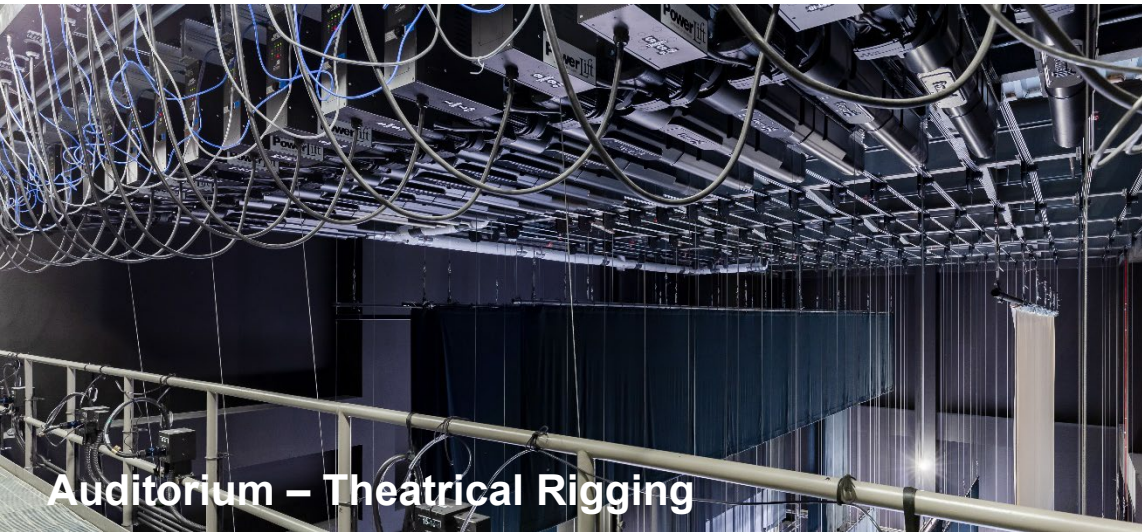
The Franklin Special School District Performing Arts Center is a 34,400 square foot facility that seats 485 people. Seating surrounds a thrust stage, which extends into the audience on three sides, with a 120 square foot proscenium. The stage is equipped with a full 49-foot fly loft accessible by catwalks. The PAC also features dressing rooms, pre-performance spaces, and prop rooms along with a building workshop, concessions stand, ticket booth, and the Legacy Gallery.

# Planning Process

Creating ownership through a collaborative process with the school board, principals, and teachers was important to create a facility that met everyone's needs. Wold met with the theatrical teachers to gain insight into how they were using their current space and what they wanted to see in their new facility. During meetings with the District, priority ratings were assigned to each requirement to ensure the most important items were addressed first.



# Learning Environment



**Auditorium – Theatrical Rigging**



**Auditorium**

The Performing Arts Center was designed to support a wide variety of activities, from kindergarten choir, to middle school band, to professional theatrical productions. This gives the entire District a modern facility it can use for any type of performance or class for all grade levels. The stage, theatrical rigging, and AV systems were all designed so they could be changed or expanded as the District grows.

# Physical Environment

The PAC was designed with the safety and security of the students as one of the main priorities. Several of these safety items include forced-entry resistant glazing, security cameras, and a door access system that is connected to the district main. A FEMA rated tornado shelter was included in the back of house spaces that holds up to 580 people. This shelter was 1 of 2 added to the schools' campus to provide a safe area for the entire school in the event of an emergency.



Exterior



Auditorium

# Community Environment



Main Lobby



Legacy Gallery

The Performing Arts Center was designed not only for the School District to use, but to be opened to the wider community. This fulfills a much-needed service for the community that was missing. To maintain a secure facility, the Performing Arts Center is separated from the rest of the school. A limited-access door control system ensures the community has access to permitted areas.



Changing Room



Legacy Gallery



Auditorium



# Descriptive Data

- Size of Site
  - 2 acres
- Student Capacity
  - Main Auditorium seats 485 people
- Building Area
  - 34,400 sqft
- Total Project Cost
  - \$17,000,000
- Cost per Square foot
  - \$494 per sqft
- Cost per Student
  - This Performing Arts Center serves the whole of the Franklin Special School District which is approx. 3,300 students. With this number, cost per student is \$5,151 per student.
- Space per Student
  - This Performing Arts Center serves the whole of the Franklin Special School District which is approx. 3,300 students. With this number, space per student is 10.4 sqft per student.



Exterior

# Identification Slide

## Design Team

- Wold Architects and Engineers
  - Principal-In-Charge | Steve Griffin, *AIA*
  - Project Designer | Jared Brown, *AIA*
  - Civil Engineer | Jim Gilliam, *PE*
  - Structural Engineer | Brian Crump, *PE*
  - Photographer | Kristin Rajotte
- Nabholz Construction
  - Construction Administrator | Adam Seiter
- Dewberry Edmonds Engineering
  - Mechanical, Plumbing, Electrical, & Technology | Ricky Bost
- Heibert & Ball Land Design
  - Landscape Architect | Connor Ball
- Kyle Smith & Associates
  - Theatrical Consultant | Kyle Smith
- Name of School
  - Poplar Grove Elementary and Middle School
- Location
  - Franklin, Tennessee
- Owner
  - Franklin Special School District
  - Dr. David Snowden, Superintendent
- Owner's Representative
  - Dr. David Esslinger

