



BRISTOL TENNESSEE
MIDDLE SCHOOL

Secured Main Entry

2022 TENNESSEE CHAPTER *DESIGN AWARDS*

ARCHITECTURAL EXHIBITION & AWARDS

FEBRUARY 23, 2023

THE PLANNING PROCESS

The previous Vance Middle School housed approx. 600 students in grades 7-8 on a 12-acre site. After evaluation of numerous sites, the preferred option was to construct a new middle school on the existing site while maintaining school operations.

During the design, our team met with various stakeholders, including the School Board, Administrators, Supervisor of Facilities and Maintenance, Principal/Staff, City Council, Building Officials, City Engineers, Parents, & Construction Manager. By addressing each group at appropriate stages, our team gained understanding of the concerns and expectations of each.

Community Tectonics was able to create a new three-story classroom design with necessary support areas to accommodate 900~1,000 students in grades 6-8. The design addressed the difficult challenge of the new school to be occupied before the existing building was demolished. Design also included utilization of the existing 37,400 sf gymnasium. Site Amenities include Soccer/Football Field, Track/Field Events, and a new Field House.

SAFETY & SECURITY FEATURES

- Communications system with security cameras throughout.
- Steel bollards for safety at entry points.
- All glass up to 7' high is provided with security glazing.
- Exterior doors numbered for easy identification.
- All exterior and interior doors to classroom wings have remote locking devices controlled from a central point.
- Locking classroom doors controlled by teachers to restrict flow.
- Concrete masonry walls to prevent bullet penetration.
- Glass arranged for entire class to remain out of visibility.
- Centrally located SRO office for direct visibility.



Three-Story Academic Wing with Outdoor Tiered Classroom



Main Entry & Lower-Level Outdoor Dining/Outdoor Art Plaza

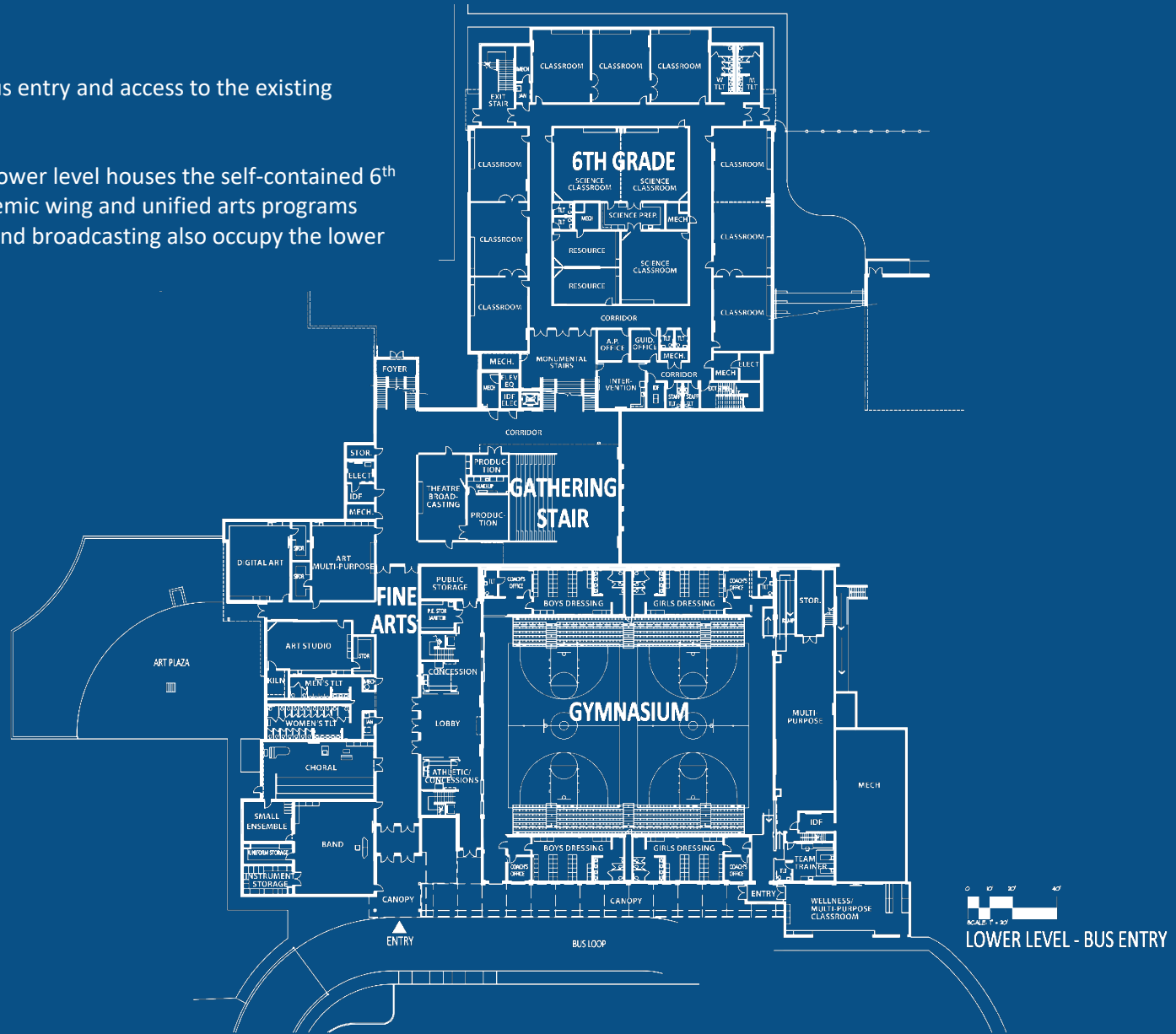


Lower-Level/Bus Lobby Entry

LOWER LEVEL 1 & 1.5

The lower-level lobby provides a bus entry and access to the existing renovated gymnasium.

In addition to the gymnasium, the lower level houses the self-contained 6th grade level of the three-story academic wing and unified arts programs including band, music, choral, art, and broadcasting also occupy the lower level of the school.





Lower-Level Lobby

LOWER LEVEL 1 & 1.5

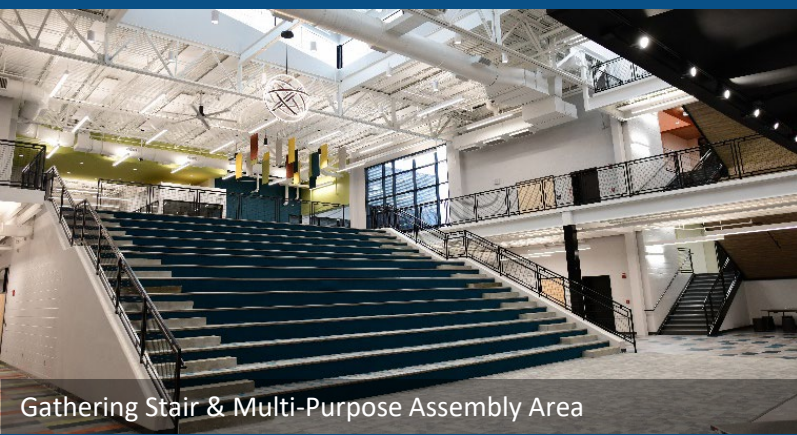
The lower-level provides both a separate entry for students arriving by bus and after-hours access to the gymnasium.

At the heart of the school is its most prominent feature, the Gathering Stair. This public space offers flexible use in an otherwise relatively unused area of the school. Aside from its main purpose of student circulation, it also adds a multi-purpose venue with seating for 300; this space is intended for use with activities such as performances, assemblies, & student collaboration. The Gathering Stair connects the multi-level Main Street, the hub of student activity.

The existing gymnasium was retained to support numerous school functions. Renovations provide the flexibility of multiple courts for basketball and volleyball with upper-level seating for spectators. The gymnasium is large enough to accommodate seating for the entire student body.

COMMUNITY ENVIRONMENT

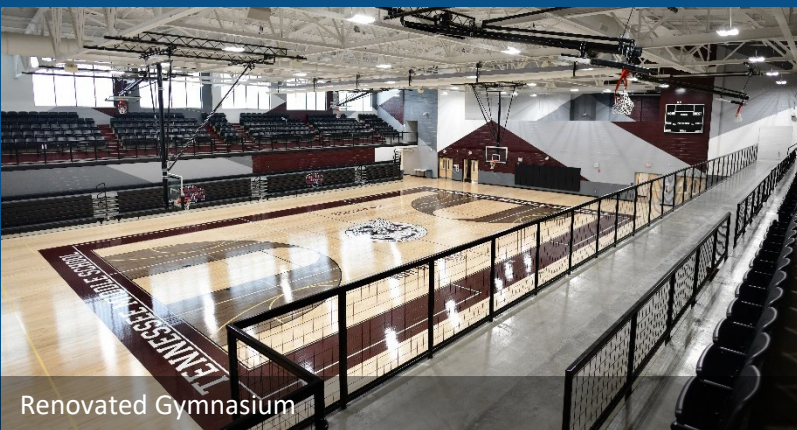
Through the lower-level entry, access to the gymnasium can be obtained when school is not in session while also restricting access to the rest of the building. With maximum seating for up to 1,992 people, the gymnasium can be used for a variety of community functions.



Gathering Stair & Multi-Purpose Assembly Area



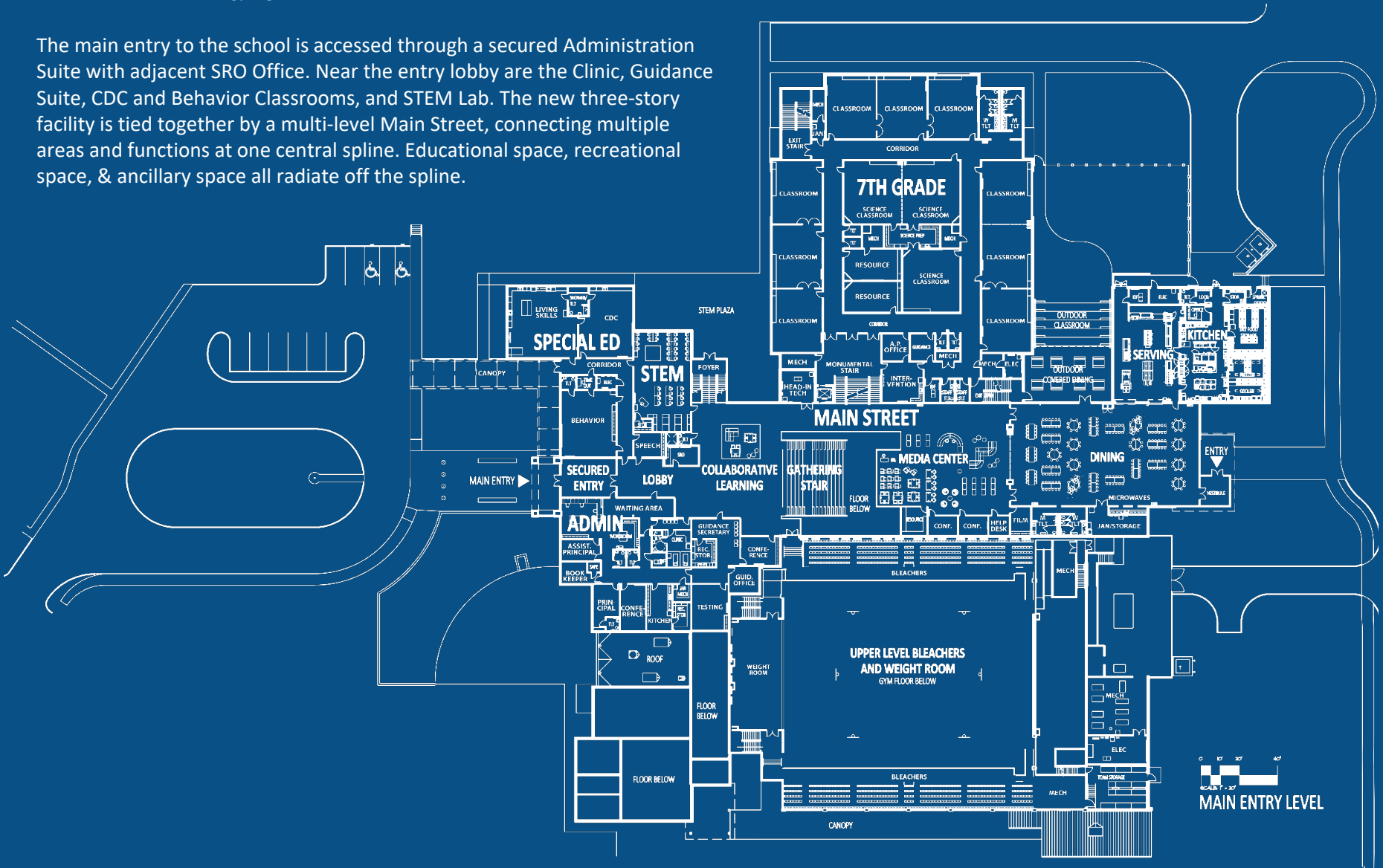
Existing Gymnasium



Renovated Gymnasium

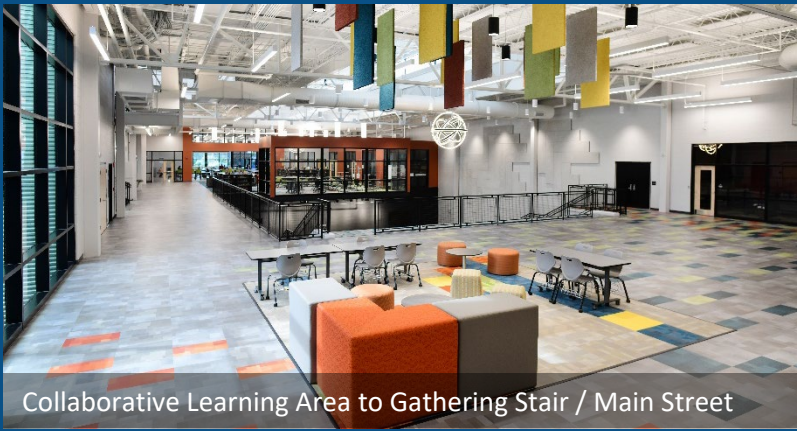
MAIN ENTRY LEVEL 2 & 2.5

The main entry to the school is accessed through a secured Administration Suite with adjacent SRO Office. Near the entry lobby are the Clinic, Guidance Suite, CDC and Behavior Classrooms, and STEM Lab. The new three-story facility is tied together by a multi-level Main Street, connecting multiple areas and functions at one central spine. Educational space, recreational space, & ancillary space all radiate off the spine.





Multi-Purpose Media Center / Main Street



Collaborative Learning Area to Gathering Stair / Main Street



Dining Hall / Main Street

MAIN ENTRY LEVEL 2 & 2.5

Just past the Secured Entry/Lobby, Main Street includes a Media Center, Collaborative Learning Area, Gathering Stair, & Dining Hall. Main Street also provides access to the three-story Academic Wing.

The multi-purpose Media Center contains movable furniture for a flexible learning environment. A resource room and 3 small adjacent conference rooms provide space for focus groups, informal meetings, or quiet study.

The Media Center flows directly into the Main Dining area. These spaces are divided by a glass partition wall, providing privacy, and allowing extra space to the Media Center when the cafeteria is not in use.

The 300-seat open Dining Hall flows directly into an outdoor covered area to provide additional seating.

PHYSICAL ENVIRONMENT

The goal of the design team was to create a space where children love to come and one that facilitates learning. The multi-level Main Street was created as the hub of school activity, with its flexible and easy connection between areas/disciplines, the use of the space has endless potential.

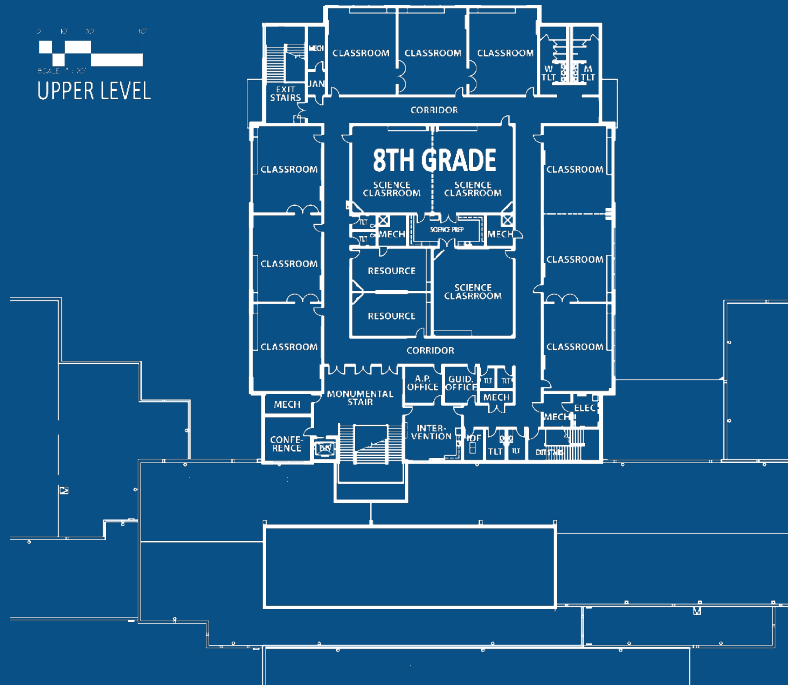
Daylighting is provided to these community areas via traditional windows, clerestory windows, and translucent fiberglass sandwich panels to maximize the use of natural light and minimize use of artificial lighting.

Color was used throughout the facility to enhance overall appearance and to assist in wayfinding. Each grade level has its own color, and you simply follow the color pattern in the floor to find your way.

UPPER LEVEL 3.5

The upper-level of the academic wing houses the 8th grade. Each self-contained Learning Environment is located on its own floor and separated by grade-level. Each Learning Environment contains 9 classrooms, 3 science labs, assistant principal's office, guidance, 2 resource rooms, IDF room, teacher workroom, student toilets, and staff toilets.

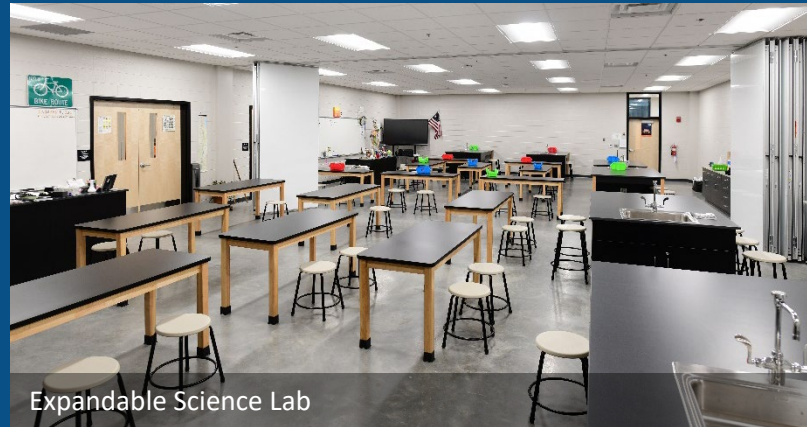
Classrooms and Science Labs on each level of the academic wing are easily expandable for collaborative learning activities. Each space contains movable furniture to allow various types of student grouping for collaborative or individual study.



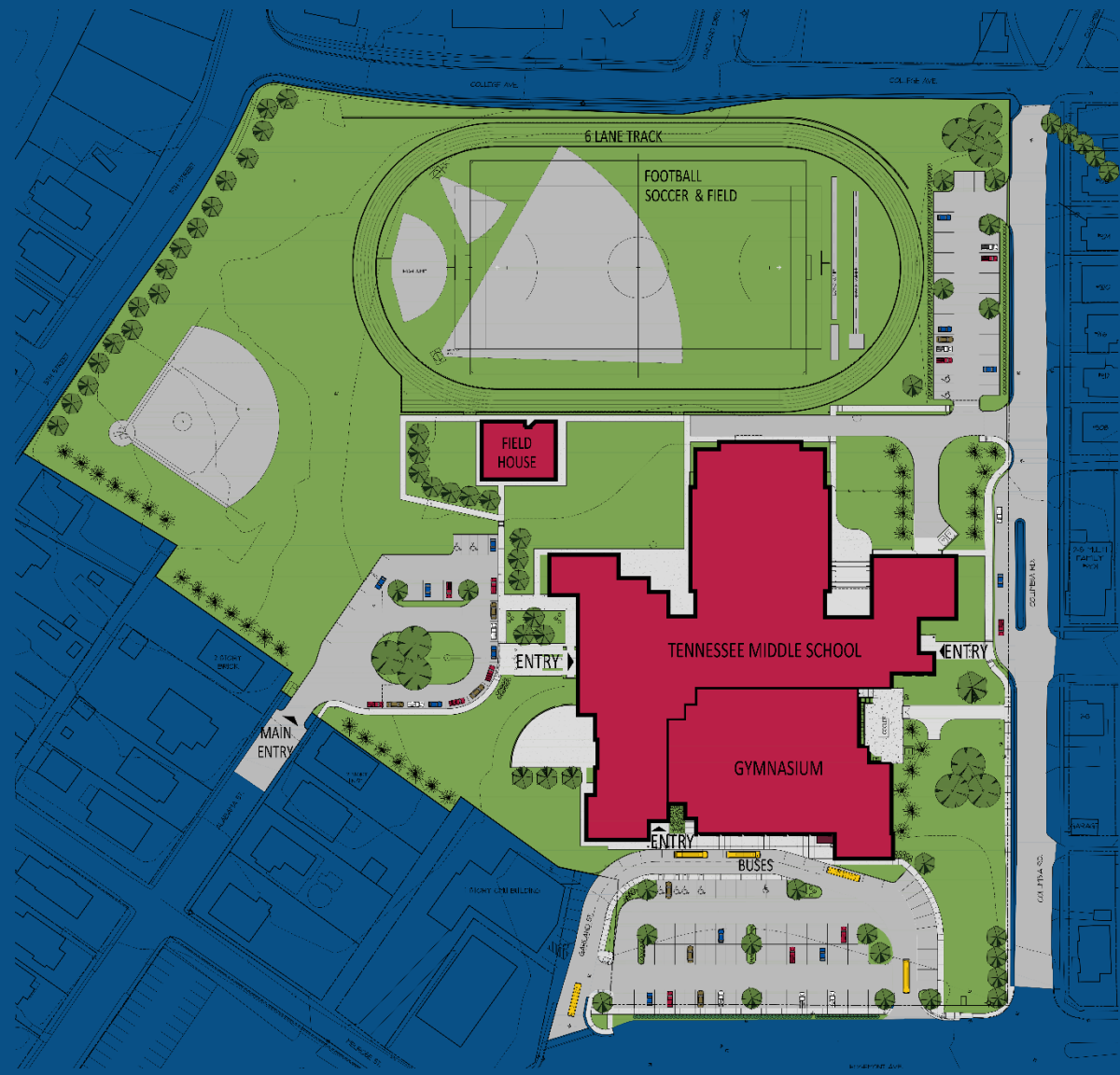
Main Street Access to Academic Wing/Classrooms



Expandable Classroom with Movable Furniture



Expandable Science Lab



DESCRIPTIVE DATA

Size of Site: 12 Acres

Planned Student Capacity: 900 Students

Core Capacity: 1,000 Students

Area of Building: 158,500 SF

- New Area: 121,100 SF

- Renovation (Gym & Lockers): 37,400 SF

Total Project Cost: \$31,537,167*

- Cost per Square Foot: \$198.97/SF*

- Square Foot per Student: 158.5 SF/Student

- Cost per Student: \$31,537.17/Student*

*Total project cost includes building, site (preparation, development, & landscaping), fixed furniture & equipment, and food-service equipment.

Bristol Tennessee Middle School

Bristol, Tennessee

Owner: Bristol Tennessee City Schools
Owner Rep.: Dr. Annette Tudor, Director of Schools

Design Firm: Community Tectonics Architects, Inc.
Donald P. Shell, Recognized Educational Facility Planner
William C. Vinson III, Principal-in-Charge
Paola Martinez, Project Designer
Allison Pelham, Interior Designer
Michael Kearney, Construction Administrator

Engineers: Civil: Dave Wilson, Mattern & Craig
Structural: Steve Wilson, Spoden & Wilson
Mechanical: Henry Welch, Mechanical Design Services
Electrical: Ron Carter, West Welch Reed Engineers

Builder: BurWil Construction Company
Nick Self, Project Manager

Photographer: Neil Crosby, Neil Studios



Gathering Stair