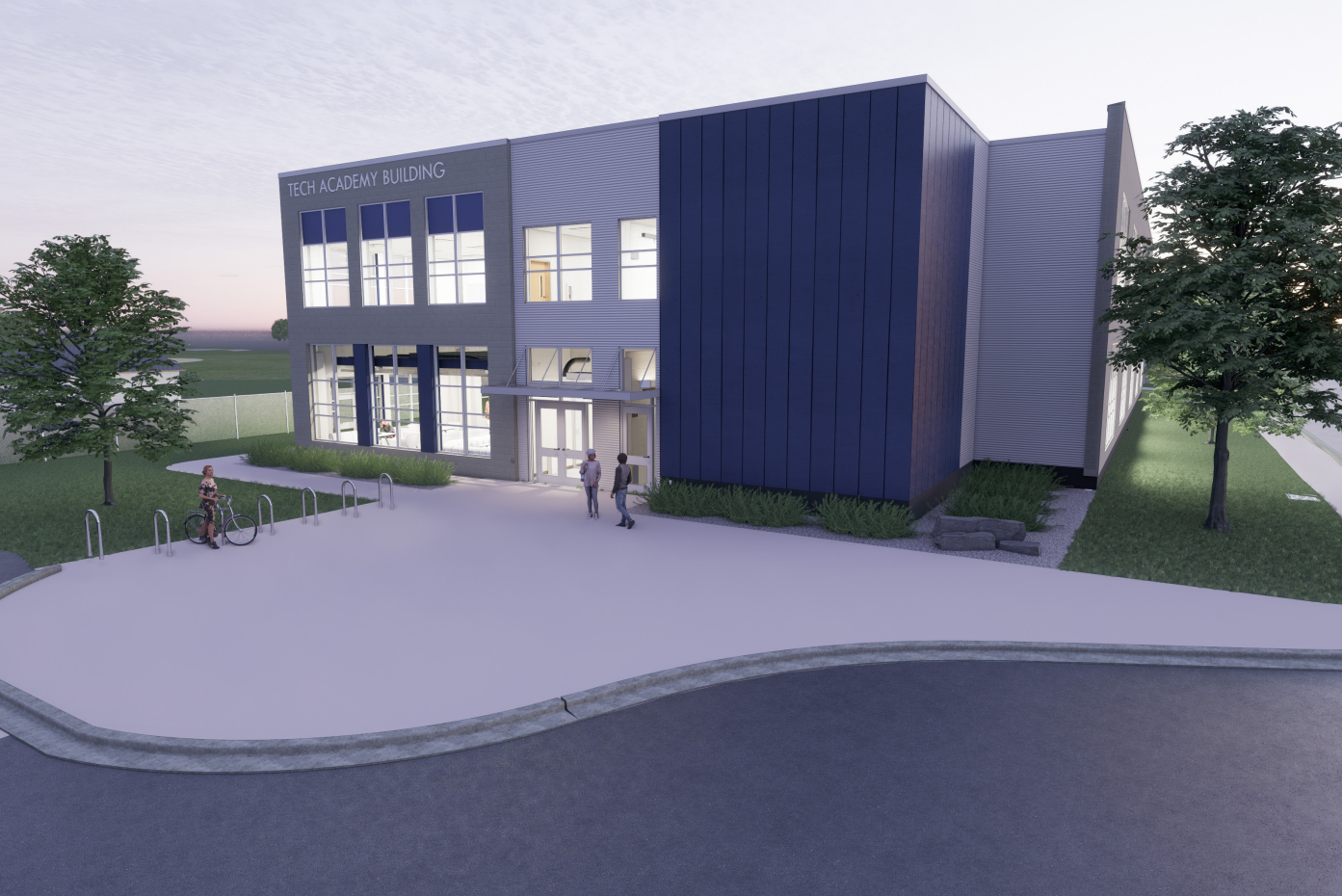


CHARLOTTE-MECKLENBURG SCHOOLS GARINGER HIGH SCHOOL NEW BUILDING/RENOVATION

Charlotte, NC





YEAR COMPLETED

Est. 2022

DELIVERY METHOD

Construction Manager at Risk

SIZE

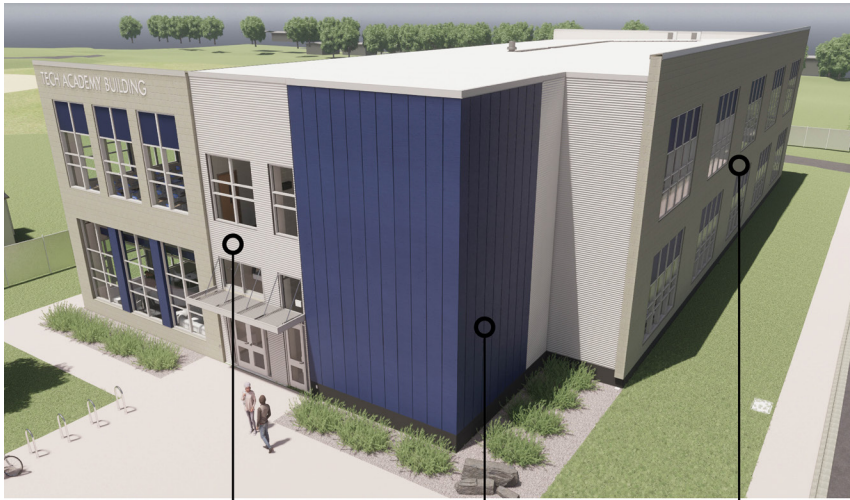
30,000 SF Addition

GRADES SERVED

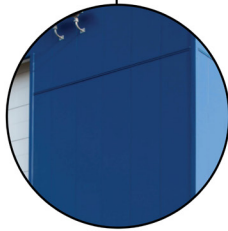
9-12

The new two-story Career and Technical Education (CTE) classroom building for Garringer High School will house 17 technology-focused learning spaces for programs such as computer programming, digital graphics, and game design. The 30,000 SF freestanding building complements the existing modernist aesthetic of the 1959 Historic Landmark campus designed by the renowned regional architect A.G. Odell, Jr. The form, height, materials, and detailing quote the existing campus palette while reinterpreting it for contemporary use; the rhythm of the aluminum storefront window system echoes the fenestration and rhythm of adjacent buildings, and the coordinating metal panel accents invert the design of nearby classroom facilities. Other contextual exterior materials include ground-face concrete masonry and anodized textured insulated metal panels.

The technology infrastructure will support flexible learning environments throughout the building, and a “technology hub” large-group learning center will provide break-out areas for collaboration and larger presentations. The first floor houses CTE labs, conference and administrative spaces, and tech hub which will serve as a flexible gathering and collaboration space. The second floor houses general classrooms, marketing labs, and additional CTE lab, and support spaces.



ANODIZED TEXTURED
INSULATED METAL PANEL



ROYAL BLUE
INSULATED METAL PANEL



GROUND-FACE CONCRETE
MASONRY (POLISHED)

THE BUILDING MATERIAL PALETTE aims to reflect the existing building materials of the historic campus. The palette is deferential without directly mimicking the existing architecture, in keeping with article 4 of the Secretary of Interior's Standards for Historic Preservation.



EXISTING CAMPUS IMAGERY

