



Walls That Speak:

Branding and Graphics for Fun, Engaging Schools

AIA #: [NEED](#)

April 3, 2026

Walls That Speak: Branding and Graphics for Fun, Engaging Schools

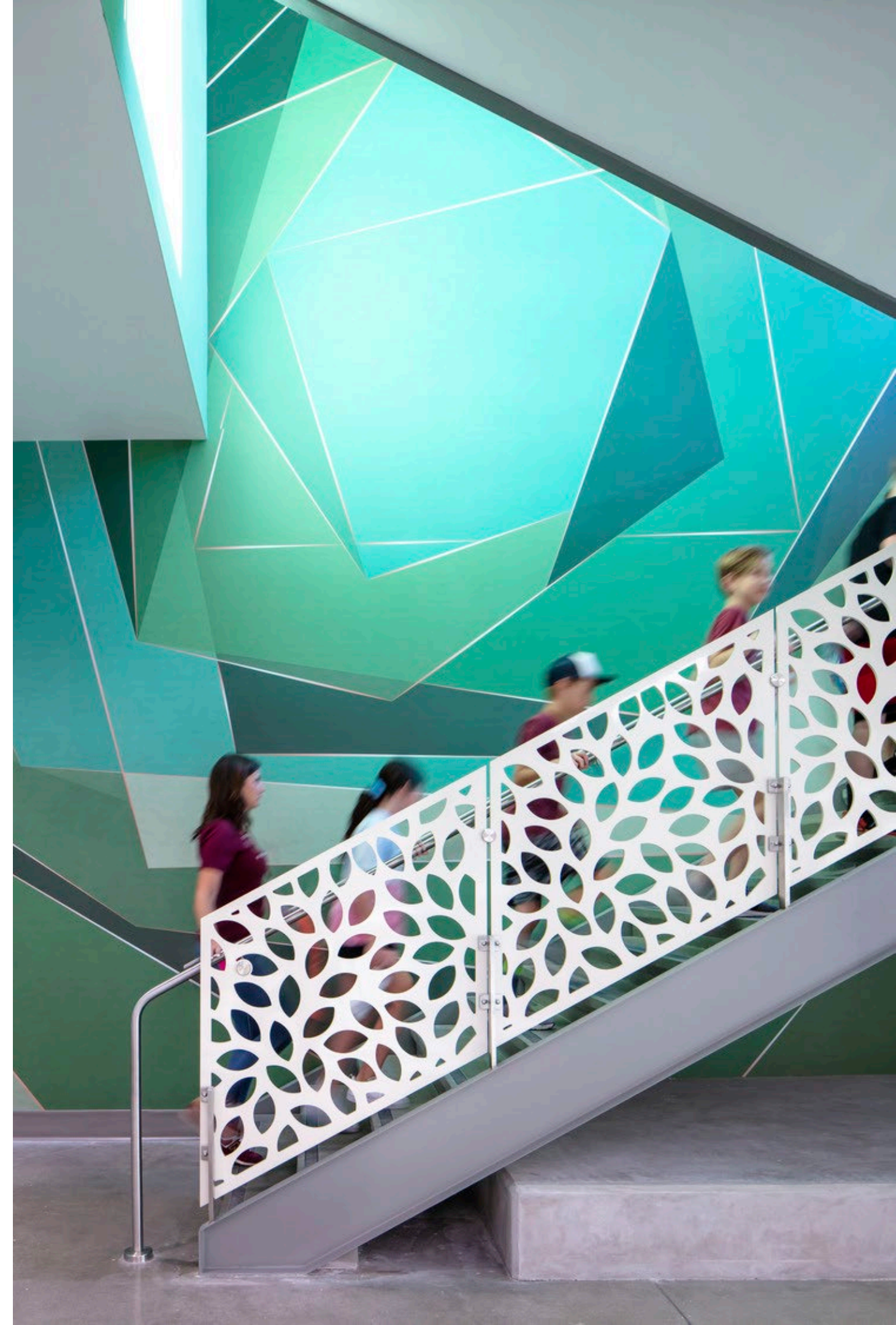
Introductions



Jason Mellard
Senior Project Manager
Corgan



Namrata
Project Architect
Corgan



A photograph of a classroom or study area. Three students are seated around a round table, focused on their work. The background wall is covered in a large, stylized mural of a tiger's face, rendered in yellow and black outlines. Another student is blurred in the background, walking past. The overall scene is dimly lit, with the mural providing a strong visual anchor.

Why Identity Matters in Schools



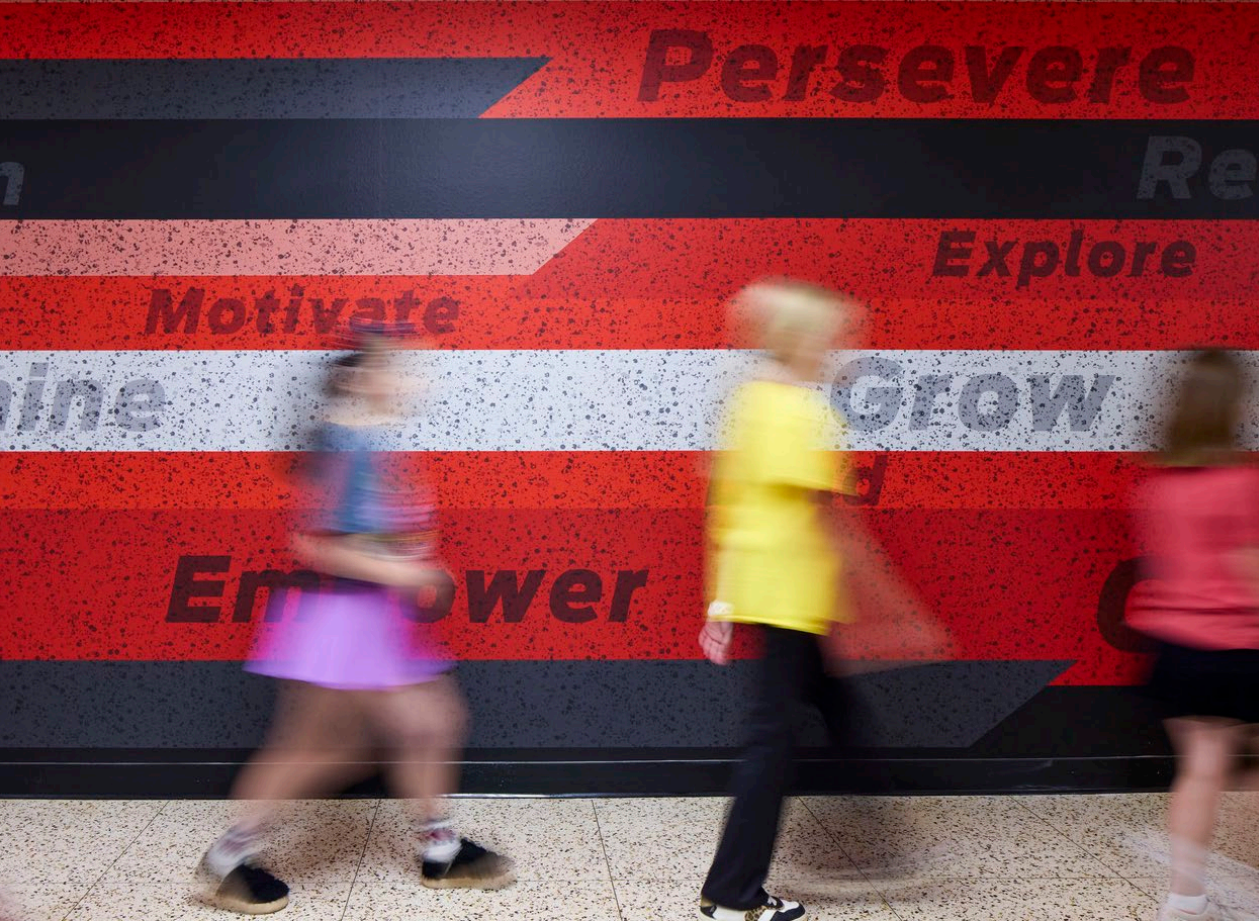
The Power of Visual Identity

Identity sets the stage for how students connect with their environment.

It's not decoration, it's a communication tool that reinforces values and expectations.

Students experience school visually first, before they read a word or meet a teacher.

A strong visual identity creates clarity, consistency, and emotional resonance.



Branding Communicates Mission & Culture

Students respond to consistent cues like colors, mascots, icons, and symbols they see every day.

Branding helps reinforce messages about learning, character, and community.

When visuals tell a cohesive story, the campus experience feels intentional and welcoming.



Branding Builds Pride & Belonging

A strong identity helps students feel part of something bigger.



Branding creates an emotional connection between students and their school.

Identity brings together students, staff, and families, boosting school spirit and unity.

Clear, uplifting visuals help shape a positive everyday experience across the campus.



Storytelling Through Environmental Graphics

Graphics transform
everyday spaces
into places
that teach.



Various styles bring different parts of the school's story to life.

**LEGACY
MEMORABILIA**

**MODERN
SIGNAGE**

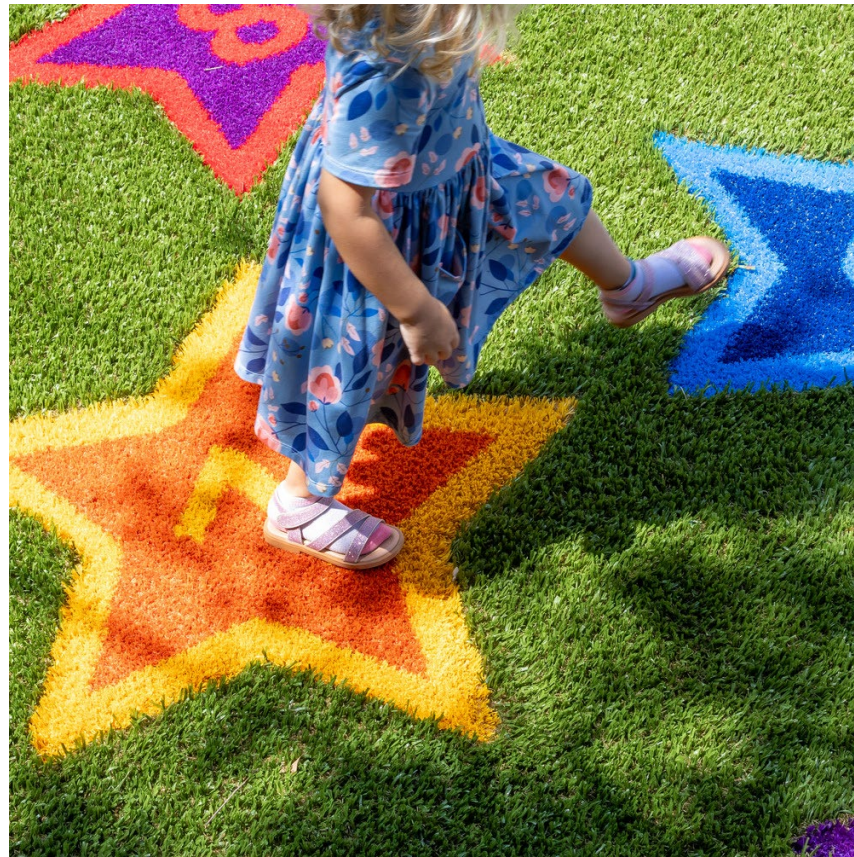


HISTORICAL IMAGERY



Once students recognize the stories embedded in the space, the environment becomes something they can interact with—not just look at.

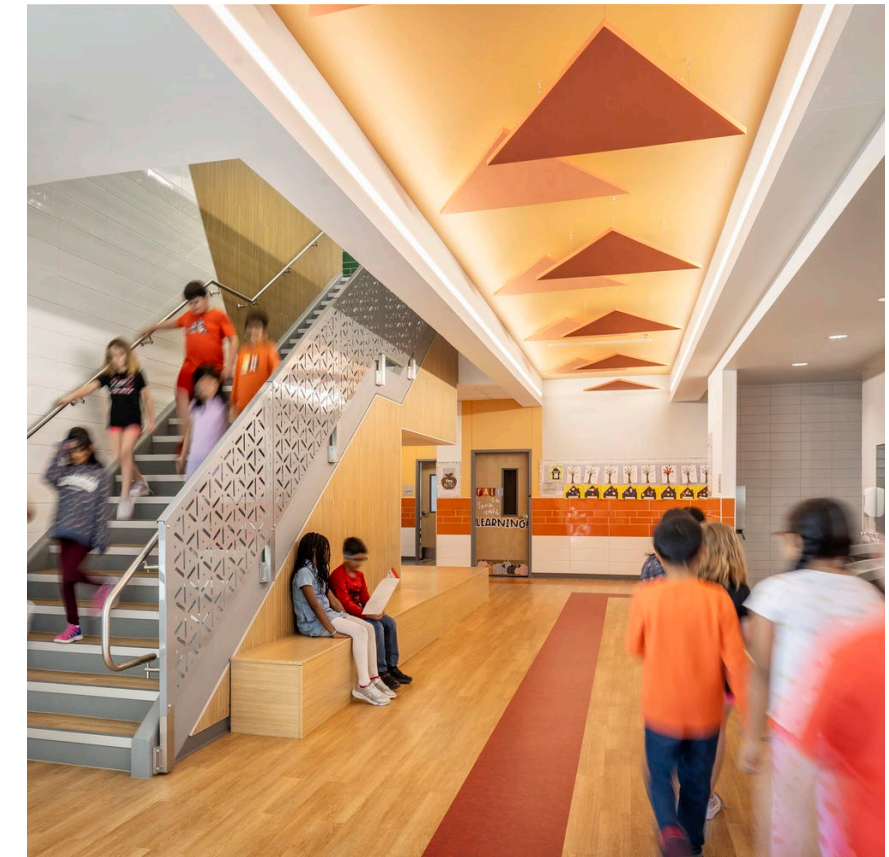
Interactive elements encourage curiosity and spark joy.



Interactive elements encourage kids to stop, explore, and connect.

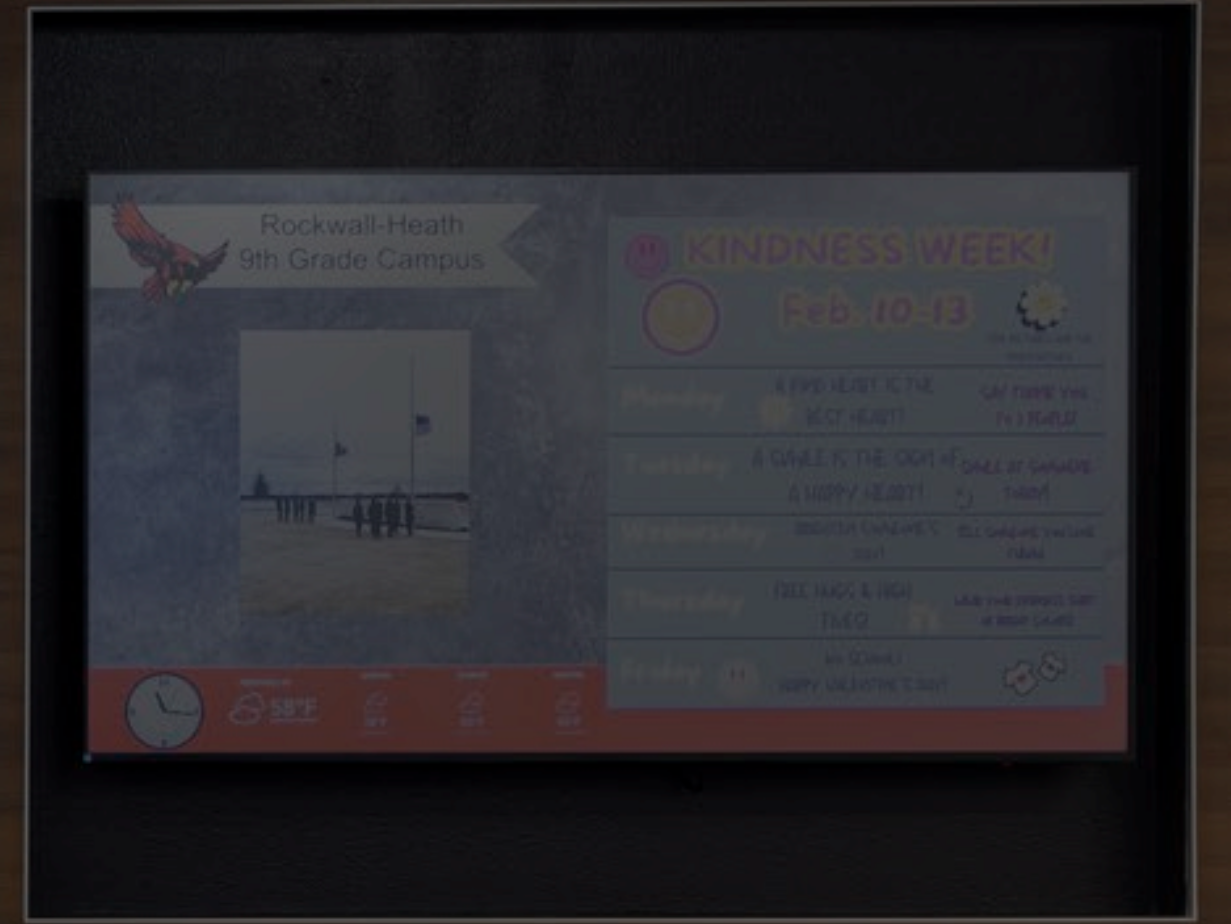


These moments of delight help build positive emotional ties to the school environment.



Wayfinding icons become fun, memorable symbols students love.

Engage



Integrating Branding with Architecture



Successful environmental design follows the building's natural rhythm, circulation paths, daylight, and material finishes.

Good graphics respect the building; great graphics elevate it.

- Graphics support how students move, gather, and interact with the space.
- The goal is to create visuals that feel integrated, not “stuck on.”
- When graphics align with architecture, the environment feels cohesive, intentional, and easy to navigate.

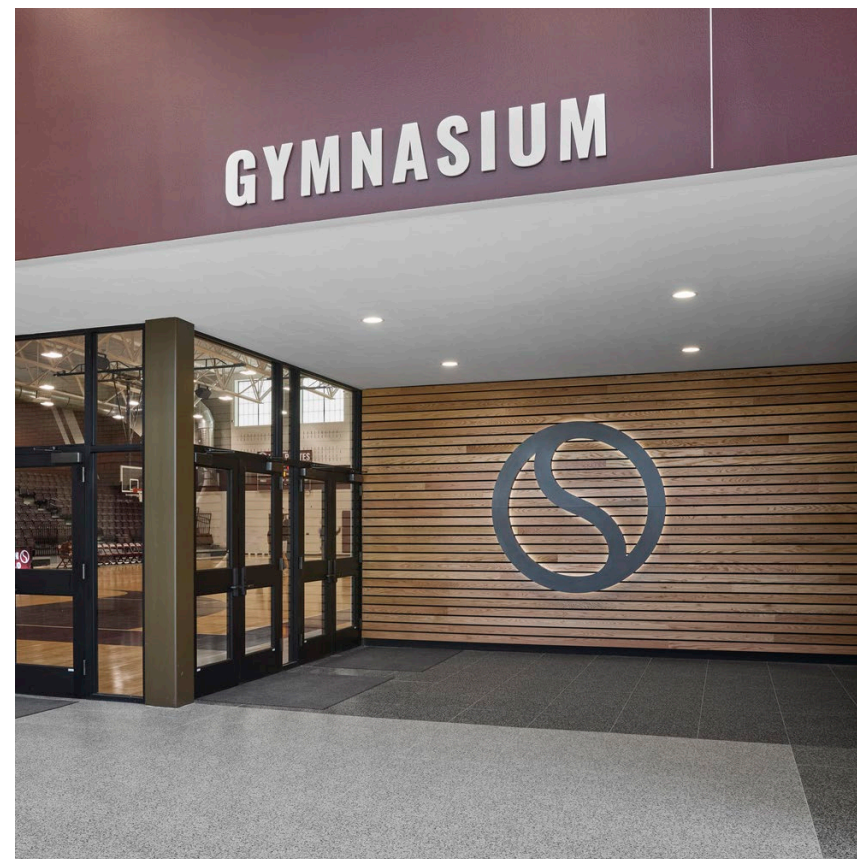


Signage & Wayfinding as a Branding Tool

When navigation feels easy, the whole campus feels more welcoming.



Color-coded zones help students, staff, and visitors navigate intuitively.



Consistent colors, shapes, and signage styles turn wayfinding into a recognizable visual language.

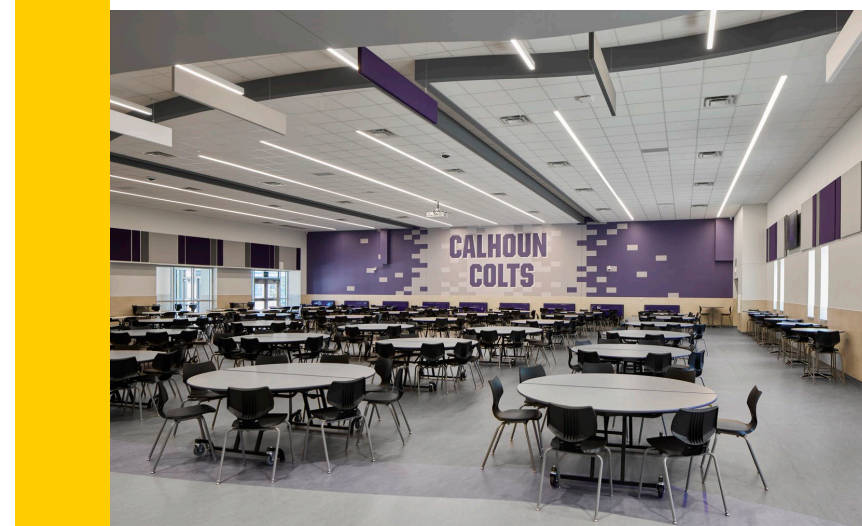


Wayfinding reduces confusion and builds confidence and independence for students.

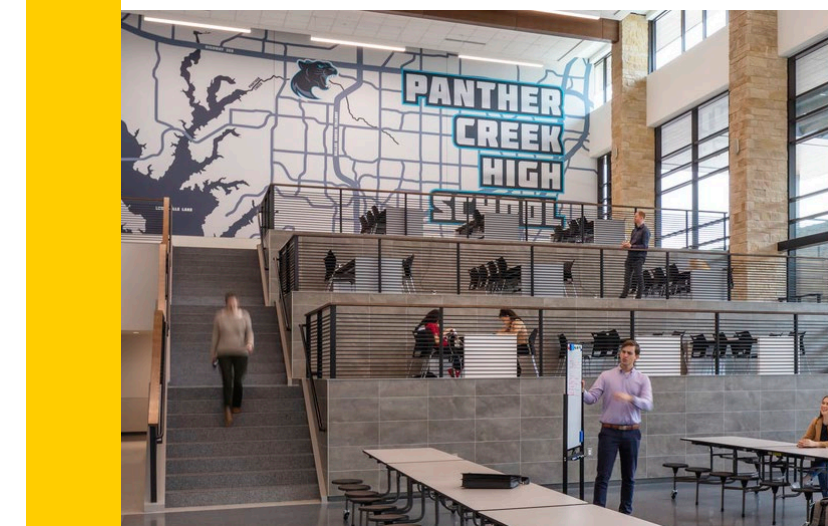
When brand and architecture work together, campuses feel unified and memorable.



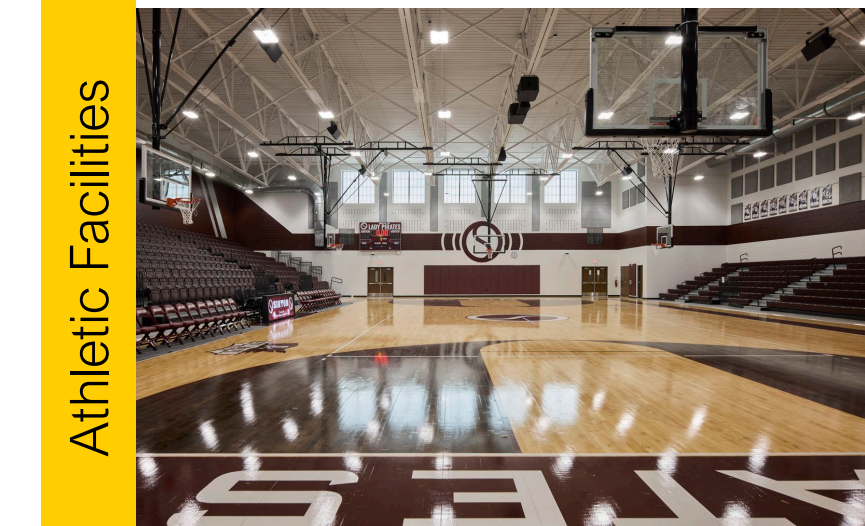
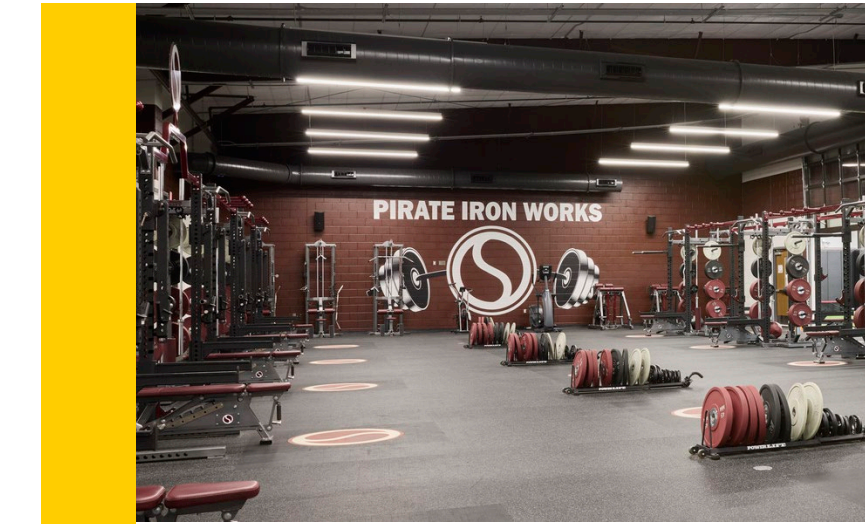
Elementary School



Middle School



High School

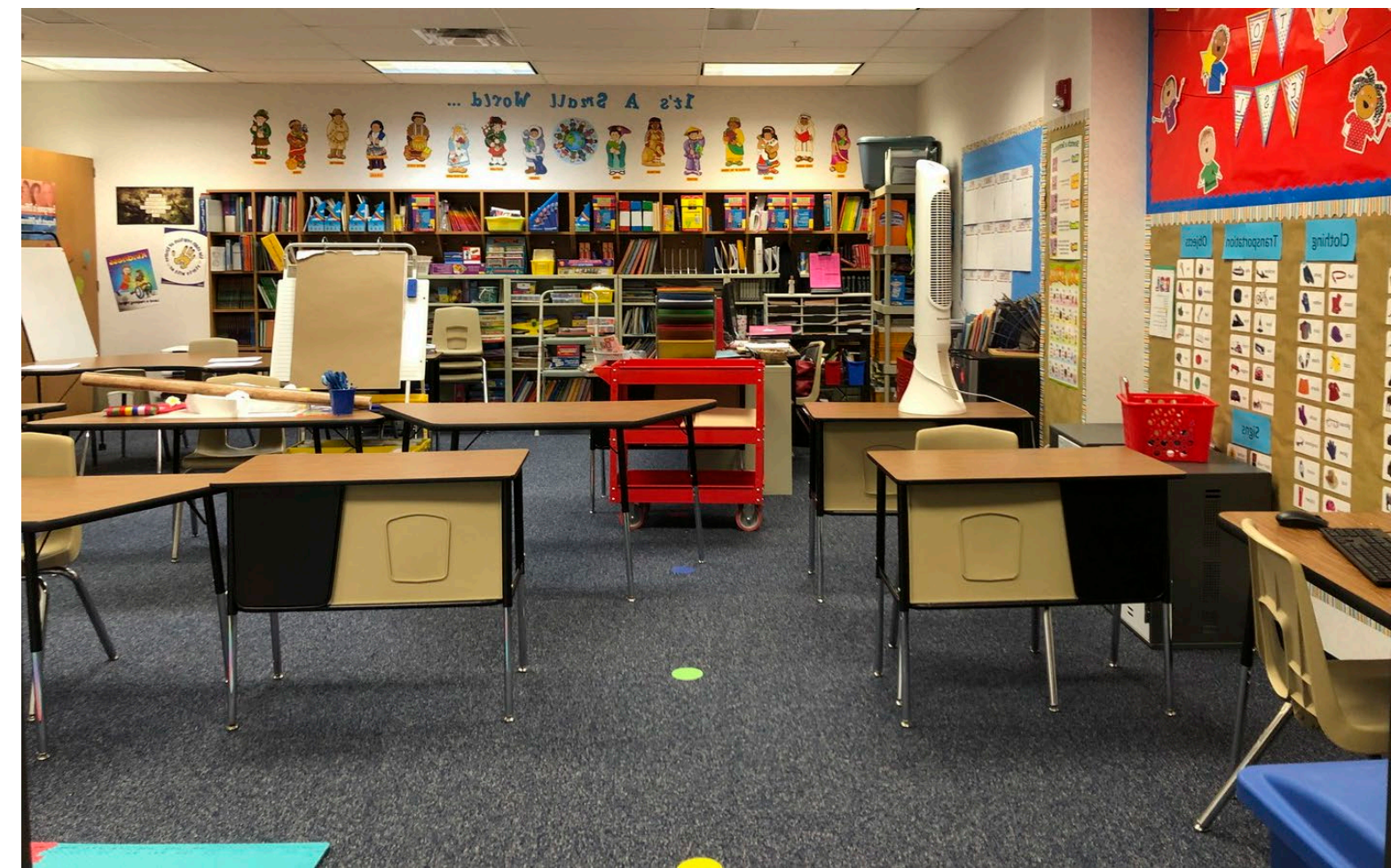


Athletic Facilities

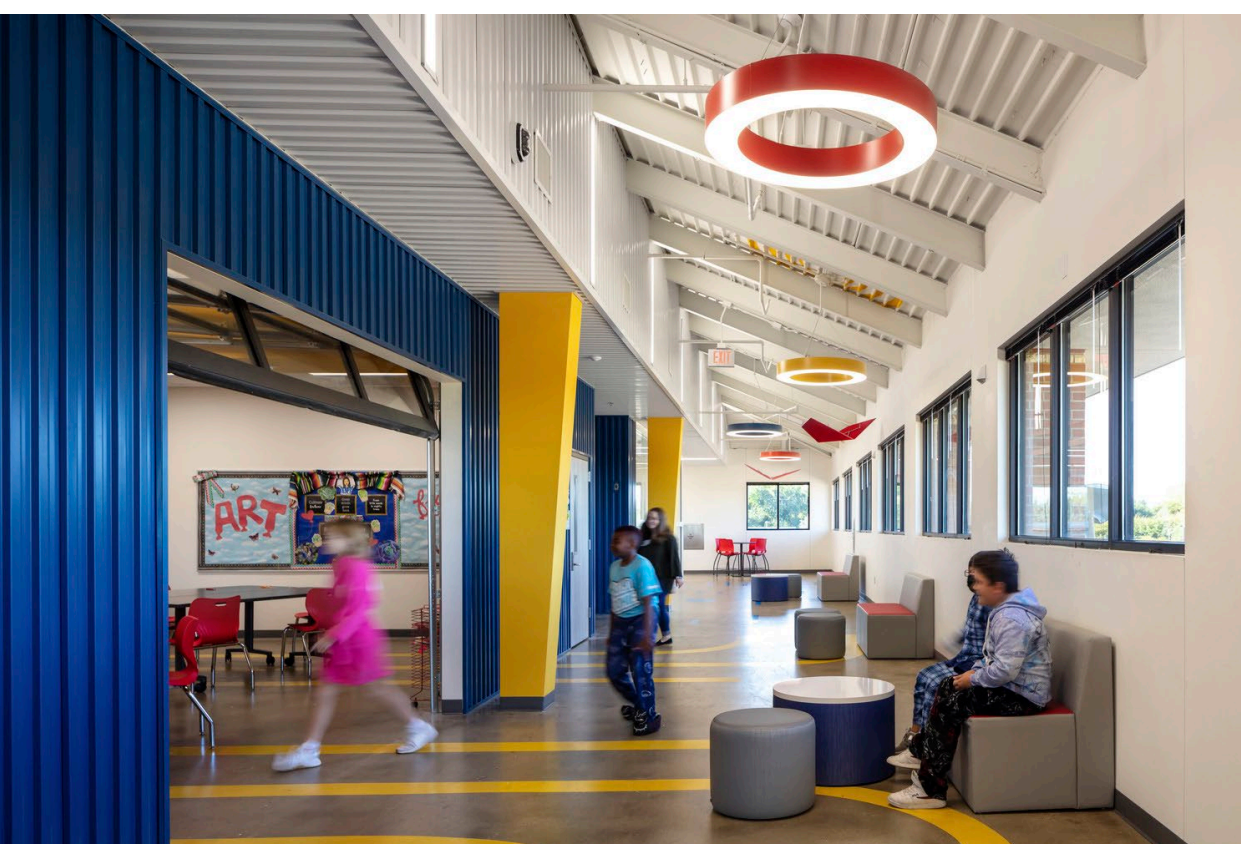
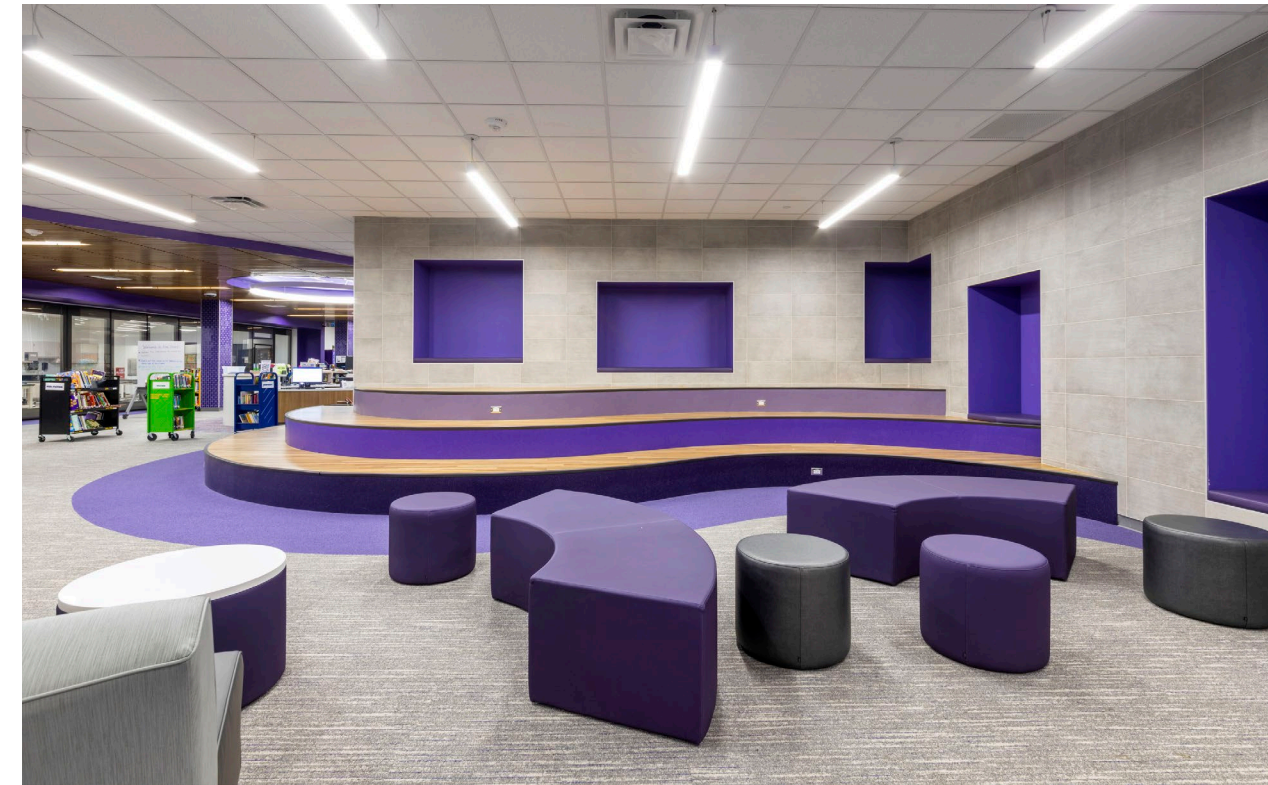


Bringing It to Life: Case Studies + Practical Strategies

Transforming
spaces to shape
identity.



Allen ISD Multiple Elementary School Renovations



Where identity
becomes a place.

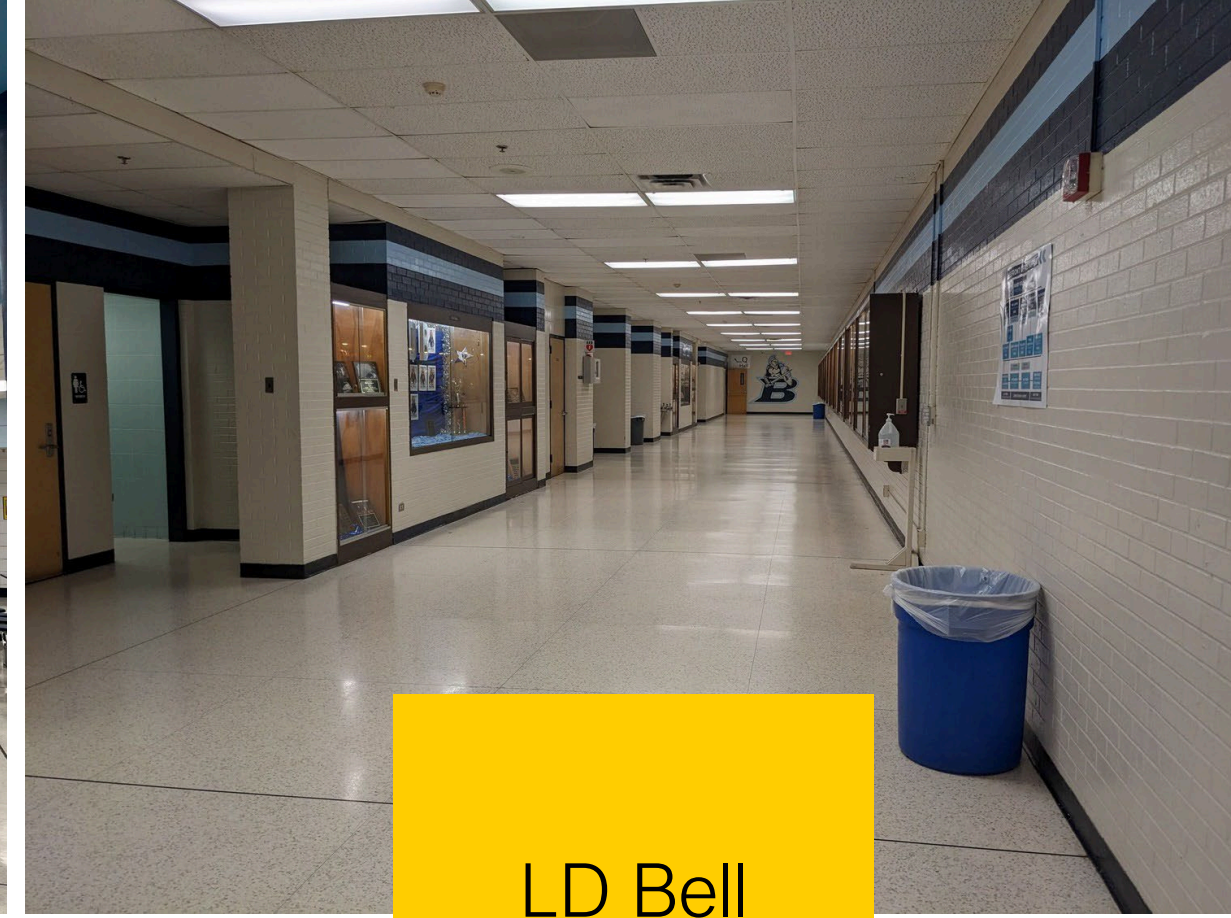


Arlington ISD Joey Rodriguez Junior High School



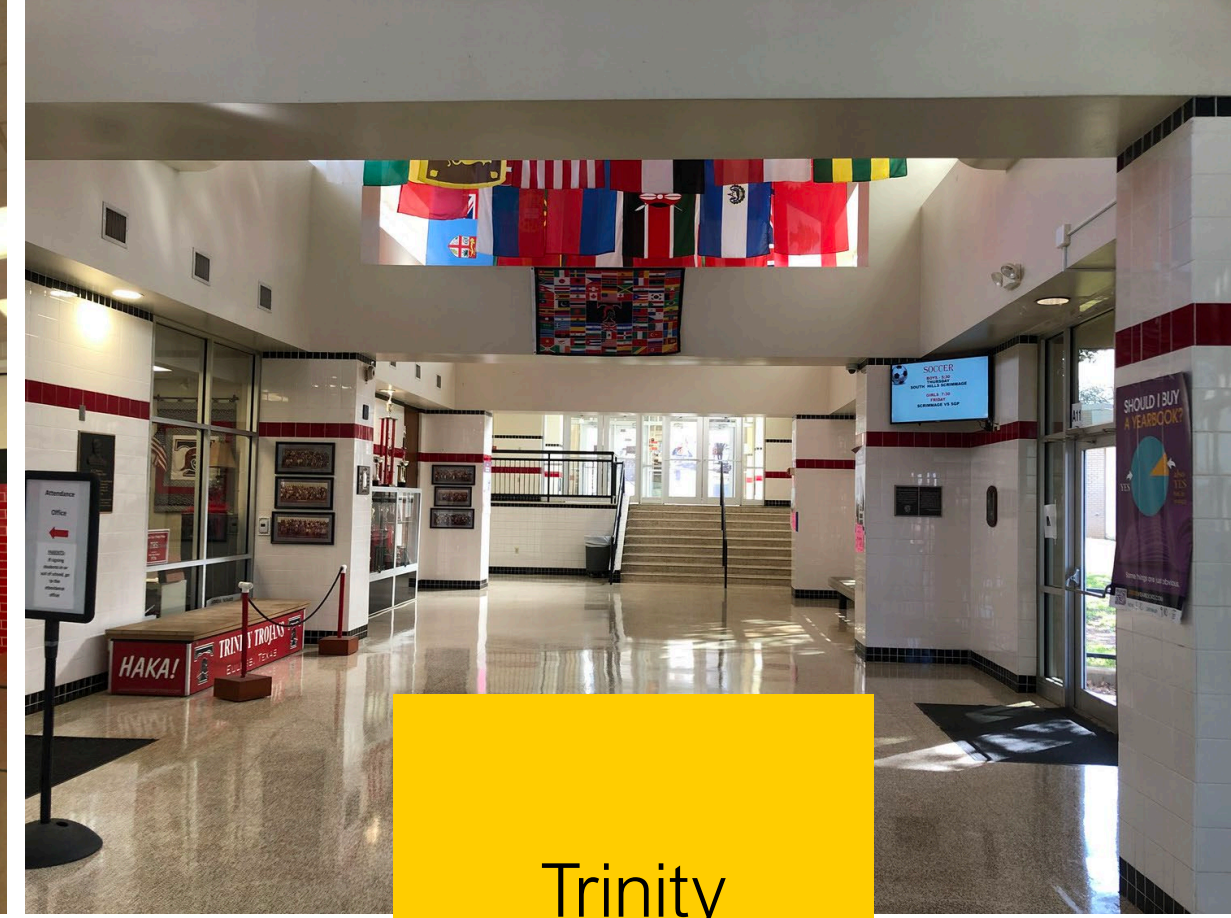
Branding that
inspires pride.





LD Bell
High School





Trinity High School

