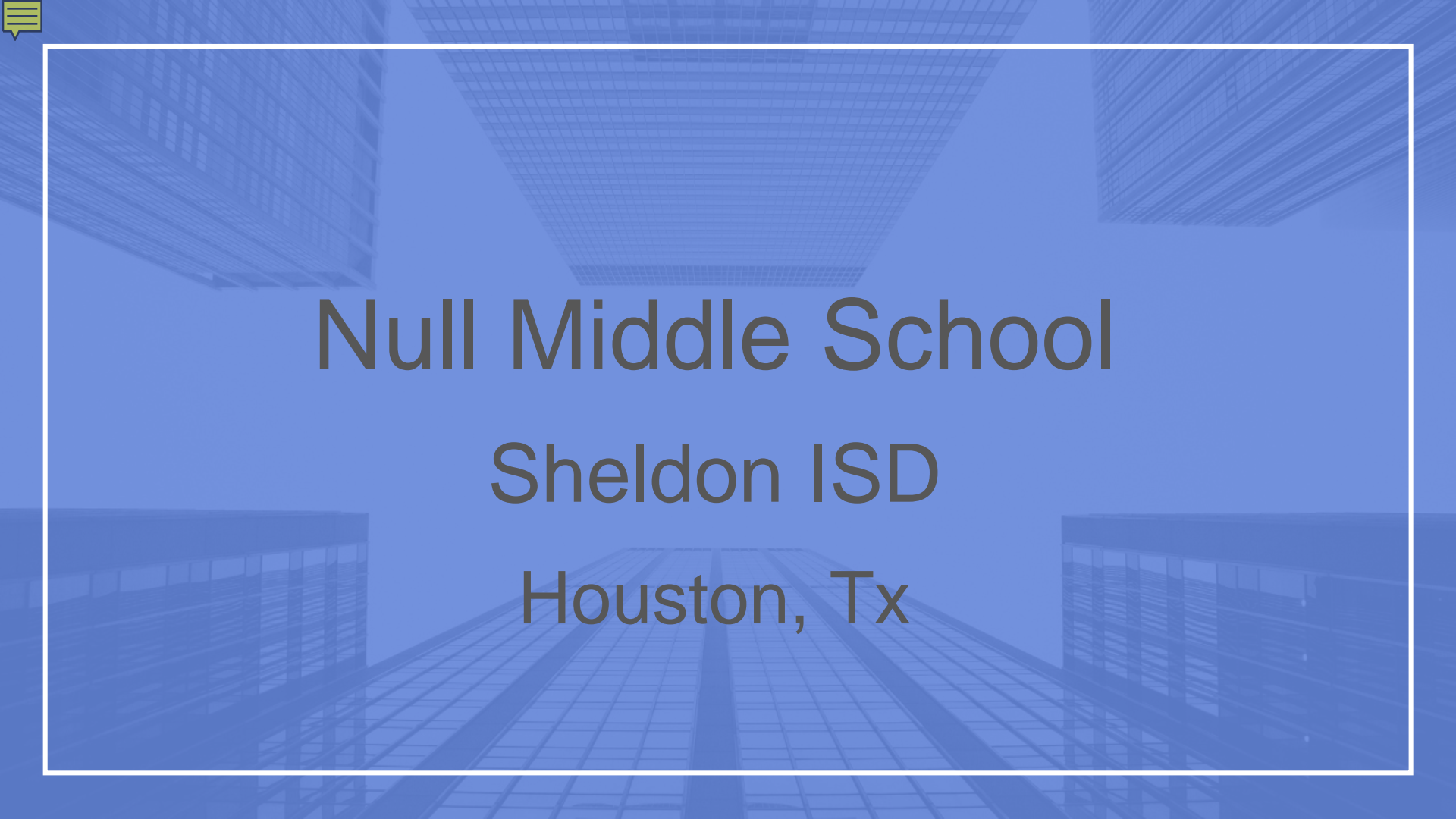




*Kinnected Academy...
Unlocking the Potential*



Null Middle School
Sheldon ISD
Houston, Tx



Planning

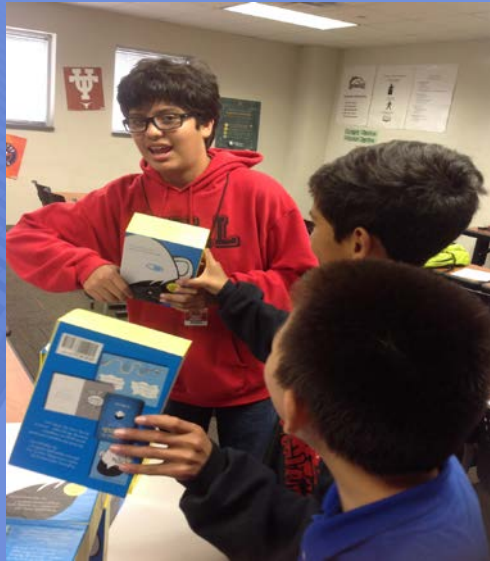
Kinnected Academy...
Unlocking the Potential





Team Work!

We got by with a little help from our friends...and a whole bunch of recycled materials!



OUR PROCESS

Consulted with district
specialist.

Finalized
Research

Student Survey

Top Preferred Features

Survey Results

	6th Grade	7th Grade	8th Grade
Retractable Roof	1st	3rd	1st
Greenhouse	3rd	2nd	3rd
Study Stairs	2nd	1st	2nd



Community

Importance

Importance of community involvement :

- Make a difference in lives
- Learn about the community
- Partnership with the community
- Support the Communities
- Helps students enhance their knowledge, earn new experience, and develop new skills

Shared Community Resources

- **24 hour Community Library/Multimedia Center**
- **Counseling Services**
- **Medical Services/Clinic**
- **A School Garden**
- **A Fitness Center**
- **Adult Education**
- **Farmer's Market**
- **Bike/Jogging Trail**



Sustainable Design

Kinetic Energy

Our bike/jogging trail is unique because we will be using piezo tiles!

- Shared Resource
- Reduce energy cost
- Promotes fitness
- Community contributes to energy production



Piezo Tiles

We incorporated this technology throughout our entire campus! Other areas include:

- Hallways
- Dancing Room
- Cafeteria/ Gym
- Band (installed in the instruments)
- Ergonomic furniture (encourage movement)

Smart Energy Floors



Solar Energy

Why Solar Panels at our School?

Solar panels help create clean green electricity.

- On average, there are 204 sunny days per year in Texas.
- In those 204 days, the average temperature is around 93 degrees fahrenheit
- Our design already consisted of many windows
- We hope they will serve as an example to our community for future design.



Glass Solar Panels

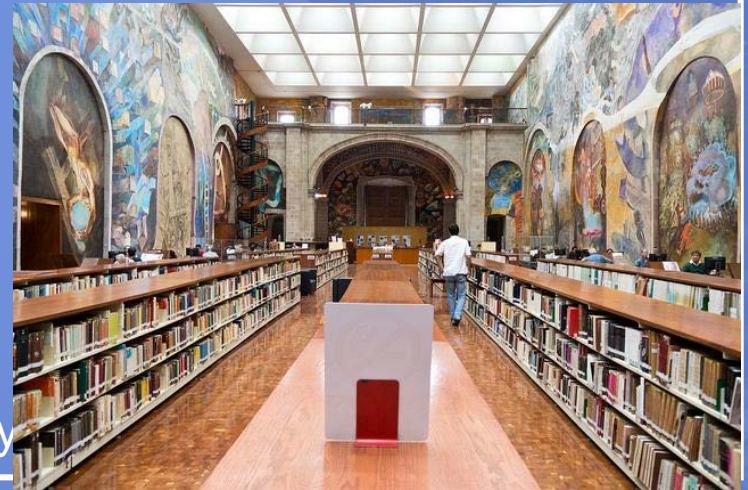




Learning Spaces

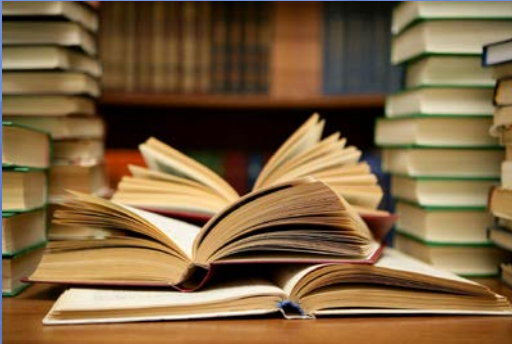
Learning Spaces Features

- Educational
- Fun
- Themes
- Colorful
- Subject Specific
- Labs
- Virtual Reality Technology
- Student Centered



Curriculum

- College Readiness
- Learning Styles
- Independent Study
- Project-Based
- Student Teaching
- Specializations (Focus)
- Work Study




Specialties

- Kinesiology
- Medical (doctor, pediatrician, veterinarian, sports medicine)
- Engineering

Physical Education

- Our School will have a strong focus on physical education.
- Students will take two PE classes a day. (tradition and flexible)



Physical Features

- Study Stairs
- Fountain
- Water Harvesting
- Solar Panels
- Greenhouse/ Garden
- Dancing Room (Piezo tiles, pedometer)



In Conclusion



THANKS

Any questions?

References

Bike Trail

Photo taken by: Warren Long

Retrieved from <https://www.flickr.com/photos/warrenlong/>

Books

Photo taken by: Abhi Sharma

Retrieved from <https://www.flickr.com/photos/abee5/8314929977>

Classroom

Photo taken by: U.S. Army IMCOM

Retrieved from <https://www.flickr.com/photos/imcom/>

Learning Space

Photo taken by: Danny Munnerley

Retrieved from <https://www.flickr.com/photos/munnerley/>

References

Mural

Photo taken by: Ismael Villafranco

Retrieved from <https://www.flickr.com/photos/maelvillafanco/>

Solar Panels

Photo taken by: Under CCO copyright/public domain

Retrieved from <http://negativespace.co/photos/skyscrappers/>

Hamza Ahmad (2016, January 28) This Transparent Solar Panels Could Turn Any Window Into A Power Generator

Retrieved from <https://www.youtube.com/watch?v=f3RgaUovQbw>

Smart Energy Floor (2015, January 5) Smart Energy Floor-Get Energy By Walking

Retrieved from https://www.youtube.com/watch?v=wxQumU_Jnil