



Transforming Tacoma

Advancing Maritime Careers & Revitalizing the Waterway

Port of Tacoma / Tacoma Public Schools
Maritime 253 Skills Center



Today's Presenters



**Brian Ho, AIA, ALEP,
LEED AP, DBIA**
Principal-in-Charge on Project
TCF Architecture



Sheena Hewett, Assoc. AIA
Project Designer on Skills Center
TCF Architecture



Adam Kulaas
Director of Innovative Learning
Tacoma Public Schools



Stanley Ryter, PE, PMP
Senior Project Manager
Port of Tacoma



Objectives

- Education and industry alignment
- Key steps and processes in forming successful partnerships
- Innovative approaches to Career and Technical Education (CTE)
- Revitalization of underutilized area through strategic partnerships

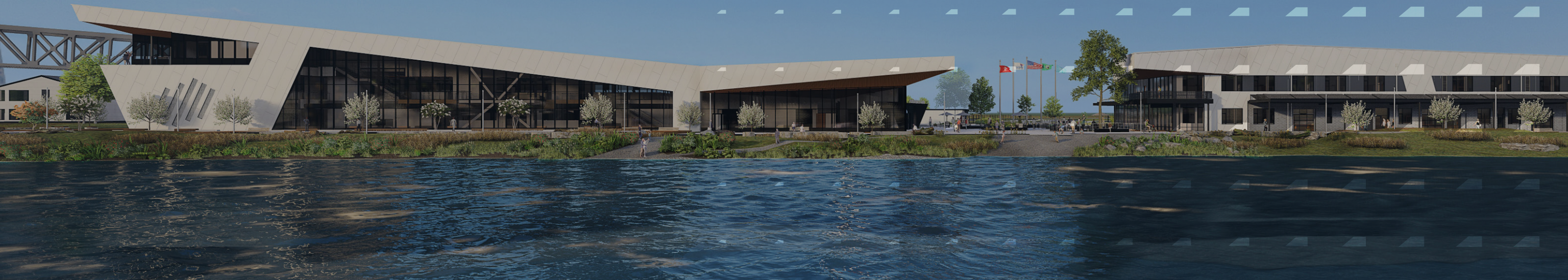
Agenda

- 01** Project Introduction
- 02** Successful Partnership Between TPS & PoT
- 03** Design Overview
- 04** Future Thinking
- 05** Question & Answer

01

Project Introduction

Why This Skills Center Matters



Why This Project Matters to Tacoma and Our Students

Industry Alignment & Relevance



Scale & Systems Impact

Community & Economic Ripple Effect



02

Successful Partnerships

Tacoma Public Schools
& Port of Tacoma for
Workforce Development



How This Project Began



Core Partners

Tacoma Public Schools
Port of Tacoma
BNBuilders
TCF Architecture

Public Organizations

BNSF
NW Seaport Alliance
City of Tacoma
12 School Districts
Puyallup Tribe

Private Organizations

Local Industry
Neighbors
Tenants
Non-Profits

Public

General Public
Families
Clubs - Canoe / Kayak

Industry & Community Partners

- Office of the Superintendent of Public Instruction (OSPI)
- Port of Tacoma
- City of Tacoma
- Tacoma Pierce County Chamber of Commerce
- Pierce County Building and Construction Trades Council
- Career Connect Washington
- Northwest Seaport Alliance
- Association of General Contractors (AGC)
- Workforce Central
- Macmillan Piper
- Motive Power Marine
- Safe Boats
- Tacoma Rail
- Maritime Blue
- TOTE Maritime
- Youth Marine Foundation
- Foss Maritime
- Association for Career & Technical Education (ACTE)
- Seafarers International Union (SIU)
- The Northwest Maritime Center
- The Northwest Maritime Center
- Youth Maritime Collaborative
- Tacoma Propeller Club
- Transportation Club (Tacoma)
- Getting Smart
- Communities for a Healthy Bay
- Washington STEM
- Tacoma Boat Builders
- MITAGS, Maritime Institute of Technology and Graduate Studies
- Washington State Skill Center Association
- Manufacturing Industrial Council

School District Partners

- Chief Leschi Schools
- Dieringer School District
- Fife Public Schools
- Franklin Pierce School
- District Orting School District
- Puyallup School District
- Steilacoom Historical School District
- Sumner-Bonney Lake School District
- Tacoma Public Schools
- White River School District



Port of Tacoma Strategic Plan

Organizational Success OS-4

Plan design and construct a new Port staff workspace that also provides spaces for community engagement and mixed use opportunities.

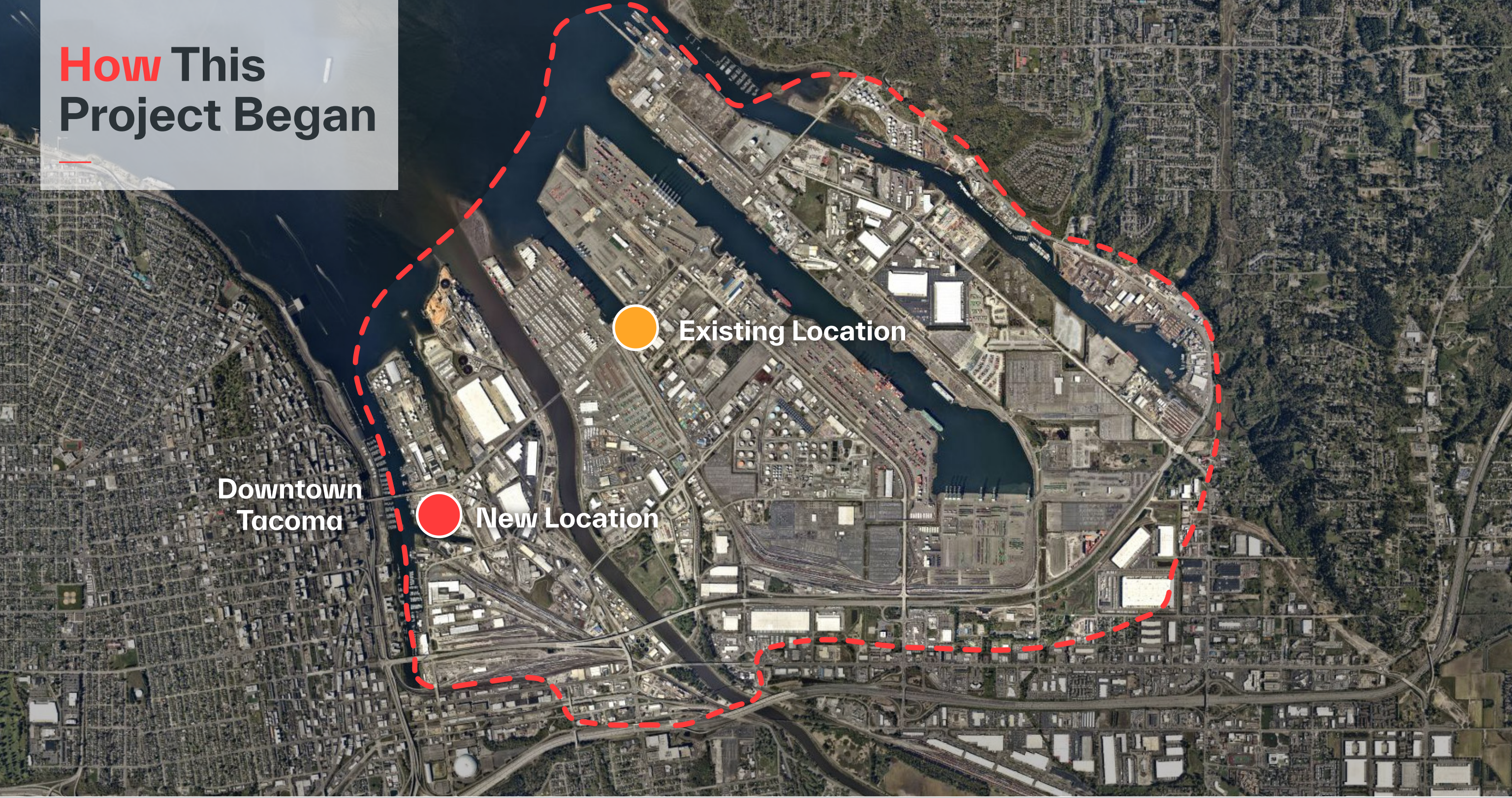
Economic Vitality EV-4

Partner with regional organizations to facilitate career development and business growth in Pierce County.

Environmental Leadership EL-1

Remediate contaminated port properties in a manner that ensures protection of human health and the environment while enabling economic development.

How This Project Began



Downtown Tacoma



Existing Location



New Location

Integration of Design-Build Team

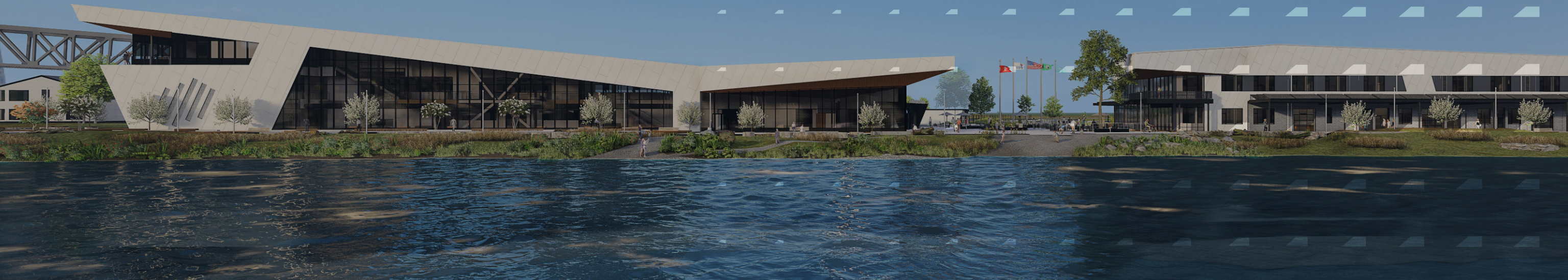
A few of the benefits...

- 01 Schedule
- 02 Mitigating Site Risks
- 03 Phased Permitting & Construction
- 04 Managing 2 Clients, 2 Budgets, Multiple Contracts



03

Design
Overview

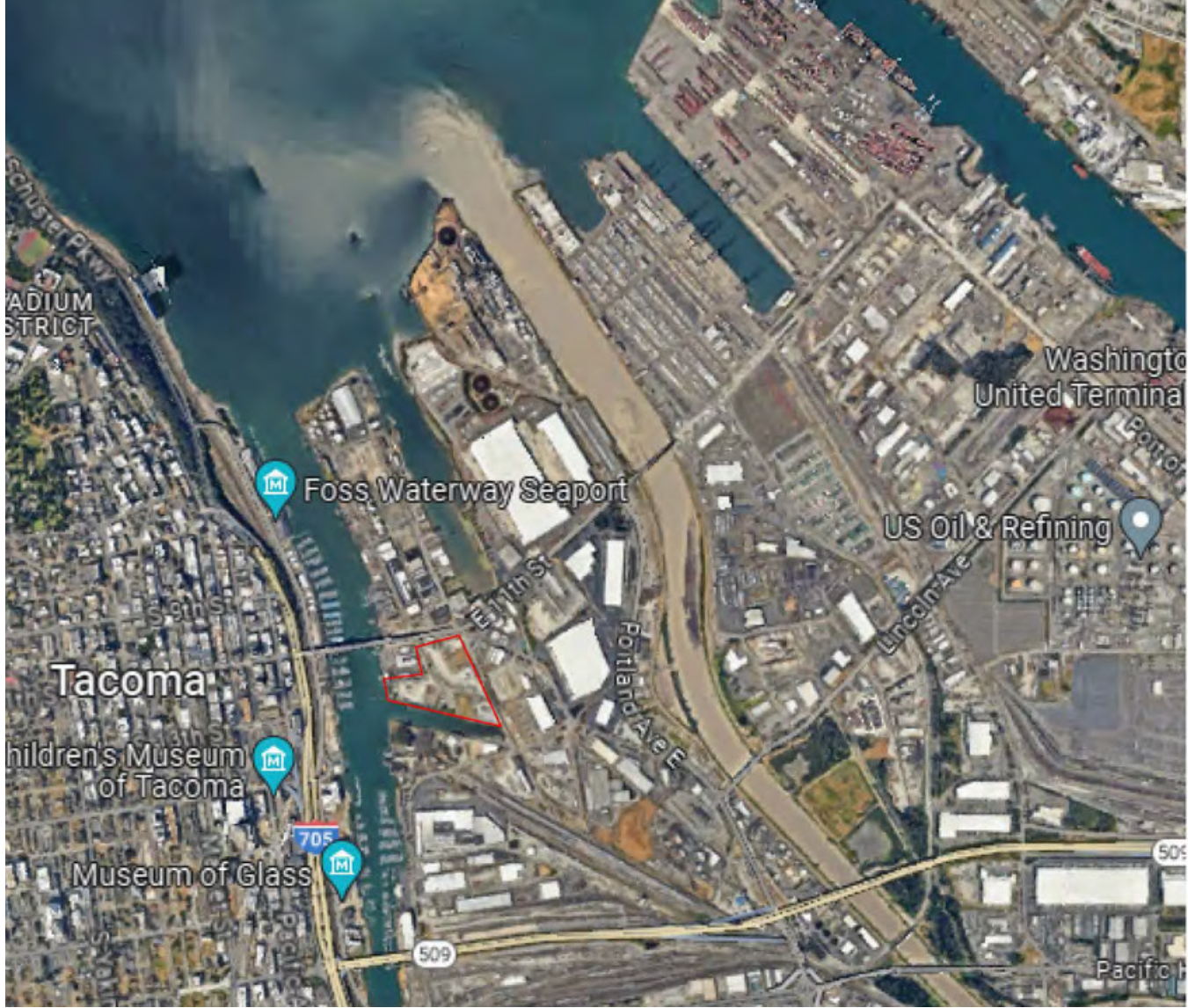


Design Process

- 01 Project Type Research
- 02 Industry Input
- 03 Community Input
- 04 Historical Site Research



Historical & Cultural Significance



Site Constraints

- Zoning constraints
- Contaminated soils
- Cultural Artifacts
- Required ground improvements
- Railroad bifurcates site
- Limited site access
- Shoreline restoration
- Shoreline and in-water permitting
- Keeping Development out of the Boot



Site

Thea Foss
Waterway

Wheeler Osgood
Waterway

Future
Phase



Project
Introduction

Successful
Partnerships

Design
Overview

Future
Thinking

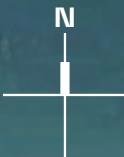
Q & A



Port of Tacoma
Administrative Building

Maritime 253
Skills Center

Wheeler Osgood
Waterway





Public Plaza
connecting Maritime
Skills Center & Port
Business Center

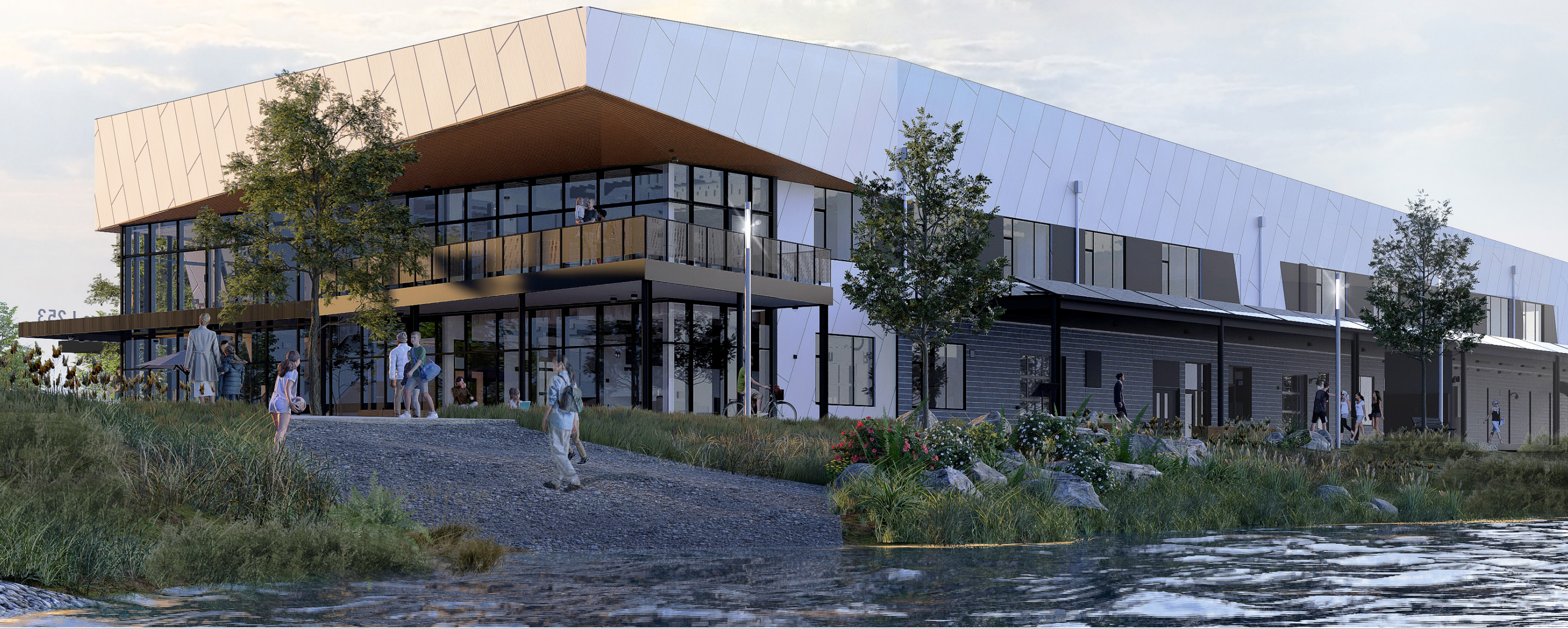


Public waterfront
esplanade along
Wheeler Osgood &
Thea Foss waterways

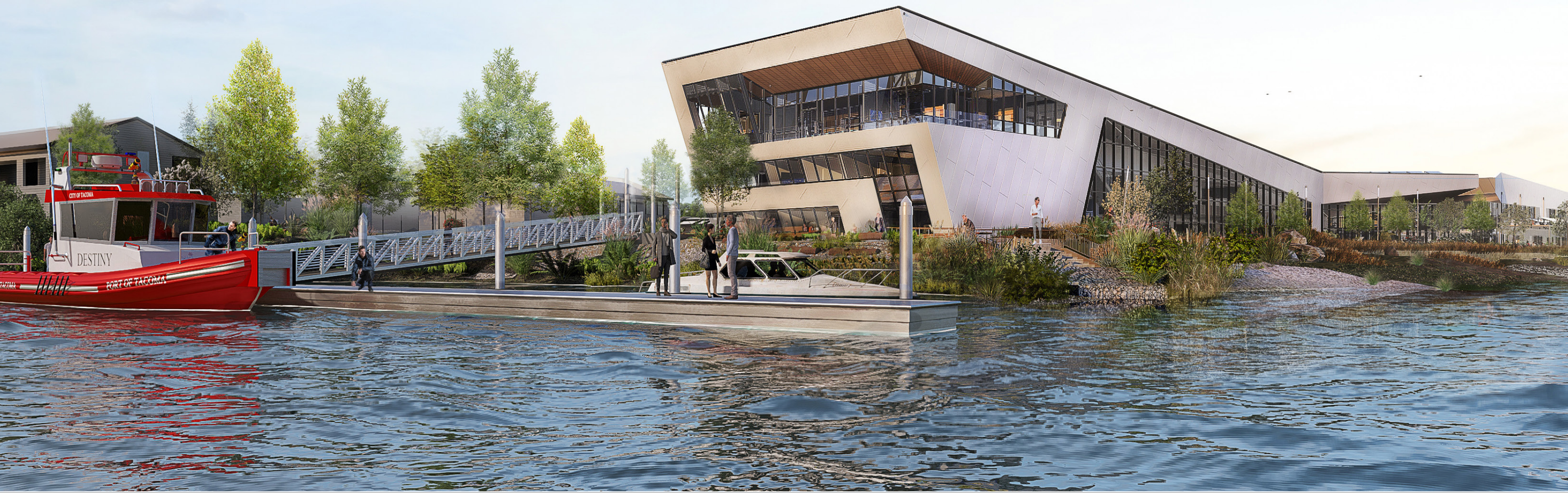
Shoreline habitat
restoration



—
Pebbled beach
water access



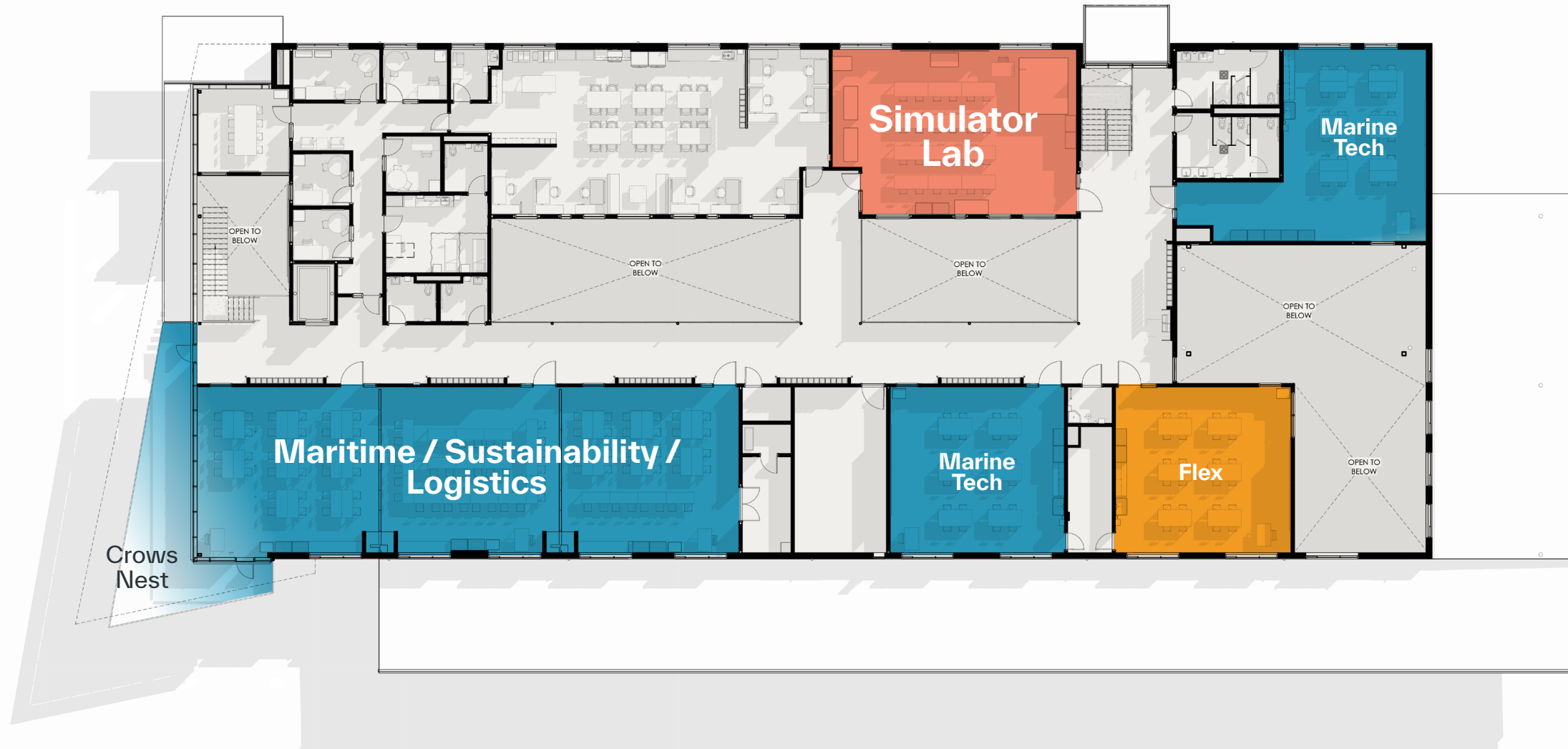
Pier dock with
water access for
larger vessels



First Floor



Second Floor





Skills Center
entry with visual
connections to
plaza & waterfront

—
Mechatronics lab
with views to/from
the plaza & esplanade



—
Marine Tech Lab
connects to the
Multipurpose room
and Esplanade



Main floor common work area opens to surrounding labs & classrooms



Second floor balcony overlooks work space below

Visibility to/from the classrooms & between floors

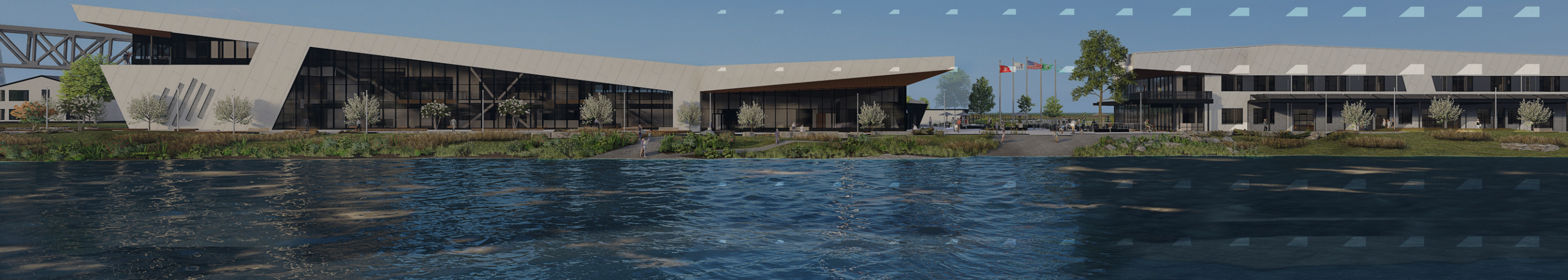
Ample daylighting from skylights



Outdoor canopy
extends working
& learning areas

04

Future
Thinking



Growth & Scaling



Follow the Progress



Port of
Tacoma



Tacoma
Public
Schools



TCF
Architecture

TACOMA
PUBLIC SCHOOLS
EVERY STUDENT. EVERY DAY.

Port of
Tacoma

BNB
BNBuilders

Questions?

