



SPACE FOR PLAY: UNIQUE APPROACHES TO SUPPORT ACTIVE SPACE IN EDUCATIONAL ENVIRONMENTS



Vinita Sidhu
Principal, PLA, ASLA

SiteWorkshop
LANDSCAPE ARCHITECTURE



Charlie Bucheit
Associate, AIA

bassetti
architects



WHY IS PLAY IMPORTANT?



MORNING STRETCH





WHAT IS PLAY?



PLAY IS COGNITIVE DEVELOPMENT



PLAY IS MOVEMENT



PLAY IS CREATIVE THINKING



PLAY IS AEROBIC EXERCISE



PLAY IS INCLUSIVE



PLAY IS ENGAGED LEARNING



WHAT IS NATURE-BASED PLAY?



WHY IS NATURE IMPORTANT?



ATTENTION RESTORATION THEORY (ART)



HEALTH BENEFITS OF NATURE



NATURE + PLAY

A group of people are participating in a physical activity in a large, well-lit room. They are standing on mats of various colors (green, blue, orange, purple) and have their arms extended horizontally. The room has a high ceiling with recessed lighting and large windows in the background. A blue text box is overlaid on the right side of the image.

BRAIN BREAK

What was your first thought / image when discussing play?

Has that thought changed / expanded with our proposals?



ELEMENTS OF PLAY SPACES



+ GATE / THRESHOLD

+ YARD / COMMONS

+ PATHWAY / INCLINE / STEPS

+ PORCH / CAVE

+ FOREST / GROVE

+ MEADOW / FIELD

+ RIVER / STREAM

+ BRIDGE / DECK

+ PROMINENCE / TREE HOUSE

+ AMPHITHEATER / FIRE PIT



GATE / THRESHOLD



YARD / COMMONS

PATHWAY / INCLINE / STEPS





PORCH / CAVE

GROVE





MEADOW / FIELD

RIVER / STREAM / POND





BRIDGE / DECK

PROMINENCE / TREE HOUSE





A group of people, including children and adults, are participating in a physical activity in a large, well-lit room. They are standing on a series of colored mats (green, blue, orange, blue, purple) laid out on the floor. Each person has one foot on a mat and their arms are extended horizontally to the sides, maintaining a balance. The room has a high ceiling with recessed lighting and large windows in the background. A blue text box is overlaid on the right side of the image.

BRAIN BREAK

What was your favorite element of play from your education?

Can you place in one the elements we looked at previously?

CASE STUDY ST. THOMAS SCHOOL



OVERLAKE GOLF
AND COUNTRY CLUB
MAINTENANCE YARD

ST. THOMAS SCHOOL –
PERFORMING ARTS AND
GYMNASIUM BUILDING

ST. THOMAS SCHOOL

ST. THOMAS
EPISCOPAL CHURCH

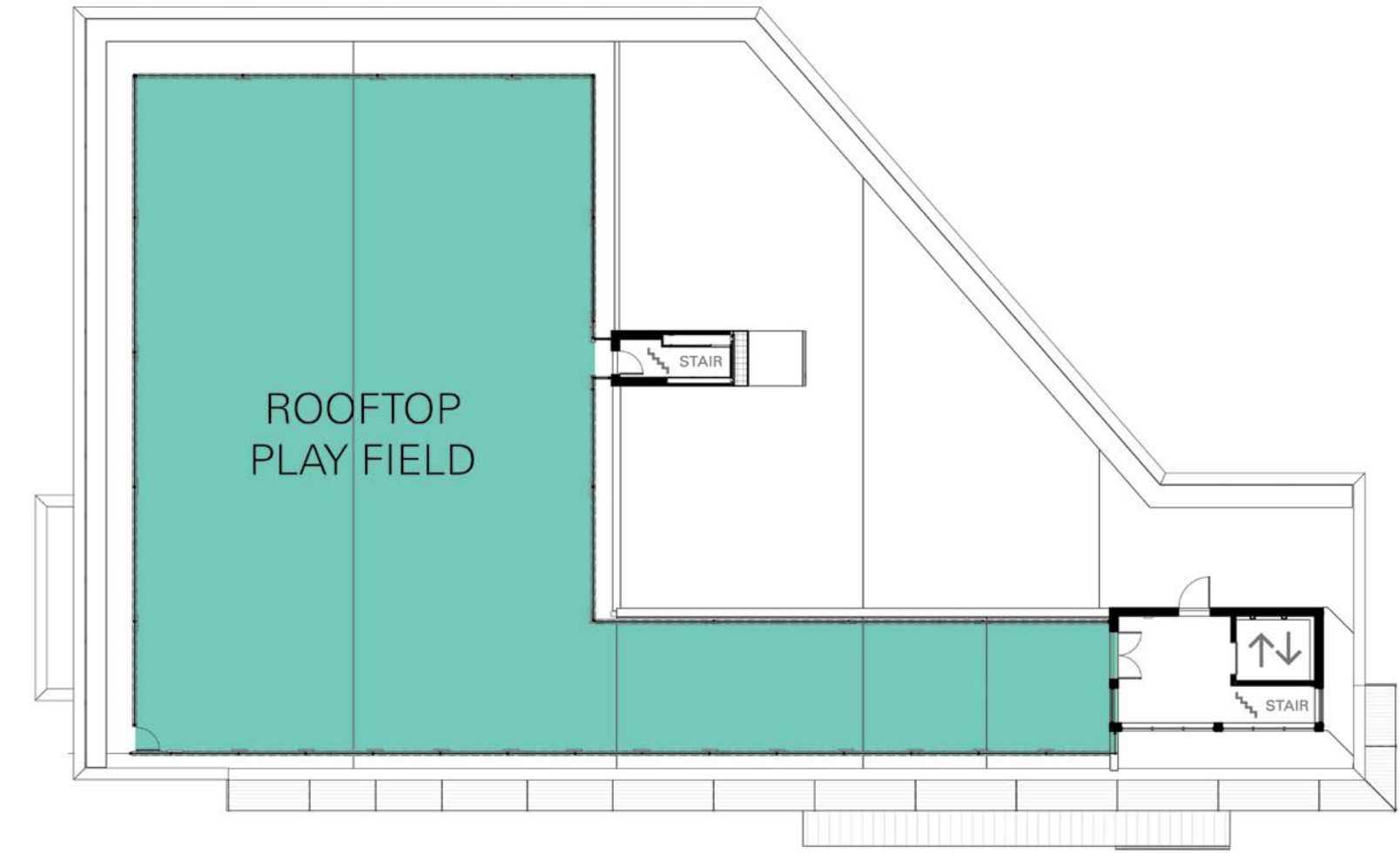










FIRST FLOOR



SECOND FLOOR



THIRD FLOOR

- | | | | | | |
|---|-----------|---|----------------------|---|---------|
|  | ARTS |  | PHYSICAL EDUCATION |  | |
|  | SPECIALTY |  | ALL-GENDER BATHROOMS |  | STORAGE |















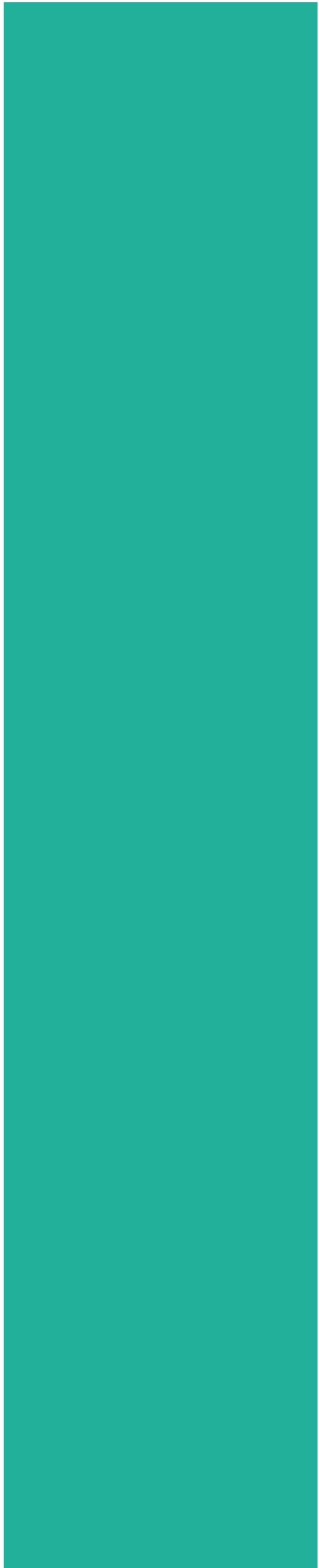
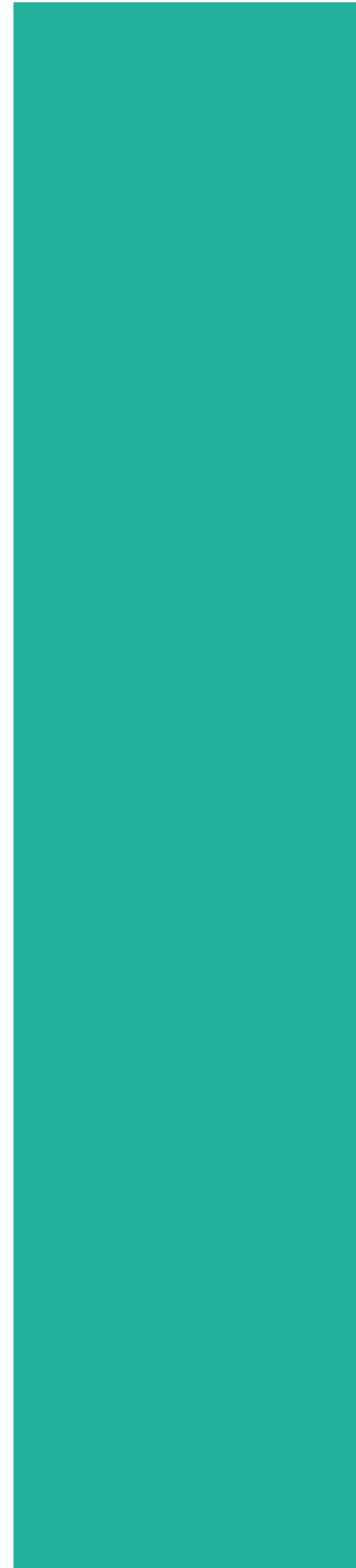




CASE STUDY MOUNTLAKE TERRACE ELEMENTARY SCHOOL









PLAYFUL ARRIVAL



UTILIZING TOPOGRAPHY



NATURE + PLAY AREAS



DISCOVERIES



THANKYOU.





REFERENCES

- + Healthy Brain, Happy Life, Wendy Suzuki
- + Extended Mind: Power of Thinking Outside the Brain, Anne Murphy Paul
- + John Medina, Brain Rules
- + Last Child In The Woods, Richard Louv