

PLANNING FOR THE UNKNOWN

DESIGNING FOR CURRICULUM GOALS
IN OUTDOOR LEARNING



INTEGRUS

A COLLABORATION OF YGH & INTEGRUS ARCHITECTURE



**ELLENSBURG
SCHOOL DISTRICT**



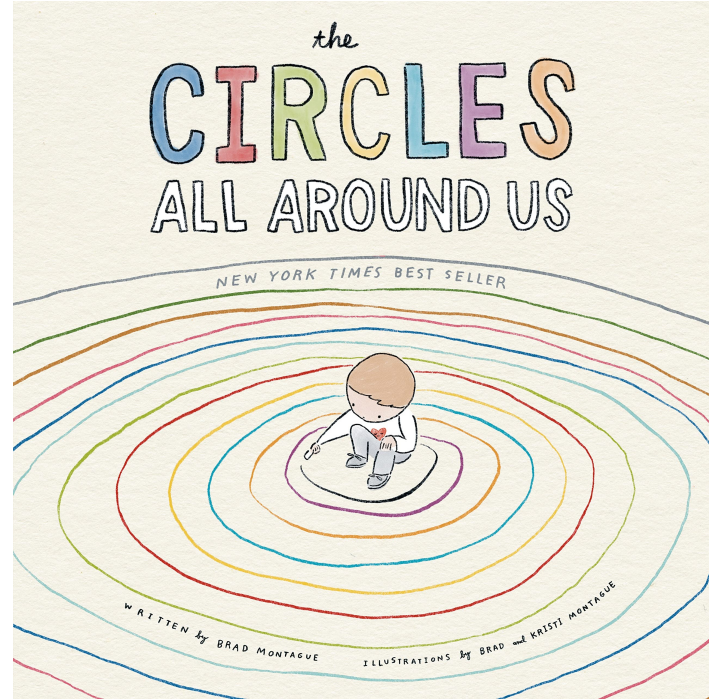
PEI PACIFIC
EDUCATION
INSTITUTE



LEARNING OBJECTIVES

1. Analyze current and future curriculum opportunities to drive project guiding principles.
2. Examine Site constraints and Opportunities to create valuable affordances for outdoor learning.
3. Advocate for project elements that allow for future flexibility.
4. Identify site features that enhance community and student well-being.

*"In the circles all around us everywhere
that we all go there's a difference we
can make and a love we can all show."*





Summer Literacy Camp



What if school always looked like this?

HEALTHY FOR BODY AND MIND

Spending time outdoors is shown to reduce stress, increase physical activity, improve circulation and heart health, increase focus and attention...and so much more!



ACADEMIC IMPROVEMENT

Students who spend time learning and exploring the outdoors during the school day have shown to have increased motivation and engagement in schoolwork. School attendance and personal responsibility for classwork also improve with increased outdoor exposure.

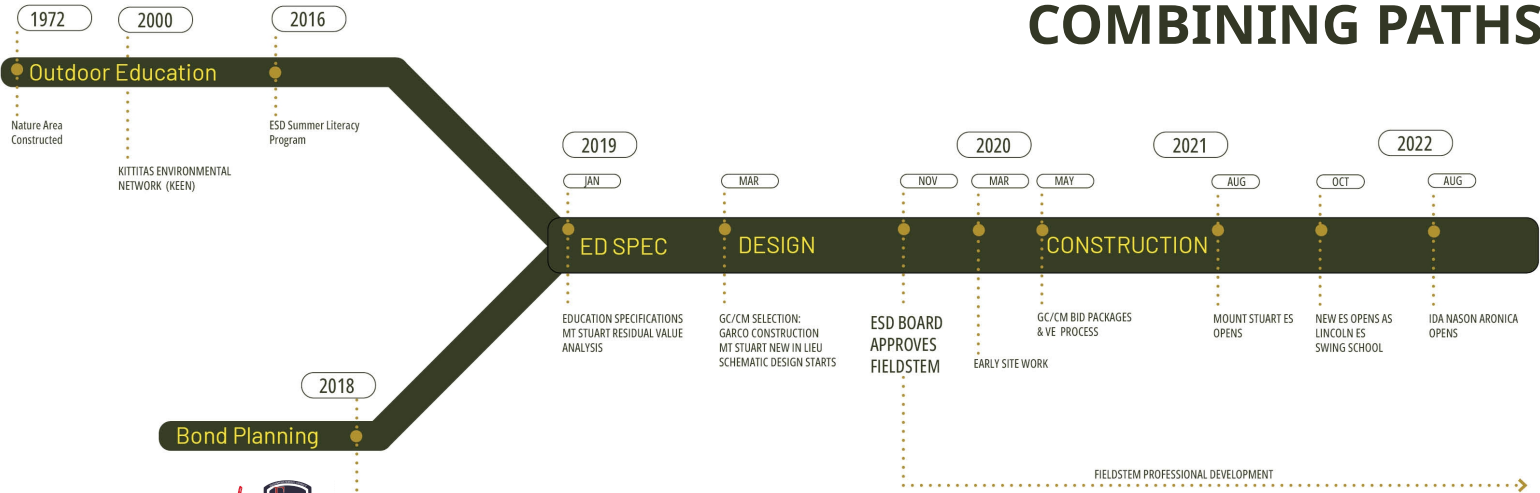
BUILDING COMMUNITY

Students learn social skills through collaborative learning experiences, and the outdoors provide abundant space for collaboration. Disruptive behaviors often decrease when students work outdoors as self-regulation improves with more exposure to natural elements.



Every season is outdoor learning season!

COMBINING PATHS



It's elementary!



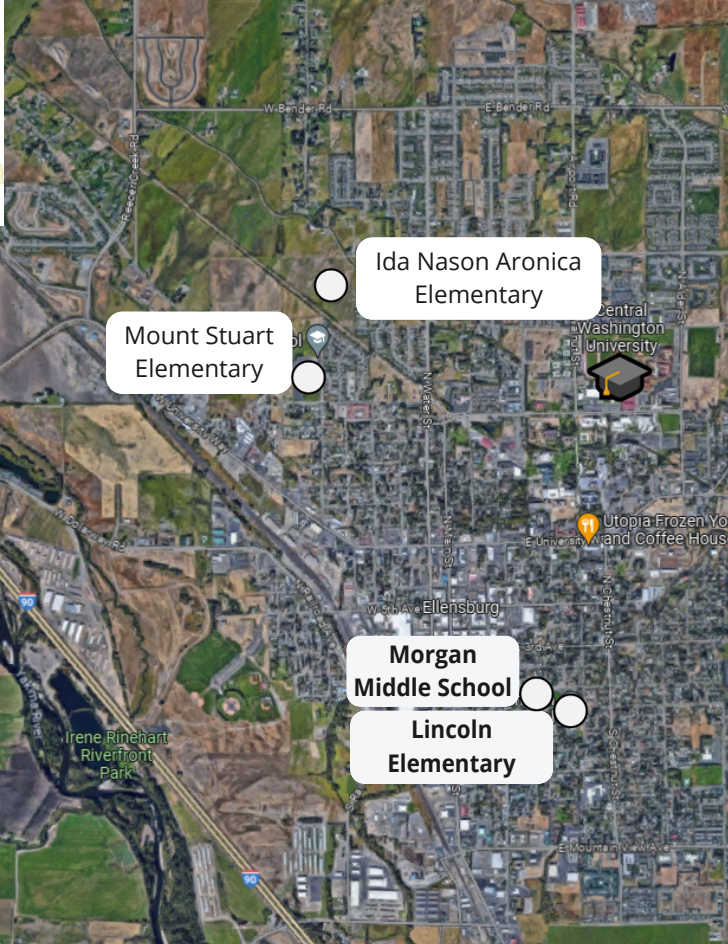
ESSENTIAL FACTS ABOUT THE 2018 BOND PROPOSAL

Our elementary schools are **overcrowded** and have significant **maintenance issues**. In fact, we serve about **475 students** more than our elementary schools were designed for... that's an entire school's worth of children being educated in portable classrooms!

To address this overcrowding and other important elementary school needs, the board **approved a recommendation** by a consensus-driven task force to place a capital bond on the **November 6, 2018** ballot.

ELEMENTARY BOND PROJECTS

NEW SCHOOL	EXPANSION & RENOVATION	MAINTENANCE & SAFETY
<ul style="list-style-type: none"> Build one 100-student elementary on district owned property near Mount Stuart Elementary Gain critical feedback from the community on the school's design throughout the planning phase 	<ul style="list-style-type: none"> Add classroom, gym and cafeteria space in Mount Stuart and Lincoln elementary schools, increasing capacity and improving energy and storage space to their normal use Eliminate the use of portable buildings, repairing learning time lost during fire drills and ensuring security 	<ul style="list-style-type: none"> Address maintenance and safety concerns at Mount Stuart and Lincoln, including parking and traffic improvements, secure entrances and EV/VE upgrades Make seismic improvements to 50+ buildings on-site Replace hanging roof at Mount Stuart



New Elementary Site



Mount Stuart Elementary Site



Engagement

ELLENSBURG SCHOOL DISTRICT POST BOND PLANNING

JANUARY 2019 | MEETING AGEND.

2019

LISTEN

COLLABORATE

CLARIFY

MEETING 1 January 30, 2019

Kickoff Session A1

- Introductions
- "Blink" Exercise
- Program Overview
- ESD Elementary School Curriculum Goals
- "Hopes & Fears" Exercise
- "Blink" Exercise Results & Discussion

Meeting Location: Morgan Middle School Library
Meeting Time: 6:00-8:00pm



MEETING 2 February 12, 2019

Curriculum, Goals & Vision Workshop A2

- How do Elementary Students Learn?
- Goals and Vision Exercise
- Education Facilities Trends & Directions (Part 1)
- Evaluating our Schools Exercise
- Case Studies: Best Practices throughout ESD, Region & World

Meeting Location: Morgan Middle School Library
Meeting Time: 6:00-8:00pm



MEETING 3 February 26, 2019

Program & Best Practices A3

- Educational Specifications Update
- Education Facilities Trends & Directions (Part 2)
- Evaluating our Schools
- Goals and Vision Boards Draft
- Review and compare: Program Spaces
- Case Studies: Best Practices Throughout the Region and World

Meeting Location: Morgan Middle School Library
Meeting Time: 6:00-8:00pm



MEETING 4 March 14, 2019

Environmental Workshop A4

- Goals & Vision Boards
- Tours Discussion
- Program Space List and Adjacencies Exercise
- Relationships Discussion
- Environmental Workshop

Meeting Location: Morgan Middle School Library
Meeting Time: 6:00-8:00pm



MEETING 5 March 26, 2019

Program Adjacencies & Relationships A5

- Pre-design Summary Update
- Adjacency Exercises
- Program Space List Update
- Curriculum/Strategic Plan Update

Meeting Location: Morgan Middle School Library
Meeting Time: 6:00-8:00pm



MEETING 6 April 11, 2019

New Elementary School A6

- New Elementary School Overview
- Goals
- Adjacency Exercises: Component Whole
- Program Space List Update
- Adjacency Exercises: Component Whole on Site

Meeting Location: Morgan Middle School Library
Meeting Time: 6:00-8:00pm



SCHOOL TOURS - MARCH 7, 2019

COMMUNITY OPEN HOUSE - APRIL 9, 2019

GUIDING PRINCIPLES:

- Honor the history of the Ellensburg community
- Honor the diversity of cultures and traditions in the region
- Connect to the outdoors & nature, capturing views of the surrounding natural environment



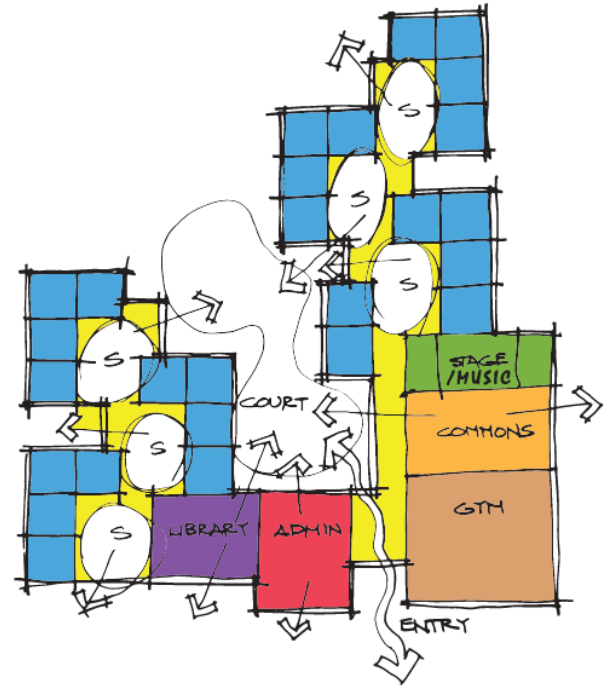
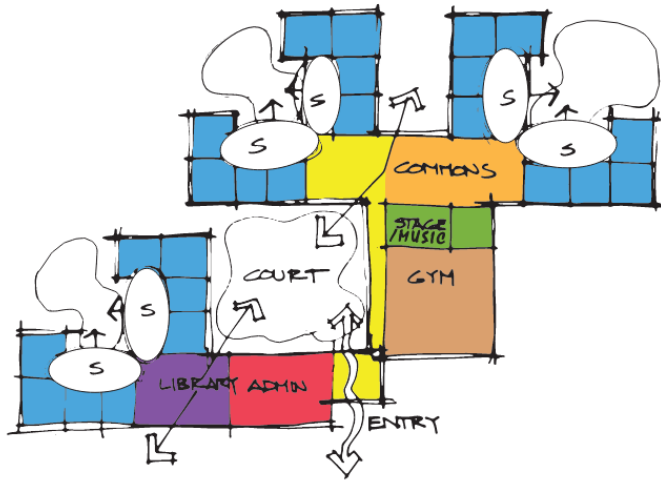
Outdoor Learning & Play:

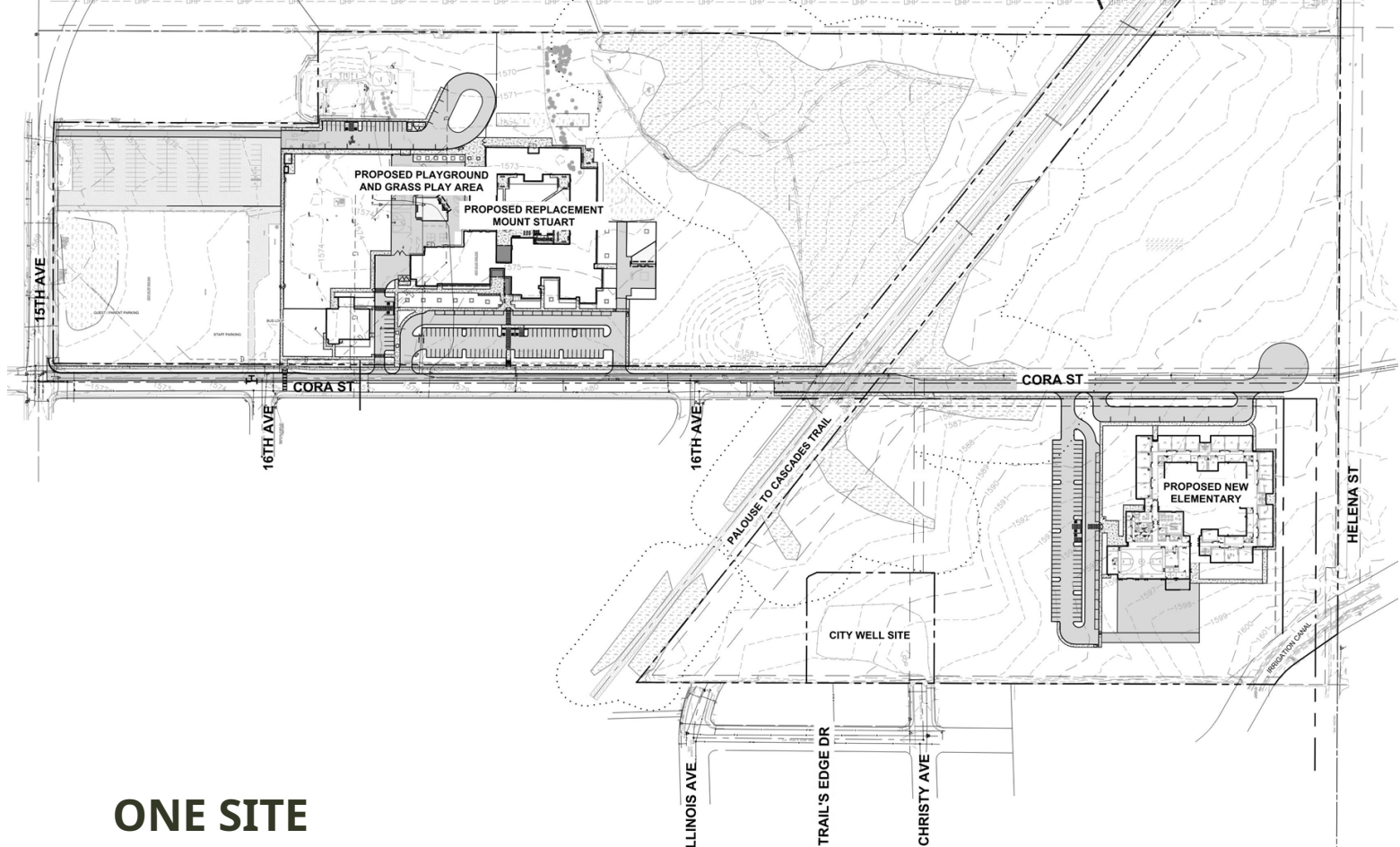
- **Include intentional outdoor spaces that honor learning and creativity**
- **Integrate elements of play throughout the site and the building**
- **Design outdoor spaces to be flexible with a variety of areas for exploration and discovery**
- **Foster a sense of stewardship for the environment**



Initial Diagrams

- Courtyard Organization
- Shared space connection to outdoors
- Views to nature and the surrounding natural environment





ONE SITE

COURTYARD CONNECTIONS

DEPARTMENT LEGEND

- General Classrooms
- Classroom Support
- Special Use Classrooms
- Performing Arts
- Administration
- Library
- Phys Ed
- Commons
- Kitchen/Support
- Circulation



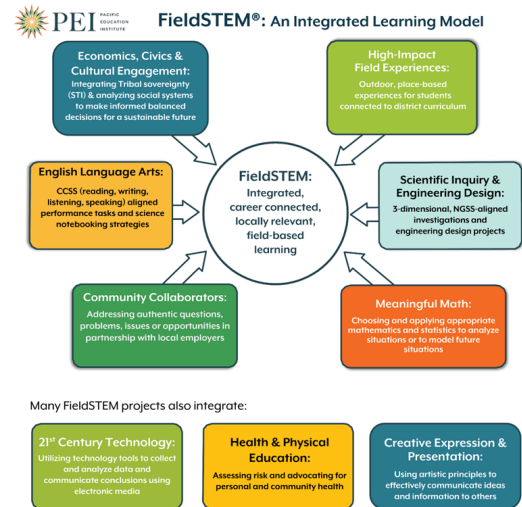






Ellensburg School District and FieldSTEM®

Working toward a day when all students in their role as learners have voice and are active productive scientists and citizens in their communities.



FieldSTEM® Support

Professional Learning | Resources | Field Experiences | Community Connections | Mentorship & Consultation



Wayfinding & Experiential Graphics





WHAT'S IN A NAME?

The Navaho



DR. WOOD BRIDGES was a prominent member of the Navaho Nation of the Navaho Indian Reservation and helped preserve the culture through his work in the 1930s and 40s.

His work in the 1930s and 40s was instrumental in the preservation of the Navaho language and culture. He was a member of the Navaho Nation and helped to establish the Navaho Museum in Window Rock, New Mexico.

His work in the 1930s and 40s was instrumental in the preservation of the Navaho language and culture. He was a member of the Navaho Nation and helped to establish the Navaho Museum in Window Rock, New Mexico.



NATIVE LEGACY



Ida Nason Aronica



Ida





WHAT'S IN A NAME?

Ida Nason-Aronica



IDA NASON-ARONICA was a prominent member of the Kittitas Band of the Yakima Indian Nation and helped preserve their cultural heritage during her 103-year life.

She was born in 1888 and raised near Coumiers as a Wenatchee Indian. She later settled in the Kittitas Valley and married John Giuseppe Nason, becoming part of the Kittitas band. After his death, she married Tony Aronica. The Nason and Aronica families still trace their ancestry to Chief Oso.

Her family chose to remain in the Kittitas Valley even as many other native people moved to reservations. Ida kept alive a wide range of knowledge and skill for living in harmony with the land, animals, and seasons. She passed on the values and traditions of Kittitas culture through storytelling and rituals throughout her life.



NATIVE LEGACY

Chief Oso-ki



CHIEF OSO was born in the late 1700s and led the Wenatchee Tribe as a warrior chief. His great power was the moon. He and his son Quashkin had many disputes with men settlers who arrived in the 1800s, forcing native people from their lands. In 1908 he was held captive after arriving to negotiate with Colonel George Wright at a U.S. Army camp. He was later sent as a prisoner to Fort Walla Walla and was killed while trying to escape.



A VALLEY TRADITION

Ellensburg Rodeo



Since 1923, the ELLensburg RODEO has been a pivotal piece in the history of the Kittitas Valley. The Ellensburg Rodeo was organized from volunteers consisting of ranchers, farmers, Indians and community-minded citizens working together to establish a traveling rodeo far away of the wild province that's common. The same volunteers still still form the life of today's volunteers as the Ellensburg Rodeo has transformed into one of the top professional rodeos. It is the long-standing traditions of Labor Day Weekend that make the Ellensburg Rodeo a unique community event. One continued tradition is the friendship between the Ellensburg Nation and the Yakima Indian Nation. Each rodeo performance starts with the tradition of the Yakima Indian Nation descending horseback down the mountains covered to honor the tradition of many generations venturing into Kittitas Valley.



Celebrating Cultures



- YAKAMA NATION
- SWANS

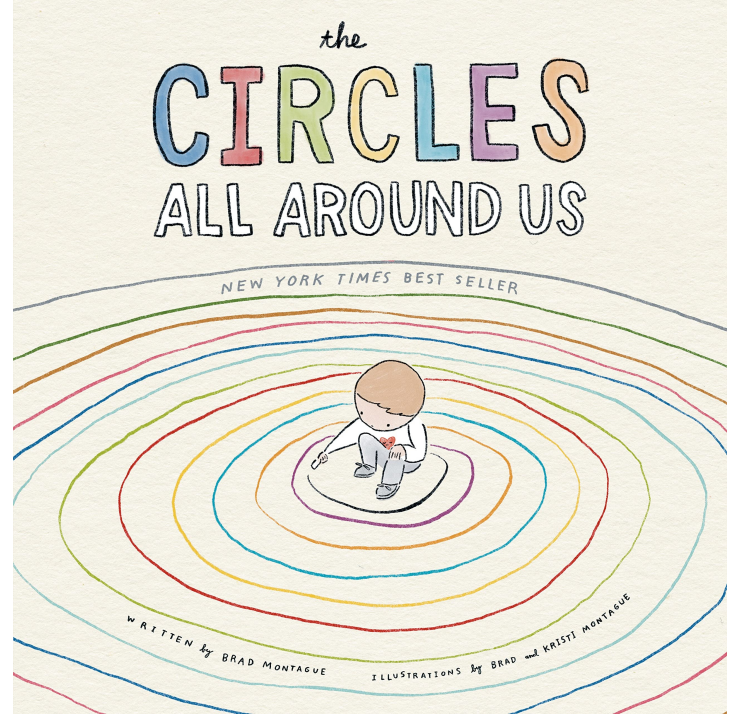


SUNFLOWER FESTIVAL

- SEEDS OF THE FUTURE
- COMMUNITY PARTNERS
- FULL CIRCLE



"As our circles grow and grow and we watch them wonder-eyed, remember the first circle started with just the love you hold inside."



Thank You!

