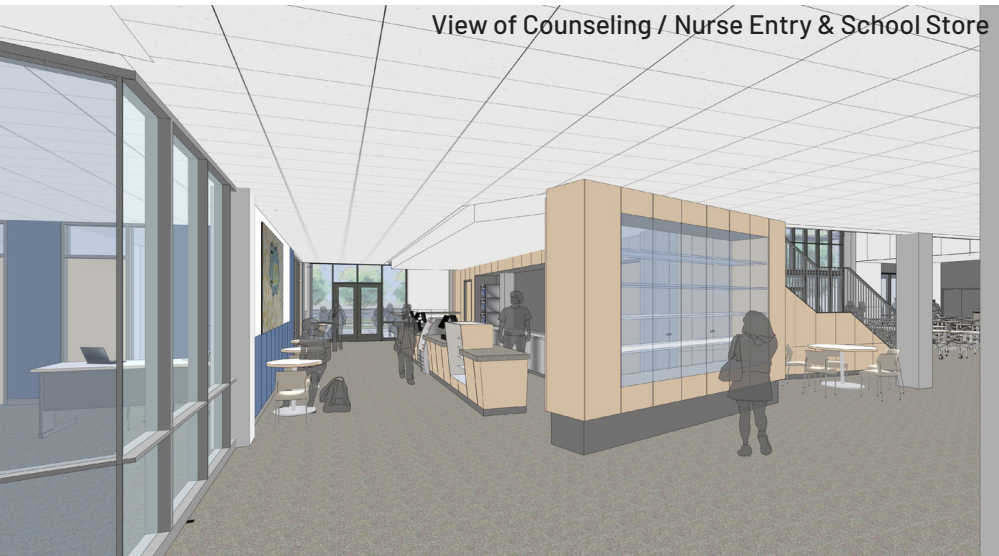
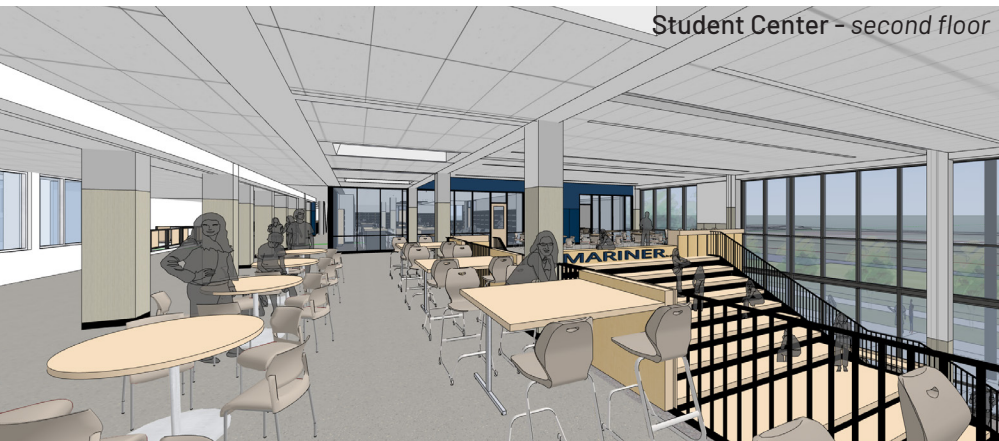




Aerial view of addition



View of Counseling / Nurse Entry & School Store



Student Center - second floor

Grades Housed: 9th-12th
Opened: Fall 2024
Addition Area: 26,500 sf

Owner: Mukilteo School District
Owners Rep: Parametrix

GCCM Contractor: Spee West Construction
Architect: INTEGRUS
Structural Engineer: INTEGRUS
Civil Engineer: Jacobson Consulting Eng.
Landscape Architect: Osborn Consulting
Mechanical Engineer: Hargis Engineers
Electrical Engineer: Hargis Engineers
Geotechnical: Associated Earth Sciences
Acoustical: Yantis Acoustics
Cost Estimating: RC Cost Group
Food Service: Stafford Design Group
Door Hardware: Gordon Adams Consulting



Mariner High School Addition

Mukilteo School District



Mukilteo
 School District

INTEGRUS
 A COLLABORATION OF YGH & INTEGRUS ARCHITECTURE

117 South Main Street, Suite 100
 Seattle, WA 98104
 206.628.3137
 www.integrusarch.com

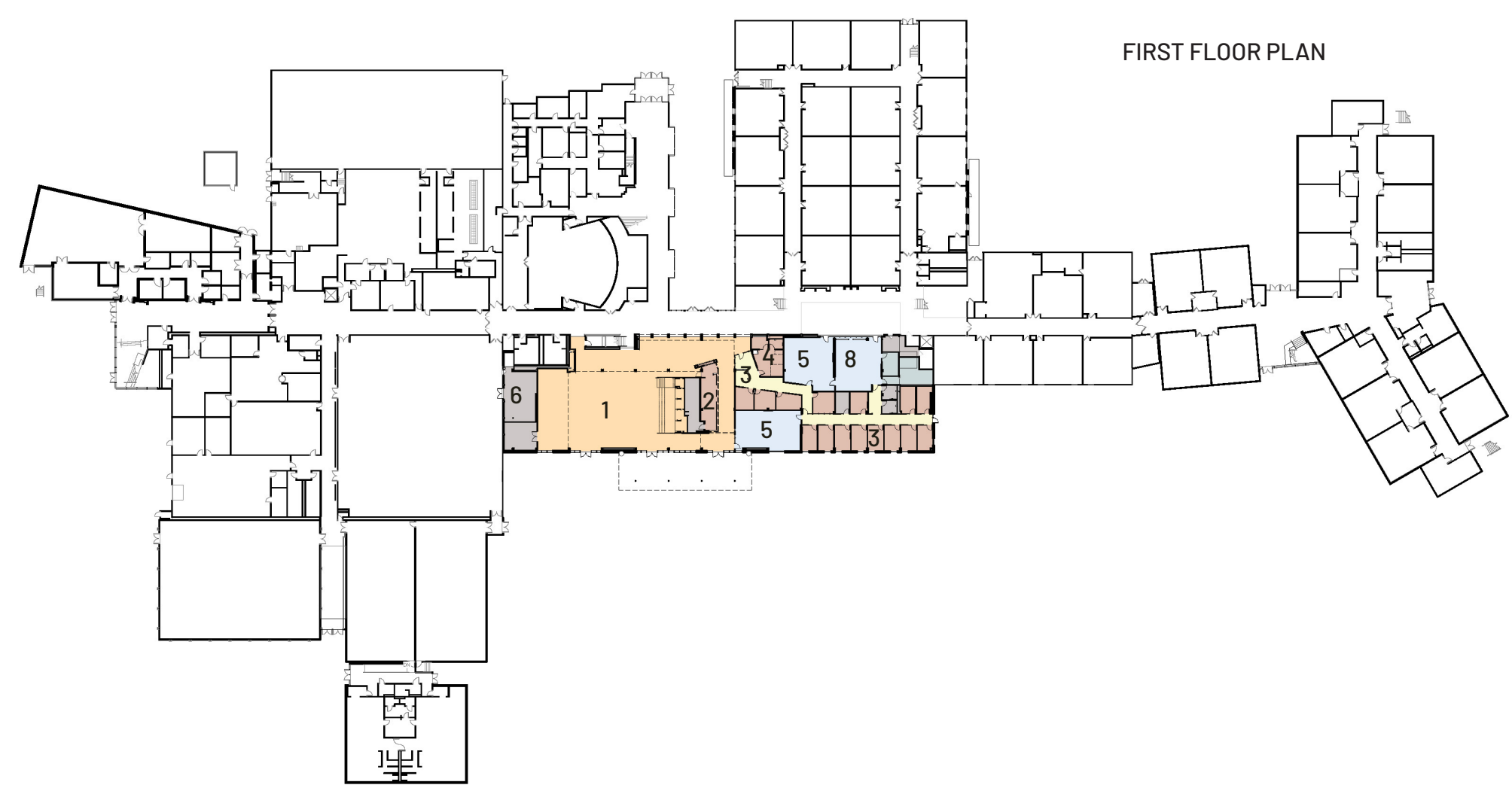
Mariner High School is pleased to introduce its newly modernized campus, made possible by the 2020 Capital Bond. Originally built in 1968 with major additions over the years, overarching design goals are to relieve overcrowding in the public areas, significantly expand seating capacity for lunch, and provide space for students after hours. The transformation marks a significant advancement in creating a learning environment that meets the evolving needs of the vibrant and diverse Mariner community. The building design compliments and unifies the existing campus and its various additions. Durable and low maintenance exterior materials include brick veneer, metal siding and insulated glazing, with a color palette selected to blend with existing building materials.

Central to this modernization is a new two-story student center that serves as the heart of the school. This bright, open space offers a welcoming environment fostering creativity, collaboration, and 21st-century learning. Designed with flexibility in mind, it features a variety of spaces where students can study, socialize, and relax, both indoors and outdoors. Movement and flow are prioritized, with reduced congestion in hallways making it easier for students to navigate the school.

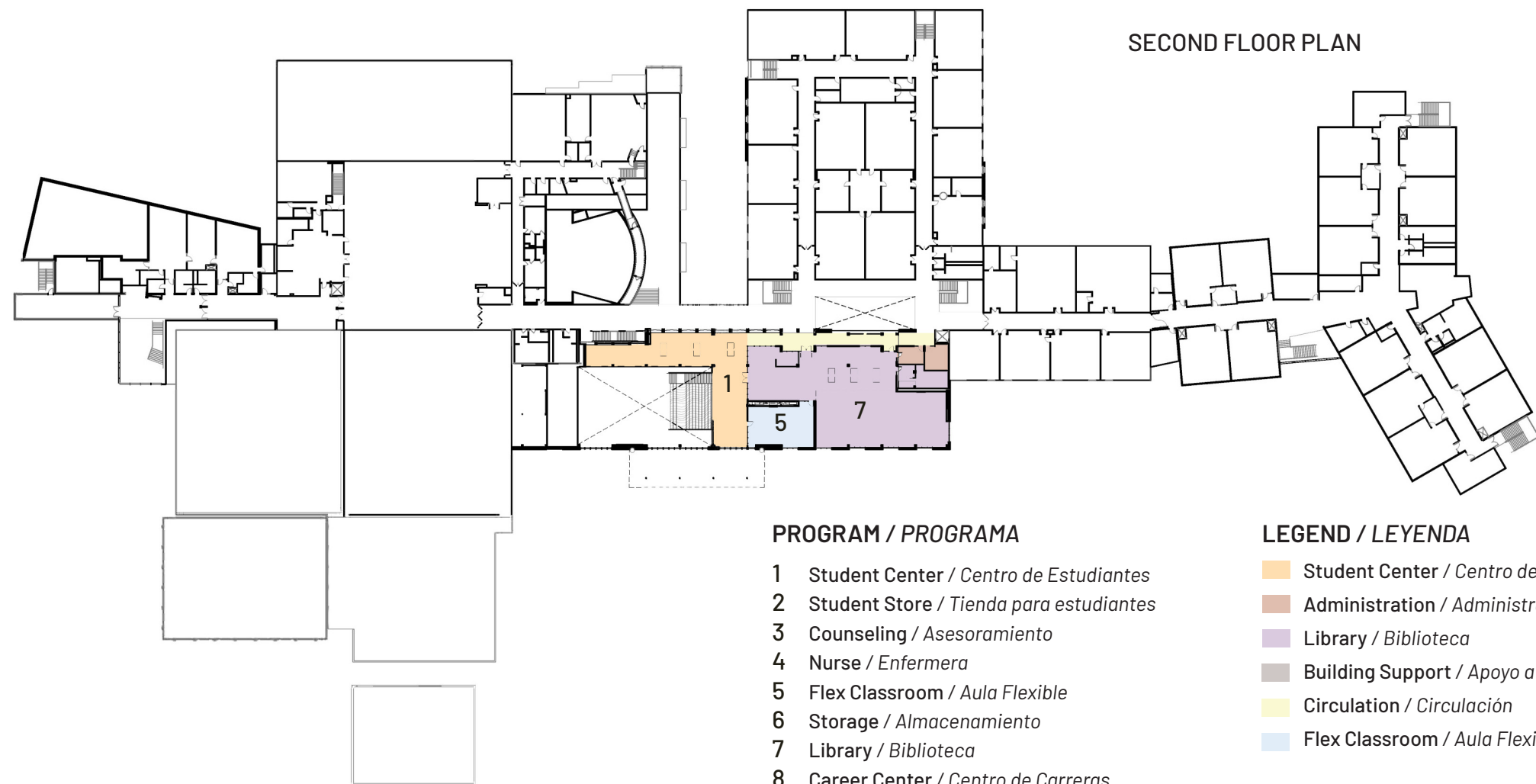
New spaces include a new student center, library, counseling and career centers. The student center is a multi-use space with an atrium stair accommodating a large variety of student activities. A new plaza adjacent to the commons connects interior and exterior spaces, bringing daylight into the center of the school. The library was rebuilt on the second floor immediately adjacent to the student center, while an expanded career center and counseling area is located directly below the library. Three classroom-sized rooms on both floors serve as flexible spaces to serve many support functions.

These additions not only expand the school's capacity but also provide comfortable and inclusive spaces where students can express themselves, connect with others, and prepare for their futures. Additionally, a new school-wide fire alarm system was installed, along with new turf for existing infields. Interior materials include polished concrete floors on the first floor and resilient tile on the second floor.

Mariner High School is ready to welcome students back in fall 2024 to a campus that blends its rich history with a fresh, modern outlook. The new spaces are designed to support both academic and community activities, making Mariner a true center for learning and community.



FIRST FLOOR PLAN



SECOND FLOOR PLAN

PROGRAM / PROGRAMA

- 1 Student Center / Centro de Estudiantes
- 2 Student Store / Tienda para estudiantes
- 3 Counseling / Asesoramiento
- 4 Nurse / Enfermera
- 5 Flex Classroom / Aula Flexible
- 6 Storage / Almacenamiento
- 7 Library / Biblioteca
- 8 Career Center / Centro de Carreras

LEGEND / LEYENDA

- Student Center / Centro de Estudiantes
- Administration / Administración
- Library / Biblioteca
- Building Support / Apoyo a la construcción
- Circulation / Circulación
- Flex Classroom / Aula Flexible