

Arlington High School

Arlington School District

Arlington, Washington

PROJECT NARRATIVE

The recently completed \$35,763,700 Arlington High School (\$32,183,890 building, \$3,579,810 site construction cost) is located on a site south of downtown Arlington and replaced the original high school. The new 224,000 s.f. building creates a comprehensive facility designed to house 1,600 students, with core spaces sized to allow the school to be enlarged to accommodate 2,000 students, and includes a 700-seat Performing Arts Center. Site design also included a new athletic complex with game and practice fields and a 2,000-seat grandstand.

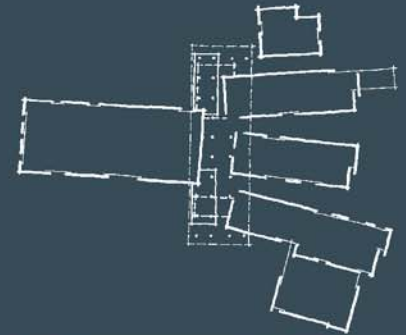
DESIGN CONCEPT

The design is a metaphor for the changing state of the Arlington community. Two underlying forces are coming together and creating a new culture for Arlington: "Familiar Arlington" references to rural settings, small town living, the history of the local agriculture and logging industries. "Progressive Arlington" references the unique suburbia that is emerging between rural and small town living, and new manufacturing and hi-tech industries. The building assumes the characters of these forces, and as with the community, what is interesting is found in the dichotomy where the two expressions come together.

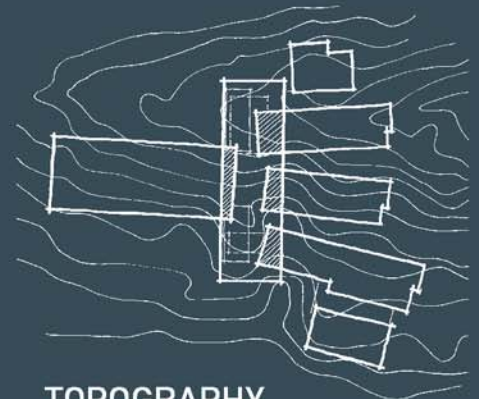
Familiar Arlington The community spaces in the school - Administration, Student Services, Library, Career Center and the Commons, are expressed in form and materials inspired by the historic character of rural and agricultural structures. They remind the school community of the ties to the historic culture of the greater community. These spaces are collected and sheltered beneath a single large roof reminiscent of many such pole barns and shelters found in Arlington's rural farmland. Spaces beneath are smaller in scale and individually expressed as corrugated metal boxes stacked and stored under this shelter. The space left in the middle becomes the center of the school community, the Commons. This roof serves as the central organizing element and provides a clear entry statement. Its structure is light and open, where enclosed it is enclosed by glass.

Progressive Arlington The greater community is growing with new development and industry. As with the students, the community is exploring and learning how to live in this changing, progressive environment. Learning spaces in the school provide the places for students to explore. These spaces are organized in three academic houses and a Fitness/Wellness house. The unique nature of each house and what has been explored is expressed where the enclosing skin of masonry is pulled back or punctured to reveal the activities within. The house entries are where displays and color express the nature of what is unique to the learning experience of each house. Through the masonry, one catches glimpses into the unique learning spaces that create the character of each house.

Where Familiar and Progressive meet is under the roof of the shelter. The masonry forms tuck under the floating roof and, along with the corrugated community spaces, begin to define the entry and enclose the Commons. It is the uniqueness of both the Familiar and the Progressive that give the space, and as such the school community, its character.



FORMAL LANGUAGE



TOPOGRAPHY



CIRCULATION