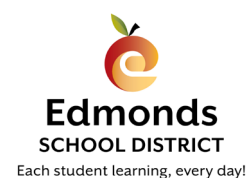




**Building Area** 128,500 SF  
**Grades Housed** 7 & 8  
**Student Capacity** 800  
**Completion Date** Fall 2016  
**Owner** Edmonds School District  
**Architect** Integrus Architecture  
**Structural** Integrus Architecture  
**Civil** AHBL Inc.  
**Landscape** Weisman Design Group Inc.  
**Mechanical** Metrix Engineers  
**Electrical** Travis, Fitzmaurice & Associates  
**Kitchen** Halliday Associates Inc.



# Alderwood Middle School

Edmonds School District



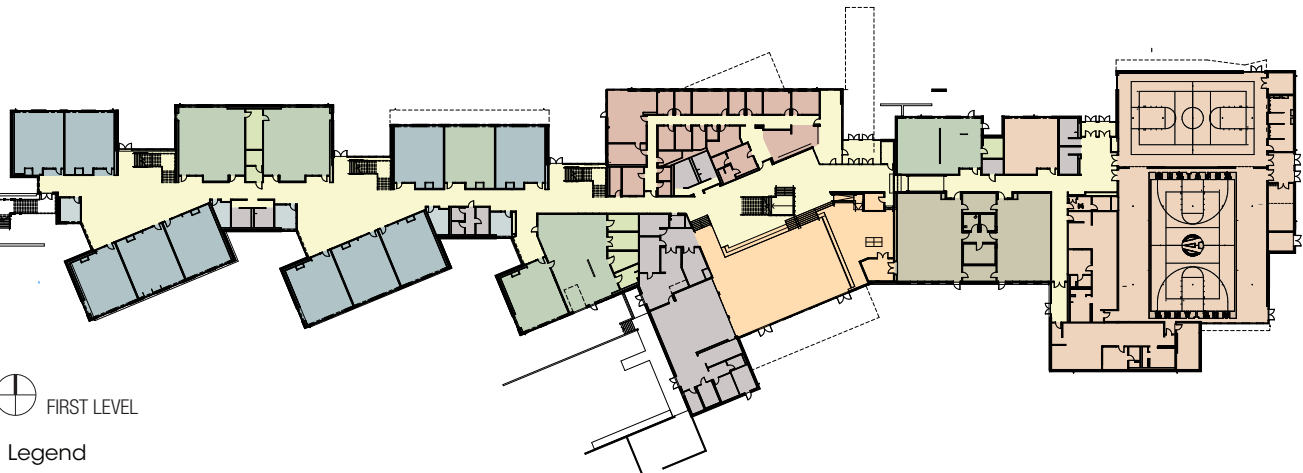
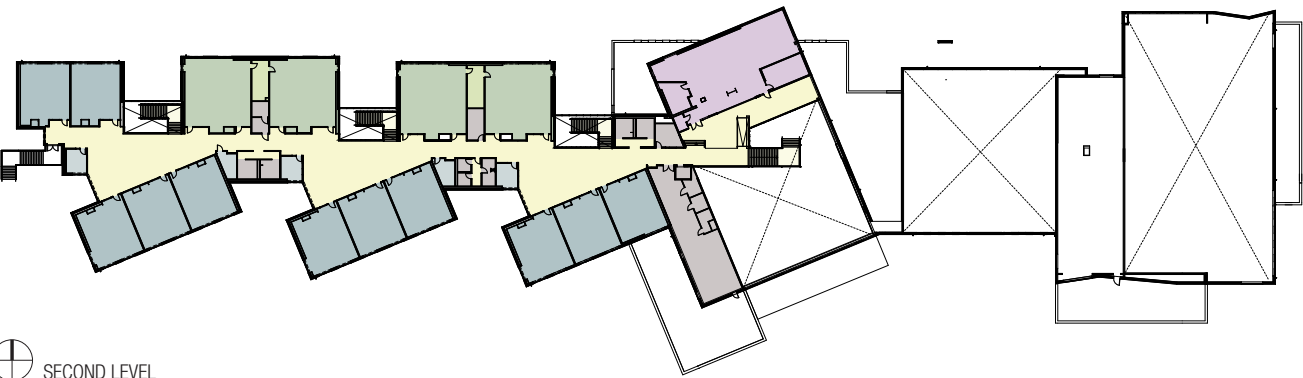
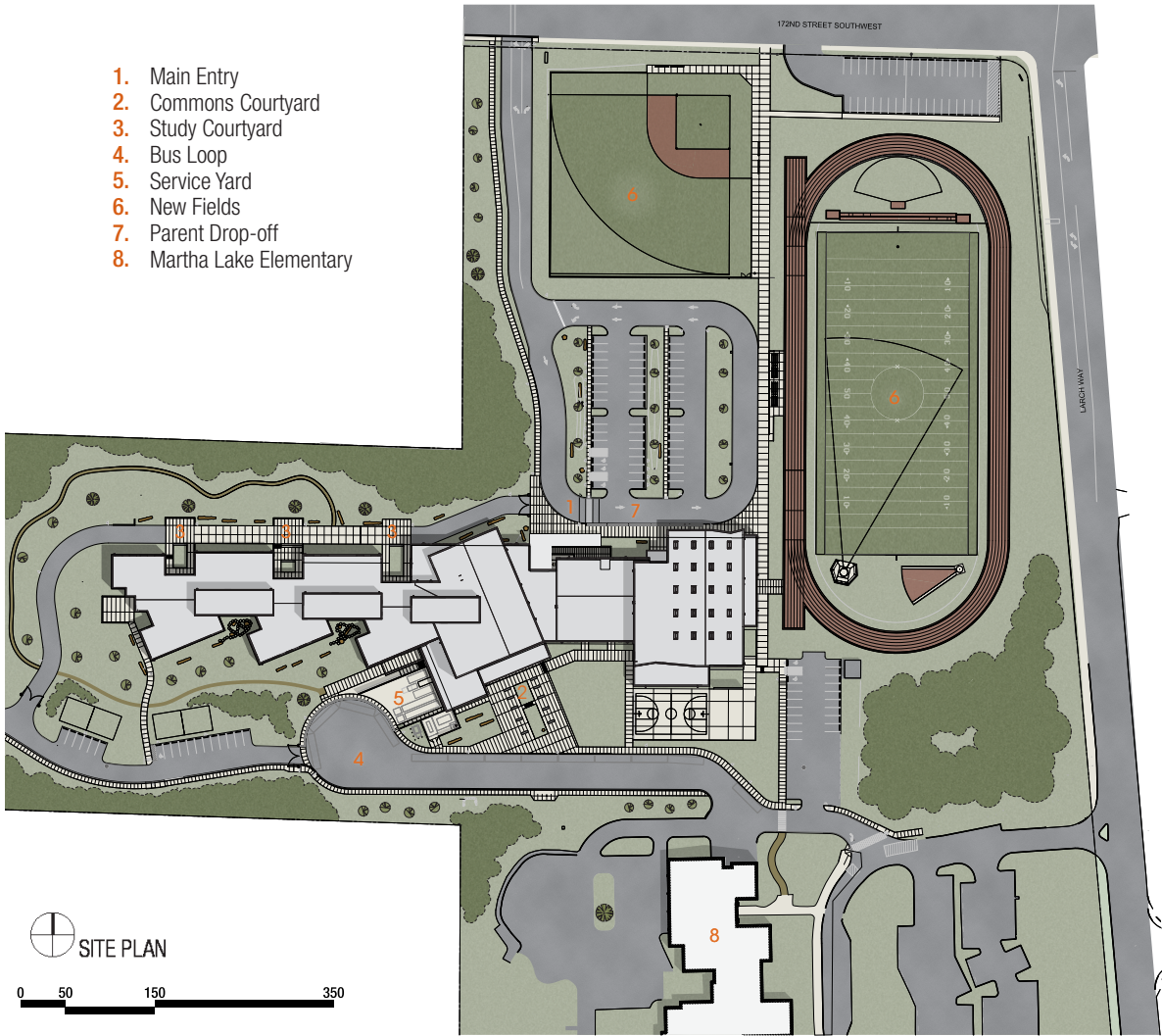


Design Goals

The Alderwood Middle School design concept, budget, and schedule were based on the District's recent project at Meadowdale Middle School. The new Alderwood facility is approximately 100,000 square feet with a two story main classroom building adjacent to a one story Gymnasium, Library, and Commons area. The project includes renovations of existing sports fields, site improvements for new sports fields, parking, bus and auto circulation, emergency vehicle access, neighborhood pedestrian connections and significant new storm water management facilities.

Locating the public areas of the new Alderwood Middle School in the center of the site preserves existing open space, wooded areas, and buffers to adjacent properties, while maintaining pedestrian connections. The Commons is a multi-functional social and learning space, including areas for eating, socializing, performing, and gathering. The relationship of the Library / Commons / Admin forms the "heart" of the school. Multi-use outdoor spaces flow seamlessly from the Commons. A formal performance setting within the Commons provides performing arts learning opportunities, while computer-based technology and hands-on material fabrication allow for innovative collaboration within the CTE department and with Science and Art instruction.

- 1. Main Entry
- 2. Commons Courtyard
- 3. Study Courtyard
- 4. Bus Loop
- 5. Service Yard
- 6. New Fields
- 7. Parent Drop-off
- 8. Martha Lake Elementary



- Legend
- General Classrooms
  - Classroom Support
  - Special Use Classroom
  - Science/Creative Spaces
  - Science Support
  - Fine & Performing Arts
  - Learning Resource Areas
  - Phys Ed
  - Commons
  - Service & Support Spaces
  - Administration & Student Services
  - Circulation

