



NAC



Enumclaw High School

Enumclaw, WA, USA

This project transforms an existing 1930s high school, consisting of numerous buildings constructed over subsequent decades, into a coherent campus. The addition consolidates and expands the core academic spaces into two wings connected by a third volume containing the career center, expansion of the cafeteria, and library/media center. Each classroom wing focuses on the two-story skylighted learning commons between them. The commons space extends to a central courtyard created by the wings, which captures a spectacular view of Mount Rainier—key to the school’s identity. Strategic interventions in the existing building complete the comprehensive improvements and program enhancements.

PROJECT INFORMATION & TEAM

Student Capacity:
1,600

Size:
184,212 SF (New and Renovation)

Occupancy:
Fall 2019

Site Size:
39 Acres

Architect:
NAC Architecture

Owner:
Enumclaw School District

Owner Representative:
Alliance Construction Management

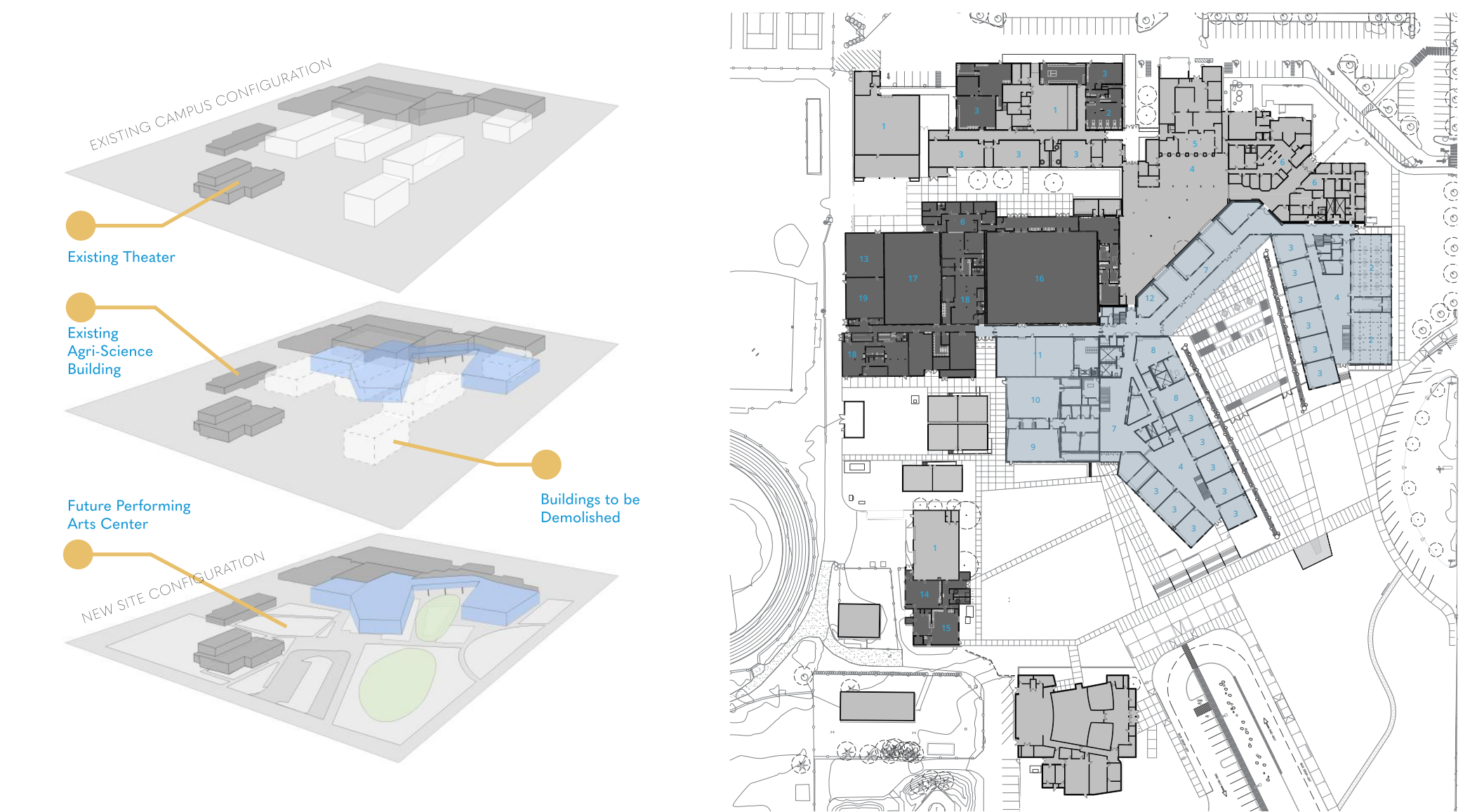
Civil/Structural Engineer:
Coughlin Porter Lundeen

Mechanical Engineer:
Hargis Engineers

Electrical Engineer:
NAC Engineering

Landscape Architect:
Weisman Design Group

General Contractor:
FORMA Construction



- Main Level Floor Plan
- 1. Shop
 - 2. Lab
 - 3. Classroom
 - 4. Commons
 - 5. Kitchen Service
 - 6. Admin
 - 7. Hallway
 - 8. Life Skill
 - 9. Choir
 - 10. Band
 - 11. Wrestling Room
 - 12. Resource
 - 13. Weight Room
 - 14. Med/Health
 - 15. Agriculture
 - 16. Gymnasium
 - 17. Court
 - 18. Lockers
 - 19. Aerobics

MATERIALS

- | | |
|--|---|
| Vinyl Windows:
Milgard Windows and Doors | Steel Wall Panels:
Morin |
| Aluminum Storefront:
EFCO Corporation | Aluminum Wall Panels:
Northclad Rainscreen Solutions |
| Interior Lighting:
Pinnacle Architectural Lighting | Roofing:
Prestone Building Products |
| Wood Panel Ceilings:
Geometrik | Overhead Coiling Doors:
Cornell Innovative Door Solutions |
| Acoustical Panel Ceilings:
USG | Carpet and Luxury Vinyl Tile Flooring:
Shaw Contract |
| Skylights:
Lacey Glass | Metal Lockers:
List Industries |
| Roller Shades:
MechoShade | |