

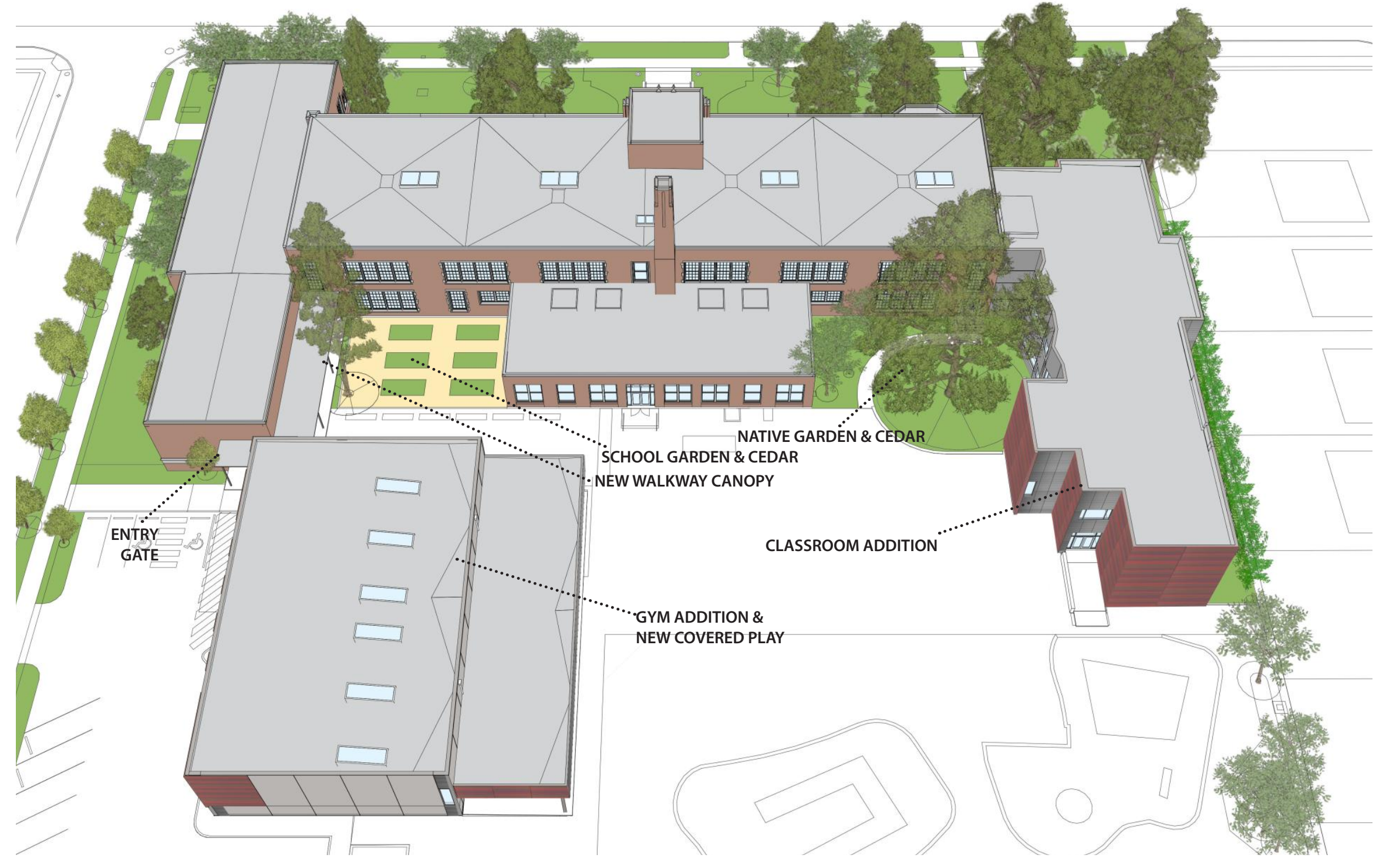
RENEWING COMMUNITY INFRASTRUCTURE

**Daniel Bagley Elementary School
Modernization and Addition**

Owner: Seattle Public Schools
Architect: Miller Hayashi Architects
Location: Seattle, WA
Occupancy: September 2020
Grades: K-5
Capacity: 500 students
Building Area: 62,000 sf
21,800 sf (new) & 40,200 sf (renovated)
Lot Size: 3.90 acres
Construction Cost: \$29,628,000

The Daniel Bagley Elementary School in Seattle's Green Lake neighborhood is a historic landmark structure originally designed by Floyd Naramore in 1930. The renovation of the historic structure and additions increases capacity and implements new energy efficient building systems, life safety improvements and accessibility upgrades.

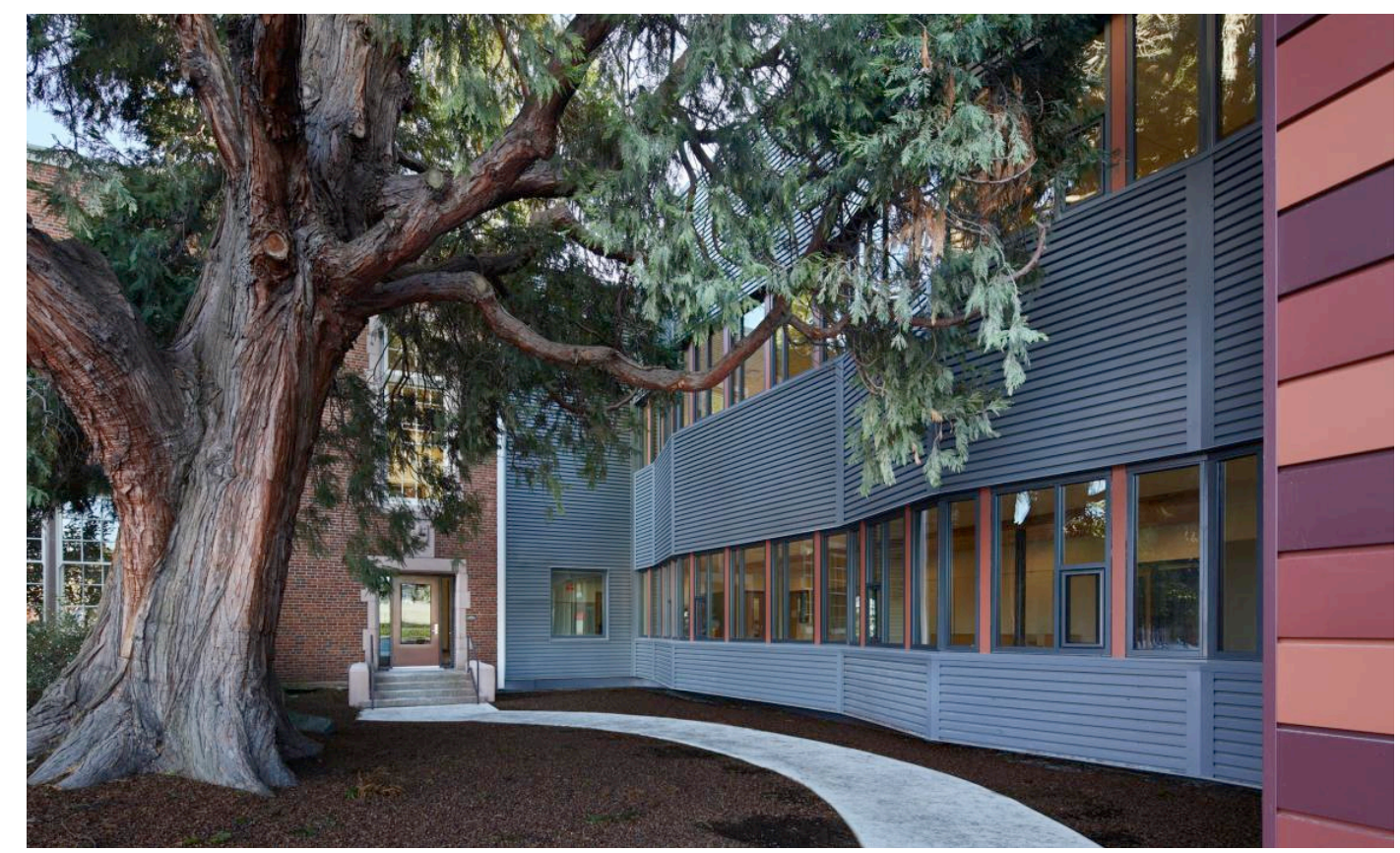
Educational Consultant: SOJ/Broadview Associates
Structural Engineer: KPFF Consulting Engineers
Mechanical Engineer: Metrix Engineers
Electrical Engineer: Hargis Engineers
Civil Engineer: LPD Engineering
Landscape Architects: Murase Associates
Geotech: Associated Earth Sciences
Food Service Design: Halliday Associates
Hazard Consultant: PBS Engineering + Environmental
Arborist: TreeSolutions
Acoustical Consultant: A3 Acoustics
Envelope Consultant: RDH Building Science
Commissioning Agent: Keithly Barber Associates
Project Management: SOJ | Shiels Obletz Johnsen
General Contractor: Lydig Construction
Major Material Suppliers: SeaTac Lighting, Dimensional Communications, ATS Automation, Robison Mechanical, Valley Electric



Vision
Inspire connections through equity and ensure continuity.

Goal
The central goal behind the modernization and addition was to honor the school's historic character and renew its spaces to be flexible, collaborative, and equitable for students and staff across grade levels.

Community Engagement
The planning process began with a series of seven workshops with the School Design Advisory Team to develop the values and vision for the project with input from community members, teachers, administrators, parents and students.



Learning Environment
It was a priority that the renewed school have a baseline of similar resources for all students so that educators could be intentional about shaping the learning environment. The community of educators was challenged by the experiential divide between existing portable classrooms and the permanent classrooms. The renovation introduced alcoves to organize the actively used hallways, and new views from classrooms to the hallways allows teachers to better supervise the shared learning areas.

Results and Achievements
The building interior is reorganized to accommodate new programs and teaching technology and to improve school safety and supervision. The additions provide 8 new classrooms in a 'learning community' model and a new gym. The existing gym is reconfigured for a new library.



The additions are designed to preserve historic exceptional trees. New shared, flexible learning spaces are provided in both the addition and existing building.
The project preserves the character of this neighborhood resource, eliminates portables to bring all classrooms together in one building, and makes student focused improvements to enhance the learning environment with a focus on equity between the existing building and new construction.

