

# Association 4 Learning Environments a4le

Friday, October 20, 2023



# Territorial Acknowledgement

We acknowledge the traditional territories of the Coast Salish: T'Sou-ke Nation and Sc'ianew Nation and Nuuchahnulth: Pacheedaht Nation. We also recognize some of our schools reside on the traditional territory of the Esquimalt and Songhees Nation.



“As Chief, my responsibility is not to the next election, it is to the future of my community for the next 100 years”

Chief Gordon Planes, T'Sou-ke First Nation

# First Things First

It's all about student outcomes  
and learning.





“You can’t expect children to learn 21<sup>st</sup> century skills in schools built for the 1950s. We need schools designed for 21<sup>st</sup> century success”

## The Learning Environment

Critical to student  
success

Changing demographics  
and needs of students

Can be a help or a  
hindrance



## What are we designing for?



Student need:  
Intellectual  
Physical  
Social-emotional  
Belonging  
Representation

## What else does design support?

*Nearly 1 in 6 Canadians have some form of disability*

Flexibility

Connection

Sensory needs

Healthy learning environment

Environmental sustainability

Access – bikes, buses, cars, pedestrians.

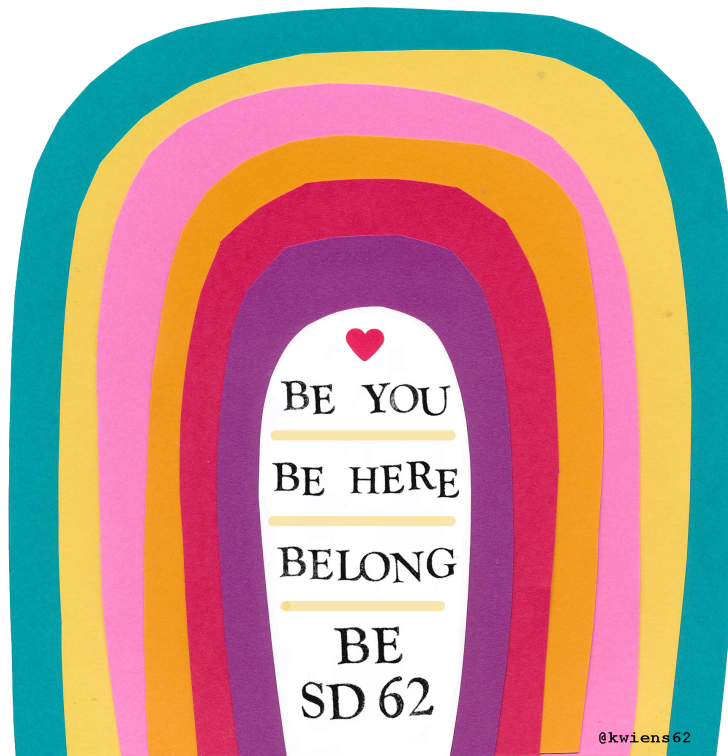




## Everyone has an opinion



Ministry of Education  
and Child Care  
School District  
School Administration  
Teachers and support  
staff  
Parents  
Students

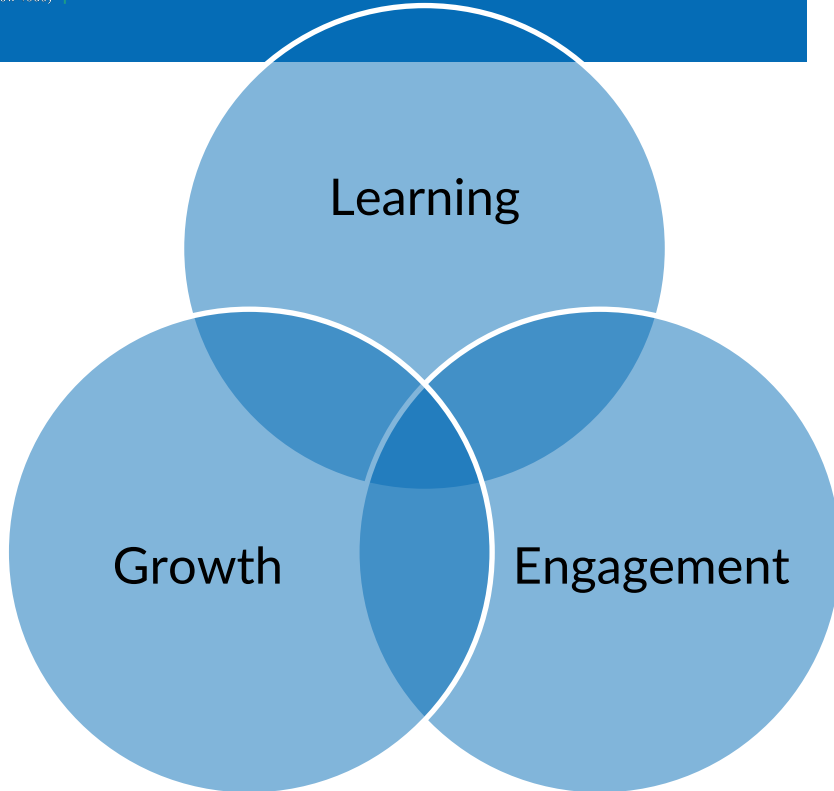


# Strategic Planning



“We are preparing students for jobs that don’t yet exist, using technologies that haven’t been invented, in order to solve problems that we don’t even know are problems yet.”

# It's all about learning





Strategic Plans  
Operational Plan  
LRFP – including  
portables  
Capital Plan  
Temporary Space Plan





## SD62 Strategic Plan - Growth

Goal: Pursue organizational  
excellence to support a vibrant  
school district

## SD62 Strategic Plan - Growth

Practices and standards to support a diverse population.

Physical assets, space and resources to support student success.

Operate within an ethical framework to ensure decisions and actions have a positive impact on society and the environment.



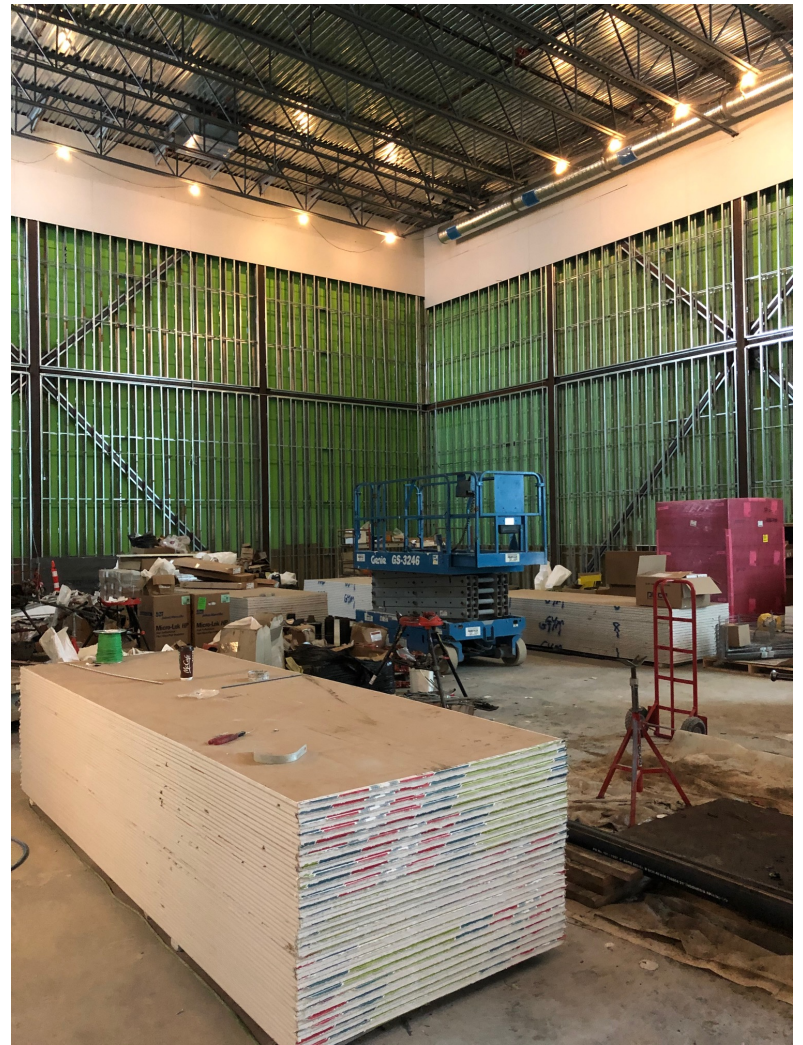


Understanding the  
demographics and areas of  
growth

New spaces

Expansions

Short-term needs, ie portables





## Five Year Capital Plan

### Project alignment

Envelope and expansion

### Bundling projects

Economy of scale

### Complexity

It's all in the numbers  
ensuring strong and  
reliable enrolment  
forecasts.



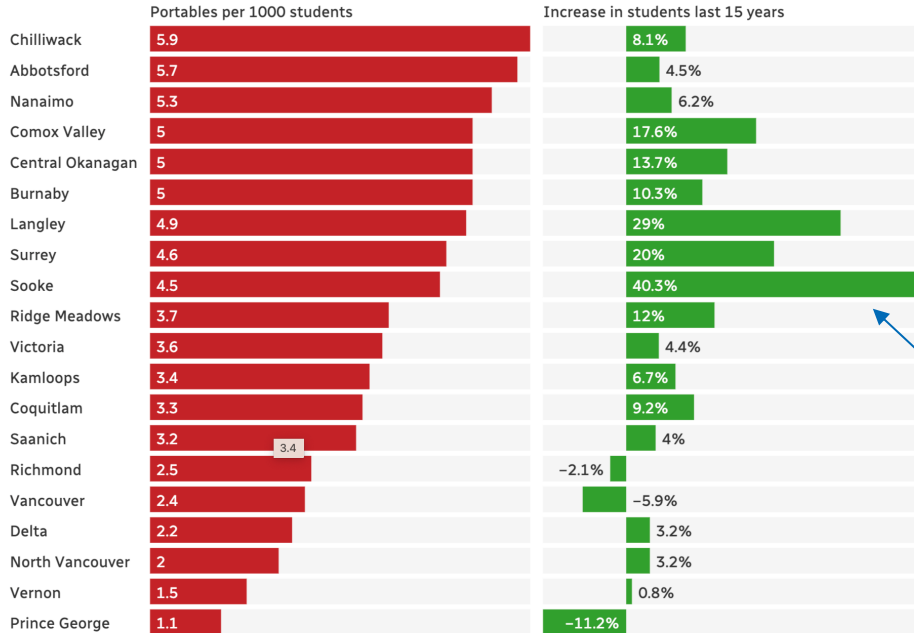
# SD 62 Demographics



**Fastest growing school district per capita  
in the province**

# The SD62 Context

## Portables and population growth in B.C.'s largest school districts



Numbers are based off of 2022/2023 data.

SD62

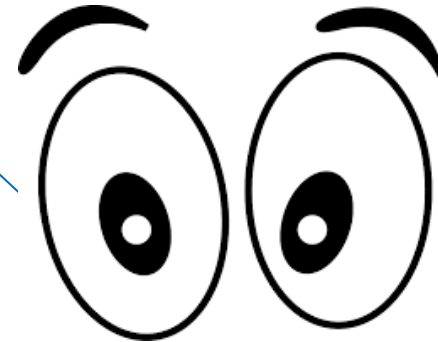
5% growth annually

112% capacity

City of Langford

31.8% in 5 yrs

Fastest growing in BC



# Understanding the Numbers

## In-house enrolment projections Confirm Baragar and Ministry projections

SchoolName	Ministry Capacity	Operational Capacity	2021	Original Projection 2022	Revised Projection 2022	% change	2023	2024	2025	2026	2027	2028	2029	2030	2031	2032
Colwood Elementary	215	199	202	237	229	(3)	243	248	253	260	266	272	276	280	284	286
Crystal View Elementary	310	287	272	151	185	23	190	191	194	197	199	201	202	204	205	206
David Cameron Elementary	325	356	406	365	372	2	385	394	404	413	422	429	435	441	446	450
Ecole Poirier Elementary	410	373	404	363	400	10	404	407	411	415	416	418	420	422	423	424
Hans Helgesen Elementary	215	199	206	228	216	(5)	219	224	228	233	237	240	243	246	247	248
Happy Valley Elementary	380	352	447	424	426	1	435	440	445	451	456	460	464	468	471	473
John Muir Elementary	215	196	227	217	227	5	234	238	242	244	247	250	252	254	255	256
John Stubbs Elementary	555	555	514	524	530	1	534	539	544	547	552	555	558	561	562	564
Lakewood Elementary	380	352	459	505	468	(7)	472	474	475	480	483	485	487	489	490	491
Millstream Elementary	215	199	305	347	319	(8)	330	346	355	369	379	388	397	405	409	413
Port Renfrew Elementary	75	75	14	25	18	(28)	19	21	21	21	23	24	25	26	26	27
Ruth King Elementary	315	291	369	305	314	3	339	356	375	395	412	428	442	456	467	475
Sangster Elementary	220	203	248	274	248	(9)	249	249	251	254	254	255	256	257	257	257
Sasenon Elementary	195	177	199	207	219	6	240	258	276	293	310	326	340	354	360	368
Savory Elementary	190	176	234	249	242	(3)	251	263	271	279	286	293	300	305	308	311
Sooke Elementary	290	264	280	334	281	(16)	277	270	264	261	259	256	253	251	250	249
Willway Elementary	270	249	227	199	210	6	223	233	245	257	267	276	285	293	299	304
Wishart Elementary	390	360	458	486	487	0	522	561	584	606	633	658	680	698	707	719
Pexislen Elementary School	500	500	273	273	290	6	301	311	319	327	334	341	347	353	357	360
<b>Total Elementary</b>		<b>5,288</b>	<b>5,471</b>	<b>5,712</b>	<b>5,681</b>	(1)	<b>5,867</b>	<b>6,023</b>	<b>6,157</b>	<b>6,302</b>	<b>6,435</b>	<b>6,555</b>	<b>6,662</b>	<b>6,763</b>	<b>6,823</b>	<b>6,881</b>
Dunsmuir Middle School	600	600	926	637	677	6	709	736	763	788	809	830	849	866	879	889
John Stubbs Middle School	300	300	310	375	338	(10)	362	382	398	415	434	450	464	477	483	491
Journey Middle School	575	575	574	535	571	7	580	593	605	619	624	632	641	648	651	654
Spencer Middle School	650	650	878	669	611	(9)	635	658	678	697	713	729	743	756	766	774
Centre Mountain Lellum Middle School	700	700	565	565	572	1	599	622	644	665	683	701	717	732	743	752
<b>Total Middle</b>		<b>2,825</b>	<b>2,688</b>	<b>2,781</b>	<b>2,769</b>	(0)	<b>2,885</b>	<b>2,991</b>	<b>3,088</b>	<b>3,184</b>	<b>3,263</b>	<b>3,342</b>	<b>3,414</b>	<b>3,479</b>	<b>3,522</b>	<b>3,560</b>
Belmont Secondary	1,200	1,200	1,368	1,467	1,379	(6)	1,427	1,449	1,476	1,506	1,531	1,554	1,572	1,590	1,605	1,615
Edward Milne Community School	650	650	621	555	614	11	617	626	634	642	643	648	653	657	658	660
Royal Bay Secondary	1,400	1,400	1,302	1,107	1,354	22	1,452	1,529	1,615	1,701	1,776	1,845	1,909	1,971	2,003	2,024
<b>Total Secondary</b>	<b>3,250</b>	<b>3,250</b>	<b>3,291</b>	<b>3,128</b>	<b>3,347</b>	7	<b>3,496</b>	<b>3,604</b>	<b>3,725</b>	<b>3,849</b>	<b>3,950</b>	<b>4,047</b>	<b>4,134</b>	<b>4,218</b>	<b>4,266</b>	<b>4,299</b>
<b>Total District</b>		<b>11,363</b>	<b>11,444</b>	<b>11,622</b>	<b>11,797</b>	2	<b>12,248</b>	<b>12,618</b>	<b>12,970</b>	<b>13,335</b>	<b>13,648</b>	<b>13,944</b>	<b>14,210</b>	<b>14,460</b>	<b>14,611</b>	<b>14,740</b>
Actuals																
Projections																
<b>Operational Capacity %</b>			<b>112.60%</b>	<b>102.28%</b>	<b>103.82%</b>		<b>107.79%</b>	<b>111.04%</b>	<b>114.14%</b>	<b>117.35%</b>	<b>120.11%</b>	<b>122.71%</b>	<b>125.06%</b>	<b>127.26%</b>	<b>128.58%</b>	<b>129.72%</b>

# Building Capacity and Connections





Build internal capacity

Shared sense of  
urgency

Relationships and  
connections







## Capital Steering Committee

District Principal

Director of Facilities

Manager – Minor Capital

Manager – Major Capital

Manager – Capital Planning

Superintendent

Secretary-Treasurer

## “Space Invaders”

Short-term space needs

Importance of space inventory  
and enrolment forecasts



## Outside Resources – Consult Early and Often

### Community Partners

Work with community agencies to bring additional capital and community need, eg. Village Initiative.

### MoECC

Project readiness

Risk manage PDRs

Property purchase agreements

### Indigenous Rights Holders

Na'tsa'math – one mind, one spirit

Listen to understand

Reconciliation – names, design, shared projects.

### Municipalities

MoU to enhance community facilities

Facilitate inspections –even on the weekend





# Project Management



“The average child’s height and build are very different than that of child in the 1960’s, which is the last time children were actually measured for determining measures of furniture.”

### Site Meetings

Owner reps along with consultants

District Principal

Manager – Major Capital

### Owner Meetings

Regularly scheduled throughout the project

Build relationship – when you have to negotiate a contract issue you need to know who you are talking to.

Owners

Superintendent and  
Secretary-Treasurer

General Contractor

CEO, COO



### Consultants

Advisors on change orders and construction documents

Understand scope of costs

### Legal Counsel

Contract interpretation

Early advice can save in the end.



# PEXSISEN and Centre Moutain Lellum

An extraordinary story of challenge

### PEXSISEN

Lekwungen - "The opening of hands"

Hands open,  
Welcoming each other to this  
beautiful place and time  
Gifted by Songhees First Nation





Centre Mountain Lellum  
SENCOTEN – “house” and  
“the idea of community, where  
we raise our children.”

Centre Mountain – which  
sits behind the school was the  
subject of land negotiations  
between the federal, provincial  
and local governments with  
the Sci’aneew First Nation

Gifted by the Sci’aneew  
(Beecher Bay) First  
Nation.



# Roadmap

Land purchase  
April 2018

1

Clearing and Grubbing  
March-May 2019  
To avoid nesting season

3

Supported Project  
Architects come on  
board  
March 2019

2

Civil Work  
Separate Contract  
Sept. 2019

4

Pandemic Begins  
March 2020

5

Construction Tender  
Award  
June 2020

6

PEXSISEN Opens -  
Sept. 2022  
Centre Mountain Lellum Opens -  
November 2022

7



BUILDING  
SCHOOLS  
FOR OUR  
GROWING  
COMMUNITY

**FUTURE HOME OF SD62'S NEWEST  
ELEMENTARY  
AND MIDDLE  
SCHOOL**

**Sooke School District 62**

sd62.bc.ca





















# Future Projects



### Seismic Projects

Port Renfrew Elementary

Sooke Elementary

### Major Capital

Sci'aneu Stelikel  
Elementary

Ruth King Modular  
Expansion

David Cameron Modular  
Expansion

### Next Projects

North Langford Elementary

North Langford Secondary

South Colwood Elementary



**Thank you**