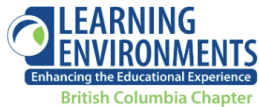
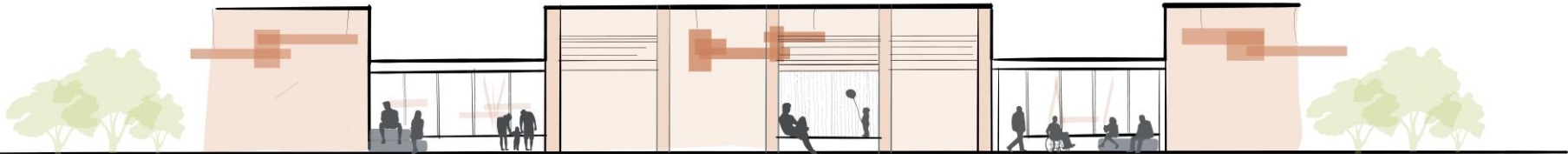


Integrating Policy and Priorities to Improve Accessibility Within Early and Adult Learning Environments

October 24, 2024



2024 Fall Chapter Conference

October 23-25, 2024

Ideas Take Flight
Kelowna, BC



Purpose

Education systems and institutions have the ability to break down barriers, promote equity, and ensure that all learners, regardless of age or ability, have the opportunity to thrive both academically and socially



Early Learning

FRANCL
ARCHITECTURE



Spaces of Support



Meet the speakers

Amy Johnston

Architect AIBC, LEED AP

Senior Project Architect

City of Kelowna, Parks & Buildings Planning

Dr. Delacey Tedesco

Associate Director, Equity, Diversity and Inclusion

Okanagan College, People Services

Rob St. Onge

Manager, Buildings and Sustainability Services

Okanagan College

Campus Planning & Facilities Management

Moderator:

Margarita Krivolutskaya

Architect AIBC, MRAIC, RHFAC Professional

Associate, Francl Architecture

Amy Johnston

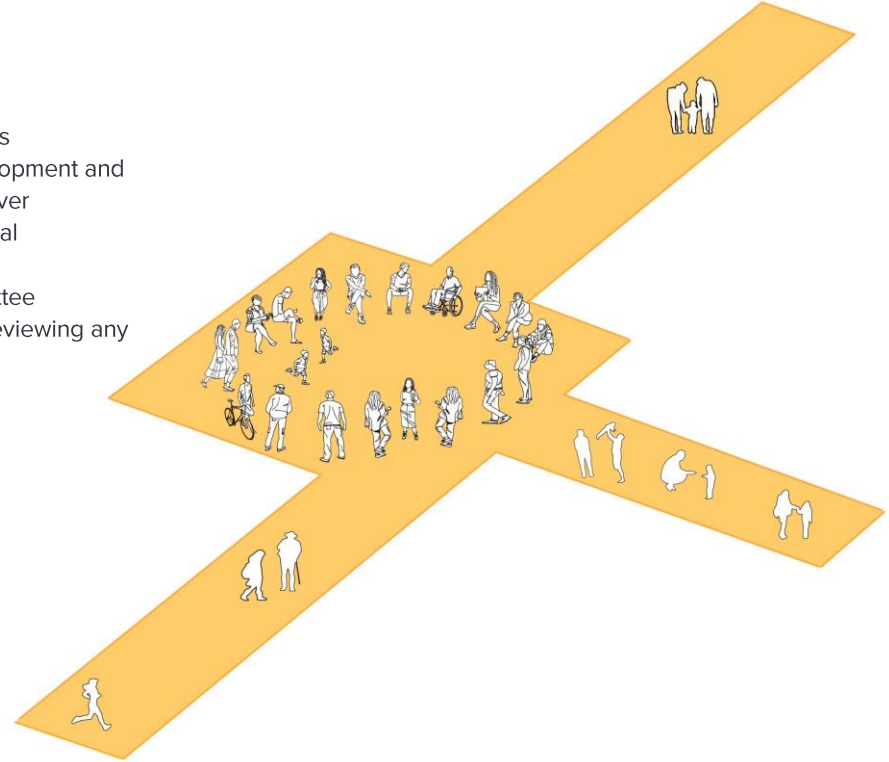
Senior Project Architect
Facilities Planning and Design

Responsibilities

- Project lead for capital projects
- Strategic planning for City-owned facilities
- Provides technical oversight for projects from inception to completion
- Policy and technical/ design guideline creator
- Public and Indigenous engagement

Previous Roles

- Project lead for capital projects
- Was responsible for the development and updates of the City of Vancouver Childcare Design and Technical Guidelines
- Liaised with the PDAC committee representing the CoV when reviewing any capital project designs



Accessibility Advisory Committee

Description

The Accessibility Advisory Committee is an advisory committee of Council that will make recommendations on how the City can identify, remove and prevent barriers to the full and equal participation of people with disabilities. Members are serving up to a four-year term, in alignment with the current Council term.

Responsibilities

- Advise the City in the development of and updates to its Accessibility Plan;
- Advise Council as it establishes priorities, develops policies and plans, and implements programs related to accessibility;
- Assist the City with identifying barriers related to civic infrastructure including municipal services and online resources;
- Advise the City on a process for receiving comments from the public on the City's accessibility plan and barriers to individuals in or interacting with the organization.



Laura Mackenrot, Co-Chair of the Persons with Disabilities Advisory Committee testing and demonstrating accessibility features during facility site visits at the City of Vancouver

Building a Stronger Kelowna Portfolio

Role

City's architect leading the design of a portfolio of community health and wellness facilities across the City of Kelowna

Key Responsibilities relating to accessibility

Set project vision and conditions of satisfaction

Make recommendations to Council as to what accessibility standards to achieve

Provide oversight during the design and delivery process ensuring that accessibility standards are achieved

Engage with accessibility committee



Transformative Inclusion at Okanagan College

EDISJ Steering Committee

- Accessibility Committee
- Sexual Violence Prevention Committee
- Working Groups:
 - EDISJ Strategy
 - Anti-Racism
 - 2sLGBTQQIA+
 - Policies and Procedures
 - Recruitment and Learning



INCLUSION IS FOR ALL OF US

At OC, the principles of EDISJ guide our work towards

TRANSFORMATIVE INCLUSION

We want to make Okanagan College a place where everyone feels included, and we are excited to see how the journey to full inclusion transforms OC. Whether as students, employees, alumni, or community partners, we want and need everyone to participate and contribute along the way. The journey together *is* the transformation.

**EQUITY
DIVERSITY
INCLUSION
— AND —
SOCIAL
JUSTICE**



Learn more and get involved: okanagan.bc.ca/edisj
Comments or questions? Email: edisj@okanagan.bc.ca

Accessibility for Adult Learners

Accessibility Plan 2023-26

Consultation Process

- Input from nearly 1400 students, employees, local educators and Indigenous partners
- Research and project work of the Accessibility Committee



Key Commitment Areas

- Facilities
- Delivery of Services
- Education
- Employment
- Health
- Information and Communication
- Policy
- Procurement
- Transportation

Message from the President

In our mission to transform lives and communities we must first recognize that individuals' lived experiences related to the accessibility of higher education is as unique as the individuals themselves. It is essential, therefore, that we recognize and address systemic barriers that may be impeding learners from achieving their learning goals or preventing college employees from participating in our community true to themselves. The College's accessibility plan sets out goals and objectives that will involve all members of the College community in making accessibility a reality shared by everyone.

Accessible Environments for Adult Learners

Accessibility Audit

- Intensive review of all 4 campuses plus Revelstoke and Oliver Centres
- Detailed lists of upgrades to existing facilities
- Organized thematically:
 - Life and Safety
 - Privacy and Dignity
 - Improved Experience

Okanagan College Accessibility Plan 2023-2026		
Standard	Date	Deliverable
Built Environment	2023	Submit proposal to Integrated Resource Planning to fund Accessibility Audit in 2024
	2023	Continue work with EDISJ Ambassador group to establish OC Standard for washroom facilities to meet EDISJ and Accessibility principles. Establish budget, timeline and priority for upgrades.
	2023	Establish process and practice for weekly checks of automatic door openers and prioritization for repair
	2024	Conduct an Accessibility Audit at the 4 Okanagan College campuses and develop plan for facilities future updates
	2025	Ensure the new Food and Tourism building is built to the highest accessibility standards
	2025	Implement first year of Facilities Accessibility Plan based on Audit

Okanagan College

Area: 99,000 m² (> 1 M ft²)

Buildings : 41

Locations: 9

Students > 7000

Staff > 1000



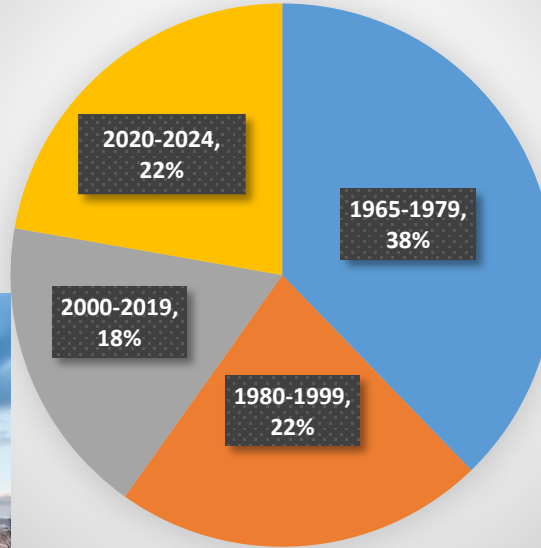
Progress

Food, Wine and Tourism:

- RHFAC Gold
- WELL Equity Rating



Building Portfolio by Age



Accessibility Report

Takeaways:

- Signage & Lighting
- Automatic Door Openers (ADO's)
- Washroom Upgrades

ADO's:

- Current: 101 Units
- Ave capital cost: \$2,500
- Lifespan 10-15 yrs



Balancing Budgets and Planning for the Future with Accessibility Standards

How can institutions navigate the challenges of budgeting for accessible learning spaces, maximizing funds while balancing rising construction costs and evolving standards, without compromising other essential needs?

What strategies can future-proof these spaces, address hidden vs. transparent costs, and clarify decision-makers' roles in the budgeting and design process?

Integrating Lived Experiences of the community in Planning and Operation:

How can institutions incorporate the lived experiences of individuals with diverse abilities, such as sensory sensitivities and mobility limitations, into the planning and operation of accessible learning environments?

What is the value of an accessibility committee in this process, and how can institutions foster trust, ensure transparency, and address representation gaps through an iterative approach?

Aligning Facilities and Operations with EDI (Equity, Diversity, Inclusion) Priorities:

How critical is the role of experienced support staff in achieving accessibility goals, particularly for individuals with complex disabilities, and what strategies can ensure human resources align with accessibility priorities?

How can aligning facilities with EDI (Equity, Diversity, Inclusion) policies benefit institutions, and can you provide examples of successful integrations, such as scheduling systems that have proven effective?

Q+A

Thank You

